



## Features

- Radial Leaded Devices
- Cured, flame retardant epoxy polymer insulating material meets UL 94V-0 requirements
- RoHS compliant\*
- Agency recognition:

## Applications

- Almost anywhere there is a low voltage power supply and a load to be protected, including:
- Computers & peripherals
  - General electronics
  - Automotive applications

# MF-R Series - PTC Resettable Fuses

### Electrical Characteristics

| Model        | V max. Volts | I max. Amps | Ihold            | Itrip | Initial Resistance |       | 1 Hour (R <sub>1</sub> ) Post-Trip Resistance | Max. Time to Trip |                  | Tripped Power Dissipation |
|--------------|--------------|-------------|------------------|-------|--------------------|-------|---|-------------------|------------------|---------------------------|
|              |              |             | Amperes at 23 °C |       | Ohms at 23 °C      |       | Ohms at 23 °C                                 | Amperes at 23 °C  | Seconds at 23 °C | Watts at 23 °C            |
|              |              |             | Hold             | Trip  | Min.               | Max.  | Max.  |                   |                  | Typ.                      |
| MF-R005**    | 60           | 40          | 0.05             | 0.10  | 7.3                | 11.1  | 22.0  | 0.5               | 5.0              | 0.22                      |
| MF-R010      | 60           | 40          | 0.10             | 0.20  | 2.50               | 4.50  | 7.50  | 0.5               | 4.0              | 0.38                      |
| MF-R017      | 60           | 40          | 0.17             | 0.34  | 2.00               | 3.20  | 8.00  | 0.85              | 3.0              | 0.48                      |
| MF-R020      | 60           | 40          | 0.20             | 0.40  | 1.50               | 2.84  | 4.40  | 1.0               | 2.2              | 0.40                      |
| MF-R025      | 60           | 40          | 0.25             | 0.50  | 1.00               | 1.95  | 3.00  | 1.25              | 2.5              | 0.45                      |
| MF-R030      | 60           | 40          | 0.30             | 0.60  | 0.76               | 1.36  | 2.10  | 1.5               | 3.0              | 0.50                      |
| MF-R040      | 60           | 40          | 0.40             | 0.80  | 0.52               | 0.86  | 1.29  | 2.0               | 3.8              | 0.55                      |
| MF-R050      | 60           | 40          | 0.50             | 1.00  | 0.41               | 0.77  | 1.17  | 2.5               | 4.0              | 0.75                      |
| MF-R065      | 60           | 40          | 0.65             | 1.30  | 0.27               | 0.48  | 0.72  | 3.25              | 5.3              | 0.90                      |
| MF-R075      | 60           | 40          | 0.75             | 1.50  | 0.18               | 0.40  | 0.60  | 3.75              | 6.3              | 0.90                      |
| MF-R090      | 60           | 40          | 0.90             | 1.80  | 0.14               | 0.31  | 0.47  | 4.5               | 7.2              | 1.00                      |
| MF-R090-0-9  | 30           | 40          | 0.90             | 1.80  | 0.07               | 0.12  | 0.22  | 4.5               | 5.9              | 0.60                      |
| MF-R110      | 30           | 40          | 1.10             | 2.20  | 0.10               | 0.18  | 0.27  | 5.5               | 6.6              | 0.70                      |
| MF-R135      | 30           | 40          | 1.35             | 2.70  | 0.065              | 0.115 | 0.17  | 6.75              | 7.3              | 0.80                      |
| MF-R160      | 30           | 40          | 1.60             | 3.20  | 0.055              | 0.105 | 0.15  | 8.0               | 8.0              | 0.90                      |
| MF-R185      | 30           | 40          | 1.85             | 3.70  | 0.040              | 0.07  | 0.11  | 9.25              | 8.7              | 1.00                      |
| MF-R250      | 30           | 40          | 2.50             | 5.00  | 0.025              | 0.048 | 0.07  | 12.5              | 10.3             | 1.20                      |
| MF-R250-0-10 | 30           | 40          | 2.50             | 5.00  | 0.025              | 0.048 | 0.07  | 12.5              | 10.3             | 1.20                      |
| MF-R300      | 30           | 40          | 3.00             | 6.00  | 0.020              | 0.05  | 0.08  | 15.0              | 10.8             | 2.00                      |
| MF-R400      | 30           | 40          | 4.00             | 8.00  | 0.010              | 0.03  | 0.05  | 20.0              | 12.7             | 2.50                      |
| MF-R500      | 30           | 40          | 5.00             | 10.00 | 0.010              | 0.03  | 0.05  | 25.0              | 14.5             | 3.00                      |
| MF-R600      | 30           | 40          | 6.00             | 12.00 | 0.005              | 0.02  | 0.04  | 30.0              | 16.0             | 3.50                      |
| MF-R700      | 30           | 40          | 7.00             | 14.00 | 0.005              | 0.02  | 0.03  | 35.0              | 17.5             | 3.80                      |
| MF-R800      | 30           | 40          | 8.00             | 16.00 | 0.005              | 0.02  | 0.03  | 40.0              | 18.8             | 4.00                      |
| MF-R900      | 30           | 40          | 9.00             | 18.00 | 0.005              | 0.01  | 0.02  | 45.0              | ***20.0          | 4.20                      |
| MF-R1100     | 16           | 100         | 11.00            | 22.00 | 0.003              | 0.01  | 0.014   | 40.0              | 20.0             | 4.50                      |

\*\*CSA approval pending.

\*\*\*Tested at 40 amps

### Environmental Characteristics

|   |  |
|---|--|
| Operating/Storage Temperature.....                          | -40 °C to +85 °C   |
| Maximum Device Surface Temperature<br>in Tripped State..... | 125 °C   |
| Passive Aging.....  | +85 °C, 1000 hours..... ±5 % typical resistance change           |
| Humidity Aging.....   | +85 °C, 85 % R.H. 1000 hours..... ±5 % typical resistance change |
| Thermal Shock.....  | -40 °C to +85 °C, 10 times..... ±10 % typical resistance change  |
| Solvent Resistance.....                                     | MIL-STD-202, Method 215..... No change                           |
| Vibration.....  | MIL-STD-883C, Method 2007.1,..... No change<br>Condition A       |

### Test Procedures And Requirements For Model MF-R Series

| Test                 | Test Conditions                      | Accept/Reject Criteria                  |
|----------------------|--------------------------------------|---|
| Visual/Mech.....     | Verify dimensions and materials..... | Per MF physical description             |
| Resistance.....      | In still air @ 23 °C.....            | R <sub>min</sub> ≤ R ≤ R <sub>max</sub> |
| Time to Trip.....    | 5 times Ihold, Vmax, 23 °C.....      | T ≤ max. time to trip (seconds)         |
| Hold Current.....    | 30 min. at Ihold.....                | No trip                                 |
| Trip Cycle Life..... | Vmax, Imax, 100 cycles.....          | No arcing or burning                    |
| Trip Endurance.....  | Vmax, 48 hours.....                  | No arcing or burning                    |

UL File Number ..... E 174545  
 CSA File Number ..... CA 110338  
 TÜV File Number ..... R2057213

\*RoHS Directive 2002/95/EC Jan 27, 2003 including Annex.

Specifications are subject to change without notice.

Customers should verify actual device performance in their specific applications.

## Additional Features

- Bulk packaging, tape and reel and Ammo-Pak available on most models

## MF-R Series - PTC Resettable Fuses

**BOURNS®**

Product Dimensions (see next page for outline drawing)

| Model        | A<br>Max.              | B<br>Max.              | C                      |                       | D<br>Min.             | E<br>Max.             | Physical Characteristics |                         |          |
|--------------|------------------------|------------------------|------------------------|-----------------------|-----------------------|-----------------------|--------------------------|-------------------------|----------|
|              |                        |                        | Nom.                   | Tol. ±                |                       |                       | Style                    | Lead Dia.               | Material |
| MF-R005      | $\frac{8.0}{(0.315)}$  | $\frac{8.3}{(0.327)}$  | $\frac{5.1}{(0.201)}$  | $\frac{0.7}{(0.028)}$ | $\frac{7.6}{(0.299)}$ | $\frac{3.1}{(0.122)}$ | 4                        | $\frac{0.405}{(0.016)}$ | Sn/NiCu  |
| MF-R010      | $\frac{7.4}{(0.291)}$  | $\frac{12.7}{(0.5)}$   | $\frac{5.1}{(0.201)}$  | $\frac{0.7}{(0.028)}$ | $\frac{7.6}{(0.299)}$ | $\frac{3.1}{(0.122)}$ | 1                        | $\frac{0.51}{(0.020)}$  | Sn/NiCu  |
| MF-R017      | $\frac{7.4}{(0.291)}$  | $\frac{12.7}{(0.5)}$   | $\frac{5.1}{(0.201)}$  | $\frac{0.7}{(0.028)}$ | $\frac{7.6}{(0.299)}$ | $\frac{3.1}{(0.122)}$ | 1                        | $\frac{0.51}{(0.020)}$  | Sn/CuFe  |
| MF-R020      | $\frac{7.4}{(0.291)}$  | $\frac{12.7}{(0.5)}$   | $\frac{5.1}{(0.201)}$  | $\frac{0.7}{(0.028)}$ | $\frac{7.6}{(0.299)}$ | $\frac{3.1}{(0.122)}$ | 1                        | $\frac{0.51}{(0.020)}$  | Sn/CuFe  |
| MF-R025      | $\frac{7.4}{(0.291)}$  | $\frac{12.7}{(0.5)}$   | $\frac{5.1}{(0.201)}$  | $\frac{0.7}{(0.028)}$ | $\frac{7.6}{(0.299)}$ | $\frac{3.1}{(0.122)}$ | 1                        | $\frac{0.51}{(0.020)}$  | Sn/CuFe  |
| MF-R030      | $\frac{7.4}{(0.291)}$  | $\frac{13.4}{(0.528)}$ | $\frac{5.1}{(0.201)}$  | $\frac{0.7}{(0.028)}$ | $\frac{7.6}{(0.299)}$ | $\frac{3.1}{(0.122)}$ | 1                        | $\frac{0.51}{(0.020)}$  | Sn/CuFe  |
| MF-R040      | $\frac{7.4}{(0.291)}$  | $\frac{13.7}{(0.539)}$ | $\frac{5.1}{(0.201)}$  | $\frac{0.7}{(0.028)}$ | $\frac{7.6}{(0.299)}$ | $\frac{3.1}{(0.122)}$ | 1                        | $\frac{0.51}{(0.020)}$  | Sn/CuFe  |
| MF-R050      | $\frac{7.9}{(0.311)}$  | $\frac{13.7}{(0.539)}$ | $\frac{5.1}{(0.201)}$  | $\frac{0.7}{(0.028)}$ | $\frac{7.6}{(0.299)}$ | $\frac{3.1}{(0.122)}$ | 1                        | $\frac{0.51}{(0.020)}$  | Sn/Cu    |
| MF-R065      | $\frac{9.7}{(0.382)}$  | $\frac{15.2}{(0.598)}$ | $\frac{5.1}{(0.201)}$  | $\frac{0.7}{(0.028)}$ | $\frac{7.6}{(0.299)}$ | $\frac{3.1}{(0.122)}$ | 1                        | $\frac{0.51}{(0.020)}$  | Sn/Cu    |
| MF-R075      | $\frac{10.4}{(0.409)}$ | $\frac{16.0}{(0.630)}$ | $\frac{5.1}{(0.201)}$  | $\frac{0.7}{(0.028)}$ | $\frac{7.6}{(0.299)}$ | $\frac{3.1}{(0.122)}$ | 1                        | $\frac{0.51}{(0.020)}$  | Sn/Cu    |
| MF-R090      | $\frac{11.7}{(0.461)}$ | $\frac{16.7}{(0.657)}$ | $\frac{5.1}{(0.201)}$  | $\frac{0.7}{(0.028)}$ | $\frac{7.6}{(0.299)}$ | $\frac{3.1}{(0.122)}$ | 1                        | $\frac{0.51}{(0.020)}$  | Sn/Cu    |
| MF-R090-0-9  | $\frac{7.4}{(0.291)}$  | $\frac{12.2}{(0.480)}$ | $\frac{5.1}{(0.201)}$  | $\frac{0.7}{(0.028)}$ | $\frac{7.6}{(0.299)}$ | $\frac{3.0}{(0.118)}$ | 3                        | $\frac{0.51}{(0.020)}$  | Sn/CuFe  |
| MF-R110      | $\frac{8.9}{(0.350)}$  | $\frac{14.0}{(0.551)}$ | $\frac{5.1}{(0.201)}$  | $\frac{0.7}{(0.028)}$ | $\frac{7.6}{(0.299)}$ | $\frac{3.0}{(0.118)}$ | 1                        | $\frac{0.51}{(0.020)}$  | Sn/Cu    |
| MF-R135      | $\frac{8.9}{(0.350)}$  | $\frac{18.9}{(0.744)}$ | $\frac{5.1}{(0.201)}$  | $\frac{0.7}{(0.028)}$ | $\frac{7.6}{(0.299)}$ | $\frac{3.0}{(0.118)}$ | 1                        | $\frac{0.51}{(0.020)}$  | Sn/Cu    |
| MF-R160      | $\frac{10.2}{(0.402)}$ | $\frac{16.8}{(0.661)}$ | $\frac{5.1}{(0.201)}$  | $\frac{0.7}{(0.028)}$ | $\frac{7.6}{(0.299)}$ | $\frac{3.0}{(0.118)}$ | 1                        | $\frac{0.51}{(0.020)}$  | Sn/Cu    |
| MF-R185      | $\frac{12.0}{(0.472)}$ | $\frac{18.4}{(0.724)}$ | $\frac{5.1}{(0.201)}$  | $\frac{0.7}{(0.028)}$ | $\frac{7.6}{(0.299)}$ | $\frac{3.0}{(0.118)}$ | 1                        | $\frac{0.51}{(0.020)}$  | Sn/Cu    |
| MF-R250      | $\frac{12.0}{(0.472)}$ | $\frac{18.3}{(0.720)}$ | $\frac{5.1}{(0.201)}$  | $\frac{0.7}{(0.028)}$ | $\frac{7.6}{(0.299)}$ | $\frac{3.0}{(0.118)}$ | 2                        | $\frac{0.81}{(0.032)}$  | Sn/Cu    |
| MF-R250-0-10 | $\frac{12.0}{(0.472)}$ | $\frac{18.3}{(0.720)}$ | $\frac{5.1}{(0.201)}$  | $\frac{0.7}{(0.028)}$ | $\frac{7.6}{(0.299)}$ | $\frac{3.0}{(0.118)}$ | 3                        | $\frac{0.51}{(0.020)}$  | Sn/CuFe  |
| MF-R300      | $\frac{12.0}{(0.472)}$ | $\frac{18.3}{(0.720)}$ | $\frac{5.1}{(0.201)}$  | $\frac{0.7}{(0.028)}$ | $\frac{7.6}{(0.299)}$ | $\frac{3.0}{(0.118)}$ | 2                        | $\frac{0.81}{(0.032)}$  | Sn/Cu    |
| MF-R400      | $\frac{14.4}{(0.567)}$ | $\frac{24.8}{(0.976)}$ | $\frac{5.1}{(0.201)}$  | $\frac{0.7}{(0.028)}$ | $\frac{7.6}{(0.299)}$ | $\frac{3.0}{(0.118)}$ | 2                        | $\frac{0.81}{(0.032)}$  | Sn/Cu    |
| MF-R500      | $\frac{17.4}{(0.685)}$ | $\frac{24.9}{(0.980)}$ | $\frac{10.2}{(0.402)}$ | $\frac{0.7}{(0.028)}$ | $\frac{7.6}{(0.299)}$ | $\frac{3.0}{(0.118)}$ | 2                        | $\frac{0.81}{(0.032)}$  | Sn/Cu    |
| MF-R600      | $\frac{19.3}{(0.760)}$ | $\frac{31.9}{(1.256)}$ | $\frac{10.2}{(0.402)}$ | $\frac{0.7}{(0.028)}$ | $\frac{7.6}{(0.299)}$ | $\frac{3.0}{(0.118)}$ | 2                        | $\frac{0.81}{(0.032)}$  | Sn/Cu    |
| MF-R700      | $\frac{22.1}{(0.870)}$ | $\frac{29.8}{(1.173)}$ | $\frac{10.2}{(0.402)}$ | $\frac{0.7}{(0.028)}$ | $\frac{7.6}{(0.299)}$ | $\frac{3.0}{(0.118)}$ | 2                        | $\frac{0.81}{(0.032)}$  | Sn/Cu    |
| MF-R800      | $\frac{24.2}{(0.953)}$ | $\frac{32.9}{(1.295)}$ | $\frac{10.2}{(0.402)}$ | $\frac{0.7}{(0.028)}$ | $\frac{7.6}{(0.299)}$ | $\frac{3.0}{(0.118)}$ | 2                        | $\frac{0.81}{(0.032)}$  | Sn/Cu    |
| MF-R900      | $\frac{24.2}{(0.953)}$ | $\frac{32.9}{(1.295)}$ | $\frac{10.2}{(0.402)}$ | $\frac{0.7}{(0.028)}$ | $\frac{7.6}{(0.299)}$ | $\frac{3.0}{(0.118)}$ | 2                        | $\frac{0.81}{(0.032)}$  | Sn/Cu    |
| MF-R1100     | $\frac{24.2}{(0.953)}$ | $\frac{32.9}{(1.295)}$ | $\frac{10.2}{(0.402)}$ | $\frac{0.7}{(0.028)}$ | $\frac{7.6}{(0.299)}$ | $\frac{3.0}{(0.118)}$ | 2                        | $\frac{0.81}{(0.032)}$  | Sn/Cu    |

Packaging options: BULK: All models = 500 pcs. per bag.  
 TAPE & REEL: MF-R005-MF-R160 - 12.7 mm device pitch = 3000 pcs. per reel;  
 MF-R185-MF-R400 - 25.4mm device pitch = 1500 pcs. per reel; MF-R250-0-10 = 1500 pcs. per reel.  
 AMMO-PACK: MF-R005-MF-R160 - 12.7 mm device pitch = 2000 pcs. per reel;  
 MF-R185-MF-R400 - 25.4 mm device pitch = 1000 pcs. per reel; MF-R090-0-9 & MF-R250-0-10 =  
 2000 pcs. per reel.

0.405 (26AWG)  
 0.51 (24AWG)  
 0.81 (20AWG)  
 DIMENSIONS:  $\frac{\text{MM}}{\text{(INCHES)}}$

Specifications are subject to change without notice.  
 Customers should verify actual device performance in their specific applications.

# MF-R Series - PTC Resettable Fuses

**BOURNS®**

## Product Dimensions (see previous page for dimensions)

Style 1



Style 2



Style 3



Style 4



NOTE: Kinked lead option is available for board standoff. Contact factory for details.

NOTE: Also available with straight leads. Contact factory for details.

## Thermal Derating Chart - $I_{hold}$ / $I_{trip}$ (Amps)

| Model        | Ambient Operating Temperature |             |             |             |             |             |             |             |             |
|--------------|-------------------------------|-------------|-------------|-------------|-------------|-------------|-------------|-------------|-------------|
|              | -40 °C                        | -20 °C      | 0 °C        | 23 °C       | 40 °C       | 50 °C       | 60 °C       | 70 °C       | 85 °C       |
| MF-R005      | 0.08 / 0.16                   | 0.07 / 0.14 | 0.06 / 0.12 | 0.05 / 0.10 | 0.04 / 0.08 | 0.04 / 0.08 | 0.03 / 0.07 | 0.03 / 0.07 | 0.02 / 0.05 |
| MF-R010      | 0.16 / 0.32                   | 0.14 / 0.28 | 0.12 / 0.24 | 0.10 / 0.20 | 0.08 / 0.16 | 0.07 / 0.14 | 0.06 / 0.12 | 0.05 / 0.10 | 0.04 / 0.08 |
| MF-R017      | 0.26 / 0.52                   | 0.23 / 0.46 | 0.20 / 0.40 | 0.17 / 0.34 | 0.14 / 0.28 | 0.12 / 0.24 | 0.11 / 0.22 | 0.09 / 0.18 | 0.07 / 0.14 |
| MF-R020      | 0.31 / 0.62                   | 0.27 / 0.54 | 0.24 / 0.48 | 0.20 / 0.40 | 0.16 / 0.32 | 0.14 / 0.28 | 0.13 / 0.26 | 0.11 / 0.22 | 0.08 / 0.16 |
| MF-R025      | 0.39 / 0.78                   | 0.34 / 0.68 | 0.30 / 0.60 | 0.25 / 0.50 | 0.20 / 0.40 | 0.18 / 0.36 | 0.16 / 0.32 | 0.14 / 0.28 | 0.10 / 0.20 |
| MF-R030      | 0.47 / 0.94                   | 0.41 / 0.82 | 0.36 / 0.72 | 0.30 / 0.60 | 0.24 / 0.48 | 0.22 / 0.44 | 0.19 / 0.38 | 0.16 / 0.32 | 0.12 / 0.24 |
| MF-R040      | 0.62 / 1.24                   | 0.54 / 1.08 | 0.48 / 0.96 | 0.40 / 0.80 | 0.32 / 0.64 | 0.29 / 0.58 | 0.25 / 0.50 | 0.22 / 0.44 | 0.16 / 0.32 |
| MF-R050      | 0.78 / 1.56                   | 0.68 / 1.36 | 0.60 / 1.20 | 0.50 / 1.00 | 0.41 / 0.82 | 0.36 / 0.72 | 0.32 / 0.64 | 0.27 / 0.54 | 0.20 / 0.40 |
| MF-R065      | 1.01 / 2.02                   | 0.88 / 1.76 | 0.77 / 1.54 | 0.65 / 1.30 | 0.53 / 1.06 | 0.47 / 0.94 | 0.41 / 0.82 | 0.35 / 0.70 | 0.26 / 0.52 |
| MF-R075      | 1.16 / 2.32                   | 1.02 / 2.04 | 0.89 / 1.78 | 0.75 / 1.50 | 0.61 / 1.22 | 0.54 / 1.08 | 0.47 / 0.94 | 0.41 / 0.82 | 0.30 / 0.60 |
| MF-R090      | 1.40 / 2.80                   | 1.22 / 2.44 | 1.07 / 2.14 | 0.90 / 1.80 | 0.73 / 1.46 | 0.65 / 1.30 | 0.57 / 1.14 | 0.49 / 0.98 | 0.36 / 0.72 |
| MF-R090-0-9  | 1.40 / 2.80                   | 1.22 / 2.44 | 1.07 / 2.14 | 0.90 / 1.80 | 0.73 / 1.46 | 0.65 / 1.30 | 0.57 / 1.14 | 0.49 / 0.98 | 0.36 / 0.72 |
| MF-R110      | 1.60 / 3.20                   | 1.43 / 2.86 | 1.27 / 2.54 | 1.10 / 2.20 | 0.91 / 1.82 | 0.85 / 1.70 | 0.75 / 1.50 | 0.67 / 1.34 | 0.57 / 1.14 |
| MF-R135      | 1.96 / 3.92                   | 1.76 / 3.52 | 1.55 / 3.10 | 1.35 / 2.70 | 1.12 / 2.24 | 1.04 / 2.08 | 0.92 / 1.84 | 0.82 / 1.64 | 0.70 / 1.40 |
| MF-R160      | 2.32 / 4.64                   | 2.08 / 4.16 | 1.84 / 3.68 | 1.60 / 3.20 | 1.33 / 2.66 | 1.23 / 2.46 | 1.09 / 2.18 | 0.98 / 1.96 | 0.83 / 1.66 |
| MF-R185      | 2.68 / 5.36                   | 2.41 / 4.82 | 2.13 / 4.26 | 1.85 / 3.70 | 1.54 / 3.08 | 1.42 / 2.84 | 1.26 / 2.52 | 1.13 / 2.26 | 0.96 / 1.92 |
| MF-R250      | 3.63 / 7.26                   | 3.25 / 6.50 | 2.88 / 5.76 | 2.50 / 5.00 | 2.08 / 4.16 | 1.93 / 3.86 | 1.70 / 3.40 | 1.53 / 3.06 | 1.30 / 2.60 |
| MF-R250-0-10 | 3.63 / 7.26                   | 3.25 / 6.50 | 2.88 / 5.76 | 2.50 / 5.00 | 2.08 / 4.16 | 1.93 / 3.86 | 1.70 / 3.40 | 1.53 / 3.06 | 1.30 / 2.60 |
| MF-R300      | 4.35 / 8.70                   | 3.90 / 7.80 | 3.45 / 6.90 | 3.00 / 6.00 | 2.49 / 4.98 | 2.31 / 4.62 | 2.04 / 4.08 | 1.83 / 3.66 | 1.56 / 3.12 |
| MF-R400      | 5.80 / 11.6                   | 5.20 / 10.4 | 4.60 / 9.20 | 4.00 / 8.00 | 3.32 / 6.64 | 3.08 / 6.16 | 2.72 / 5.44 | 2.44 / 4.88 | 2.08 / 4.16 |
| MF-R500      | 7.25 / 14.5                   | 6.50 / 13.0 | 5.75 / 11.5 | 5.00 / 10.0 | 4.15 / 8.30 | 3.85 / 7.70 | 3.40 / 6.80 | 3.05 / 6.10 | 2.60 / 5.20 |
| MF-R600      | 8.70 / 17.4                   | 7.80 / 15.6 | 6.90 / 13.8 | 6.00 / 12.0 | 4.98 / 9.96 | 4.62 / 9.24 | 4.08 / 8.16 | 3.66 / 7.32 | 3.12 / 6.24 |
| MF-R700      | 10.1 / 20.3                   | 9.10 / 18.2 | 8.05 / 16.1 | 7.00 / 14.0 | 5.81 / 11.6 | 5.39 / 10.7 | 4.76 / 9.52 | 4.27 / 9.44 | 3.64 / 7.28 |
| MF-R800      | 11.6 / 23.2                   | 10.4 / 20.8 | 9.20 / 18.4 | 8.00 / 16.0 | 6.64 / 13.2 | 6.16 / 12.3 | 5.44 / 10.8 | 4.88 / 9.76 | 4.16 / 8.32 |
| MF-R900      | 13.0 / 26.1                   | 11.7 / 23.4 | 10.3 / 20.7 | 9.00 / 18.0 | 7.47 / 14.9 | 6.93 / 12.7 | 6.12 / 12.2 | 5.49 / 10.9 | 4.68 / 9.36 |
| MF-R1100     | 16.1 / 32.0                   | 14.6 / 29.2 | 13.1 / 26.2 | 11.0 / 22.1 | 9.40 / 18.4 | 8.80 / 17.6 | 7.80 / 15.6 | 6.90 / 13.8 | 5.20 / 10.4 |

Specifications are subject to change without notice. Customers should verify actual device performance in their specific applications.

# MF-R Series - PTC Resettable Fuses

**BOURNS®**

## Typical Time to Trip at 23 °C



## How to Order

**MF - R 110 - 0 - 99**

Multifuse®  
Product Designator

Series  
R = Radial Leaded Component

Hold Current, I<sub>hold</sub>  
005-1100 (0.05 Amps - 11.0 Amps)

Packaging Options  
 - \_\_\_ = Bulk Packaging without part number suffix option  
 - 0-99 = Bulk Packaging with part number suffix option  
 - 2 = Tape and Reel without part number suffix option\*  
 - 2-99 = Tape and Reel with part number suffix option  
 - AP = Ammo-Pak\*  
 - 0-14 = Kinked leads where straight leads are standard  
 - 0-17 = Straight leads where kinked leads are standard

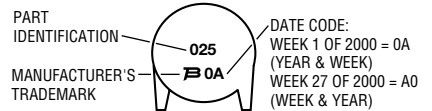
Part Number Suffix Option  
 - 99 = As of date code April 1, 2005 all MF-R models are RoHS compliant. The suffix "-99" can be used if a new part number is required to reference the RoHS compliance.

Examples:  
 MF-R110 ..... Bulk packaging  
 MF-R110-0-99 ..... Bulk packaging with part number suffix option  
 MF-R110-2 ..... Tape and reel packaging  
 MF-R110-2-99 ..... Tape and reel packaging with part number suffix option  
 MF-R090-0-9-99 ..... Bulk packaging with part number suffix option  
 MF-R250-0-10-99 ..... Bulk packaging with part number suffix option

\*Packaged per EIA486-B

### Typical Part Marking: MF-R005 - R025

Represents total content. Layout may vary.



### Typical Part Marking: MF-R030 - R1100

Represents total content. Layout may vary.



MF-R SERIES, REV. Y, 05/11

Specifications are subject to change without notice. Customers should verify actual device performance in their specific applications.

# MF-R, MF-R/90, MF-R/600, MF-RX, MF-RX/72 & MF-RX/250 Series Tape and Reel Specifications

**BOURNS®**

Devices taped using EIA468-B/IEC286-2 standards. See table below and Figures 1 and 2 for details.

| Dimension Description  | IEC Mark   | EIA Mark   | Dimensions             |                                    |
|--|------------|------------|------------------------|------------------------------------|
|  |            |            | Dimensions             | Tolerance                          |
| Carrier tape width   | $W$        | $W$        | $\frac{18}{(.709)}$    | $\frac{-0.5/+1.0}{(-0.02/+0.039)}$ |
| Hold down tape width   | $W_0$      | $W_4$      | $\frac{11}{(.433)}$    | min.                               |
| Hold down tape   |            |            | No protrusion          |                                    |
| Top distance between tape edges  | $W_2$      | $W_6$      | $\frac{3}{(.118)}$     | max.                               |
| Sprocket hole position   | $W_1$      | $W_5$      | $\frac{9}{(.354)}$     | $\frac{-0.5/+0.75}{(-0.02/+0.03)}$ |
| Sprocket hole diameter   | $D_0$      | $D_0$      | $\frac{4}{(.157)}$     | $\frac{\pm 0.2}{(\pm .0078)}$      |
| Abscissa to plane (straight lead)  | $H$        | $H$        | $\frac{18.5}{(.728)}$  | $\frac{\pm 3.0}{(\pm .118)}$       |
| Abscissa to plane (kinked lead)  | $H_0$      | $H_0$      | $\frac{16}{(.63)}$     | $\frac{\pm 0.5}{(\pm .02)}$        |
| Abscissa to top (straight lead)  | $H_1$      | $H_1$      | $\frac{38.0}{(1.496)}$ | max.                               |
| Abscissa to top (kinked lead)  | $H_1$      | $H_1$      | $\frac{32.2}{(1.268)}$ | max.                               |
| Overall width w/lead protrusion (straight lead)  |            | $C_1$      | $\frac{55.0}{(2.165)}$ | max.                               |
| Overall width w/lead protrusion (kinked lead)  |            | $C_1$      | $\frac{43.2}{(1.7)}$   | max.                               |
| Overall width w/o lead protrusion (straight lead)  |            | $C_2$      | $\frac{54.0}{(2.126)}$ | max.                               |
| Overall width w/o lead protrusion (kinked lead)  |            | $C_2$      | $\frac{42.5}{(1.673)}$ | max.                               |
| Lead protrusion  | $l_1$      | $L_1$      | $\frac{1.0}{(.039)}$   | max.                               |
| Protrusion of cutout   | $L$        | $L$        | $\frac{11}{(.433)}$    | max.                               |
| Protrusion beyond hold-down tape   | $l_2$      | $l_2$      | Not specified          |                                    |
| Sprocket hole pitch  | $P_0$      | $P_0$      | $\frac{12.7}{(0.5)}$   | $\frac{\pm 0.3}{(\pm .012)}$       |
| Pitch tolerance  |            |            | 20 consecutive         | $\frac{\pm 1}{(\pm .039)}$         |
| Device pitch: MF-R005–MF-R160, MF-R/90,<br>MF-RX110/72–MF-RX185/72                                   |            |            | $\frac{12.7}{(0.5)}$   | $\frac{\pm 0.3}{(\pm .012)}$       |
| Device pitch: MF-R185–MF-R400, MF-RX110–MF-RX375<br>MF-R/600, MF-RX250/72–MF-RX375/72                |            |            | $\frac{25.4}{(1.0)}$   | $\frac{\pm 0.6}{(\pm .024)}$       |
| Tape thickness   | $t$        | $t$        | $\frac{0.9}{(.035)}$   | max.                               |
| Tape thickness with splice: MF-R010–MF-R160,<br>MF-RX110/72–MF-RX185/72                              |            | $t_1$      | $\frac{1.5}{(.059)}$   | max.                               |
| Tape thickness with splice: MF-R250–MF-R1100,<br>MF-RX110–MF-RX375, MF-R/90, MF-RX250/72–MF-RX375/72 |            | $t_1$      | $\frac{2.3}{(.091)}$   | max.                               |
| Splice sprocket hole alignment   |            |            | 0                      | $\frac{\pm 0.3}{(\pm .012)}$       |
| Body lateral deviation   | $\Delta_h$ | $\Delta_h$ | 0                      | $\frac{\pm 1.0}{(\pm .039)}$       |
| Body tape plane deviation  | $\Delta_p$ | $\Delta_p$ | 0                      | $\frac{\pm 1.3}{(\pm .051)}$       |

Specifications are subject to change without notice.  
Customers should verify actual device performance in their specific applications.

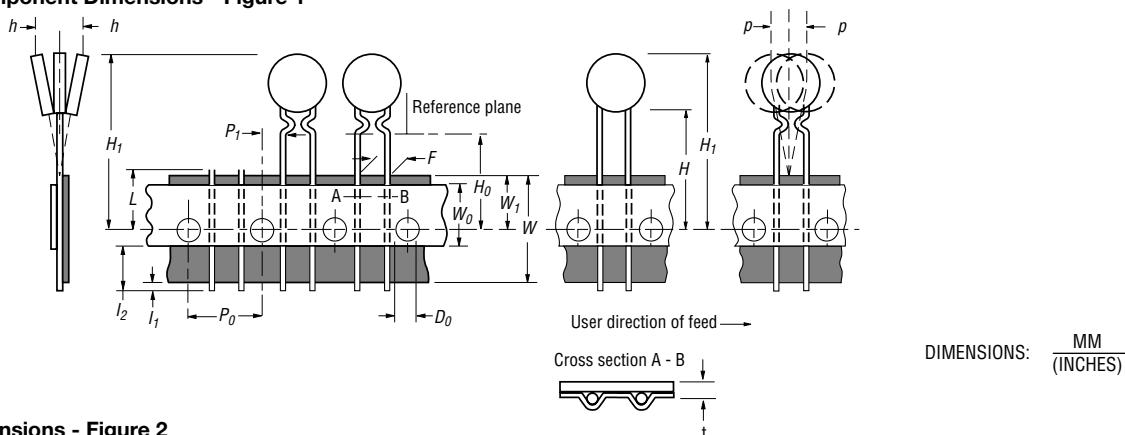
DIMENSIONS:  $\frac{\text{MM}}{\text{(INCHES)}}$

# MF-R, MF-R/90, MF-R/600, MF-RX, MF-RX/72 & MF-RX/250 Series Tape and Reel Specifications

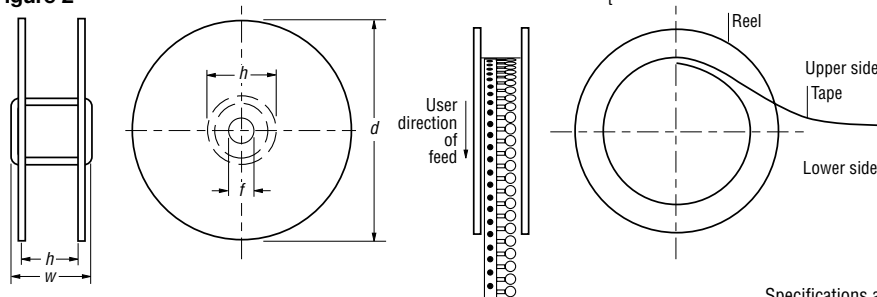
**BOURNS®**

| Dimension Description                                  | IEC Mark       | EIA Mark       | Dimensions       |                                    |                |      |
|--|----------------|----------------|------------------|------------------------------------|----------------|------|
|  |                |                | Dimensions       | Tolerance                          |                |      |
| Lead spacing: MF-R, MF-R/90, MF-R/600, MF-RX, MF-RX/72 | F              | F              | 5.08<br>(0.2)    | $\pm 0.2$<br>( $\pm 0.008$ )       |                |      |
| Lead spacing: MF-RX/250                                | F              | F              | 5.08<br>(0.2)    | $-0.5/+0.6$<br>( $-0.020/+0.024$ ) |                |      |
| Reel width   | w              | W <sub>2</sub> | 56.0<br>(2.205)  | max.                               |                |      |
| Reel diameter  | d              | a              | 370.0<br>(14.57) | max.                               |                |      |
| Space between flanges less device                      | W <sub>1</sub> | h              | 4.75<br>(.187)   | $\pm 3.25$<br>( $\pm .128$ )       |                |      |
| Arbor hole diameter                                    | f              | c              | 26.0<br>(1.024)  | $\pm 12.0$<br>( $\pm .472$ )       |                |      |
| Core diameter: MF-R, MF-RX, MF-R/90                    | h              | n              | 80<br>(3.15)     | max.                               |                |      |
| Core diameter: MF-RX/250, MF-R/600                     | h              | n              | 91<br>(3.58)     | max.                               |                |      |
| Box: MF-R, MF-RX, MF-R/90                              |                |                | 56<br>(2.2)      | 372<br>(14.6)                      | 372<br>(14.6)  | max. |
| Box: MF-RX/250   |                |                | 67<br>(2.64)     | 372<br>(14.6)                      | 362<br>(14.25) | max. |
| Box: MF-R/600  |                |                | 64<br>(2.52)     | 372<br>(14.6)                      | 362<br>(14.25) | max. |
| Consecutive missing places: MF-R, MF-RX, MF-R/90       |                |                |                  | 3                                  | max.           |      |
| Consecutive missing places: MF-RX/250, MF-R/600        |                |                |                  | none                               |                |      |
| Empty places per reel: MF-R, MF-RX, MF-R/90            |                |                |                  |                                    | Not specified  |      |
| Empty places per reel: MF-RX/250, MF-R/600             |                |                |                  |                                    | 0.1 %          |      |

**Taped Component Dimensions - Figure 1**



**Reel Dimensions - Figure 2**



Specifications are subject to change without notice.  
Customers should verify actual device performance in their specific applications.

Компания «Океан Электроники» предлагает заключение долгосрочных отношений при поставках импортных электронных компонентов на взаимовыгодных условиях!

Наши преимущества:

- Поставка оригинальных импортных электронных компонентов напрямую с производств Америки, Европы и Азии, а так же с крупнейших складов мира;
- Широкая линейка поставок активных и пассивных импортных электронных компонентов (более 30 млн. наименований);
- Поставка сложных, дефицитных, либо снятых с производства позиций;
- Оперативные сроки поставки под заказ (от 5 рабочих дней);
- Экспресс доставка в любую точку России;
- Помощь Конструкторского Отдела и консультации квалифицированных инженеров;
- Техническая поддержка проекта, помощь в подборе аналогов, поставка прототипов;
- Поставка электронных компонентов под контролем ВП;
- Система менеджмента качества сертифицирована по Международному стандарту ISO 9001;
- При необходимости вся продукция военного и аэрокосмического назначения проходит испытания и сертификацию в лаборатории (по согласованию с заказчиком);
- Поставка специализированных компонентов военного и аэрокосмического уровня качества (Xilinx, Altera, Analog Devices, Intersil, Interpoint, Microsemi, Actel, Aeroflex, Peregrine, VPT, Syfer, Eurofarad, Texas Instruments, MS Kennedy, Miteq, Cobham, E2V, MA-COM, Hittite, Mini-Circuits, General Dynamics и др.);

Компания «Океан Электроники» является официальным дистрибьютором и эксклюзивным представителем в России одного из крупнейших производителей разъемов военного и аэрокосмического назначения «JONHON», а так же официальным дистрибьютором и эксклюзивным представителем в России производителя высокотехнологичных и надежных решений для передачи СВЧ сигналов «FORSTAR».



## JONHON

«JONHON» (основан в 1970 г.)

Разъемы специального, военного и аэрокосмического назначения:

(Применяются в военной, авиационной, аэрокосмической, морской, железнодорожной, горно- и нефтедобывающей отраслях промышленности)

«FORSTAR» (основан в 1998 г.)

ВЧ соединители, коаксиальные кабели,  
кабельные сборки и микроволновые компоненты:

(Применяются в телекоммуникациях гражданского и специального назначения, в средствах связи, РЛС, а так же военной, авиационной и аэрокосмической отраслях промышленности).



Телефон: 8 (812) 309-75-97 (многоканальный)

Факс: 8 (812) 320-03-32

Электронная почта: [ocean@oceanchips.ru](mailto:ocean@oceanchips.ru)

Web: <http://oceanchips.ru/>

Адрес: 198099, г. Санкт-Петербург, ул. Калинина, д. 2, корп. 4, лит. А