

**FEATURES**
**Dual output frequency range**
 $f_{OUT} = 8.71 \text{ GHz to } 9.55 \text{ GHz}$ 
 $f_{OUT/2} = 4.355 \text{ GHz to } 4.775 \text{ GHz}$ 
**Output power ( $P_{OUT}$ ): 11 dBm**
**Single-sideband (SSB) phase noise:  $-115 \text{ dBc/Hz}$  at 100 kHz**
**No external resonator needed**
**RoHS-compliant, 5 mm  $\times$  5 mm, 32-lead LFCSP: 25 mm<sup>2</sup>**
**APPLICATIONS**
**Point to point and multipoint radios**
**Test equipment and industrial controls**
**Very small aperture terminals (VSATs)**
**GENERAL DESCRIPTION**

The **HMC1161** is a monolithic microwave integrated circuit (MMIC), voltage controlled oscillator (VCO) that integrates a resonator, a negative resistance device, and a varactor diode, and features a half frequency output.

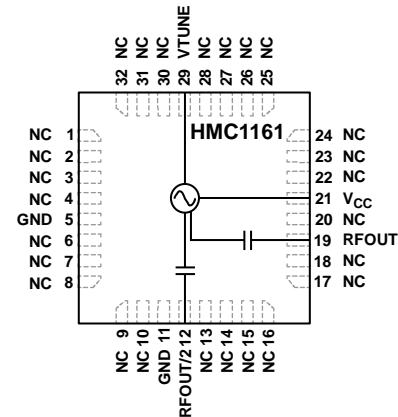
**FUNCTIONAL BLOCK DIAGRAM**


Figure 1.

13882-001

Because of the monolithic construction of the oscillator, the output power and phase noise performance are excellent over temperature.

The output power is 11 dBm typical from a 5 V supply voltage. The VCO is housed in a RoHS-compliant LFCSP and requires no external matching components.

**TABLE OF CONTENTS**

|  |   |   |    |
|--|---|---|----|
| Features .....                                   | 1 | Interface Schematics .....                  | 6  |
| Applications.....                                | 1 | Typical Performance Characteristics .....   | 7  |
| Functional Block Diagram .....                   | 1 | Applications Information .....              | 9  |
| General Description .....                        | 1 | Evaluation Printed Circuit Board (PCB)..... | 10 |
| Revision History .....                           | 2 | Bill of Materials.....                      | 10 |
| Specifications.....                              | 3 | Packaging and Ordering Information .....    | 11 |
| Absolute Maximum Ratings .....                   | 4 | Outline Dimensions.....                     | 11 |
| ESD Caution.....                                 | 4 | Ordering Guide .....                        | 11 |
| Pin Configuration and Function Descriptions..... | 5 |   |    |

**REVISION HISTORY**

**11/15—Rev. A to Rev. B**

|  |    |
|--|----|
| Changes to Figure 3 and Figure 4.....  | 6  |
| Changes to Ordering Guide, Note 1..... | 11 |

**8/15—Revision A: Initial Version**

This Hittite Microwave Products data sheet has been reformatted to meet the styles and standards of Analog Devices, Inc.

## SPECIFICATIONS

$T_A = -40^{\circ}\text{C}$  to  $+85^{\circ}\text{C}$ ,  $V_{CC} = 5\text{ V}$ , unless otherwise noted.

Table 1.

| Parameter                                  | Min   | Typ  | Max   | Unit                    | Test Conditions/Comments                                |
|--|-------|------|-------|-------------------------|---|
| <b>FREQUENCY</b>                           |       |      |       |                         |   |
| Range                                      |       |      |       |                         |   |
| Output Frequency ( $f_{OUT}$ )             | 8.71  |      | 9.55  | GHz                     |   |
| Half Output Frequency ( $f_{OUT}/2$ )      | 4.355 |      | 4.755 | GHz                     |   |
| Drift Rate                                 |       | 0.75 |       | MHz/ $^{\circ}\text{C}$ |   |
| Pulling                                    |       | 3.5  |       | MHz p-p                 | Pulling into a 2.0:1 voltage standing wave ratio (VSWR) |
| Pushing                                    |       | 2    |       | MHz/V                   | At VTUNE = 5 V  |
| <b>OUTPUT POWER (<math>P_{OUT}</math>)</b> |       |      |       |                         |   |
| RFOUT                                      | 8     | 11   | 16    | dBm                     |   |
| RFOUT/2                                    | 0     | 4    | 8     | dBm                     |   |
| Supply Current ( $I_{CC}$ )                |       | 230  |       | mA                      | $V_{CC} = 4.75\text{ V}$                                |
|  | 200   | 250  | 300   | mA                      | $V_{CC} = 5.00\text{ V}$                                |
|  |       | 270  |       | mA                      | $V_{CC} = 5.25\text{ V}$                                |
| <b>HARMONICS, SUBHARMONICS</b>             |       |      |       |                         |   |
| 1/2  |       | 23   |       | dBc                     |   |
| 3/2  |       | 40   |       | dBc                     |   |
| Second                                     |       | 20   |       | dBc                     |   |
| Third                                      |       | 30   |       | dBc                     |   |
| <b>TUNING</b>                              |       |      |       |                         |   |
| Voltage (VTUNE)                            | 2     |      | 13    | V                       |   |
| Sensitivity                                | 50    |      | 250   | MHz/V                   |   |
| Tune Port Leakage Current                  |       |      | 10    | $\mu\text{A}$           | VTUNE = 13 V  |
| <b>OUTPUT RETURN LOSS</b>                  |       |      |       |                         |   |
|  |       | 2.5  |       | dB                      |   |
| <b>SSB PHASE NOISE</b>                     |       |      |       |                         |   |
| 10 kHz Offset                              |       | -90  | -83   | dBc/Hz                  |   |
| 100 kHz Offset                             |       | -115 | -109  | dBc/Hz                  |   |

**ABSOLUTE MAXIMUM RATINGS**

Table 2.

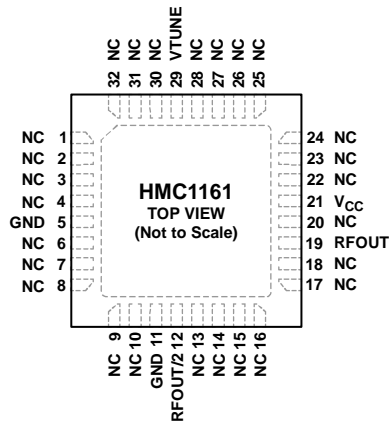
| Parameter  | Rating          |
|--|-----------------|
| V <sub>CC</sub>  | 5.5 V dc        |
| VTUNE  | 0 V to 15 V     |
| Temperature  |                 |
| Operating  | –40°C to +85°C  |
| Storage  | –65°C to +150°C |
| Nominal Junction (to Maintain<br>1 Million Hours Mean Time to<br>Failure (MTTF)) | 135°C           |
| Nominal Junction (T <sub>A</sub> = 85°C)   | 126.7°C         |
| Maximum Reflow Temperature<br>(MSL3 Rating)                                      | 260°C           |
| Thermal Resistance (Junction to<br>Ground Paddle)                                | 31.4°C/W        |
| ESD Sensitivity (Human Body Model)   | Class 1A        |

Stresses at or above those listed under Absolute Maximum Ratings may cause permanent damage to the product. This is a stress rating only; functional operation of the product at these or any other conditions above those indicated in the operational section of this specification is not implied. Operation beyond the maximum operating conditions for extended periods may affect product reliability.

**ESD CAUTION****ESD (electrostatic discharge) sensitive device.**

Charged devices and circuit boards can discharge without detection. Although this product features patented or proprietary protection circuitry, damage may occur on devices subjected to high energy ESD. Therefore, proper ESD precautions should be taken to avoid performance degradation or loss of functionality.

# PIN CONFIGURATION AND FUNCTION DESCRIPTIONS



- NOTES**
1. NC = NO CONNECT. HOWEVER, THESE PINS CAN BE CONNECTED TO RF/DC GROUND WITHOUT AFFECTING THE PERFORMANCE OF THE DEVICE.
  2. EXPOSED PAD. THE PACKAGE BOTTOM HAS AN EXPOSED METAL PAD THAT MUST BE CONNECTED TO RF/DC GROUND.

13382-002

Figure 2. Pin Configuration

Table 3. Pin Function Descriptions

| Pin No.   | Mnemonic        | Description   |
|---|-----------------|---|
| 1 to 4, 6 to 10, 13 to 18, 20, 22 to 28, 30 to 32 | NC              | No Connect. However, these pins can be connected to RF/dc ground without affecting the performance of the device. |
| 5, 11   | GND             | Ground. These pins must be connected to RF/dc ground.   |
| 12  | RFOUT/2         | Half Frequency Output. This pin is ac-coupled.  |
| 19  | RFOUT           | RF Output. This pin is ac-coupled.  |
| 21  | V <sub>CC</sub> | Supply Voltage (5 V).   |
| 29  | VTUNE           | Control Voltage and Modulation Input. The modulation bandwidth is dependent on the drive source impedance.        |
|   | EP              | Exposed Pad. The package bottom has an exposed metal pad that must be connected to RF/dc ground.                  |

INTERFACE SCHEMATICS

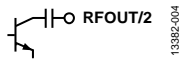


Figure 3. RFOUT/2 Interface

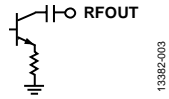


Figure 4. RFOUT Interface

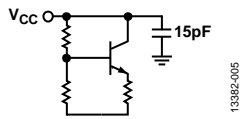


Figure 5. Vcc Interface

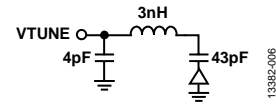


Figure 6. VTUNE Interface



Figure 7. GND Interface

# TYPICAL PERFORMANCE CHARACTERISTICS

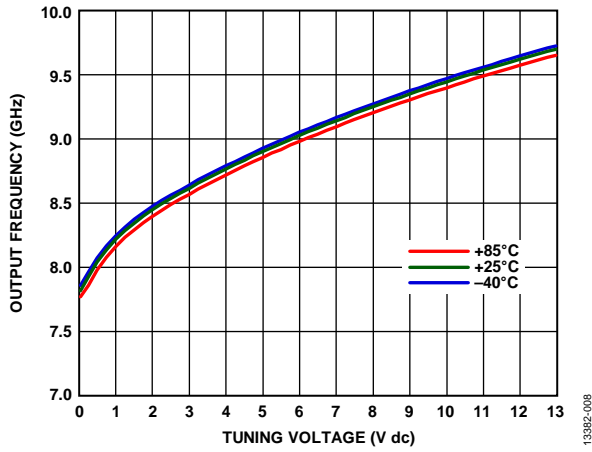


Figure 8. Output Frequency vs. Tuning Voltage

13382-008

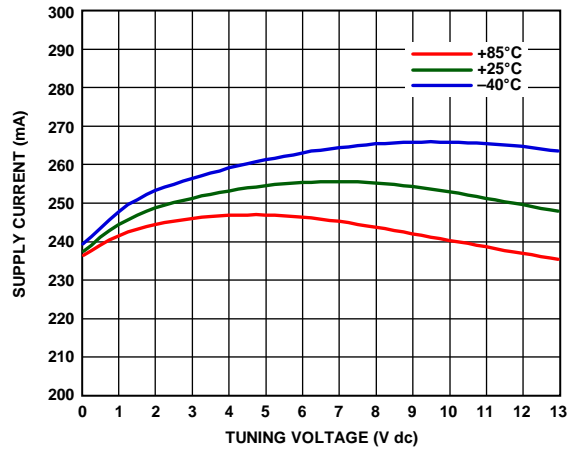


Figure 11. Supply Current ( $I_{cc}$ ) vs. Tuning Voltage

13382-011

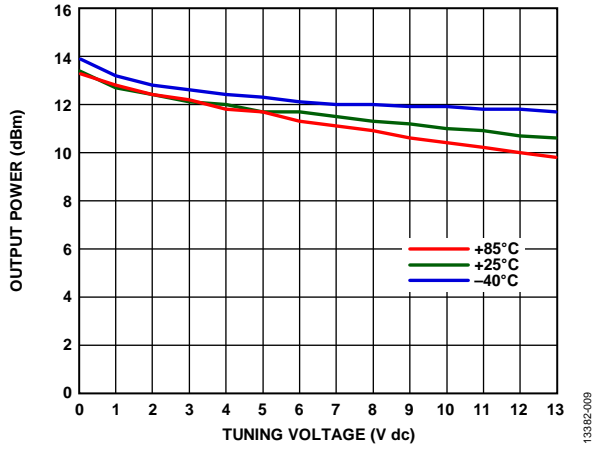


Figure 9. Output Power vs. Tuning Voltage

13382-009

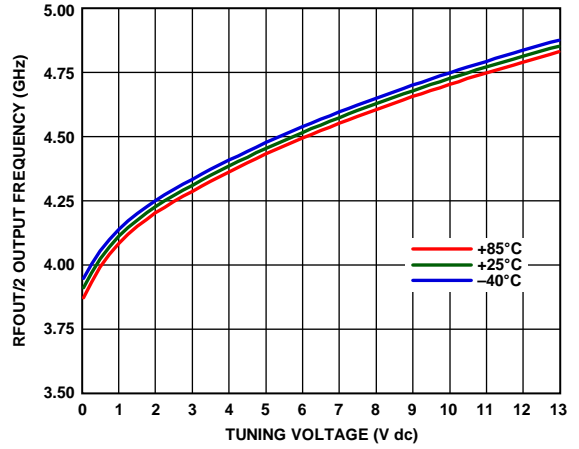


Figure 12. RFOUT/2 Output Frequency vs. Tuning Voltage

13382-012

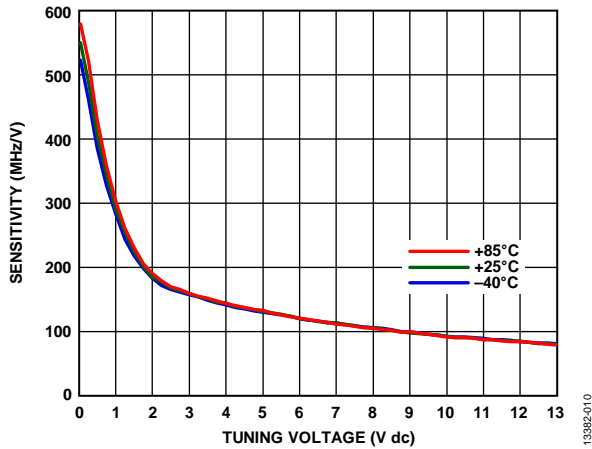


Figure 10. Sensitivity vs. Tuning Voltage

13382-010

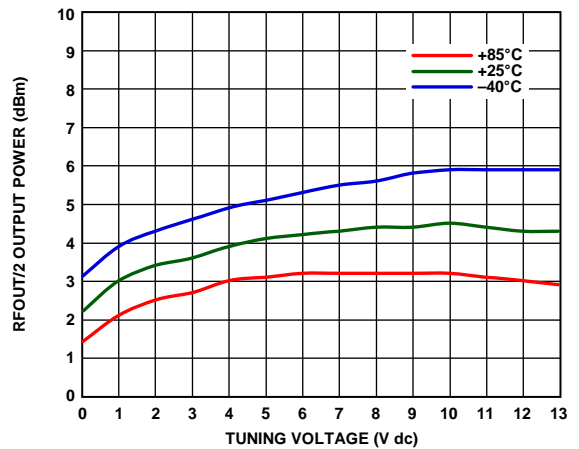


Figure 13. RFOUT/2 Output Power vs. Tuning Voltage

13382-013

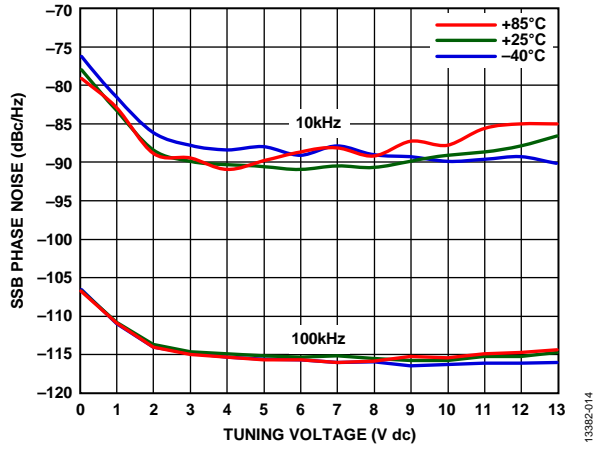


Figure 14. SSB Phase Noise vs. Tuning Voltage

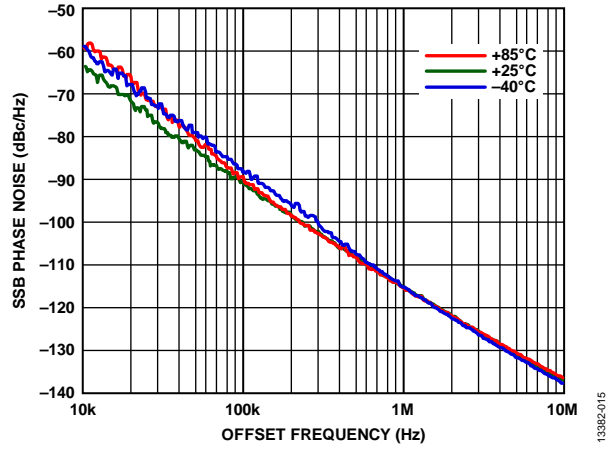


Figure 15. SSB Phase Noise vs. Offset Frequency at VTUNE = 5 V



## APPLICATIONS INFORMATION

The HMC1161 serves as the local oscillator (LO) in microwave synthesizer applications. The primary applications are point-to-point microwave radios, military, radars, test and measurement, as well as industrial and medical equipment. The low phase noise allows higher orders of modulation and offers improved bit error rates in communication systems, whereas the linear,

monotonic tuning sensitivity allows a stable loop filter design. The higher output power minimizes the gain required to drive subsequent stages. The half frequency output reduces the input frequency to the prescaler without the addition of residual phase noise to the input of the phase-locked loop synthesizer.

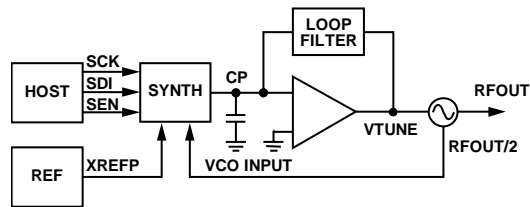


Figure 16. Typical Application Diagram

## EVALUATION PRINTED CIRCUIT BOARD (PCB)

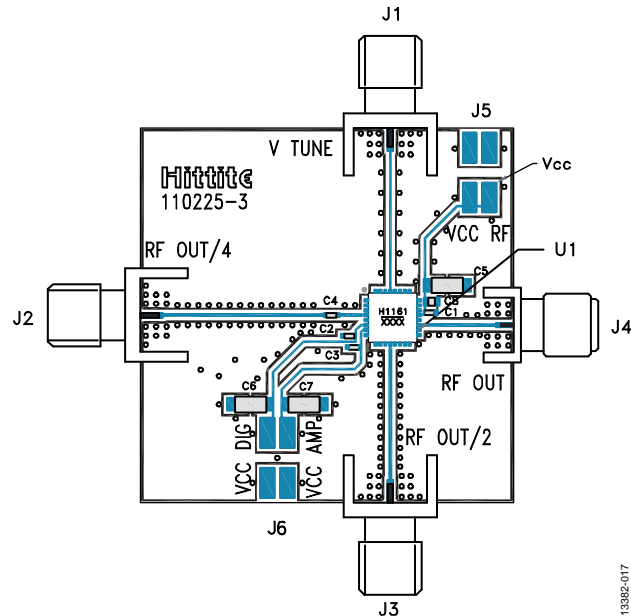


Figure 17. Evaluation PCB

The circuit board used in an application uses RF circuit design techniques. Ensure that the signal lines have  $50\ \Omega$  impedance and that the package ground leads and backside ground paddle are connected directly to the ground plane.

Use a sufficient number of via holes to connect the top and bottom ground planes. The evaluation circuit board shown in Figure 17 is available from Analog Devices, Inc., upon request.

## BILL OF MATERIALS

Table 4. Bill of Materials for the [EV1HMC1161LP5](#)

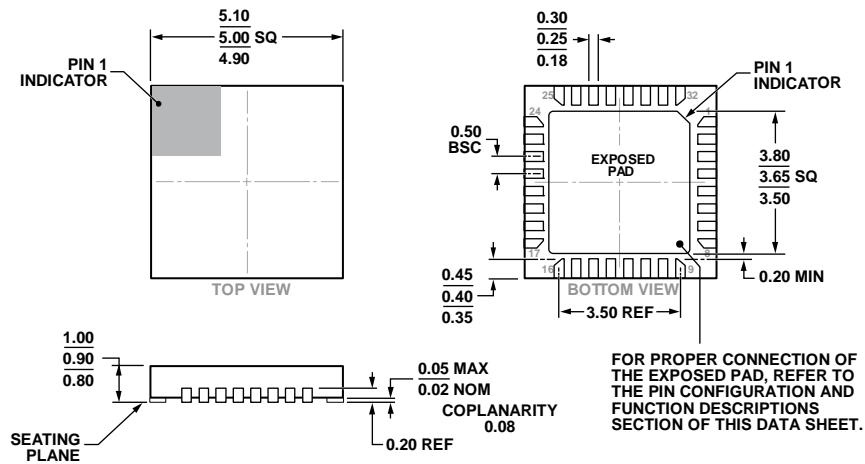
| Item             | Description                          |
|------------------|--------------------------------------|
| J1 to J4         | PCB mount SMA RF connectors          |
| J5, J6           | 2 mm dc headers                      |
| C1 to C3         | 100 pF capacitors, 0402 package      |
| C4               | 1000 pF capacitor, 0402 package      |
| C5 to C7         | 2.2 $\mu$ F tantalum capacitors      |
| C8               | 0.01 $\mu$ F capacitor, 0603 package |
| U1               | <a href="#">HMC1161</a> VCO          |
| PCB <sup>1</sup> | 110225 evaluation board <sup>2</sup> |

<sup>1</sup> Circuit board material is Rogers 4350.

<sup>2</sup> Reference this number when ordering the complete evaluation PCB.

# PACKAGING AND ORDERING INFORMATION

## OUTLINE DIMENSIONS



COMPLIANT TO JEDEC STANDARDS MO-220-VHHD-4.

Figure 18. 32-Lead Lead Frame Chip Scale Package [LFCSP\_VQ]  
 5 mm × 5 mm Body, Very Thin Quad  
 (HCP-32-1)  
 Dimensions shown in millimeters

## ORDERING GUIDE

| Model <sup>1</sup> | Temperature Range | MSL Rating <sup>2</sup> | Package Description                | Package Option | Qty. | Branding <sup>3</sup> |
|--------------------|-------------------|-------------------------|------------------------------------|----------------|------|-----------------------|
| HMC1161LP5E        | -40°C to +85°C    | MSL3                    | 32-Lead LFCSP_VQ                   | HCP-32-1       |      | H1161<br>XXXX         |
| HMC1161LP5ETR      | -40°C to +85°C    | MSL3                    | 32-Lead LFCSP_VQ, 7" Tape and Reel | HCP-32-1       | 500  | H1161<br>XXXX         |
| EV1HMC1161LP5      |                   |                         | Evaluation Board                   |                |      |                       |

<sup>1</sup> The HMC1161LP5E and HMC1161LP5ETR are RoHS compliant parts.

<sup>2</sup> See the Absolute Maximum Ratings section, Table 2.

<sup>3</sup> XXXX is a placeholder for the 4-digit lot number.

Компания «Океан Электроники» предлагает заключение долгосрочных отношений при поставках импортных электронных компонентов на взаимовыгодных условиях!

Наши преимущества:

- Поставка оригинальных импортных электронных компонентов напрямую с производств Америки, Европы и Азии, а так же с крупнейших складов мира;
- Широкая линейка поставок активных и пассивных импортных электронных компонентов (более 30 млн. наименований);
- Поставка сложных, дефицитных, либо снятых с производства позиций;
- Оперативные сроки поставки под заказ (от 5 рабочих дней);
- Экспресс доставка в любую точку России;
- Помощь Конструкторского Отдела и консультации квалифицированных инженеров;
- Техническая поддержка проекта, помощь в подборе аналогов, поставка прототипов;
- Поставка электронных компонентов под контролем ВП;
- Система менеджмента качества сертифицирована по Международному стандарту ISO 9001;
- При необходимости вся продукция военного и аэрокосмического назначения проходит испытания и сертификацию в лаборатории (по согласованию с заказчиком);
- Поставка специализированных компонентов военного и аэрокосмического уровня качества (Xilinx, Altera, Analog Devices, Intersil, Interpoint, Microsemi, Actel, Aeroflex, Peregrine, VPT, Syfer, Eurofarad, Texas Instruments, MS Kennedy, Miteq, Cobham, E2V, MA-COM, Hittite, Mini-Circuits, General Dynamics и др.);

Компания «Океан Электроники» является официальным дистрибьютором и эксклюзивным представителем в России одного из крупнейших производителей разъемов военного и аэрокосмического назначения «JONHON», а так же официальным дистрибьютором и эксклюзивным представителем в России производителя высокотехнологичных и надежных решений для передачи СВЧ сигналов «FORSTAR».



## JONHON

«JONHON» (основан в 1970 г.)

Разъемы специального, военного и аэрокосмического назначения:

(Применяются в военной, авиационной, аэрокосмической, морской, железнодорожной, горно- и нефтедобывающей отраслях промышленности)

«FORSTAR» (основан в 1998 г.)

ВЧ соединители, коаксиальные кабели,  
кабельные сборки и микроволновые компоненты:

(Применяются в телекоммуникациях гражданского и специального назначения, в средствах связи, РЛС, а так же военной, авиационной и аэрокосмической отраслях промышленности).



Телефон: 8 (812) 309-75-97 (многоканальный)

Факс: 8 (812) 320-03-32

Электронная почта: [ocean@oceanchips.ru](mailto:ocean@oceanchips.ru)

Web: <http://oceanchips.ru/>

Адрес: 198099, г. Санкт-Петербург, ул. Калинина, д. 2, корп. 4, лит. А