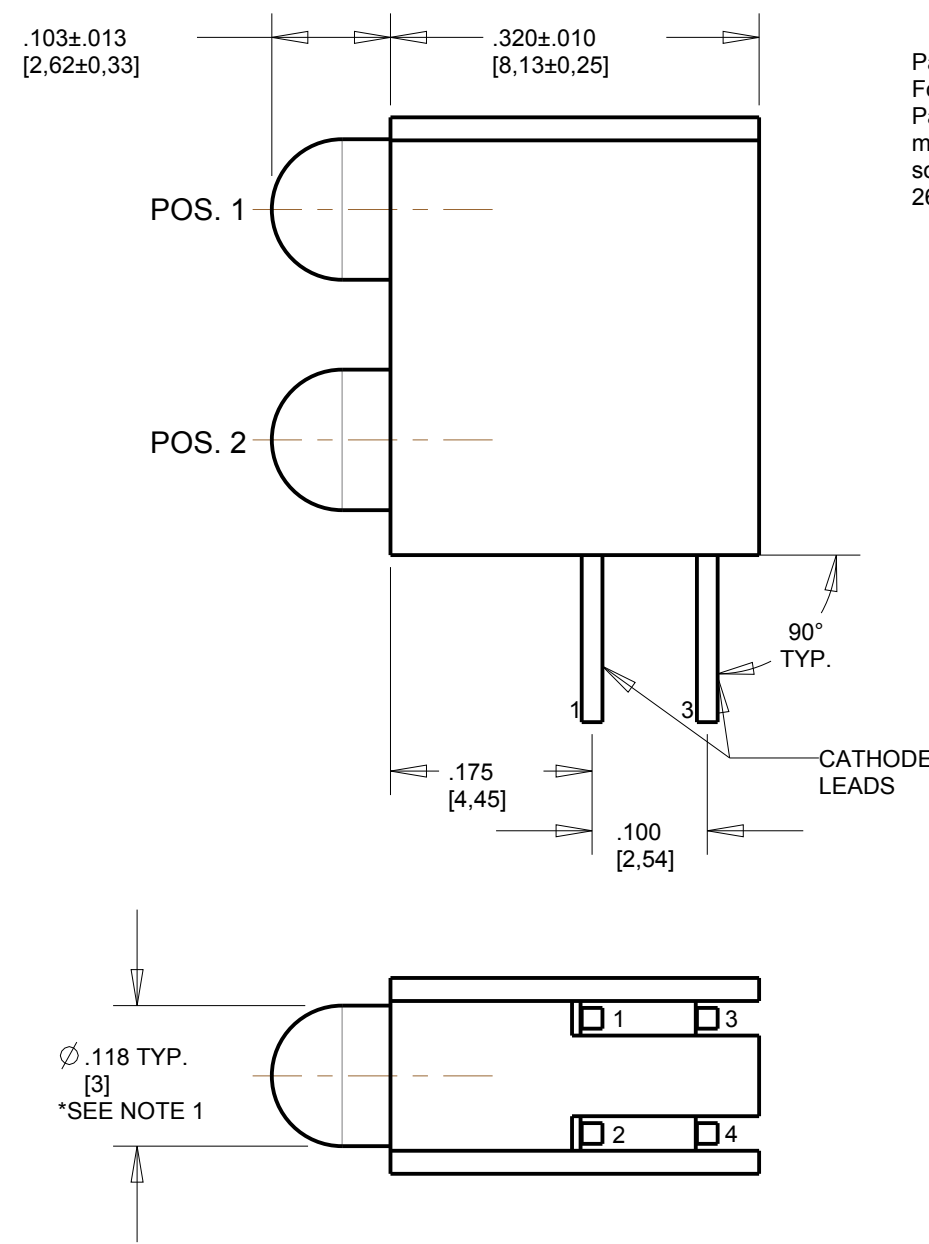
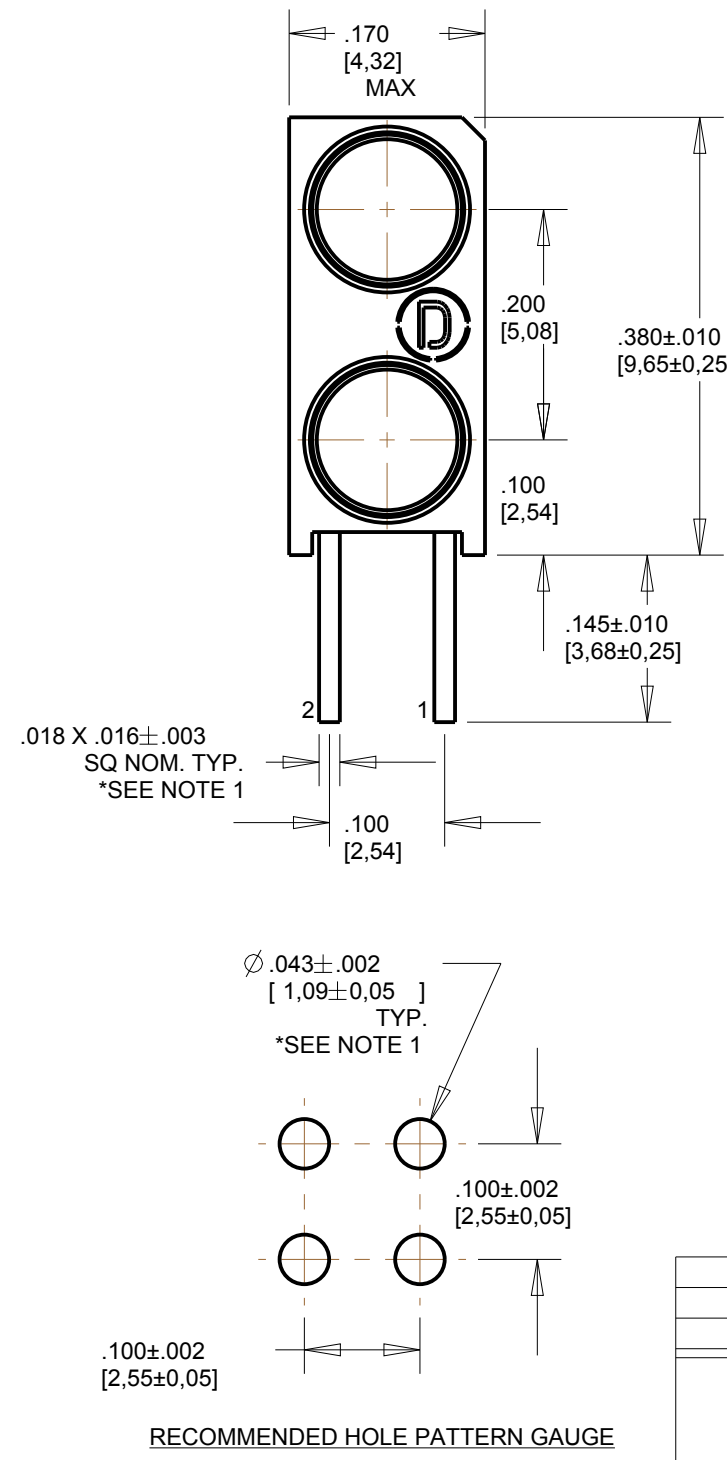
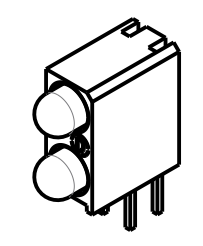


| ASSY. NO. (CAT. NO.) | LED COLOR | |
|-------------------------|------------|------------|
| | POSITION 1 | POSITION 2 |
| 553-0101F | BLANK | RED |
| 553-0102F | BLANK | GREEN |
| 553-0103F | BLANK | YELLOW |
| 553-0107F | BLANK | ORANGE |
| 553-0108F | BLANK | BLUE |
| 553-0110F | RED | BLANK |
| 553-0111F | RED | RED |
| 553-0112F | RED | GREEN |
| 553-0113F | RED | YELLOW |
| 553-0118F | RED | BLUE |
| 553-0120F | GREEN | BLANK |
| 553-0121F | GREEN | RED |
| 553-0122F | GREEN | GREEN |
| 553-0123F | GREEN | YELLOW |
| 553-0127F | GREEN | ORANGE |
| 553-0128F | GREEN | BLUE |
| 553-0130F | YELLOW | BLANK |
| 553-0131F | YELLOW | RED |
| 553-0132F | YELLOW | GREEN |
| 553-0133F | YELLOW | YELLOW |
| 553-0171F | ORANGE | RED |
| 553-0172F | ORANGE | GREEN |
| 553-0173F | ORANGE | YELLOW |
| 553-0177F | ORANGE | ORANGE |
| 553-0181F | BLUE | RED |
| 553-0182F | BLUE | GREEN |
| 553-0188F | BLUE | BLUE |
| 553-0199F | WHITE | WHITE |
| 553-0201F | BLANK | RED |
| 553-0202F | BLANK | GREEN |
| 553-0203F | BLANK | YELLOW |
| 553-0210F | RED | BLANK |
| 553-0211F | RED | RED |
| 553-0212F | RED | GREEN |
| 553-0213F | RED | YELLOW |
| 553-0220F | GREEN | BLANK |
| 553-0221F | GREEN | RED |
| 553-0222F | GREEN | GREEN |
| 553-0223F | GREEN | YELLOW |
| 553-0230F | YELLOW | BLANK |
| 553-0231F | YELLOW | RED |
| 553-0232F | YELLOW | GREEN |
| 553-0233F | YELLOW | YELLOW |
| 553-0301F | BLANK | RED |
| 553-0302F | BLANK | GREEN |
| 553-0303F | BLANK | YELLOW |
| 553-0310F | RED | BLANK |
| 553-0311F | RED | RED |
| 553-0312F | RED | GREEN |
| 553-0313F | RED | YELLOW |
| 553-0320F | GREEN | BLANK |
| 553-0321F | GREEN | RED |
| 553-0322F | GREEN | GREEN |
| 553-0323F | GREEN | YELLOW |
| 553-0331F | YELLOW | RED |
| 553-0332F | YELLOW | GREEN |
| 553-0333F | YELLOW | YELLOW |



RoHS COMPLIANT 553-0XXXF
 Part Numbers with the "F" suffix ending are RoHS Compliant.
 For example: 553-0101F
 Packaging is marked with "RoHS Compliant" label or equivalent markings. Parts can be wave soldered, dip soldered or hand soldered using typical lead-free soldering process with max 260°C temp. for 5 sec.

| BIN | LIMITS (WHITE LED) (CHROMATICITY COORDINATES) | | | | |
|-----|--|-------|-------|-------|-------|
| | X | Y | Z | U | |
| A3 | X | 0.270 | 0.270 | 0.250 | 0.250 |
| | Y | 0.275 | 0.325 | 0.300 | 0.250 |
| A4 | X | 0.270 | 0.250 | 0.250 | 0.270 |
| | Y | 0.275 | 0.250 | 0.200 | 0.225 |
| B3 | X | 0.290 | 0.290 | 0.270 | 0.270 |
| | Y | 0.300 | 0.350 | 0.325 | 0.275 |
| B4 | X | 0.290 | 0.270 | 0.270 | 0.290 |
| | Y | 0.300 | 0.275 | 0.225 | 0.250 |
| C3 | X | 0.310 | 0.310 | 0.290 | 0.290 |
| | Y | 0.325 | 0.375 | 0.350 | 0.300 |
| C4 | X | 0.310 | 0.290 | 0.290 | 0.310 |
| | Y | 0.325 | 0.300 | 0.250 | 0.275 |
| D3 | X | 0.330 | 0.330 | 0.310 | 0.310 |
| | Y | 0.350 | 0.400 | 0.375 | 0.325 |
| D4 | X | 0.330 | 0.310 | 0.310 | 0.330 |
| | Y | 0.350 | 0.325 | 0.275 | 0.300 |



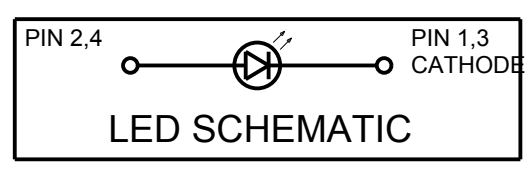
SCALE 2.000



ATTENTION:
 OBSERVE PRECAUTIONS FOR
 HANDLING ELECTROSTATIC
 SENSITIVE DEVICES

NOTES:

- (FOR ORANGE: LEADS .018 SQ. NOM.), LED BODY ϕ .115±.010 AND THE PC BOARD TOLERANCE ON LEAD THICKNESS TO BE ±.003.
- LED LEAD DIMENSIONS SHOWN ARE MEASURED AT HOUSING EXIT.
- LEADS TO FIT INTO HOLES SPACED AS PER PATTERN.
- PIN NUMBERS FOR REFERENCE ONLY, DESIGNATION NON-EXISTENT ON PART.
- DIALIGHT PART NUMBERS: 553-0XXXF.
- THIS ASSEMBLY CONTAINS ELECTROSTATIC DISCHARGE SENSITIVE DEVICES (ESDS). MAINTAIN ALL PRECAUTIONARY MEASURES DURING ASSEMBLY, HANDLING, AND STORAGE IN ACCORDANCE WITH IPC-A-610.



| 553-01XXXF | | | | | | |
|--|--------|------|------|------|---------|-----------------|
| OPERATING CHARACTERISTICS AT 25 °C AMBIENT: 10 mA LEDs | | | | | | |
| LED CHARACTERISTICS | COLOR | MIN. | TYP. | MAX. | UNITS | TEST CONDITIONS |
| LUMINOUS INTENSITY | RED | 2.5 | 8.7 | 18 | mcd | $I_F = 10$ mA |
| | YELLOW | 1.7 | 5.6 | — | | |
| | GREEN | 5.6 | 12.6 | 29 | | |
| | BLUE | 11 | 16 | 23 | | |
| | ORANGE | 3.4 | 7.0 | 10.8 | | |
| | WHITE | 400 | 1100 | 1900 | | |
| PEAK WAVELENGTH | RED | | 635 | | nm | $I_F = 10$ mA |
| | YELLOW | | 588 | | | |
| | GREEN | | 565 | | | |
| | BLUE | | 468 | | | |
| | ORANGE | | 600 | | | |
| | WHITE | | | | | |
| DOMINANT WAVELENGTH | RED | 615 | 625 | 632 | nm | $I_F = 10$ mA |
| | YELLOW | 585 | 590 | 595 | | |
| | GREEN | 564 | 568 | 573 | | |
| | BLUE | 460 | 467 | 475 | | |
| | ORANGE | 597 | 602 | 616 | | |
| | WHITE | | | | | |
| FORWARD VOLTAGE | RED | | 2.0 | 2.6 | V | $I_F = 10$ mA |
| | YELLOW | | 2.1 | 2.6 | | |
| | GREEN | | 2.1 | 2.6 | | |
| | BLUE | 2.0 | 2.7 | 4.1 | | |
| | ORANGE | 1.5 | 1.9 | 3.5 | | |
| | WHITE | | 3.5 | 4.0 | | |
| REVERSE CURRENT | RED | | | 100 | μ A | $V_R = 5$ V |
| | YELLOW | | | 100 | | |
| | GREEN | | | 100 | | |
| | BLUE | | | 10 | | |
| | ORANGE | | | 100 | | |
| | WHITE | | | 100 | | |
| VIEWING ANGLE | RED | | 60 | | DEGREE | $I_F = 10$ mA |
| | YELLOW | | 60 | | | |
| | GREEN | | 60 | | | |
| | BLUE | | 100 | | | |
| | ORANGE | | 60 | | | |
| | WHITE | | 45 | | | |

| 553-03XXXF | | | | | | |
|--|--------|------|------|------|---------|-----------------|
| OPERATING CHARACTERISTICS AT 25 °C AMBIENT: 5 V INTEGRAL RESISTOR LEDs | | | | | | |
| LED CHARACTERISTICS | COLOR | MIN. | TYP. | MAX. | UNITS | TEST CONDITIONS |
| LUMINOUS INTENSITY | RED | 8.7 | 29.0 | | mcd | $V_F = 5$ V |
| | YELLOW | 3.7 | 12.6 | | | |
| | GREEN | 5.6 | 19.0 | | | |
| PEAK WAVELENGTH | RED | | 635 | | nm | $I_F = 10$ mA |
| | YELLOW | | 585 | | | |
| | GREEN | | 565 | | | |
| FORWARD CURRENT | RED | | 10 | 20 | mA | $V_F = 5$ V |
| | YELLOW | | 10 | 20 | | |
| | GREEN | | 10 | 20 | | |
| REVERSE CURRENT | RED | | | 100 | μ A | $V_R = 5$ V |
| | YELLOW | | | 100 | | |
| | GREEN | | | 100 | | |
| VIEWING ANGLE | ALL | | 60 | | DEGREE | |

| 553-02XXXF | | | | | | |
|---|--------|------|------|------|---------|-----------------|
| OPERATING CHARACTERISTICS AT 25 °C AMBIENT: 2 mA LOW CURRENT LEDs | | | | | | |
| LED CHARACTERISTICS | COLOR | MIN. | TYP. | MAX. | UNITS | TEST CONDITIONS |
| LUMINOUS INTENSITY | RED | 0.75 | 2.5 | | mcd | $I_F = 2$ mA |
| | YELLOW | 0.4 | 4.5 | | | |
| | GREEN | 0.4 | 1.1 | | | |
| PEAK WAVELENGTH | RED | | 635 | | nm | $I_F = 2$ mA |
| | YELLOW | | 585 | | | |
| | GREEN | | 565 | | | |
| FORWARD VOLTAGE | RED | 1.7 | 2.2 | | V | $I_F = 2$ mA |
| | YELLOW | 1.8 | 2.2 | | | |
| | GREEN | 1.9 | 2.2 | | | |
| REVERSE CURRENT | ALL | | | 10 | μ A | $V_R = 5$ V |
| VIEWING ANGLE | ALL | | 60 | | DEGREE | |

| 553-03XXXF | | | | |
|---|-------------|-------|--------|-------|
| ABSOLUTE MAXIMUM RATINGS AT 25 °C AMBIENT | | | | |
| | RED | GREEN | YELLOW | UNITS |
| 5 V INTEGRAL RESISTOR LEDs | | | | |
| CONTINUOUS FORWARD VOLTAGE | 7.5 | | | V |
| REVERSE VOLTAGE | 5 | | | V |
| LINEAR DERATING FROM 50 °C | 0.071 | | | V/°C |
| LEAD SOLDERING TEMPERATURE (.063" [1.6mm] FROM BODY) FOR 5 SEC. | 260 | | | °C |
| OPERATING TEMPERATURE | -40 TO +85 | | | °C |
| STORAGE TEMPERATURE | -55 TO +100 | | | °C |

| 553-01XXXF | | | | | | | |
|---|-------------|--------|-------------|------|-------------|-------|-------|
| ABSOLUTE MAXIMUM RATINGS AT 25 °C AMBIENT | | | | | | | |
| | RED | YELLOW | GREEN | BLUE | ORANGE | WHITE | UNITS |
| POWER DISSIPATION | 100 | 60 | 120 | 120 | 135 | 120 | mW |
| PEAK FORWARD CURRENT (1/5 DUTY CYCLE, 1 ms PULSE WIDTH) (1/10, .1ms FOR BLUE) ($t_c < 10 \mu$ s D=.005 FOR ORANGE) | 90 | 60 | 90 | 100 | 500 | 100 | mA |
| CONTINUOUS FORWARD CURRENT | 30 | 20 | 30 | 30 | 30 | 30 | mA |
| LINEAR DERATING FROM 50 °C (30 °C FOR BLUE, 30 °C FOR WHITE) | 0.40 | 0.25 | 0.40 | .5 | 0.50 | .45 | mA/°C |
| REVERSE VOLTAGE | 5 | | | | | | V |
| LEAD SOLDERING TEMPERATURE (.063" [1.6mm] FROM BODY) FOR 5 SEC. | 260 | | | | | | °C |
| OPERATING TEMPERATURE | -55 TO +100 | | -40 TO +85 | | -55 TO +100 | | °C |
| STORAGE TEMPERATURE | -55 TO +100 | | -55 TO +100 | | -40 TO +100 | | °C |

| 553-02XXXF | | | | |
|---|-------------|-------|--------|-------|
| ABSOLUTE MAXIMUM RATINGS AT 25 °C AMBIENT: | | | | |
| | RED | GREEN | YELLOW | |
| 2 mA LOW CURRENT LEDs | | | | |
| POWER DISSIPATION | 20 | | | mW |
| PEAK FORWARD CURRENT (1/10 DUTY CYCLE, 0.1ms PULSE WIDTH) | 500 | | | mA |
| CONTINUOUS FORWARD CURRENT | 7 | | | mA |
| LINEAR DERATING FROM 95 °C | 0.7 | | | mA/°C |
| REVERSE VOLTAGE | 5 | | | V |
| LEAD SOLDERING TEMPERATURE (.063" [1.6mm] FROM BODY) FOR 5 SEC. | 260 | | | °C |
| OPERATING TEMPERATURE | -55 TO +100 | | | °C |
| STORAGE TEMPERATURE | -55 TO +100 | | | °C |

THIS DRAWING AND THE CONTENTS HEREIN ARE CONFIDENTIAL AND THE SOLE PROPERTY OF DIALIGHT CORP. REPRODUCTION OF THIS DRAWING OR CONSTRUCTION OF ANY PARTS WITHIN THIS DRAWING ARE FORBIDDEN WITHOUT THE WRITTEN CONSENT OF DIALIGHT CORP.

SCALE: 6.000

DRAWING NUMBER: **C-17277**

REV: **K**

TOLERANCES: UNLESS OTHERWISE SPECIFIED

FRACTIONS: ±1/64

DECIMALS (.XX): ±.02

DECIMALS (.XXX): ±.015

ANGLES: ±3°

FINISH

TITLE: **3mm LED BI-LEVEL CBI**
RoHS COMPLIANT

MATERIAL

Dialight 1501 ROUTE 34 SOUTH FARMINGDALE, NJ 07727 (732) 919-3119 www.dialight.com

FSCM 83330

SHEET 1 OF 1 FAMILY TABLES:

Компания «Океан Электроники» предлагает заключение долгосрочных отношений при поставках импортных электронных компонентов на взаимовыгодных условиях!

Наши преимущества:

- Поставка оригинальных импортных электронных компонентов напрямую с производств Америки, Европы и Азии, а так же с крупнейших складов мира;
- Широкая линейка поставок активных и пассивных импортных электронных компонентов (более 30 млн. наименований);
- Поставка сложных, дефицитных, либо снятых с производства позиций;
- Оперативные сроки поставки под заказ (от 5 рабочих дней);
- Экспресс доставка в любую точку России;
- Помощь Конструкторского Отдела и консультации квалифицированных инженеров;
- Техническая поддержка проекта, помощь в подборе аналогов, поставка прототипов;
- Поставка электронных компонентов под контролем ВП;
- Система менеджмента качества сертифицирована по Международному стандарту ISO 9001;
- При необходимости вся продукция военного и аэрокосмического назначения проходит испытания и сертификацию в лаборатории (по согласованию с заказчиком);
- Поставка специализированных компонентов военного и аэрокосмического уровня качества (Xilinx, Altera, Analog Devices, Intersil, Interpoint, Microsemi, Actel, Aeroflex, Peregrine, VPT, Syfer, Eurofarad, Texas Instruments, MS Kennedy, Miteq, Cobham, E2V, MA-COM, Hittite, Mini-Circuits, General Dynamics и др.);

Компания «Океан Электроники» является официальным дистрибьютором и эксклюзивным представителем в России одного из крупнейших производителей разъемов военного и аэрокосмического назначения «JONHON», а так же официальным дистрибьютором и эксклюзивным представителем в России производителя высокотехнологичных и надежных решений для передачи СВЧ сигналов «FORSTAR».



JONHON

«JONHON» (основан в 1970 г.)

Разъемы специального, военного и аэрокосмического назначения:

(Применяются в военной, авиационной, аэрокосмической, морской, железнодорожной, горно- и нефтедобывающей отраслях промышленности)

«FORSTAR» (основан в 1998 г.)

ВЧ соединители, коаксиальные кабели, кабельные сборки и микроволновые компоненты:

(Применяются в телекоммуникациях гражданского и специального назначения, в средствах связи, РЛС, а так же военной, авиационной и аэрокосмической отраслях промышленности).



Телефон: 8 (812) 309-75-97 (многоканальный)

Факс: 8 (812) 320-03-32

Электронная почта: ocean@oceanchips.ru

Web: <http://oceanchips.ru/>

Адрес: 198099, г. Санкт-Петербург, ул. Калинина, д. 2, корп. 4, лит. А