

KUL Series Latching Panel Plug-in Relay

- Magnetic latching relay
- Single or dual wound DC coils or single wound AC coils
- 1, 2, and 3 pole Form C contact arrangement
- Reset occurs by reversing polarity in a single coil relay or by energizing the reset winding in dual coil relays
- Various mounting and socket styles

Typical applications

Alarm systems, machine tools, battery chargers, process and power controls, pressure washers, paving equipment



Approvals

UL E22575; CSA LR15734
Technical data of approved types on request

Contact Data

| | | |
|-------------------------------|---|--------------|
| Contact arrangement | 1 form C (CO), 2 form C (CO), 3 form C (CO) | |
| Rated voltage | 240VAC | |
| Rated current | 10A | |
| Contact material | Ag | AgCdO |
| Min. recommended contact load | 100mA, 12VDC | 300mA, 12VDC |
| Frequency of operation | 360 ops./hour | |
| Operate/release time max. | 25/25ms | |

Contact ratings

| Type | Load | Cycles | |
|----------------------|-------------------------------|---------------------|---------------------|
| UL 508 Ag | 5A, 240VAC | 100x10 ³ | |
| | 1/6HP, 120VAC | | |
| | 1/3HP, 240VAC | | |
| | 0.5A, 120VDC | | |
| | 2.5A, 120VAC, tungsten | | |
| AgCdO | 10A, 250VAC | 100x10 ³ | |
| | 1/3HP, 120VAC | | |
| | 1/2HP, 250VAC | | |
| | 5A, 120VAC, tungsten | | |
| | 0.5A, 125VDC | | |
| | 10A, 28VDC | | 100x10 ³ |
| | 10FLA, 30LRA, 125VAC | | |
| 5FLA, 15LRA, 250VAC | | | |
| | 125VA, pilot duty, 125/250VAC | | |
| Mechanical endurance | 10x10 ⁶ ops. | | |

Coil Data

| | |
|-------------------------------------|---|
| Coil voltage range | 12 to 110VDC (single and dual coil) 24 to 240VAC (single coil) 24 to 120VAC (dual coil) |
| Coil insulation system according UL | Class B |

Coil versions, DC coil 1)

| Coil code | Rated voltage VDC | Operate voltage VDC | Coil resistance Ω±10% | Rated coil power W |
|--------------|-------------------|---------------------|-----------------------|--------------------|
| Single coil | | | | |
| 12 | 12 | 9.0 | 120 | 1.2 |
| 24 | 24 | 18.0 | 472 | 1.25 |
| 48 | 48 | 36.0 | 1800 | 1.3 |
| 110 | 110 | 82.5 | 10000 | 1.25 |
| Dual coil 2) | | | | |
| 12 | 12 | 9.0 | 90 | 1.6 |
| 24 | 24 | 18.0 | 350 | 1.65 |
| 48 | 48 | 36.0 | 1400 | 1.65 |
| 110 | 110 | 82.5 | 7400 | 1.65 |

1) Latch and reset coil voltages and resistances are the same (unlike coils on request).
2) Dual coil available only with 1 or 2 form C contacts.
All figures are given for coil without preenergization, at ambient temperature +23°C.

Coil versions, AC coil 3)

| Coil code | Rated voltage VAC | Operate voltage VAC | Latch coil resistance Ω±15% | Reset coil resistance Ω±15% | Reset coil resistor Ω |
|-------------|-------------------|---------------------|-----------------------------|-----------------------------|-----------------------|
| Single coil | | | | | |
| 24 | 24 | 20.4 | 176 | – | 680 |
| 120 | 120 | 102.0 | 3700 | – | 15000 |
| 240 | 240 | 204.0 | 179000 | – | 68000 |
| Dual coil | | | | | |
| 24 | 24 | 20.4 | 100 | 250 | – |
| 120 | 120 | 102.0 | 2525 | 2200 | 5600 |

3) AC coils use diodes. Diodes and resistors included inside relay with 1 and 2 Form C contacts. For 3 Form C relay, the customer must furnish and wire diodes and resistors externally (1N4007 is recommended diode).
All figures are given for coil without preenergization, at ambient temperature +23°C.

Insulation Data

| | |
|-------------------------------|----------------------|
| Initial dielectric strength | |
| between open contacts | 500V _{rms} |
| between contact and coil | 1500V _{rms} |
| between adjacent contacts | 1500V _{rms} |
| Initial insulation resistance | |
| between insulated elements | 100MΩ |

KUL Series Latching Panel Plug-in Relay (Continued)

Other Data

Material compliance: EU RoHS/ELV, China RoHS, REACH, Halogen content refer to the Product Compliance Support Center at www.te.com/customersupport/rohssupportcenter

| | |
|--------------------------------------|--|
| Ambient temperature | |
| DC coil | Single coil: -45°C to 70°C Dual coil: -45°C to 50°C |
| AC coil | Single coil: -45°C to 70°C |
| Category of environmental protection | |
| IEC 61810 | RTI - dust protected |
| Terminal type | Quick connects (QC) .187 |
| Weight | 96g |
| Packaging/unit | tray/25 pcs., box/150pcs. |

Accessories

For details see datasheet Sockets and Accessories, KUP Relays

| Product Code | Description |
|--------------|--|
| 27E893 | DIN socket (use 20C318 clip) |
| 27E121 | Track mount socket (use 20C314 clips) |
| 27E043 | Chassis mount/solder eyelet socket (use 20C254 clip) |
| 27E046 | Chassis mount/PCB socket (use 20C254 clip) |
| 27E067 | Chassis mount/quick connect socket (use 20C254 clip) |
| 27E396 | Snap-in/quick connect socket (use 20C254 clip) |

Dimensions

Plain case

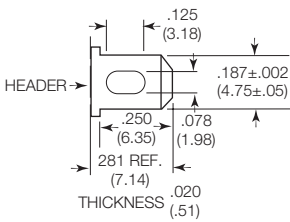


Bracket mount case



Terminal dimensions

4.75mm (.187) quick connect

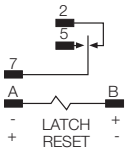


KUL Series Latching Panel Plug-in Relay (Continued)

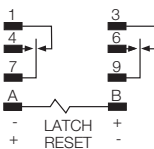
Terminal assignment

Bottom view on pins – Contact positions shown in diagrams is with the “RESET” input having been energized last.

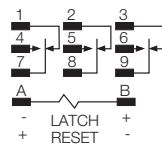
Single Coil – DC
1 Form C



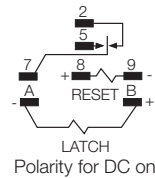
2 Form C



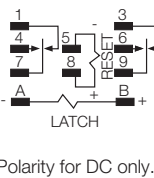
3 Form C



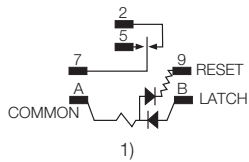
Dual Coil – AC or DC
1 Form C



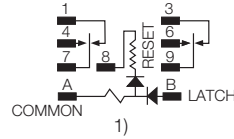
2 Form C



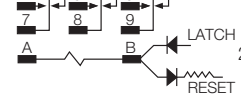
Single Coil – AC
1 Form C



2 Form C



3 Form C



- 1) Do not connect any low impedance loads from terminal B to A.
- 2) Resistor and diodes connected by customer. See Coil Data Chart for resistor value. Recommended using 1N4007 diode.

Product code structure

Typical product code **KUL -11 D 1 1 D -12**

| | | | | | | | |
|---------------------------------------|---|--|--------------------|----------------------|--|--|--|
| Type | KUL Enclosed magnetic latching relay | | | | | | |
| Contact arrangement and rating | 5 1 form C (1 CO) | | 11 2 form C (2 CO) | | | | |
| | 14 3 form C (3 CO) | | | | | | |
| Coil Input | A AC | | | D DC | | | |
| Mounting and options | 1 Socket mount (plain) case | | | 5 Bracket mount case | | | |
| Terminal and contact material | 1 4.75mm (.187in) quick connect/solder; Ag, 5A | | | | | | |
| | 5 4.75mm (.187in) quick connect/solder; AgCdO, 10A | | | | | | |
| | Note: 5.21mm (.205) QC and PCB terminals available on request | | | | | | |
| Number of coils | S Single coil | | | D Dual coil | | | |
| Coil voltage | Coil code: please refer to coil versions table | | | | | | |

| Product Code | Arrangement | Material | Coil | Case Style | Terminals | Part Number |
|----------------|----------------|----------|---------|------------|-----------|-------------|
| KUL-5A15S-120 | 1 Form C, 1 CO | AgCdO | 120 VAC | Plain case | Plug-in | 1393116-4 |
| KUL-11A15S-24 | 2 Form C, 2 CO | | 24 VAC | | | 2-1393115-7 |
| KUL-11A15S-120 | | | 120 VAC | | | 2-1393115-6 |
| KUL-11D15D-12 | | | 12 VDC | | | 3-1393115-1 |
| KUL-11D15D-24 | | | 24 VDC | | | 3-1393115-2 |
| KUL-11D15D-48 | | | 48 VDC | | | 3-1393115-3 |
| KUL-11D15S-12 | | | 12 VDC | | | 3-1393115-4 |
| KUL-11D15S-24 | | | 24 VDC | | | 3-1393115-5 |

Компания «Океан Электроники» предлагает заключение долгосрочных отношений при поставках импортных электронных компонентов на взаимовыгодных условиях!

Наши преимущества:

- Поставка оригинальных импортных электронных компонентов напрямую с производств Америки, Европы и Азии, а так же с крупнейших складов мира;
- Широкая линейка поставок активных и пассивных импортных электронных компонентов (более 30 млн. наименований);
- Поставка сложных, дефицитных, либо снятых с производства позиций;
- Оперативные сроки поставки под заказ (от 5 рабочих дней);
- Экспресс доставка в любую точку России;
- Помощь Конструкторского Отдела и консультации квалифицированных инженеров;
- Техническая поддержка проекта, помощь в подборе аналогов, поставка прототипов;
- Поставка электронных компонентов под контролем ВП;
- Система менеджмента качества сертифицирована по Международному стандарту ISO 9001;
- При необходимости вся продукция военного и аэрокосмического назначения проходит испытания и сертификацию в лаборатории (по согласованию с заказчиком);
- Поставка специализированных компонентов военного и аэрокосмического уровня качества (Xilinx, Altera, Analog Devices, Intersil, Interpoint, Microsemi, Actel, Aeroflex, Peregrine, VPT, Syfer, Eurofarad, Texas Instruments, MS Kennedy, Miteq, Cobham, E2V, MA-COM, Hittite, Mini-Circuits, General Dynamics и др.);

Компания «Океан Электроники» является официальным дистрибьютором и эксклюзивным представителем в России одного из крупнейших производителей разъемов военного и аэрокосмического назначения «JONHON», а так же официальным дистрибьютором и эксклюзивным представителем в России производителя высокотехнологичных и надежных решений для передачи СВЧ сигналов «FORSTAR».



JONHON

«JONHON» (основан в 1970 г.)

Разъемы специального, военного и аэрокосмического назначения:

(Применяются в военной, авиационной, аэрокосмической, морской, железнодорожной, горно- и нефтедобывающей отраслях промышленности)

«FORSTAR» (основан в 1998 г.)

ВЧ соединители, коаксиальные кабели, кабельные сборки и микроволновые компоненты:

(Применяются в телекоммуникациях гражданского и специального назначения, в средствах связи, РЛС, а так же военной, авиационной и аэрокосмической отраслях промышленности).



Телефон: 8 (812) 309-75-97 (многоканальный)

Факс: 8 (812) 320-03-32

Электронная почта: ocean@oceanchips.ru

Web: <http://oceanchips.ru/>

Адрес: 198099, г. Санкт-Петербург, ул. Калинина, д. 2, корп. 4, лит. А