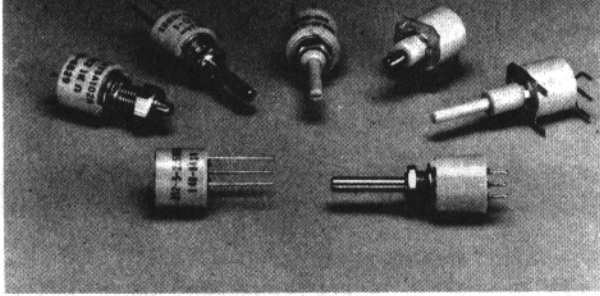


Series 392 and RV6/392M  
**0.5 Watt Thick-Film**  
Conductive-Plastic Potentiometer



**Series 392 Electrical Specifications**

*Resistance Range*

100Ω to 5 Megohms, linear; 500Ω to 2 Megohms, tapered (commercial).  
100Ω to 1 Megohm, linear; 500Ω to 1 Megohm, tapered (392M/RV6).

*Resistance Tolerance*

Linear, up to 1 Megohm  $\pm 10\%$ ; 1 Megohm to 5 Megohms  $\pm 20\%$ .  
Tapers, up to 250KΩ  $\pm 10\%$ ; 250KΩ to 5 Megohms  $\pm 20\%$ .

*Power Rating (Watts)*

0.5 watt maximum continuous power rating for linear taper, but voltage not to exceed rating. Full rating @ 70°C, derated linearly to zero watts at 120°C. Derate all non-linear tapers by multiplying wattage rating by 0.5. See Chart B, page 52. Bushingless style derated to .25 watt.

*Electrical Rotation*

295°  $\pm 5^\circ$

*Effective Rotation*

265°, +0°/-10°

*Tapers*

Right or left-hand available. See Chart A, page 51.

*Taper Tolerance*

$\pm 20\%$  of nominal resistance @ 50%  $\pm 3\%$  mechanical rotation

*End Resistance*

4Ω maximum for linear taper; 15Ω maximum for non-linear tapers.

*Dielectric Withstanding Voltage*

750 Vac for 60 seconds @ ATM pressure.  
350 Vac for 60 seconds @ 3.4 in. Hg.

*Working Voltage*

350 Vdc across end terminals, but power not to exceed rating.

*Resistance Temperature Characteristics*

See Chart C, page 52.

*Dynamic Noise*

Linear single controls maximum initial noise level 1.5% of total resistance. Measurement made using a constant current source and oscilloscope detection technique. 1% available on special order.

*Linearity*

$\pm 5\%$  independent linearity measured over 1% to 99% voltage ratio output.

*Voltage Coefficient*

.008%/Volt, maximum

**Description**

Our Series 392 and RV6/392M, are economical potentiometers designed to meet wave soldering applications for mounting to PC boards. They meet flow solderability and washability test requirements, and MIL-R-94 standards apply where appropriate.

Series 392M incorporates all the washable characteristics of the Series 392, the new military version Series 392M is now QPL listed under MIL-R-94 Style RV6. Turn to the stock options, page 56 for a complete listing of available types and stock values.

**Features**

- Washable and wave solderable
- Shaft seal standard
- Locking bushings available standard
- Low cost
- Made in accordance to MIL-R-94

## Series 392 Mechanical Specifications

### Mechanical Rotation

295° ±5°

### Stop Torque

3 lb. in. minimum (metal shaft)

2 lb. in. minimum (plastic shaft)

### Torque Range

.20 to 2.0 oz. in. Other torques available.

### Bushing Lengths

Metal: .25 in. (6.35mm), .375 in. (9.53mm), and .5 in. (12.7mm).

Plastic: .25 in. (6.35mm) and .375 in. (9.53 mm).

### Shafts, Standard

.125 in. (3.18mm) diameter

### Shaft Lengths

Metal: Lengths from flush with trimmer bushing to 3 in. (76.2mm) in 1/64 in. (0.40 mm) increments. Brass, nickel-plated.

Plastic: Standard lengths of 3/8 in. (9.53mm), 1/2 in. (12.7mm), 5/8 in. (15.88mm), 3/4 in. (19.05mm), and 7/8 in. (22.23mm) Flat is .094 ±.002 x .250 in. (2.39mm ±0.051 x 6.35 mm) long. Slot is in line with contact and the flat is opposite the contact.

### Switch

None available

### Seal

O-ring shaft seal standard all styles, and the complete unit is sealed for wave solder and wash processing. The shaft seal withstands 5 PSI pressure. Mounting seals are available. See Chart D, page 52.

### Housing

Thermoplastic polyester, blue (U.L. SE-O rating)

### Hardware

Mounting hardware available. Hex mounted nut 1/4 in. (6.35mm) x 32 thread, 5/16 in. (7.94mm) across flats 1/16 in. (1.59mm) thick. Internal tooth lockwasher, 13.32 in. (10.32mm) outside diameter x .025 in. (.64mm) thick. Hex jam nut 5/16 in. (7.94mm) across flats 5/32 in. (3.97mm) thick.

### Contact Material

Monel

### Solvent Resistance

Housing resistant to trichlorethylene, \*Chlorethene NU, \*\*Freon TMS, Freon TMC, carbon tetrachloride, toluene, MEK, ethyl acetate and gasoline. For solvents not listed, contact Factory.

## Mechanical Specifications continued

### Terminals

Solder-coated. P.C. pin or solder hook style. PC pins fit .100 in. (2.54mm) grid spacing and .034 in. (0.86mm) diameter board holes. Pin diameter is .028 in. (0.71mm).

### Weight (Aprox.)

Metal shaft & bushing .25 oz.; Plastic .1 oz.

\*T.M. Dow Chemical Co.

\*\*T.M. DuPont

## Series 392 Operational Specifications

### Operating Temperature Range

-40°C to +120°C.; Storage Temperature Range -55°C to +120°C.

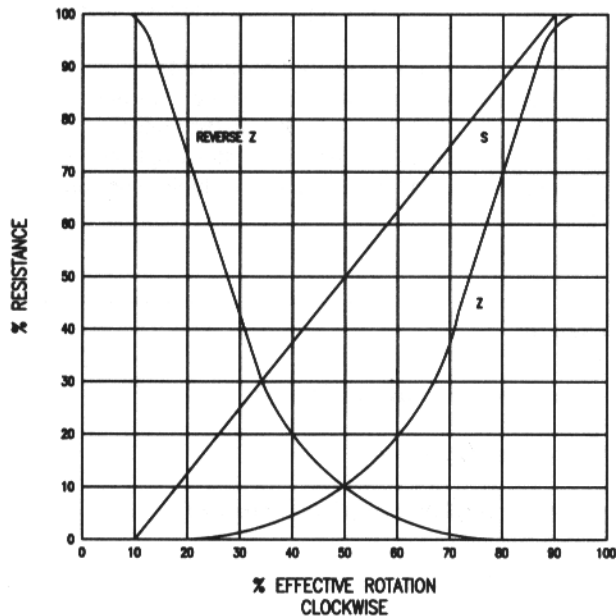
### Rotational Life

Rotational Life for linear control: 50,000 cycles, plain bushing style only. Change not to exceed 10% R (standard).

NOTE: SPECIFICATIONS SUBJECT TO CHANGE WITHOUT NOTICE.

Figure 1

Chart A



### Curves Standard

The "S" taper is linear, the change in resistance value being directly proportional to the degree of rotation. It can be used either as right-hand or left-hand taper.

The "Z" taper attains 10% resistance value at 50% of clockwise rotation (left-hand).

The reverse "Z" taper attains 10% resistance value at 50% of counter-clockwise rotation (right-hand).

For conformity and special output curves, consult Factory.

Mechanical Specifications continued, next column

Figure 2  
Chart B

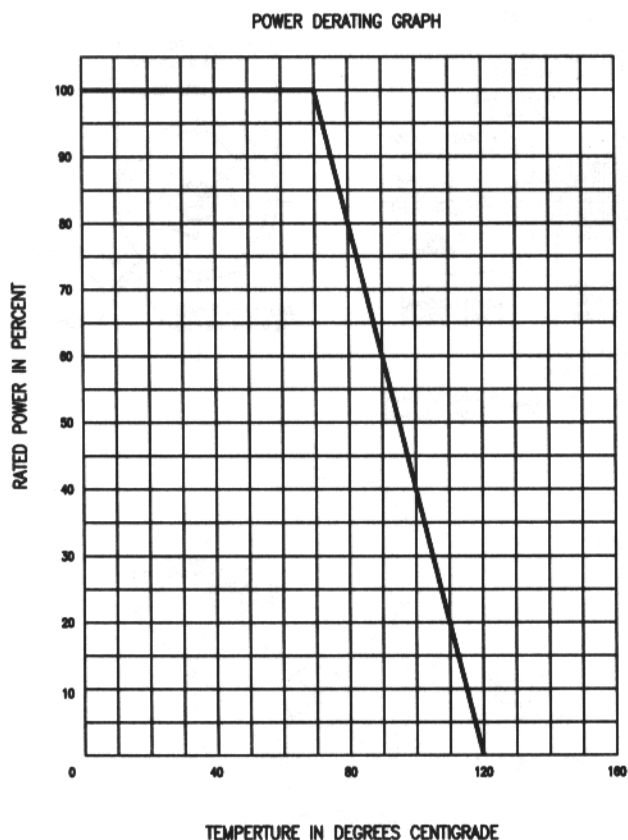
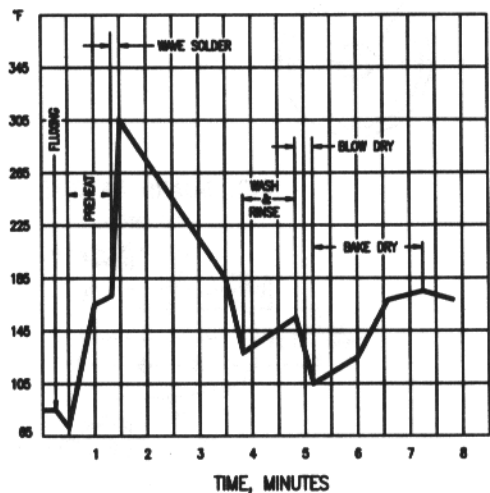


Figure 3  
Chart C

NOMINAL RESISTANCE	MAXIMUM PERCENT TEMPORARY RESISTANCE FROM 25°C						
	-55°C	-40°C	0°C	+25°C	+55°C	+85°C	+120°C
100 OHMS	±5.0	±4.0	±1.5	0	±1.5	±2.0	±3.5
10K OHMS	+7.0	+5.5	+2.0	0	±1.5	±2.5	±5.5
100K OHMS	+8.0	+6.0	+2.5	0	±2.0	±3.5	±6.0
1 MEGOHMS	+10.0	+8.0	+3.0	0	±2.5	±4.0	±7.5

Figure 4  
Chart D

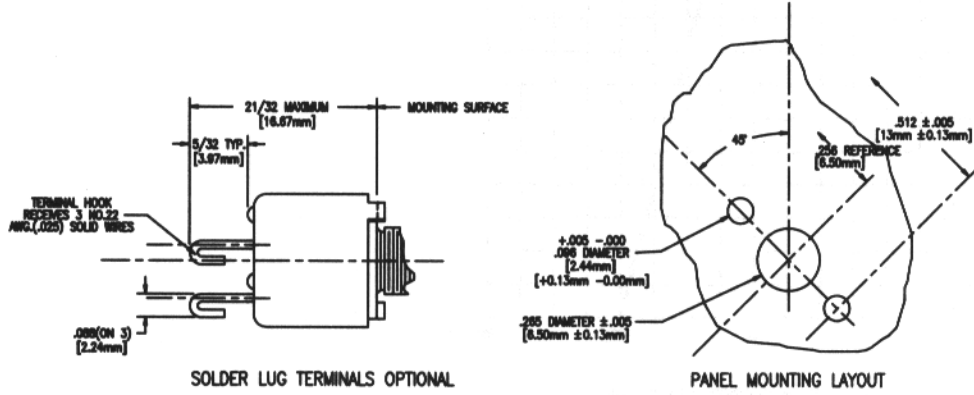
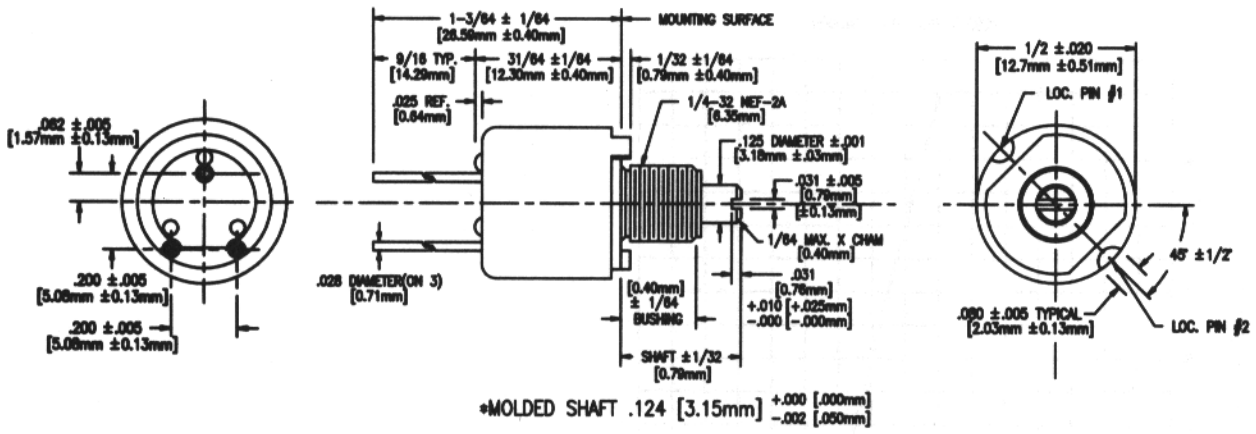


**Wave Solder And Board Wash Parameters  
Recommended Profile, Temperature on P.C. Board**

Process Limits	Temperature	Time
Preheat Maximum	195°F	1 minute
Solder Temperature Maximum	550°F	
Maximum differential temperature after solder in wash (3/4T)	72°F	
Wash Temperature	150-160°F	1 1/2 minutes
Dry Temperature	160-220°F	2 minute

Figure 5

Series 392 Potentiometer Dimensions



STOCK

BUSHING =  $1/4$ " [6.35mm] LONG  
 SHAFT =  $7/8$ " [22.23mm] LONG

Figure 6

Series 392-5 Trimmer Dimensions

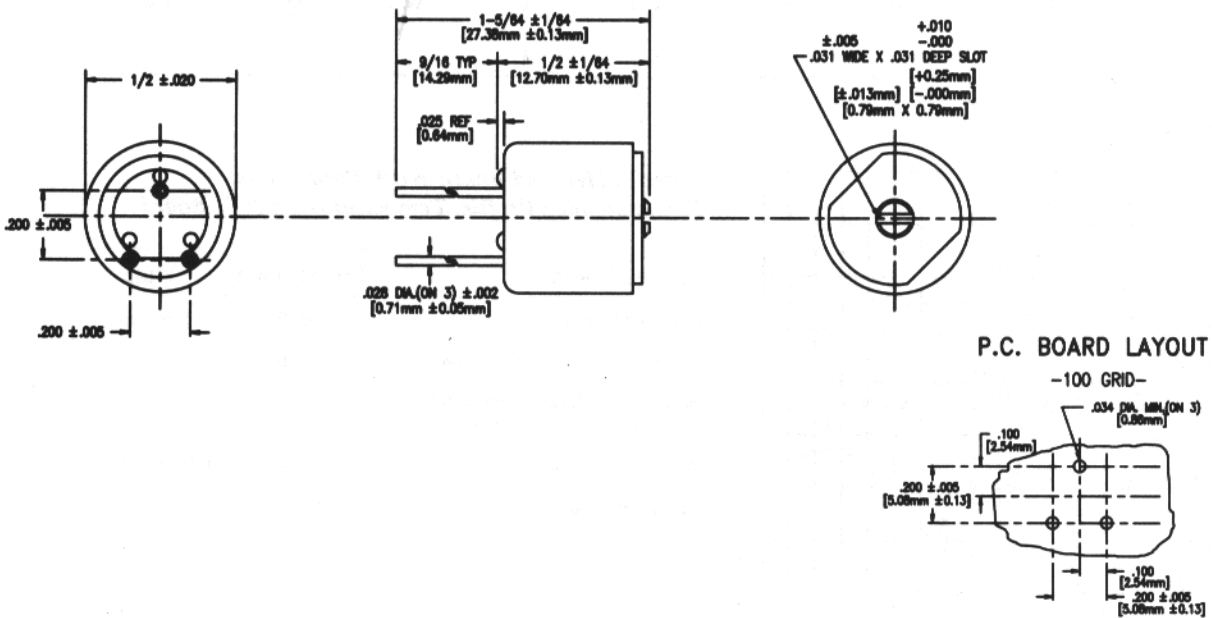


Figure 7

Series 392 B-56 Stud Mounting

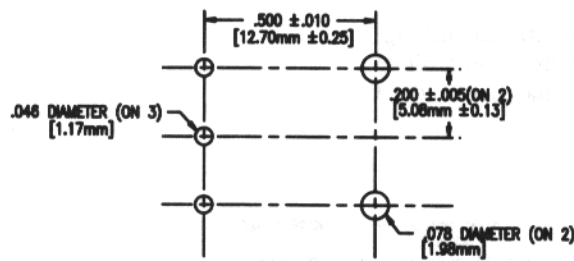
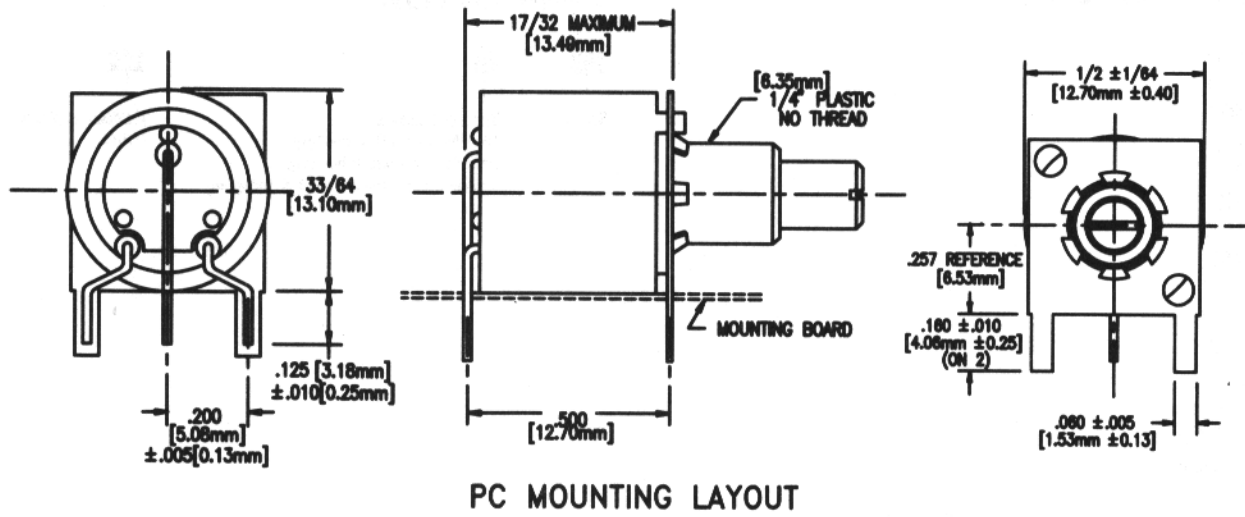
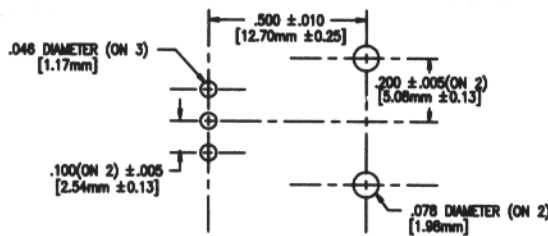
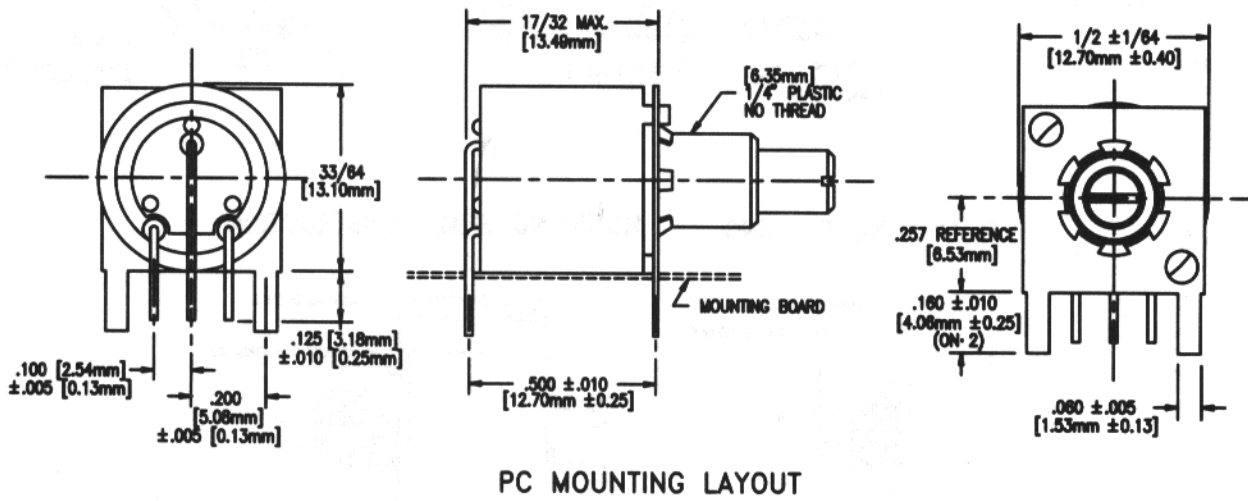


Figure 8

Series 392 B-57 Stud Mounting



Stock Values (Ohms)

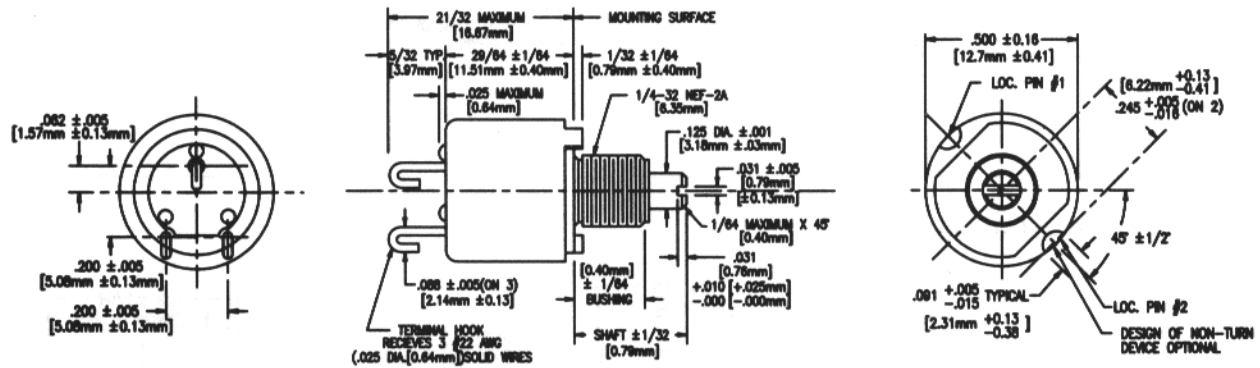
- 100
- 250
- 500
- 1K
- 2500
- 5K
- 10K
- 25K
- 50K
- 100K
- 250K
- 500K
- 1 Meg.
- 2.5 Meg.
- 5 Meg.

Example: **392-JA-100**

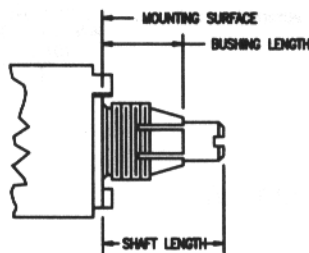
<b>392</b>	<b>JA</b>	<b>100</b>
Series	Shaft & Bushing	Resistance Value
	JA = Metal shaft & bushing	(Ohms)
	JB = Plastic shaft & bushing	
	5 (Trimmer) = Plastic shaft & faceplate	

Catalog Number	Description
392JA	Metal shaft and bushing
392JB	Plastic shaft and bushing
392-5 Trimmer	Plastic shaft and faceplate

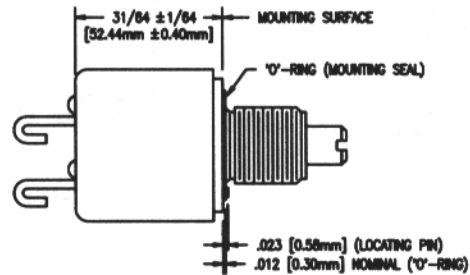
Figure 9  
Series 392M/RV6 Dimensions



SPLIT LOCKING BUSHING



MOUNTING SEAL CONSTRUCTION



**Series 392M/RV6 Standard Resistance Values**

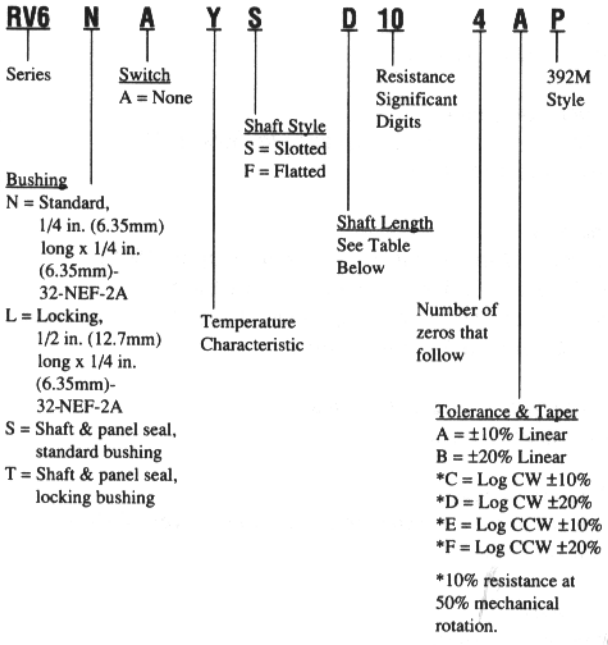
**Stock Values (Ohms/Linear Taper)**

<i>RV6NAY</i>		<i>RV6LAY</i>	
<i>SD</i>	<i>&amp; SL</i>	<i>SA</i>	<i>&amp; SD</i>
101A	252A	101A	252A
102A	253A	102A	253A
103A	254A	103A	254A
104A	501A	104A	501A
105A	502A	105A*	502A
153A	503A	153A	503A
154A	504A	154A*	504A
251A		251A*	205B*

Note: Special options available. Please consult Factory.  
 \*Made to order. Please consult Factory.

**Series 392M/RV6 How To Order**

Example: **RV6-N-A-Y-S-D-10-4-A-P**



**Shaft Length\*\***

Symbol	With 1/4 in. (6.35mm) Bushing N or S	With 1/2 in. (12.7mm) Bushing L or T
A	5/8 in. (15.88mm)	5/8 in. (15.88mm)
B	1/2 in. (12.7mm)	-
D	7/8 in. (22.23mm)	7/8 in. (22.23mm)
L	3/8 in. (9.53mm)	-

\*\*Shaft length from mounting surface.

Компания «Океан Электроники» предлагает заключение долгосрочных отношений при поставках импортных электронных компонентов на взаимовыгодных условиях!

Наши преимущества:

- Поставка оригинальных импортных электронных компонентов напрямую с производств Америки, Европы и Азии, а так же с крупнейших складов мира;
- Широкая линейка поставок активных и пассивных импортных электронных компонентов (более 30 млн. наименований);
- Поставка сложных, дефицитных, либо снятых с производства позиций;
- Оперативные сроки поставки под заказ (от 5 рабочих дней);
- Экспресс доставка в любую точку России;
- Помощь Конструкторского Отдела и консультации квалифицированных инженеров;
- Техническая поддержка проекта, помощь в подборе аналогов, поставка прототипов;
- Поставка электронных компонентов под контролем ВП;
- Система менеджмента качества сертифицирована по Международному стандарту ISO 9001;
- При необходимости вся продукция военного и аэрокосмического назначения проходит испытания и сертификацию в лаборатории (по согласованию с заказчиком);
- Поставка специализированных компонентов военного и аэрокосмического уровня качества (Xilinx, Altera, Analog Devices, Intersil, Interpoint, Microsemi, Actel, Aeroflex, Peregrine, VPT, Syfer, Eurofarad, Texas Instruments, MS Kennedy, Miteq, Cobham, E2V, MA-COM, Hittite, Mini-Circuits, General Dynamics и др.);

Компания «Океан Электроники» является официальным дистрибьютором и эксклюзивным представителем в России одного из крупнейших производителей разъемов военного и аэрокосмического назначения «JONHON», а так же официальным дистрибьютором и эксклюзивным представителем в России производителя высокотехнологичных и надежных решений для передачи СВЧ сигналов «FORSTAR».



## JONHON

«JONHON» (основан в 1970 г.)

Разъемы специального, военного и аэрокосмического назначения:

(Применяются в военной, авиационной, аэрокосмической, морской, железнодорожной, горно- и нефтедобывающей отраслях промышленности)

«FORSTAR» (основан в 1998 г.)

ВЧ соединители, коаксиальные кабели, кабельные сборки и микроволновые компоненты:

(Применяются в телекоммуникациях гражданского и специального назначения, в средствах связи, РЛС, а так же военной, авиационной и аэрокосмической отраслях промышленности).



Телефон: 8 (812) 309-75-97 (многоканальный)

Факс: 8 (812) 320-03-32

Электронная почта: [ocean@oceanchips.ru](mailto:ocean@oceanchips.ru)

Web: <http://oceanchips.ru/>

Адрес: 198099, г. Санкт-Петербург, ул. Калинина, д. 2, корп. 4, лит. А