

MAXM17515 Evaluation Kit

Evaluates: MAXM17515, 5A Integrated Power Module

General Description

The MAXM17515 evaluation kit (EV kit) is a fully assembled and tested PCB that demonstrates the typical 5A application circuit of the MAXM17515. The MAXM17515 is a fixed-frequency, integrated inductor, step-down power module for low-voltage, low-power applications.

The EV kit provides a 1.5V output voltage from a 2.4V to 5.5V input range and delivers up to 5A output current while achieving greater than 91.2% efficiency. The EV kit operates at a 1MHz switching frequency and has superior line and load-transient response. The EV kit also allows the evaluation of other adjustable output voltages from 0.75V to 3.6V by changing resistors R1 and R2.

[Ordering Information](#) appears at end of data sheet.

Features

- High-Integration Solution/Integrated Shielded Inductor
- 2.4V to 5.5V Input Range
- Configured for 1.5V Output Voltage
- Adjustable Output-Voltage Range (0.75V to 3.6V)
- 5A Output Current
- 91.2% Efficiency ($V_{IN} = 3.3V$, $V_{OUT} = 1.5V$ at 1.5A)
- 1MHz Switching Frequency
- Enable Input
- Power-Good Output Indicator (POK)
- Low-Profile, Surface-Mount Components
- Proven PCB Layout
- Fully Assembled and Tested

Quick Start

Recommended Equipment

- MAXM17515 EV kit
- 2.4V to 5.5V DC power supply (V_{IN})
- 5V DC power supply (V_{CC})
- Dummy load capable of sinking 5A
- Digital multimeter (DMM)
- 100MHz dual-trace oscilloscope

Procedure

The EV kit is fully assembled and tested. Follow the steps below to verify board operation. **Caution: Do not turn on the power supply until all connections are completed.**

- 1) Ensure that the circuit is connected correctly to the supplies and dummy load prior to applying any power.
- 2) Verify that a shunt is installed across jumper JU1.
- 3) Enable the power supply ($V_{IN} = 5V$).
- 4) Observe the 1.5V output with the DMM and/or oscilloscope. Look at the EP2 switching node while varying the load current.

Detailed Description of Hardware

Input Supply Voltage

The EV kit can operate from a minimum 4.5V single DC power supply at the V_{IN} PCB pad with a shunt installed across JU1. The EV kit is also configured to power a lower input voltage at the V_{IN} PCB pad, which requires an additional 5V power supply at V_{CC} PCB pad, a capacitor, (C4) to be installed, and a connecting trace between V_{IN} and V_{CC} (next to R3's footprint) to be cut. [Table 1](#) lists all operating configurations of the EV kit at different input voltage sources.

The electrolytic capacitor (C1) is required only when the V_{IN} power supply is situated far from the MAXM17515 circuit. On the bottom layer, additional footprints of optional components are included to ease board modification for different input/output configurations.

Enable Input

The EV kit features a 2-pin jumper (JU1) that selects the enable/disable control input. The shunt is installed across JU1 to enable the device and vice versa.

Switching Frequency (FREQ)

The EV kit features a PWM-mode switching frequency. The switching frequency is fixed at 1MHz.

Programming the Output Voltage

The EV kit includes a default output programmed at 1.5V and also produces an adjustable 0.75V to 3.6V output voltage by connecting FB to a resistive divider. To obtain an output voltage other than the default programmed output, simply modify the R1 and R2 resistors with values according to the following equation:

$$V_{OUT} = V_{FB} \left(1 + \frac{R1}{R2} \right)$$

where $V_{FB} = 0.75V$. Output capacitance selection changes are required for either an output voltage greater than 2V or the capacitor temperature rises above 105°C. Refer to the MAXM17515 IC data sheet for output capacitance selection.

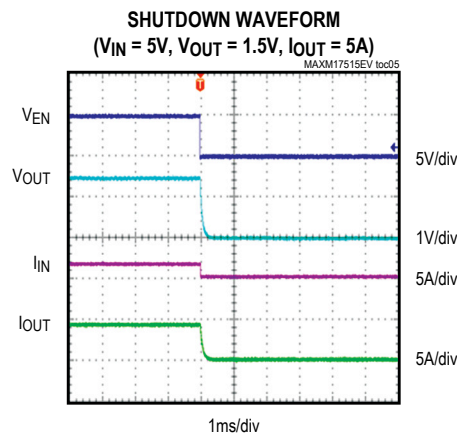
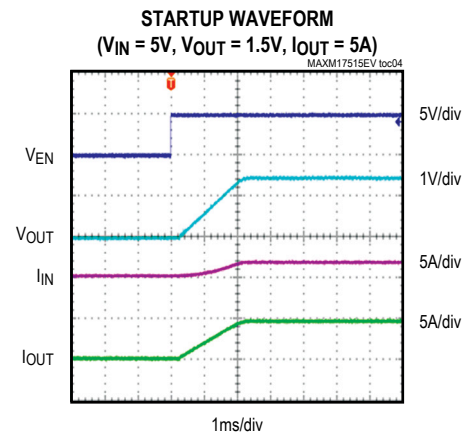
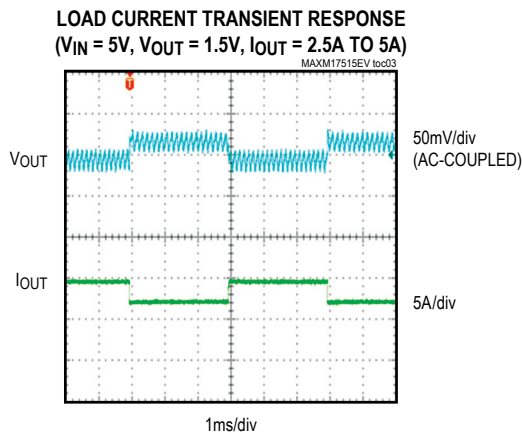
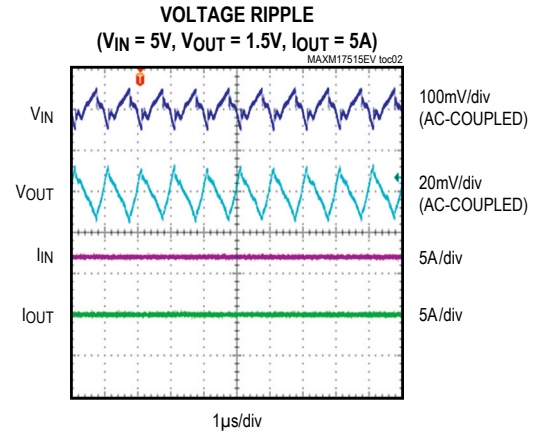
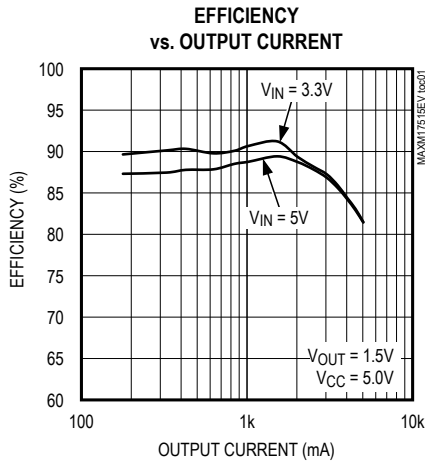
Table 1. Jumper JU1 Functions

SHUNT (JU1) POSITION	V_{IN}/V_{CC} RANGE	REGULATOR OUTPUT
Installed	$V_{IN} = 4.5V$ to 5.5V $V_{CC} = V_{IN}$	Enabled
Installed	$V_{IN} = 2.4V$ to 5.5V Require an additional $V_{CC} = 4.5V$ to 5.5V	Enabled
Not installed*	$V_{IN} = 2.4V$ to 5.5V $V_{CC} = V_{IN}$	Disabled

*The thin trace connecting V_{IN} and V_{CC} (next to R3's footprint) must be cut before applying the additional power supply to the V_{CC} PCB pad.

Typical Operating Characteristics

($V_{CC} = 5V$, $V_{IN} = 3.3V$ to $5V$, $V_{OUT} = 1.5V$, $I_{OUT} = 0-5A$, $T_A = +25^\circ C$, unless otherwise noted.)



Component Suppliers

SUPPLIER	WEBSITE
Keystone Electronics Corp.	www.keyelco.com
Lite-On, Inc.	www.liteon.com
Murata Americas	www.murata.com
Panasonic Corp.	www.panasonic.com
TDK Corp.	www.component.tdk.com

Note: Indicate that you are using the MAXM17515 when contacting these component suppliers.

Component List and Schematic

Refer to the following files attached to this data sheet for component information and schematic:

- MAXM17515_EV_BOM.xls
- MAXM17515_Schematic.pdf

MAXM17515 Evaluation Kit

Evaluates: MAXM17515,
5A Integrated Power
Module

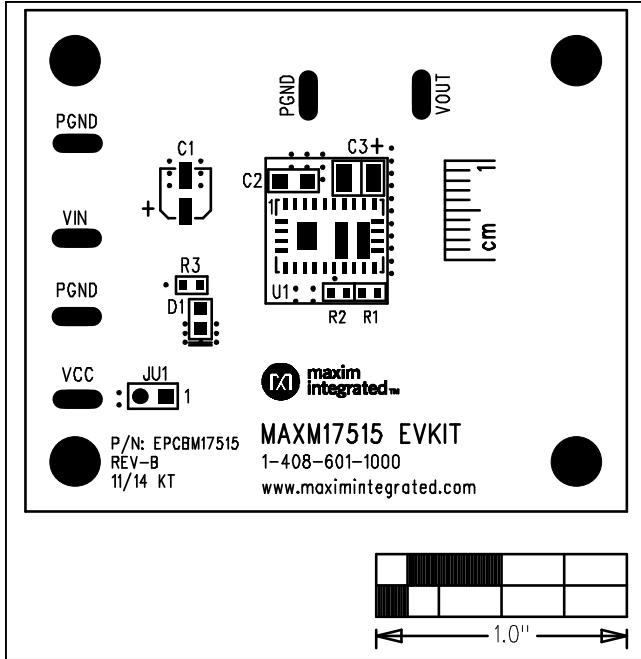


Figure 1. MAXM17515 EV Kit Component Placement Guide—Component Side

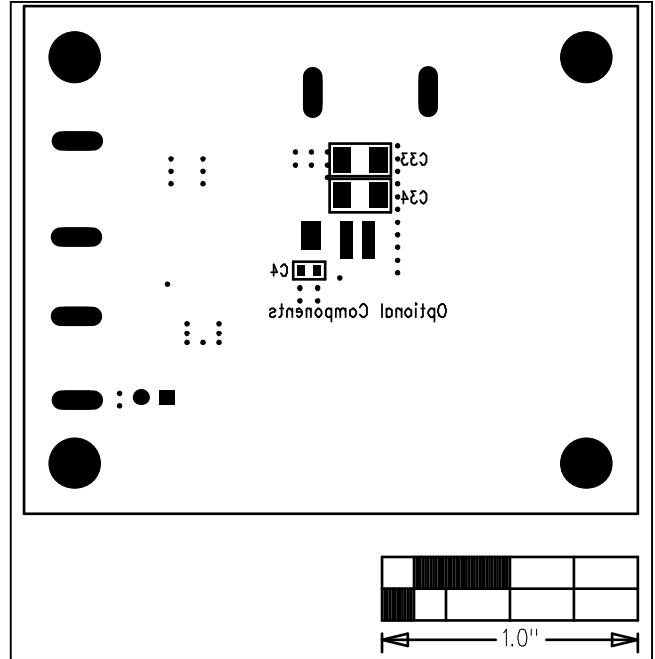


Figure 2. MAXM17515 EV Kit Component Placement Guide—Solder Side

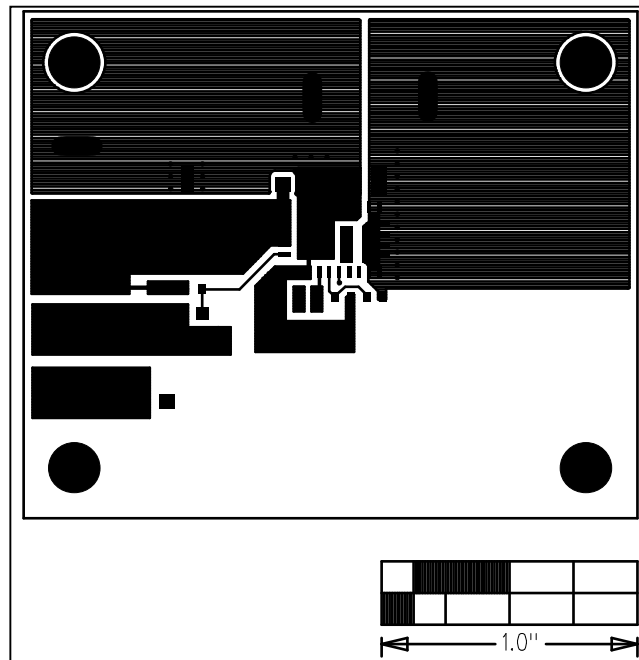


Figure 3. MAXM17515 EV Kit PCB Layout—Component Side

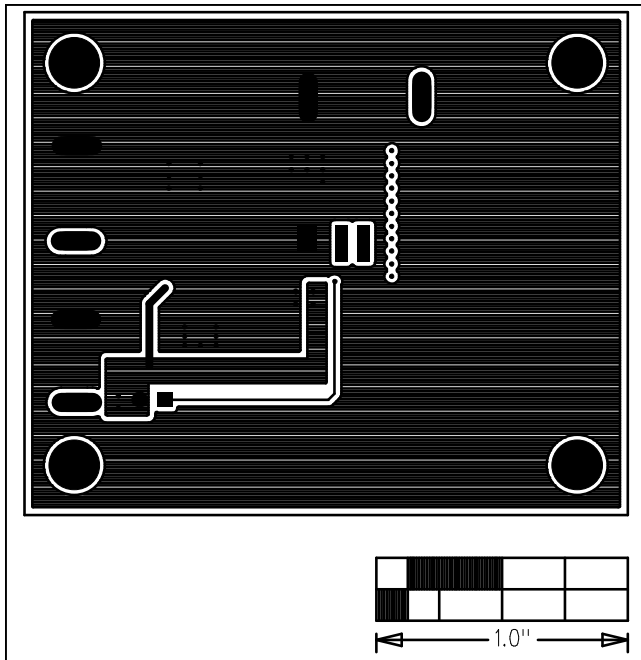


Figure 4. MAXM17515 EV Kit PCB Layout—PGND Layer 2

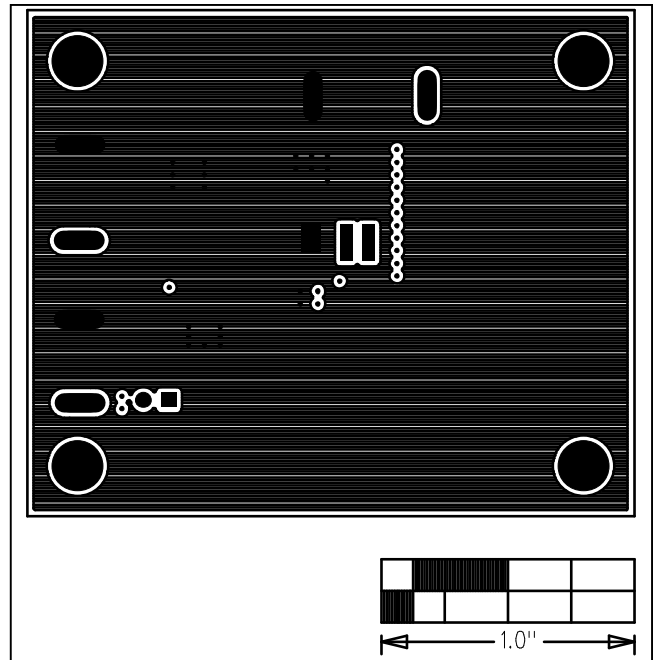


Figure 5. MAXM17515 EV Kit PCB Layout—PGND Layer 3

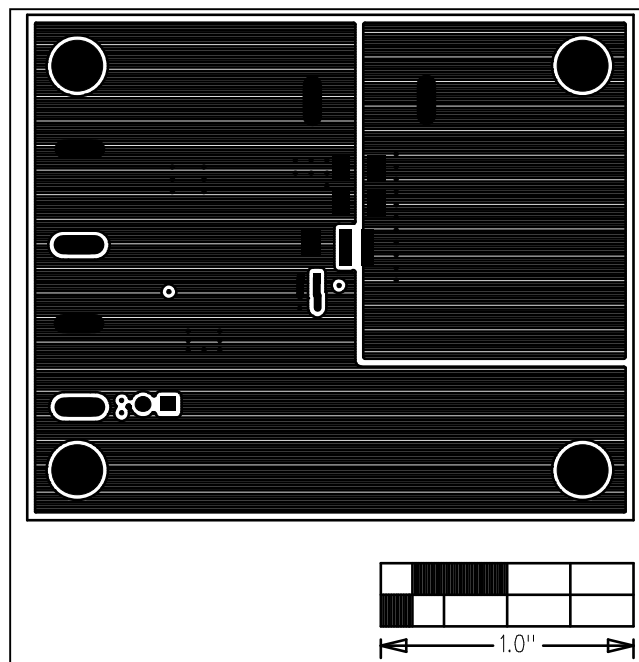


Figure 6. MAXM17515 EV Kit PCB Layout—Solder Side

MAXM17515 Evaluation Kit

Evaluates: MAXM17515,
5A Integrated Power
Module

Ordering Information

PART	TYPE
MAXM17515EVKIT#	EV Kit

#Denotes RoHS compliant.

Revision History

REVISION NUMBER	REVISION DATE	DESCRIPTION	PAGES CHANGED
0	4/15	Initial release	—

For pricing, delivery, and ordering information, please contact Maxim Direct at 1-888-629-4642, or visit Maxim Integrated's website at www.maximintegrated.com.

Maxim Integrated cannot assume responsibility for use of any circuitry other than circuitry entirely embodied in a Maxim Integrated product. No circuit patent licenses are implied. Maxim Integrated reserves the right to change the circuitry and specifications without notice at any time.

Компания «Океан Электроники» предлагает заключение долгосрочных отношений при поставках импортных электронных компонентов на взаимовыгодных условиях!

Наши преимущества:

- Поставка оригинальных импортных электронных компонентов напрямую с производств Америки, Европы и Азии, а так же с крупнейших складов мира;
- Широкая линейка поставок активных и пассивных импортных электронных компонентов (более 30 млн. наименований);
- Поставка сложных, дефицитных, либо снятых с производства позиций;
- Оперативные сроки поставки под заказ (от 5 рабочих дней);
- Экспресс доставка в любую точку России;
- Помощь Конструкторского Отдела и консультации квалифицированных инженеров;
- Техническая поддержка проекта, помощь в подборе аналогов, поставка прототипов;
- Поставка электронных компонентов под контролем ВП;
- Система менеджмента качества сертифицирована по Международному стандарту ISO 9001;
- При необходимости вся продукция военного и аэрокосмического назначения проходит испытания и сертификацию в лаборатории (по согласованию с заказчиком);
- Поставка специализированных компонентов военного и аэрокосмического уровня качества (Xilinx, Altera, Analog Devices, Intersil, Interpoint, Microsemi, Actel, Aeroflex, Peregrine, VPT, Syfer, Eurofarad, Texas Instruments, MS Kennedy, Miteq, Cobham, E2V, MA-COM, Hittite, Mini-Circuits, General Dynamics и др.);

Компания «Океан Электроники» является официальным дистрибьютором и эксклюзивным представителем в России одного из крупнейших производителей разъемов военного и аэрокосмического назначения «JONHON», а так же официальным дистрибьютором и эксклюзивным представителем в России производителя высокотехнологичных и надежных решений для передачи СВЧ сигналов «FORSTAR».



JONHON

«JONHON» (основан в 1970 г.)

Разъемы специального, военного и аэрокосмического назначения:

(Применяются в военной, авиационной, аэрокосмической, морской, железнодорожной, горно- и нефтедобывающей отраслях промышленности)

«FORSTAR» (основан в 1998 г.)

ВЧ соединители, коаксиальные кабели, кабельные сборки и микроволновые компоненты:

(Применяются в телекоммуникациях гражданского и специального назначения, в средствах связи, РЛС, а так же военной, авиационной и аэрокосмической отраслях промышленности).



Телефон: 8 (812) 309-75-97 (многоканальный)

Факс: 8 (812) 320-03-32

Электронная почта: ocean@oceanchips.ru

Web: <http://oceanchips.ru/>

Адрес: 198099, г. Санкт-Петербург, ул. Калинина, д. 2, корп. 4, лит. А