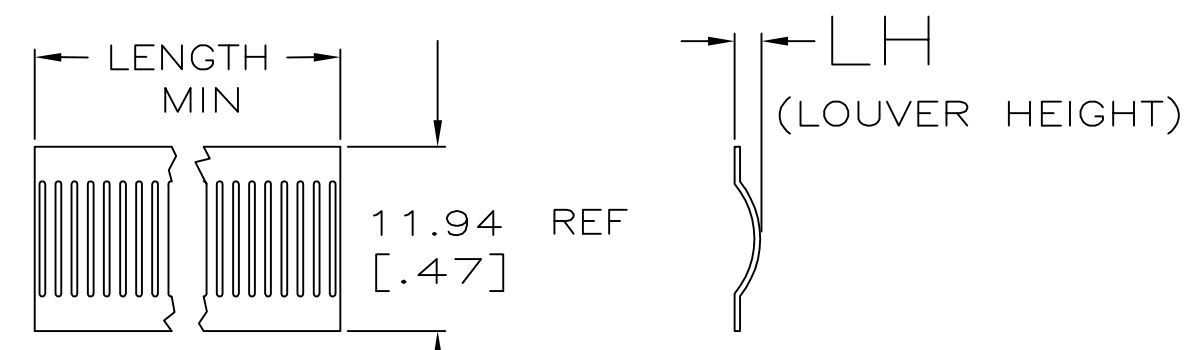


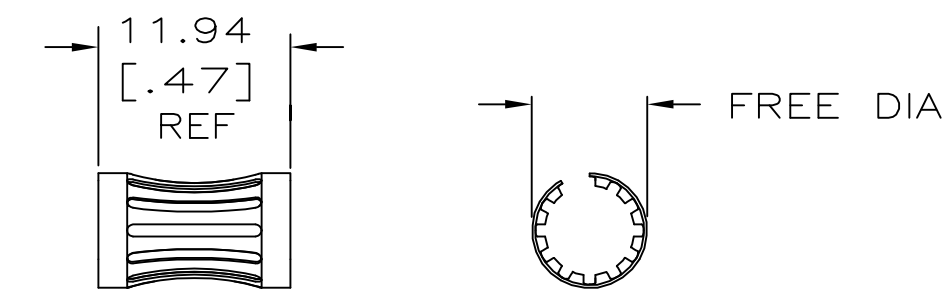
THIS DRAWING IS UNPUBLISHED. RELEASED FOR PUBLICATION
 © COPYRIGHT - By - ALL RIGHTS RESERVED.

| REVISIONS | | | | | |
|-----------|-----|---------------------------|-----------|-----|------|
| P | LTR | DESCRIPTION | DATE | DWN | APVD |
| J | | REVISED PER ECO-15-011609 | 05NOV2015 | NK | MZ |
| K | | REVISED PER ECO-17-013721 | 15NOV2017 | RS | MZ |

| STYLE | FREE DIA | LH | LENGTH | MAT'L (NOTE) | MATING PIN Ø REF | PLATING NOTE NO. | NUM LOUV | MAT'L THK | REF | PART NO. | |
|---------------|----------|--------|---------|--------------|------------------|------------------|----------|-------------|-------|------------|------------------------|
| A | [.34] | [.043] | -- | 12 | 6.35 [.250] | UNPL | 18 | 0.15 [.006] | 03142 | 5-192038-0 | OBSOLETE ¹⁶ |
| A | [.34] | [.030] | -- | 12 | 6.35 [.250] | 3-2 | 18 | 0.15 [.006] | 03028 | 4-192038-9 | |
| A | [.34] | [.030] | -- | 12 | 6.35 [.250] | 1-2 | 18 | 0.15 [.006] | 03086 | 4-192038-8 | |
| A | [.34] | [.030] | -- | 12 | 6.35 [.250] | UNPL | 18 | 0.15 [.006] | 03074 | 4-192038-7 | OBSOLETE ¹⁶ |
| A | -- | -- | -- | 12 | 6.30 [.248] | UNPL | 19 | 0.30 [.012] | -- | 4-192038-6 | ¹⁵ |
| A | -- | -- | -- | 12 | 6.30 [.248] | UNPL | 19 | 0.28 [.011] | -- | 4-192038-5 | ¹⁵ |
| A | [.35] | [.034] | -- | 12 | 6.30 [.248] | 3-2 | 19 | 0.25 [.010] | 03025 | 4-192038-4 | ¹⁶ |
| A | [.35] | [.034] | -- | 12 | 6.30 [.248] | 1-2 | 19 | 0.25 [.010] | 03147 | 4-192038-3 | OBSOLETE |
| A | [.35] | [.034] | -- | 12 | 6.30 [.248] | UNPL | 19 | 0.25 [.010] | 03111 | 4-192038-2 | OBSOLETE |
| A | [.32] | [.038] | -- | 12 | 6.00 [.236] | 4-2 | 17 | 0.20 [.008] | 03137 | 4-192038-1 | OBSOLETE |
| A | [.32] | [.038] | -- | 12 | 6.00 [.236] | 3-2 | 17 | 0.20 [.008] | 03023 | 4-192038-0 | |
| A | [.32] | [.038] | -- | 12 | 6.00 [.236] | 1-2 | 17 | 0.20 [.008] | 03065 | 3-192038-9 | ¹⁶ |
| A | [.32] | [.034] | -- | 12 | 6.00 [.236] | UNPL | 17 | 0.20 [.008] | 03061 | 3-192038-8 | OBSOLETE |
| A | [.33] | [.034] | -- | 12 | 6.00 [.236] | 3-2 | 17 | 0.15 [.006] | 03022 | 3-192038-7 | OBSOLETE |
| A | [.33] | [.034] | -- | 12 | 6.00 [.236] | 1-2 | 17 | 0.15 [.006] | 03113 | 3-192038-6 | ¹⁶ |
| A | [.33] | [.034] | -- | 12 | 6.00 [.236] | UNPL | 17 | 0.15 [.006] | 03021 | 3-192038-5 | OBSOLETE |
| NOT AVAILABLE | | | | | | | | | | 3-192038-4 | ¹⁵ |
| A | [.35] | [.020] | -- | 13 | 6.00 [.236] | -- | 17 | 0.12 [.005] | 03085 | 3-192038-3 | ¹⁶ |
| NOT AVAILABLE | | | | | | | | | | 3-192038-2 | ¹⁶ |
| A | [.26] | [.034] | -- | 12 | 5.00 [.197] | 3-2 | 15 | 0.20 [.008] | 03019 | 3-192038-1 | OBSOLETE |
| A | [.26] | [.034] | -- | 12 | 5.00 [.197] | 1-2 | 15 | 0.20 [.008] | 03131 | 3-192038-0 | OBSOLETE |
| A | [.26] | [.034] | -- | 12 | 5.00 [.197] | UNPL | 15 | 0.20 [.008] | 03130 | 2-192038-9 | OBSOLETE |
| A | [.26] | [.031] | -- | 12 | 5.00 [.197] | 3-2 | 15 | 0.15 [.006] | 03018 | 2-192038-8 | OBSOLETE |
| A | [.26] | [.031] | -- | 12 | 5.00 [.197] | 1-2 | 15 | 0.15 [.006] | 03064 | 2-192038-7 | ¹⁶ |
| A | [.26] | [.031] | -- | 12 | 5.00 [.197] | 5 | 15 | 0.15 [.006] | 03103 | 2-192038-6 | OBSOLETE |
| A | [.26] | [.031] | -- | 12 | 5.00 [.197] | UNPL | 15 | 0.15 [.006] | 03060 | 2-192038-5 | OBSOLETE |
| A | [.23] | [.034] | -- | 12 | 4.00 [.157] | 3-2 | 14 | 0.20 [.008] | 03013 | 2-192038-4 | ¹⁶ |
| A | [.23] | [.030] | -- | 12 | 4.00 [.157] | 3-2 | 14 | 0.15 [.006] | 03012 | 2-192038-3 | OBSOLETE |
| A | [.21] | [.030] | -- | 12 | 3.50 [.138] | 3-2 | 13 | 0.15 [.006] | 03011 | 2-192038-2 | OBSOLETE |
| A | [.21] | [.034] | -- | 12 | 3.17 [.125] | 3-2 | 12 | 0.20 [.008] | 03010 | 2-192038-1 | OBSOLETE |
| A | [.21] | [.034] | -- | 12 | 3.17 [.125] | 1-2 | 12 | 0.10 [.004] | 03132 | 2-192038-0 | OBSOLETE |
| A | [.21] | [.034] | -- | 12 | 3.17 [.125] | 5 | 12 | 0.10 [.004] | 03133 | 1-192038-9 | ¹⁵ |
| A | [.21] | [.034] | -- | 12 | 3.17 [.125] | UNPL | 12 | 0.10 [.004] | 03134 | 1-192038-8 | ¹⁶ |
| A | [.20] | [.030] | -- | 12 | 3.00 [.118] | 3-2 | 11 | 0.15 [.006] | 03009 | 1-192038-7 | OBSOLETE |
| A | [.19] | [.030] | -- | 12 | 3.00 [.118] | 3-2 | 10 | 0.15 [.006] | 03008 | 1-192038-6 | OBSOLETE |
| A | [.18] | [.030] | -- | 12 | 2.67 [.105] | 3-2 | 9 | 0.15 [.006] | 03007 | 1-192038-5 | OBSOLETE |
| A | [.18] | [.030] | -- | 12 | 2.31 [.091] | 3-2 | 8 | 0.15 [.006] | 03006 | 1-192038-4 | ¹⁶ |
| A | [.15] | [.030] | -- | 12 | 2.03 [.080] | 3-2 | 7 | 0.15 [.006] | 03005 | 1-192038-3 | OBSOLETE |
| A | [.15] | [.030] | -- | 12 | 1.70 [.067] | 3-2 | 6 | 0.15 [.006] | 03004 | 1-192038-2 | OBSOLETE |
| C | -- | [.038] | NOTE 14 | 12 | -- | 3-2 | -- | 0.20 [.008] | 03000 | 1-192038-1 | OBSOLETE |
| C | -- | [.038] | NOTE 14 | 12 | -- | 1-2 | -- | 0.20 [.008] | 03095 | 1-192038-0 | OBSOLETE |
| C | -- | [.038] | NOTE 14 | 12 | -- | UNPL | -- | 0.20 [.008] | 03077 | 192038-9 | OBSOLETE |
| C | -- | [.034] | NOTE 14 | 12 | -- | 4-2 | -- | 0.15 [.006] | 03123 | 192038-8 | OBSOLETE |
| C | -- | [.034] | NOTE 14 | 12 | -- | 3-2 | -- | 0.15 [.006] | 03053 | 192038-7 | OBSOLETE |
| C | -- | [.034] | NOTE 14 | 12 | -- | 1-2 | -- | 0.15 [.006] | 03104 | 192038-6 | OBSOLETE |
| C | -- | [.034] | NOTE 14 | 12 | -- | UNPL | -- | 0.15 [.006] | 03001 | 192038-5 | ¹⁶ |
| NOT AVAILABLE | | | | | | | | | | 192038-4 | OBSOLETE |
| NOT AVAILABLE | | | | | | | | | | 192038-3 | OBSOLETE |
| NOT AVAILABLE | | | | | | | | | | 192038-2 | OBSOLETE |
| NOT AVAILABLE | | | | | | | | | | 192038-1 | OBSOLETE |



STYLE C
(STRIP)



STYLE A
(FEMALE)

- 1 FINISH-SILVER PLATE 200µIN MIN THICK.
- 2 FINISH-NICKEL PLATE 40µIN MIN THICK.
- 3 FINISH-GOLD PLATE 10µIN MIN THICK.
- 4 FINISH-GOLD PLATE 50µIN MIN THICK.
- 5 FINISH-NICKEL PLATE 80µIN MIN THICK.
- 6 FINISH-TIN PLATE 300µIN MIN THICK.
- 7 NOT USED.
- 8 NOT USED.
- 9 NOT USED.
- 10 NOT USED.
- 11 PLATING NOTE ARE TO BE INTERPRETED AS FOLLOWS, 6-8 AS 6 OVER 8.
- 12 MATERIAL-CDA172, BeCu.
- 13 MATERIAL-STAINLESS STEEL.
- 14 PRODUCT IS SOLD BY THE FOOT.
- ¹⁵ OBSOLETE PART NUMBER.
- ¹⁶ OBSOLETE PARTS: OBSOLETE CIS STREAMLINING PER D.RENAUD/D.SINISI


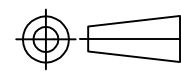
| | | | | |
|--|--|------------------------|----------------------------|---------------------|
| THIS DRAWING IS A CONTROLLED DOCUMENT. | | DWN RA JAYNE 08-13-91 | STE TE Connectivity | |
| DIMENSIONS: MM [INCHES] | | CHK RA JAYNE 08-13-91 | | |
| TOLERANCES UNLESS OTHERWISE SPECIFIED: | | APVD RA JAYNE 08-13-91 | NAME CONTACT BAND,FEMALE | |
| 0 PLC ± - | | PRODUCT SPEC | SIZE A2 | |
| 1 PLC ± - | | APPLICATION SPEC | CAGE CODE 00779 | DRAWING NO C=192038 |
| 2 PLC ± 0.5 [.02] | | WEIGHT - | RESTRICTED TO - | |
| 3 PLC ± 0.25 [.010] | | SCALE NTS | SHEET 1 OF 2 | |
| 4 PLC ± - | | CUSTOMER DRAWING | REV K | |
| ANGLES ± - | | | | |
| FINISH SEE TABLE | | | | |

THIS DRAWING IS UNPUBLISHED. RELEASED FOR PUBLICATION
 © COPYRIGHT - By - ALL RIGHTS RESERVED.

| REVISIONS | | | | |
|-----------|-----|-------------|------|------|
| P | LTR | DESCRIPTION | DATE | APVD |
| - | - | SEE SHEET 1 | - | - |

| | | | | | | | | | | | | | |
|---|--------|--------|----|----|-------|--------|------|----|------|--------|-------|------------|-------------|
| A | [1.00] | [.034] | -- | 12 | 17.98 | [.708] | 1-2 | 53 | 0.20 | [.008] | 03114 | 9-192038-9 | |
| A | [.90] | [.038] | -- | 12 | 16.00 | [.630] | 1-2 | 46 | 0.20 | [.008] | 03107 | 9-192038-8 | 16 |
| A | [.90] | [.038] | -- | 12 | 16.00 | [.630] | UNPL | 46 | 0.20 | [.008] | 03146 | 9-192038-7 | |
| A | [.80] | [.034] | -- | 12 | 14.00 | [.551] | 3-2 | 42 | 0.20 | [.008] | -- | 9-192038-6 | OBSOLETE |
| A | [.62] | [.034] | -- | 12 | 12.70 | [.500] | 1-2 | 38 | 0.20 | [.008] | 03097 | 9-192038-5 | OBSOLETE |
| A | [.62] | [.034] | -- | 12 | 12.70 | [.500] | 6 | 38 | 0.20 | [.008] | 03090 | 9-192038-4 | |
| A | [.62] | [.034] | -- | 12 | 12.70 | [.500] | UNPL | 38 | 0.20 | [.008] | 03099 | 9-192038-3 | OBSOLETE 16 |
| A | -- | -- | -- | 12 | 12.70 | [.500] | 3-2 | 37 | 0.20 | [.008] | 03047 | 9-192038-2 | 19 |
| A | -- | -- | -- | 12 | 12.70 | [.500] | 1-2 | 37 | 0.20 | [.008] | 03068 | 9-192038-1 | 19 |
| A | -- | -- | -- | 12 | 12.70 | [.500] | UNPL | -- | 0.20 | [.008] | 03059 | 9-192038-0 | 19 |
| A | [.62] | [.030] | -- | 12 | 12.70 | [.500] | 1-2 | 36 | 0.15 | [.006] | 03117 | 8-192038-9 | 16 |
| A | [.62] | [.020] | -- | 13 | 12.70 | [.500] | UNPL | 37 | 0.12 | [.005] | 03092 | 8-192038-8 | OBSOLETE |
| A | [.62] | [.034] | -- | 12 | 11.99 | [.472] | 3-2 | 36 | 0.20 | [.008] | -- | 8-192038-7 | |
| A | [.62] | [.034] | -- | 12 | 11.99 | [.472] | 1-2 | 36 | 0.20 | [.008] | 03108 | 8-192038-6 | |
| A | [.62] | [.034] | -- | 12 | 11.99 | [.472] | UNPL | 36 | 0.20 | [.008] | 03135 | 8-192038-5 | |
| A | [.60] | [.034] | -- | 12 | 11.10 | [.437] | 3-2 | 34 | 0.20 | [.008] | 03045 | 8-192038-4 | 16 |
| A | [.60] | [.034] | -- | 12 | 11.10 | [.437] | 1-2 | 34 | 0.20 | [.008] | 03106 | 8-192038-3 | OBSOLETE |
| A | [.60] | [.034] | -- | 12 | 11.10 | [.437] | UNPL | 34 | 0.20 | [.008] | 03081 | 8-192038-2 | |
| A | [.58] | [.034] | -- | 12 | 11.10 | [.437] | 1-2 | 32 | 0.20 | [.008] | 03102 | 8-192038-1 | 19 |
| A | [.58] | [.034] | -- | 12 | 11.10 | [.437] | UNPL | 32 | 0.20 | [.008] | 03109 | 8-192038-0 | 16 |
| A | [.58] | [.020] | -- | 13 | 11.10 | [.437] | UNPL | 32 | 0.12 | [.005] | 03118 | 7-192038-9 | OBSOLETE |
| A | [.60] | [.034] | -- | 12 | 10.79 | [.425] | 4-2 | 34 | 0.20 | [.008] | 03105 | 7-192038-8 | |
| A | [.55] | [.038] | -- | 12 | 10.00 | [.394] | 1-2 | 30 | 0.20 | [.008] | 03069 | 7-192038-7 | |
| A | [.55] | [.038] | -- | 12 | 10.00 | [.394] | UNPL | 30 | 0.20 | [.008] | 03072 | 7-192038-6 | OBSOLETE 16 |
| A | -- | -- | -- | 12 | 10.00 | [.394] | 3-2 | 30 | 0.15 | [.006] | 03044 | 7-192038-5 | 19 |
| A | [.50] | [.034] | -- | 12 | 9.52 | [.375] | 3-2 | 27 | 0.20 | [.008] | 03093 | 7-192038-4 | OBSOLETE |
| A | [.50] | [.034] | -- | 12 | 9.52 | [.375] | 1-2 | 27 | 0.20 | [.008] | 03089 | 7-192038-3 | 19 |
| A | [.50] | [.034] | -- | 12 | 8.89 | [.350] | UNPL | 28 | 0.20 | [.008] | 03112 | 7-192038-2 | OBSOLETE 16 |
| A | -- | -- | -- | 12 | 8.00 | [.315] | 3-2 | -- | 0.12 | [.005] | 03043 | 7-192038-1 | 19 |
| A | -- | -- | -- | 12 | 8.00 | [.315] | 3-2 | -- | 0.20 | [.008] | 03040 | 7-192038-0 | 19 |
| A | -- | -- | -- | 12 | 8.00 | [.315] | 1-2 | -- | 0.20 | [.008] | 03098 | 6-192038-9 | 19 |
| A | -- | -- | -- | 12 | 8.00 | [.315] | 1-2 | -- | 0.20 | [.008] | 03070 | 6-192038-8 | 19 |
| A | -- | -- | -- | 12 | 8.00 | [.315] | UNPL | -- | 0.20 | [.008] | 03039 | 6-192038-7 | 19 |
| A | [.42] | [.034] | -- | 12 | 8.00 | [.315] | 3-2 | 22 | 0.20 | [.008] | 03141 | 6-192038-6 | |
| A | [.42] | [.034] | -- | 12 | 8.00 | [.315] | 1-2 | 22 | 0.20 | [.008] | 03101 | 6-192038-5 | |
| A | [.42] | [.034] | -- | 12 | 8.00 | [.315] | UNPL | 22 | 0.20 | [.008] | 03100 | 6-192038-4 | OBSOLETE 16 |
| A | -- | -- | -- | 12 | 6.60 | [.260] | 3-2 | -- | 0.15 | [.006] | 03038 | 6-192038-3 | 19 |
| A | -- | -- | -- | 12 | 6.35 | [.250] | UNPL | -- | 0.15 | [.006] | 03037 | 6-192038-2 | 19 |
| A | [.32] | [.036] | -- | 12 | 7.11 | [.280] | 3-2 | 20 | 0.20 | [.008] | 03033 | 6-192038-1 | |
| A | [.32] | [.036] | -- | 12 | 7.11 | [.280] | 1-2 | 20 | 0.20 | [.008] | 03063 | 6-192038-0 | |
| A | [.32] | [.036] | -- | 12 | 7.11 | [.280] | UNPL | 20 | 0.20 | [.008] | 03076 | 5-192038-9 | 16 |
| A | [.32] | [.020] | -- | 13 | 7.11 | [.280] | UNPL | 20 | 0.20 | [.008] | 03083 | 5-192038-8 | OBSOLETE |
| A | -- | -- | -- | 12 | 6.60 | [.260] | 3-2 | 19 | 0.20 | [.008] | 03032 | 5-192038-7 | 19 |
| A | -- | -- | -- | 12 | 6.35 | [.250] | UNPL | 18 | 0.20 | [.008] | 03031 | 5-192038-6 | 19 |
| A | [.35] | [.034] | -- | 12 | 6.35 | [.250] | UNPL | 19 | 0.20 | [.008] | 03136 | 5-192038-5 | OBSOLETE 16 |
| A | [.31] | [.034] | -- | 12 | 6.35 | [.250] | 3-2 | 18 | 0.20 | [.008] | 03029 | 5-192038-4 | OBSOLETE |
| A | [.31] | [.034] | -- | 12 | 6.35 | [.250] | 1-2 | 18 | 0.20 | [.008] | 03075 | 5-192038-3 | 16 |
| A | [.31] | [.034] | -- | 12 | 6.35 | [.250] | UNPL | 18 | 0.20 | [.008] | 03062 | 5-192038-2 | OBSOLETE |
| A | [.35] | [.043] | -- | 12 | 6.35 | [.250] | 1-2 | 18 | 0.15 | [.006] | 03143 | 5-192038-1 | OBSOLETE |

| STYLE | FREE DIA | LH | LENGTH | MAT'L (NOTE) | MATING PIN Ø REF | PLATING NOTE NO | NUM LOUV | MAT'L THK | REF | PART NUMBER |
|-------|----------|----|--------|--------------|------------------|-----------------|----------|-----------|-----|-------------|
|-------|----------|----|--------|--------------|------------------|-----------------|----------|-----------|-----|-------------|

| | | | | |
|---|--|-----------------------|---|--|
| THIS DRAWING IS A CONTROLLED DOCUMENT. | | DWN RA JAYNE 08-13-91 |  TE Connectivity | |
| DIMENSIONS: MM [INCHES] | | CHK RA JAYNE 08-13-91 | | |
| TOLERANCES UNLESS OTHERWISE SPECIFIED: | | APVD - | NAME CONTACT BAND,FEMALE | |
|  0 PLC ± - 1 PLC ± - 2 PLC ± 0.5 [.02] 3 PLC ± 0.25 [.010] 4 PLC ± - ANGLES ± - | | PRODUCT SPEC - | SIZE CAGE CODE DRAWING NO RESTRICTED TO | |
| MATERIAL SEE TABLE | | APPLICATION SPEC - | A2 00779 C=192038 | |
| FINISH SEE TABLE | | WEIGHT - | SCALE NTS SHEET 2 of 2 REV K | |
| CUSTOMER DRAWING | | | | |

192038

A

Компания «Океан Электроники» предлагает заключение долгосрочных отношений при поставках импортных электронных компонентов на взаимовыгодных условиях!

Наши преимущества:

- Поставка оригинальных импортных электронных компонентов напрямую с производств Америки, Европы и Азии, а так же с крупнейших складов мира;
- Широкая линейка поставок активных и пассивных импортных электронных компонентов (более 30 млн. наименований);
- Поставка сложных, дефицитных, либо снятых с производства позиций;
- Оперативные сроки поставки под заказ (от 5 рабочих дней);
- Экспресс доставка в любую точку России;
- Помощь Конструкторского Отдела и консультации квалифицированных инженеров;
- Техническая поддержка проекта, помощь в подборе аналогов, поставка прототипов;
- Поставка электронных компонентов под контролем ВП;
- Система менеджмента качества сертифицирована по Международному стандарту ISO 9001;
- При необходимости вся продукция военного и аэрокосмического назначения проходит испытания и сертификацию в лаборатории (по согласованию с заказчиком);
- Поставка специализированных компонентов военного и аэрокосмического уровня качества (Xilinx, Altera, Analog Devices, Intersil, Interpoint, Microsemi, Actel, Aeroflex, Peregrine, VPT, Syfer, Eurofarad, Texas Instruments, MS Kennedy, Miteq, Cobham, E2V, MA-COM, Hittite, Mini-Circuits, General Dynamics и др.);

Компания «Океан Электроники» является официальным дистрибьютором и эксклюзивным представителем в России одного из крупнейших производителей разъемов военного и аэрокосмического назначения «JONHON», а так же официальным дистрибьютором и эксклюзивным представителем в России производителя высокотехнологичных и надежных решений для передачи СВЧ сигналов «FORSTAR».



JONHON

«JONHON» (основан в 1970 г.)

Разъемы специального, военного и аэрокосмического назначения:

(Применяются в военной, авиационной, аэрокосмической, морской, железнодорожной, горно- и нефтедобывающей отраслях промышленности)

«FORSTAR» (основан в 1998 г.)

ВЧ соединители, коаксиальные кабели, кабельные сборки и микроволновые компоненты:

(Применяются в телекоммуникациях гражданского и специального назначения, в средствах связи, РЛС, а так же военной, авиационной и аэрокосмической отраслях промышленности).



Телефон: 8 (812) 309-75-97 (многоканальный)

Факс: 8 (812) 320-03-32

Электронная почта: ocean@oceanchips.ru

Web: <http://oceanchips.ru/>

Адрес: 198099, г. Санкт-Петербург, ул. Калинина, д. 2, корп. 4, лит. А