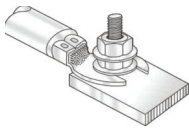


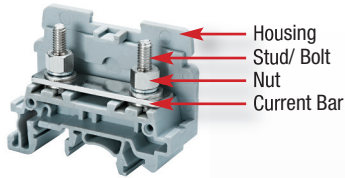
### LUG/ STUD TYPE CONNECTION TECHNOLOGY



- Accepts Ring/ Fork Lug Cable Lugs
- Withstands severe vibration
- Reliable Gas-tight connection
- For very large wire sizes (up to 350 kcmil)
- High Torque values
- Secure connection
- Hinged cover featuring captive nut system guarantees quick and easy ring lug wiring



### MATERIAL SPECIFICATIONS



#### Current Carrying Metal

*Corrosion free material*

- Bolt: zinc chromate passivated steel
- Nut/ Screw: zinc chromate passivated steel
- Current Bar: nickel plated copper alloy/ tin plated copper

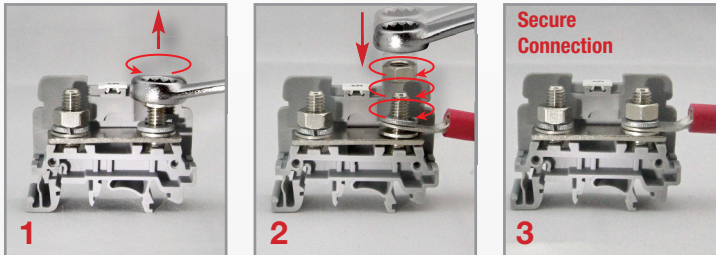
#### Terminal Block Housing

- Polyamide PA66 Housing
- Self-extinguishing
- High mechanical strength

#### Polyamide 66 Specifications

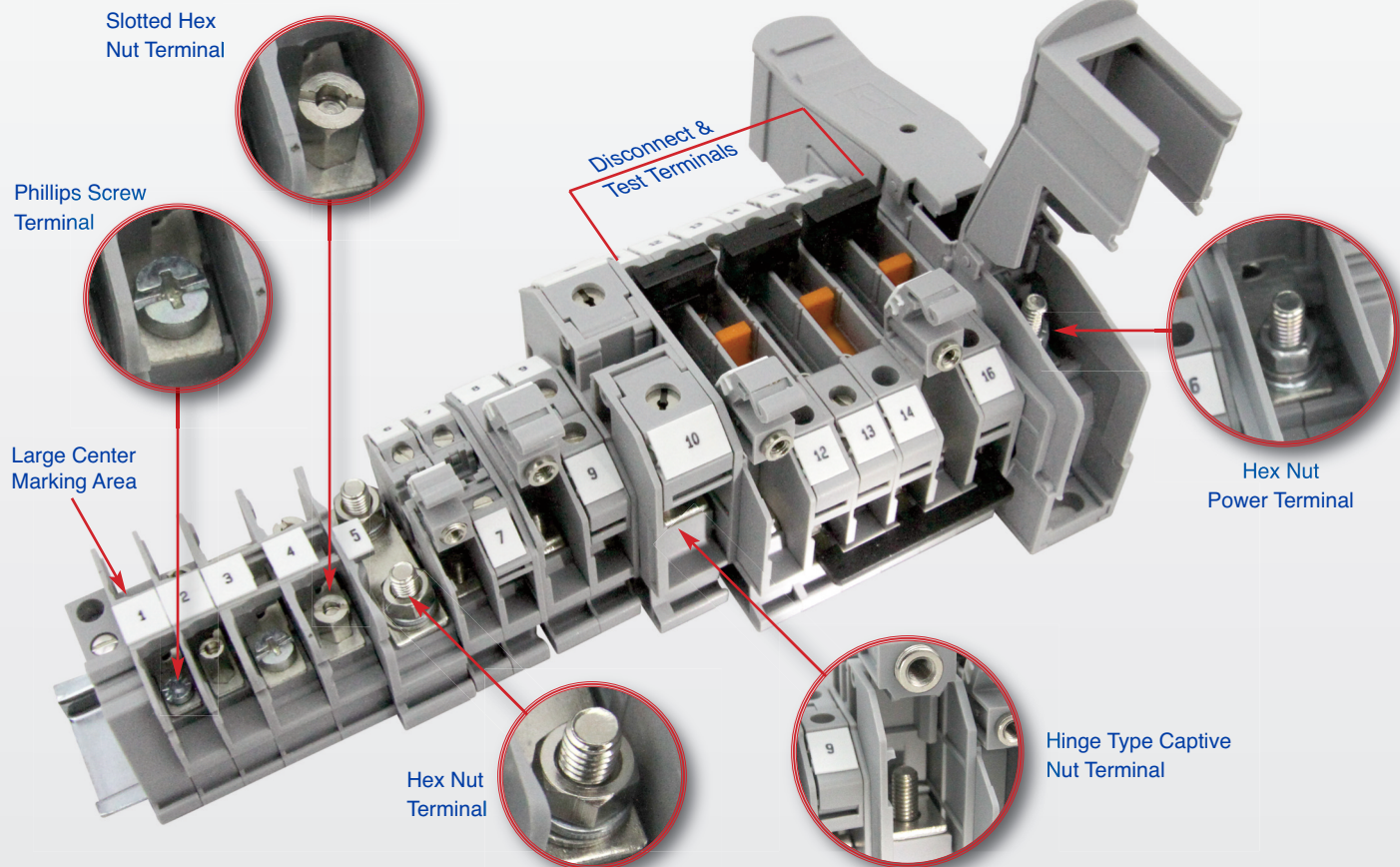
- Upper Temperature Limit: 105°C
- Lower Temperature Limit: -50°C
- Flammability UL94: V2/ V0
- Volume Resistivity:  $10^{12} \Omega \text{ cm}$
- Surface Resistivity:  $10^{10} \Omega$

### INSTALLATION GUIDELINES



- 1 Remove screw/ nut by using wrench/ hex nut driver
- 2 Place cable with ring/ fork cable lug on stud
- 3 Tighten screw/ nut to specified torque by using wrench/hex nut driver

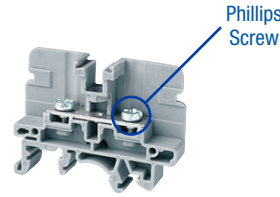
### RING LUG TERMINAL CONNECTION TYPES AND FEATURES



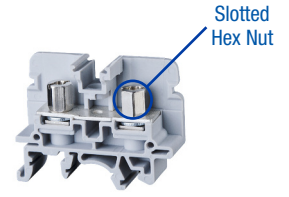
**Ring Lug Barrier Terminal Blocks**

**FEATURES**

- Phillips Screw (CBS Series)
- Slotted Hex Nut (CSB Series)
- 22-4 AWG
- Up to 85A



**CBS Series**  
page 52

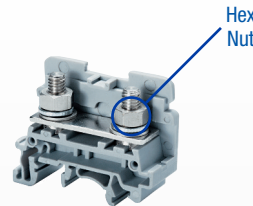


**CSB Series**  
page 53

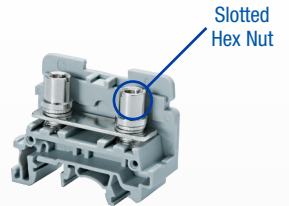
**Ring Lug Stud Terminal Blocks**

**FEATURES**

- Hex Nut (CSTSN Series)
- Slotted Hex Nut (CSTSB Series)
- 22-2 AWG
- Up to 125A



**CSTSN Series**  
page 54



**CSTSB Series**  
page 55

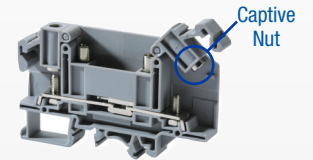
**Ring Lug Hinge Terminal Blocks**

**FEATURES**

- Captive Nut Built-In Hinge
- Feed-Through Terminals
- Disconnect Terminals
- 22-2 AWG
- Up to 115A



**Feed-Through**  
page 56

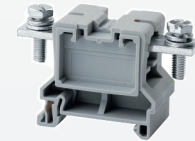
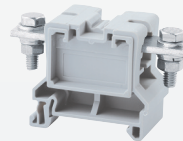


**Disconnect**  
page 57

**Ring Lug Power Terminal Blocks**

**FEATURES**

- Nut/Bolt Connection
- Threaded Current Bar
- 10 AWG - 350 kcmil
- up to 310A

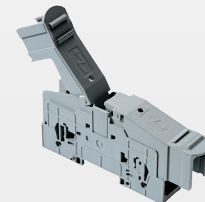
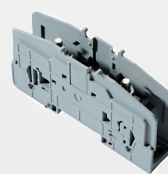


**CBB Series**  
page 58-59

**High Current Power Terminal Blocks**

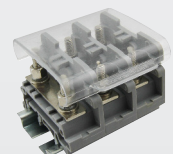
**FEATURES**

- Captive Bolt System
- 8-4/0 AWG
- Up to 230A
- Protective Cover
- Stackable



**PTB Series**  
page 60

**Accessories**



page 61

## HIGHLIGHTS

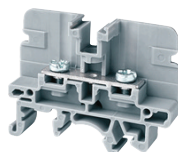
### FEATURES

- Various sizes
  - Wire size up to 4 AWG
  - Current rating up to 85 A
- Suitable for standard fork type / ring lug connectors
- Version with standard Phillips Screw (**CBS Series**)
- Version with slotted nut (**CSB Series**)
- Compact design
- 2, 3, 4 pole fork type and ring lug jumpers

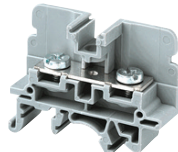
### APPLICATIONS

- Applications with vibration
  - Machinery
  - Transportation
  - Vehicles
- Provides solution when ring / fork lug is needed
- Compact / Space saving Panels

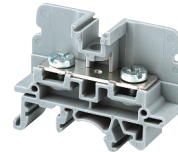
### CBS3U



### CBS4U



### CBS5U



### Dimensions & Weight

|  | 50 A Ring Lug Terminal<br>Phillips Screw Head | 65 A Ring Lug Terminal<br>Phillips Screw Head | 85 A Ring Lug Terminal<br>Phillips Screw Head |
|--|---|---|---|
| Width  | 9 mm  | 13 mm   | 13 mm   |
| Length   | 49 mm   | 49 mm   | 49 mm   |
| Height w DIN Rail<br>35 x 7.5 mm<br>35 x 15 mm | 38 mm<br>45.5 mm                              | 38 mm<br>45.5 mm                              | 38 mm<br>45.5 mm                              |
| Weight per piece                               | 7.4 g   | 12.4 g  | 13.8 g  |

### Technical Data/Ratings

| Approvals                    |              |                       |              |                        |              |                        |
|------------------------------|--------------|-----------------------|--------------|------------------------|--------------|------------------------|
|                              | 22-8 AWG     | 0.5-6 mm <sup>2</sup> | 16-6 AWG     | 1.5-10 mm <sup>2</sup> | 16-4 AWG     | 1.5-16 mm <sup>2</sup> |
| Wire Size (solid / stranded) |              |                       |              |                        |              |                        |
| Voltage Rating               | 600 V        | 1000V AC/DC           | 600 V        | 1000V AC/DC            | 600 V        | 1000V AC/DC            |
| Current Rating               | 50 A         | 41 A                  | 65 A         | 57 A                   | 85 A         | 76 A                   |
| Torque                       | 4.5 lb-in    | 0.5 Nm                | 10 lb-in     | 1.2 Nm                 | 25 lb-in     | 2.0 Nm                 |
| Insulation Material          | Polyamide 66 |                       | Polyamide 66 |                        | Polyamide 66 |                        |

### Installation Instructions

|                       |             |             |             |
|-----------------------|-------------|-------------|-------------|
| Wire Stripping Length | —           | —           | —           |
| Screw / Stud Size     | M3          | M4          | M5          |
| Screwdriver           | Phillips #2 | Phillips #2 | Phillips #2 |

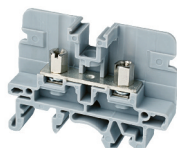
### Terminal Blocks

|                        | Cat. No.     | Std. Pk. | Cat. No.     | Std. Pk. | Cat. No.     | Std. Pk. |
|------------------------|--------------|----------|--------------|----------|--------------|----------|
| <b>Grey (standard)</b> | <b>CBS3U</b> | 50       | <b>CBS4U</b> | 50       | <b>CBS5U</b> | 50       |
| Red R                  | CBS3U/R      | 50       | CBS4U/R      | 50       | CBS5U/R      | 50       |
| Blue BU                | CBS3U/BU     | 50       | CBS4U/BU     | 50       | CBS5U/BU     | 50       |
| Black BL               | CBS3U/BL     | 50       | CBS4U/BL     | 50       | CBS5U/BL     | 50       |
| Orange O               | CBS3U/O      | 50       | CBS4U/O      | 50       | CBS5U/O      | 50       |
| Green G                | CBS3U/G      | 50       | CBS4U/G      | 50       | CBS5U/G      | 50       |
| Yellow Y               | CBS3U/Y      | 50       | CBS4U/Y      | 50       | CBS5U/Y      | 50       |
| White W                | CBS3U/W      | 50       | CBS4U/W      | 50       | CBS5U/W      | 50       |

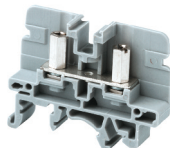
### Accessories

|                            | Cat. No.                | Std. Pk.         | Cat. No.                | Std. Pk.         | Cat. No.                | Std. Pk.         |
|----------------------------|-------------------------|------------------|-------------------------|------------------|-------------------------|------------------|
| End Plate                  | EPCBS3U                 | 50               | EPCBS3U                 | 50               | EPCBS3U                 | 50               |
| DIN Rail                   | 2511120                 | 20               | 2511120                 | 20               | 2511120                 | 20               |
|                            | CA701-15/S              | 20               | CA701-15/S              | 20               | CA701-15/S              | 20               |
|                            | 2511160                 | 10               | 2511160                 | 10               | 2511160                 | 10               |
| End Stop                   | CA802                   | 50               | CA802                   | 50               | CA802                   | 50               |
| Insulated Jumper Fork Type | 2 pole<br>CA514/15-2    | 100              | 2 pole<br>CA514/2-2     | 100              | 2 pole<br>CA514/2-2     | 100              |
|                            | 3 pole<br>CA514/15-3    | 50               | 3 pole<br>CA514/2-3     | 50               | 3 pole<br>CA514/2-3     | 50               |
|                            | 4 pole<br>CA514/15-4    | 50               | 4 pole<br>CA514/2-4     | 50               | 4 pole<br>CA514/2-4     | 50               |
| Insulated Jumper Ring Lug  | 2 pole<br>CA514/17-2    | 100              | 2 pole<br>CA514/4-2     | 100              | 2 pole<br>CA514/4-2     | 100              |
|                            | 3 pole<br>CA514/17-3    | 50               | 3 pole<br>CA514/4-3     | 50               | 3 pole<br>CA514/4-3     | 50               |
|                            | 4 pole<br>CA514/17-4    | 50               | 4 pole<br>CA514/4-4     | 50               | 4 pole<br>CA514/4-4     | 50               |
| Internal Jumper            | 2 pole<br>CA728/2       | 100              | 2 pole<br>CA772/2       | 100              | 2 pole<br>CA772/2       | 100              |
|                            | 3 pole<br>CA728/3       | 100              | 3 pole<br>CA772/3       | 100              | 3 pole<br>CA772/3       | 100              |
|                            | 4 pole<br>CA728/4       | 100              | 4 pole<br>CA772/4       | 100              | 4 pole<br>CA772/4       | 100              |
|                            | 10 pole<br>CA728/10     | 10               | 10 pole<br>CA772/10     | 10               | 10 pole<br>CA772/10     | 10               |
| Protective Cover           | 2 Terminal<br>CSTSPC2   | —                | 2 Terminal<br>CSTSPC2   | 10               | 2 Terminal<br>CSTSPC2   | 10               |
|                            | 3 Terminal<br>CSTSPC2-1 | 10               | 3 Terminal<br>CSTSPC2-1 | 10               | 3 Terminal<br>CSTSPC2-1 | 10               |
|                            | 4 Terminal<br>CSTSPC1-2 | 10               | 4 Terminal<br>CSTSPC1-2 | 10               | 4 Terminal<br>CSTSPC1-2 | 10               |
|                            | 100 mm<br>CSTSPC1-3     | 10               | 100 mm<br>CSTSPC1-3     | 10               | 100 mm<br>CSTSPC1-3     | 10               |
|                            | 200 mm<br>CSTSPC1-3     | 10               | 200 mm<br>CSTSPC1-3     | 10               | 200 mm<br>CSTSPC1-3     | 10               |
|                            | 300 mm<br>CSTSPC1-4     | 10               | 300 mm<br>CSTSPC1-4     | 10               | 300 mm<br>CSTSPC1-4     | 10               |
| Marking Tag                | MT9                     | 1 Pk. (100 tags) | MT9                     | 1 Pk. (100 tags) | MT9                     | 1 Pk. (100 tags) |

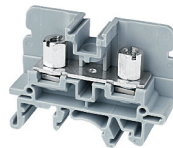
**CSB3/N3U**



**CSB3/N3UL**



**CSB4/N4U**



**CSB5/N5U**



**Dimensions & Weight**

|                           | 50 A Ring Lug Terminal<br>Slotted Hex Nut | 50 A Ring Lug Terminal<br>Long Slotted Hex Nut | 65 A Ring Lug Terminal<br>Slotted Hex Nut | 85 A Ring Lug Terminal<br>Slotted Hex Nut |
|---------------------------|---|--|---|---|
| <b>Width</b>              | <b>9 mm</b>                               | <b>9 mm</b>                                    | <b>13 mm</b>                              | <b>13 mm</b>                              |
| <b>Length</b>             | 49 mm                                     | 49 mm  | 49 mm                                     | 49 mm                                     |
| <b>Height w/ DIN Rail</b> | 35 x 7.5 mm<br>35 x 15 mm                 | 38 mm<br>45.5 mm                               | 38 mm<br>45.5 mm                          | 38 mm<br>45.5 mm                          |
| <b>Weight per piece</b>   | 10.2 g                                    | 11.7 g   | 19.0 g                                    | 19.0 g                                    |

**Technical Data/Ratings**

| Approvals                           |                 |                       |                 |                       |                 |                        |                 |                        |
|-------------------------------------|-----------------|-----------------------|-----------------|-----------------------|-----------------|------------------------|-----------------|------------------------|
| <b>Wire Size (solid / stranded)</b> | <b>22-8 AWG</b> | 0.5-6 mm <sup>2</sup> | <b>22-8 AWG</b> | 0.5-6 mm <sup>2</sup> | <b>16-6 AWG</b> | 1.5-10 mm <sup>2</sup> | <b>16-4 AWG</b> | 1.5-16 mm <sup>2</sup> |
| <b>Voltage Rating</b>               | 600 V           | 1000V AC/DC           | 600 V           | 1000V AC/DC           | 600 V           | 1000V AC/DC            | 600 V           | 1000V AC/DC            |
| <b>Current Rating</b>               | 50 A            | 41 A                  | 50 A            | 41 A                  | 65 A            | 57 A                   | 85 A            | 76 A                   |
| <b>Torque</b>                       | 4.5 lb-in       | 0.5 Nm                | 4.5 lb-in       | 0.5 Nm                | 10 lb-in        | 1.2 Nm                 | 25 lb-in        | 2.0 Nm                 |
| <b>Insulation Material</b>          | Polyamide 66    |                       | Polyamide 66    |                       | Polyamide 66    |                        | Polyamide 66    |                        |

**Installation Instructions**

|                              |                     |  |                        |  |                        |  |                        |  |
|------------------------------|---------------------|--|------------------------|--|------------------------|--|------------------------|--|
| <b>Wire Stripping Length</b> | —                   |  | —                      |  | —                      |  | —                      |  |
| <b>Screw / Stud Size</b>     | M3                  |  | M3                     |  | M4                     |  | M5                     |  |
| <b>Screwdriver</b>           | Hex Nut Driver 7 mm |  | Flat Head 1.0 x 5.5 mm |  | Flat Head 1.0 x 5.5 mm |  | Flat Head 1.0 x 5.5 mm |  |

**Terminal Blocks**

|                        | Cat. No.        | Std. Pk. | Cat. No.         | Std. Pk. | Cat. No.        | Std. Pk. | Cat. No.        | Std. Pk. |
|------------------------|-----------------|----------|------------------|----------|-----------------|----------|-----------------|----------|
| <b>Grey (standard)</b> | <b>CSB3/N3U</b> | 50       | <b>CSB3/N3UL</b> | 50       | <b>CSB4/N4U</b> | 50       | <b>CSB5/N5U</b> | 50       |
| Red R                  | CSB3/N3U/R      | 50       | CSB3/N3UL/R      | 50       | CSB4/N4U/R      | 50       | CSB5/N5U/R      | 50       |
| Blue BU                | CSB3/N3U/BU     | 50       | CSB3/N3UL/BU     | 50       | CSB4/N4U/BU     | 50       | CSB5/N5U/BU     | 50       |
| Black BL               | CSB3/N3U/BL     | 50       | CSB3/N3UL/BL     | 50       | CSB4/N4U/BL     | 50       | CSB5/N5U/BL     | 50       |
| Orange O               | CSB3/N3U/O      | 50       | CSB3/N3UL/O      | 50       | CSB4/N4U/O      | 50       | CSB5/N5U/O      | 50       |
| Green G                | CSB3/N3U/G      | 50       | CSB3/N3UL/G      | 50       | CSB4/N4U/G      | 50       | CSB5/N5U/G      | 50       |
| Yellow Y               | CSB3/N3U/Y      | 50       | CSB3/N3UL/Y      | 50       | CSB4/N4U/Y      | 50       | CSB5/N5U/Y      | 50       |
| White W                | CSB3/N3U/W      | 50       | CSB3/N3UL/W      | 50       | CSB4/N4U/W      | 50       | CSB5/N5U/W      | 50       |

**Accessories**

|                                   | Cat. No.   | Std. Pk.                        | Cat. No.   | Std. Pk.                        | Cat. No.   | Std. Pk.                        | Cat. No.   | Std. Pk.                        |
|-----------------------------------|--|---------------------------------|--|---------------------------------|--|---------------------------------|--|---------------------------------|
| <b>End Plate</b>                  | EPCBS3U  | 50                              | EPCBS3U  | 50                              | EPCBS3U  | 50                              | EPCBS3U  | 50                              |
| <b>DIN Rail</b>                   | 2511120<br>CA701-15/S<br>2511160                                 | 20<br>20<br>10                  | 2511120<br>CA701-15/S<br>2511160                                 | 20<br>20<br>10                  | 2511120<br>CA701-15/S<br>2511160                                 | 20<br>20<br>10                  | 2511120<br>CA701-15/S<br>2511160                                 | 20<br>20<br>10                  |
| <b>End Stop</b>                   | CA802  | 50                              | CA802  | 50                              | CA802  | 50                              | CA802  | 50                              |
| <b>Insulated Jumper Fork Type</b> | CA514/15-2<br>CA514/15-3<br>CA514/15-4                           | 100<br>50<br>50                 | CA514/15-2<br>CA514/15-3<br>CA514/15-4                           | 100<br>50<br>50                 | CA514/2-2<br>CA514/2-3<br>CA514/2-4                              | 100<br>50<br>50                 | CA514/2-2<br>CA514/2-3<br>CA514/2-4                              | 100<br>50<br>50                 |
| <b>Insulated Jumper Ring Lug</b>  | CA514/17-2<br>CA514/17-3<br>CA514/17-4                           | 100<br>50<br>50                 | CA514/17-2<br>CA514/17-3<br>CA514/17-4                           | 100<br>50<br>50                 | CA514/4-2<br>CA514/4-3<br>CA514/4-4                              | 100<br>50<br>50                 | CA514/4-2<br>CA514/4-3<br>CA514/4-4                              | 100<br>50<br>50                 |
| <b>Internal Jumper</b>            | CA728/2<br>CA728/3<br>CA728/4<br>CA728/10                        | 100<br>100<br>100<br>10         | CA728/2<br>CA728/3<br>CA728/4<br>CA728/10                        | 100<br>100<br>100<br>10         | CA772/2<br>CA772/3<br>CA772/4<br>CA772/10                        | 100<br>100<br>100<br>10         | CA772/2<br>CA772/3<br>CA772/4<br>CA772/10                        | 100<br>100<br>100<br>10         |
| <b>Protective Cover</b>           | —<br>CSTSPC2<br>CSTSPC2-1<br>CSTSPC1-2<br>CSTSPC1-3<br>CSTSPC1-4 | —<br>10<br>10<br>10<br>10<br>10 | —<br>CSTSPC2<br>CSTSPC2-1<br>CSTSPC1-2<br>CSTSPC1-3<br>CSTSPC1-4 | —<br>10<br>10<br>10<br>10<br>10 | CSTSPC2<br>CSTSPC2-1<br>—<br>CSTSPC1-2<br>CSTSPC1-3<br>CSTSPC1-4 | 10<br>10<br>—<br>10<br>10<br>10 | CSTSPC2<br>CSTSPC2-1<br>—<br>CSTSPC1-2<br>CSTSPC1-3<br>CSTSPC1-4 | 10<br>10<br>—<br>10<br>10<br>10 |
| <b>Marking Tag</b>                | MT9  | 1 Pk. (100 tags)                | MT9  | 1 Pk. (100 tags)                | MT9  | 1 Pk. (100 tags)                | MT9  | 1 Pk. (100 tags)                |

# CSTSN SERIES

STUD / RING LUG TERMINALS

## STUD TYPE RING LUG TERMINAL BLOCKS

### HIGHLIGHTS

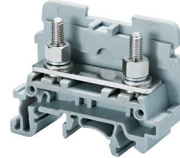
#### FEATURES

- Various sizes
  - Wire size up to 2 AWG
  - Current rating up to 125 A
- Suitable for standard fork type / ring lug connectors
- Version with standard Hex Nut (**CSTSN Series**)
- Version with slotted barrel (**CSTSB Series**)
- Compact design
- 2, 3, 4 pole fork type and ring lug jumpers

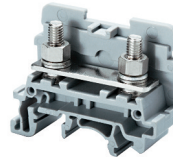
#### APPLICATIONS

- Applications with vibration
  - Machinery
  - Transportation
  - Vehicles
- Provides solution when ring / fork lug is needed
- Compact / Space saving Panels

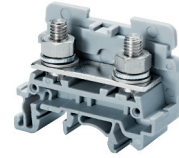
### CSTSN4U



### CSTSN5U



### CSTSN6U



#### Dimensions & Weight

|                          | 65 A Bolt Terminal<br>M4 Hex Nut | 80 A Bolt Terminal<br>M5 Hex Nut | 125 A Bolt Terminal<br>M6 Hex Nut |
|--------------------------|----------------------------------|----------------------------------|-----------------------------------|
| <b>Width</b>             | <b>17 mm</b>                     | <b>17 mm</b>                     | <b>17 mm</b>                      |
| <b>Length</b>            | <b>50 mm</b>                     | <b>50 mm</b>                     | <b>50 mm</b>                      |
| <b>Height w DIN Rail</b> | 35 x 7.5 mm<br>35 x 15 mm        | 40.7 mm<br>48.0 mm               | 40.7 mm<br>48.0 mm                |
| <b>Weight per piece</b>  | <b>21.5 g</b>                    | <b>23.4 g</b>                    | <b>30.4 g</b>                     |

#### Technical Data/Ratings

| Approvals                           |                 |                        |                 |                        |                 |                        |
|-------------------------------------|-----------------|------------------------|-----------------|------------------------|-----------------|------------------------|
| <b>Wire Size (solid / stranded)</b> | <b>22-6 AWG</b> | 1.5-10 mm <sup>2</sup> | <b>22-4 AWG</b> | 1.5-16 mm <sup>2</sup> | <b>22-2 AWG</b> | 1.5-35 mm <sup>2</sup> |
| <b>Voltage Rating</b>               | 600 V           | 1000V AC/DC            | 600 V           | 1000V AC/DC            | 600 V           | 1000V AC/DC            |
| <b>Current Rating</b>               | <b>65 A</b>     | 57 A                   | <b>80 A</b>     | 76 A                   | <b>125 A</b>    | 125 A                  |
| <b>Torque</b>                       | 14 lb-in        | 1.2 Nm                 | 25 lb-in        | 2.0 Nm                 | 25 lb-in        | 3.0 Nm                 |
| <b>Insulation Material</b>          | Polyamide 66    |                        | Polyamide 66    |                        | Polyamide 66    |                        |

#### Installation Instructions

|                              |                     |                     |                     |
|------------------------------|---------------------|---------------------|---------------------|
| <b>Wire Stripping Length</b> | —                   | —                   | —                   |
| <b>Screw / Stud Size</b>     | <b>M4</b>           | <b>M5</b>           | <b>M6</b>           |
| <b>Screwdriver</b>           | Hex Nut Driver 7 mm | Hex Nut Driver 8 mm | Hex Nut Driver 9 mm |

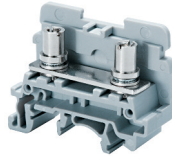
#### Terminal Blocks

|                        | Cat. No.       | Std. Pk. | Cat. No.       | Std. Pk. | Cat. No.       | Std. Pk. |
|------------------------|----------------|----------|----------------|----------|----------------|----------|
| <b>Grey (standard)</b> | <b>CSTSN4U</b> | 100      | <b>CSTSN5U</b> | 100      | <b>CSTSN6U</b> | 100      |
| Red R                  | CSTSN4U/R      | 100      | CSTSN5U/R      | 100      | CSTSN6U/R      | 100      |
| Blue BU                | CSTSN4U/BU     | 100      | CSTSN5U/BU     | 100      | CSTSN6U/BU     | 100      |
| Black BL               | CSTSN4U/BL     | 100      | CSTSN5U/BL     | 100      | CSTSN6U/BL     | 100      |
| Orange O               | CSTSN4U/O      | 100      | CSTSN5U/O      | 100      | CSTSN6U/O      | 100      |
| Green G                | CSTSN4U/G      | 100      | CSTSN5U/G      | 100      | CSTSN6U/G      | 100      |
| Yellow Y               | CSTSN4U/Y      | 100      | CSTSN5U/Y      | 100      | CSTSN6U/Y      | 100      |
| White W                | CSTSN4U/W      | 100      | CSTSN5U/W      | 100      | CSTSN6U/W      | 100      |

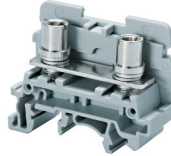
#### Accessories

|                                   | Cat. No.                | Std. Pk.         | Cat. No.                | Std. Pk.         | Cat. No.                | Std. Pk.         |
|-----------------------------------|-------------------------|------------------|-------------------------|------------------|-------------------------|------------------|
| <b>End Plate</b>                  | EPCSTSU                 | 50               | EPCSTSU                 | 50               | EPCSTSU                 | 50               |
| <b>DIN Rail</b>                   | 2511120                 | 20               | 2511120                 | 20               | 2511120                 | 20               |
|                                   | CA701-15/S              | 20               | CA701-15/S              | 20               | CA701-15/S              | 20               |
|                                   | 2511160                 | 10               | 2511160                 | 10               | 2511160                 | 10               |
| <b>End Stop</b>                   | CA802                   | 50               | CA802                   | 50               | CA802                   | 50               |
| <b>Insulated Jumper Fork Type</b> | 2 pole<br>CA514/1-2     | 100              | 2 pole<br>CA514/1-2     | 100              | 2 pole<br>CA514/7-2     | 100              |
|                                   | 3 pole<br>CA514/1-3     | 50               | 3 pole<br>CA514/1-3     | 50               | 3 pole<br>CA514/7-3     | 50               |
|                                   | 4 pole<br>CA514/1-4     | 50               | 4 pole<br>CA514/1-4     | 50               | 4 pole<br>CA514/7-4     | 50               |
| <b>Jumper Ring Lug</b>            | 2 pole<br>CA514/3-2     | 100              | 2 pole<br>CA514/3-2     | 100              | 2 pole<br>CA514/8-2     | 100              |
|                                   | 3 pole<br>CA514/3-3     | 50               | 3 pole<br>CA514/3-3     | 50               | 3 pole<br>CA514/8-3     | 50               |
|                                   | 4 pole<br>CA514/3-4     | 50               | 4 pole<br>CA514/3-4     | 50               | 4 pole<br>CA514/8-4     | 50               |
| <b>Protective Cover</b>           | 2 Terminal<br>CSTSPC2   | 10               | 2 Terminal<br>CSTSPC2   | 10               | 2 Terminal<br>CSTSPC2   | 10               |
|                                   | 3 Terminal<br>CSTSPC2-1 | 10               | 3 Terminal<br>CSTSPC2-1 | 10               | 3 Terminal<br>CSTSPC2-1 | 10               |
|                                   | 4 Terminal<br>—         | —                | 4 Terminal<br>—         | —                | 4 Terminal<br>—         | —                |
|                                   | 100 mm<br>CSTSPC1-2     | 10               | 100 mm<br>CSTSPC1-2     | 10               | 100 mm<br>CSTSPC1-2     | 10               |
|                                   | 200 mm<br>CSTSPC1-3     | 10               | 200 mm<br>CSTSPC1-3     | 10               | 200 mm<br>CSTSPC1-3     | 10               |
|                                   | 300 mm<br>CSTSPC1-4     | 10               | 300 mm<br>CSTSPC1-4     | 10               | 300 mm<br>CSTSPC1-4     | 10               |
| <b>Marking Tag</b>                | MT2B4                   | 1 Pk. (100 tags) | MT2B4                   | 1 Pk. (100 tags) | MT2B4                   | 1 Pk. (100 tags) |

**CSTSB4U**



**CSTSB5U**



**Dimensions & Weight**

|                   | CSTSB4U                   | CSTSB5U            |
|-------------------|---------------------------|--------------------|
| Width             | 17 mm                     | 17 mm              |
| Length            | 50 mm                     | 50 mm              |
| Height w DIN Rail | 35 x 7.5 mm<br>35 x 15 mm | 40.7 mm<br>48.0 mm |
| Weight per piece  | 24 g                      | 25.5 g             |

**Technical Data/Ratings**

| Approvals                    |              |                        |              |                        |
|------------------------------|--------------|------------------------|--------------|------------------------|
| Wire Size (solid / stranded) | 22-6 AWG     | 1.5-10 mm <sup>2</sup> | 22-4 AWG     | 1.5-16 mm <sup>2</sup> |
| Voltage Rating               | 600 V        | 1000V AC/DC            | 600 V        | 1000V AC/DC            |
| Current Rating               | 65 A         | 57 A                   | 80 A         | 76 A                   |
| Torque                       | 14 lb-in     | 1.2 Nm                 | 25 lb-in     | 2.0 Nm                 |
| Insulation Material          | Polyamide 66 |                        | Polyamide 66 |                        |

**Installation Instructions**

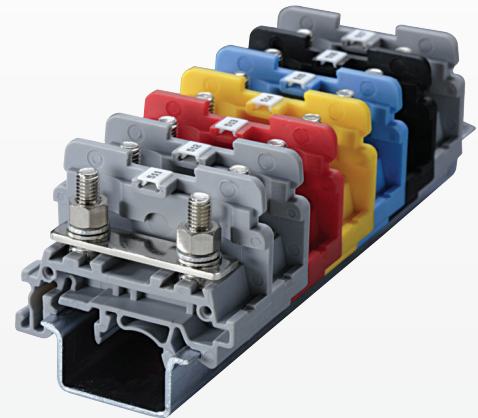
|                       |                        |    |
|-----------------------|------------------------|----|
| Wire Stripping Length | —                      |    |
| Screw / Stud Size     | M4                     | M5 |
| Screwdriver           | Flat Head 1.0 x 5.5 mm |    |

**Terminal Blocks**

|                        | Cat. No.       | Std. Pk. | Cat. No.       | Std. Pk. |
|------------------------|----------------|----------|----------------|----------|
| <b>Grey (standard)</b> | <b>CSTSB4U</b> | 100      | <b>CSTSB5U</b> | 100      |
| Red R                  | CSTSB4U/R      | 100      | CSTSB5U/R      | 100      |
| Blue BU                | CSTSB4U/BU     | 100      | CSTSB5U/BU     | 100      |
| Black BL               | CSTSB4U/BL     | 100      | CSTSB5U/BL     | 100      |
| Orange O               | CSTSB4U/O      | 100      | CSTSB5U/O      | 100      |
| Green G                | CSTSB4U/G      | 100      | CSTSB5U/G      | 100      |
| Yellow Y               | CSTSB4U/Y      | 100      | CSTSB5U/Y      | 100      |
| White W                | CSTSB4U/W      | 100      | CSTSB5U/W      | 100      |

**Accessories**

|                            | Cat. No.   | Std. Pk.         | Cat. No.   | Std. Pk.         |
|----------------------------|------------|------------------|------------|------------------|
| End Plate                  | EPCSTSU    | 50               | EPCSTSU    | 50               |
| DIN Rail                   | 2511120    | 20               | 2511120    | 20               |
|                            | CA701-15/S | 20               | CA701-15/S | 20               |
|                            | 2511160    | 10               | 2511160    | 10               |
| End Stop                   | CA802      | 50               | CA802      | 50               |
| Insulated Jumper Fork Type | CA514/1-2  | 100              | CA514/1-2  | 100              |
|                            | CA514/1-3  | 50               | CA514/1-3  | 50               |
|                            | CA514/1-4  | 50               | CA514/1-4  | 50               |
| Insulated Jumper Ring Lug  | CA514/3-2  | 100              | CA514/3-2  | 100              |
|                            | CA514/3-3  | 50               | CA514/3-3  | 50               |
|                            | CA514/3-4  | 50               | CA514/3-4  | 50               |
| Protective Cover           | CSTSPC2    | 10               | CSTSPC2    | 10               |
|                            | CSTSPC2-1  | 10               | CSTSPC2-1  | 10               |
|                            | —          | —                | —          | —                |
|                            | CSTSPC1-2  | 10               | CSTSPC1-2  | 10               |
|                            | CSTSPC1-3  | 10               | CSTSPC1-3  | 10               |
|                            | CSTSPC1-4  | 10               | CSTSPC1-4  | 10               |
| Marking Tag                | MT2B4      | 1 Pk. (100 tags) | MT2B4      | 1 Pk. (100 tags) |



# STH SERIES

## STUD / RING LUG TERMINALS

## HINGE TYPE RING LUG TERMINAL BLOCKS

### HIGHLIGHTS

#### FEATURES

- Bolt Feed Through Terminals
- Suitable for standard fork type / ring lugs
- Captive nut system
- Only standard flat head screw driver needed to tighten connection
- IP20 touch proof terminals with hinged plastic cover
- 2, 3, 4 pole fork type and ring lug jumpers

#### APPLICATIONS

- Applications with vibration
  - Machinery
  - Transportation
  - Vehicles
- Provides solution when ring / fork lug is needed



#### Dimensions & Weight

|                   | 9 mm                      | 11 mm              | 18 mm              |
|-------------------|---------------------------|--------------------|--------------------|
| Width             | 9 mm                      | 11 mm              | 18 mm              |
| Length            | 47 mm                     | 46 mm              | 64 mm              |
| Height w DIN Rail | 35 x 7.5 mm<br>35 x 15 mm | 47.3 mm<br>54.8 mm | 52.2 mm<br>59.0 mm |
| Weight per piece  | 15.0 g                    | 62.5 g             | 57.8 g             |

#### Technical Data/Ratings

| Approvals                    |              |                       |              |                       |              |                        |
|------------------------------|--------------|-----------------------|--------------|-----------------------|--------------|------------------------|
| Wire Size (solid / stranded) | 22-8 AWG     | 1.5-6 mm <sup>2</sup> | 22-8 AWG     | 1.5-6 mm <sup>2</sup> | 22-2 AWG     | 1.5-35 mm <sup>2</sup> |
| Voltage Rating               | 600 V        | 1000V AC/DC           | 600 V        | 1000V AC/DC           | 600 V        | 1000V AC/DC            |
| Current Rating               | 50 A         | 41 A                  | 50 A         | 41 A                  | 115 A        | 125 A                  |
| Torque                       | 4.5 lb-in    | 0.5 Nm                | 14 lb-in     | 1.2 Nm                | 25 lb-in     | 3.0 Nm                 |
| Insulation Material          | Polyamide 66 |                       | Polyamide 66 |                       | Polyamide 66 |                        |

#### Installation Instructions

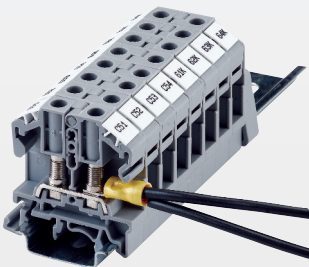
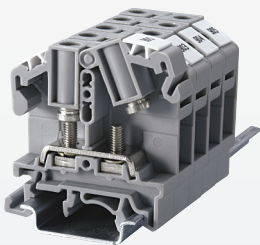
|                       |                      |                      |                        |
|-----------------------|----------------------|----------------------|------------------------|
| Wire Stripping Length | —                    | —                    | —                      |
| Screw / Stud Size     | M3                   | M4                   | M6                     |
| Screwdriver           | Flat Head 0.8 x 4 mm | Flat Head 0.8 x 4 mm | Flat Head 1.0 x 5.5 mm |

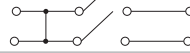
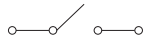
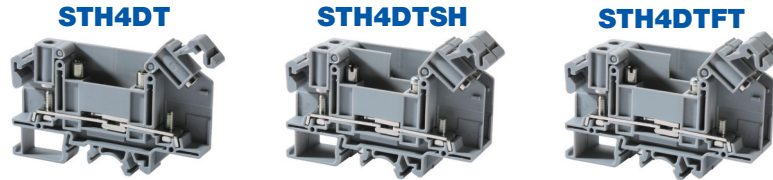
#### Terminal Blocks

|                        | Cat. No.    | Std. Pk. | Cat. No.    | Std. Pk. | Cat. No.    | Std. Pk. |
|------------------------|-------------|----------|-------------|----------|-------------|----------|
| <b>Grey (standard)</b> | <b>STH3</b> | 100      | <b>STH4</b> | 50       | <b>STH6</b> | 50       |
| Red R                  | STH3/R      | 100      | STH4/R      | 50       | STH6/R      | 50       |
| Blue BU                | STH3/BU     | 100      | STH4/BU     | 50       | STH6/BU     | 50       |
| Black BL               | STH3/BL     | 100      | STH4/BL     | 50       | STH6/BL     | 50       |
| Orange O               | STH3/O      | 100      | STH4/O      | 50       | STH6/O      | 50       |
| Green G                | STH3/G      | 100      | STH4/G      | 50       | STH6/G      | 50       |
| Yellow Y               | STH3/Y      | 100      | STH4/Y      | 50       | STH6/Y      | 50       |
| White W                | STH3/W      | 100      | STH4/W      | 50       | STH6/W      | 50       |

#### Accessories

|                             | Cat. No.   | Std. Pk.         | Cat. No.   | Std. Pk.         | Cat. No.   | Std. Pk.         |
|-----------------------------|------------|------------------|------------|------------------|------------|------------------|
| End Plate                   | EPSTH3     | 50               | EPSTH4     | 50               | EPSTH6     | 50               |
| DIN Rail                    | 2511120    | 20               | 2511120    | 20               | 2511120    | 20               |
|                             | CA701-15/S | 20               | CA701-15/S | 20               | CA701-15/S | 20               |
|                             | 2511160    | 10               | 2511160    | 10               | 2511160    | 10               |
| End Stop                    | CA702      | 100              | CA702      | 100              | CA702      | 100              |
|                             | CA802      | 50               | CA802      | 50               | CA802      | 50               |
|                             | CA202      | 50               | CA202      | 50               | CA202      | 50               |
| Jumpers Fork Type           | CA512/15-2 | 100              | CA512/13-2 | 100              | —          | —                |
|                             | CA512/15-3 | 50               | CA512/13-3 | 50               | —          | —                |
|                             | CA512/15-4 | 50               | CA512/13-4 | 50               | —          | —                |
| Insulated Jumpers Fork Type | CA514/15-2 | 100              | CA514/13-2 | 100              | —          | —                |
|                             | CA514/15-3 | 50               | CA514/13-3 | 50               | —          | —                |
|                             | CA514/15-4 | 50               | CA514/13-4 | 50               | —          | —                |
| Jumpers Ring Lug            | CA512/17-2 | 100              | CA512/14-2 | 100              | —          | —                |
|                             | CA512/17-3 | 50               | CA512/14-3 | 50               | —          | —                |
|                             | CA512/17-4 | 50               | CA512/14-4 | 50               | —          | —                |
| Insulated Jumpers Ring Lug  | CA514/17-2 | 100              | CA514/14-2 | 100              | —          | —                |
|                             | CA514/17-3 | 50               | CA514/14-3 | 50               | —          | —                |
|                             | CA514/17-4 | 50               | CA514/14-4 | 50               | —          | —                |
| Internal Jumpers            | CA773/2    | 100              | —          | —                | CA774/2    | 100              |
|                             | CA773/3    | 50               | —          | —                | CA774/3    | 50               |
|                             | CA773/4    | 50               | —          | —                | CA774/4    | 50               |
|                             | CA773/10   | 10               | —          | —                | —          | —                |
| Marking Tag                 | MT8        | 1 Pk. (100 tags) | MT10       | 1 Pk. (100 tags) | MT16       | 1 Pk. (100 tags) |





**Dimensions & Weight**

|                   | Disconnect Terminal Block Hinge Type | Double Disconnect Terminal Block | Feed-Through Terminal Block Disconnect Profile |
|-------------------|--------------------------------------|----------------------------------|--|
| Width             | <b>11 mm</b>                         | <b>22 mm</b>                     | <b>11 mm</b>                                   |
| Length            | 86 mm                                | 86 mm                            | 86 mm  |
| Height w DIN Rail | 35 x 7.5 mm<br>35 x 15 mm            | 52.2 mm<br>59.0 mm               | 52.2 mm<br>59.0 mm                             |
| Weight per piece  | 42.8 g                               | 42.3 g                           | 36.6 g   |

**Technical Data/Ratings**

| Approvals                    |                 |                       |                 |                       |                 |                       |
|------------------------------|-----------------|-----------------------|-----------------|-----------------------|-----------------|-----------------------|
| Wire Size (solid / stranded) | <b>22-8 AWG</b> | 1.5-6 mm <sup>2</sup> | <b>22-8 AWG</b> | 1.5-6 mm <sup>2</sup> | <b>22-8 AWG</b> | 1.5-6 mm <sup>2</sup> |
| Voltage Rating               | 600 V           | 1000V AC/DC           | 300 V           | 1000V AC/DC           | 600 V           | 1000V AC/DC           |
| Current Rating               | 35 A            | 41 A                  | 25 A            | 34 A                  | 50 A            | 41 A                  |
| Torque                       | 14 lb-in        | 1.2 Nm                | 14 lb-in        | 1.2 Nm                | 14 lb-in        | 1.2 Nm                |
| Insulation Material          | Polyamide 66    |                       | Polyamide 66    |                       | Polyamide 66    |                       |

**Installation Instructions**

|                       |                      |  |                      |  |                      |  |
|-----------------------|----------------------|--|----------------------|--|----------------------|--|
| Wire Stripping Length | -                    |  | -                    |  | -                    |  |
| Screw / Stud Size     | M4                   |  | M4                   |  | M4                   |  |
| Screwdriver           | Flat Head 0.8 x 4 mm |  | Flat Head 0.8 x 4 mm |  | Flat Head 0.8 x 4 mm |  |

**Terminal Blocks**

|             | Cat. No.      | Std. Pk.  | Cat. No.        | Std. Pk.  | Cat. No.        | Std. Pk.   |
|-------------|---------------|-----------|-----------------|-----------|-----------------|------------|
| <b>Grey</b> | <b>STH4DT</b> | <b>50</b> | <b>STH4DTSH</b> | <b>24</b> | <b>STH4DTFT</b> | <b>100</b> |

**Accessories**

|                             | Cat. No.                         | Std. Pk.                               | Cat. No.                         | Std. Pk.                               | Cat. No.                         | Std. Pk.                               |                 |
|-----------------------------|----------------------------------|--|----------------------------------|--|----------------------------------|--|-----------------|
| End Plate                   | EPSTH4DT                         | 50                                     | EPSTH4DT                         | 50                                     | EPSTH4DT                         | 50                                     |                 |
| DIN Rail                    | 2511120<br>CA701-15/S<br>2511160 | 20<br>20<br>10                         | 2511120<br>CA701-15/S<br>2511160 | 20<br>20<br>10                         | 2511120<br>CA701-15/S<br>2511160 | 20<br>20<br>10                         |                 |
| End Stop                    | CA702<br>CA802<br>CA202          | 100<br>50<br>50                        | CA702<br>CA802<br>CA202          | 100<br>50<br>50                        | CA702<br>CA802<br>CA202          | 100<br>50<br>50                        |                 |
| Jumpers Fork Type           | 2 pole<br>3 pole<br>4 pole       | CA512/13-2<br>CA512/13-3<br>CA512/13-4 | 100<br>50<br>50                  | CA512/13-2<br>CA512/13-3<br>CA512/13-4 | 100<br>50<br>50                  | CA512/13-2<br>CA512/13-3<br>CA512/13-4 | 100<br>50<br>50 |
| Insulated Jumpers Fork Type | 2 pole<br>3 pole<br>4 pole       | CA514/13-2<br>CA514/13-3<br>CA514/13-4 | 100<br>50<br>50                  | CA514/13-2<br>CA514/13-3<br>CA514/13-4 | 100<br>50<br>50                  | CA514/13-2<br>CA514/13-3<br>CA514/13-4 | 100<br>50<br>50 |
| Jumpers Ring Lug            | 2 pole<br>3 pole<br>4 pole       | CA512/14-2<br>CA512/14-3<br>CA512/14-4 | 100<br>50<br>50                  | CA512/14-2<br>CA512/14-3<br>CA512/14-4 | 100<br>50<br>50                  | CA512/14-2<br>CA512/14-3<br>CA512/14-4 | 100<br>50<br>50 |
| Insulated Jumpers Ring Lug  | 2 pole<br>3 pole<br>4 pole       | CA514/14-2<br>CA514/14-3<br>CA514/14-4 | 100<br>50<br>50                  | CA514/14-2<br>CA514/14-3<br>CA514/14-4 | 100<br>50<br>50                  | CA514/14-2<br>CA514/14-3<br>CA514/14-4 | 100<br>50<br>50 |
| Insulated Alternate Jumpers | 3 pole<br>4 pole                 | CA514/14-3A<br>CA514/14-4A             | 10<br>10                         | CA514/14-3A<br>CA514/14-4A             | 10<br>10                         | CA514/14-3A<br>CA514/14-4A             | 10<br>10        |
| Shorting Plug               | QJ11/2                           | 25                                     | QJ11/2                           | 25                                     | -                                | -                                      |                 |
| Lock Out Cap                | LCSTH4DT                         | 25                                     | LCSTH4DT                         | 25                                     | -                                | -                                      |                 |
| Marking Tag                 | MT10                             | 1 Pk. (100 tags)                       | MT10                             | 1 Pk. (100 tags)                       | MT10                             | 1 Pk. (100 tags)                       |                 |

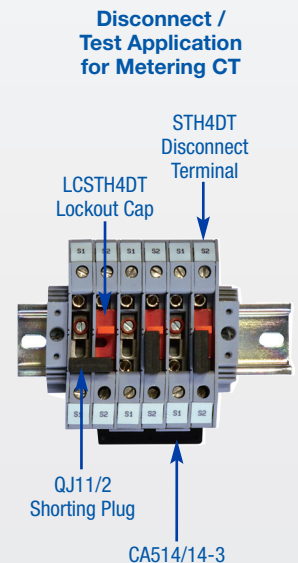
**HIGHLIGHTS**

**FEATURES**

- Bolt Disconnect Terminals
- Disconnect (STH4DT)
- 2 Shorted Disconnect Terminals (STH4DTSH)
- Feed-Through with same profile (STH4DTFT)
- Suitable for standard fork type / ring lugs
- Captive nut system
- IP20 touch proof terminals with hinged plastic cover
- 2, 3, 4 pole fork type and ring lug jumpers

**APPLICATIONS**

- Disconnect / Test Applications
- Measuring / Control Circuit
- Utility Instruments and Transformer Applications
- Meter Replacement
- External Current Measurement





# CBB SERIES

STUD / RING LUG TERMINALS

## RING LUG POWER TERMINAL BLOCKS

### HIGHLIGHTS

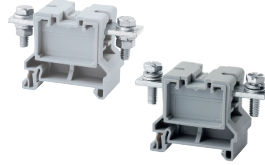
#### FEATURES

- High Current up to 310A
- Feed-Through Terminals
  - Nut / Bolt version
  - Version with threaded current bar (LS) for fast wiring without 2 wrenches
- Wire crimped into ring / fork lug on to the flat current bar
- Special Mounting foot design for tight fit on rail
- Protective Cover in various length
- 2, 3 pole jumper bars

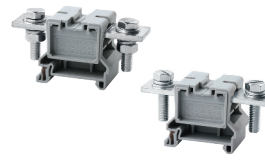
#### APPLICATIONS

- High Current Power Applications
- Large size wires
- Power Distribution Feeding Applications
- Provides solution when ring / fork lug is needed

### CBB35/50 CBB35/50LS



### CBB70 CBB70LS



### CBB95 CBB95LS



#### Dimensions & Weight

|                   | 150 A Feed Through Power Terminal | 175 A Feed Through Power Terminal | 230 A Feed Through Power Terminal |
|-------------------|-----------------------------------|-----------------------------------|-----------------------------------|
| Width             | 32 mm                             | 38 mm                             | 38 mm                             |
| Length            | 75 mm                             | 92 mm                             | 92 mm                             |
| Height w DIN Rail | 35 x 7.5 mm<br>35 x 15 mm         | 47.5 mm<br>54.5 mm                | 47.5 mm<br>54.5 mm                |
| Weight per piece  | 82.0 g                            | 157.5 g                           | 193.0 g                           |

#### Technical Data/Ratings

| Approvals                    |                                     |  |                                    |  |                                     |  |
|------------------------------|-------------------------------------|--|------------------------------------|--|-------------------------------------|--|
| Wire Size (solid / stranded) | 10-1/0 AWG / 6-50.0 mm <sup>2</sup> |  | 8-2/0 AWG / 6-70.0 mm <sup>2</sup> |  | 8-4/0 AWG / 16-95.0 mm <sup>2</sup> |  |
| Voltage Rating               | 600 V / 1000V AC/DC                 |  | 600 V / 1000V AC/DC                |  | 600 V / 1000V AC/DC                 |  |
| Current Rating               | 150 A / 150 A                       |  | 175 A / 192 A                      |  | 230 A / 232 A                       |  |
| Torque                       | 27 lb-in / 3.0Nm                    |  | 54.5 lb-in / 6.0 Nm                |  | 90 lb-in / 10.0 Nm                  |  |
| Insulation Material          | Polyamide 66                        |  |                                    |  |                                     |  |

#### Installation Instructions

|                       |    |  |    |  |     |  |
|-----------------------|----|--|----|--|-----|--|
| Wire Stripping Length | —  |  | —  |  | —   |  |
| Screw / Stud Size     | M6 |  | M8 |  | M10 |  |
| Screwdriver           |    |  |    |  |     |  |

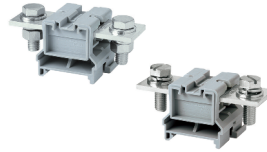
#### Terminal Blocks

|   | Cat. No.          | Std. Pk.  | Cat. No.       | Std. Pk.  | Cat. No.       | Std. Pk.  |
|---|-------------------|-----------|----------------|-----------|----------------|-----------|
| <b>Grey</b><br>Nut & Bolt configuration<br>Threaded Current Bar | <b>CBB35/50</b>   | <b>10</b> | <b>CBB70</b>   | <b>10</b> | <b>CBB95</b>   | <b>10</b> |
|   | <b>CBB35/50LS</b> | <b>10</b> | <b>CBB70LS</b> | <b>10</b> | <b>CBB95LS</b> | <b>10</b> |

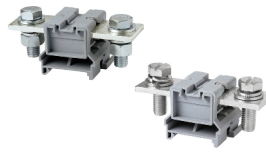
#### Accessories

|   | Cat. No.   | Std. Pk.   | Cat. No.                               | Std. Pk.   | Cat. No.                               | Std. Pk.  |                                     |
|---|--|--|--|--|--|---|-------------------------------------|
| Partition Plate                                   | PPCBB  | 50   | PPCBB                                  | 50   | PPCBB1                                 | 50  |                                     |
| DIN Rail  | 2511120<br>CA701-15/S  | 20<br>20   | 2511120<br>CA701-15/S                  | 20<br>20   | 2511120<br>CA701-15/S                  | 20<br>20  |                                     |
| End Stop  | CA102<br>CA202   | 50<br>50   | CA102<br>CA202                         | 50<br>50   | CA102<br>CA202                         | 50<br>50  |                                     |
| Protective Cover for installing on PPCBB & PPCBB1 | 70 mm<br>80 mm<br>100 mm<br>130 mm<br>160 mm<br>200 mm<br>250 mm | CBBPC1/70<br>CBBPC1/80<br>CTSPC2-1<br>CBBPC1/130<br>CBBPC1/160<br>CBBPC1/200<br>CBBPC1/250 | 10<br>10<br>10<br>10<br>10<br>10<br>10 | CBBPC1/70<br>CBBPC1/80<br>CTSPC2-1<br>CBBPC1/130<br>CBBPC1/160<br>CBBPC1/200<br>CBBPC1/250 | 10<br>10<br>10<br>10<br>10<br>10<br>10 | —<br>—<br>CBBPC2/100<br>—<br>CBBPC2/160<br>CBBPC2/200<br>CBBPC2/250 | —<br>—<br>10<br>—<br>10<br>10<br>10 |
| Permanent Jumper Bars                             | 2 pole<br>3 pole   | CA790/2<br>CA790/3   | 10<br>10                               | CA791/2<br>CA791/3   | 10<br>10                               | CA791/2<br>CA791/3  | 10<br>10                            |
| Marking Tag                                       | MT12   | 1 Pk. (100 tags)   | MT16                                   | 1 Pk. (100 tags)   | MT16                                   | 1 Pk. (100 tags)  |                                     |

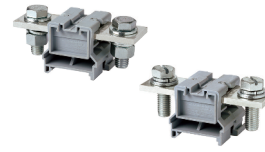
**CBB120  
CBB120LS**



**CBB150  
CBB150LS**



**CBB185  
CBB185LS**



**Dimensions & Weight**

|  | 255 A Feed Through Power Terminal | 285 A Feed Through Power Terminal | 310 A Feed Through Power Terminal |
|--|-----------------------------------|-----------------------------------|-----------------------------------|
| <b>Width</b>                                       | <b>48 mm</b>                      | <b>48 mm</b>                      | <b>48 mm</b>                      |
| <b>Length</b>                                      | 100 mm                            | 110 mm                            | 110 mm                            |
| <b>Height w DIN Rail</b> 35 x 7.5 mm<br>35 x 15 mm | 47.3 mm<br>54.5 mm                | 47.3 mm<br>54.5 mm                | 47.3 mm<br>54.5 mm                |
| <b>Weight per piece</b>                            | 244.0 g                           | 316.0 g                           | 319.4 g                           |

**Technical Data/Ratings**

| Approvals                           |                    |                        |                    |                        |                    |                        |
|-------------------------------------|--------------------|------------------------|--------------------|------------------------|--------------------|------------------------|
| <b>Wire Size (solid / stranded)</b> | <b>8-250 KCMIL</b> | 16-120 mm <sup>2</sup> | <b>8-300 KCMIL</b> | 16-150 mm <sup>2</sup> | <b>8-350 KCMIL</b> | 16-185 mm <sup>2</sup> |
| <b>Voltage Rating</b>               | 600 V              | 1000V AC/DC            | 600 V              | 1000V AC/DC            | 600 V              | 1000V AC/DC            |
| <b>Current Rating</b>               | 255 A              | 269 A                  | 285 A              | 309 A                  | 310 A              | 353 A                  |
| <b>Torque</b>                       | 90 lb-in           | 10.0 Nm                | 127 lb-in          | 14.0 Nm                | 127 lb-in          | 14.0 Nm                |
| <b>Insulation Material</b>          | Polyamide 66       |                        | Polyamide 66       |                        | Polyamide 66       |                        |

**Installation Instructions**

|                              |                                    |                                    |                                    |
|------------------------------|------------------------------------|------------------------------------|------------------------------------|
| <b>Wire Stripping Length</b> | —                                  | —                                  | —                                  |
| <b>Screw / Stud Size</b>     | M10                                | M12                                | M12                                |
| <b>Screwdriver</b>           | Wrench M10<br>Flat Head 1 x 1.5 mm | Wrench M12<br>Flat Head 1 x 1.5 mm | Wrench M12<br>Flat Head 1 x 1.5 mm |

**Terminal Blocks**

|                          | Cat. No.        | Std. Pk.  | Cat. No.        | Std. Pk.  | Cat. No.        | Std. Pk.  |
|--------------------------|-----------------|-----------|-----------------|-----------|-----------------|-----------|
| <b>Grey</b>              |                 |           |                 |           |                 |           |
| Nut & Bolt configuration | <b>CBB120</b>   | <b>10</b> | <b>CBB150</b>   | <b>10</b> | <b>CBB185</b>   | <b>10</b> |
| Threaded Current Bar     | <b>CBB120LS</b> | <b>10</b> | <b>CBB150LS</b> | <b>10</b> | <b>CBB185LS</b> | <b>10</b> |

**Accessories**

|   | Cat. No.   | Std. Pk.             | Cat. No.   | Std. Pk.             | Cat. No.   | Std. Pk.             |
|---|--|----------------------|--|----------------------|--|----------------------|
| <b>Partition Plate</b>  | PPCBB1   | 50                   | PPCBB1   | 50                   | PPCBB1   | 50                   |
| <b>DIN Rail</b>   | 2511120<br>CA701-15/S                                | 20<br>20             | 2511120<br>CA701-15/S                                | 20<br>20             | 2511120<br>CA701-15/S                                | 20<br>20             |
| <b>End Stop</b>   | CA102<br>CA202                                       | 50<br>50             | CA102<br>CA202                                       | 50<br>50             | CA102<br>CA202                                       | 50<br>50             |
| <b>Protective Cover</b> 100 mm<br>for installing on 160 mm<br>PPCBB & PPCBB1 200 mm<br>250 mm | CBBPC2/100<br>CBBPC2/160<br>CBBPC2/200<br>CBBPC2/250 | 10<br>10<br>10<br>10 | CBBPC2/100<br>CBBPC2/160<br>CBBPC2/200<br>CBBPC2/250 | 10<br>10<br>10<br>10 | CBBPC2/100<br>CBBPC2/160<br>CBBPC2/200<br>CBBPC2/250 | 10<br>10<br>10<br>10 |
| <b>Permanent Jumper Bars</b> 2 pole<br>3 pole   | CA793/2<br>CA793/3                                   | 10<br>10             | CA794/2<br>CA794/3                                   | 10<br>10             | CA794/2<br>CA794/3                                   | 10<br>10             |
| <b>Marking Tag</b>  | MT16   | 1 Pk. (100 tags)     | MT16   | 1 Pk. (100 tags)     | MT16   | 1 Pk. (100 tags)     |

# PTB SERIES

STUD / RING LUG TERMINALS

## HIGH CURRENT POWER TERMINAL BLOCKS

### HIGHLIGHTS

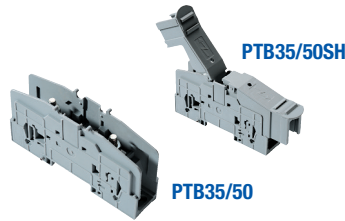
#### FEATURES

- Panel / DIN Rail mountable
- High Current up to 230A
- Finger safe protective cover (PSPTBXX)
- Modular / stackable design
- 2, 3, 4 pole jumper system

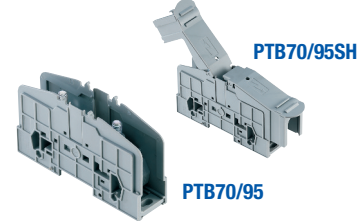
#### APPLICATIONS

- High Current Power Applications
- Large size wires
- Power Distribution Feeding Applications
- Provides solution when ring / fork lug is needed

### PTB35/50 PTB35/50SH



### PTB70/95 PTB70/95SH



#### Dimensions & Weight

|                   | 25 mm                                       | 32 mm                            |
|-------------------|---|----------------------------------|
| Width             | 25 mm                                       | 32 mm                            |
| Length            | 113 / 169 mm                                | 130 / 192 mm                     |
| Height w DIN Rail | 61.0 / 66.5 mm<br>35 x 7.5 mm<br>35 x 15 mm | 76.6 / 78.0 mm<br>84.5 / 86.0 mm |
| Weight per piece  | 112.0 / 130.5 g                             | 174.4 / 198.2 g                  |

#### Technical Data/Ratings

| Approvals                    |              |                        |              |                        |
|------------------------------|--------------|------------------------|--------------|------------------------|
| Wire Size (solid / stranded) | 8-2 AWG      | 1.5-50 mm <sup>2</sup> | 8-4/0 AWG    | 1.5-95 mm <sup>2</sup> |
| Voltage Rating               | 600 V        | 1000V AC/DC            | 600 V        | 1000V AC/DC            |
| Current Rating               | 115 A        | 150 A                  | 230 A        | 232 A                  |
| Torque                       | 27 lb-in     | 3.0 Nm                 | 87 lb-in     | 10.0 Nm                |
| Insulation Material          | Polyamide 66 |                        | Polyamide 66 |                        |

#### Installation Instructions

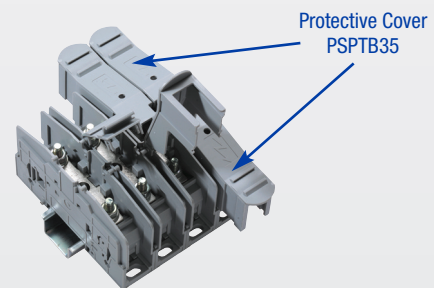
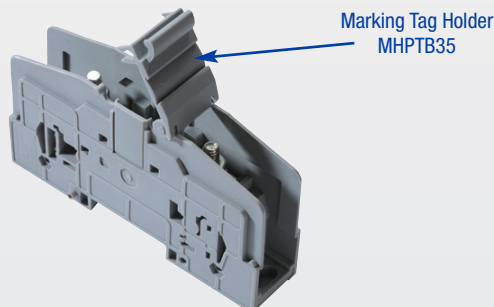
|                       |                      |                      |
|-----------------------|----------------------|----------------------|
| Wire Stripping Length | —                    | —                    |
| Screw / Stud Size     | M6                   | M8                   |
| Screwdriver           | Hex Nut Driver 10 mm | Hex Nut Driver 13 mm |

#### Terminal Blocks

|      | Cat. No.   | Std. Pk. | Cat. No.   | Std. Pk. |
|------|------------|----------|------------|----------|
| Grey | PTB35/50   | 10       | PTB70/95   | 10       |
|      | PTB35/50SH | 10       | PTB70/95SH | 10       |

#### Accessories

|                    | Cat. No.                   | Std. Pk.                      | Cat. No.              | Std. Pk.                         |
|--------------------|----------------------------|-------------------------------|-----------------------|----------------------------------|
| Protective Cover   | PSPTB35                    | 20                            | PSPTB70               | 10                               |
| DIN Rail           | 2511120<br>CA701-15/S      | 20<br>20                      | 2511120<br>CA701-15/S | 20<br>20                         |
| End Stop           | CA102<br>CA202             | 50<br>50                      | CA102<br>CA202        | 50<br>50                         |
| Jumper System      | 2 pole<br>3 pole<br>4 pole | CA703/9<br>CA704/9<br>CA705/9 | 10<br>10<br>10        | CA703/11<br>CA704/11<br>CA705/11 |
| Marking Tag        | MT9                        | 1 Pk. (100 tags)              | MT9                   | 1 Pk. (100 tags)                 |
| Marking Tag Holder | MHPTB35                    |                               | MHPTB35               |                                  |



Fork Type Jumper



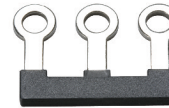
Insulated Fork Type Jumper



Ring Lug Jumper



Insulated Ring Lug Jumper



Internal Jumper



Alternate Jumper for STH4DT Series



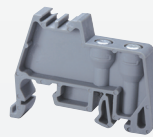
| Terminal Block Series | Poles   | Fork Type Jumper |          | Insulated Fork Type Jumper |          | Ring Lug Jumper |          | Insulated Ring Lug Jumper |          | Internal Jumper |                                  | Alternate Jumper for STH4DT Series |          |
|-----------------------|---------|------------------|----------|----------------------------|----------|-----------------|----------|---------------------------|----------|-----------------|----------------------------------|------------------------------------|----------|
|                       |         | Cat. No.         | Std. Pk. | Cat. No.                   | Std. Pk. | Cat. No.        | Std. Pk. | Cat. No.                  | Std. Pk. | Cat. No.        | Std. Pk.                         | Cat. No.                           | Std. Pk. |
| CBS3U                 | 2 Pole  | CA512/15-2       | 100      | CA514/15-2                 | 100      | CA512/17-2      | 100      | CA514/17-2                | 100      | CA728/2         | 50                               | N/A                                | N/A      |
| CSB3/N3U              | 3 Pole  | CA512/15-3       | 50       | CA514/15-3                 | 50       | CA512/17-3      | 50       | CA514/17-3                | 50       | CA728/3         | 50                               |                                    |          |
| CSB3/N3UL             | 4 Pole  | CA512/15-4       | 50       | CA514/15-4                 | 50       | CA512/17-4      | 50       | CA514/17-4                | 50       | CA728/4         | 50                               |                                    |          |
| STH3                  | 10 Pole |                  |          |                            |          |                 |          |                           |          | CA728/10        | 10                               |                                    |          |
| CBS4U                 | 2 Pole  | CA512/2-2        | 100      | CA514/2-2                  | 100      | CA512/4-2       | 100      | CA514/4-2                 | 100      | CA772/2         | 100                              | N/A                                | N/A      |
| CBS5U                 | 3 Pole  | CA512/2-3        | 50       | CA514/2-3                  | 50       | CA512/4-3       | 50       | CA514/4-3                 | 50       | CA772/3         | 50                               |                                    |          |
| CSB4/N4UL             | 4 Pole  | CA512/2-4        | 50       | CA514/2-4                  | 50       | CA512/4-4       | 50       | CA514/4-4                 | 50       | CA772/4         | 50                               |                                    |          |
| CSB5/N5U              | 10 Pole |                  |          |                            |          |                 |          |                           |          | CA772/10        | 10                               |                                    |          |
| CSTSN4U               | 2 Pole  | CA512/1-2        | 100      | CA514/1-2                  | 100      | CA512/3-2       | 100      | CA514/3-2                 | 100      | N/A             | N/A                              | N/A                                |          |
| CSTSN5U               | 3 Pole  | CA512/1-3        | 50       | CA514/1-3                  | 50       | CA512/3-3       | 50       | CA514/3-3                 | 50       |                 |                                  |                                    |          |
| CSTSN6U               | 4 Pole  | CA512/1-4        | 50       | CA514/1-4                  | 50       | CA512/3-4       | 50       | CA514/3-4                 | 50       |                 |                                  |                                    |          |
| CSTSB4U               | 4 Pole  |                  |          |                            |          |                 |          |                           |          |                 |                                  |                                    |          |
| CSTSB5U               | 4 Pole  |                  |          |                            |          |                 |          |                           |          |                 |                                  |                                    |          |
| CSTSN6U               | 2 Pole  | CA512/7-2        | 100      | CA514/7-2                  | 100      | CA512/8-2       | 100      | CA514/8-2                 | 100      | N/A             | N/A                              | N/A                                |          |
|                       | 3 Pole  | CA512/7-3        | 50       | CA514/7-3                  | 50       | CA512/8-3       | 50       | CA514/8-3                 | 50       |                 |                                  |                                    |          |
|                       | 4 Pole  | CA512/7-4        | 50       | CA514/7-4                  | 50       | CA512/8-4       | 50       | CA514/8-4                 | 50       |                 |                                  |                                    |          |
| STH4                  | 2 Pole  | CA512/13-2       | 100      | CA514/13-2                 | 100      | CA512/14-2      | 100      | CA514/14-2                | 100      | N/A             | CA514/14-3A 10<br>CA514/14-4A 10 |                                    |          |
| STH4DT                | 3 Pole  | CA512/13-3       | 50       | CA514/13-3                 | 50       | CA512/14-3      | 50       | CA514/14-3                | 50       |                 |                                  |                                    |          |
| STH4DTFT              | 4 Pole  | CA512/13-4       | 50       | CA514/13-4                 | 50       | CA512/14-4      | 50       | CA514/14-4                | 50       |                 |                                  |                                    |          |
| STH6                  | 2 Pole  | N/A              |          | N/A                        |          | N/A             |          | N/A                       |          | CA774/2         | 100                              |                                    |          |
|                       | 3 Pole  |                  |          |                            |          |                 |          |                           |          | CA774/3         | 50                               |                                    |          |
|                       | 4 Pole  |                  |          |                            |          |                 |          |                           |          | CA774/4         | 50                               |                                    |          |

END STOPS

CA802



CA707



CA202

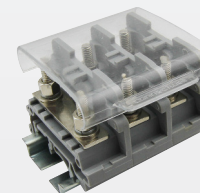


| Cat. No | Dimensions     | Std. Pk. |
|---------|----------------|----------|
| CA802   | 32 x 45 x 8 mm | 50       |

| Cat. No | Dimensions     | Std. Pk. |
|---------|----------------|----------|
| CA702   | 34 x 45 x 9 mm | 50       |

| Cat. No | Dimensions         | Std. Pk. |
|---------|--------------------|----------|
| CA202   | 44.5 x 50 x 9.5 mm | 50       |

ENDPLATES / PROTECTIVE COVERS



For CBS, CSB, CSTS Series

| Terminal Block | Cat. No  | Dimensions         | Std. Pk. |
|----------------|----------|--------------------|----------|
| CBS Series     | EPCBS3U  | 26.2 x 49 x 1.5 mm | 50       |
| CSB Series     |          |                    |          |
| CSTSN Series   | EPCSTSU  | 31 x 50 x 1.5 mm   | 50       |
| CSTSB Series   |          |                    |          |
| STH3           | EPSTH3   | 34 x 47 x 1.5 mm   | 50       |
| STH4           | EPSTH4   | 39.5 x 46 x 1.5 mm | 50       |
| STH6           | EPSTH6   | 51 x 63.5 x 1.5 mm | 50       |
| STH4DT         | EPSTH4DT | 37.5 x 86 x 1.5 mm | 50       |

| Length | Cat. No.  | Std. Pk. |
|--------|-----------|----------|
| 100mm  | CSTSPC1-2 | 10       |
| 200mm  | CSTSPC1-3 | 10       |
| 300mm  | CSTSPC1-4 | 10       |

Компания «Океан Электроники» предлагает заключение долгосрочных отношений при поставках импортных электронных компонентов на взаимовыгодных условиях!

Наши преимущества:

- Поставка оригинальных импортных электронных компонентов напрямую с производств Америки, Европы и Азии, а так же с крупнейших складов мира;
- Широкая линейка поставок активных и пассивных импортных электронных компонентов (более 30 млн. наименований);
- Поставка сложных, дефицитных, либо снятых с производства позиций;
- Оперативные сроки поставки под заказ (от 5 рабочих дней);
- Экспресс доставка в любую точку России;
- Помощь Конструкторского Отдела и консультации квалифицированных инженеров;
- Техническая поддержка проекта, помощь в подборе аналогов, поставка прототипов;
- Поставка электронных компонентов под контролем ВП;
- Система менеджмента качества сертифицирована по Международному стандарту ISO 9001;
- При необходимости вся продукция военного и аэрокосмического назначения проходит испытания и сертификацию в лаборатории (по согласованию с заказчиком);
- Поставка специализированных компонентов военного и аэрокосмического уровня качества (Xilinx, Altera, Analog Devices, Intersil, Interpoint, Microsemi, Actel, Aeroflex, Peregrine, VPT, Syfer, Eurofarad, Texas Instruments, MS Kennedy, Miteq, Cobham, E2V, MA-COM, Hittite, Mini-Circuits, General Dynamics и др.);

Компания «Океан Электроники» является официальным дистрибьютором и эксклюзивным представителем в России одного из крупнейших производителей разъемов военного и аэрокосмического назначения «JONHON», а так же официальным дистрибьютором и эксклюзивным представителем в России производителя высокотехнологичных и надежных решений для передачи СВЧ сигналов «FORSTAR».



## JONHON

«JONHON» (основан в 1970 г.)

Разъемы специального, военного и аэрокосмического назначения:

(Применяются в военной, авиационной, аэрокосмической, морской, железнодорожной, горно- и нефтедобывающей отраслях промышленности)

«FORSTAR» (основан в 1998 г.)

ВЧ соединители, коаксиальные кабели,  
кабельные сборки и микроволновые компоненты:

(Применяются в телекоммуникациях гражданского и специального назначения, в средствах связи, РЛС, а так же военной, авиационной и аэрокосмической отраслях промышленности).



Телефон: 8 (812) 309-75-97 (многоканальный)

Факс: 8 (812) 320-03-32

Электронная почта: [ocean@oceanchips.ru](mailto:ocean@oceanchips.ru)

Web: <http://oceanchips.ru/>

Адрес: 198099, г. Санкт-Петербург, ул. Калинина, д. 2, корп. 4, лит. А