

ChipKIT™WF32™ Board Reference Manual

Revised September 16, 2013

This manual applies to Rev B of the board.

Overview

The chipKIT WF32 is based on the popular Arduino™ open-source hardware prototyping platform and adds the performance of the Microchip PIC32 microcontroller. The WF32 is the first board from Digilent to have a WiFi MRF24 and SD card on the board both with dedicated signals. The WF32 board takes advantage of the powerful PIC32MX695F512L microcontroller. This microcontroller features a 32-bit MIPS processor core running at 80Mhz, 512K of flash program memory, and 128K of SRAM data memory. The WF32 can be programmed using the Multi-Platform Integrated Development Environment (MPIDE), an environment based on the original Arduino IDE, modified to support PIC32. It contains everything needed to start developing embedded applications. The WF32 features a USB serial port interface for connection to the MPIDE and can be powered via USB or by an external power supply. In addition, the WF32 is fully compatible with the advanced Microchip MPLAB® IDE and works with all MPLAB® compatible in-system programmer/debuggers, such as the Microchip PICkit™3 or the Digilent chipKIT PGM. The WF32 is easy to use and suitable for both beginners and advanced users experimenting with electronics and embedded control systems.

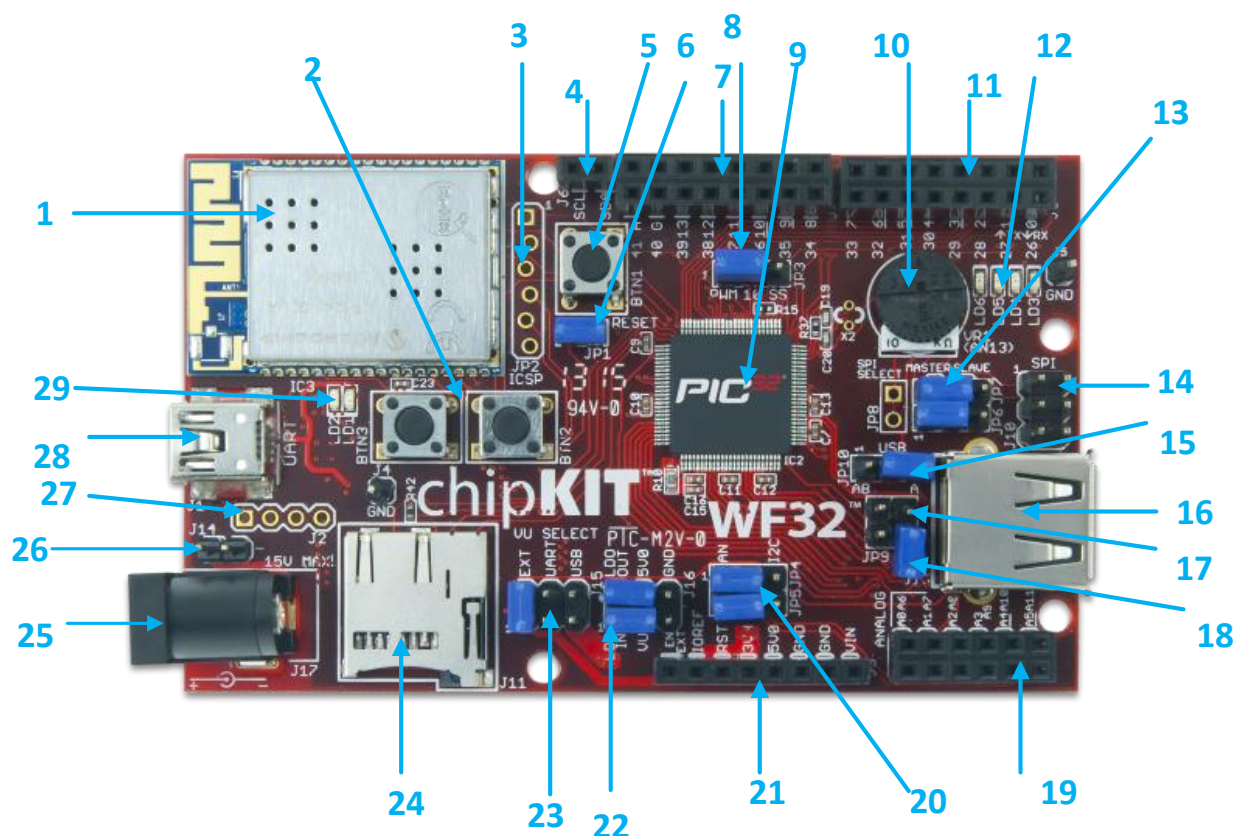


ChipKIT WF32

- Microchip® PIC32MX695F512L microcontroller (80 Mhz 32-bit MIPS, 512K Flash, 128K SRAM)
- Microchip MRF24WG0MA WiFi module
- Micro SD card connector
- USB 2.0 OTG controller with A and micro-AB connectors
- 43 available I/O pins
- four user LEDs
- PC connection uses a USB A > mini B cable (not included)
- 12 analog inputs
- 3.3V operating voltage
- 80Mhz operating frequency
- 7V to 15V input voltage (recommended)
- 30V input voltage (maximum)
- 0V to 3.3V analog input voltage range
- High efficiency, switching 3.3V power supply providing low power operation

1 ChipKIT WF32 Hardware Overview

The WF32 has the following hardware features:



Call Out	Component Description	Call Out	Component Description
1	IC3- Microchip MRF24WG0MA WiFi Module	16	J13- USB Connectors
2	User Buttons	17	JP9- USB Overcurrent Detect
3	JP3- Microchip Debug Tool Connector	18	JP11- Hos USB Bus Power Enable
4	J6- I ² C Signals	19	J8- Analog and Digital Signal Connector
5	BTN1- Reset	20	JP5, JP4- Analog or I ² C Select Jumper
6	JP1- Reset Disable	21	J3- Shield Power Connector
7	J9- Digital Signal Connector	22	J16- 5.0V Supply Select
8	JP3- Pin 10 Signal Select Jumper	23	J15- Power Select Jumper
9	PIC32 Microcontroller	24	J11- Micro SD Connector
10	Potentiometer	25	J17- External Power Connector

11	J7- Digital Signal Connector	26	J14- External Power Connector
12	User LEDs	27	J2- USB- UART Handshaking Signals
13	JP6,7- SPI Master/ SPI Slave Select	28	USB connector for USB Serial Converter
14	J10- SPI Connector	29	Serial Communication LEDs
15	JP10- USB Host or OTG Select		

2 MPIDE and USB Serial Communications

The WF32 board is designed to be used with the Multi-Platform IDE (MPIDE), the MPIDE development platform was created by modifying the Arduino™ IDE. It is backwards-compatible with the Arduino IDE. Links for where to obtain the MPIDE installation files and instructions for installing MPIDE can be found at www.chipkit.net/started.

The MPIDE uses a serial communications port to communicate with a boot loader running on the WF32 board. The serial port on the WF32 board is implemented using an FTDI FT232RQ USB serial converter. Before attempting to use the MPIDE to communicate with the WF32, the appropriate USB device driver must be installed.

The WF32 board uses a standard mini-USB connector. Generally, a USB A to mini-B cable is used for connection to a USB port on the PC.

When the MPIDE needs to communicate with the WF32 board, the board is reset and starts running the boot loader. The MPIDE then establishes communications with the boot loader and uploads the program to the board.

When the MPIDE opens the serial communications connection on the PC, the DTR pin on the FT232RQ chip is driven low. This pin is coupled through a capacitor to the MCLR pin on the PIC32 microcontroller. Driving the MCLR line low resets the microcontroller, which restarts the execution with the boot loader.

This automatic reset action (when the serial communications connection is opened) can be disabled. To disable this operation, there is a jumper labeled JP1, which can be disconnected. JP1 is normally shorted, but if the shorting block is removed, the automatic reset operation will be disabled.

Two red LEDs (LD1 and LD2) will blink when data is being sent or received between the WF32 and the PC over the serial connection.

The header connector J2 provides access to the other serial handshaking signals provided by the FT232RQ. Connector J2 is not loaded at the factory and can be installed by the user to access these signals.

3 Power Supply

The WF32 is designed to be powered via USB (J1), from an external power supply (J14 or J17), or from the USB OTG receptacle (J12). Jumper block J15 is used to select which power supply is used. The power supply voltage selected by J15 is applied to the unregulated power bus, VU.

In order to operate the WF32 as a USB device powered from the USB serial interface, connector J1, place a shorting block in the UART position of jumper block J15. To operate the WF32 from an external power supply,

attach the power supply to either J14 or J17 and place a shorting block in the EXT position of J15. Be sure to observe correct polarity when connecting a power supply to J14, as a reversed connection could damage the board. To operate the WF32 as a USB powered device from the USB OTG connector (J12) place a shorting block on the USB position of J15. This will normally only be done when running a sketch on the board that programs it to operate as a USB device. The power supply section in the WF32 provides two voltage regulators, a 3.3V regulator and a 5V regulator. All systems on the WF32 board itself operate at 3.3V and are powered by the 3.3V regulator. The 5V regulator is used to provide power for external circuits, such as shields, that require 5V for operation. The 5V regulator can be completely disabled if it is not needed for a given application.

The WF32 board is designed for low power operation and efficient use of battery power, as such a switch mode voltage regulator is used for the 3.3V power supply. This switch mode regulator is made up of a Microchip MCP16301 and associated circuitry. It can operate on input voltages from 4V to 30V with up to 96% efficiency, and is rated for 600mA total current output. The MCP16301 has internal short circuit protection and thermal protection. The 3.3V regulator takes its input from the unregulated power bus, VU, and produces its output on the VCC3V3 power bus. The VCC3V3 bus provides power to all on-board systems and is available at the shield power connector (J3) to provide 3.3V power to external circuitry, such as shields.

The 5V regulator section provides a low dropout linear regulator. No circuitry on the WF32 board uses the 5V supply. It is provided for powering external circuitry that needs a 5V power supply. This voltage regulator uses an On Semiconductor NCP1117LP. The NCP1117LP is rated for an output current of 1A. The dropout voltage of the NCP1117LP is a maximum of 1.4V at 1A output current. The maximum input voltage of the NCP1117LP is 18V. The recommended maximum operating voltage is 15V.

The input voltage to the 5V regulator section is taken from the VU bus, and the output is placed on the VCC5V0 power bus.

There is a reverse polarity protection diode in the external power supply circuit. Considering the diode drop plus the forward drop across the regulator, the minimum input voltage to the regulator should be 7V to produce a reliable 5V output.

For input voltages above 9V, the regulator will get extremely hot when drawing high currents. The NCP1117LP has output short circuit protection and internal thermal protection and will shut down automatically to prevent damage.

The 5V regulator section actually provides four 5V power options:

- 1) 5V regulator completely disabled and no 5V power available;
- 2) 5V regulator bypassed and 5V provided from an external 5V power supply, such as USB;
- 3) on-board 5V regulator used to provide 5V power;
- 4) External 5V regulator used to regulate VU and provide 5V power.

Jumper block J16 is used to select these various options and the following diagrams describe the use of J16:

This diagram shows the arrangement of the signals on J16:

LDO In ☐ ☐ LDO Out
VU ☐ ☐ 5V0
EN Ext ☐ ☐ GND

LDO In is the input to the on-board linear regulator.

LDO Out is the output of the on-board linear regulator

VU is the unregulated input voltage selected by the jumper setting jumper block J15.

5V0 is the connection to the VCC5V0 power bus on the WF32 board.

EN Ext is a signal provided to enable an external voltage regulator if one is being used. This would allow the sketch running on the WF32 to turn on/off the external voltage regulator. When used with an external voltage regulator, this allows the board to go into an extremely low power operating mode. This signal is connected to Port D, bit 13 (RD13) on the PIC32 microcontroller. This is accessible using digital pin 64.

GND is a connection to the digital ground bus on the WF32 board.

To completely disable operation of the on-board linear regulator, remove all shorting blocks from J16.

To use the on-board 5V regulator, use the provided shorting blocks to connect VU to LDO In, and to connect LDO Out to 5V0, as follows:



Note: In this case, when J15 is in the EXT position, and J16 is jumpered to regulate the external input, do not apply more than 18V. This can destroy the 5.0V regulator.

To bypass the on-board 5V regulator when powering the board from an externally regulated 5V power supply, such as USB, Use one of the provided shorting blocks to connect VU to 5V0, as follows:



An external 5V regulator can be used. This would be desirable, for example, when operating from batteries. An external switch mode 5V regulator could be used to provide higher power efficiency than the on-board linear regulator. In this case, use wires as appropriate to connect VU to the unregulated input of the external regulator. Connect the regulated 5V output to 5V0. Connect GND to the ground connection of the external regulator. Optionally, connect EN Ext to the enable input control of the external regulator, if available. This allows the external regulator to be turned off for low power operation. Digital pin 64 is then used to turn on/off the external regulator.

The PIC32MX695 microcontroller is rated to use a maximum of 98mA of current when operating at 80Mhz. The MRF24WG0MA WiFi module typically consumes a maximum of 237mA when transmitting. This allows approximately 265mA of current to power the remaining 3.3V circuitry on the WF32 board and external circuitry

powered from the VCC3V3 bus. No circuitry on the WF32 board is powered from the VCC5V0 power bus, leaving all current available from the 5V regulator to power external circuitry.

The POWER connector (J3) is used to power shields connected to the WF32 board. Pin 1 is unconnected, the following pins are provided on this connector:

IOREF (pin 2): This pin is tied to the VCC3V3 bus.

P32_RST (pin 3): This connects to the MCLR pin on the PIC32 microcontroller and can be used to reset the PIC32.

VCC3V3 (pin 4): This routes the 3.3V power bus to shields.

VCC5V0 (pin 5): This routes the 5V power bus to shields.

GND (pin 6, 7): This provides a common ground connection between the WF32 and the shields. This common ground is also accessible on connectors J4 and J5.

VEXT (pin 8): This connects to the voltage provided at the external power supply connectors (J14 and J17). This can be used to provide unregulated input power to the shield. It can also be used to power the WF32 board from the shield instead of from the external power connector.

4 5V Compatibility

The PIC32 microcontroller operates at 3.3V. The original Arduino boards operate at 5V, as do many Arduino shields.

There are two issues to consider when dealing with 5V compatibility for 3.3V logic. The first is protection of 3.3V inputs from damage caused by 5V signals. The second is whether the 3.3V output is high enough to be recognized as a logic high value by a 5V input.

The digital I/O pins on the PIC32 microcontroller are 5V tolerant. The analog capable I/O pins are not 5V tolerant. To provide 5V tolerance on those pins, the WF32 contains clamp diodes and current limiting resistors to protect them from 5V input voltages.

The fact that all I/O pins are 5V tolerant means that it is safe to apply 5V logic levels to any pins on the board without risk of damaging the PIC32 microcontroller.

The minimum high-voltage output of the PIC32 microcontroller is rated at 2.4V when sourcing 12mA of current. When driving a high impedance input (typical of CMOS logic) the output high voltage will be close to 3.3V. Some 5V devices will recognize this voltage as a logic high input, and some won't. Many 5V logic devices will work reliably with 3.3V inputs.

5 Input/ Output Connections

The WF32 board provides 43 of the I/O pins from the PIC32 microcontroller at pins on the input/output connectors J6, J7, J8, J9, and J10.

The PIC32 microcontroller can source or sink a maximum of 25mA on all digital I/O pins. However, to keep the output voltage within the specified output voltage range (V_{OL} 0.4V, V_{OH} 2.4V) the pin current must be restricted to +7/-12mA. The maximum current that can be sourced or sunk across all I/O pins simultaneously is +/-200mA. The maximum voltage that can be applied to any I/O pin is 5.5V although not all pins are 5V tolerant. For more detailed specifications, refer to the PIC32MX5XX/6XX/7XX Data Sheet available from www.microchip.com.

Note that the series resistors that are part of the voltage clamp circuit to provide 5V tolerance on the analog capable I/O pins, limiting the current that can be sourced or sunk by those pins. These resistors add 200 ohms of resistance to the input/output circuit and limit the effective drive current to about 1mA-2mA source/sink capability on the analog capable pins.

Connectors J7 and J9 are 2x8 female pin header connectors that provide digital I/O signals. The outer row of pins (closer to the board edge) corresponds to the I/O connector pins on an Arduino Uno or Duemilanove board. The inner row of pins provides access to the extra I/O signals provided by the PIC32 microcontroller.

Connector J8 is a 2x6 female pin header connector that provides access to the analog input pins on the microcontroller. The outer row of pins corresponds to the six analog pins on an Arduino Uno or Duemilanove. The inner row of pins is for the additional I/O signals provided by the PIC32 microcontroller. The analog pins on J8 can also be used as digital I/O pins.

The chipKIT/Arduino system uses logical pin numbers to identify digital I/O pins on the connectors. The logical pin numbers for the I/O pins on the WF32 are 0-48. These pin numbers are labeled in the silk screen on the board.

Pin numbers 0-13 are the outer row of pins on J9 and J7, from right to left. Pin numbers 14-19 are the outer row of pins on J8 from left to right. Pins 20-25 are the inner row of pins on J8 from left to right. Pin numbers 26-41 are the inner row of pins on J9 and J7 from right to left. Pin 42 is the pin labeled A on J7. This pin is normally the reference voltage for the microcontroller's A/D converter, but can also be used as a digital I/O pin.

In addition to the connector pin, Pin 13 also connects to the user LED LD3. Pin 43 connects to user LED LD5. Pin 43 does not attach to any connector. Pin 44 is the SS signal for SPI port 2, and discussed more in the SPI section below. Pins 45 and 46 are intended to be used for I²C and are connected to the 2x1 female header connector, J6. Pins 47 and 48 connect to the user LEDs LD5 and LD6.

The analog inputs on connector J8 are assigned pin numbers. The outer row of pins on J8 is analog inputs A0-A5. The inner row of pins is A6-A11. These pins are also assigned digital pin numbers; A0-A5 are digital pins 14-19, and A6-A11 are 20-25.

6 802.11b/g Interface

The 802.11b/g compatible WiFi interface on the WF32 is provided by a Microchip MRF24WG0MA WiFi module. This module provides the radio transceiver, antenna, and 802.11 compatible network firmware.

The MRF24WG0MA firmware provides the 802.11 network protocol software support. The DNETcK and DWIFICK libraries provide the TCP/IP network protocol support that works with the 802.11 protocol support provided by the WiFi module.

The primary communications interface with the MRF24WG0MA WiFi module is a 4 wire SPI bus. This SPI bus uses SPI4 in the PIC32 microcontroller, and this SPI controller is dedicated to use for communications with the WiFi module

The WiFi module supports SPI clock speeds up to 25MHz. In addition to the SPI interface, the interface to the WiFi module also includes a reset signal, an interrupt signal and a hibernate signal. The active low RESET signal is used to reset the WiFi module. The external interrupt signal, INT, is used by the module to signal to the host microcontroller that it needs servicing by the microcontroller software. The INT signal on the WiFi module is connected to external interrupt INT4 on the PIC32 microcontroller. The active low HIBERNATE signal is used to power the WiFi module down and put it into a low power state.

The interface signals to the WiFi module are controlled by the network libraries and are not normally accessed by the user sketch. Refer to the schematic for the WF32 board for details on these connections.

More detailed information about the operation of the MRF24WG0MA can be obtained from the manufacturer data sheet available from www.microchip.com.

7 Network Library Software

The WiFi module on the WF32 is intended for use with the Digilent chipKIT network libraries DNETcK and DWIFlck. The DNETcK library provides TCP/IP protocol support for all chipKIT compatible network interfaces supported by Digilent products, including the WF32. The DWIFlck library provides the additional library support required for connecting to and operating with the Microchip MRF24WG0MA wireless network modules.

The DWIFlck library supports both the MRF24WB0MA and MRF24WG0MA modules. The correct header file must be used to specify the network hardware being used by the sketch. When writing a network sketch on the WF32, use the following hardware library:

```
#include <WiFiShieldOrPmodWiFi_G.h>
```

The Digilent chipKIT network libraries are available for download from the Digilent web site: www.digilentinc.com. These libraries make use of a custom version of the Microchip Application Library. It is necessary to accept the Microchip Application Library license agreement before downloading the library.

There are reference examples demonstrating the use of these libraries in the library download. There are more extensive examples available on the Digilent web site as well.

8 USB Interface

The PIC32MX695 microcontroller on the WF32 contains a USB 2.0 Compliant, Full Speed Device and On-The-Go (OTG) controller. This controller provides the following features:

- USB full speed host and device support.
- Low speed host support.
- USB OTG support.
- Endpoint buffering anywhere in system RAM.
- Integrated DMA to access system RAM and Flash memory.

Connector J13 on the top right side of the board is a standard USB type A receptacle. This connector will be used when the WF32 has been programmed to operate as a USB embedded host. The USB device is connected either directly to the WF32, or via cable to this connector.

Connector J12, on the bottom right side of the board is the Device/OTG connector. This is a standard USB micro-AB connector. Connect a cable with a micro-A plug (optionally available from Digilent) from this connector to an available USB port on a PC or USB hub for device operation.

The USB specification allows for two types of devices with regard to how they are powered: self-powered devices and bus powered devices. A self-powered device is one that is powered from a separate power supply and does not draw power from the USB bus. A bus powered device is one that draws power from the USB bus and does not have a separate power supply.

The WF32 can be operated as a self-powered device or as a bus powered device from either the USB serial connector (J1) or the USB OTG/device connector (J12). As described in the power supply section above, jumper block (J15) is used to select the power source to be used to power the board.

For operation as a self-powered device, place a shorting block on the EXT position of J15 and connect a suitable external power supply to either J14 or J17.

To operate the WF32 as a bus powered device powered from the USB serial connector (J1), place a shorting block in the UART position of J15. To operate as a bus powered device powered from the OTG/device connector (J12), place a shorting block in the USB position of J15.

Note that there are two completely independent USB interfaces on the WF32 board, and it is possible for the WF32 to appear as two different USB devices at the same time. These two devices can be connected to two different USB ports on the same host, or to USB ports on two different hosts. If the WF32 board is connected to two different USB hosts simultaneously, there will be a common ground connection between these two hosts through the WF32 board. In this case, it is possible for ground current to flow through the WF32 board, possibly damaging one or the other USB host if they do not share a common earth ground connection.

When the WF32 is operating as a bus powered device using USB connector J1, it will appear as a self-powered device from the perspective of a USB host connected to J12. Similarly when operating as a bus powered device from connector J12, it will appear as a self-powered device from the perspective of connector J1.

A USB host is expected to be able to provide bus power to USB devices connected to it. Therefore, when operating as a USB host, the WF32 should normally be externally powered. Connect a power supply to the external power connector, J17. It is possible to operate the WF32 as a USB host powered from USB connector J1, however in this case, the host USB port will be providing power for the WF32 as well as the USB device connected to the WF32. In this case, ensure that the total load does not exceed the 500mA maximum load that a USB device is allowed to present to the host.

The USB host provides regulated 5V power to the connected USB device. The internal 5V LDO regulator can be used to provide the USB power when operating from an external power supply. Place shorting blocks on jumper block J16 as described above in the power supply section.

If the external power supply being used is a regulated 5V supply, place a shorting block between pins VU and 5V0 on connector J16 as described above in the power supply section.

The power supply used must be able to supply enough current to power both the WF32, and the attached USB device, since the WF32 provides power to the attached USB device when operating as a host. The USB 2.0 specification requires that the host provide at least 100mA to the device.

Jumper JP10 is used to route power to the host connector being used. Place the shorting block in the “A” position when using the standard USB type A (host) Connector (J13). Place the shorting block in the “AB” position for use with the USB micro-AB (OTG) connector (J12).

When operating as a USB host, the PIC32MX695 microcontroller controls application of power to the connected device via the VBUSON control pin (labeled VBUSON in the schematic). Bus power is applied to the USB bus by driving the VBUSON pin high. Power is removed from the bus by driving the VBUSON pin low. The VBUSON pin is accessed via bit 3 of the U1OTGCON register. The VBUSON signal is shared with same microcontroller pin as analog input A. When operating as a USB host, this pin is not available as an analog input or general purpose I/O pin.

The VBUSON pin drives the enable input of a TPS2051B Current-Limited Power Distribution Switch to control the application of USB power to the host connector. This switch has over-current detection capability and provides an over-current fault indication by pulling the signal USBOC low. The over-current output pin can be monitored via the INT3/RA14 pin on the PIC32MX695 microcontroller. This signal appears on connector J7, pin 1 on the board, and is chipKIT digital pin 8. Details about the operation of the TPS2051B can be obtained from the data sheet available at www.ti.com.

Both the VBUSON and the INT3/RA14 signals connect to the TPS2051B through jumpers JP11, and JP9, respectively. When operating as a USB host, both jumpers should be shorted with shorting blocks. Pin A7 will be unusable as an analog input and will be driven as an output. To monitor the over-current output pin of the TPS2051B, use the `attachInterrupt()` function to set INT3/RA14 (pin 8) as an external interrupt.

The PIC32 USB controller can be accessed using the chipKIT USB libraries for use within the MPIDE environment.

When using the WF32 outside the MPIDE environment, the Microchip Application Library provides USB stack code that can be used with the board. There are reference designs available on the Microchip web site demonstrating both device and host operation of PIC32 microcontrollers. These reference designs are suitable to use for developing USB firmware for the WF32 Shield.

9 SD Card Interface

The micro-SD card connector provides the ability to access data stored on micro-SD sized flash memory cards using the SD card library provided as part of the MPIDE software system.

The SD card is accessed using an SPI interface on PIC32 microcontroller pins dedicated to this purpose. The SD library uses a 'bit-banged' software SPI implementation to talk to SD cards.

On the WF32 board, the I/O pins used to communicate with the SD card are dedicated to that function and not shared with other uses.

10 Peripheral I/O Functions

The PIC32 microcontroller on the WF32 board provides a number of peripheral functions. The following peripherals are provided:

10.1 UART Ports

UART 1: Asynchronous serial port. Pin 0 (RX), Pin 1 (TX). This is accessed using the runtime object: `Serial`. These pins are connected to I/O connector J9 and are also connected to the FT232RQ USB serial converter. It is possible to use these pins to connect to an external serial device when not using the USB serial interface. This uses UART1 (U1RX, U1TX) on the PIC32 microcontroller.

UART 4: Asynchronous serial port. Pin 39 (RX), Pin 40 (TX). This is accessed using the runtime object: `Serial1`. This uses UART4 (U24X, U4TX) on the PIC32 microcontroller.

10.3 SPI

Synchronous serial port. Pin 10 (SS), Pin 11 (MOSI), Pin 12 (MISO), Pin 13 (SCK). This can be accessed using the SPI standard library. It can also be accessed using the DSPI0 object from the DSPI standard library. This uses SPI2 (SS2, SDI2, SDO2, SCK2) on the PIC32 microcontroller. These signals also appear on connector J10.

Jumpers JP6 and JP7 are used to select whether the WF32 operates as a Master (transmit on MOSI, receive on MISO) or a Slave (transmit on MISO, receive on MOSI) device. The shorting blocks on JP6 and JP7 are normally placed in the Master position for the WF32 to function as an SPI master.

Jumper JP3 is used to select PWM output or the SPI SS function on Pin 10. The shorting block on JP3 should be in the PWM position to select PWM output. It should be in the SS position to select the SPI SS function. JP4 will normally be in the PWM position. In general, the only time it needs to be in the SS position is when the WF32 board is being used as an SPI slave device.

SPI1: Synchronous serial port. This is an additional SPI interface on the PIC32 microcontroller that can be assessed using the DSPI1 object from the DSPI standard library. It is not accessible using the SPI standard library. Several of the SPI1 signals are shared in various ways with other peripheral functions. SS1 is connected to connector J9, pin 15, the connector location for digital pin 7, via a 1K ohm resistor. This signal is accessed via digital pin number 71. SDO1 is accessed via digital pin 3. This conflicts with one of the PWM outputs accessed using analogWrite(). SDI1 is accessed via digital pin 38. SCK1 is connected to connector J7, pin 1, the connector location for digital pin 8, via a 1K ohm resistor. This conflicts with external interrupt INT3. This signal can be accessed via digital pin number 72.

SPI3: Synchronous serial port. This is an additional SPI interface on the PIC32 microcontroller that can be accessed using the DSPI2 object from the DSPI standard library. It is not accessible using the SPI standard library. Pin 39 (SS3), pin 1 (SDO3), pin 0 (SDI1), and pin 40 (SCK3). Note that pins 0 and 1 conflict with UART1: object class Serial. Pins 39 and 40 conflict with UART4: Serial1 object class.

SPI4: Synchronous serial port. This port is dedicated for access to the MR24WG0MA WiFi module and is normally only used by the networking libraries. This can be accessed using the DSPI3 object class from the DSPI standard library, but this is not recommended for normal operation of the board.

10.4 I²C

Synchronous serial interface. The PIC32 microcontroller shares analog pins A4 and A5 with the two I²C signals SDA and SCL. Jumpers JP4 and JP5 are used to select whether the analog pin functions or the I²C pin functions are being used. The shorting blocks are placed in the AN position to select the analog input function or general digital I/O. They are placed in the I2C position to use the pins for I²C operation. This uses I2C2 (SDA2, SCL2) on the PIC32 microcontroller. Both SDA2 and SCL2 are accessible on connector J6.

Note: The I²C bus uses open collector drivers to allow multiple devices to drive the bus signals. This means that pull-up resistors must be provided to supply the logic high state for the signals. These pull-up resistors are labeled R18 and R19 on the WF32 board, but they require that chipKIT pin numbers 62 and 63 are driven to a logic high ('1') level.

10.5 PWM

Pulse width modulated output; Pins 3 (OC1), 5 (OC2), 6 (OC3), 9 (OC4), and 10 (OC5). These can be accessed using the analogWrite() runtime function.

10.6 External Interrupts

Pin 3 (INT0), Pin 2 (INT1), Pin 7 (INT2), Pin 8 (INT3), Pin 57 (INT4). Note that the pin numbers for INT0 and INT4 are different than on some other chipKIT boards. INT4 is dedicated for use with the MRF24WG0MA WiFi module and is not brought out to a connector pin.

10.7 User LEDs

Pin 13 (LD6), Pin 43 (LD5), Pin 47 (LD4), Pin 48 (LD3). Pin 13 is shared between a connector pin and the LED. Pin 43, 48, and 47 only goes to the LED and not to any connector pin. Driving the pin HIGH turns the LED on, driving it LOW turns it off.

10.8 User Push Buttons

There are two push button switches labeled BTN2 (pin 65), and BTN3 (pin 66). The `digitalRead()` function will return LOW if the button is not pressed and HIGH when the button is pressed.

10.9 A/D Converter Reference

Labeled A, the left-most outer pin on connector J5. This is used to provide an external voltage reference to determine the input voltage range of the analog pins. The maximum voltage that can be applied to this pin is 3.3V. This pin can also be used as digital pin 42.

10.10 Potentiometer

A potentiometer (pot) is provided on the board to be used as an analog signal source or analog control input. The pot is a 10Kohm trimmer pot connected between the VCC3V3 supply and ground. The wiper of the pot is connected to analog input A13. The pot is read using the `analogRead()` function.

10.11 RTCC

Real Time Clock Calendar. The PIC32 microcontroller contains an RTCC circuit that can be used to maintain time and date information. The operation of the RTCC requires a 32.768Khz frequency source. Crystal X2 (not loaded), just above and to the right of the PIC32 microcontroller IC, is provided for you to solder a 32Khz watch crystal. The Citizen CFS206-32.768KDZF-UB crystal can be used in this location.

10.12 RESET

The PIC32 microcontroller is reset by bringing its MCLR pin low. The MCLR pin is connected to the P32_RST net on the circuit board.

As described earlier, reset of the PIC32 microcontroller can be initiated by the USB serial converter. The USB serial converter brings the DTR pin low to reset the microcontroller. Jumper JP1 can be used to enable/disable the ability for the USB serial converter to initiate a reset.

The P32_RST net is connected to pin 3 of connector J3. This allows circuitry on a shield to reset the microcontroller, or to ensure that the circuitry on the shield is reset at the same time as the microcontroller.

Connector J10 provides access to the SPI bus. Pin 5 provides access to the SPI Slave Select signal (SS).

On Arduino boards, the corresponding connector is also used as an in-system programming connector as well as providing access to some of the SPI signals. On Arduino boards, pin 5 of this connector is connected to the reset net.

Some Arduino shields, most notably the Ethernet shield, connect pin 5 to the reset net on pin 3 of connector J3. This causes the processor to be reset each time an attempt is made to access the SPI port. Jumper JP8 can be used to break the connection between J10 pin 5 and reset when using Arduino shields that make this connection. JP8 has a cut-able trace on the top of the board that can be cut to break the connection between SPI SS and reset. JP8 is not loaded at the factory. To restore the connection, solder a two pin header at the JP8 position and install a shorting block.

A reset button is located to the right of the MRF24WG0MA WiFi module. Pressing this button resets the PIC32 microcontroller.

11 Microchip Development Tool Compatibility

In addition to being used with the MPIDE, the WF32 board can be used as a more traditional microcontroller development board using Microchip Development Tools.

Unloaded connector JP2 on the right side of the MRF24WG0MA WiFi module is used to connect to a Microchip development tool, such as the PICkit™3. The holes for JP2 are staggered so that a standard 100-mil spaced 6-pin header can fit to the board without the need to solder it in place. Any Microchip development tool that supports the PIC32 microcontroller family, and that can be connected via the same 6-pin ICSP interface as the PICkit™3, can be used.

Typically, a standard male connector and a 6-pin cable is used with JP2 so that a PICkit™3 can be attached to the WF32 board.

The Digilent chipKIT PGM can also be used in place of a PICkit3 to program the WF32 with the Microchip Development tools. The chipKIT PGM has a smaller form factor and does not need a 6-pin cable to connect to JP2.

The Microchip MPLAB® IDE or the MPLAB® X IDE can be used to program and debug code running on the WF32 board. These programs can be downloaded from the Microchip web site.

Using the Microchip development tools to program the WF32 board will cause the boot loader to be erased. To use the board with the MPIDE again, it is necessary to program the boot loader back onto the board. The boot loader source code and compiled image can be found at www.chipKIT.net.

12 Pinout Tables

The following tables show the relationship between the chipKIT digital pin numbers, the connector pin numbers and the microcontroller pin numbers.

In the following tables, columns labeled chipKIT pin # refer to the digital pin number. This is the value that is passed to the pinMode(), digitalWrite(), and other functions to refer to the pin.

For most pins, this pin number will agree with the pin number labeled on the board. For the pins whose function can be switched using jumpers, the pin number labeled on the board is correct when the jumper is in the “normal” position.

For example: The normal position for JP3 is the PWM position. The digital pin number for the microcontroller signal PWM is 10. With JP3 in the PWM position, digital pin 10 is connected to the pin labeled 10 on the board. The

alternate position for JP3 is the SS position. The digital pin number for the microcontroller signal SS is 44. With JP3 in the SS position, digital pin 44 is connected to the pin labeled 10 on the board, and digital pin 10 is not connected.

The pin labeled 10 on the board is connected to connector J7 pin 5. This is shown as J5-05 in the following tables. In the 'Pinout Table by Shield Connector Pin' table below, J5-05 is shown as being either chipKIT pin # 10 or 44. J5-04 is connected to chipKIT pin # 10 when JP3 is in the PWM position and is connected to chipKIT pin # 44 when in the SS position.

Pinout Table by ChipKIT Pin Number

ChipKIT Pin #	MCU Pin	Port Bit	PIC32 Signal Name	Function
0	52	RF02	SDA3/SDI3/U1RX/RF2	GPIO, UART
1	53	RF08	SCL3/SDO3/U1TX/RF8	GPIO, UART
2	18	RE08	AERXD0/INT1/RE8	GPIO, external INT
3	72	RD00	SDO1/OC1/INT0/RD0	PWM 1
4	88	RF01	ETXD0/PMD10/RF1	GPIO
5	76	RD01	OC2/RD1	PWM 2
6	77	RD02	OC3/RD2	PWM 3
7	19	RE09	AERXD1/INT2/RE9	GPIO, external INT, USB OC INT
8	66	RA14	AETXCLK/SCL1/INT3/RA14	GPIO, external INT (shared with P32_USBOC)
9	78	RD03	OC4/RD3	PWM 4
10	81	RD04	OC5/PMWR/CN13/RD4	PWM 5 (JPR to digital pin 10 position)
11	12	RG08	ERXDV/AERXDV/ECRS DV/AECRS DV/SCL4/SDO2/U3TX/PMA3/CN10/RG8	SPI_SDO
12	11	RG07	ECRS/SDA4/SDI2/U3RX/PMA4/CN9/RG7	SPI_SDI
13	10	RG06	ECOL/SCK2/U6TX/U3RTS/PMA5/CN8/RG6	SPI_SCK, User LED LD6
14/A0	23	RB02	AN2/C2IN-/CN4/RB2	AIN0, GPIO
15/A1	21	RB04	AN4/C1IN-/CN6/RB4	AIN1, GPIO
16/A2	32	RB08	AN8/C1OUT/RB8	AIN2, GPIO
17/A3	25	RB00	PGED1/AN0/CN2/RB0	AIN3, GPIO
18/A4	34	RB10	AN10/CVrefout/PMA13/RB10	AIN4, GPIO
19/A5	35	RB11	AN11/ERXERR/AETXERR/PMA12/RB11	AIN5, GPIO
20/A6	22	RB03	AN3/C2IN+/CN5/RB3	AIN6, GPIO
21/A7	20	RB05	AN5/C1IN+/VBUSON/CN7/RB5	AIN7, P32_VBUSON
22/A8	33	RB09	AN9/C2OUT/RB9	AIN8, GPIO
23/A9	24	RB01	PGEC1/AN1/CN3/RB1	AIN9, GPIO

24/A10	43	RB14	AN14/ERXD2/AETXD3/PMALH/PMA1/RB14	AIN10, GPIO
25/A11	44	RB15	AN15/ERXD3/AETXD2/OCFB/PMALL/PMA0/CN12/RB15	AIN11, GPIO
26	93	RE00	PMD0/RE0	GPIO
27	94	RE01	PMD1/RE1	GPIO
28	98	RE02	PMD2/RE2	GPIO
29	99	RE03	PMD3/RE3	GPIO
30	100	RE04	PMD4/RE4	GPIO
31	3	RE05	PMD5/RE5	GPIO
32	4	RE06	PMD6/RE6	GPIO
33	5	RE07	PMD7/RE7	GPIO
34	82	RD05	PMRD/CN14/RD5	GPIO
35	71	RD11	EMDC/AEMDC/IC4/PMCS1/PMA14/RD11	GPIO
36	83	RD06	ETXEN/PMD14/CN15/RD6	GPIO
37	84	RD07	ETXCLK/PMD15/CN16/RD7	GPIO
38	9	RC04	T5CK/SDI1/RC4	GPIO
39	47	RD14	AETXD0/SS3/U4RX/U1CTS/CN20/RD14	GPIO, UART
40	48	RD15	AETXD1/SCK3/U4TX/U1RTS/CN21/RD15	GPIO, UART
41	28	RA09	Vref-/CVref-/AERXD2/PMA7/RA9	GPIO, VREF-
42	29	RA10	Vref+/CVref+/AERXD3/PMA6/RA10	VREF+
43	87	RF00	ETXD1/PMD11/RF0	User LED LD5
44	14	RG09	ERXCLK/AERXCLK/EREFCLK/AEREFCLK/SS2/U6RX/U3CTS/PMA2/CN11/RG9	SPI_SS (JPR to digital pin 10 position)
45	58	RA02	SCL2/RA2	I2C, wire (jumper to A5)
46	59	RA03	SDA2/RA3	I2C, wire (jumper to A4)
47	17	RA00	TMS/RA0	User LED LD3
48	38	RA01	TCK/RA1	User LED LD4
49	1	RG15	AERXERR/RG15	SD Card
50	95	RG14	TRD2/RG14	SD Card
51	96	RG12	TRD1/RG12	SD Card
52	97	RG13	TRD0/RG13	SD Card
53	39	RF13	SCK4/U5TX/U2RTS/RF13	MRF24 SPI
54	40	RF12	SS4/U5RX/U2CTS/RF12	MRF24 SPI
55	49	RF04	SDA5/SDI4/U2RX/PMA9/CN17/RF4	MRF24 SPI
56	50	RF05	SCL5/SDO4/U2TX/PMA8/CN18/RF5	MRF24 SPI
57	67	RA15	AETXEN/SDA1/INT4/RA15	MRF24 INT
58	89	RG01	ETXERR/PMD9/RG1	MRF24 HIBERNATE

59	90	RG00	PMD8/RG0	MRF24 RESET
60	41	RB12	AN12/ERXD0/AECRS/PMA11/RB12	power supply input voltage monitor
61	42	RB13	AN13/ERXD1/AECOL/PMA10/RB13	
62	60	RA04	TDI/RA4	I2C Pullup (SDA)
63	61	RA05	TDO/RA5	I2C Pullup (SCL)
64	80	RD13	ETXD3/PMD13/CN19/RD13	5V Power Enable
65	91	RA06	TRCLK/RA6	BTN1
66	92	RA07	TRD3/RA7	BTN2
67	6	RC01	T2CK/RC1	(shared with digital pin 34)
68	7	RC02	T3CK/RC2	(shared with digital pin 35)
69	8	RC03	T4CK/RC3	(shared with digital pin 36)
70	68	RD08	RTCC/EMDIO/AEMDIO/IC1/RD8	(shared with digital pin 2)
71	69	RD09	SS1/IC2/RD9	(shared with digital pin 7)
72	70	RD10	SCK1/IC3/PMCS2/PMA15/RD10	(shared with digital pin 8)
73	79	RD12	ETXD2/IC5/PMD12/RD12	(shared with digital pin 10)
N/A	26	RB06	PGEC2/AN6/OCFA/RB6	ICSP
N/A	27	RB07	PGED2/AN7/RB7	ICSP
N/A	63	RC12	OSC1/CLKI/RC12	XTAL
N/A	73	RC13	SOSCI/CN1/RC13	SOSC XTAL
N/A	74	RC14	SOSCO/T1CK/CN0/RC14	SOSC XTAL
N/A	64	RC15	OSC2/CLKO/RC15	XTAL
N/A	51	RF03	USBID/RF3	P32_USBID
N/A	57	RG02	D+/RG2	P32_USBD+
N/A	56	RG03	D-/RG3	P32_USBD-
N/A	2		VDD	POWER
N/A	13		MCLR	ICSP
N/A	15		VSS	POWER
N/A	16		VDD	POWER
N/A	30		AVDD	POWER
N/A	31		AVSS	POWER
N/A	36		VSS	POWER
N/A	37		VDD	POWER
N/A	45		VSS	POWER

N/A	46		VDD	POWER
N/A	54		VBUS	POWER
N/A	55		VUSB	POWER
N/A	62		VDD	POWER
N/A	65		VSS	POWER
N/A	75		VSS	POWER
N/A	85		VCAP/VDDCORE	POWER
N/A	86		VDD	POWER

Pinout Table by MCU Port and Bit

Port Bit	MCU Pin	ChipKIT Pin #	PIC32 Signal Name	Function
RA00	17	47	TMS/RA0	User LED LD3
RA01	38	48	TCK/RA1	User LED LD4
RA02	58	45	SCL2/RA2	I2C, wire (jumper to A5)
RA03	59	46	SDA2/RA3	I2C, wire (jumper to A4)
RA04	60	62	TDI/RA4	I2C Pullup (SDA)
RA05	61	63	TDO/RA5	I2C Pullup (SCL)
RA06	91	65	TRCLK/RA6	BTN1
RA07	92	66	TRD3/RA7	BTN2
RA09	28	41	Vref-/CVref-/AERXD2/PMA7/RA9	GPIO, VREF-
RA10	29	42	Vref+/CVref+/AERXD3/PMA6/RA10	VREF+
RA14	66	8	AETXCLK/SCL1/INT3/RA14	GPIO, external INT (shared with P32_USB0C)
RA15	67	57	AETXEN/SDA1/INT4/RA15	MRF24 INT
RB00	25	17/A3	PGED1/AN0/CN2/RB0	AIN3, GPIO
RB01	24	23/A9	PGEC1/AN1/CN3/RB1	AIN9, GPIO
RB02	23	14/A0	AN2/C2IN-/CN4/RB2	AIN0, GPIO
RB03	22	20/A6	AN3/C2IN+/CN5/RB3	AIN6, GPIO
RB04	21	15/A1	AN4/C1IN-/CN6/RB4	AIN1, GPIO
RB05	20	21/A7	AN5/C1IN+/VBUSON/CN7/RB5	AIN7, P32_VBUSON
RB06	26	N/A	PGEC2/AN6/OCFA/RB6	ICSP
RB07	27	N/A	PGED2/AN7/RB7	ICSP
RB08	32	16/A2	AN8/C1OUT/RB8	AIN2, GPIO

RB09	33	22/A8	AN9/C2OUT/RB9	AIN8, GPIO
RB10	34	18/A4	AN10/CVrefout/PMA13/RB10	AIN4, GPIO
RB11	35	19/A5	AN11/ERXERR/AETXERR/PMA12/RB11	AIN5, GPIO
RB12	41	60	AN12/ERXD0/AECSR/PMA11/RB12	power supply input voltage monitor
RB13	42	61	AN13/ERXD1/AECOL/PMA10/RB13	
RB14	43	24/A10	AN14/ERXD2/AETXD3/PMALH/PMA1/RB14	AIN10, GPIO
RB15	44	25/A11	AN15/ERXD3/AETXD2/OCFB/PMALL/PMA0/CN12/RB15	AIN11, GPIO
RC01	6	67	T2CK/RC1	(shared with digital pin 34)
RC02	7	68	T3CK/RC2	(shared with digital pin 35)
RC03	8	69	T4CK/RC3	(shared with digital pin 36)
RC04	9	38	T5CK/SDI1/RC4	GPIO
RC12	63	N/A	OSC1/CLKI/RC12	XTAL
RC13	73	N/A	SOSCI/CN1/RC13	SOSC XTAL
RC14	74	N/A	SOSCO/T1CK/CN0/RC14	SOSC XTAL
RC15	64	N/A	OSC2/CLKO/RC15	XTAL
RD00	72	3	SDO1/OC1/INT0/RD0	PWM 1
RD01	76	5	OC2/RD1	PWM 2
RD02	77	6	OC3/RD2	PWM 3
RD03	78	9	OC4/RD3	PWM 4
RD04	81	10	OC5/PMWR/CN13/RD4	PWM 5 (JPR to digital pin 10 position)
RD05	82	34	PMRD/CN14/RD5	GPIO
RD06	83	36	ETXEN/PMD14/CN15/RD6	GPIO
RD07	84	37	ETXCLK/PMD15/CN16/RD7	GPIO
RD08	68	70	RTCC/EMDIO/AEMDIO/IC1/RD8	(shared with digital pin 2)
RD09	69	71	SS1/IC2/RD9	(shared with digital pin 7)
RD10	70	72	SCK1/IC3/PMCS2/PMA15/RD10	(shared with digital pin 8)
RD11	71	35	EMDC/AEMDC/IC4/PMCS1/PMA14/RD11	GPIO
RD12	79	73	ETXD2/IC5/PMD12/RD12	(shared with digital pin 10)
RD13	80	64	ETXD3/PMD13/CN19/RD13	5V Power Enable
RD14	47	39	AETXD0/SS3/U4RX/U1CTS/CN20/RD14	GPIO, UART
RD15	48	40	AETXD1/SCK3/U4TX/U1RTS/CN21/RD15	GPIO, UART
RE00	93	26	PMD0/RE0	GPIO

RE01	94	27	PMD1/RE1	GPIO
RE02	98	28	PMD2/RE2	GPIO
RE03	99	29	PMD3/RE3	GPIO
RE04	100	30	PMD4/RE4	GPIO
RE05	3	31	PMD5/RE5	GPIO
RE06	4	32	PMD6/RE6	GPIO
RE07	5	33	PMD7/RE7	GPIO
RE08	18	2	AERXD0/INT1/RE8	GPIO, external INT
RE09	19	7	AERXD1/INT2/RE9	GPIO, external INT, USBOC INT
RF00	87	43	ETXD1/PMD11/RF0	User LED LD5
RF01	88	4	ETXD0/PMD10/RF1	GPIO
RF02	52	0	SDA3/SDI3/U1RX/RF2	GPIO, UART
RF03	51	N/A	USBID/RF3	P32_USBID
RF04	49	55	SDA5/SDI4/U2RX/PMA9/CN17/RF4	MRF24 SPI
RF05	50	56	SCL5/SDO4/U2TX/PMA8/CN18/RF5	MRF24 SPI
RF08	53	1	SCL3/SDO3/U1TX/RF8	GPIO, UART
RF12	40	54	SS4/U5RX/U2CTS/RF12	MRF24 SPI
RF13	39	53	SCK4/U5TX/U2RTS/RF13	MRF24 SPI
RG00	90	59	PMD8/RG0	MRF24 RESET
RG01	89	58	ETXERR/PMD9/RG1	MRF24 HIBERNATE
RG02	57	N/A	D+/RG2	P32_USBD+
RG03	56	N/A	D-/RG3	P32_USBD-
RG06	10	13	ECOL/SCK2/U6TX/U3RTS/PMA5/CN8/RG6	SPI_SCK, User LED LD6
RG07	11	12	ECRS/SDA4/SDI2/U3RX/PMA4/CN9/RG7	SPI_SDI
RG08	12	11	ERXDV/AERXDV/ECRS/SDV/AECRS/SDV/SCL4/SDO2/U3TX/PMA3/CN10/RG8	SPI_SDO
RG09	14	44	ERXCLK/AERXCLK/EREFCLK/AEREFCLK/SS2/U6RX/U3CTS/PMA2/CN11/RG9	SPI_SS (JPR to digital pin 10 position)
RG12	96	51	TRD1/RG12	SD Card
RG13	97	52	TRD0/RG13	SD Card
RG14	95	50	TRD2/RG14	SD Card
RG15	1	49	AERXERR/RG15	SD Card
	2	N/A	VDD	POWER
	13	N/A	MCLR	ICSP
	15	N/A	VSS	POWER
	16	N/A	VDD	POWER
	30	N/A	AVDD	POWER

	31	N/A	AVSS	POWER
	36	N/A	VSS	POWER
	37	N/A	VDD	POWER
	45	N/A	VSS	POWER
	46	N/A	VDD	POWER
	54	N/A	VBUS	POWER
	55	N/A	VUSB	POWER
	62	N/A	VDD	POWER
	65	N/A	VSS	POWER
	75	N/A	VSS	POWER
	85	N/A	VCAP/VDDCORE	POWER
	86	N/A	VDD	POWER

Pinout Table by PIC32 Microcontroller Pin

MCU Pin	Port Bit	ChipKIT Pin #	PIC32 Signal Name	Function
1	RG15	49	AERXERR/RG15	SD Card
2		N/A	VDD	POWER
3	RE05	31	PMD5/RE5	GPIO
4	RE06	32	PMD6/RE6	GPIO
5	RE07	33	PMD7/RE7	GPIO
6	RC01	67	T2CK/RC1	(shared with digital pin 34)
7	RC02	68	T3CK/RC2	(shared with digital pin 35)
8	RC03	69	T4CK/RC3	(shared with digital pin 36)
9	RC04	38	T5CK/SDI1/RC4	GPIO
10	RG06	13	ECOL/SCK2/U6TX/U3RTS/PMA5/CN8/RG6	SPI_SCK, User LED LD6
11	RG07	12	ECRS/SDA4/SDI2/U3RX/PMA4/CN9/RG7	SPI_SDI
12	RG08	11	ERXDV/AERXDV/ECRSdv/AECRSdv/SCL4/SDO2/U3TX/PMA3/CN10/RG8	SPI_SDO
13		N/A	MCLR	ICSP
14	RG09	44	ERXCLK/AERXCLK/EREFLK/AEREFCLK/SS2/U6RX/U3CTS/PMA2/CN11/RG9	SPI_SS (JPR to digital pin 10 position)
15		N/A	VSS	POWER
16		N/A	VDD	POWER
17	RA00	47	TMS/RA0	User LED LD3

18	RE08	2	AERXD0/INT1/RE8	GPIO, external INT
19	RE09	7	AERXD1/INT2/RE9	GPIO, external INT, USBOT INT
20	RB05	21/A7	AN5/C1IN+/VBUSON/CN7/RB5	AIN7, P32_VBUSON
21	RB04	15/A1	AN4/C1IN-/CN6/RB4	AIN1, GPIO
22	RB03	20/A6	AN3/C2IN+/CN5/RB3	AIN6, GPIO
23	RB02	14/A0	AN2/C2IN-/CN4/RB2	AIN0, GPIO
24	RB01	23/A9	PGEC1/AN1/CN3/RB1	AIN9, GPIO
25	RB00	17/A3	PGED1/AN0/CN2/RB0	AIN3, GPIO
26	RB06	N/A	PGEC2/AN6/OCFA/RB6	ICSP
27	RB07	N/A	PGED2/AN7/RB7	ICSP
28	RA09	41	Vref-/CVref-/AERXD2/PMA7/RA9	GPIO, VREF-
29	RA10	42	Vref+/CVref+/AERXD3/PMA6/RA10	VREF+
30		N/A	AVDD	POWER
31		N/A	AVSS	POWER
32	RB08	16/A2	AN8/C1OUT/RB8	AIN2, GPIO
33	RB09	22/A8	AN9/C2OUT/RB9	AIN8, GPIO
34	RB10	18/A4	AN10/CVrefout/PMA13/RB10	AIN4, GPIO
35	RB11	19/A5	AN11/ERXERR/AETXERR/PMA12/RB11	AIN5, GPIO
36		N/A	VSS	POWER
37		N/A	VDD	POWER
38	RA01	48	TCK/RA1	User LED LD4
39	RF13	53	SCK4/U5TX/U2RTS/RF13	MRF24 SPI
40	RF12	54	SS4/U5RX/U2CTS/RF12	MRF24 SPI
41	RB12	60	AN12/ERXD0/AECRS/PMA11/RB12	power supply input voltage monitor
42	RB13	61	AN13/ERXD1/AECOL/PMA10/RB13	
43	RB14	24/A10	AN14/ERXD2/AETXD3/PMALH/PMA1/RB14	AIN10, GPIO
44	RB15	25/A11	AN15/ERXD3/AETXD2/OCFB/PMALL/PMA0/CN12/RB15	AIN11, GPIO
45		N/A	VSS	POWER
46		N/A	VDD	POWER
47	RD14	39	AETXD0/SS3/U4RX/U1CTS/CN20/RD14	GPIO, UART
48	RD15	40	AETXD1/SCK3/U4TX/U1RTS/CN21/RD15	GPIO, UART
49	RF04	55	SDA5/SDI4/U2RX/PMA9/CN17/RF4	MRF24 SPI
50	RF05	56	SCL5/SDO4/U2TX/PMA8/CN18/RF5	MRF24 SPI
51	RF03	N/A	USBID/RF3	P32_USBID
52	RF02	0	SDA3/SDI3/U1RX/RF2	GPIO, UART
53	RF08	1	SCL3/SDO3/U1TX/RF8	GPIO, UART

54		N/A	VBUS	POWER
55		N/A	VUSB	POWER
56	RG03	N/A	D-/RG3	P32_USBD-
57	RG02	N/A	D+/RG2	P32_USBD+
58	RA02	45	SCL2/RA2	I2C, wire (jumper to A5)
59	RA03	46	SDA2/RA3	I2C, wire (jumper to A4)
60	RA04	62	TDI/RA4	I2C Pullup (SDA)
61	RA05	63	TDO/RA5	I2C Pullup (SCL)
62		N/A	VDD	POWER
63	RC12	N/A	OSC1/CLKI/RC12	XTAL
64	RC15	N/A	OSC2/CLKO/RC15	XTAL
65		N/A	VSS	POWER
66	RA14	8	AETXCLK/SCL1/INT3/RA14	GPIO, external INT (shared with P32_USBOC)
67	RA15	57	AETXEN/SDA1/INT4/RA15	MRF24 INT
68	RD08	70	RTCC/EMDIO/AEMDIO/IC1/RD8	(shared with digital pin 2)
69	RD09	71	SS1/IC2/RD9	(shared with digital pin 7)
70	RD10	72	SCK1/IC3/PMCS2/PMA15/RD10	(shared with digital pin 8)
71	RD11	35	EMDC/AEMDC/IC4/PMCS1/PMA14/RD11	GPIO
72	RD00	3	SDO1/OC1/INT0/RD0	PWM 1
73	RC13	N/A	SOSCI/CN1/RC13	SOSC XTAL
74	RC14	N/A	SOSCO/T1CK/CN0/RC14	SOSC XTAL
75		N/A	VSS	POWER
76	RD01	5	OC2/RD1	PWM 2
77	RD02	6	OC3/RD2	PWM 3
78	RD03	9	OC4/RD3	PWM 4
79	RD12	73	ETXD2/IC5/PMD12/RD12	(shared with digital pin 10)
80	RD13	64	ETXD3/PMD13/CN19/RD13	5V Power Enable
81	RD04	10	OC5/PMWR/CN13/RD4	PWM 5 (JPR to digital pin 10 position)
82	RD05	34	PMRD/CN14/RD5	GPIO
83	RD06	36	ETXEN/PMD14/CN15/RD6	GPIO
84	RD07	37	ETXCLK/PMD15/CN16/RD7	GPIO
85		N/A	VCAP/VDDCORE	POWER

86		N/A	VDD	POWER
87	RF00	43	ETXD1/PMD11/RF0	User LED LD5
88	RF01	4	ETXD0/PMD10/RF1	GPIO
89	RG01	58	ETXERR/PMD9/RG1	MRF24 HIBERNATE
90	RG00	59	PMD8/RG0	MRF24 RESET
91	RA06	65	TRCLK/RA6	BTN1
92	RA07	66	TRD3/RA7	BTN2
93	RE00	26	PMD0/RE0	GPIO
94	RE01	27	PMD1/RE1	GPIO
95	RG14	50	TRD2/RG14	SD Card
96	RG12	51	TRD1/RG12	SD Card
97	RG13	52	TRD0/RG13	SD Card
98	RE02	28	PMD2/RE2	GPIO
99	RE03	29	PMD3/RE3	GPIO
100	RE04	30	PMD4/RE4	GPIO

CHIPKIT and the CHIPKIT Logo are trademarks or registered trademarks of Microchip Technology Incorporated in the U.S. and other countries, and are used under license.

Declaration of Conformity

In accordance with EN ISO/IEC 17050-1:2010

Manufacturers Name: Digilent, Inc.
Manufacturers Address: 1300 NE Henley Court
Pullman, WA 99163
U.S.A.

Application of Council Directives:


EMC 2004/108/EC

Standards:

EMC EN55022:2010
EN55024:2010

Product Name: chipKIT WF32
Product Model Number: Digilent P/N 210-273
Digilent Product Category: Small Form Factor Microcontroller Boards

We, the undersigned, hereby declare that the equipment specified above conforms to the above Directives and Standards.

Location: Pullman, WA Signature: 
Date: August 14, 2013 Full Name (print): Clint Cole
Title: President

Компания «Океан Электроники» предлагает заключение долгосрочных отношений при поставках импортных электронных компонентов на взаимовыгодных условиях!

Наши преимущества:

- Поставка оригинальных импортных электронных компонентов напрямую с производств Америки, Европы и Азии, а так же с крупнейших складов мира;
- Широкая линейка поставок активных и пассивных импортных электронных компонентов (более 30 млн. наименований);
- Поставка сложных, дефицитных, либо снятых с производства позиций;
- Оперативные сроки поставки под заказ (от 5 рабочих дней);
- Экспресс доставка в любую точку России;
- Помощь Конструкторского Отдела и консультации квалифицированных инженеров;
- Техническая поддержка проекта, помощь в подборе аналогов, поставка прототипов;
- Поставка электронных компонентов под контролем ВП;
- Система менеджмента качества сертифицирована по Международному стандарту ISO 9001;
- При необходимости вся продукция военного и аэрокосмического назначения проходит испытания и сертификацию в лаборатории (по согласованию с заказчиком);
- Поставка специализированных компонентов военного и аэрокосмического уровня качества (Xilinx, Altera, Analog Devices, Intersil, Interpoint, Microsemi, Actel, Aeroflex, Peregrine, VPT, Syfer, Eurofarad, Texas Instruments, MS Kennedy, Miteq, Cobham, E2V, MA-COM, Hittite, Mini-Circuits, General Dynamics и др.);

Компания «Океан Электроники» является официальным дистрибьютором и эксклюзивным представителем в России одного из крупнейших производителей разъемов военного и аэрокосмического назначения «JONHON», а так же официальным дистрибьютором и эксклюзивным представителем в России производителя высокотехнологичных и надежных решений для передачи СВЧ сигналов «FORSTAR».



JONHON

«JONHON» (основан в 1970 г.)

Разъемы специального, военного и аэрокосмического назначения:

(Применяются в военной, авиационной, аэрокосмической, морской, железнодорожной, горно- и нефтедобывающей отраслях промышленности)

«FORSTAR» (основан в 1998 г.)

ВЧ соединители, коаксиальные кабели,
кабельные сборки и микроволновые компоненты:

(Применяются в телекоммуникациях гражданского и специального назначения, в средствах связи, РЛС, а так же военной, авиационной и аэрокосмической отраслях промышленности).



Телефон: 8 (812) 309-75-97 (многоканальный)

Факс: 8 (812) 320-03-32

Электронная почта: ocean@oceanchips.ru

Web: <http://oceanchips.ru/>

Адрес: 198099, г. Санкт-Петербург, ул. Калинина, д. 2, корп. 4, лит. А