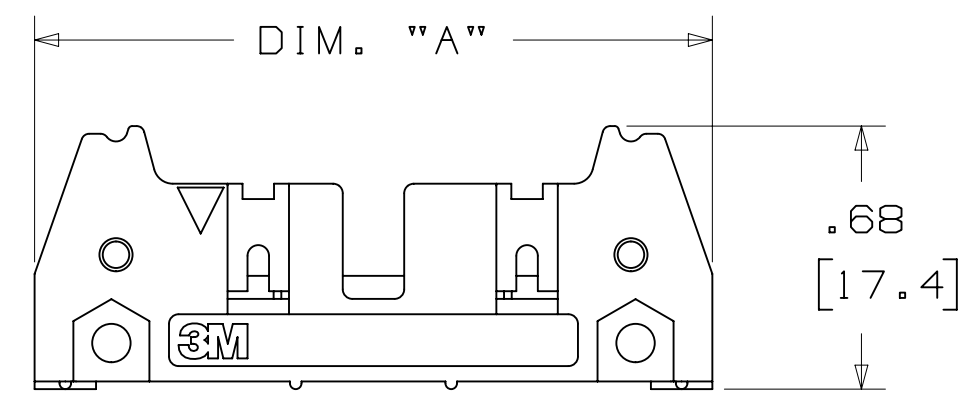
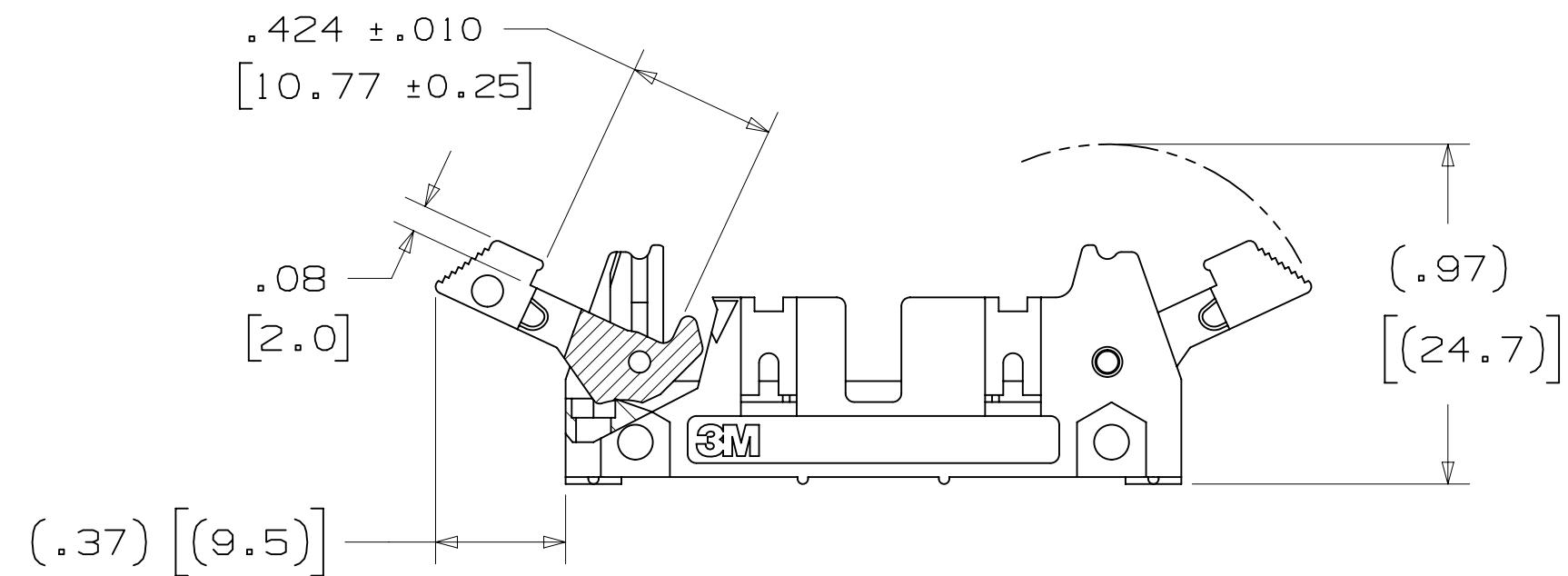


# 3M™ THREE-WALL HEADER, 3000 SERIES

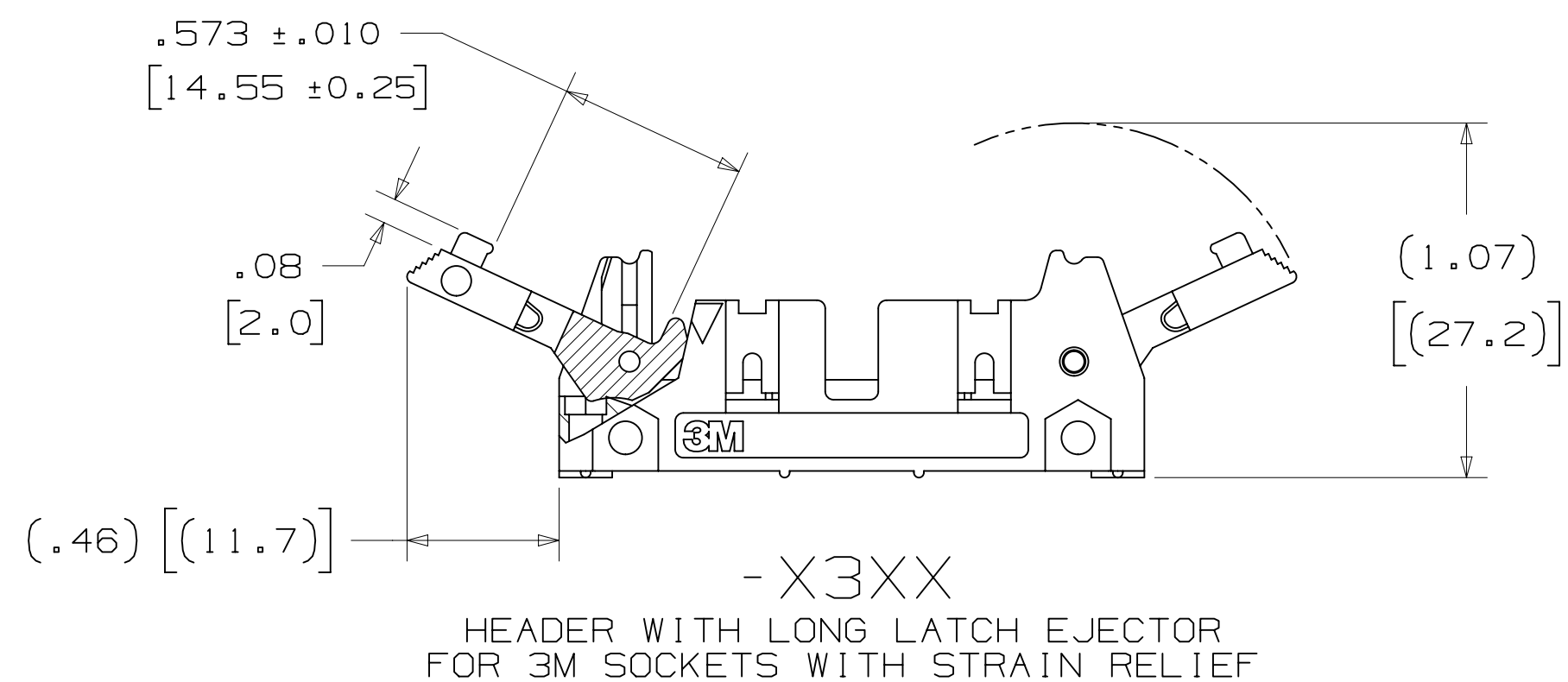
.100" X .100" LATCH/EJECTOR, STRAIGHT AND RIGHT ANGLE



-X0XX  
HEADER WITHOUT LATCH/EJECTOR



-X2XX  
HEADER WITH SHORT LATCH/EJECTOR  
FOR 3M SOCKETS WITHOUT STRAIN RELIEF



-X3XX  
HEADER WITH LONG LATCH/EJECTOR  
FOR 3M SOCKETS WITH STRAIN RELIEF

- \* MILITARY (WITH 3M'S N3518 POLARIZING KEY) AND CENTERBUMP POLARIZATION.
- \* LOW PROFILE.
- \* OPTIONAL EJECTOR LATCHES.
- \* MOUNTING HOLES FOR SECURING HEADER TO BOARD.
- \* THREE WALL SHROUD PROVIDES DESIGN FLEXIBILITY.
- \* SOLDER TAIL AND WRAP TAIL OPTIONS.
- \* OPTIONAL POLARIZING POSTS AVAILABLE.
- \* HIGH TEMPERATURE INSULATOR SUITABLE FOR "NO LEAD" SOLDERING OPERATIONS.
- \* SUITABLE FOR REFLOW SOLDERING USING "PASTE IN HOLE" TECHNIQUES.

## 2 PHYSICAL :

INSULATOR: GLASS FILLED POLYESTER (PCT)  
 MATERIAL: UL94V-0  
 FLAMMABILITY: BLACK  
 COLOR: BLACK  
 CONTACT: COPPER ALLOY  
 PLATING: 100μ" [2.54μm] NICKEL-OVERALL  
 UNDER PLATING: 30μ" [0.76μm] AVG. GOLD  
 WIPING AREA: 200μ" [5.08μm] TIN LEAD OR MATTE TIN (SEE ORDERING INFORMATION)  
 MARKINGS: 3M LOGO, PART IDENTIFICATION NUMBER AND ORIENTATION TRIANGLE

## 2 ELECTRICAL :

CURRENT RATING: 5.00A, 1 CONTACT POWERED  
 3.00A, 6 CONTACTS POWERED  
 1.75A, ALL CONTACTS POWERED  
 RATING CONDITIONS: EIA-364-070 METHOD 2, 30°C MAXIMUM TEMPERATURE RISE, 20% DERATED. REFERENCE APPROPRIATE 3M PRODUCT SPECIFICATION FOR DETAILED CURRENT DERATING CURVES.  
 INSULATION RESISTANCE: >1 X 10<sup>9</sup>Ω AT 500 V<sub>DC</sub>  
 WITHSTANDING VOLTAGE: 1,000V<sub>RMS</sub> AT SEA LEVEL

## 2 ENVIRONMENTAL :

TEMPERATURE RATING: -55°C TO 105°C  
 PROCESS RATING: 260°C, PER J-STD-020C, SINGLE PASS  
 MOISTURE SENSITIVITY LEVEL: 1 (PER J-STD-020C)

- NOTES
1. REGULATORY INFORMATION: ROHS COMPLIANT. SEE THE REGULATORY INFORMATION APPENDIX (RIA) IN THE "ROHS COMPLIANCE" SECTION OF WWW.3MCONNECTORS.COM FOR COMPLIANCE INFORMATION.
  2. IN THE EVENT OF CONFLICT BETWEEN THIS DATA AND THAT CONTAINED IN THE PRODUCT SPECIFICATION, THE PRODUCT SPECIFICATION TAKES PRECEDENT.
  3. NOTCHES A & C WILL ACCOMMODATE 3M POLARIZING KEY: N3518).
  4. MOUNTING HARDWARE: FROM SOLDER SIDE OF PC BOARD USE #4-24 THREAD CUTTING SCREW (3M PART #3341-5) WITH Ø.116 [2.95] MOUNTING HOLE. FOR RIGHT ANGLE VERSION ONLY: #2-56 BOLT AND NUT (3M PART #3341-6) WITH Ø.106 [2.69] MOUNTING HOLE MAY BE USED.
  5. THE RECOMMENDED PCB HOLE SIZE FOR THE KINKED TAIL POSITIONS ON THE .112 SOLDER TAIL CONNECTOR IS Ø.035±.002. (SEE K2 VERSION).

## ORDERING INFORMATION

X3XXX-XXXXXX

N = HIGH TEMP BLACK (PCT)/(RB PLATING REQ'D)  
 BLANK = (UB PLATING)

3M PART NUMBER:  
 (SEE TABLE 1)

PIN CONFIGURATION:  
 1 = RIGHT ANGLE SOLDER TAILS  
 2 = STRAIGHT SOLDER TAILS

PLATING:  
 RB = 30μ" [0.76μm] GOLD AND 200μ" [5.08μm] MATTE TIN (APP. E1 & C1 APPLY)  
 UB = 30μ" [0.76μm] GOLD AND 200μ" [5.08μm] TIN LEAD (APP. E3 & C2 APPLY)

TAIL:  
 02 = FOR .062 [1.57] THICK BOARD  
 03 = FOR .094 TO .125 [2.39 TO 3.18] THICK BOARD  
 K2 = KINKED FOR .062 [1.57] THICK BOARD

LATCH/EJECTOR SYSTEM:  
 0 = NO LATCH/EJECTOR INSTALLED  
 2 = SHORT ROLL PIN LATCH/EJECTORS  
 3 = LONG ROLL PIN LATCH/EJECTORS

DIMENSIONS: INCHES [MM]  
 [MM] IS REF. ONLY

|                                 |               |                            |     |                            |      |      |
|---------------------------------|---------------|----------------------------|-----|----------------------------|------|------|
| DESIGN REFERENCE                | NEXT ASSEMBLY | REV                        | ECO | ISSUE DATE AND DESCRIPTION | DRFT | CHKD |
| Interconnect Solutions          | EMSD          |                            |     |                            |      |      |
| DO NOT SCALE DRAWING            | SCALE 1       | TOLERANCES EXCEPT AS NOTED |     | INCHES                     |      |      |
| THIRD ANGLE PROJECTION          |               | MILLIMETERS                |     | DATE                       |      |      |
| INTERPRET PER ASME Y14.5 - 2009 |               | MAX SURFACE ROUGHNESS      |     | DATE                       |      |      |
| SURFACES                        |               | MARKED ONLY                |     | DATE                       |      |      |
| CAGE NUMBER                     |               | DRAWING NO.                |     | REV.                       |      |      |
| D 78-5100-0771-5                |               | H                          |     | SHT 1 OF 4                 |      |      |
| MODEL                           |               | 3000 SERIES                |     | SHT 1 OF 4                 |      |      |

3M ELECTRONIC MATERIALS SOLUTIONS DIVISION  
 INTERCONNECT SOLUTIONS  
<http://www.3mconnectors.com>

3M IS A TRADEMARK OF 3M COMPANY.  
 FOR TECHNICAL, SALES OR ORDERING  
 INFORMATION CALL 800-225-5373



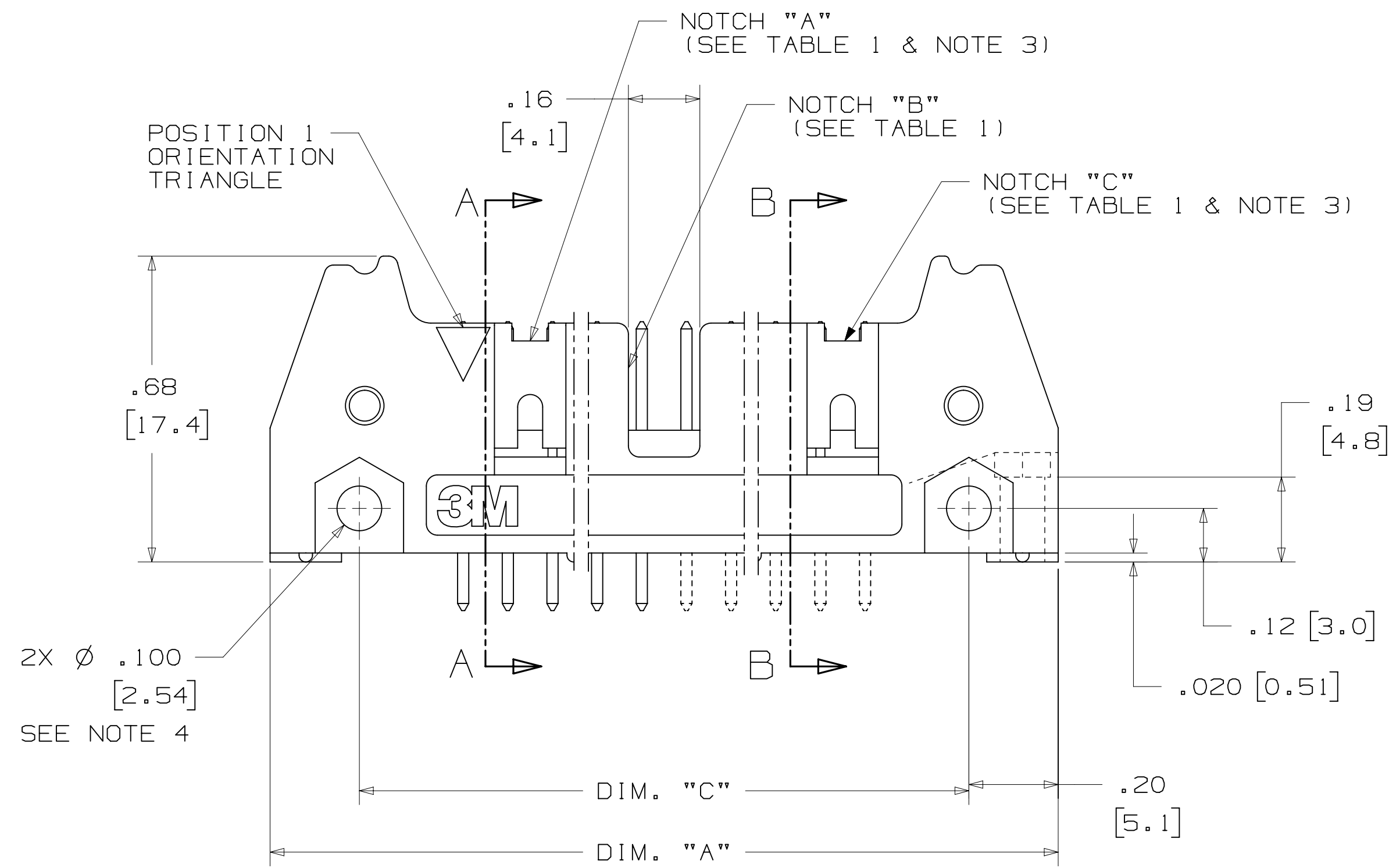
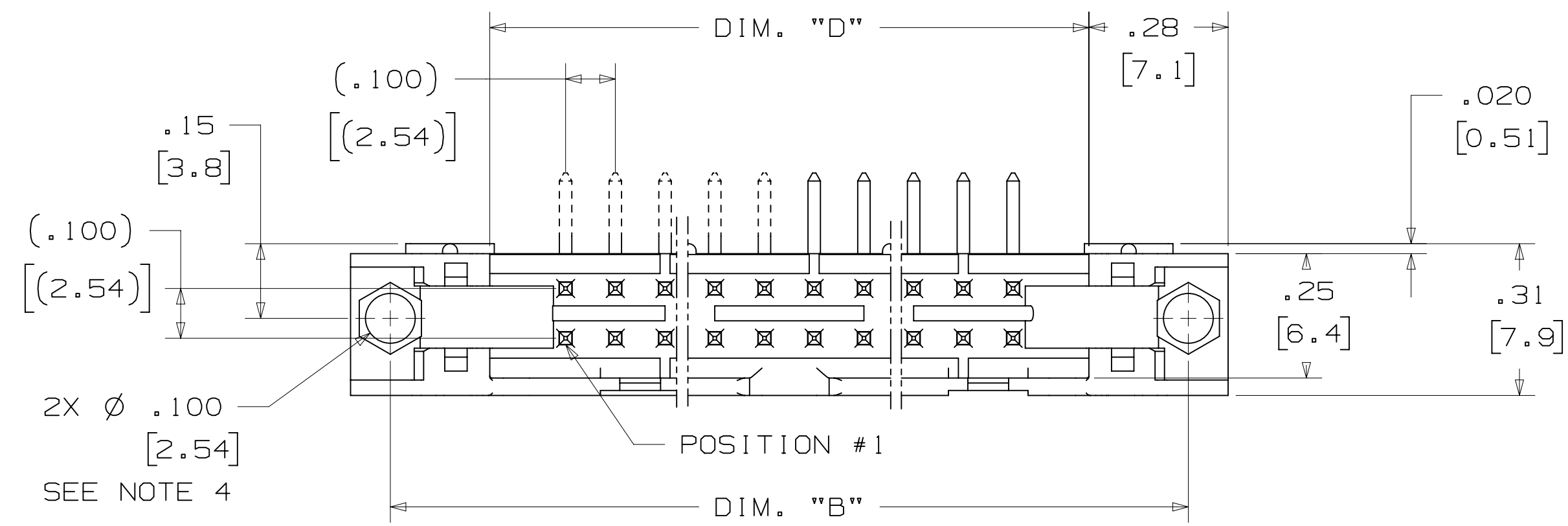
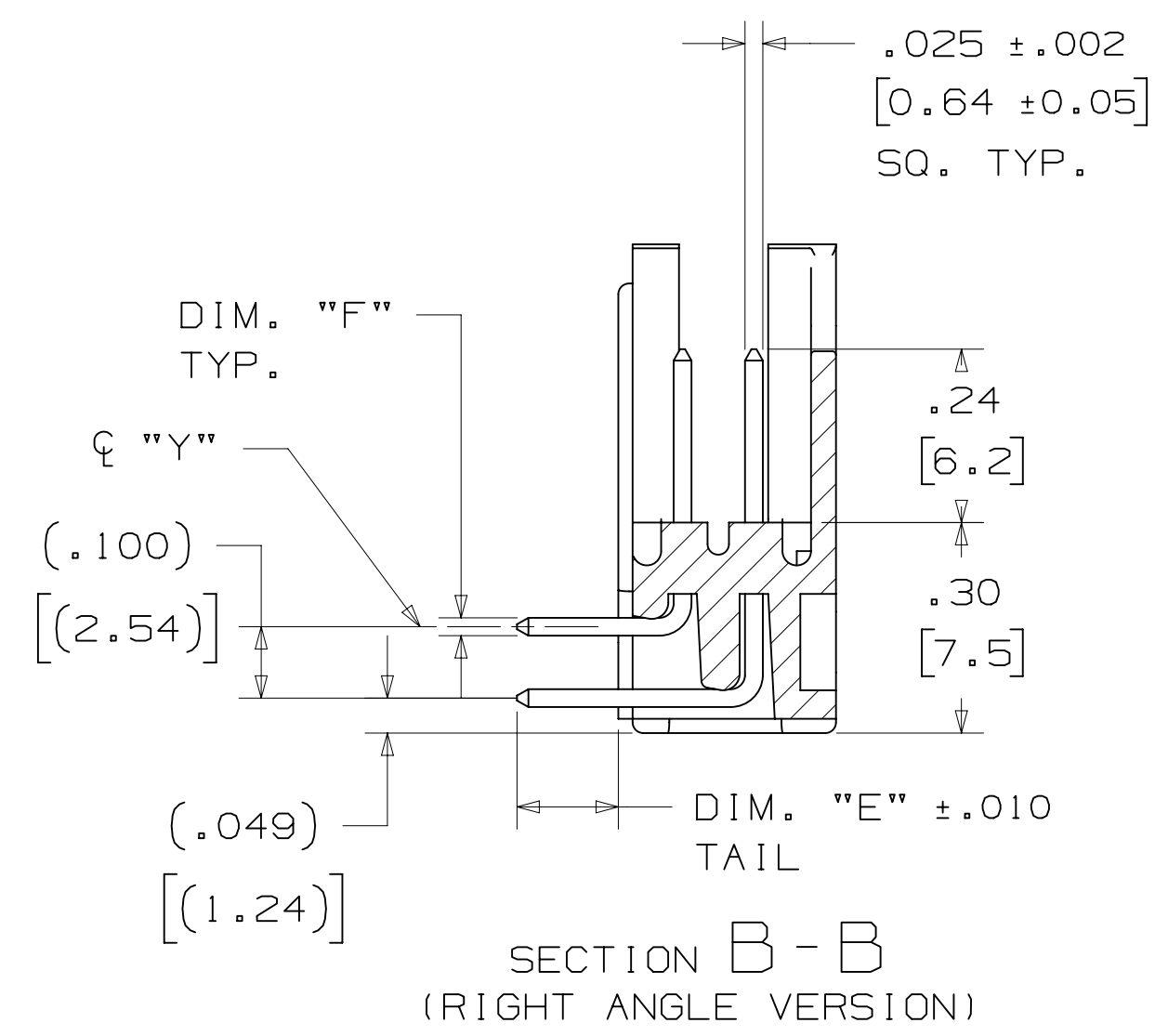
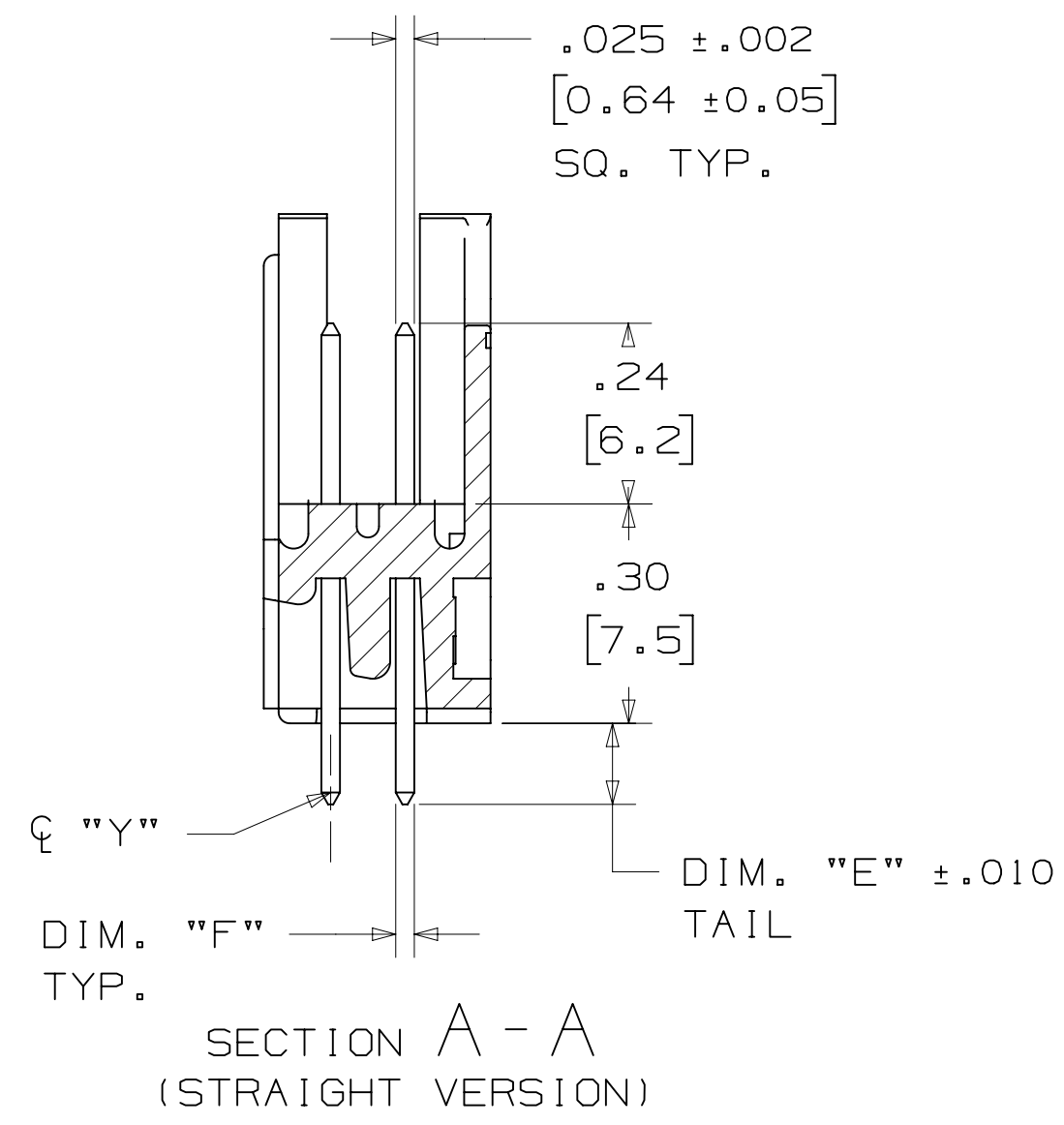
UL FILE NO: E68080

78-5100-0771-5 H REVISION DRAWING NUMBER

Imaged: H.1 3/6/2015 12:53 PM UTC-06:00

# 3M™ THREE-WALL HEADER, 3000 SERIES

.100" X .100" LATCH/EJECTOR, STRAIGHT AND RIGHT ANGLE



| TABLE 1  |                |              |               |               |             |                    |          |
|----------|----------------|--------------|---------------|---------------|-------------|--------------------|----------|
| PIN QTY. | 3M PART NUMBER | DIM. "A"     | DIM. "B"      | DIM. "C"      | DIM. "D"    | POLARIZING NOTCHES | PIN QTY. |
| 10       | 3793           | 1.26 [32.1]  | 1.105 [28.04] | .865 [21.97]  | .71 [18.0]  | BC                 | 10       |
| 14       | 3314           | 1.46 [37.2]  | 1.305 [33.12] | 1.065 [27.05] | .91 [23.1]  | BC                 | 14       |
| 16       | 3408           | 1.56 [39.7]  | 1.405 [35.66] | 1.165 [29.59] | 1.01 [25.6] | ABC                | 16       |
| 20       | 3428           | 1.76 [44.8]  | 1.604 [40.74] | 1.365 [34.67] | 1.21 [30.7] | ABC                | 20       |
| 26       | 3429           | 2.06 [52.4]  | 1.905 [48.36] | 1.665 [42.29] | 1.51 [38.3] | ABC                | 26       |
| 34       | 3431           | 2.46 [62.6]  | 2.305 [58.52] | 2.065 [52.45] | 1.91 [48.5] | ABC                | 34       |
| 40       | 3432           | 2.76 [70.2]  | 2.605 [66.14] | 2.365 [60.07] | 2.21 [56.1] | ABC                | 40       |
| 50       | 3433           | 3.26 [82.9]  | 3.105 [78.84] | 2.865 [72.77] | 2.71 [68.8] | ABC                | 50       |
| 60       | 3372           | 3.76 [95.6]  | 3.605 [91.54] | 3.365 [85.47] | 3.21 [81.5] | ABC                | 60       |
| 64       | 3764           | 3.96 [100.7] | 3.805 [96.62] | 3.565 [90.55] | 3.41 [86.6] | ABC                | 64       |

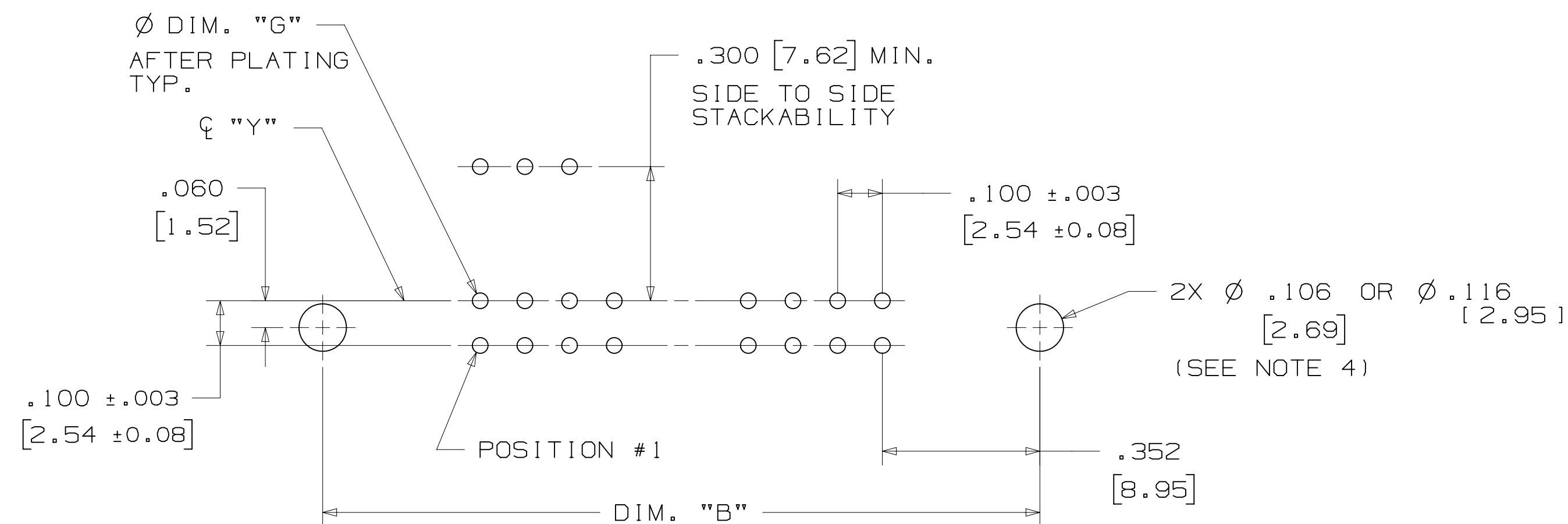
| TABLE 2               |   |             |                       |                    |                   |                               |
|-----------------------|---|-------------|-----------------------|--------------------|-------------------|-------------------------------|
| 3M PART NUMBER SUFFIX | CONTACT TAIL                              | DIM. "E"    | PIN CROSS SECTION     |                    |                   | DIM. "G"                      |
| -1XX2                 | .062 [1.57] THICK PC BOARD                | .112 [2.84] | DIM. "F"              | DIAGONALS          | CORNER RADIUS     | .035+/- .003 [.89] SEE NOTE 5 |
| -2XX2                 |   |             | .0245+/- .0005 [.622] | .028+/- .001 [.71] | .0075 REF. [.191] |                               |
| -1X03                 | .094 [2.39] TO .125 [3.18] THICK PC BOARD | .155 [3.94] | .0245+/- .0005 [.622] | .028+/- .001 [.71] | .0075 REF. [.191] | .035+/- .003 [.89]            |
| -2X03                 |   |             |                       |                    |                   |                               |

|   |               |   |              |   |              |      |
|---|---------------|---|--------------|---|--------------|------|
| DESIGN REFERENCE  | NEXT ASSEMBLY | REV   | ECO          | ISSUE DATE AND DESCRIPTION  | DRFT         | CHKD |
|   |               | CASTIGLIONE   | AUG 05, 2014 | MFG   |              |      |
|   |               |   |              | DATE  | DATE         | DATE |
|   |               |   |              | R. SCHERER  | SEP 05, 2014 |      |
| DIVISION: Interconnect Solutions<br>SCALE: DO NOT SCALE DRAWING<br>THIRD ANGLE PROJECTION<br>MAX SURFACE ROUGHNESS: 0.13<br>MARKED ONLY |               | DIVISION CODE: EMSD<br>TOLERANCES EXCEPT AS NOTED:<br>INCHES: .00 ±.01, .000 ±.005, .0000 ±.<br>MILLIMETERS: 0 ±.3, .00 ±.13, .000 ±. |              | © 3M COPYRIGHT 2015<br>This document and the information it contains are 3M property and may not be reproduced or further distributed without 3M permission, or used or disclosed other than for 3M authorized purposes. All rights reserved. |              |      |
| TITLE: HEADER, 3-WALL, .100 X .100 LATCH/EJECTOR, STRAIGHT & RA   |               | CAGE NUMBER: D78-5100-0771-5  |              | REV. H  |              |      |
| MODEL: 3000 SERIES  |               | DET:  |              | SHT 2 OF 4  |              |      |

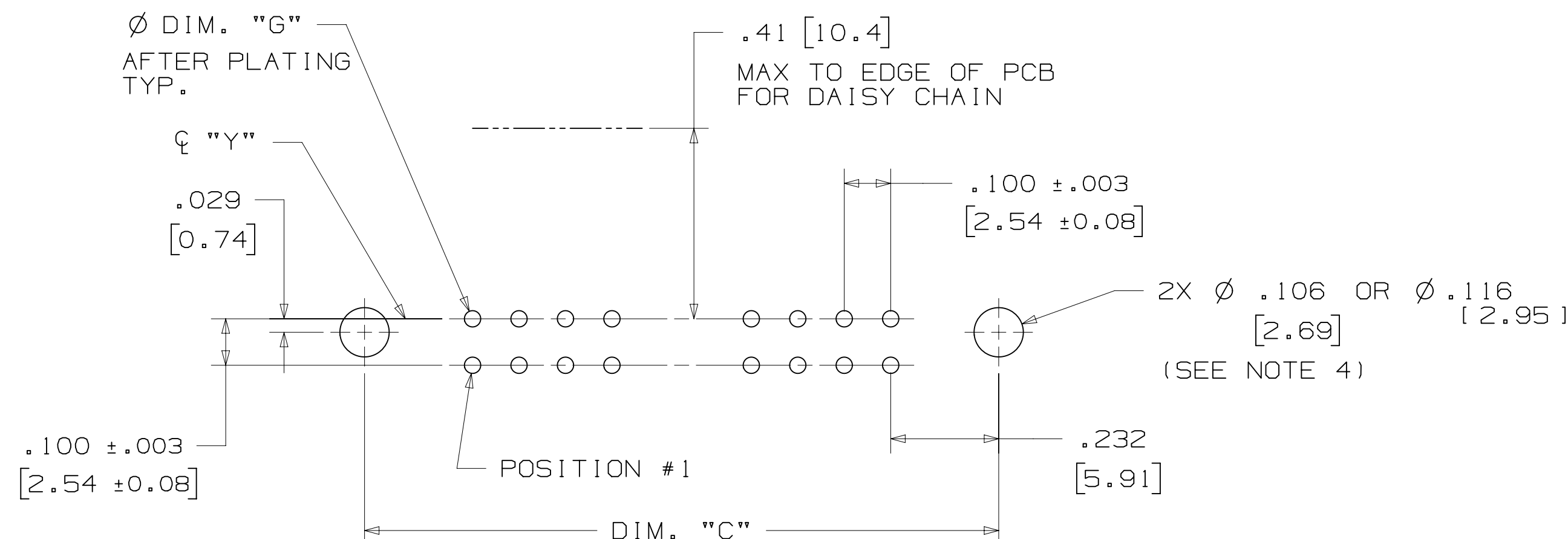
H REVISION  
 G 56068 AUG 05, 2014 REVISED AND REDRAWN JNC RS  
 D78-5100-0771-5 DRAWING NUMBER  
 3/6/2015 12:53 PM UTC-06:00  
 Imaged: H.1 3/6/2015 12:53 PM UTC-06:00

# 3M™ THREE-WALL HEADER, 3000 SERIES

.100" X .100" LATCH/EJECTOR, STRAIGHT AND RIGHT ANGLE



RECOMMENDED MOUNTING HOLE PATTERN  
(STRAIGHT VERSION)



RECOMMENDED MOUNTING HOLE PATTERN  
(RIGHT ANGLE VERSION)

## PART CUSTOMIZATION

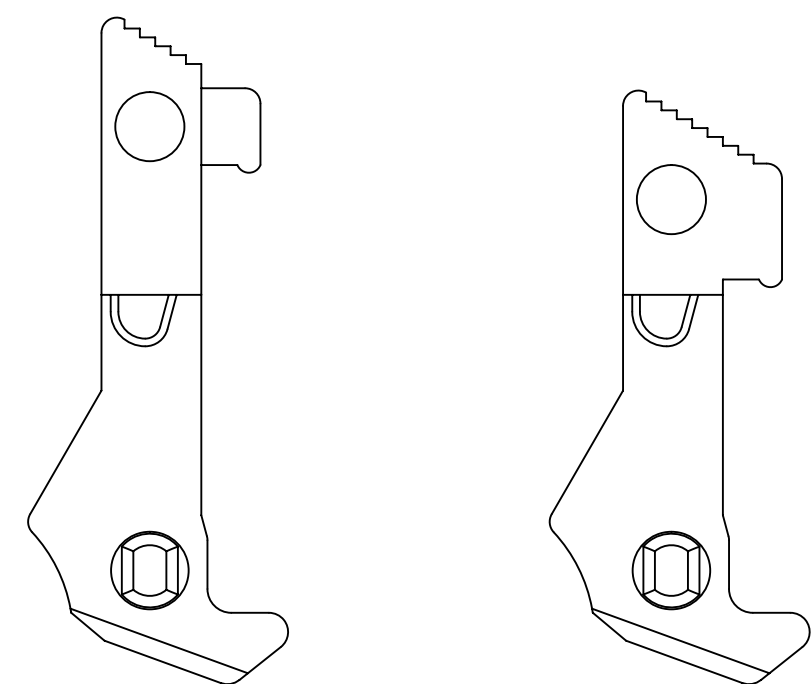
THIS SPEC SHEET DETAILS OUR STANDARD OFFERING.

3M HAS SEVERAL CAPABILITIES THAT CAN PROVIDE A PART TAILORED TO YOUR SPECIFIC NEEDS. ASK YOUR 3M SALES REPRESENTATIVE OR CUSTOMER SERVICE FOR MORE DETAILS.

BOTH SNAP-IN AND ROLL PIN LATCHES MAY BE ORDERED SEPARATELY. SNAP-IN AND ROLL PIN STYLE LATCHES ARE DIMENSIONALLY AND FUNCTIONALLY EQUIVALENT. IF ORDERING SNAP-IN OR ROLL PIN STYLE LATCHES SEPARATELY, PLEASE USE THE BELOW CHART.

| MATERIAL         | SHORT LATCH | LONG LATCH | LATCH STYLE | COLOR |
|------------------|-------------|------------|-------------|-------|
| HIGH TEMP. (PCT) | N3505-2B    | N3505-3B   | ROLL PIN    | BLACK |
| HIGH TEMP. (PPA) | N3505-30B   | N3505-31B  | SNAP-IN     | BLACK |

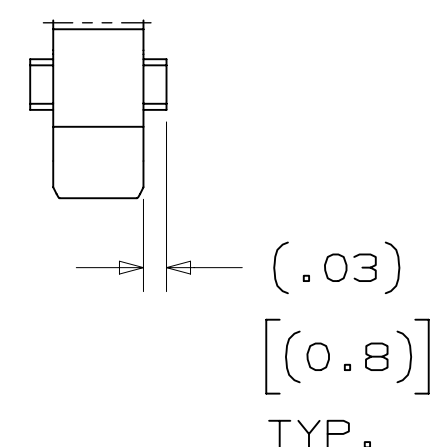
- \* SELECTIVE PIN REMOVAL (ATA OR OTHER COMPATIBILITY)
- \* WIRE WRAP TAILS STYLE



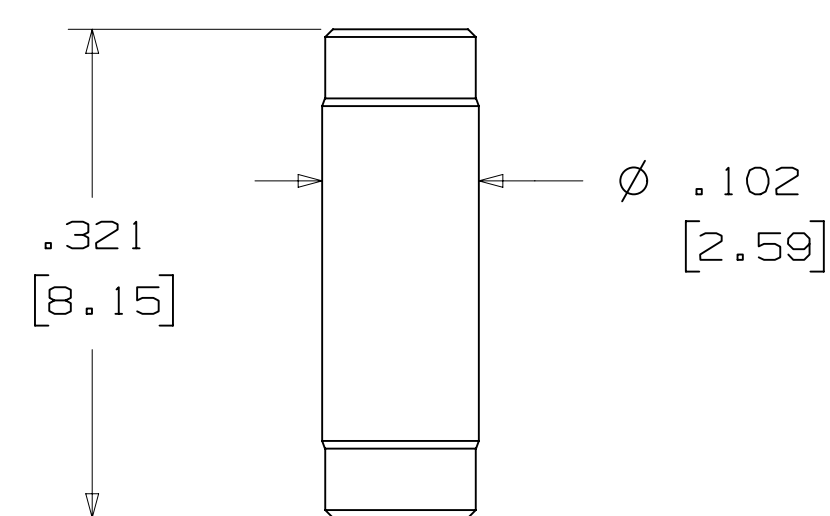
LONG SHORT

### SNAP-IN LATCHES

NOTE:  
SNAP-IN LATCHES CAN ONLY BE ORDERED SEPARATELY AND ARE THE CUSTOMERS RESPONSIBILITY TO INSTALL.



## POLARIZING POST



| 3M PART NO. | MATERIAL | COLOR |
|-------------|----------|-------|
| 3201-4      | LCP      | BLACK |

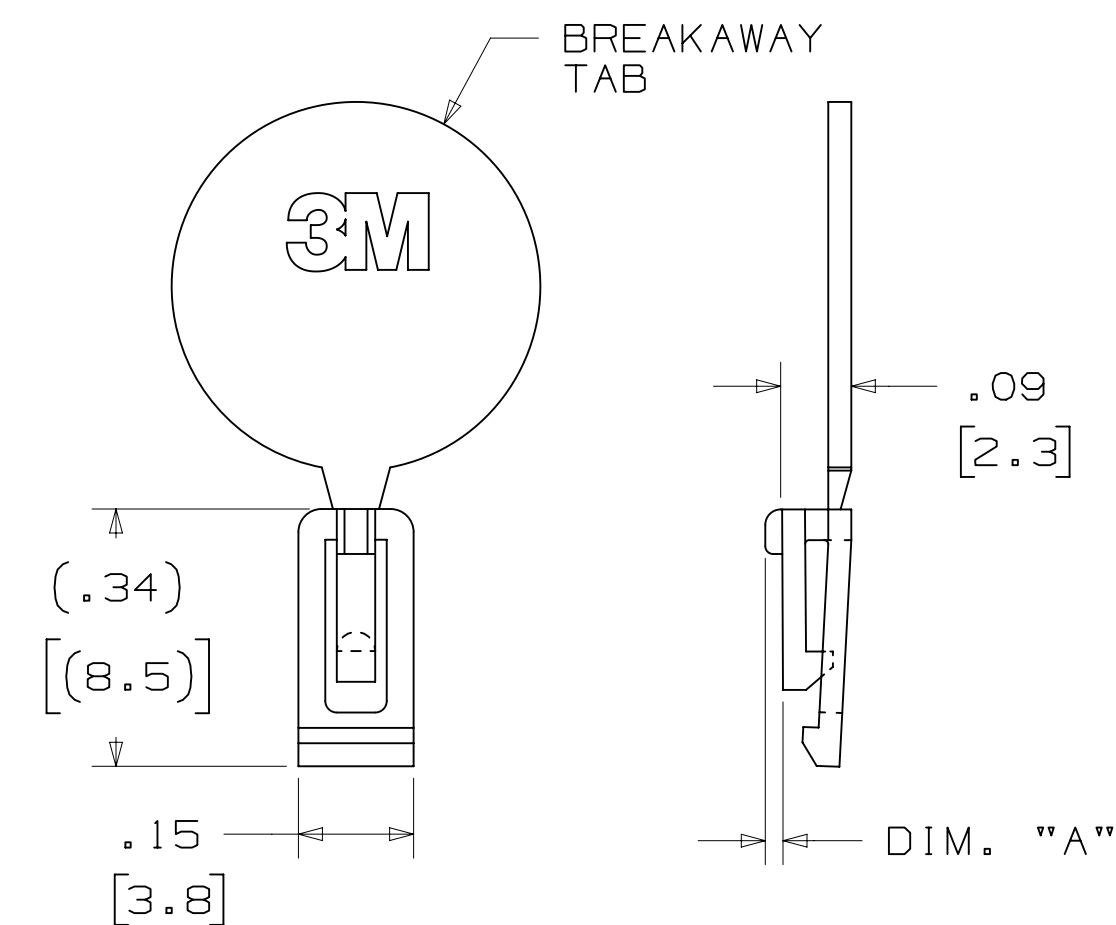
NOTE:  
INSERT POST INTO ONE MOUNTING HARDWARE HOLE ON BOTTOM OF HEADER. SET POST TO PROTRUDE .115 [2.92]

## (K2) OPTION

| 2500 & 3000 SERIES SHROUDED HEADER |                     |                  |    |    |    |  |
|------------------------------------|---------------------|------------------|----|----|----|--|
| TOTAL NO. OF PINS                  | NO. OF TAILS KINKED | POSITIONS KINKED |    |    |    |  |
| 10                                 | 4                   | 3                | 4  | 7  | 8  |  |
| 14                                 | 4                   | 3                | 4  | 11 | 12 |  |
| 16                                 | 4                   | 3                | 4  | 13 | 14 |  |
| 20                                 | 4                   | 3                | 4  | 17 | 18 |  |
| 26                                 | 4                   | 3                | 4  | 23 | 24 |  |
| 34                                 | 4                   | 7                | 8  | 27 | 28 |  |
| 40                                 | 4                   | 7                | 8  | 33 | 34 |  |
| 50                                 | 4                   | 7                | 8  | 43 | 44 |  |
| 60                                 | 4                   | 11               | 12 | 49 | 50 |  |
| 64                                 | 4                   | 11               | 12 | 53 | 54 |  |

KINKED TAIL DETAIL:  
- KINK IS LOCATED .05" BELOW BOTTOM SURFACE OF PLASTIC.  
- EXTERNAL RADIUS OF KINK TOWARD PART CENTERLINE.

## POLARIZING KEY



| 3M PART NO. | MATERIAL | COLOR | DIM. "A" |
|-------------|----------|-------|----------|
| N3518       | LCP      | BLACK | .02      |

NOTE:  
#2216 B/A SCOTCHWELD CAN BE USED TO ADHERE KEYS.

| REV | ECO   | ISSUE DATE AND DESCRIPTION             | DRFT | CHKD |
|-----|-------|--|------|------|
| H   | 60056 | MAR 06, 2015<br>REVISE ORDERING NUMBER | JNC  | RS   |
| G   | 56068 | AUG 05, 2014<br>REVISED AND REDRAWN    | JNC  | RS   |

| DESIGN REFERENCE                        | NEXT ASSEMBLY                       |
|---|-------------------------------------|
|   |                                     |
| <b>Division:</b> Interconnect Solutions | <b>Division Code:</b> EMSD          |
| <b>DO NOT SCALE DRAWING</b>             | <b>SCALE:</b> 4/1                   |
| <b>THIRD ANGLE PROJECTION</b>           | <b>TOLERANCES EXCEPT AS NOTED:</b>  |
| <b>INTERPRET PER ASME Y14.5 - 2009</b>  | <b>INCHES:</b>                      |
| <b>MAX. SURFACE ROUGHNESS:</b> SURFACES | 0 ±                                 |
| <b>MARKED ONLY</b>                      | .00 ± .01<br>.000 ± .005<br>.0000 ± |
|   | <b>MILLIMETERS:</b>                 |
|   | 0 ±                                 |
|   | .0 ± .3<br>.00 ± .13<br>.000 ±      |

| DATE                 | DATE               | DATE               |
|----------------------|--------------------|--------------------|
| CHECKED: CASTIGLIONE | DATE: AUG 05, 2014 | DATE: SEP 05, 2014 |
|                      |                    |                    |
|                      |                    |                    |

© 3M COPYRIGHT 2015  
This document and the information it contains are 3M property and may not be reproduced or further distributed without 3M permission, or used or disclosed other than for 3M authorized purposes. All rights reserved.

**3M** Center St. Paul, MN 55144

TITLE: **HEADER, 3-WALL, .100 X .100 LATCH/EJECTOR, STRAIGHT & RA**

CAGE NUMBER: **D78-5100-0771-5** H

MODEL: **3000 SERIES**

REV. **3** OF **4**

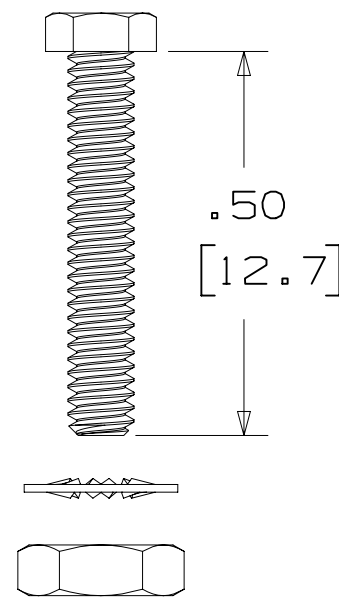
3M™ THREE-WALL HEADER, 3000 SERIES  
 .100" X .100" LATCH/EJECTOR, STRAIGHT AND RIGHT ANGLE

MOUNTING HARDWARE



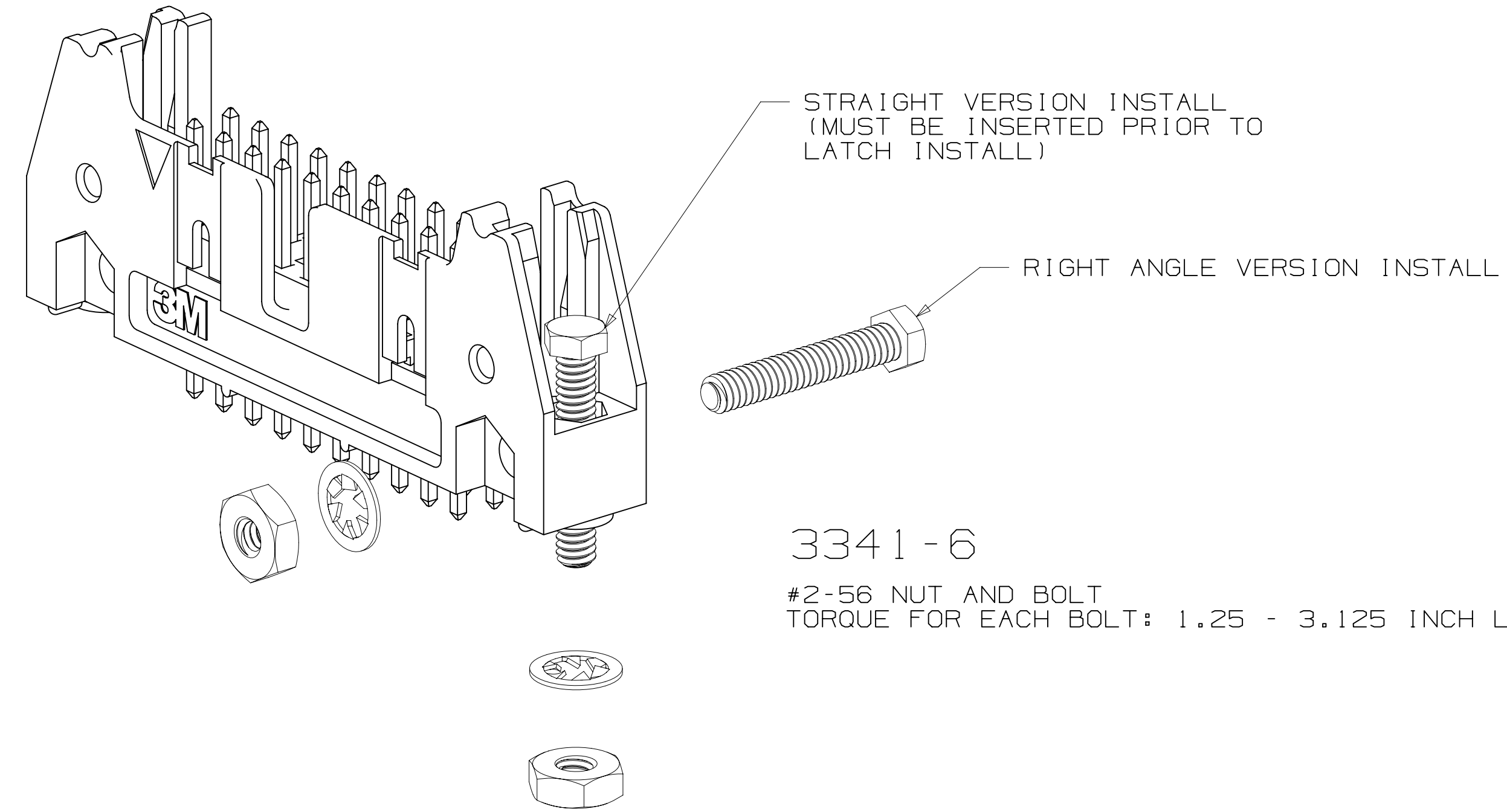
3341-5

(INSTALL FROM BOTTOM OF BOARD)  
 PANHEAD THREAD CUTTING SCREW:  
 #4-24 X 5/16"  
 TYPE: USA STD BT, FEDERAL B6  
 MATERIAL: STAINLESS STEEL



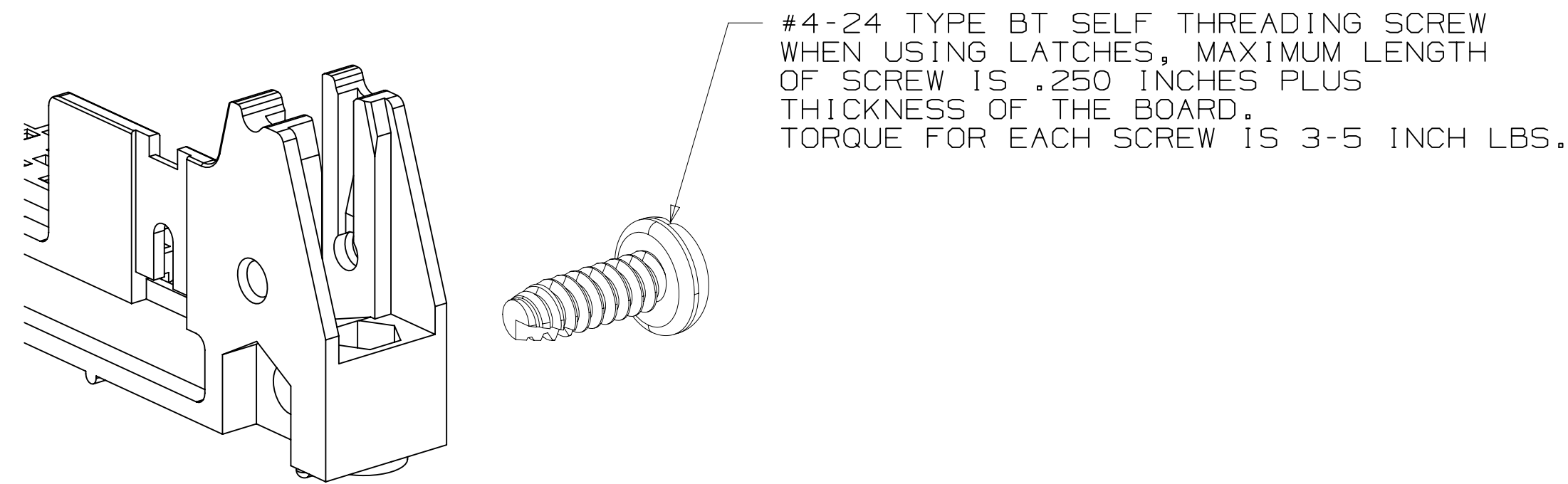
3341-6

HEX HEAD BOLT, NUT AND WASHER:  
 BOLT - #2-56 X 1/2"  
 MATERIAL: STAINLESS STEEL

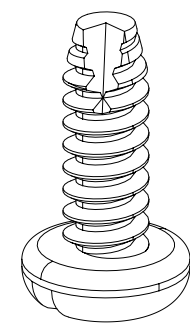


3341-6

#2-56 NUT AND BOLT  
 TORQUE FOR EACH BOLT: 1.25 - 3.125 INCH LBS.



3341-5



|                                 |               |  |                       |                            |      |              |
|---------------------------------|---------------|--|-----------------------|----------------------------|------|--------------|
| DESIGN REFERENCE                | NEXT ASSEMBLY | REV  | ECO                   | ISSUE DATE AND DESCRIPTION | DRFT | CHKD         |
|                                 |               |  |                       |                            |      |              |
| DATE                            | DATE          | DATE   | DATE                  | DATE                       | DATE | DATE         |
| CASTIGLIONE                     | AUG 05, 2014  | MFG  |                       |                            |      |              |
|                                 |               | R. SCHERER   |                       |                            |      | SEP 05, 2014 |
| DIVISION                        | DIVISION CODE | © 3M COPYRIGHT 2015  |                       |                            |      |              |
| Interconnect Solutions          | EMSD          | This document and the information it contains are 3M property and may not be reproduced or further distributed without 3M permission, or used or disclosed other than for 3M authorized purposes. All rights reserved. |                       |                            |      |              |
| DO NOT SCALE DRAWING            | SCALE 4/1     | TOLERANCES EXCEPT AS NOTED   |                       |                            |      |              |
|                                 |               | INCHES   | TITLE                 |                            |      |              |
|                                 |               | .00 ± .01  | HEADER, 3-WALL, .100  |                            |      |              |
|                                 |               | .000 ± .005  | X .100 LATCH/EJECTOR, |                            |      |              |
|                                 |               | .0000 ±  | STRAIGHT & RA         |                            |      |              |
| THIRD ANGLE PROJECTION          |               | MILLIMETERS  | CAGE NUMBER           |                            |      |              |
|                                 |               | 0 ±  | D 78-5100-0771-5      |                            |      |              |
| INTERPRET PER ASME Y14.5 - 2009 |               | .0 ± .3  | DRAWING NO.           |                            |      |              |
|                                 |               | .00 ± .13  | H                     |                            |      |              |
| MAX SURFACE ROUGHNESS           |               | .000 ±   | REV.                  |                            |      |              |
| UNMARKED SURFACES               |               |  | SHT 4 OF 4            |                            |      |              |
| MARKED ONLY                     |               |  | MODEL                 |                            |      |              |
|                                 |               |  | 3000 SERIES           |                            |      |              |

78-5100-0771-5  
 H  
 12:53 PM UTC-06:00  
 3/6/2015

Компания «Океан Электроники» предлагает заключение долгосрочных отношений при поставках импортных электронных компонентов на взаимовыгодных условиях!

Наши преимущества:

- Поставка оригинальных импортных электронных компонентов напрямую с производств Америки, Европы и Азии, а так же с крупнейших складов мира;
- Широкая линейка поставок активных и пассивных импортных электронных компонентов (более 30 млн. наименований);
- Поставка сложных, дефицитных, либо снятых с производства позиций;
- Оперативные сроки поставки под заказ (от 5 рабочих дней);
- Экспресс доставка в любую точку России;
- Помощь Конструкторского Отдела и консультации квалифицированных инженеров;
- Техническая поддержка проекта, помощь в подборе аналогов, поставка прототипов;
- Поставка электронных компонентов под контролем ВП;
- Система менеджмента качества сертифицирована по Международному стандарту ISO 9001;
- При необходимости вся продукция военного и аэрокосмического назначения проходит испытания и сертификацию в лаборатории (по согласованию с заказчиком);
- Поставка специализированных компонентов военного и аэрокосмического уровня качества (Xilinx, Altera, Analog Devices, Intersil, Interpoint, Microsemi, Actel, Aeroflex, Peregrine, VPT, Syfer, Eurofarad, Texas Instruments, MS Kennedy, Miteq, Cobham, E2V, MA-COM, Hittite, Mini-Circuits, General Dynamics и др.);

Компания «Океан Электроники» является официальным дистрибьютором и эксклюзивным представителем в России одного из крупнейших производителей разъемов военного и аэрокосмического назначения «JONHON», а так же официальным дистрибьютором и эксклюзивным представителем в России производителя высокотехнологичных и надежных решений для передачи СВЧ сигналов «FORSTAR».



## JONHON

«JONHON» (основан в 1970 г.)

Разъемы специального, военного и аэрокосмического назначения:

(Применяются в военной, авиационной, аэрокосмической, морской, железнодорожной, горно- и нефтедобывающей отраслях промышленности)

«FORSTAR» (основан в 1998 г.)

ВЧ соединители, коаксиальные кабели, кабельные сборки и микроволновые компоненты:

(Применяются в телекоммуникациях гражданского и специального назначения, в средствах связи, РЛС, а так же военной, авиационной и аэрокосмической отраслях промышленности).



Телефон: 8 (812) 309-75-97 (многоканальный)

Факс: 8 (812) 320-03-32

Электронная почта: [ocean@oceanchips.ru](mailto:ocean@oceanchips.ru)

Web: <http://oceanchips.ru/>

Адрес: 198099, г. Санкт-Петербург, ул. Калинина, д. 2, корп. 4, лит. А