

# 2460

## SourceMeter® SMU Instrument 100 Watts, 7 Amps



The Model 2460 High Current SourceMeter® Source Measure Unit (SMU) Instrument brings advanced Touch, Test, Invent® technology right to your fingertips. It combines an innovative graphical user interface (GUI) with capacitive touchscreen technology to make testing intuitive and minimize the learning curve to help engineers and scientists learn faster, work smarter, and invent easier. With its 7A DC and pulse current capability, the Model 2460 is optimized for characterizing and testing high power materials, devices, and modules such as silicon carbide (SiC), gallium nitride (GaN), DC-DC converters, power MOSFETs, solar cells and panels, LEDs and lighting systems, electrochemical cells and batteries, and much more. These new capabilities, combined with Keithley's decades of expertise in developing high precision, high accuracy SMU instruments, will make the Model 2460 a "go-to instrument" for high current applications in the lab and in the rack for years to come.

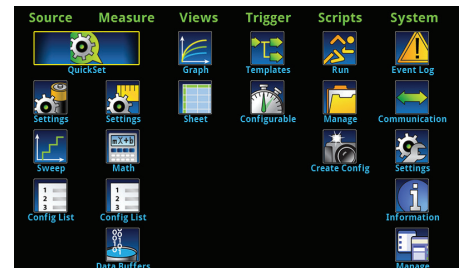
- One tightly coupled instrument that combines capabilities from analyzers, curve tracers, and I-V systems at a fraction of their cost
- Wide coverage up to 105V, 7A DC/7A pulse, 100W max.
- Five-inch, high resolution capacitive touchscreen GUI
- 0.012% basic measure accuracy with 6½-digit resolution
- Source and sink (4-quadrant) operation
- Four "Quickset" modes for fast setup and measurements
- Context-sensitive help function
- Front panel input banana jacks; rear panel input mass termination screw connections
- 2460 SCPI and TSP® scripting programming modes
- Front-panel USB 2.0 memory I/O port for transferring data, test scripts, or test configurations

### Learn Faster, Work Smarter, Invent Easier

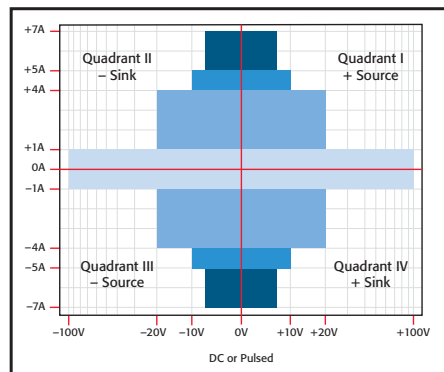
The Model 2460 features a five-inch, full-color, high resolution touchscreen that supports intuitive operation, helps operators become familiar with the instrument quickly, and optimizes overall speed and productivity. A simple icon-based menu structure reduces the number of steps required to configure a test by as much as 50 percent and eliminates the cumbersome multi-layer menu structures typically used on soft-key instruments. Built-in, context-sensitive help supports intuitive operation and minimizes the need to review a separate manual. These capabilities, combined with the Model 2460's high versatility, simplify its operation in both basic and advanced measurement applications, regardless of the user's previous experience in working with SMU instruments.



2460 main home screen



The Model 2460's icon-based menu structure helps even novice users configure tests quickly and confidently.



Model 2460 power envelope.

### All-in-One SMU Instrument

The Model 2460, built on the fourth generation of the award-winning SourceMeter SMU platform, leverages the proven capabilities of previously introduced high current SMU instruments from Keithley, including the Models 2420, 2425, and 2440. It offers a highly flexible, four-quadrant voltage and current source/load coupled with precision voltage and current measurements. This all-in-one instrument can be used as a:

- Precision power supply with V and I readback
- True current source
- Digital multimeter (DCV, DCI, ohms, and power with 6½-digit resolution)
- Precision electronic load
- Trigger controller

1.888.KEITHLEY (U.S. only)

[www.keithley.com](http://www.keithley.com)

**KEITHLEY**  
A Tektronix Company

# 2460

## SourceMeter® SMU Instrument 100 Watts, 7 Amps

### Ordering Information

- 2460** 100V, 7A, 100W SourceMeter Instrument
- 2460-NFP** 100V, 7A, 100W SourceMeter Instrument, with No Front Panel
- 2460-RACK** 100V, 7A, 100W SourceMeter Instrument, without Handle
- 2460-NFP-RACK** 100V, 7A, 100W SourceMeter Instrument, with No Front Panel and No Handle

### Accessories Supplied

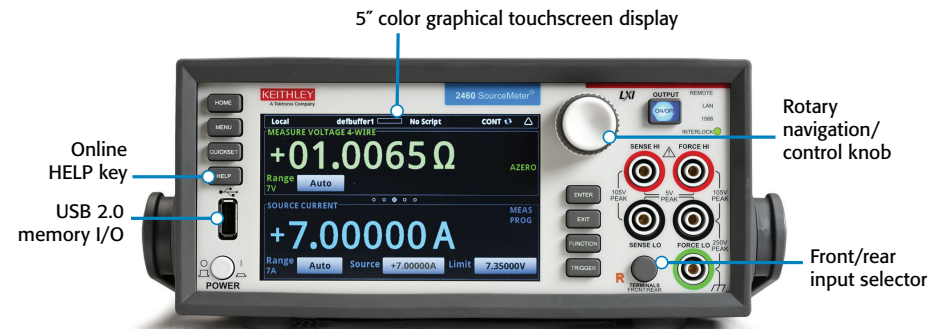
- 2460-KIT** Rear Panel Mating Mass Terminated Screw Connector
- 8608** High Performance Test Leads
- USB-B-1** USB Cable, Type A to Type B, 1m (3.3 ft)
- CS-1616-3** Safety Interlock Mating Connector
- CA-180-3A** TSP-Link/Ethernet Cable
- Documentation CD**
- 2460 QuickStart Guide**
- Test Script Builder Software** (available at [www.keithley.com](http://www.keithley.com))
- KickStart Startup Software** (available at [www.keithley.com](http://www.keithley.com))
- LabVIEW and IVI Drivers** (available at [www.keithley.com](http://www.keithley.com))

Model 2420/2425/2440	Model 2460
Max Voltage: 60V/100V/40V	Max Voltage: 100V
Max Current: 3A/3A/5A	Max Current: 7A
DC Power: 60W/100W/50W	DC Power: 100W
Wideband Noise: 10mVrms ttyp.	Wideband Noise: 2mVrms typ.
Sweep Types: Linear, Log, Custom, Source-Memory	Sweep Types: Linear, Log, Dual Linear, Dual Log, Custom
5000 Point Reading Buffer	>250,000 Point Reading Buffer
>2000 Readings/second	>3000 Readings/second
SCPI Programming	SCPI Programming + TSP Scripting
GPIB, RS-232	GPIB, USB, Ethernet (LXI)
Front/Rear Banana Jacks	Front: Banana Jacks Rear: Mass Screw Terminal Connection

Comparison of Models 2420, 2425, and 2440 with Model 2460.

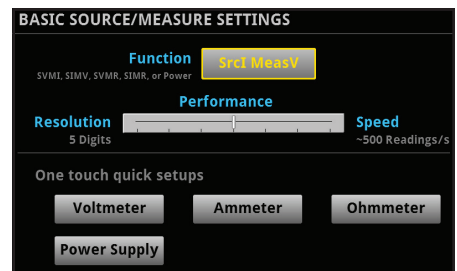
### Ease of Use Beyond the Touchscreen

In addition to its advanced touchscreen, the Model 2460's front panel offers a variety of features that enhance its speed, user-friendliness, and learnability, including a USB 2.0 memory I/O port, a HELP key, a rotary navigation/control knob, a front/rear input selector button, and banana jacks for basic bench applications. The USB 2.0 memory port simplifies storing test results and instrument configurations, uploading test scripts into the instrument, and installing system upgrades. All front-panel buttons are backlit to enhance visibility in low-light environments.



The Model 2460's high resolution, capacitive touchscreen and front panel controls allow for intuitive operation, even by novice users.

Four "Quickset" modes simplify instrument setup. With one touch, the instrument can be quickly configured for various operating modes without the need to configure the instrument indirectly for this operation.



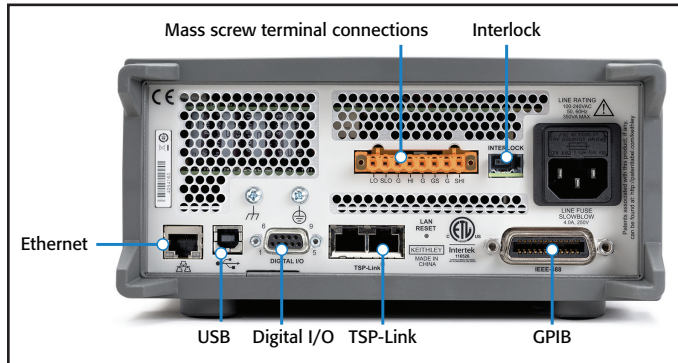
One-touch Quickset modes speed measurement setups and minimize the time to measurements.

1.888.KEITHLEY (U.S. only)

[www.keithley.com](http://www.keithley.com)

### Comprehensive Built-in Connectivity

Rear panel access to rear-input mass termination connector, remote control interfaces (GPIB, USB 2.0, and LXI/Ethernet), D-sub 9-pin digital I/O port (for internal/external trigger signals and handler control), instrument interlock control, and TSP-Link® jacks make it simple to configure multiple instrument test solutions and eliminate the need to invest in additional adapter accessories.



Model 2460 rear panel connections are optimized to maintain signal integrity and speed system setup.

### Convert Raw Data to Information

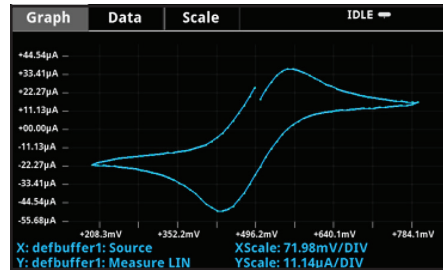
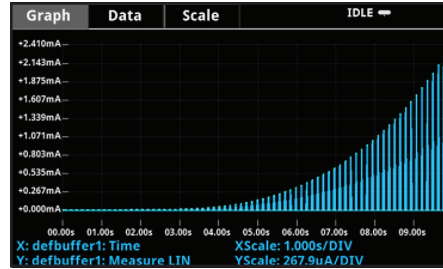
A full graphical plotting window converts raw data and displays it immediately as useful information, such as semiconductor I-V curves and voltammograms. Using the Model 2460's Sheet view, test data can also be displayed in tabular form. The instrument supports exporting data to a spreadsheet for further analysis, dramatically improving productivity for research, benchtop testing, device qualification, and debugging.

### TriggerFlow® Building Blocks for Instrument Control and Execution

The Model 2460 incorporates Keithley's TriggerFlow triggering system, which provides user control over instrument execution. TriggerFlow diagrams are created in much the same way that flow charts are developed, using four fundamental building block types:

- Wait – Waits for an event to occur before the flow continues
- Branch – Branches when a condition has been satisfied
- Action – Initiates an action in the instrument, for example, measure, source, delay, set digital I/O, etc.
- Notify – Notifies other equipment that an event has occurred

A TriggerFlow model using a combination of these building blocks can be created from the front panel or by sending remote commands. With the TriggerFlow system, users can build triggering models from very simple to complex with up to 255 block levels. The Model 2460 also includes basic triggering functions, including immediate, timer, and manual triggering.

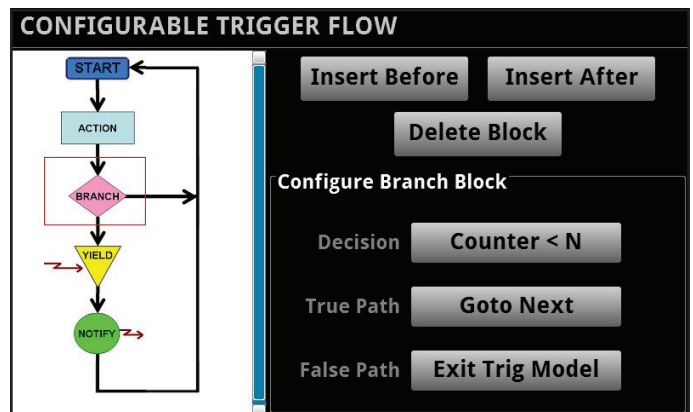


DATA SHEET

Buffer: defbuffer1 Jump to Refresh

	Time	Source	Measure
1	08:27 10:32	+7.000000 A	+01.0054 Ω
2	10:32:43.5	+7.000000 A	+01.0054 Ω
3	10:32:43.6	+7.000000 A	+01.0054 Ω
4	10:32:43.8	+7.000000 A	+01.0054 Ω
5	10:32:43.9	+7.000000 A	+01.0054 Ω
6	10:32:44.1	+7.000000 A	+01.0054 Ω
7	10:32:44.2	+7.000000 A	+01.0054 Ω
8	10:32:44.4	+7.000000 A	+01.0054 Ω
9	10:32:44.5	+7.000000 A	+01.0054 Ω

Built-in data display, charting, and spreadsheet export functions simplify converting test results into useful information.



TriggerFlow building blocks allow creating triggering models that range from very simple to highly complex.



# 2460

# SourceMeter® SMU Instrument

## 100 Watt, 7 Amps

### Unmatched System Integration and Programming Flexibility

When a Model 2460 is configured into a multi-channel I-V test system, its embedded Test Script Processor (TSP®) allows it to run test scripts, so users can create powerful measurement applications with significantly reduced development times. TSP technology also offers channel expansion without a mainframe. Keithley's TSP-Link® channel expansion bus, which uses a 100 Base T Ethernet cable, can connect multiple Model 2460s and other TSP instruments such as Keithley's Model 2450 SourceMeter SMU Instruments, Series 2600B System SourceMeter SMU instruments, and Series 3700A Switch/Multimeter systems in a master-slave configuration that operates as one integrated system. The TSP-Link expansion bus supports up to 32 units per GPIB or IP address, making it easy to scale a system to fit an application's particular requirements. The Model 2460 also includes a SCPI programming mode that takes advantage of all of the instrument's capabilities.

### Parallel Test Capability

The TSP technology in the Model 2460 supports testing multiple devices in parallel to meet the needs of device research, advanced semiconductor lab applications, and even high throughput production test. This parallel testing capability allows each instrument in the system to run its own complete test sequence, creating a fully multi-threaded test environment. The number of tests that can be run in parallel on a Model 2460 can be as high as the number of instruments in the system.

### Free Instrument Control Start-up Software

The Model 2460 comes with KickStart instrument control/start-up software, which lets users start taking measurements in minutes without programming. In most cases, users merely need to make some quick measurements, graph the data, and store the data to disk for later analysis in software environments such as Excel. KickStart offers:

- Instrument configuration control to perform I-V characterization
- Native X-Y graphing, panning, and zooming
- Spreadsheet/tabular viewing of data
- Saving and exporting data for further analysis
- Saving of test setups
- Screenshot capturing of graph
- Annotation of tests
- Command line dialog for sending and receiving data
- HTML help
- GPIB, USB 2.0, Ethernet compliance

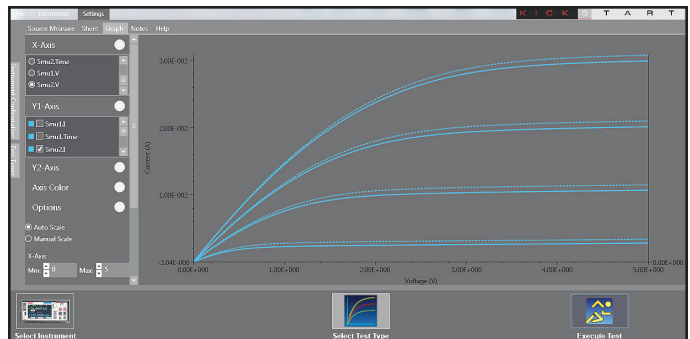
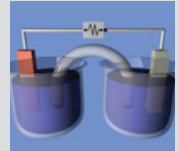
### Simplified Programming with Ready-to-Use Instrument Drivers

For those who prefer to create their own customized application software, native National Instruments LabVIEW® drivers, as well as IVI-C and IVI-COM drivers are available at [www.keithley.com](http://www.keithley.com).

### TYPICAL APPLICATIONS

**Ideal for current/voltage characterization and functional test of a wide range of modern electronic devices:**

- **Power semiconductors and materials**
  - SiC, GaN
  - IGBTs
  - Power MOSFETs
  - Thyristors
- **Power devices**
  - Telecom power management chipsets
  - DC-DC converters
- **Electrochemistry**
  - Galvanic cycling
  - Cyclic voltammetry
  - Electro-deposition
- **Energy generation**
  - Solar cells
  - Batteries
- **Efficient energy consumption**
  - LEDs/AMOLEDs
  - Automotive modules
  - Power management modules



**KickStart start-up software lets users be ready to take measurements in minutes.**

### ACCESSORIES AVAILABLE

#### TEST LEADS AND PROBES

1754	2-wire Universal 10-Piece Test Lead Kit
5805	Kelvin (4-Wire) Spring-Loaded Probes
5808	Low Cost Single-pin Kelvin Probe Set
5809	Low Cost Kelvin Clip Lead Set
8605	High Performance Modular Test Leads
8606	High Performance Modular Probe Kit
8608	High Performance Clip Lead Set

#### CABLES, CONNECTORS, ADAPTERS

2460-BAN	Screw Terminal Connector to Banana Cable
2460-KIT	Mating Mass Termination Connector
8607	2-Wire, 1000V Banana Cables, 1m (3.3 ft)
CS-1616-3	Safety Interlock Mating Connector

#### COMMUNICATION INTERFACES & CABLES

7007-1	Shielded GPIB Cable, 1m (3.3 ft)
7007-2	Shielded GPIB Cable, 1m (6.6 ft)
CA-180-3A	CAT5 Crossover Cable for TSP-Link/Ethernet
KPCI-488LPA	IEEE-488 Interface for PCI Bus
KUSB-488B	IEEE-488 USB-to-GPIB Interface Adapter
USB-B-1	USB Cable, Type A to Type B, 1m (3.3 ft)

#### TRIGGERING AND CONTROL

2450-TLINK	DB-9 to Trigger Link Connector Adapter.
8501-1	Trigger Link Cable, DIN-to-DIN, 1m (3.3 ft)
8501-2	Trigger Link Cable, DIN-to-DIN, 2m (6.6 ft)

#### RACK MOUNT KITS

4299-8	Single Fixed Rack Mount Kit
4299-9	Dual Fixed Rack Mount Kit
4299-10	Dual Fixed Rack Mount Kit. Mount one 2460 and one Series 26xxB
4299-11	Dual Fixed Rack Mount Kit. Mount one 2460 and one Series 2400, Series 2000, etc.
2450-BenchKit	Ears and Handle for 2460-NFP-RACK and 2460-RACK models

### SERVICES AVAILABLE

2460-3Y-EW	1 Year Factory Warranty extended to 3 years from date of shipment
2460-5Y-EW	1 Year Factory Warranty extended to 5 years from date of shipment
C/2460-3Y-17025	KeithleyCare® 3 Year ISO 17025 Calibration Plan
C/2460-3Y-DATA	KeithleyCare 3 Year Calibration w/Data Plan
C/2460-3Y-STD	KeithleyCare 3 Year Std. Calibration Plan
C/2460-5Y-17025	KeithleyCare 5 Year ISO 17025 Calibration Plan
C/2460-5Y-DATA	KeithleyCare 5 Year Calibration w/Data Plan
C/2460-5Y-STD	KeithleyCare 5 Year Std. Calibration Plan
C/NEW DATA	Calibration Data for New Units
C/NEW DATA ISO	ISO-17025 Calibration Data for New Units

### Voltage Specifications <sup>1, 2</sup>

Range	Source				Measure <sup>3</sup>		
	Max. Current	Resolution	Accuracy (23° ±5°C), 1 Year ±(% setting+volts)	Noise (RMS) (<10Hz)	Resolution <sup>4</sup>	Input Resistance	Accuracy (23° ±5°C), 1 Year ±(% rdg. + volts)
200.0000 mV	7.35 A	5 µV	0.015 % + 200 µV	1 µV	100 nV	>10 GΩ	0.012 % + 200 µV
2.000000 V	7.35 A	50 µV	0.015 % + 300 µV	10 µV	1 µV	>10 GΩ	0.012 % + 300 µV
7.000000 V	7.35 A	250 µV	0.015 % + 2.4 mV	100 µV	1 µV	>10 GΩ	0.015 % + 1 mV
10.00000 V	5.25 A	500 µV	0.015 % + 2.4 mV	100 µV	10 µV	>10 GΩ	0.015 % + 1 mV
20.00000 V	4.20 A	500 µV	0.015 % + 2.4 mV	100 µV	10 µV	>10 GΩ	0.015 % + 1 mV
100.0000 V	1.05 A	2.5 mV	0.015 % + 15 mV	1 mV	100 µV	>10 GΩ	0.015 % + 5 mV

### Current Specifications <sup>1, 2, 5</sup>

Range	Source				Measure <sup>3</sup>		
	Max. Voltage	Resolution	Accuracy (23° ±5°C), 1 Year ±(% setting+amps)	Noise (RMS) (<10Hz)	Resolution <sup>4</sup>	Voltage Burden <sup>6</sup>	Accuracy (23° ±5°C), 1 Year ±(% rdg. + amps)
1.000000 µA	105 V	50 pA	0.025 % + 1 nA	40 pA	10 pA	<100 µV	0.025 % + 700 pA
10.00000 µA	105 V	500 pA	0.025 % + 1.5 nA	40 pA	10 pA	<100 µV	0.025 % + 1 nA
100.0000 µA	105 V	5 nA	0.020 % + 15 nA	100 pA	100 pA	<100 µV	0.020 % + 10 nA
1.000000 mA	105 V	50 nA	0.020 % + 150 nA	1 nA	1 nA	<100 µV	0.020 % + 100 nA
10.00000 mA	105 V	500 nA	0.020 % + 1.5 µA	10 nA	10 nA	<100 µV	0.020 % + 1 µA
100.0000 mA	105 V	5 µA	0.020 % + 15 µA	100 nA	100 nA	<100 µV	0.020 % + 10 µA
1.000000 A	105 V	50 µA	0.050 % + 750 µA	5 µA	1 µA	<100 µV	0.050 % + 500 µA
4.000000 A	21 V	250 µA	0.100 % + 3 mA	25 µA	1 µA	<100 µV	0.100 % + 2.5 mA
5.000000 A	10.5 V	250 µA	0.100 % + 3 mA	25 µA	1 µA	<100 µV	0.100 % + 2.5 mA
7.000000 A	7.35 V	500 µA	0.150 % + 6 mA	125 µA	1 µA	<100 µV	0.150 % + 5 mA

TEMPERATURE COEFFICIENT (0°–18°C and 28°–50°C): ±(0.10 × accuracy specification)/°C.

- Speed = 1 PLC.
- All specifications are guaranteed with output ON.
- Accuracies apply to 2- and 4-wire mode when properly zeroed.
- 6.5-digit measure resolution.
- Accuracy specifications guaranteed when using 2460-KIT screw terminal accessory.
- Four-wire mode.

### Resistance Measurement Accuracy (Local or Remote Sense) <sup>7, 8, 9</sup>

Range	Default Resolution <sup>10</sup>	Default Test Current	Normal Accuracy	Enhanced Accuracy <sup>11</sup>
			(23°C ±5°C) 1 Year, ±(% rdg. + ohms)	(23°C ±5°C) 1 Year, ±(% rdg. + ohms)
<2.000000 Ω <sup>12</sup>	1 µΩ	User defined	Source I <sub>ACC</sub> + Meas. V <sub>ACC</sub>	Meas. I <sub>ACC</sub> + Meas. V <sub>ACC</sub>
20.00000 Ω	10 µΩ	100 mA	0.05 % + 0.003 Ω	0.04 % + 0.001 Ω
200.0000 Ω	100 µΩ	10 mA	0.05 % + 0.03 Ω	0.04 % + 0.01 Ω
2.000000 kΩ	1 mΩ	1 mA	0.05 % + 0.3 Ω	0.04 % + 0.1 Ω
20.00000 kΩ	10 mΩ	100 µA	0.05 % + 3 Ω	0.04 % + 1 Ω
200.0000 kΩ	100 mΩ	10 µA	0.05 % + 30 Ω	0.05 % + 10 Ω
2.000000 MΩ	1 Ω	10 µA	0.06 % + 100 Ω	0.06 % + 50 Ω
20.00000 MΩ	10 Ω	1 µA	0.14 % + 1000 Ω	0.12 % + 500 Ω
>20.0000 MΩ <sup>12</sup>	—	User defined	Source I <sub>ACC</sub> + Meas. V <sub>ACC</sub>	Meas. I <sub>ACC</sub> + Meas. V <sub>ACC</sub>

TEMPERATURE COEFFICIENT (0°–18°C and 28°–50°C): ±(0.10 × accuracy specification)/°C.

#### SOURCE CURRENT, MEASURE RESISTANCE MODE:

Total uncertainty = I source accuracy + V measure accuracy (4-wire remote sense).

#### SOURCE VOLTAGE, MEASURE RESISTANCE MODE:

Total uncertainty = V source accuracy + I measure accuracy (4-wire remote sense).

- Speed = 1 PLC.
- All specifications are guaranteed with output ON.
- Accuracies apply to 2- and 4-wire mode when properly zeroed.
- 6.5-digit measure resolution.
- Source readback enabled. Offset compensation ON.
- Source current, measure resistance or source voltage, measure resistance only.

## SUPPLEMENTAL CHARACTERISTICS

<b>MAX. OUTPUT POWER:</b>	100W, four-quadrant source or sink operation.												
<b>SOURCE LIMITS:</b>	<b>Vsource:</b> $\pm 7.35V$ ( $\leq 7A$ range), $\pm 10.5V$ ( $\leq 5A$ range), $\pm 21V$ ( $\leq 4A$ range), $\pm 105V$ ( $\leq 1A$ range). <b>Isource:</b> $\pm 7.35A$ ( $\leq 7V$ range), $\pm 5.25mA$ ( $\leq 10V$ range), $\pm 4.2A$ ( $\leq 20V$ range), $\pm 1.05mA$ ( $\leq 100V$ range).												
<b>OVERRANGE:</b>	105% of range, source and measure.												
<b>REGULATION:</b>	<b>Voltage: Line:</b> 0.01% of range. <b>Load:</b> 0.01% of range + 100 $\mu V$ . <b>Current: Line:</b> 0.01% of range. <b>Load:</b> 0.01% of range + 100pA.												
<b>SOURCE LIMITS:</b>	<b>Voltage Source Current Limit:</b> Bipolar current limit set with single value. Min. 10% of range. <b>Current Source Voltage Limit:</b> Bipolar voltage limit set with single value. Min. 10% of range.												
<b>V-LIMIT / I-LIMIT ACCURACY:</b>	Add 0.3% of setting and $\pm 0.02\%$ of reading to base specification.												
<b>OVERSHOOT:</b>	<b>Voltage Source:</b> $< 0.1\%$ typical (full scale step, resistive load, 20V range, 10mA I-Limit). <b>Current Source:</b> $< 0.1\%$ typical (1mA step, $R_{load} = 10k\Omega$ , 20V range)												
<b>RANGE CHANGE OVERSHOOT:</b>	Overshoot into a fully resistive 100k $\Omega$ load, 10Hz to 20MHz BW, adjacent ranges: $< 250mV$ typical												
<b>OUTPUT SETTling TIME:</b>	Time required to reach 0.1% of final value, 20V range, 100mA I-Limit: $< 200\mu s$ typical.												
<b>MAXIMUM SLEW RATE:</b>	1V per $\mu s$ , 100V range, 100mA limit into a 20k $\Omega$ load (typical). 0.6V per $\mu s$ , 20V range, 100mA limit into a 20k $\Omega$ load (typical).												
<b>OVER VOLTAGE PROTECTION:</b>	User selectable values, 5% $\pm 0.5V$ tolerance. Factory default = none.												
<b>VOLTAGE SOURCE NOISE:</b>	<b>10Hz–20MHz (RMS):</b> $< 4.5mV$ typical into a resistive load.												
<b>COMMON MODE VOLTAGE:</b>	250V DC.												
<b>COMMON MODE ISOLATION:</b>	$> 1G\Omega$ , $< 1000pF$ .												
<b>NOISE REJECTION (TYPICAL):</b>	<table border="1"> <thead> <tr> <th>NPLC</th> <th>NMRR</th> <th>CMRR</th> </tr> </thead> <tbody> <tr> <td>0.01</td> <td>—</td> <td>60 dB</td> </tr> <tr> <td>0.1</td> <td>—</td> <td>60 dB</td> </tr> <tr> <td>1</td> <td>60 dB</td> <td>100 dB</td> </tr> </tbody> </table>	NPLC	NMRR	CMRR	0.01	—	60 dB	0.1	—	60 dB	1	60 dB	100 dB
NPLC	NMRR	CMRR											
0.01	—	60 dB											
0.1	—	60 dB											
1	60 dB	100 dB											
<b>LOAD IMPEDANCE:</b>	<b>Normal Mode:</b> 20nF typical. <b>High Capacitance Mode:</b> Stable into 50 $\mu F$ typical. High-C mode valid for $\geq 100\mu A$ ranges.												
<b>MAX. VOLTAGE DROP BETWEEN FORCE and SENSE TERMINALS:</b>	5V.												
<b>MAX. SENSE LEAD RESISTANCE:</b>	1M $\Omega$ for rated accuracy.												
<b>SENSE INPUT IMPEDANCE:</b>	$> 10G\Omega$ .												
<b>GUARD OFFSET VOLTAGE:</b>	$< 300\mu V$ , typical												

System Measurement Speeds <sup>13</sup>

Reading rates (readings per second) typical for 60Hz (50Hz), script (TSP®) programmed

NPLC	Trigger Origin	Measure to Memory	Measure to GPIB/USB/LAN	Source Measure to Memory	Source Measure to GPIB/USB/LAN
0.01 NPLC	Internal	3050 (2800)	2800 (2500)	1700 (1600)	1650 (1550)
0.01 NPLC	External	2300 (2100)	2150 (2000)	1650 (1550)	1600 (1450)
0.1 NPLC	Internal	540 (460)	530 (450)	470 (410)	470 (400)
0.1 NPLC	External	500 (420)	500 (420)	460 (390)	450 (350)
1 NPLC	Internal	59 (49)	59 (49)	58 (48)	58 (48)
1 NPLC	External	58 (48)	58 (48)	57 (48)	57 (46)

Reading rates (readings per second) typical for 60Hz (50Hz), SCPI programmed

NPLC	Trigger Origin	Measure to Memory	Measure to GPIB/USB/LAN	Source Measure to Memory	Source Measure to GPIB/USB/LAN
0.01 NPLC	Internal	3000 (2800)	3000 (2790)	1700 (1600)	1550 (1500)
0.01 NPLC	External	2330 (2150)	2330 (2150)	1650 (1550)	1500 (1450)
0.1 NPLC	Internal	540 (460)	540 (460)	470 (410)	460 (400)
0.1 NPLC	External	510 (430)	510 (430)	470 (400)	460 (390)
1 NPLC	Internal	59 (49)	59 (49)	58 (48)	58 (48)
1 NPLC	External	58 (49)	58 (49)	58 (48)	58 (48)

# 2460

# SourceMeter® SMU Instrument

## 100 Watts, 7 Amps

### GENERAL CHARACTERISTICS (default mode unless specified)

**FACTORY DEFAULT STANDARD POWER-UP:** SCPI MODE.

**SOURCE OUTPUT MODES:** Fixed DC Level, Memory/Configuration List (mixed function), Sweep (linear and logarithmic), Sweep (dual linear and dual logarithmic).

**MEMORY BUFFER:** >250,000 readings. Includes selected measured value(s) and time stamp.

**REAL-TIME CLOCK:** Lithium battery backup (3 yr. + battery life).

**REMOTE INTERFACES:**

**GPIO:** IEEE-488.1 compliant. Supports IEEE-488.2 common commands and status model topology.

**USB Device (rear panel, type B):** 2.0 Full Speed USBTMC.

**USB Host (front panel, type A):** USB 2.0, support for flash drives, FAT32.

**Ethernet:** RJ-45 (10/100BT)

**DIGITAL I/O INTERFACE:**

**Lines:** 6 Input/Output user defined for digital I/O or triggering

**Connector:** 9-pin female D

**Input Signal Levels:** 0.7V (maximum logic low), 3.7V (minimum logic high)

**Input Voltage Limits:** -0.25V (Abs. minimum), +5.25V (Abs. maximum)

**Maximum Source Current:** +2.0mA @ >2.7V (PS mode) and sink (4-quadrant) operation

**Maximum Sink Current:** -50mA @ 0.7V (per pin, solid-state fuse protected)

**5V Power Supply Pin:** Limited to 500mA @ >4V (solid-state fuse protected)

**Handler:** User definable Start of Test, End of Test, 4 category bits

**PROGRAMMABILITY:** SCPI or TSP command sets.

**TSP MODE:** Embedded Test Script Processor (TSP) accessible from any host interface.

**IP CONFIGURATION:** Static or DHCP

**EXPANSION INTERFACE:** The TSP-Link expansion interface allows TSP enabled instruments to trigger and communicate with each other.

**LXI COMPLIANCE:** 1.4 LXI Core 2011.

**DISPLAY:** 5 inch capacitive touch, color TFT WVGA (800×480) with LED backlight.

**INPUT SIGNAL CONNECTIONS:** **Front:** Banana. **Rear:** Mass termination screw terminal.

**INTERLOCK:** Active High Input.

**COOLING:** Forced air, variable speed.

**OVER TEMPERATURE PROTECTION:** Internally sensed temperature overload puts unit in standby mode.

**POWER SUPPLY:** 100V to 240V RMS, 50–60Hz (automatically detected at power up).

**VA RATING:** 350 volt-amps max.

**ALTITUDE:** Maximum 2000 meters above sea level.

**EMC:** Conforms to European Union EMC Directive.

**SAFETY:** Compliance with CE and NRTL listed to UL61010-1 and UL61010-2-30. Conforms with European Union Low Voltage Directive.

**VIBRATION:** MIL-PRF-28800F Class 3 Random.

**WARM-UP:** 1 hour to rated accuracies.

**DIMENSIONS:** (With handle and bumpers): 106mm high × 255mm wide × 425mm deep (4.18 in × 10.05 in × 16.75 in). (Without handle and bumpers): 88mm high × 213mm wide × 397mm deep (3.46 in × 8.39 in × 15.63 in.)

**WEIGHT:** With bumpers and handle: 4.75 kg (10.5 lbs.).

Without bumpers and handle: 4.35 kg (9.6 lbs.).

**ENVIRONMENT:** **Operating:** 0°–50°C, 70% R.H. up to 35°C. Derate 3% R.H./°C, 35°–50°C, non-condensing. **Storage:** -25°C to 65°C.

**ACCESSORIES SUPPLIED:** Test Leads, Mating Mass Terminated Screw Connector, USB Cable, Ethernet/TSP Cable, Interlock Adapter, Power Cord, QuickStart Guide, CD User's Manual.

Model 2460 specifications

SMU INSTRUMENTS

1.888.KEITHLEY (U.S. only)

[www.keithley.com](http://www.keithley.com)

**KEITHLEY**  
A Tektronix Company

Specifications are subject to change without notice. All Keithley trademarks and trade names are the property of Keithley Instruments.  
All other trademarks and trade names are the property of their respective companies.

**KEITHLEY**

A Tektronix Company

A Greater Measure of Confidence

KEITHLEY INSTRUMENTS ■ 28775 AURORA RD. ■ CLEVELAND, OH 44139-1891 ■ 440-248-0400 ■ Fax: 440-248-6168 ■ 1-888-KEITHLEY ■ [www.keithley.com](http://www.keithley.com)

**BENELUX**

+31-40-267-5506  
[www.keithley.nl](http://www.keithley.nl)

**FRANCE**

+33-01-69-86-83-60  
[www.keithley.fr](http://www.keithley.fr)

**ITALY**

+39-049-762-3950  
[www.keithley.it](http://www.keithley.it)

**MALAYSIA**

60-4-643-9679  
[www.keithley.com](http://www.keithley.com)

**SINGAPORE**

01-800-8255-2835  
[www.keithley.com.sg](http://www.keithley.com.sg)

**BRAZIL**

55-11-4058-0229  
[www.keithley.com](http://www.keithley.com)

**GERMANY**

+49-89-84-93-07-40  
[www.keithley.de](http://www.keithley.de)

**JAPAN**

81-120-441-046  
[www.keithley.jp](http://www.keithley.jp)

**MEXICO**

52-55-5424-7907  
[www.keithley.com](http://www.keithley.com)

**TAIWAN**

886-3-572-9077  
[www.keithley.com.tw](http://www.keithley.com.tw)

**CHINA**

86-10-8447-5556  
[www.keithley.com.cn](http://www.keithley.com.cn)

**INDIA**

080-30792600  
[www.keithley.in](http://www.keithley.in)

**KOREA**

82-2-6917-5000  
[www.keithley.co.kr](http://www.keithley.co.kr)

**RUSSIA**

+7-495-664-7564  
[www.keithley.ru](http://www.keithley.ru)

**UNITED KINGDOM**

+44-1344-39-2450  
[www.keithley.co.uk](http://www.keithley.co.uk)

For further information on how to purchase or to locate a sales partner please visit [www.keithley.com/buy](http://www.keithley.com/buy)



Компания «Океан Электроники» предлагает заключение долгосрочных отношений при поставках импортных электронных компонентов на взаимовыгодных условиях!

Наши преимущества:

- Поставка оригинальных импортных электронных компонентов напрямую с производств Америки, Европы и Азии, а так же с крупнейших складов мира;
- Широкая линейка поставок активных и пассивных импортных электронных компонентов (более 30 млн. наименований);
- Поставка сложных, дефицитных, либо снятых с производства позиций;
- Оперативные сроки поставки под заказ (от 5 рабочих дней);
- Экспресс доставка в любую точку России;
- Помощь Конструкторского Отдела и консультации квалифицированных инженеров;
- Техническая поддержка проекта, помощь в подборе аналогов, поставка прототипов;
- Поставка электронных компонентов под контролем ВП;
- Система менеджмента качества сертифицирована по Международному стандарту ISO 9001;
- При необходимости вся продукция военного и аэрокосмического назначения проходит испытания и сертификацию в лаборатории (по согласованию с заказчиком);
- Поставка специализированных компонентов военного и аэрокосмического уровня качества (Xilinx, Altera, Analog Devices, Intersil, Interpoint, Microsemi, Actel, Aeroflex, Peregrine, VPT, Syfer, Eurofarad, Texas Instruments, MS Kennedy, Miteq, Cobham, E2V, MA-COM, Hittite, Mini-Circuits, General Dynamics и др.);

Компания «Океан Электроники» является официальным дистрибьютором и эксклюзивным представителем в России одного из крупнейших производителей разъемов военного и аэрокосмического назначения «JONHON», а так же официальным дистрибьютором и эксклюзивным представителем в России производителя высокотехнологичных и надежных решений для передачи СВЧ сигналов «FORSTAR».



## JONHON

«JONHON» (основан в 1970 г.)

Разъемы специального, военного и аэрокосмического назначения:

(Применяются в военной, авиационной, аэрокосмической, морской, железнодорожной, горно- и нефтедобывающей отраслях промышленности)

«FORSTAR» (основан в 1998 г.)

ВЧ соединители, коаксиальные кабели, кабельные сборки и микроволновые компоненты:

(Применяются в телекоммуникациях гражданского и специального назначения, в средствах связи, РЛС, а так же военной, авиационной и аэрокосмической отраслях промышленности).



Телефон: 8 (812) 309-75-97 (многоканальный)

Факс: 8 (812) 320-03-32

Электронная почта: [ocean@oceanchips.ru](mailto:ocean@oceanchips.ru)

Web: <http://oceanchips.ru/>

Адрес: 198099, г. Санкт-Петербург, ул. Калинина, д. 2, корп. 4, лит. А