

DESCRIPTION

Demonstration circuit 1294A shows adjustable linear regulators in parallel using LT3080. Architected as a precision current source and voltage follower, it allows this new regulator to be used in many applications requiring high current, adjustability to zero output, and no heat sink. Also the device brings out the collector of the pass transistor to allow low dropout operation when used with multiple supplies.

A key feature of the LT3080 is the capability to supply a wide output voltage range. By using a reference current through a single resistor, the output voltage can be programmed to any level between zero and 36V. The DC1294A has a reduced input voltage 25V due to input capacitor voltage rating, and is capable of delivering up to 4.4A output current by paralleling 4 LT3080s with only 20mΩ PCB ballast resistors. The DC1294A can be used as a high current linear regulator, post regulator for switching supply, vari-

able voltage supply or low output voltage power supply.

Internal protection circuitry includes current limiting and thermal limiting.

LT3080 regulator is offered in 8-lead MSOP (with an Exposed Pad for better thermal characteristics), a 3mm × 3mm DFN, 5-lead TO-220 and a simple-to-use 3-lead SOT-223 version.

The LT3080 datasheet gives a complete description of the part, operation and application information. The datasheet should be read in conjunction with this quick start guide for working on or modifying the demo circuit 1294A.

Design files for this circuit board are available. Call the LTC factory.

 , LTC and LT are registered trademarks of Linear Technology Corporation.

Table 1. Performance Summary ($T_A = 25^{\circ}\text{C}$)

PARAMETER	CONDITION	VALUE
Minimum Vin Voltage	Vout=3.3V	3.8V
Maximum Vin Voltage		25V
Minimum Vcontrol Voltage	Vout=3.3V	4.9V
Maximum Vcontrol Voltage		25V
Output Voltage		3.3V ±3%
Minimum Output Current		4mA
Maximum Output Current	Vin-Vout<2.5V	4.4A

QUICK START PROCEDURE

The DC1294A is easy to set up to evaluate the performance of the LT3080. Refer to Figure 1. for proper measurement equipment setup and following the procedures below:

1. Apply 3.8V across V_{in} (to Gnd), and 4.9V across $V_{control}$. Draw 4.4A of load current. The measured V_{out} should be $3.3V \pm 3\%$ (3.2V to 3.4V).

2. Vary V_{in} from 3.8V to 25V, $V_{control}$ from 4.9V to 25V and the load current from 4mA to 4.4A. V_{out} should measure $3.3V \pm 3\%$ (3.2V to 3.4V).

Note: Make sure the power dissipation is limited below the thermal limit.

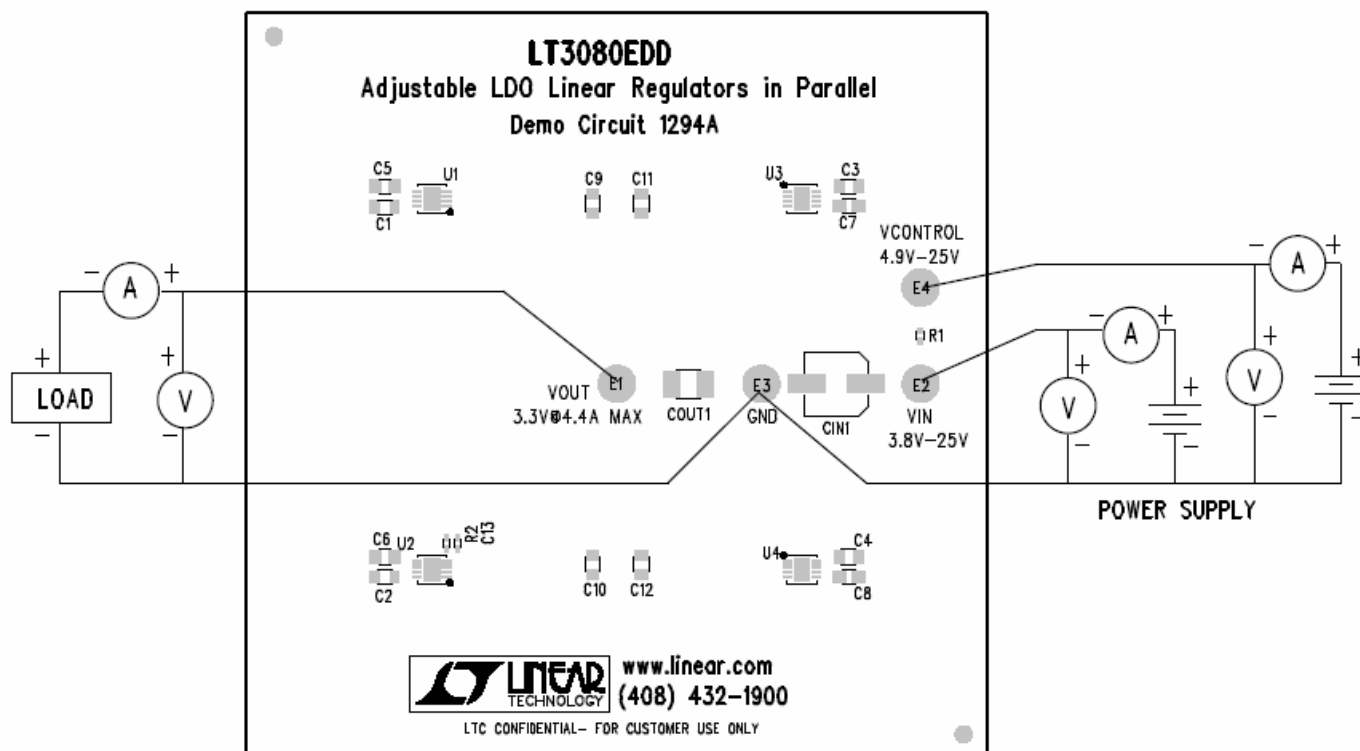


Figure 1. Proper Measurement Equipment Setup

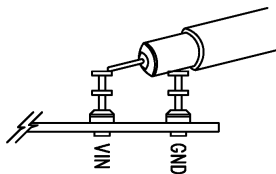


Figure 2. Measuring Input or Output Ripple

INPUT VOLTAGE RANGE

The guaranteed V_{in} dropout voltage is 0.5V at 4.4A, the guaranteed $V_{control}$ dropout voltage is 1.6V at 4.4A. The maximum V_{in} and maximum $V_{control}$ is

reduced to 25V due to the input capacitor voltage rating.

DUAL SUPPLY OR SINGLE SUPPLY

Use two separate supplies for V_{in} and $V_{control}$, a low dropout voltage can be achieved on the V_{in} pin and the power dissipation is minimized. Alternatively, Tying the $V_{control}$ to V_{in} through a zero ohm jump resistor R1

on board, a single supply is sufficient to drive the demo circuit 1294A. **AVOID USING A LONG WIRE TO TIE VCONTROL AND VIN.**

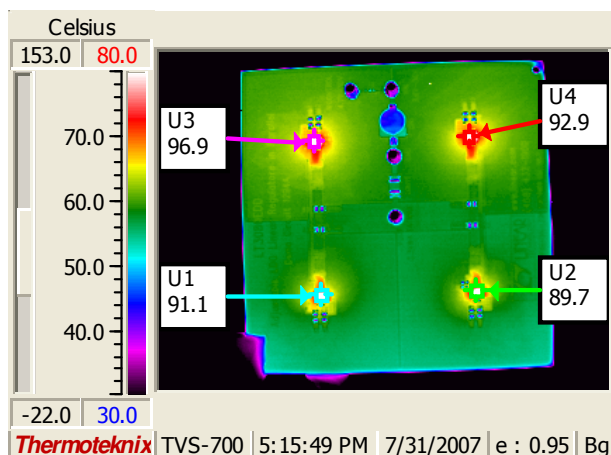
OUTPUT CURRENT

The output current will decrease at high input-to-output differential. The actual current output is further

limited by the thermal shutdown function, which is related to the board thermal dissipation.

THERMAL IMAGE

An example thermal image shows the temperature distribution on board. The test is done in still air at room temperature with average 1.7W power dissipation in each LT3080.



BYPASS CAPACITOR

Since the SET pin is a high impedance node, unwanted signals may couple into the SET pin and cause erratic behavior. This will be most noticeable when operating with minimum output capacitors at full load current. The easiest way to remedy this is to bypass the SET

pin with a small amount of capacitance from SET to ground, 10pF to 20pF is sufficient. A 0.01uF bypass capacitor is used on the demo board to provide a low-noise output. Please refer to datasheet for details.

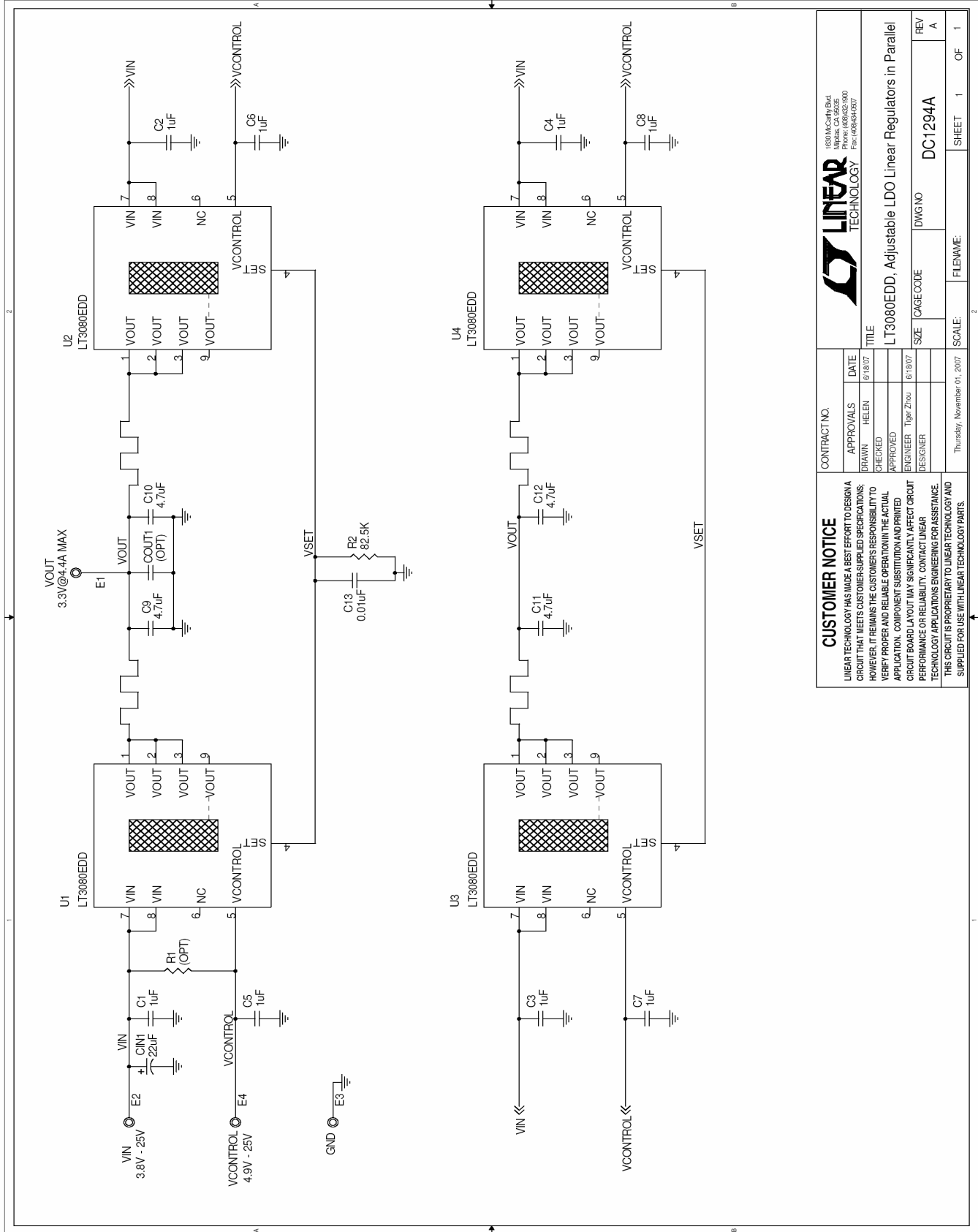
PARALLEL OPERATION

A small ballast resistor is required for parallel operation, such as 20mΩ. A short PCB trace can easily serve that purpose. Refer to the datasheet for trace length calculation. **THE BOTTOM PAD OF IC IS THE OUTPUT.** The bottom pad can be tied to the output pin

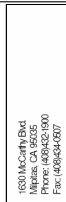
respectively, however, each bottom pad should isolated from the others, thus force the output current go through the ballast resistors.

QUICK START GUIDE FOR DEMONSTRATION CIRCUIT 1294A

ADJUSTABLE LDO LINEAR REGULATORS IN PARALLEL



CUSTOMER NOTICE		CONTRACT NO.	APPROVALS	DATE	TITLE
LINEAR TECHNOLOGY HAS MADE A BEST EFFORT TO DESIGN A CIRCUIT THAT MEETS CUSTOMER-SUPPLIED SPECIFICATIONS; HOWEVER, IT REMAINS THE CUSTOMER'S RESPONSIBILITY TO VERIFY PROPER AND RELIABLE OPERATION IN THE ACTUAL APPLICATION. COMPONENT SUBSTITUTION AND PRINTED CIRCUIT BOARD LAYOUT MAY SIGNIFICANTLY AFFECT CIRCUIT PERFORMANCE OR RELIABILITY. CONTACT LINEAR TECHNOLOGY APPLICATIONS ENGINEERING FOR ASSISTANCE. THIS CIRCUIT IS PROPRIETARY TO LINEAR TECHNOLOGY AND SUPPLIED FOR USE WITH LINEAR TECHNOLOGY PARTS.		HELEN	10/18/07		LT3080EDD, Adjustable LDO Linear Regulators in Parallel
		DRAWN	CHECKED	ENGINEER	DESIGNER
		Tiger Zhou	6/18/07		
		SCALE:	FILENAME:	SHEET 1	OF 1
		REV	DC1294A	REV	A



1830 McCarty Rd
Milpitas, CA 95035
Phone: (408)432-1000
Fax: (408)432-0077

U1, U2, U3: LT3080EDD
C1, C2, C3, C4: 1uF
C5, C6, C7, C8: 1uF
C9, C10, C11, C12: 4.7uF
R1, R2: 82.5K

Компания «Океан Электроники» предлагает заключение долгосрочных отношений при поставках импортных электронных компонентов на взаимовыгодных условиях!

Наши преимущества:

- Поставка оригинальных импортных электронных компонентов напрямую с производств Америки, Европы и Азии, а так же с крупнейших складов мира;
- Широкая линейка поставок активных и пассивных импортных электронных компонентов (более 30 млн. наименований);
- Поставка сложных, дефицитных, либо снятых с производства позиций;
- Оперативные сроки поставки под заказ (от 5 рабочих дней);
- Экспресс доставка в любую точку России;
- Помощь Конструкторского Отдела и консультации квалифицированных инженеров;
- Техническая поддержка проекта, помощь в подборе аналогов, поставка прототипов;
- Поставка электронных компонентов под контролем ВП;
- Система менеджмента качества сертифицирована по Международному стандарту ISO 9001;
- При необходимости вся продукция военного и аэрокосмического назначения проходит испытания и сертификацию в лаборатории (по согласованию с заказчиком);
- Поставка специализированных компонентов военного и аэрокосмического уровня качества (Xilinx, Altera, Analog Devices, Intersil, Interpoint, Microsemi, Actel, Aeroflex, Peregrine, VPT, Syfer, Eurofarad, Texas Instruments, MS Kennedy, Miteq, Cobham, E2V, MA-COM, Hittite, Mini-Circuits, General Dynamics и др.);

Компания «Океан Электроники» является официальным дистрибьютором и эксклюзивным представителем в России одного из крупнейших производителей разъемов военного и аэрокосмического назначения «JONHON», а так же официальным дистрибьютором и эксклюзивным представителем в России производителя высокотехнологичных и надежных решений для передачи СВЧ сигналов «FORSTAR».



JONHON

«JONHON» (основан в 1970 г.)

Разъемы специального, военного и аэрокосмического назначения:

(Применяются в военной, авиационной, аэрокосмической, морской, железнодорожной, горно- и нефтедобывающей отраслях промышленности)

«FORSTAR» (основан в 1998 г.)

ВЧ соединители, коаксиальные кабели, кабельные сборки и микроволновые компоненты:

(Применяются в телекоммуникациях гражданского и специального назначения, в средствах связи, РЛС, а так же военной, авиационной и аэрокосмической отраслях промышленности).



Телефон: 8 (812) 309-75-97 (многоканальный)

Факс: 8 (812) 320-03-32

Электронная почта: ocean@oceanchips.ru

Web: <http://oceanchips.ru/>

Адрес: 198099, г. Санкт-Петербург, ул. Калинина, д. 2, корп. 4, лит. А