

TECHNICAL DATA

RSE300 and RSE600 Infrared Cameras



Mounted infrared cameras for research, science and engineering

- **MATLAB®** and **LabVIEW®** software compatibility allows users to integrate infrared data, images and videos to support R&D analysis
- 320x240 and 640x480 resolution options
- See the details you need with **optional smart lenses**: 2x and 4x telephoto, wide angle and macro lenses
- Optimize images, generate customizable reports and export images to the format of your choice with **SmartView® desktop software**
- Eliminate potential for mis-diagnosis with automatically focused images throughout your field of view with **MultiSharp™ Focus**

SUPERIOR IMAGE QUALITY

SPATIAL RESOLUTION

RSE300
1.85 mRad

RSE600
0.93 mRad

RESOLUTION

RSE300

320x240

RSE600

640x480

FIELD OF VIEW

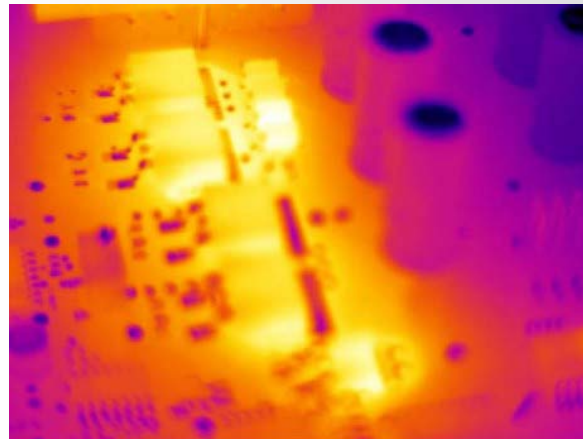
RSE300

34 °H x 25.5 °V

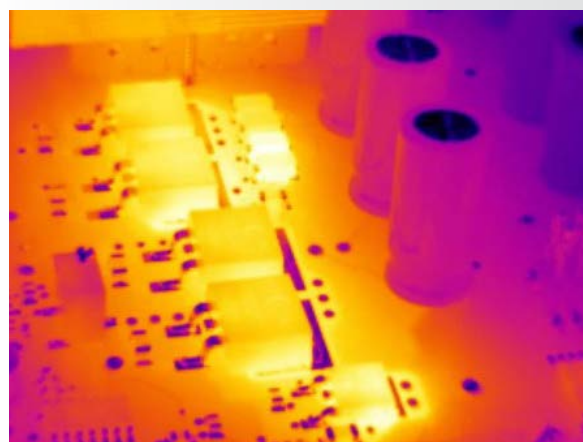
RSE600

34 °H x 25.5 °V

100 % Focused—Every object. Near and far. MultiSharp™ Focus.



Manual focus



MultiSharp Focus, available on the RSE300 and RSE600 Infrared Cameras

Detailed specifications

| | RSE300 | RSE600 |
|--|--|--|
| Key Features | | |
| Detector resolution | 320x240 (76,800 pixels) | 640x480 (307,200 pixels)** |
| IFOV with standard lens (spatial resolution) | 1.85 mRad | 0.93 mRad |
| Field of view | 34 °H x 25.5 °V | 34 °H x 25.5 °V |
| Minimum focus distance | 15 cm (approx. 6 in) | |
| Camera focus options | Focus is adjusted in SmartView® desktop software | |
| MultiSharp™ Focus | Yes, focused near and far, throughout the field of view | |
| IR-Fusion® technology | Yes, in SmartView® desktop software. Five modes of image blending (AutoBlend™ mode, Picture-in-Picture (PIP), IR/Visible alarm, Full IR, Full visible light) add the context of the visible details to your infrared image | |
| Interfaces for image/data transfer | Supported in camera data ports: GigE Vision | |
| Thermal sensitivity (NETD) | ≤ 0.030 °C at 30 °C target temp (30 mK)* | ≤ 0.040 °C at 30 °C target temp (40 mK)* |
| Filter mode (NETD improvement) | Yes | |
| Level and span | | |
| Smooth auto and manual scaling, in SmartView® desktop software | | |
| Fast auto toggle between manual and auto modes | Yes, in SmartView® desktop software | |
| Fast auto-rescale in manual mode | Yes, in SmartView® desktop software | |
| Minimum span (in manual mode) | 0.1 °C (0.18 °F), in SmartView® desktop software | |
| Minimum span (in auto mode) | <1.0 °C (<1.8 °F), in SmartView® desktop software | |
| Built-in digital camera (visible light) | 5 megapixel industrial performance | |
| Frame rate | 60 Hz or 9 Hz versions | |
| Digital zoom | Variable up to 16x in SmartView® desktop software | |
| Data storage and image capture | | |
| Memory options | Connect to SmartView® desktop software for storage to device | |
| Image capture, review, save mechanism | Capture, save and analyze images in SmartView® desktop software | |
| Image file formats | Non-radiometric (.bmp) or (.jpeg) or fully-radiometric (.is2); no analysis software required for non-radiometric (.bmp, .jpg and .avi) files | |
| Software | SmartView® desktop software—full analysis and reporting software Compatible with MATLAB® and LabVIEW® software | |
| Export file formats with SmartView® desktop software | Bitmap (.bmp), GIF, JPEG, PNG, TIFF | |
| Voice annotation | Yes, in SmartView® desktop software | |
| IR PhotoNotes™ | Yes, in SmartView® desktop software | |
| Text annotation | Yes, in SmartView® desktop software | |
| Video recording | Radiometric, in SmartView® desktop software, with exports to standard non-radiometric formats | |
| File formats video | Non-radiometric (MPEG-encoded .AVI) and fully-radiometric (.IS3), in SmartView® software | |
| Remote display viewing | Yes, see the live stream of the camera display on your PC, or TV monitor, via Ethernet cable to SmartView® desktop software | |
| Remote control operation | Yes, through SmartView® desktop software | |
| Temperature measurement | | |
| Temperature measurement range (not calibrated below -10 °C) | -10 °C to +1200 °C (14 °F to +2192 °F) | |
| Accuracy | ± 2 °C or ± 2 %, whichever is greater | |
| Autocapture | Yes, in SmartView® desktop software | |
| Reflected background temperature compensation | Yes, in SmartView® desktop software | |
| Transmission correction | Yes, in SmartView® desktop software | |
| Available through IR-Fusion® technology in desktop software | | |
| Color palettes | 8: Ironbow, Blue-Red, High Contrast, Amber, Amber Inverted, Hot Metal, Grayscale, Grayscale Inverted | |
| Ultra Contrast™ palettes | 8: Ironbow Ultra, Blue-Red Ultra, High Contrast Ultra, Amber Ultra, Amber Inverted Ultra, Hot Metal Ultra, Grayscale Ultra, Grayscale Inverted Ultra | |

*Best possible

**Option to output 320x240 infrared data through GigE Vision

Detailed specifications (continued)

| | RSE300 | RSE600 |
|--------------------------------------|---|--------|
| Key Features | | |
| Color alarms (temperature alarms) | Yes, in SmartView® desktop software—high temperature, low temperature, and isotherms (within range) | |
| Infrared spectral band | 8 µm to 14 µm (long wave) | |
| Operating temperature | -10 °C to +50 °C (14 °F to 122 °F) | |
| Storage temperature | -20 °C to +50 °C (-4 °F to 122 °F) | |
| Relative humidity | 10 % to 95 % non-condensing | |
| Center-point temperature measurement | Yes, in SmartView® desktop software | |
| Spot temperature | Yes, in SmartView® desktop software—hot and cold spot markers | |
| User-definable spot markers | Unlimited user-definable spot markers, in SmartView® desktop software | |
| Center box | Expandable—contractible measurement box with MIN-MAX-AVG temp display, in desktop software | |
| Electromagnetic compatibility | EN 61326-1:2013 IEC 61326-1:2013; (Industrial) | |
| US FCC | CFR 47, Part 15 Subpart B Class A | |
| Vibration | IEC 60068-2-26 (sinusoidal vibration): 3G, 11–200 Hz, 3 axis. | |
| Shock | IEC 60068-2-27 (mechanical shock): 50G, 6 ms, 3 axis. | |
| Size (HxWxL) | 8.3 cm x 8.3 cm x 16.5 cm (3.3 in x 3.3 in x 6.5 in) | |
| Weight | 1 kg (2.2 lbs) | |
| Enclosure rating | IEC 60529: IP67 (protected against dust, limited ingress; protection against water spray from all directions) | |
| Warranty | Two years (standard), extended warranties are available | |
| Recommended calibration cycle | Two years (assumes normal operation and normal aging) | |
| Supported languages | Czech, Dutch, English, Finnish, French, German, Hungarian, Italian, Japanese, Korean, Polish, Portuguese, Russian, Simplified Chinese, Spanish, Swedish, Traditional Chinese, and Turkish | |

Ordering information

FLK-RSE300 60Hz Thermal Imager; 320x240
FLK-RSE300 9Hz Thermal Imager; 320x240
FLK-RSE300 9Hz/CH Thermal Imager; 320x240;
 9 Hz, China
FLK-RSE300 60Hz/JP Thermal Imager; 320x240;
 60 Hz, Japan
FLK-RSE600 60Hz Thermal Imager; 640x480
FLK-RSE600 9Hz Thermal Imager; 640x480
FLK-RSE600 9Hz/CH Thermal Imager; 640x480;
 9 Hz, China
FLK-RSE600 60Hz/JP Thermal Imager; 640x480;
 60 Hz, Japan

What's included

Infrared camera with standard infrared lens; AC power supply; Ethernet cable; Antenna

Available by free download: SmartView® desktop software and user manual

Software can be downloaded at

www.fluke.com/smartviewdownload

Optional accessories

FLK 0.75X WIDE LENS Infrared Wide Angle Lens
FLK 2X LENS Infrared Telephoto Lens
 (2X magnification)
FLK 4X LENS Infrared Telephoto Lens
 (4X magnification)
FLK MACRO LENS Infrared Macro Lens
BOOK-ITP Introduction to Thermography Principles Book
FLK-RSE-MB Mounting bracket
FLK-RSE-STAND RSE Stand

Visit your local Fluke website
 or contact your local Fluke
 representative for more information.



Fluke. Keeping your world up and running.®

Fluke Corporation
 PO Box 9090, Everett, WA 98206 U.S.A.

Fluke Europe B.V.
 PO Box 1186, 5602 BD
 Eindhoven, The Netherlands

Modification of this document is not
 permitted without written permission
 from Fluke Corporation.

For more information call:

In the U.S.A. (800) 443-5853 or
 Fax (425) 446-5116
 In Europe/M-East/Africa +31 (0)40 267 5100 or
 Fax +31 (0)40 267 5222
 In Canada (800)-36-FLUKE or
 Fax (905) 890-6866
 From other countries +1 (425) 446-5500 or
 Fax +1 (425) 446-5116
 Web access: <http://www.fluke.com>

©2017, 2018 Fluke Corporation.
 Specifications subject to change without notice.
 4/2018 6009950c-en

Компания «Океан Электроники» предлагает заключение долгосрочных отношений при поставках импортных электронных компонентов на взаимовыгодных условиях!

Наши преимущества:

- Поставка оригинальных импортных электронных компонентов напрямую с производств Америки, Европы и Азии, а так же с крупнейших складов мира;
- Широкая линейка поставок активных и пассивных импортных электронных компонентов (более 30 млн. наименований);
- Поставка сложных, дефицитных, либо снятых с производства позиций;
- Оперативные сроки поставки под заказ (от 5 рабочих дней);
- Экспресс доставка в любую точку России;
- Помощь Конструкторского Отдела и консультации квалифицированных инженеров;
- Техническая поддержка проекта, помощь в подборе аналогов, поставка прототипов;
- Поставка электронных компонентов под контролем ВП;
- Система менеджмента качества сертифицирована по Международному стандарту ISO 9001;
- При необходимости вся продукция военного и аэрокосмического назначения проходит испытания и сертификацию в лаборатории (по согласованию с заказчиком);
- Поставка специализированных компонентов военного и аэрокосмического уровня качества (Xilinx, Altera, Analog Devices, Intersil, Interpoint, Microsemi, Actel, Aeroflex, Peregrine, VPT, Syfer, Eurofarad, Texas Instruments, MS Kennedy, Miteq, Cobham, E2V, MA-COM, Hittite, Mini-Circuits, General Dynamics и др.);

Компания «Океан Электроники» является официальным дистрибьютором и эксклюзивным представителем в России одного из крупнейших производителей разъемов военного и аэрокосмического назначения «JONHON», а так же официальным дистрибьютором и эксклюзивным представителем в России производителя высокотехнологичных и надежных решений для передачи СВЧ сигналов «FORSTAR».



JONHON

«JONHON» (основан в 1970 г.)

Разъемы специального, военного и аэрокосмического назначения:

(Применяются в военной, авиационной, аэрокосмической, морской, железнодорожной, горно- и нефтедобывающей отраслях промышленности)

«FORSTAR» (основан в 1998 г.)

ВЧ соединители, коаксиальные кабели,
кабельные сборки и микроволновые компоненты:

(Применяются в телекоммуникациях гражданского и специального назначения, в средствах связи, РЛС, а так же военной, авиационной и аэрокосмической отраслях промышленности).



Телефон: 8 (812) 309-75-97 (многоканальный)

Факс: 8 (812) 320-03-32

Электронная почта: ocean@oceanchips.ru

Web: <http://oceanchips.ru/>

Адрес: 198099, г. Санкт-Петербург, ул. Калинина, д. 2, корп. 4, лит. А