

30R Series



Description

The 30R Series radial leaded device is designed to provide overcurrent protection for low voltage ($\leq 30V$) applications where space is not a concern and resettable protection is preferred.



Features

- Cured, flame retardant epoxy polymer insulating material meets UL 94V-0 requirements
- Fast time-to-trip
- RoHS compliant, Lead-Free and Halogen-Free*

Applications

- USB hubs, ports and peripherals
- Computers & peripherals
- Motor protection
- General electronics
- Automotive applications

Agency Approvals

AGENCY	AGENCY FILE NUMBER
	E183209
	R50119318

Additional Information



Datasheet



Resources



Samples

Electrical Characteristics

Part Number	I_{hold} (A)	I_{trip} (A)	V_{max} (Vdc)	I_{max} (A)	P_d typ. (W)	Maximum Time To Trip		Resistance		Agency Approvals	
						Current (A)	Time (Sec.)	R_{min} (Ω)	R_{1max} (Ω)		
30R090U	0.90	1.80	30	40	0.6	4.50	5.90	0.070	0.220	X	X
30R110U	1.10	2.20	30	40	0.7	5.50	6.60	0.050	0.170	X	X
30R135U	1.35	2.70	30	40	0.8	6.75	7.30	0.040	0.130	X	X
30R160U	1.60	3.20	30	40	0.9	8.00	8.00	0.030	0.110	X	X
30R185U	1.85	3.70	30	40	1.0	9.25	8.70	0.030	0.090	X	X
30R250U	2.50	5.00	30	40	1.2	12.50	10.30	0.020	0.070	X	X
30R300U	3.00	6.00	30	40	2.0	15.00	10.80	0.020	0.080	X	X
30R400U	4.00	8.00	30	40	2.5	20.00	12.70	0.010	0.050	X	X
30R500U	5.00	10.00	30	40	3.0	25.00	14.50	0.010	0.050	X	X
30R600U	6.00	12.00	30	40	3.5	30.00	16.00	0.005	0.040	X	X
30R700U	7.00	14.00	30	40	3.8	35.00	17.50	0.005	0.030	X	X
30R800U	8.00	16.00	30	40	4.0	40.00	18.80	0.005	0.020	X	X
30R900U	9.00	18.00	30	40	4.2	40.00	20.00	0.005	0.020	X	X

I_{hold} = Hold current: maximum current device will pass without tripping in 20°C still air.

I_{trip} = Trip current: minimum current at which the device will trip in 20°C still air.

V_{max} = Maximum voltage device can withstand without damage at rated current (I_{max})

I_{max} = Maximum fault current device can withstand without damage at rated voltage (V_{max})

P_d = Power dissipated from device when in the tripped state at 20°C still air.

R_{min} = Minimum resistance of device in initial (un-soldered) state.

R_{1max} = Maximum resistance of device at 20°C measured one hour after tripping.

Caution: Operation beyond the specified rating may result in damage and possible arcing and flame.

* Effective January 1, 2010, all 30R PTC products will be manufactured Halogen Free (HF). Existing Non-Halogen Free 30R PTC products may continue to be sold, until supplies are depleted.

Temperature Rerating

Part Number	Ambient Operation Temperature								
	-40°C	-20°C	0°C	20°C	40°C	50°C	60°C	70°C	85°C
	Hold Current (A)								
30R090U	1.31	1.17	1.04	0.90	0.75	0.69	0.61	0.55	0.47
30R110U	1.60	1.43	1.27	1.10	0.91	0.85	0.75	0.67	0.57
30R135U	1.96	1.76	1.55	1.35	1.12	1.04	0.92	0.82	0.70
30R160U	2.32	2.08	1.84	1.60	1.33	1.23	1.09	0.98	0.83
30R185U	2.68	2.41	2.13	1.85	1.54	1.42	1.26	1.13	0.96
30R250U	3.63	3.25	2.88	2.50	2.08	1.93	1.70	1.53	1.30
30R300U	4.35	3.90	3.45	3.00	2.49	2.31	2.04	1.83	1.56
30R400U	5.80	5.20	4.60	4.00	3.32	3.08	2.72	2.44	2.08
30R500U	7.25	6.50	5.75	5.00	4.15	3.85	3.40	3.05	2.60
30R600U	8.70	7.80	6.90	6.00	4.98	4.62	4.08	3.66	3.12
30R700U	10.15	9.10	8.05	7.00	5.81	5.39	4.76	4.27	3.64
30R800U	11.60	10.40	9.20	8.00	6.64	6.16	5.44	4.88	4.16
30R900U	13.05	11.70	10.35	9.00	7.47	6.93	6.12	5.49	4.68

Average Time Current Curves



The average time current curves and Temperature Rerating curve performance is affected by a number of variables, and these curves provided as guidance only. Customer must verify the performance in their application.

Temperature Rerating Curve



Note:
Typical Temperature rerating curve, refer to table for derating data

Soldering Parameters - Wave Soldering

Pre-Heating Zone	Refer to the condition recommended by the flux manufacturer. Max. ramping rate should not exceed 4°C/Sec.
Soldering Zone	Max. solder temperature should not exceed 260°C Time within 5°C of actual Max. solder temperature within 3 - 5 seconds Total time from 25°C room to Max. solder temperature within 5 minutes including Pre-Heating time
Cooling Zone	Cooling by natural convection in air. Max. ramping down rate should not exceed 6°C/Sec.



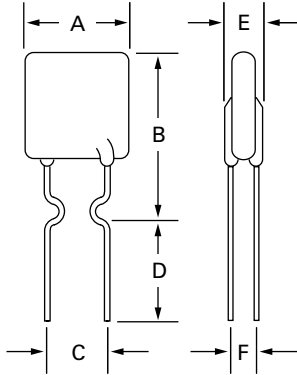
Physical Specifications

Lead Material	0.90-1.85A: Tin-plated Copper clad steel 2.50-9.00A: Tin-plated Copper
Soldering Characteristics	Solderability per MIL-STD-202, Method 208
Insulating Material	Cured, flame retardant epoxy polymer meets UL94V-0 requirements.
Device Labeling	Marked with 'LF', voltage, current rating, and date code.

Environmental Specifications

Operating/Storage Temperature	-40°C to +85°C
Maximum Device Surface Temperature in Tripped State	125°C
Passive Aging	+85°C, 1000 hours -/+5% typical resistance change
Humidity Aging	+85°C, 85% R.H., 1000 hours -/+5% typical resistance change
Thermal Shock	+85°C to -40°C 10 times -/+5% typical resistance change
Solvent Resistance	MIL-STD-202, Method 215 No change
Moisture Resistance Level	Level 1, J-STD-020

Dimensions



Part Marking System



Part Number	A		B		C		D		E		F		Physical Characteristics		
	Inches	mm	Inches	mm	Inches	mm	Inches	mm	Inches	mm	Inches	mm	Lead (dia)		Material
	Max.	Max.	Max.	Max.	Typ.	Typ.	Min.	Min.	Max.	Max.	Typ.	Typ.	Inches	mm	
30R090U	0.29	7.40	0.48	12.20	0.20	5.10	0.30	7.60	0.12	3.00	0.039	1.0	0.02	0.51	Sn/CuFe
30R110U	0.29	7.40	0.56	14.20	0.20	5.10	0.30	7.60	0.12	3.00	0.039	1.0	0.02	0.51	Sn/CuFe
30R135U	0.35	8.90	0.53	13.50	0.20	5.10	0.30	7.60	0.12	3.00	0.039	1.0	0.02	0.51	Sn/CuFe
30R160U	0.35	8.90	0.60	15.20	0.20	5.10	0.30	7.60	0.12	3.00	0.039	1.0	0.02	0.51	Sn/CuFe
30R185U	0.40	10.20	0.62	15.70	0.20	5.10	0.30	7.60	0.12	3.00	0.039	1.0	0.02	0.51	Sn/CuFe
30R250U	0.45	11.40	0.72	18.30	0.20	5.10	0.30	7.60	0.12	3.00	0.039	1.0	0.02	0.51	Sn/Cu
30R300U	0.45	11.40	0.76	19.20	0.20	5.10	0.30	7.60	0.12	3.00	0.047	1.2	0.03	0.81	Sn/Cu
30R400U	0.55	14.00	0.87	22.00	0.20	5.10	0.30	7.60	0.12	3.00	0.047	1.2	0.03	0.81	Sn/Cu
30R500U	0.55	14.00	1.01	25.60	0.40	10.20	0.30	7.60	0.12	3.00	0.047	1.2	0.03	0.81	Sn/Cu
30R600U	0.65	16.50	1.06	26.80	0.40	10.20	0.30	7.60	0.12	3.00	0.047	1.2	0.03	0.81	Sn/Cu
30R700U	0.75	19.10	1.13	28.60	0.40	10.20	0.30	7.60	0.12	3.00	0.047	1.2	0.03	0.81	Sn/Cu
30R800U	0.85	21.60	1.22	31.10	0.40	10.20	0.30	7.60	0.12	3.00	0.047	1.2	0.03	0.81	Sn/Cu
30R900U	0.95	24.10	1.24	31.60	0.40	10.20	0.30	7.60	0.12	3.00	0.047	1.2	0.03	0.81	Sn/Cu

Part Ordering Number System



Packaging

Part Number	Ordering Number	I_{hold} (A)	I_{hold} Code	Packaging Option	Quantity	Quantity & Packaging Codes
30R090U	30R090UU	0.90	090	Bulk	500	U
	30R090UPR			Tape and Ammo	2000	PR
30R110U	30R110UU	1.10	110	Bulk	500	U
	30R110UPR			Tape and Ammo	2000	PR
30R135U	30R135UU	1.35	135	Bulk	500	U
	30R135UPR			Tape and Ammo	2000	PR
30R160U	30R160UU	1.60	160	Bulk	500	U
	30R160UPR			Tape and Ammo	2000	PR
30R185U	30R185UU	1.85	185	Bulk	500	U
	30R185UPR			Tape and Ammo	2000	PR
30R250U	30R250UU	2.50	250	Bulk	500	U
	30R250UPR			Tape and Ammo	2000	PR
30R300U	30R300UU	3.00	300	Bulk	500	U
	30R300UPR			Tape and Ammo	2000	PR
30R400U	30R400UF	4.00	400	Bulk	200	F
	30R400UMR			Tape and Ammo	1000	MR
30R500U	30R500UF	5.00	500	Bulk	200	F
	30R500UMR			Tape and Ammo	1000	MR
30R600U	30R600UF	6.00	600	Bulk	200	F
	30R600UMR			Tape and Ammo	1000	MR
30R700U	30R700UF	7.00	700	Bulk	200	F
	30R700UMR			Tape and Ammo	1000	MR
30R800U	30R800UH	8.00	800	Bulk	100	H
30R900U	30R900UH	9.00	900	Bulk	100	H

Tape and Ammo Specifications

Devices taped using EIA468-B/IE286-2 standards. See table below and Figure 1 for details.

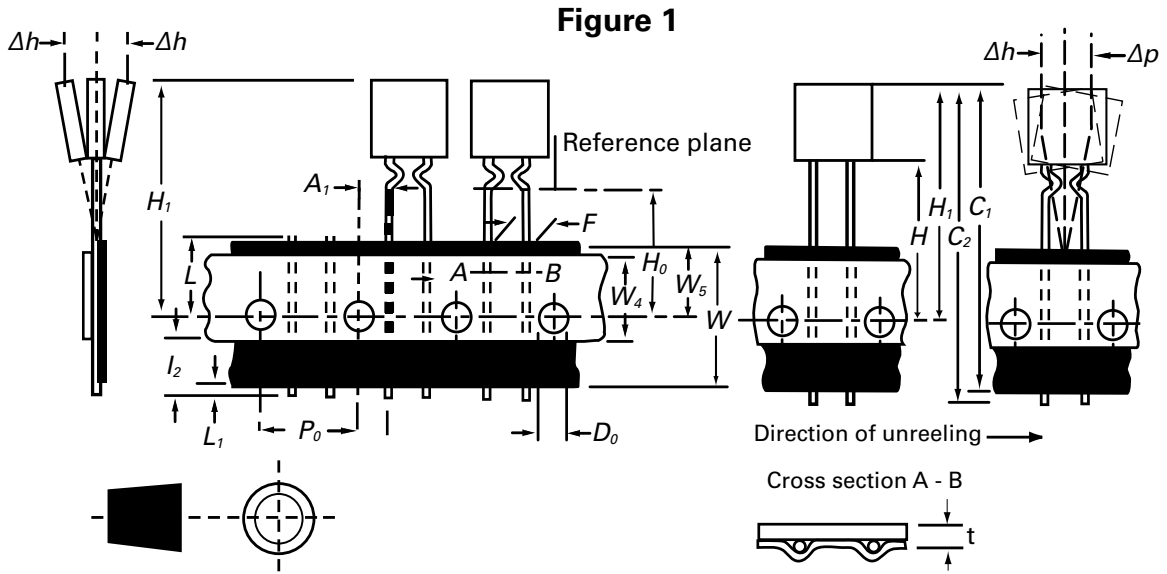
Dimension	EIA Mark	IEC Mark	Dimensions	
			Dim. (mm)	Tol. (mm)
Carrier tape width	W	W	18	-0.5 / +1.0
Hold down tape width:	W₄	W₀	11	min.
Top distance between tape edges	W₆	W₂	3	max.
Sprocket hole position	W₅	W₁	9	-0.5 / +0.75
Sprocket hole diameter*	D₀	D₀	4	-0.32 / +0.2
Abscissa to plane(straight lead)	H	H	18.5	-/+ 3.0
Abscissa to plane(kinked lead)	H₀	H₀	16	-/+ 0.5
Abscissa to top: 30R090-30R185	H₁	H₁	32.2	max.
Abscissa to top: 30R250-30R900			45.0	max.
Overall width w/o lead protrusion: 30R090-30R185	C₁		42.5	max.
Overall width w/o lead protrusion: 30R250-30R900			56	max.
Overall width w/ lead protrusion: 30R090-30R185	C₂		43.2	max.
Overall width w/ lead protrusion: 30R250-30R900			57	max.
Lead protrusion	L₁	L₁	1.0	max.
Protrusion of cut out	L	L	11	max.
Protrusion beyond hold-down tape	L₂	L₂	Not specified	
Sprocket hole pitch: 30R090-30R300	P₀	P₀	12.7	-/+ 0.3
Sprocket hole pitch on: 30R400-30R900	P₀	P₀	25.4	-/+ 0.5
Device pitch: 30R090-30R300			12.7	
Device pitch: 30R400-30R900			25.4	
Pitch tolerance			20 consecutive.	-/+ 1
Tape thickness	t	t	0.9	max.
Tape thickness with splice: 30R090-30R250	t₁		1.5	max.
Tape thickness with splice: 30R300-30R900	t₁		2.0	max.
Splice sprocket hole alignment			0	-/+ 0.3
Body lateral deviation	Δh	Δh	0	-/+ 1.0
Body tape plane deviation	Δp	Δp	0	-/+ 1.3
Ordinate to adjacent component lead*	P₁	P₁	3.81	-/+ 0.7
Ordinate to adjacent component lead*			7.62	-/+ 0.7
Lead spacing: 30R090-30R400	F	F	5.08	-/+ 0.8
Lead spacing: 30R500-30R900	F	F	10.18	-/+ 0.8

*Differs from EIA Specification

WARNING

- Users shall independently assess the suitability of these devices for each of their applications
- Operation of these devices beyond the stated maximum ratings could result in damage to the devices and lead to electrical arcing and/or fire
- These devices are intended to protect against the effects of temporary over-current or over-temperature conditions and are not intended to perform as protective devices where such conditions are expected to be repetitive or prolonged in duration
- Exposure to silicon-based oils, solvents, electrolytes, acids, and similar materials can adversely affect the performance of these PPTC devices
- These devices undergo thermal expansion under fault conditions, and thus shall be provided with adequate space and be protected against mechanical stresses
- Circuits with inductance may generate a voltage ($L di/dt$) above the rated voltage of the PPTC device.

Tape and Ammo Diagram



Компания «Океан Электроники» предлагает заключение долгосрочных отношений при поставках импортных электронных компонентов на взаимовыгодных условиях!

Наши преимущества:

- Поставка оригинальных импортных электронных компонентов напрямую с производств Америки, Европы и Азии, а так же с крупнейших складов мира;
- Широкая линейка поставок активных и пассивных импортных электронных компонентов (более 30 млн. наименований);
- Поставка сложных, дефицитных, либо снятых с производства позиций;
- Оперативные сроки поставки под заказ (от 5 рабочих дней);
- Экспресс доставка в любую точку России;
- Помощь Конструкторского Отдела и консультации квалифицированных инженеров;
- Техническая поддержка проекта, помощь в подборе аналогов, поставка прототипов;
- Поставка электронных компонентов под контролем ВП;
- Система менеджмента качества сертифицирована по Международному стандарту ISO 9001;
- При необходимости вся продукция военного и аэрокосмического назначения проходит испытания и сертификацию в лаборатории (по согласованию с заказчиком);
- Поставка специализированных компонентов военного и аэрокосмического уровня качества (Xilinx, Altera, Analog Devices, Intersil, Interpoint, Microsemi, Actel, Aeroflex, Peregrine, VPT, Syfer, Eurofarad, Texas Instruments, MS Kennedy, Miteq, Cobham, E2V, MA-COM, Hittite, Mini-Circuits, General Dynamics и др.);

Компания «Океан Электроники» является официальным дистрибьютором и эксклюзивным представителем в России одного из крупнейших производителей разъемов военного и аэрокосмического назначения «JONHON», а так же официальным дистрибьютором и эксклюзивным представителем в России производителя высокотехнологичных и надежных решений для передачи СВЧ сигналов «FORSTAR».



JONHON

«JONHON» (основан в 1970 г.)

Разъемы специального, военного и аэрокосмического назначения:

(Применяются в военной, авиационной, аэрокосмической, морской, железнодорожной, горно- и нефтедобывающей отраслях промышленности)

«FORSTAR» (основан в 1998 г.)

ВЧ соединители, коаксиальные кабели, кабельные сборки и микроволновые компоненты:

(Применяются в телекоммуникациях гражданского и специального назначения, в средствах связи, РЛС, а так же военной, авиационной и аэрокосмической отраслях промышленности).



Телефон: 8 (812) 309-75-97 (многоканальный)

Факс: 8 (812) 320-03-32

Электронная почта: ocean@oceanchips.ru

Web: <http://oceanchips.ru/>

Адрес: 198099, г. Санкт-Петербург, ул. Калинина, д. 2, корп. 4, лит. А