



InGaP HBT 1.6 WATT POWER AMPLIFIER, 0.4 - 2.2 GHz

Typical Applications

The HMC453QS16G / HMC453QS16GE is ideal for applications requiring a high dynamic range amplifier:

- GSM, GPRS & EDGE
- CDMA & W-CDMA
- CATV/Cable Modem
- Fixed Wireless & WLL

Features

- Output IP3: +51 dBm
- 21.5 dB Gain @ 400 MHz
- 8 dB Gain @ 2100 MHz
- 45% PAE @ +32 dBm Pout
- +25 dBm CDMA2000 Channel Power@ -45 dBc ACP
- Single +5V Supply
- Integrated Power Control (VPD)
- QSOP16G SMT Package: 29.4 mm²

Functional Diagram



General Description

The HMC453QS16G & HMC453QS16GE are high dynamic range GaAs InGaP Heterojunction Bipolar Transistor (HBT) 1.6 watt MMIC power amplifiers operating between 0.4 and 2.2 GHz. Packaged in a miniature 16 lead QSOP plastic package, the amplifier gain is typically 21.5 dB at 0.4 GHz and 8 dB at 2.1 GHz. Utilizing a minimum number of external components and a single +5V supply, the amplifier output IP3 can be optimized to +47 dBm at 0.4 GHz or +51 dBm at 2.1 GHz. The power control (VPD) can be used for full power down or RF output power/current control. The high output IP3 and PAE make the HMC453QS16G(E) ideal power amplifiers for Cellular/PCS/3G, WLL, ISM and Fixed Wireless applications.

Electrical Specifications, $T_A = +25^\circ\text{C}$, $V_s = +5\text{V}$, $VPD = +5\text{V}$ [1]

| Parameter | Min. | Typ. | Max. | Min. | Typ. | Max. | Min. | Typ. | Max. | Min. | Typ. | Max. | Min. | Typ. | Max. | Units |
|---|-----------|-------|------|-----------|-------|------|-----------|-------|------|-------------|-------|------|-------------|-------|------|---------|
| Frequency Range | 400 - 410 | | | 450 - 496 | | | 810 - 960 | | | 1710 - 1990 | | | 2010 - 2170 | | | MHz |
| Gain | 19 | 21.5 | | 18 | 20.5 | | 12 | 15 | | 6 | 9 | | 6 | 8 | | dB |
| Gain Variation Over Temperature | | 0.012 | 0.02 | | 0.012 | 0.02 | | 0.012 | 0.02 | | 0.012 | 0.02 | | 0.012 | 0.02 | dB / °C |
| Input Return Loss | | 12 | | | 15 | | | 12 | | | 10 | | | 15 | | dB |
| Output Return Loss | | 10 | | | 10 | | | 15 | | | 13 | | | 18 | | dB |
| Output Power for 1dB Compression (P1dB) | 29 | 32 | | 29 | 32 | | 29 | 32 | | 28.5 | 31.5 | | 30 | 33 | | dBm |
| Saturated Output Power (Psat) | | 32.25 | | | 32.25 | | | 32.5 | | | 32 | | | 33.5 | | dBm |
| Output Third Order Intercept (IP3) [2] | 44 | 47 | | 47 | 50 | | 46 | 49 | | 44 | 50 | | 48 | 51 | | dBm |
| Noise Figure | | 7 | | | 8.5 | | | 7 | | | 7.5 | | | 6.5 | | dB |
| Supply Current (Icq) | | 725 | | | 725 | | | 725 | | | 725 | | | 725 | | mA |
| Control Current (IPD) | | 12 | | | 12 | | | 12 | | | 12 | | | 12 | | mA |

[1] Specifications and data reflect HMC453QS16G measured using the respective application circuits for each designated frequency band found herein. Contact the HMC Applications Group for assistance in optimizing performance for your application.

[2] Two-tone input power of -10 dBm per tone, 1 MHz spacing.



Broadband Gain & Return Loss @ 400 MHz



Gain vs. Temperature @ 400 MHz



Input Return Loss vs. Temperature @ 400 MHz



Output Return Loss vs. Temperature @ 400 MHz



P1dB vs. Temperature @ 400 MHz



Psat vs. Temperature @ 400 MHz



11

LINEAR & POWER AMPLIFIERS - SMT



v01.0205



HMC453QS16G / 453QS16GE

InGaP HBT 1.6 WATT POWER AMPLIFIER, 0.4 - 2.2 GHz

Output IP3 vs. Temperature @ 400 MHz



Noise Figure vs. Temperature @ 400 MHz



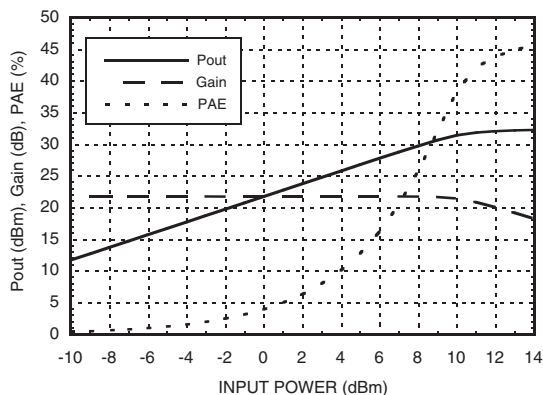
Reverse Isolation vs. Temperature @ 400 MHz



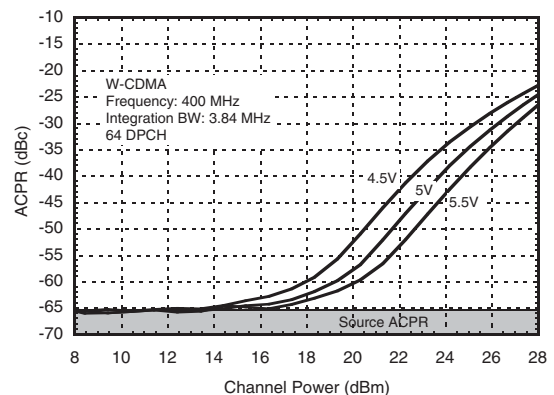
Gain, Power & IP3 vs. Supply Voltage @ 400 MHz



Power Compression @ 400 MHz



ACPR vs. Supply Voltage @ 400 MHz W-CDMA, 64 DPCH



11

LINEAR & POWER AMPLIFIERS - SMT



MICROWAVE CORPORATION v01.0205



HMC453QS16G / 453QS16GE

InGaP HBT 1.6 WATT POWER AMPLIFIER, 0.4 - 2.2 GHz

Broadband Gain & Return Loss @ 470 MHz



Gain vs. Temperature @ 470 MHz



Input Return Loss vs. Temperature @ 40 MHz



Output Return Loss vs. Temperature @ 470 MHz



P1dB vs. Temperature @ 470 MHz



Psat vs. Temperature @ 470 MHz



11

LINEAR & POWER AMPLIFIERS - SMT



MICROWAVE CORPORATION v01.0205



HMC453QS16G / 453QS16GE

InGaP HBT 1.6 WATT POWER AMPLIFIER, 0.4 - 2.2 GHz

Output IP3 vs. Temperature @ 470 MHz



Noise Figure vs. Temperature @ 470 MHz



Reverse Isolation vs. Temperature @ 470 MHz



Gain, Power & IP3 vs. Supply Voltage @ 470 MHz



Power Compression @ 470 MHz



ACPR vs. Supply Voltage @ 470 MHz W-CDMA, 64 DPCH



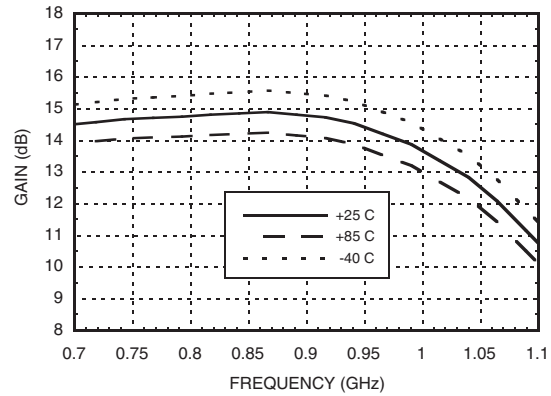
For price, delivery, and to place orders, please contact Hittite Microwave Corporation:
20 Alpha Road, Chelmsford, MA 01824 Phone: 978-250-3343 Fax: 978-250-3373
Order On-line at www.hittite.com



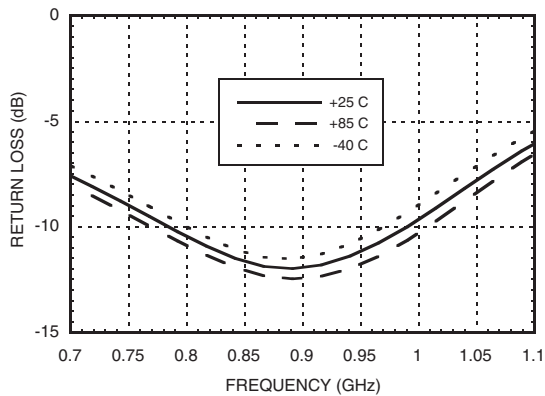
Broadband Gain & Return Loss @ 900 MHz



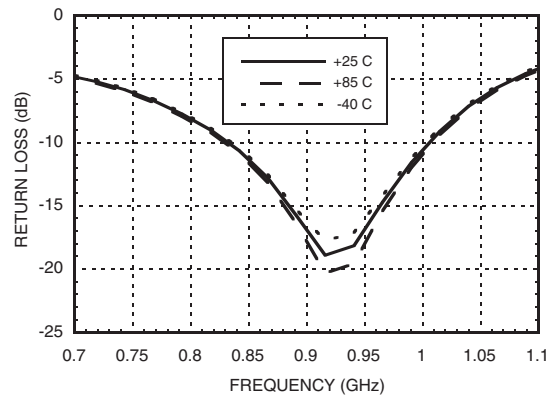
Gain vs. Temperature @ 900 MHz



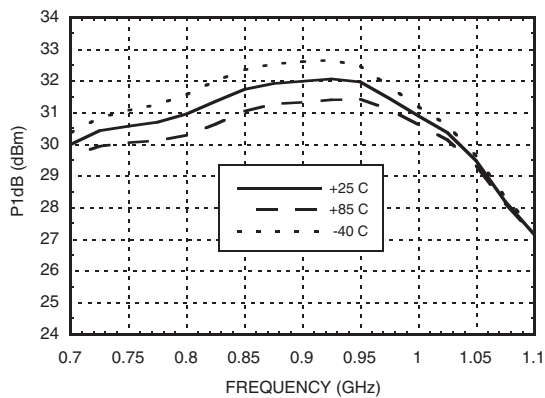
Input Return Loss vs. Temperature @ 900 MHz



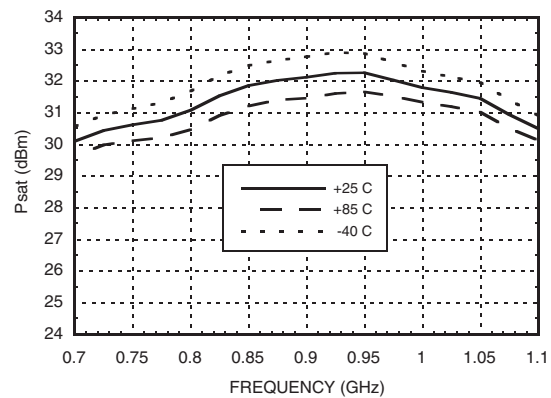
Output Return Loss vs. Temperature @ 900 MHz



P1dB vs. Temperature @ 900 MHz



Psat vs. Temperature @ 900 MHz



11

LINEAR & POWER AMPLIFIERS - SMT



HMC453QS16G / 453QS16GE

InGaP HBT 1.6 WATT POWER AMPLIFIER, 0.4 - 2.2 GHz

Output IP3 vs. Temperature @ 900 MHz



Noise Figure vs. Temperature @ 900 MHz



Reverse Isolation vs. Temperature @ 900 MHz



Gain, Power & IP3 vs. Supply Voltage @ 900 MHz



Gain, Power & IP3 vs. Supply Current @ 900 MHz*



ACPR vs. Supply Voltage @ 910 MHz CDMA IS95, 9 Channels Forward



* Icq is controlled by varying VPD.



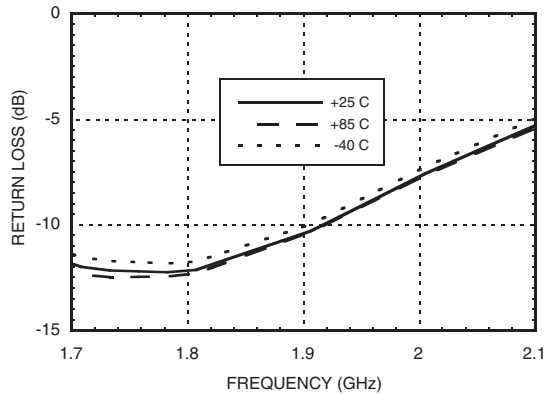
Broadband Gain & Return Loss @ 1900 MHz



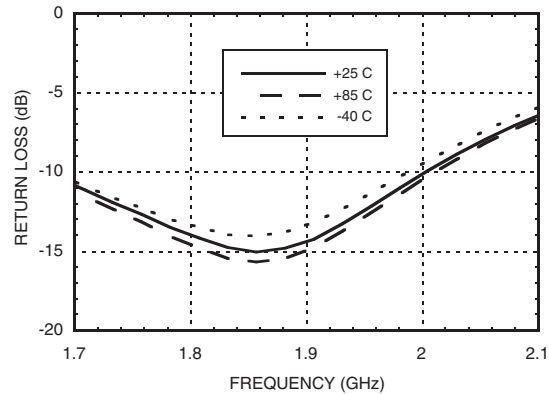
Gain vs. Temperature @ 1900 MHz



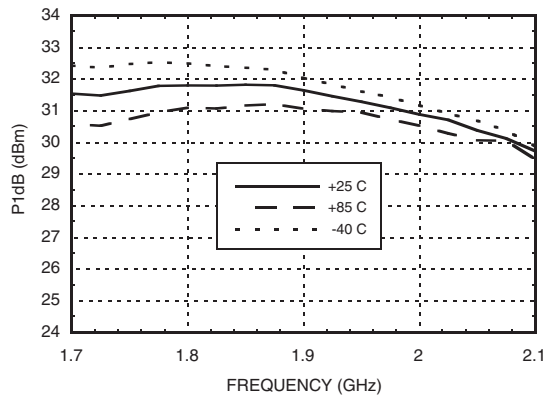
Input Return Loss vs. Temperature @ 1900 MHz



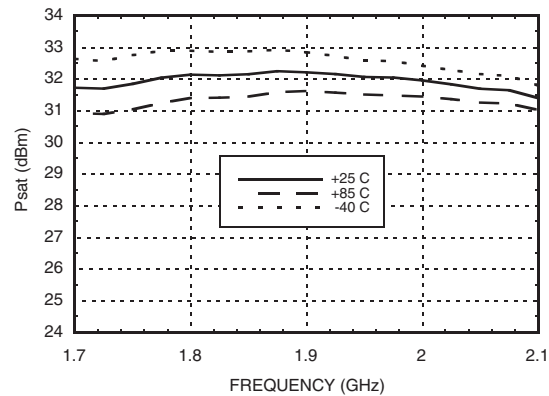
Output Return Loss vs. Temperature @ 1900 MHz



P1dB vs. Temperature @ 1900 MHz



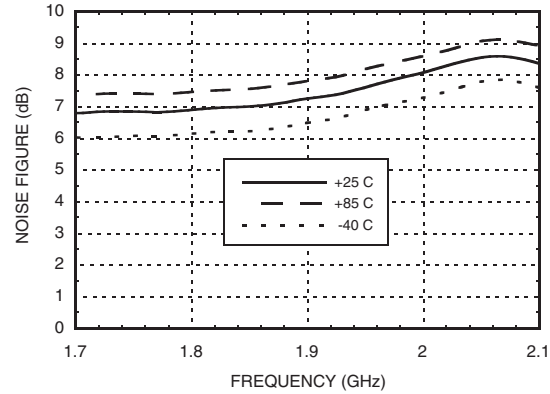
Psat vs. Temperature @ 1900 MHz



Output IP3 vs. Temperature @ 1900 MHz



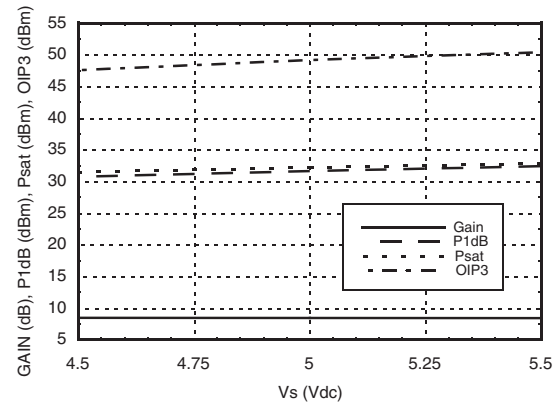
Noise Figure vs. Temperature @ 1900 MHz



Reverse Isolation vs. Temperature @ 1900 MHz



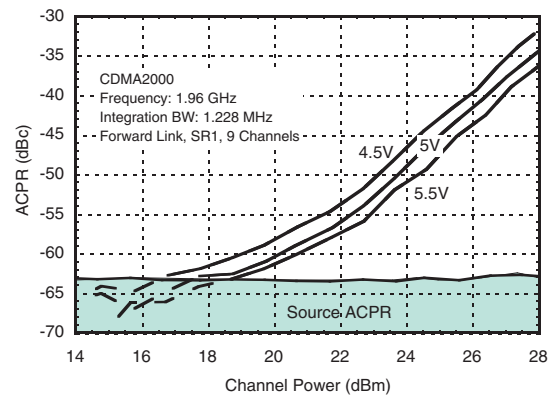
Gain, Power & IP3 vs. Supply Voltage @ 1900 MHz



Gain, Power & IP3 vs. Supply Current @ 1900 MHz*



ACPR vs. Supply Voltage @ 1960 MHz CDMA 2000, 9 Channels Forward



* Icq is controlled by varying VPD.



Broadband Gain & Return Loss @ 2100 MHz



Gain vs. Temperature @ 2100 MHz



Input Return Loss vs. Temperature @ 2100 MHz



Output Return Loss vs. Temperature @ 2100 MHz



P1dB vs. Temperature @ 2100 MHz



Psat vs. Temperature @ 2100 MHz



11

LINEAR & POWER AMPLIFIERS - SMT

Output IP3 vs. Temperature @ 2100 MHz



Noise Figure vs. Temperature @ 2100 MHz



Reverse Isolation vs. Temperature @ 2100 MHz



Gain, Power & IP3 vs. Supply Voltage @ 2100 MHz



Power Compression @ 2100 MHz



ACPR vs. Supply Voltage @ 2140 MHz W-CDMA, 64 DPCH



Power Dissipation



Absolute Maximum Ratings

| | |
|---|----------------|
| Collector Bias Voltage (Vcc) | +6.0 Vdc |
| Control Voltage (Vpd) | +5.4 Vdc |
| RF Input Power (RFIN)(Vs = Vpd = +5Vdc) | +32 dBm |
| Junction Temperature | 150 °C |
| Continuous Pdiss (T = 85 °C) (derate 58.5 mW/°C above 85 °C) | 3.8 W |
| Thermal Resistance (junction to ground paddle) | 17.1 °C/W |
| Storage Temperature | -65 to +150 °C |
| Operating Temperature | -40 to +85 °C |



ELECTROSTATIC SENSITIVE DEVICE
OBSERVE HANDLING PRECAUTIONS

Outline Drawing



Package Information

| Part Number | Package Body Material | Lead Finish | MSL Rating | Package Marking ^[3] |
|--------------|--|---------------|---------------------|--------------------------------|
| HMC453QS16G | Low Stress Injection Molded Plastic | Sn/Pb Solder | MSL1 ^[1] | H453 XXXX |
| HMC453QS16GE | RoHS-compliant Low Stress Injection Molded Plastic | 100% matte Sn | MSL1 ^[2] | H453 XXXX |

[1] Max peak reflow temperature of 235 °C

[2] Max peak reflow temperature of 260 °C

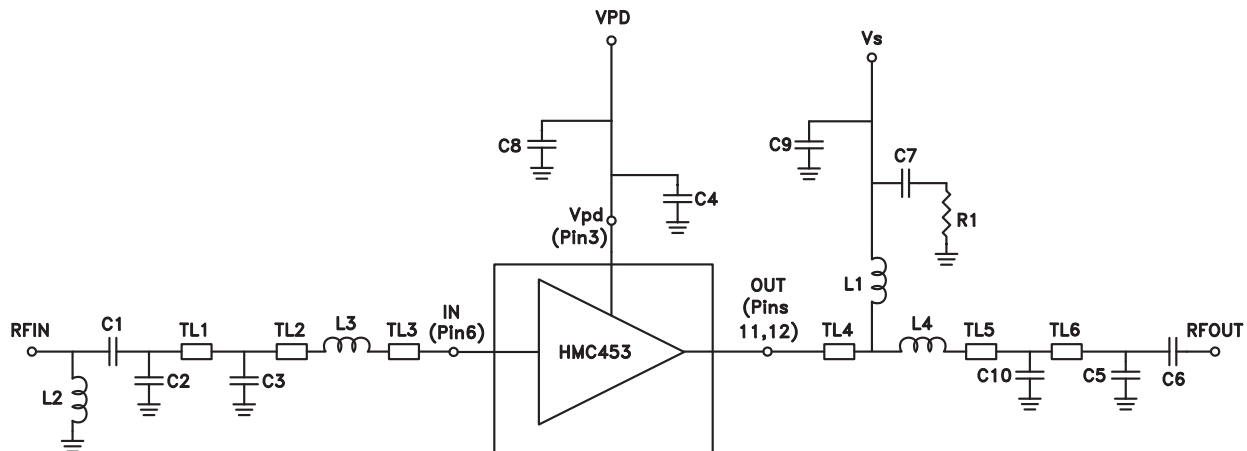
[3] 4-Digit lot number XXXX

Pin Descriptions

| Pin Number | Function | Description | Interface Schematic |
|-------------------------|----------|---|---|
| 1, 2, 4, 5, 7-10, 13-16 | GND | These pins & package bottom must be connected to RF/DC ground. |  |
| 3 | VPD | Power control pin. For maximum power, this pin should be connected to 5V. A higher voltage is not recommended. For lower idle current, this voltage can be reduced. |  |
| 6 | RFIN | This pin is DC coupled. Off chip matching components are required. See Application Circuit herein. |  |
| 11, 12 | RFOUT | RF output and DC Bias input for the output amplifier stage. Off chip matching components are required. See Application Circuit herein. | |

400 MHz Application Circuit

This circuit was used to specify the performance for 400-410 MHz operation. Contact the HMC Applications Group for assistance in optimizing performance for your application.



| Recommended Component Values | |
|------------------------------|---------|
| C1, C5 | 12 pF |
| C2, C10 | 8.2 pF |
| C3 | 6.8 pF |
| C4, C7 | 100 pF |
| C6 | 39 pF |
| C8, C9 | 2.2 μF |
| L1 | 47 nH |
| L2 | 40 nH |
| L3, L4 | 4.3 nH |
| R1 | 5.1 Ohm |

| | TL1 | TL2 | TL3 | TL4 | TL5 | TL6 |
|---|--------|--------|--------|--------|--------|--------|
| Impedance | 50 Ohm | 50 Ohm | 50 Ohm | 50 Ohm | 50 Ohm | 50 Ohm |
| Physical Length | 0.22" | 0.04" | 0.04" | 0.16" | 0.04" | 0.05" |
| Electrical Length | 5° | 1° | 1° | 4° | 1° | 1° |
| PCB Material: 10 mil Rogers 4350, Er = 3.48 | | | | | | |

For price, delivery, and to place orders, please contact Hittite Microwave Corporation:
 20 Alpha Road, Chelmsford, MA 01824 Phone: 978-250-3343 Fax: 978-250-3373
 Order On-line at www.hittite.com

400 MHz Evaluation PCB



List of Materials for Evaluation PCB 110865-400 ^[1]

| Item | Description |
|---------|--|
| J1 - J2 | PCB Mount SMA Connector |
| J3 | 2 mm DC Header |
| C1, C5 | 12 pF Capacitor, 0402 Pkg. |
| C2, C10 | 8.2 pF Capacitor, 0402 Pkg. |
| C3 | 6.8 pF Capacitor, 0402 Pkg. |
| C4, C7 | 100 pF Capacitor, 0402 Pkg. |
| C6 | 39 pF Capacitor, 0402 Pkg. |
| C8, C9 | 2.2 μ F Capacitor, Tantalum |
| L1 | 47 nH Inductor, 0603 Pkg. |
| L2 | 40 nH Inductor, 0402 Pkg. |
| L3, L4 | 4.3 nH Inductor, 0402 Pkg. |
| R1 | 5.1 Ohm Resistor, 0402 Pkg. |
| U1 | HMC453QS16G / HMC453QS16GE Linear Amp |
| PCB [2] | 110863 Evaluation PCB, 10 mils |

[1] Reference this number when ordering complete evaluation PCB

[2] Circuit Board Material: Rogers 4350, Er = 3.48

The circuit board used in this application should use RF circuit design techniques. Signal lines should have 50 ohm impedance while the package ground leads and exposed paddle should be connected directly to the ground plane similar to that shown. A sufficient number of VIA holes should be used to connect the top and bottom ground planes. The evaluation board should be mounted to an appropriate heat sink. The evaluation circuit board shown is available from Hittite upon request.



470 MHz Application Circuit

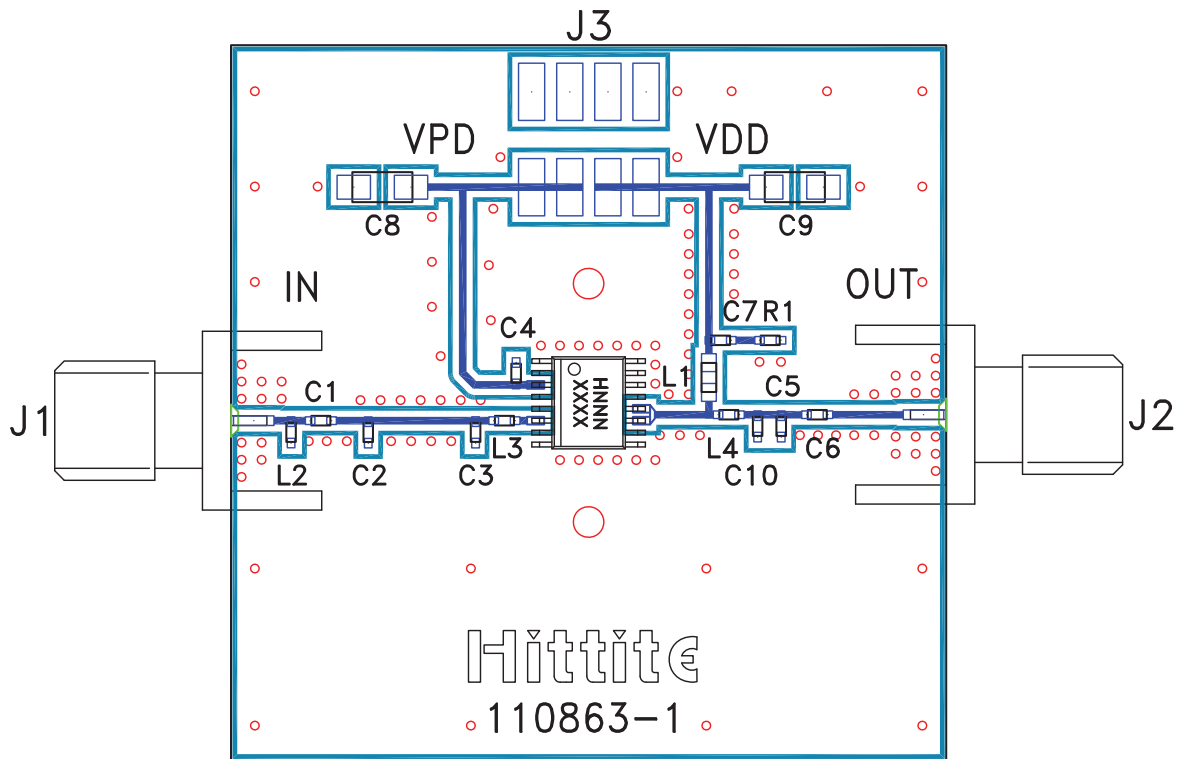
This circuit was used to specify the performance for 450-496 MHz operation. Contact the HMC Applications Group for assistance in optimizing performance for your application.



| Recommended Component Values | |
|------------------------------|---------|
| C1 | 12 pF |
| C2 | 8.2 pF |
| C3 | 6.8 pF |
| C4, C7 | 100 pF |
| C5 | 10 pF |
| C6 | 39 pF |
| C8, C9 | 2.2 μF |
| C10 | 5.6 pF |
| L1 | 47 nH |
| L2 | 40 nH |
| L3, L4 | 4.3 nH |
| R1 | 5.1 Ohm |

| | TL1 | TL2 | TL3 | TL4 | TL5 | TL6 |
|---|--------|--------|--------|--------|--------|--------|
| Impedance | 50 Ohm | 50 Ohm | 50 Ohm | 50 Ohm | 50 Ohm | 50 Ohm |
| Physical Length | 0.22" | 0.04" | 0.04" | 0.16" | 0.04" | 0.05" |
| Electrical Length | 6° | 1° | 1° | 4° | 1° | 1° |
| PCB Material: 10 mil Rogers 4350, Er = 3.48 | | | | | | |

470 MHz Evaluation PCB



List of Materials for Evaluation PCB 110976-470 [1]

| Item | Description |
|---------|---------------------------------------|
| J1 - J2 | PCB Mount SMA Connector |
| J3 | 2 mm DC Header |
| C1 | 12 pF Capacitor, 0402 Pkg. |
| C2 | 8.2 pF Capacitor, 0402 Pkg. |
| C3 | 6.8 pF Capacitor, 0402 Pkg. |
| C4, C7 | 100 pF Capacitor, 0402 Pkg. |
| C5 | 10 pF Capacitor, 0402 Pkg. |
| C6 | 39 pF Capacitor, 0402 Pkg. |
| C8, C9 | 2.2 μ F Capacitor, Tantalum |
| C10 | 5.6 pF Capacitor, 0402 Pkg. |
| L1 | 47 nH Inductor, 0603 Pkg. |
| L2 | 40 nH Inductor, 0402 Pkg. |
| L3, L4 | 4.3 nH Inductor, 0402 Pkg. |
| R1 | 5.1 Ohm Resistor, 0402 Pkg. |
| U1 | HMC453QS16G / HMC453QS16GE Linear Amp |
| PCB [2] | 110863 Evaluation PCB, 10 mils |

[1] Reference this number when ordering complete evaluation PCB

[2] Circuit Board Material: Rogers 4350, Er = 3.48

The circuit board used in this application should use RF circuit design techniques. Signal lines should have 50 ohm impedance while the package ground leads and exposed paddle should be connected directly to the ground plane similar to that shown. A sufficient number of via holes should be used to connect the top and bottom ground planes. The evaluation board should be mounted to an appropriate heat sink. The evaluation circuit board shown is available from Hittite upon request.

900 MHz Application Circuit

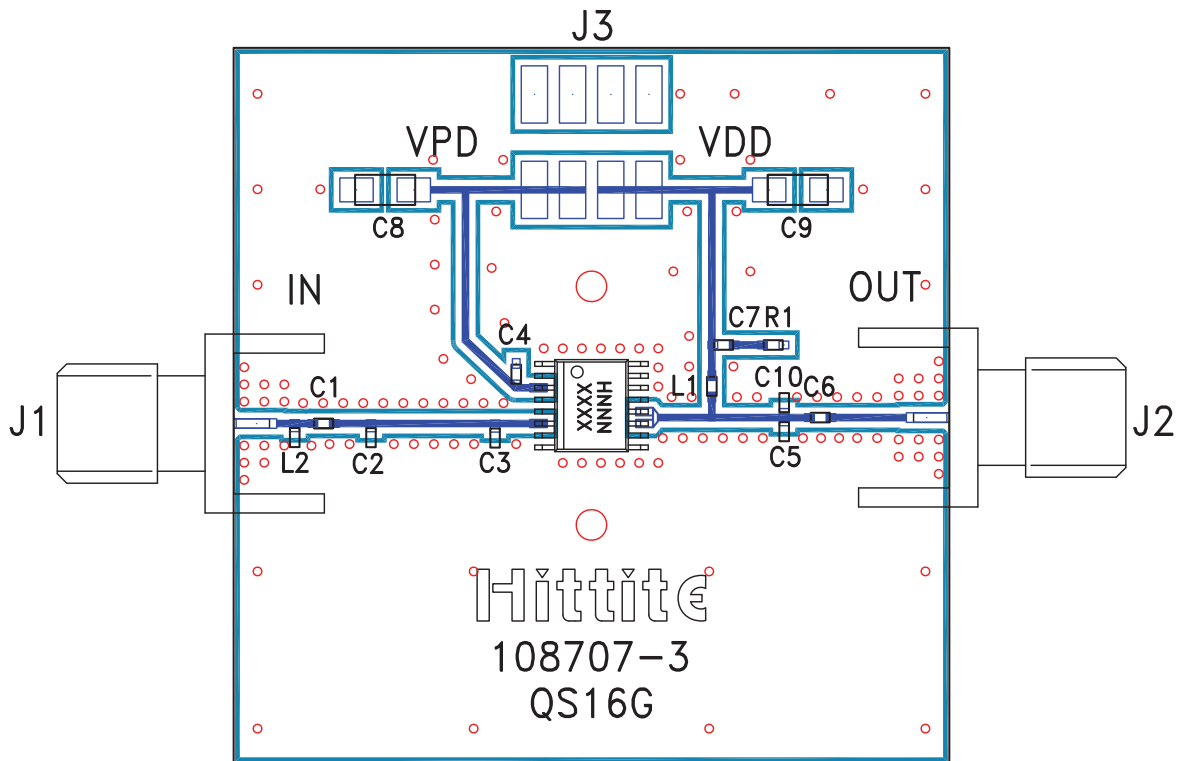
This circuit was used to specify the performance for 810-960 MHz operation. Contact the HMC Applications Group for assistance in optimizing performance for your application.



| | TL1 | TL2 | TL3 | TL4 |
|---|--------|--------|--------|--------|
| Impedance | 50 Ohm | 50 Ohm | 50 Ohm | 50 Ohm |
| Physical Length | 0.26" | 0.08" | 0.12" | 0.15" |
| Electrical Length | 14° | 4° | 6° | 8° |
| PCB Material: 10 mil Rogers 4350, Er = 3.48 | | | | |

| Recommended Component Values | |
|------------------------------|---------|
| C1 | 5 pF |
| C2, C3 | 3.3 pF |
| C4, C7 | 100 pF |
| C5 | 8.2 pF |
| C6 | 56 pF |
| C8, C9 | 2.2 μF |
| C10 | 1 pF |
| L1 | 30 nH |
| L2 | 20 nH |
| R1 | 5.6 Ohm |

900 MHz Evaluation PCB



List of Materials for Evaluation PCB 108709-900 [1]

| Item | Description |
|---------|---------------------------------------|
| J1 - J2 | PCB Mount SMA Connector |
| J3 | 2 mm DC Header |
| C1 | 5.0 pF Capacitor, 0402 Pkg. |
| C2, C3 | 3.3 pF Capacitor, 0402 Pkg. |
| C4, C7 | 100 pF Capacitor, 0402 Pkg. |
| C5 | 8.2 pF Capacitor, 0402 Pkg. |
| C6 | 56 pF Capacitor, 0402 Pkg. |
| C8, C9 | 2.2 μ F Capacitor, Tantalum |
| C10 | 1.0 pF Capacitor, 0402 Pkg. |
| L1 | 30 nH Inductor, 0402 Pkg. |
| L2 | 20 nH Inductor, 0402 Pkg. |
| R1 | 5.6 Ohm Resistor, 0402 Pkg. |
| U1 | HMC453QS16G / HMC453QS16GE Linear Amp |
| PCB [2] | 108707 Evaluation PCB, 10 mils |

[1] Reference this number when ordering complete evaluation PCB

[2] Circuit Board Material: Rogers 4350, Er = 3.48

The circuit board used in this application should use RF circuit design techniques. Signal lines should have 50 ohm impedance while the package ground leads and exposed paddle should be connected directly to the ground plane similar to that shown. A sufficient number of via holes should be used to connect the top and bottom ground planes. The evaluation board should be mounted to an appropriate heat sink. The evaluation circuit board shown is available from Hittite upon request.



1900 MHz Application Circuit

This circuit was used to specify the performance for 1710-1990 MHz operation. Contact the HMC Applications Group for assistance in optimizing performance for your application.



| | TL1 | TL2 |
|---|--------|--------|
| Impedance | 50 Ohm | 50 Ohm |
| Physical Length | 0.04" | 0.04" |
| Electrical Length | 4° | 4° |
| PCB Material: 10 mil Rogers 4350, Er = 3.48 | | |

| Recommended Component Values | |
|------------------------------|----------|
| C1 | 0.8 pF |
| C2 | 1.2 pF |
| C3, C6 | 100 pF |
| C4 | 4.7 pF |
| C5 | 15 pF |
| C7, C8 | 2.2 μF |
| L1 | 18 nH |
| L2 | 20 nH |
| R1 | 5.6 Ohms |

1900 MHz Evaluation PCB



List of Materials for Evaluation PCB 108721-1900 [1]

| Item | Description |
|---------|--|
| J1 - J2 | PCB Mount SMA Connector |
| J3 | 2 mm DC Header |
| C1 | 0.8 pF Capacitor, 0402 Pkg. |
| C2 | 1.2 pF Capacitor, 0402 Pkg. |
| C3, C6 | 100 pF Capacitor, 0402 Pkg. |
| C4 | 4.7 pF Capacitor, 0402 Pkg. |
| C5 | 15 pF Capacitor, 0402 Pkg. |
| C7, C8 | 2.2 μ F Capacitor, Tantalum |
| L1 | 18 nH Inductor, 0402 Pkg. |
| L2 | 20 nH Inductor, 0402 Pkg. |
| R1 | 5.6 Ohm Resistor, 0402 Pkg. |
| U1 | HMC453QS16G / HMC453QS16GE Linear Amp |
| PCB [2] | 108719 Evaluation PCB, 10 mils |

[1] Reference this number when ordering complete evaluation PCB

[2] Circuit Board Material: Rogers 4350, Er = 3.48

The circuit board used in this application should use RF circuit design techniques. Signal lines should have 50 ohm impedance while the package ground leads and exposed paddle should be connected directly to the ground plane similar to that shown. A sufficient number of via holes should be used to connect the top and bottom ground planes. The evaluation board should be mounted to an appropriate heat sink. The evaluation circuit board shown is available from Hittite upon request.

2100 MHz Application Circuit

This circuit was used to specify the performance for 2100-2170 MHz operation. Contact the HMC Applications Group for assistance in optimizing performance for your application.



| | TL1 | TL2 |
|---|--------|--------|
| Impedance | 50 Ohm | 50 Ohm |
| Physical Length | 0.04" | 0.04" |
| Electrical Length | 5° | 5° |
| PCB Material: 10 mil Rogers 4350, Er = 3.48 | | |

| Recommended Component Values | |
|------------------------------|---------|
| C1 | 0.8 pF |
| C2 | 1 pF |
| C3, C6 | 100 pF |
| C4 | 3.9 pF |
| C5 | 15 pF |
| C7, C8 | 2.2 μF |
| L1 | 12 nH |
| L2 | 20 nH |
| R1 | 5.1 Ohm |

2100 MHz Evaluation PCB



List of Materials for Evaluation PCB 10994-2100 [1]

| Item | Description |
|---------|--|
| J1 - J2 | PCB Mount SMA Connector |
| J3 | 2 mm DC Header |
| C1 | 0.8 pF Capacitor, 0402 Pkg. |
| C2 | 1.0 pF Capacitor, 0402 Pkg. |
| C3, C6 | 100 pF Capacitor, 0402 Pkg. |
| C4 | 3.9 pF Capacitor, 0402 Pkg. |
| C5 | 15 pF Capacitor, 0402 Pkg. |
| C7, C8 | 2.2 μ F Capacitor, Tantalum |
| L1 | 12 nH Inductor, 0402 Pkg. |
| L2 | 20 nH Inductor, 0402 Pkg. |
| R1 | 5.1 Ohm Resistor, 0402 Pkg. |
| U1 | HMC453QS16G / HMC453QS16GE Linear Amp |
| PCB [2] | 108719 Evaluation PCB, 10 mils |

[1] Reference this number when ordering complete evaluation PCB

[2] Circuit Board Material: Rogers 4350, $\epsilon_r = 3.48$

The circuit board used in this application should use RF circuit design techniques. Signal lines should have 50 ohm impedance while the package ground leads and exposed paddle should be connected directly to the ground plane similar to that shown. A sufficient number of via holes should be used to connect the top and bottom ground planes. The evaluation board should be mounted to an appropriate heat sink. The evaluation circuit board shown is available from Hittite upon request.

Компания «Океан Электроники» предлагает заключение долгосрочных отношений при поставках импортных электронных компонентов на взаимовыгодных условиях!

Наши преимущества:

- Поставка оригинальных импортных электронных компонентов напрямую с производств Америки, Европы и Азии, а так же с крупнейших складов мира;
- Широкая линейка поставок активных и пассивных импортных электронных компонентов (более 30 млн. наименований);
- Поставка сложных, дефицитных, либо снятых с производства позиций;
- Оперативные сроки поставки под заказ (от 5 рабочих дней);
- Экспресс доставка в любую точку России;
- Помощь Конструкторского Отдела и консультации квалифицированных инженеров;
- Техническая поддержка проекта, помощь в подборе аналогов, поставка прототипов;
- Поставка электронных компонентов под контролем ВП;
- Система менеджмента качества сертифицирована по Международному стандарту ISO 9001;
- При необходимости вся продукция военного и аэрокосмического назначения проходит испытания и сертификацию в лаборатории (по согласованию с заказчиком);
- Поставка специализированных компонентов военного и аэрокосмического уровня качества (Xilinx, Altera, Analog Devices, Intersil, Interpoint, Microsemi, Actel, Aeroflex, Peregrine, VPT, Syfer, Eurofarad, Texas Instruments, MS Kennedy, Miteq, Cobham, E2V, MA-COM, Hittite, Mini-Circuits, General Dynamics и др.);

Компания «Океан Электроники» является официальным дистрибьютором и эксклюзивным представителем в России одного из крупнейших производителей разъемов военного и аэрокосмического назначения «JONHON», а так же официальным дистрибьютором и эксклюзивным представителем в России производителя высокотехнологичных и надежных решений для передачи СВЧ сигналов «FORSTAR».



JONHON

«JONHON» (основан в 1970 г.)

Разъемы специального, военного и аэрокосмического назначения:

(Применяются в военной, авиационной, аэрокосмической, морской, железнодорожной, горно- и нефтедобывающей отраслях промышленности)

«FORSTAR» (основан в 1998 г.)

ВЧ соединители, коаксиальные кабели, кабельные сборки и микроволновые компоненты:

(Применяются в телекоммуникациях гражданского и специального назначения, в средствах связи, РЛС, а так же военной, авиационной и аэрокосмической отраслях промышленности).



Телефон: 8 (812) 309-75-97 (многоканальный)

Факс: 8 (812) 320-03-32

Электронная почта: ocean@oceanchips.ru

Web: <http://oceanchips.ru/>

Адрес: 198099, г. Санкт-Петербург, ул. Калинина, д. 2, корп. 4, лит. А