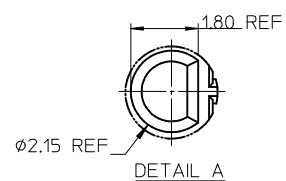
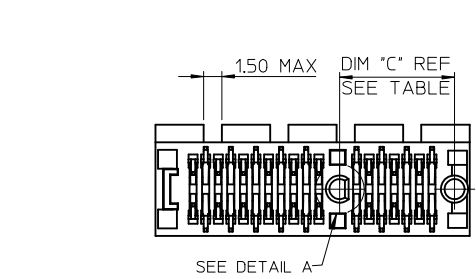
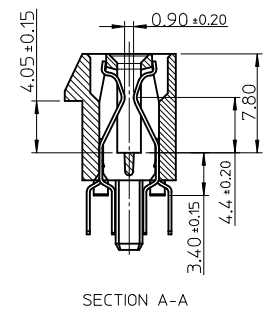
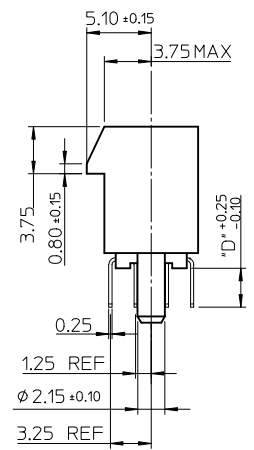
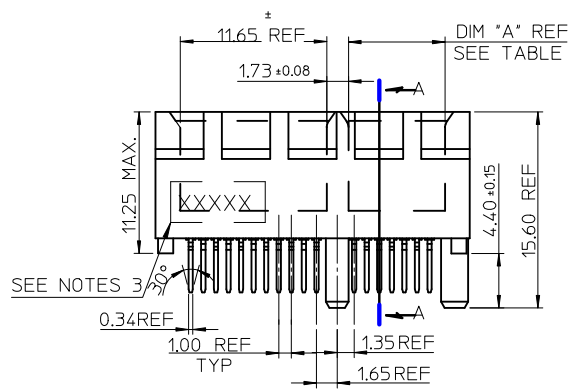


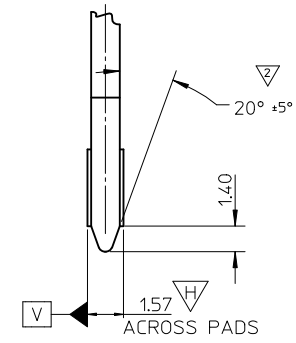
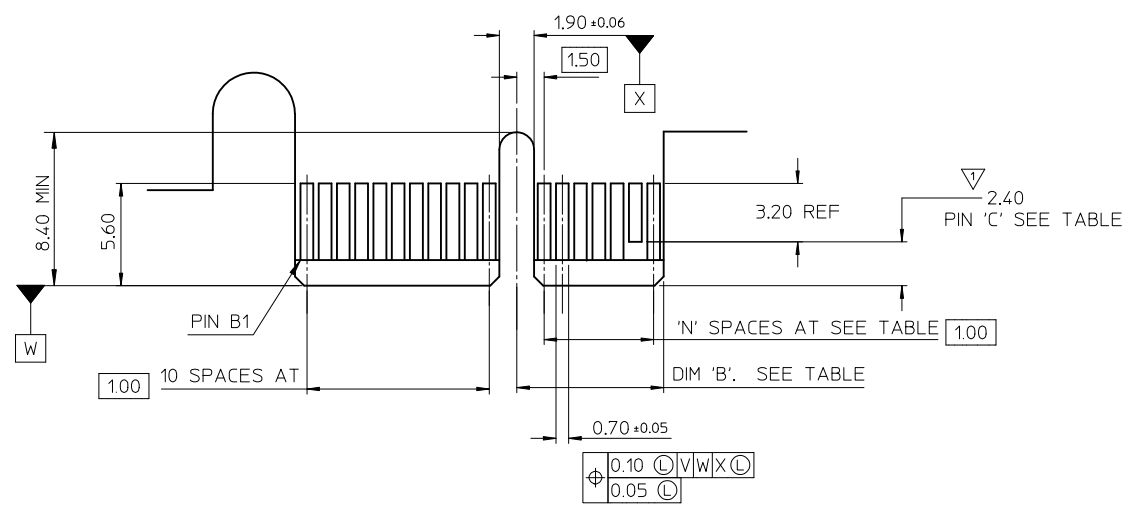
- NOTES:
- 1.MATERIALS:
1-1.HOUSING: SEE TABLE ,GLASS FIBER FILLED UL94V-0, COLOR: SEE TABLE.
1-2.CONTACT: SEE TABLE
 - 2.PLATING:
2-1.CONTACT AREA: GOLD, THICKNESS : SEE TABLE .
2-2.SOLDER TAIL: 100 MICRINCH MIN. TIN PLATING.
2-3.UNDER PLATING: NICKEL PLATING OVERALL.
 - 3.WEEK CODE: XX(YEAR) XXI(WEEK) X(LOCATION),
 - 4.PRODUCT SPECIFICATION REFER TO PS-87715-200.
 - 5.PACKAGING SPECIFICATION REFER TO PK-87715-207.
 - 6.TEST SUMMARY:REFER TO TS-87715-207.
 - 7.LEAD FREE AND ROHS COMPLIANCE PRODUCT.



| CONNECTOR LINK WIDTH | # POS REF | N | DIM 'A' | DIM 'B' | DIM 'C' |
|----------------------|-----------|----|---------|---------|---------|
| X1 | 36 | 6 | 7.65 | 25.00 | 9.15 |
| X4 | 64 | 20 | 21.65 | 39.00 | 23.15 |
| X8 | 98 | 37 | 38.65 | 56.00 | 40.15 |
| X16 | 164 | 70 | 71.65 | 89.00 | 73.15 |

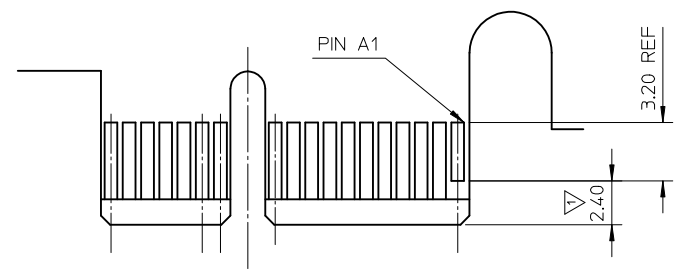
| PCB THK (REF) | DIM 'D' |
|---------------|---------|
| 1.60 | 2.30 |
| 1.58 | 2.54 |
| 2.36 | 3.00 |

| | | | | | | | | | |
|--|--------------------------------------|---------------------------------------|--|----------------------------|--------------|-------------|---|------------------------|---|
| REVISED IEC NO: SH2010-0468 DRWR:RZHANG 2010/06/15 CHYKD:ALLEN L LIN 2004/07/20 APPR:X.J.SONG 2010/07/02 | QUALITY SYMBOLS F=0 E=0 A=0 | GENERAL TOLERANCES (UNLESS SPECIFIED) | | DIMENSION STYLE MM ONLY | | SCALE | DESIGN UNITS | THIRD ANGLE PROJECTION | |
| | | | mm | INCH | DRAWN BY | DATE | TITLE | | PCI EXPRESS EDGE CARD CONNECTOR (LEAD FREE VERSION) |
| | | 4 PLACES | ± --- | ± --- | TOM | 2004/07/20 | MOLEX INCORPORATED | | |
| | | 3 PLACES | ± --- | ± --- | CHECKED BY | DATE | | | DOCUMENT NO. |
| | | | 2 PLACES | ± 0.25 | ± --- | ALLEN LIN | 2004/07/20 | SD-87715-207 | |
| | | | 1 PLACE | ± 0.25 | ± --- | APPROVED BY | DATE | | 1 OF 4 |
| | | | ANGULAR ± 3 ° | | WILSON | | 2004/07/20 | | |
| | | | DRAFT WHERE APPLICABLE MUST REMAIN WITHIN DIMENSIONS | | MATERIAL NO. | | SEE SHEET 4 | | |
| | | | | | SIZE A3 | | THIS DRAWING CONTAINS INFORMATION THAT IS PROPRIETARY TO MOLEX INCORPORATED AND SHOULD NOT BE USED WITHOUT WRITTEN PERMISSION | | |



← I/O PANEL DIRECTION

PRIMARY (COMPONENT) SIDE



I/O PANEL DIRECTION →

SECONDARY (SOLDER) SIDE

- 1 NO TIE BAR PERMITTED FROM CARD EDGE TO LEADING EDGE OF PAD FOR PINS A1 AND "C".
- 2 CHAMFER EDGES MUST BE FREE OF CUTTING BURRS.
- 3. TOLERANCE: .XX±.13

| CONNECTOR LINK WIDTH | # POS REF | N | DIM 'B' | 'C' Δ |
|----------------------|-----------|----|---------|----------------------|
| X1 | 36 | 6 | 8.15 | B17 |
| X4 | 64 | 20 | 22.15 | B17, B31 |
| X8 | 98 | 37 | 39.15 | B17, B31 B48 |
| X16 | 164 | 70 | 72.15 | B17, B31 B48, B81 |

| | | | | | | | |
|---|-----------------------|---------------------------------------|--|-----------------|---|---|---------------------------|
| SEE SHEET 1 EC NO: SH2010-0468 DRWR: ZHANG 2010/06/15 CHKD: ALLEN LIN 2004/07/20 APPR: XJ.SONG 2010/07/02 | QUALITY SYMBOLS | GENERAL TOLERANCES (UNLESS SPECIFIED) | | DIMENSION STYLE | SCALE | DESIGN UNITS | THIRD ANGLE PROJECTION |
| | $\nabla_{\text{A}}=0$ | mm | INCH | MM ONLY | | METRIC | |
| | $\nabla_{\text{B}}=0$ | 4 PLACES ± --- ± --- | | DRAWN BY | DATE | TITLE | |
| | $\nabla_{\text{C}}=0$ | 3 PLACES ± --- ± --- | | TOM | 2004/07/20 | PCI EXPRESS EDGE CARD CONNECTOR (LEAD FREE VERSION) | |
| | 2 PLACES ± 0.25 ± --- | | CHECKED BY | DATE | MOLEX INCORPORATED | | |
| | 1 PLACE ± 0.25 ± --- | | ALLEN LIN | 2004/07/20 | | MATERIAL NO. SEE SHEET 4 | DOCUMENT NO. SD-87715-207 |
| | ANGULAR ± 3° | | APPROVED BY | DATE | SHEET NO. 3 OF 4 | | |
| | | | WILSON | 2004/07/20 | | | |
| | | | DRAFT WHERE APPLICABLE MUST REMAIN WITHIN DIMENSIONS | | THIS DRAWING CONTAINS INFORMATION THAT IS PROPRIETARY TO MOLEX INCORPORATED AND SHOULD NOT BE USED WITHOUT WRITTEN PERMISSION | | |

| MOLEX P/N | CIRCUIT SIZE | HOUSING MATERIAL | HOUSING COLOR | TERMINAL MATERIAL | CONTACT PLATING | SOLDER TAIL 'D' LENGTH | |
|------------|--------------|------------------|---------------|-------------------|-----------------|------------------------|------|
| 87715-9001 | 36 | NYLON46 | BLACK | PHOSPHOR BRONZE | 10 MICROINCH | 2.54 | |
| 87715-9003 | | | | | GOLD FLASH | | |
| 87715-9004 | | | | | 10 MICROINCH | 3.00 | |
| 87715-9007 | | | | | GOLD FLASH | | |
| 87715-9008 | | | | | 15 MICROINCH | | 2.30 |
| | | | | | | | |

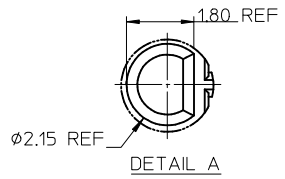
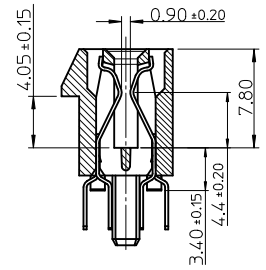
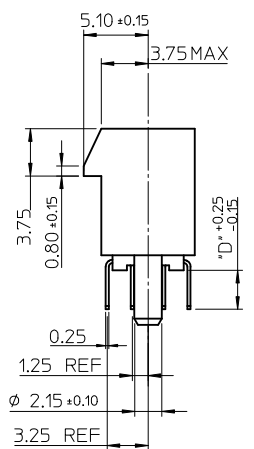
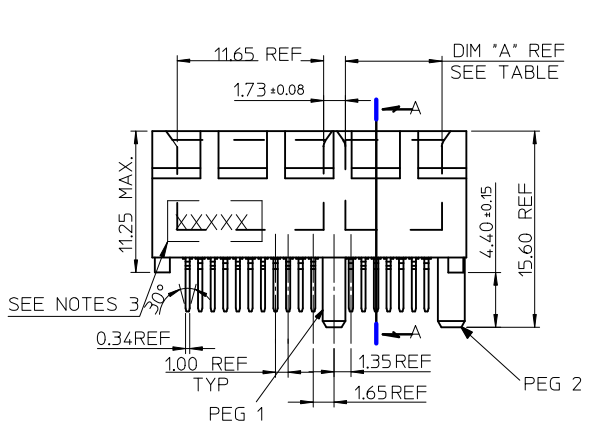
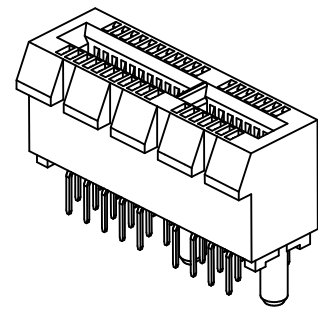
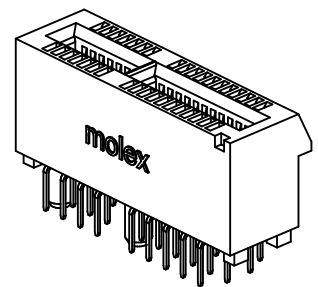
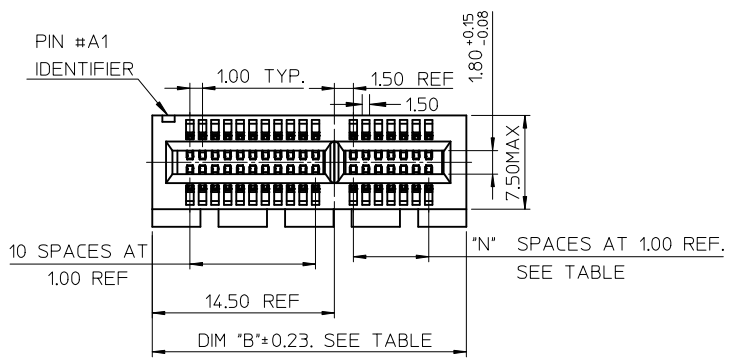
| MOLEX P/N | CIRCUIT SIZE | HOUSING MATERIAL | HOUSING COLOR | TERMINAL MATERIAL | CONTACT PLATING | SOLDER TAIL 'D' LENGTH |
|------------|--------------|------------------|---------------|-------------------|-----------------|------------------------|
| 87715-9100 | 64 | NYLON46 | BLACK | PHOSPHOR BRONZE | GOLD FLASH | 2.54 |
| 87715-9101 | | | | | 10 MICROINCH | |
| 87715-9102 | | | | | 15 MICROINCH | 3.00 |
| 87715-9103 | | | | | GOLD FLASH | |
| 87715-9104 | | | | | 10 MICROINCH | |
| 87715-9105 | | | | | 15 MICROINCH | |
| 87715-9106 | | | | | 30 MICROINCH | 2.54 |
| 87715-9107 | | | | | GOLD FLASH | 2.30 |
| 87715-9108 | | | | | 15 MICROINCH | |
| 87715-9109 | | | | | 30 MICROINCH | |

| MOLEX P/N | CIRCUIT SIZE | HOUSING MATERIAL | HOUSING COLOR | TERMINAL MATERIAL | CONTACT PLATING | SOLDER TAIL 'D' LENGTH |
|------------|--------------|------------------|---------------|-------------------|-----------------|------------------------|
| 87715-9200 | 98 | NYLON46 | BLACK | PHOSPHOR BRONZE | GOLD FLASH | 2.54 |
| 87715-9201 | | | | | 10 MICROINCH | |
| 87715-9202 | | | | | 15 MICROINCH | 3.00 |
| 87715-9203 | | | | | GOLD FLASH | |
| 87715-9204 | | | | | 10 MICROINCH | |
| 87715-9205 | | | | | 15 MICROINCH | |
| 87715-9206 | | | | | 30 MICROINCH | 2.54 |
| 87715-9207 | | | | | GOLD FLASH | 2.30 |
| 87715-9208 | | | | | 15 MICROINCH | |
| 87715-9209 | | | | | 30 MICROINCH | |

| MOLEX P/N | CIRCUIT SIZE | HOUSING MATERIAL | HOUSING COLOR | TERMINAL MATERIAL | CONTACT PLATING | SOLDER TAIL 'D' LENGTH |
|------------|--------------|------------------|---------------|-------------------|-----------------|------------------------|
| 87715-9602 | 98 | NYLON46 | BLACK | BRASS | 15 MICROINCH | 2.54 |

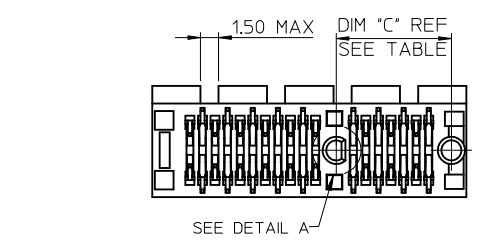
| MOLEX P/N | CIRCUIT SIZE | HOUSING MATERIAL | HOUSING COLOR | TERMINAL MATERIAL | CONTACT PLATING | SOLDER TAIL 'D' LENGTH |
|------------|--------------|------------------|---------------|-------------------|-----------------|------------------------|
| 87715-9301 | 164 | NYLON46 | BLACK | PHOSPHOR BRONZE | 10 MICROINCH | 2.54 |
| 87715-9304 | | | | | | 3.00 |
| 87715-9307 | | | | | GOLD FLASH | 2.30 |
| 87715-9308 | | | | | 15 MICROINCH | |

| | | | | | | | |
|--|-------------------------------|--|-----------------|---|--------------|------------------------|--|
| SEE SHEET 1 EC NO: SH2010-0468 DRW:RZHANG 2010/06/15 CHKD:ALLEN LIN 2004/07/20 APPR:XJ.SONG 2010/07/02 | QUALITY SYMBOLS | GENERAL TOLERANCES (UNLESS SPECIFIED) | DIMENSION STYLE | SCALE | DESIGN UNITS | THIRD ANGLE PROJECTION | |
| | $F_A=0$ $F_C=0$ $F_P=0$ | mm INCH 4 PLACES ± --- ± --- 3 PLACES ± --- ± --- 2 PLACES ± 0.25 ± --- 1 PLACE ± 0.25 ± --- ANGULAR ± 3 ° | MM ONLY | DRAWN BY: TOM DATE: 2004/07/20 CHECKED BY: ALLEN LIN DATE: 2004/07/20 APPROVED BY: WILSON DATE: 2004/07/20 | METRIC | | |
| | | DRAFT WHERE APPLICABLE MUST REMAIN WITHIN DIMENSIONS | SEE TABLE | TITLE: PCI EXPRESS EDGE CARD CONNECTOR (LEAD FREE VERSION) MOLEX INCORPORATED | | | |
| | | | | MATERIAL NO. | DOCUMENT NO. | SHEET NO. | |

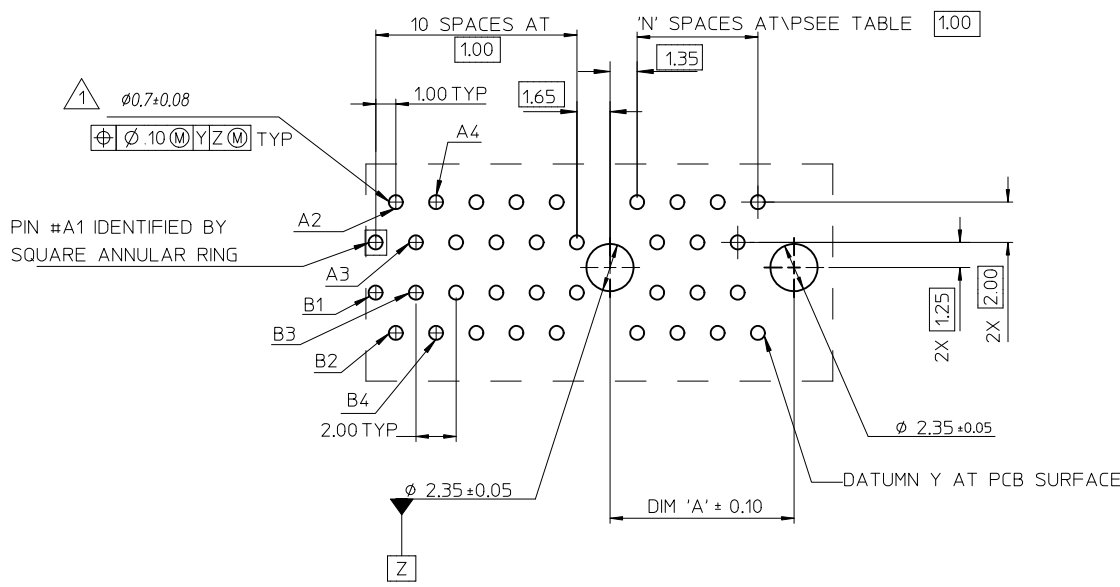


- NOTES:
- MATERIALS:
 - 1-1.HOUSING: SEE TABLE ,GLASS FIBER FILLED UL94V-0, COLOR: SEE TABLE.
 - 1-2.CONTACT: SEE TABLE
 - PLATING:
 - 2-1.CONTACT AREA: GOLD, THICKNESS : SEE TABLE .
 - 2-2.SOLDER TAIL: 100 MICRONCH MIN. TIN PLATING.
 - 2-3.UNDER PLATING: NICKEL PLATING OVERALL.
 - DATE CODE: YY MM DD.
 - PRODUCT SPECIFICATION REFER TO PS-87715-200.
 - TEST SUMMARY:REFER TO TS-87715-207.

| CONNECTOR LINK WIDTH | # POS REF | N | DIM 'A' | DIM 'B' | DIM 'C' | PCB THK (REF) | DIM 'D' |
|----------------------|-----------|----|---------|---------|---------|---------------|---------|
| X1 | 36 | 6 | 7.65 | 25.00 | 9.15 | 1.58 | 2.54 |
| X16 | 164 | 70 | 71.65 | 89.00 | 73.15 | 2.36 | 3.00 |



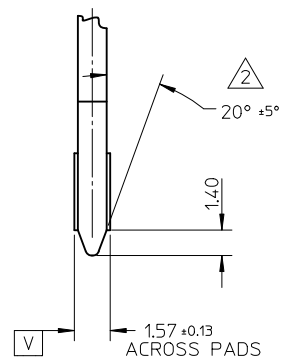
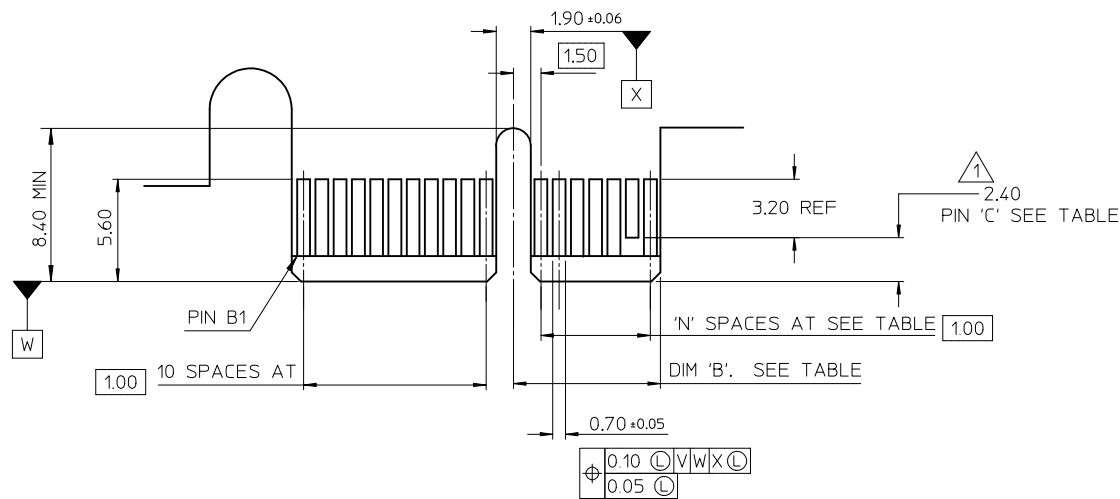
| | | | | | | | |
|--|--|--|---|-----------------------------|---|------------------------|--|
| REVISED EC NO: SH2011-0358 DRWN:FYANG05 2011/06/02 CHKD: APPR:RZHANG 2011/06/07 REV | QUALITY SYMBOLS | GENERAL TOLERANCES (UNLESS SPECIFIED) | DIMENSION STYLE | SCALE | DESIGN UNITS | THIRD ANGLE PROJECTION | |
| | $\nabla = 0$ $\nabla = 0$ $\nabla = 0$ | mm INCH 4 PLACES ± --- ± --- 3 PLACES ± --- ± --- 2 PLACES ± 0.25 ± --- 1 PLACE ± 0.25 ± --- ANGULAR ± 3 ° | MM ONLY | METRIC | | | |
| | | DRAFT WHERE APPLICABLE MUST REMAIN WITHIN DIMENSIONS | DRAWN BY: DAVID HU DATE: 2007/05/14 CHECKED BY: HARVEY DATE: 2007/05/14 APPROVED BY: JENNY CHEN DATE: 2007/05/14 MATERIAL NO. | TITLE | PCI EXPRESS EDGE CARD CONNECTOR (LEAD FREE VERSION) | | |
| | | | SEE SHEET 4 THIS DRAWING CONTAINS INFORMATION THAT IS PROPRIETARY TO MOLEX INCORPORATED AND SHOULD NOT BE USED WITHOUT WRITTEN PERMISSION | MOLEX MOLEX INCORPORATED | DOCUMENT NO. SD-87715-901 | SHEET NO. 1 OF 4 | |



1 THE HORIZONTAL AXIS FOR THE HOLE PATTERN IS ESTABLISHED BY A LINE THROUGH THE CENTER OF THE TWO $\phi 2.35$ HOLES. THE VERTICAL AXIS IS 90° TO THE HORIZONTAL AXIS, THROUGH THE CENTER OF DATUM Z

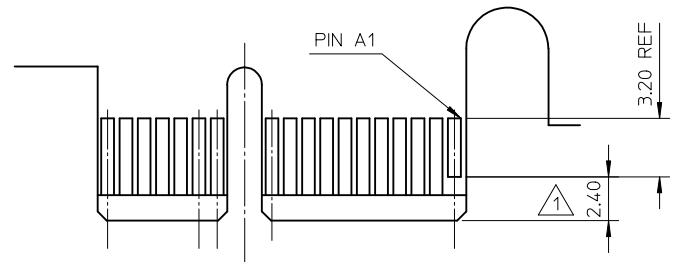
| CONNECTOR LINK WIDTH | # POS REF | N | DIM 'A' |
|----------------------|-----------|----|---------|
| X1 | 36 | 6 | 9.15 |
| X16 | 164 | 70 | 73.15 |

| | | | | | | | |
|--|--|---|---|---|--------------|---|---|
| SEE SHEET 1 EC NO: SH2011-0358 DRWN: F YANG05 CH'KD: APPR: RZHANG REV | QUALITY SYMBOLS | GENERAL TOLERANCES (UNLESS SPECIFIED) | DIMENSION STYLE | SCALE | DESIGN UNITS | THIRD ANGLE PROJECTION | |
| | $F_A=0$ $F_C=0$ $F_P=0$ | mm INCH 4 PLACES ± --- ± --- 3 PLACES ± --- ± --- 2 PLACES ± 0.25 ± --- 1 PLACE ± 0.25 ± --- ANGULAR ± 3° | MM ONLY | DRAWN BY: DAVID HU DATE: 2007/05/14 CHECKED BY: HARVEY DATE: 2007/05/14 APPROVED BY: JENNY CHEN DATE: 2007/05/14 MATERIAL NO. | TITLE | PCI EXPRESS EDGE CARD CONNECTOR (LEAD FREE VERSION) | MOLEX INCORPORATED DOCUMENT NO. SD-87715-901 SHEET NO. 2 OF 4 |
| | DRAFT WHERE APPLICABLE MUST REMAIN WITHIN DIMENSIONS | SEE SHEET 1 | THIS DRAWING CONTAINS INFORMATION THAT IS PROPRIETARY TO MOLEX INCORPORATED AND SHOULD NOT BE USED WITHOUT WRITTEN PERMISSION | | | | |



← I/O PANEL DIRECTION

PRIMARY (COMPONENT) SIDE



I/O PANEL DIRECTION →

SECONDARY (SOLDER) SIDE

- 1 NO TIE BAR PERMITTED FROM CARD EDGE TO LEADING EDGE OF PAD FOR PINS A1 AND "C".
- 2 CHAMFER EDGES MUST BE FREE OF CUTTING BURRS.
- 3 TOLERANCE: .XX±.13

| CONNECTOR LINK WIDTH | # POS REF | N | DIM 'B' | 'C' 1 |
|----------------------|-----------|----|---------|---------------------|
| X1 | 36 | 6 | 8.15 | B17 |
| X16 | 164 | 70 | 72.15 | B17, B31 B48,B81 |

| SEE SHEET 1 EC NO: SH2011-0358 DRWN: YANG05 CHKD: APPR: RZHANG | 2011/06/02 2011/06/07 | QUALITY SYMBOLS | GENERAL TOLERANCES (UNLESS SPECIFIED) | | DIMENSION STYLE | | SCALE | DESIGN UNITS | THIRD ANGLE PROJECTION | | | | | | | | | | | | | | | | | | | | | |
|--|--------------------------|-------------------------------------|---|--------------|-----------------|--|----------|--------------------|------------------------|----------|-------|-------|----------|--------|-------|---------|--------|-------|--|----|------|--------|-------|--------|-------|---|--|---------|--------|--|
| | | $F_A = 0$ $F_C = 0$ $F_B = 0$ | <table border="1"> <tr> <th></th> <th>mm</th> <th>INCH</th> </tr> <tr> <td>4 PLACES</td> <td>± ---</td> <td>± ---</td> </tr> <tr> <td>3 PLACES</td> <td>± ---</td> <td>± ---</td> </tr> <tr> <td>2 PLACES</td> <td>± 0.25</td> <td>± ---</td> </tr> <tr> <td>1 PLACE</td> <td>± 0.25</td> <td>± ---</td> </tr> </table> | | mm | INCH | 4 PLACES | ± --- | ± --- | 3 PLACES | ± --- | ± --- | 2 PLACES | ± 0.25 | ± --- | 1 PLACE | ± 0.25 | ± --- | <table border="1"> <tr> <th>mm</th> <th>INCH</th> </tr> <tr> <td>± 0.25</td> <td>± ---</td> </tr> <tr> <td>± 0.25</td> <td>± ---</td> </tr> </table> | mm | INCH | ± 0.25 | ± --- | ± 0.25 | ± --- | DRAWN BY: DAVID HU CHECKED BY: HARVEY APPROVED BY: JENNY CHEN | DATE: 2007/05/14 DATE: 2007/05/14 DATE: 2007/05/14 | MM ONLY | METRIC | <input checked="" type="checkbox"/> THIRD ANGLE PROJECTION |
| | | | mm | INCH | | | | | | | | | | | | | | | | | | | | | | | | | | |
| | | 4 PLACES | ± --- | ± --- | | | | | | | | | | | | | | | | | | | | | | | | | | |
| 3 PLACES | ± --- | ± --- | | | | | | | | | | | | | | | | | | | | | | | | | | | | |
| 2 PLACES | ± 0.25 | ± --- | | | | | | | | | | | | | | | | | | | | | | | | | | | | |
| 1 PLACE | ± 0.25 | ± --- | | | | | | | | | | | | | | | | | | | | | | | | | | | | |
| mm | INCH | | | | | | | | | | | | | | | | | | | | | | | | | | | | | |
| ± 0.25 | ± --- | | | | | | | | | | | | | | | | | | | | | | | | | | | | | |
| ± 0.25 | ± --- | | | | | | | | | | | | | | | | | | | | | | | | | | | | | |
| DRAFT WHERE APPLICABLE MUST REMAIN WITHIN DIMENSIONS | | ANGULAR ± 3° | | SEE SHEET 1 | | TITLE: PCI EXPRESS EDGE CARD CONNECTOR (LEAD FREE VERSION) | | MOLEX INCORPORATED | | | | | | | | | | | | | | | | | | | | | | |
| | | | | MATERIAL NO. | | DOCUMENT NO. SD-87715-901 | | SHEET NO. 3 OF 4 | | | | | | | | | | | | | | | | | | | | | | |



| MOLEX P/N | CIRCUIT SIZE | HOUSING MATERIAL | HOUSING COLOR | TERMINAL MATERIAL | CONTACT PLATING | SOLDER TAIL 'D' LENGTH | PEG 1 | PEG 2 | DESCRIPTION |
|------------|--------------|------------------|---------------|-------------------|-----------------|------------------------|-------|-------|-------------|
| 87715-9000 | 36 | NYLON46 | BLACK | PHOSPHOR BRONZE | GOLD FLASH | 2.54 | WITH | WITH | TOOLED |
| 87715-9002 | | | | | 15 MICROINCH | | | | |
| 87715-9005 | | | | | 15 MICROINCH | 3.00 | | | |
| 87715-9006 | | | | | 30 MICROINCH | | | | |
| 87715-9009 | | | | | 30 MICROINCH | | | | |



| MOLEX P/N | CIRCUIT SIZE | HOUSING MATERIAL | HOUSING COLOR | TERMINAL MATERIAL | CONTACT PLATING | SOLDER TAIL 'D' LENGTH | PEG 1 | PEG 2 | DESCRIPTION |
|------------|--------------|------------------|---------------|-------------------|-----------------|------------------------|-------|-------|-------------|
| 87715-9300 | 164 | NYLON46 | BLACK | PHOSPHOR BRONZE | GOLD FLASH | 2.54 | WITH | WITH | TOOLED |
| 87715-9302 | | | | | 15 MICROINCH | | | | |
| 87715-9303 | | | | | GOLD FLASH | 3.00 | | | |
| 87715-9305 | | | | | 15 MICROINCH | | | | |
| 87715-9306 | | | | | 30 MICROINCH | | | | |
| 87715-9309 | | | | | 30 MICROINCH | | | | |

| | | | | | | |
|--|-------------------------------|--|---|--|--|------------------------|
| SEE SHEET 1 EC NO: SH2011-0358 DRAWN: YANG05 CHK'D: APPR: RZHANG 2011/06/02 2011/06/07 | QUALITY SYMBOLS | GENERAL TOLERANCES (UNLESS SPECIFIED) | DIMENSION STYLE | SCALE | DESIGN UNITS | THIRD ANGLE PROJECTION |
| | $F_A=0$ $F_C=0$ $F_P=0$ | mm INCH 4 PLACES ± --- ± --- 3 PLACES ± --- ± --- 2 PLACES ± 0.25 ± --- 1 PLACE ± 0.25 ± --- ANGULAR ± 3 ° | MM ONLY | | METRIC | |
| | | DRAFT WHERE APPLICABLE MUST REMAIN WITHIN DIMENSIONS | DRAWN BY: DAVID HU DATE: 2007/05/14 CHECKED BY: HARVEY DATE: 2007/05/14 APPROVED BY: JENNY CHEN DATE: 2007/05/14 | TITLE: PCI EXPRESS EDGE CARD CONNECTOR (LEAD FREE VERSION) | | |
| | | | MATERIAL NO. SEE SHEET 1 SIZE: A3 THIS DRAWING CONTAINS INFORMATION THAT IS PROPRIETARY TO MOLEX INCORPORATED AND SHOULD NOT BE USED WITHOUT WRITTEN PERMISSION | DOCUMENT NO. SD-87715-901 | MOLEX INCORPORATED SHEET NO. 4 OF 4 | |

Компания «Океан Электроники» предлагает заключение долгосрочных отношений при поставках импортных электронных компонентов на взаимовыгодных условиях!

Наши преимущества:

- Поставка оригинальных импортных электронных компонентов напрямую с производств Америки, Европы и Азии, а так же с крупнейших складов мира;
- Широкая линейка поставок активных и пассивных импортных электронных компонентов (более 30 млн. наименований);
- Поставка сложных, дефицитных, либо снятых с производства позиций;
- Оперативные сроки поставки под заказ (от 5 рабочих дней);
- Экспресс доставка в любую точку России;
- Помощь Конструкторского Отдела и консультации квалифицированных инженеров;
- Техническая поддержка проекта, помощь в подборе аналогов, поставка прототипов;
- Поставка электронных компонентов под контролем ВП;
- Система менеджмента качества сертифицирована по Международному стандарту ISO 9001;
- При необходимости вся продукция военного и аэрокосмического назначения проходит испытания и сертификацию в лаборатории (по согласованию с заказчиком);
- Поставка специализированных компонентов военного и аэрокосмического уровня качества (Xilinx, Altera, Analog Devices, Intersil, Interpoint, Microsemi, Actel, Aeroflex, Peregrine, VPT, Syfer, Eurofarad, Texas Instruments, MS Kennedy, Miteq, Cobham, E2V, MA-COM, Hittite, Mini-Circuits, General Dynamics и др.);

Компания «Океан Электроники» является официальным дистрибьютором и эксклюзивным представителем в России одного из крупнейших производителей разъемов военного и аэрокосмического назначения «JONHON», а так же официальным дистрибьютором и эксклюзивным представителем в России производителя высокотехнологичных и надежных решений для передачи СВЧ сигналов «FORSTAR».



JONHON

«JONHON» (основан в 1970 г.)

Разъемы специального, военного и аэрокосмического назначения:

(Применяются в военной, авиационной, аэрокосмической, морской, железнодорожной, горно- и нефтедобывающей отраслях промышленности)

«FORSTAR» (основан в 1998 г.)

ВЧ соединители, коаксиальные кабели, кабельные сборки и микроволновые компоненты:

(Применяются в телекоммуникациях гражданского и специального назначения, в средствах связи, РЛС, а так же военной, авиационной и аэрокосмической отраслях промышленности).



Телефон: 8 (812) 309-75-97 (многоканальный)

Факс: 8 (812) 320-03-32

Электронная почта: ocean@oceanchips.ru

Web: <http://oceanchips.ru/>

Адрес: 198099, г. Санкт-Петербург, ул. Калинина, д. 2, корп. 4, лит. А