



HIGH-SPEED LTE NETWORKING PLATFORM



# DIGI TRANSPORT LR54

High-speed LTE-Advanced and Wi-Fi router in a durable hardware package for demanding M2M applications

Digi TransPort® LR54 is a high-speed LTE-Advanced networking platform designed for retail, commercial and managed networking applications across distributed enterprises. Each device features an LTE-Advanced Cat 6 modem with speeds up to 300 Mbps and support for global deployments with a single hardware version, as well as a 4-port Gigabit Ethernet switch and serial port for console access. The routers include license-free enterprise software features like VPN, firewall and SNMP.

The two FIPS models make use of an embedded FIPS 140-2 validated cryptographic module for all encryption and authentication functions.

The LR54 FIPS model is often used as a VPN gateway to bridge local private subnets through public or untrusted networks, ensuring message privacy and integrity.

The Wi-Fi variant features dual-band, dual-concurrent 5 GHz and 2.4 GHz radios, personal/enterprise security, and multiple SSIDs for maximum range and throughput performance in M2M applications.

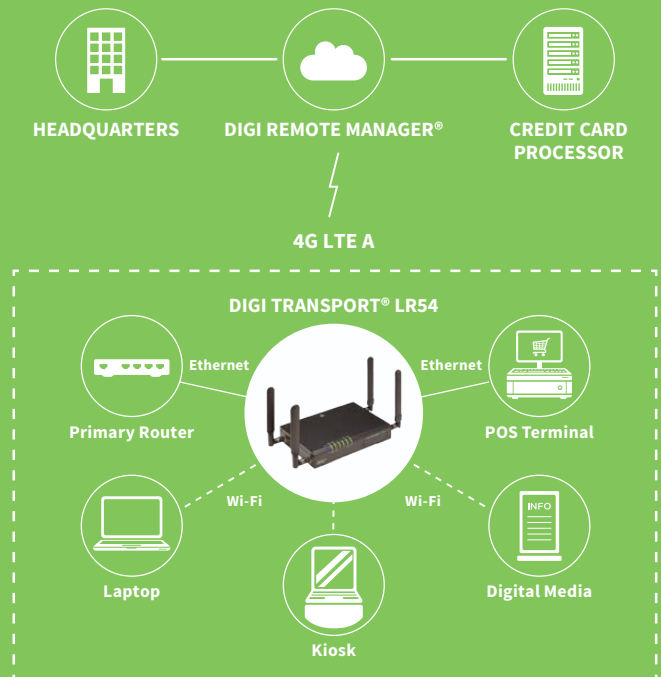
Digi TransPort LR54 is ideal for connecting:

- Retail branch sites
- Digital media installations
- Self-service kiosks
- Security monitoring equipment
- Remote offices/equipment
- Guest and employee Wi-Fi users

## FEATURES AND BENEFITS

- High-speed LTE Advanced for digital content and business networking applications
- Powerful dual Wi-Fi radios provide 802.11 b/g/n/ac connection to local users and end devices
- Automated fail-over/fail-back between Ethernet, cellular (dual SIMs) and IPsec tunnels
- Enables compliance with NIST SP 800-171 requirement for FIPS-validated cryptography
- On-board Python environment for custom programming
- Digi Remote Manager® provides mass configuration, device management and troubleshooting tools
- Digi Foundations™ 1-, 3- or 5-year subscription available

## APPLICATION EXAMPLE



## RELATED PRODUCTS



## SPECIFICATIONS

## Digi TransPort® LR54

## WIRELESS INTERFACES

## CELLULAR\*

<b>LTE/HSPA+</b>	Coverage: North America/EMEA LTE Advanced Cat 6: 700(B12,B13,B29)/800(B20,B26)/850(B5)/900(B8)/AWS(B4)/1800(B3)/1900(B2,B25)/2100(B1)/2300(B30)/2500(B41)/2600(B7) 3G HSPA+: 850/900/AWS/1800/1900/2100 MHz Transfer rate (max): 300 Mbps down, 150 Mbps up Approvals: PTCRB, AT&T, Verizon
<b>CONNECTOR</b>	(2) 50 Ω SMA (center pin: female)
<b>SIM SLOTS</b>	(2) Mini-SIM (2FF)
<b>SIM SECURITY</b>	SIM slot cover plate

## WI-FI

<b>802.11</b>	Wi-Fi maximum data rates: 54 Mbps (802.11a); 11 Mbps (802.11b); 54 Mbps (802.11g); 300 Mbps (802.11n); 866 Mbps (802.11ac)
<b>TX POWER</b>	2.4 GHz 19 dBm (802.11g/n), 19 dBm (802.11b) 5 GHz 22.9 dBm for all modes
<b>RX SENSITIVITY</b>	-87 dBm / 11 Mbps (802.11b) -71 dBm / 54 Mbps and -90 dBm / 6 Mbps (802.11a) -74 dBm / 54 Mbps and -92 dBm / 6 Mbps (802.11g) -66 dBm / 300 Mbps and -92 dBm / 6 Mbps (802.11n 2.4 GHz) -67 dBm / 300 Mbps and -89 dBm / 6 Mbps (802.11n 5 GHz) -57 dBm / 866 Mbps and -83 dBm / 29 Mbps (802.11ac)
<b>MODES</b>	Access point, support for multiple SSID
<b>SECURITY</b>	Mixed WPA/WPA2-personal; WPA2-personal; mixed WPA/WPA2-enterprise; WPA2-enterprise
<b>CONNECTORS</b>	(2) 50 Ω RP-SMA (center pin: male)

## WIRED INTERFACES

## SERIAL

<b>PORTS</b>	(1) DB-9; DCE
<b>STANDARD</b>	RS-232
<b>SIGNAL SUPPORT</b>	TXD, RXD, RTS, CTS, DTR, DCD, DSR, RI
<b>FLOW CONTROL</b>	Software (XON/XOFF), hardware supported

## ETHERNET

<b>PORTS</b>	(4) RJ-45; 10/100/1000 Mbit/s (auto-sensing)
--------------	--

## MANAGEMENT

<b>REMOTE MANAGEMENT</b>	Digi Remote Manager® (cloud based); SNMP v1/v2c/v3 (user installed/managed)
<b>LOCAL MANAGEMENT</b>	Web interface (HTTPS); CLI (SSH, serial port)
<b>MEMORY</b>	256 MB of Flash; 100 MB user available memory

## POWER

<b>INPUT</b>	12 VDC
<b>CONNECTOR</b>	4-pin terminal block; power supply comes with US plug (IEC Type A) and an EU plug (IEC Type C)
<b>CONSUMPTION</b>	13.68 W max, 11.4 W average
<b>DC POWER SUPPLY</b>	100-240 VAC 50/60 Hz

## PHYSICAL

<b>DIMENSIONS (L X W X H)</b>	207 mm x 140 mm x 38 mm (8.15 in x 5.5 in x 1.5 in)
<b>WEIGHT</b>	1.32 kg (2.90 lb)
<b>STATUS LEDs</b>	Power, WWAN signal, WWAN service, SIM 1, SIM 2, 2.4 GHz and 5 GHz LEDs on Wi-Fi version
<b>MATERIAL/RATING**</b>	Industrial (metal) / IP30
<b>MOUNTING</b>	Wall mount bracket sold separately

\* Transfer rates are network operator dependent

\*\*The enclosure rating is self-declared and has not been formally verified by an independent lab

## SPECIFICATIONS

## Digi TransPort® LR54

### ENVIRONMENTAL

OPERATING TEMPERATURE ***	-20° C to 70° C (-4° F to 158° F)
STORAGE TEMPERATURE	-40° C to 85° C (-40° F to 185° F)
RELATIVE HUMIDITY	0% to 95% (non-condensing) @ 25° C (77° F)

### APPROVALS

CELLULAR	PTCRB
WI-FI	Wi-Fi Alliance® Wi-Fi CERTIFIED™
MATERIALS	RoHS
SAFETY	CB Scheme, IEC 60950-1
EMISSIONS/IMMUNITY	CE, FCC Part 15 Class B

### WARRANTY

PRODUCT WARRANTY	3-year + Digi Foundations****
------------------	-------------------------------

\*\*\*The enclosure rating is self-declared and has not been formally verified by an independent lab

\*\*\*\*Digi Foundations can extend the standard three-year warranty to a Limited Lifetime Warranty that provides replacement with a new or similar Digi product for a period of five years from the date of purchase. After five years from the purchase date, the warranty value will revert to a 40 percent credit towards the MSRP of an equivalent product from Digi.

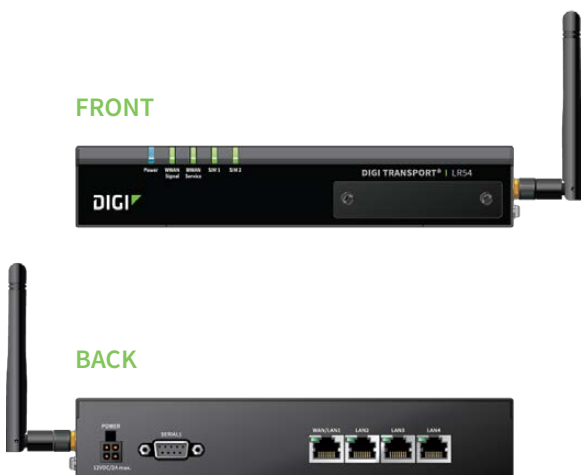
## ENTERPRISE SOFTWARE

## DESCRIPTION

MANAGEMENT PROTOCOLS	HTTPS, TLS1.0/1.1/1.2, SFTP, SCP,SNMP (v1/v2c/v3), SSHv2,CLI for web management; remote management via Digi Remote Manager; protocol analyzer, ability to capture PCAP for use with Wireshark, syslog support for streaming event and system logs
SECURITY/VPN	Stateful inspection firewall with scripting; VPN: IPsec with IKEv1; OpenVPN (32) VPN Tunnels; Cryptology: SHA-1/SHA256, RSA, DH Groups 5,14,15,16,17,18 ; Encryption: AES up to 256-bit; Ethernet Port Isolation; RADIUS
ROUTING/FAILOVER	NAT, NAPT with IP port forwarding; IP failover: automatic failover/failback to second GSM network/standby APN, IP port forwarding
OTHER PROTOCOLS	IPv4, IPv6, DHCP, GRE, DMNR, DSCP (QoS)

## PRODUCT IMAGES

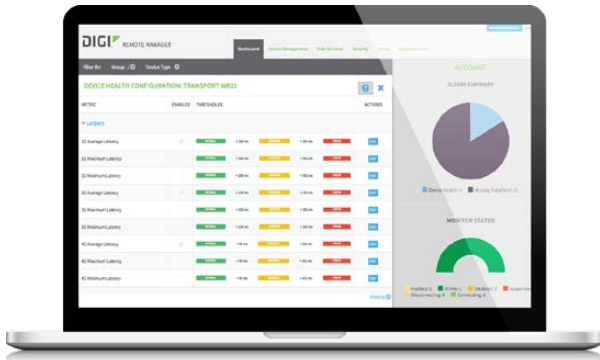
### DIGI TRANSPORT LR54



### DIGI TRANSPORT LR54 (WITH WI-FI)



## DIGI REMOTE MANAGER®



### INFRASTRUCTURE

- Hosted in a commercial-grade SAS 70-certified environment
- Superior availability, operating to 99.9% or greater
- Open APIs available to support application development

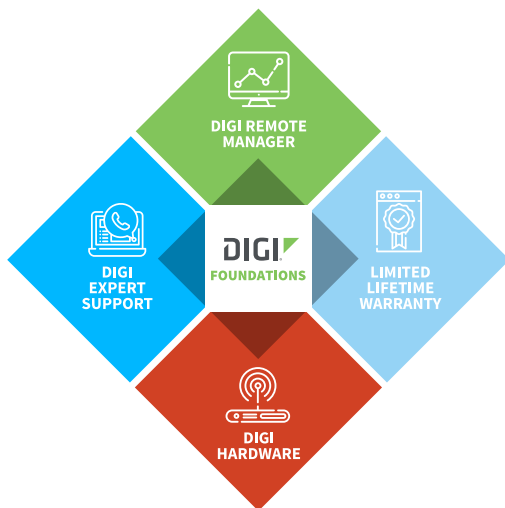
### CAPABILITIES

- Centralized management of remote devices over 3G/4G LTE
- Define standard configurations and automatically monitor individual devices for PCI security compliance
- Report and alert on performance statistics, including connection history, signal quality, latency, data usage and packet loss
- No servers or applications to operate and maintain
- Complete tasks for your entire device network in minutes
- Edit configurations and update firmware for your individual devices or groups
- Monitor the status and location of your remote device via a web browser
- Active or deactivate cellular lines and monitor data to ensure you never incur overage charges

### SECURITY

- Certified SSAE-16 facilities
- Member of the Cloud Security Alliance
- Over 175 security controls in place to protect your data
- Enables compliance with security frameworks like PCI, HIPAA, NIST and more
- Earned SkyHigh's Cloud Trust Program highest ranking of Enterprise-Ready

## DIGI FOUNDATIONS™



### IT'S TIME TO CONNECT WITH CONFIDENCE

The convenient, comprehensive and secure way to integrate IoT communications hardware, device management software, global support and lifetime warranty protection into a connectivity solution to simplify your IoT network growth.

- [Digi Remote Manager®](#) (DRM) gives you a single point of contact, command and control with sophisticated remote device monitoring and management tools.
- [Digi Expert Support](#) is available around the clock, seven days a week, around the world with experts ready to provide technical support by phone, email or online.
- [Digi Limited Lifetime Warranty](#) lowers the total cost of ownership with hardware protection and equipment upgrades to expand your network as needs evolve.

Digi Foundations, with DRM, simplifies network and device management – for hundreds or hundreds-of-thousands of Digi or third-party devices – with options to upgrade as technology evolves. Isn't it time you got better connected?

For more information visit: [digi.com/foundations](https://digi.com/foundations)

PART NUMBERS	DIGI TRANSPORT LR54
LR54-AA401	Digi TransPort LR54 - 4G LTE North America/EMEA, No Wi-Fi
LR54-AW401	Digi TransPort LR54 - 4G LTE North America/EMEA, Wi-Fi
LR54-AA403	Digi TransPort LR54 - 4G LTE North America/EMEA, No Wi-Fi, FIPS 140-2
LR54-AW403	Digi TransPort LR54 - 4G LTE North America/EMEA, Wi-Fi, FIPS 140-2

DIGI FOUNDATIONS™	AVAILABLE FOR DIGI TRANSPORT LR54
DGF-BDL-STAN-1YR	Digi Foundations add-on, 1 year, includes Expert Support, Digi Remote Manager, and Limited Lifetime Warranty
DGF-BDL-STAN-3YR	Digi Foundations add-on, 3 years, includes Expert Support, Digi Remote Manager, and Limited Lifetime Warranty
DGF-BDL-STAN-5YR	Digi Foundations add-on, 5 years, includes Expert Support, Digi Remote Manager, and Limited Lifetime Warranty

PART NUMBERS	ACCESSORIES
7800001	Mounting bracket - wall-mount

FOR MORE INFORMATION  
PLEASE VISIT [DIGI.COM](http://DIGI.COM)

**DIGI SERVICE AND SUPPORT** / You can purchase with confidence knowing that Digi is always available to serve you with expert technical support and our industry leading warranty. For detailed information visit [www.digi.com/support](http://www.digi.com/support).

© 1996-2019 Digi International Inc. All rights reserved.  
All trademarks are the property of their respective owners.

95003316  
B1/1019

**DIGI INTERNATIONAL WORLDWIDE HQ**  
877-912-3444 / 952-912-3444 / [www.digi.com](http://www.digi.com)

**DIGI INTERNATIONAL GERMANY**  
+49-89-540-428-0

**DIGI INTERNATIONAL JAPAN**  
+81-3-5428-0261 / [www.digi-intl.co.jp](http://www.digi-intl.co.jp)

**DIGI INTERNATIONAL SINGAPORE**  
+65-6213-5380

**DIGI INTERNATIONAL CHINA**  
+86-21-50492199 / [www.digi.com.cn](http://www.digi.com.cn)



Компания «Океан Электроники» предлагает заключение долгосрочных отношений при поставках импортных электронных компонентов на взаимовыгодных условиях!

Наши преимущества:

- Поставка оригинальных импортных электронных компонентов напрямую с производств Америки, Европы и Азии, а так же с крупнейших складов мира;
- Широкая линейка поставок активных и пассивных импортных электронных компонентов (более 30 млн. наименований);
- Поставка сложных, дефицитных, либо снятых с производства позиций;
- Оперативные сроки поставки под заказ (от 5 рабочих дней);
- Экспресс доставка в любую точку России;
- Помощь Конструкторского Отдела и консультации квалифицированных инженеров;
- Техническая поддержка проекта, помощь в подборе аналогов, поставка прототипов;
- Поставка электронных компонентов под контролем ВП;
- Система менеджмента качества сертифицирована по Международному стандарту ISO 9001;
- При необходимости вся продукция военного и аэрокосмического назначения проходит испытания и сертификацию в лаборатории (по согласованию с заказчиком);
- Поставка специализированных компонентов военного и аэрокосмического уровня качества (Xilinx, Altera, Analog Devices, Intersil, Interpoint, Microsemi, Actel, Aeroflex, Peregrine, VPT, Syfer, Eurofarad, Texas Instruments, MS Kennedy, Miteq, Cobham, E2V, MA-COM, Hittite, Mini-Circuits, General Dynamics и др.);

Компания «Океан Электроники» является официальным дистрибьютором и эксклюзивным представителем в России одного из крупнейших производителей разъемов военного и аэрокосмического назначения «JONHON», а так же официальным дистрибьютором и эксклюзивным представителем в России производителя высокотехнологичных и надежных решений для передачи СВЧ сигналов «FORSTAR».



## JONHON

«JONHON» (основан в 1970 г.)

Разъемы специального, военного и аэрокосмического назначения:

(Применяются в военной, авиационной, аэрокосмической, морской, железнодорожной, горно- и нефтедобывающей отраслях промышленности)

«FORSTAR» (основан в 1998 г.)

ВЧ соединители, коаксиальные кабели,  
кабельные сборки и микроволновые компоненты:

(Применяются в телекоммуникациях гражданского и специального назначения, в средствах связи, РЛС, а так же военной, авиационной и аэрокосмической отраслях промышленности).



Телефон: 8 (812) 309-75-97 (многоканальный)

Факс: 8 (812) 320-03-32

Электронная почта: [ocean@oceanchips.ru](mailto:ocean@oceanchips.ru)

Web: <http://oceanchips.ru/>

Адрес: 198099, г. Санкт-Петербург, ул. Калинина, д. 2, корп. 4, лит. А