

# MAX77818 EV System

## Dual Input, Power Path, 3A Switching Mode Charger with FG

### General Description

The MAX77818 evaluation system (EV system) consists of a MAX77818 evaluation kit (EV kit) and a companion Maxim MINIUSB interface board.

The MAX77818 EV kit is an assembled and tested PC board that demonstrates the MAX77818. The IC contains 12V input and 3A output switching mode charger.

The Maxim MINIUSB interface board allows an IBM-compatible PC to use its USB port to emulate an I<sup>2</sup>C 2-wire interface. Windows XP®/Windows® 7 software provides a user-friendly interface to exercise the features of the MAX77818. The menu-driven program offers a graphical user interface with control buttons.

### Applications

- Smartphones and Tablets
- Other Handheld Devices

### Benefits and Features

- Demonstrates 12V<sub>CHGIN</sub>, 3A Charge
- Demonstrates MG5 Fuel Gauge Performance
- Demonstrates Dual Input Charge
- Demonstrates OTG Mode
- Evaluates MAX77818 Detail Performances

Ordering Information appears at end of data sheet.

*Windows and Windows XP are registered trademarks of Microsoft Corp.*

### Required Equipment

- IBM PC-compatible computer capable of running Windows XP/Windows 7
- PC with an unused USB port
- Standard mini-USB cable to connect the computer's USB port to the Maxim MINIUSB interface board
- DC power supply capable of supplying 15.0V/3A

### Initial Test Setup

**Do not turn on the DC power supplies until all connections are made.**

- 1) Carefully connect the boards by aligning the 20-pin connector of the MAX77818 EV kit with the 20-pin header of the MINIUSB interface board. Gently press them together. The two boards should be flush against each other.
- 2) Connect a cable from the computer's USB port to the MINIUSB interface board. Use the USB cable that MAXIM provides.
- 3) Install the MAXIM MINIUSB driver when PC prompts USB device detection.
- 4) Connect a single cell Li-Ion battery to the pads labeled BATT+ and BATT-.
- 5) Connect the DC power supply capable of supplying 15V ±0.2V/3A to the pads labeled VBUS and GND on the MAX77818 EV board.
- 6) Turn on the 5V DC power supply.
- 7) Start the MAX77818 program by opening its icon in the **Start Menu**. The MAX77818.EXE software program can be run from the hard drive using Windows. If desired, use the INSTALL.EXE program to copy the files and create icons for them in the Windows XP/Window 7 Start Menu. An uninstall program is included with the software. Click on the UNINSTALL icon to remove the EV kit software from the hard drive.
- 8) Observe as the program automatically detects the address of the MAX77818 and starts the main program.



### Detailed Description of Software

The software provides an easy-to-use, point-and-click method to exercise all of the features of the MAX77818.

The voltages of the regulators are easily adjusted as well as toggled on or off. The Audio outputs can be adjusted or shut down. The software can control most of function blocks of the MAX77818.

### Main Display

The charger current, top-off current level, and all other charger related functions can be programmed in **Charger** section list boxes. All FG section parameters can be programmed in separate FG GUI.

### Simple 2-Wire Interface Commands

There are methods for communicating the MAX77818 through either the main display or the simple 2-wire interface commands available by using the **Advanced Tab and 2-Wire Interface** window. A display pops up to allow 2-wire interface protocols, such as read byte and write byte to be individually executed. When using the 2-wire interface general commands, uncheck **Device-Present Checking** to prevent any errors from occurring. The general command dialog boxes accept numeric data in binary, decimal, or hexadecimal. Hexadecimal numbers should be prefixed by \$ or 0x. Binary numbers must be exactly 8 bits.

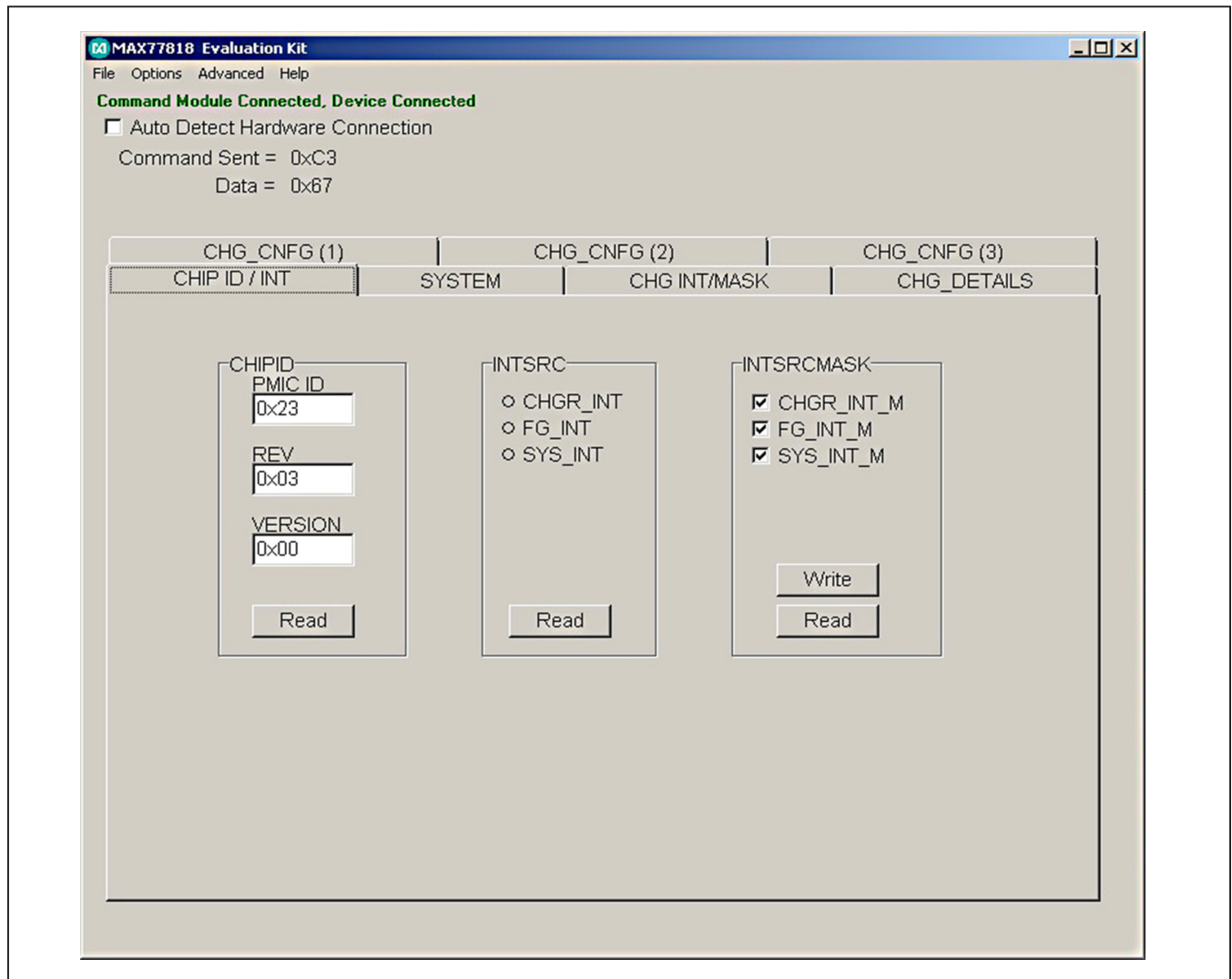


Figure 1. MAX77818 EV Kit GUI Screen

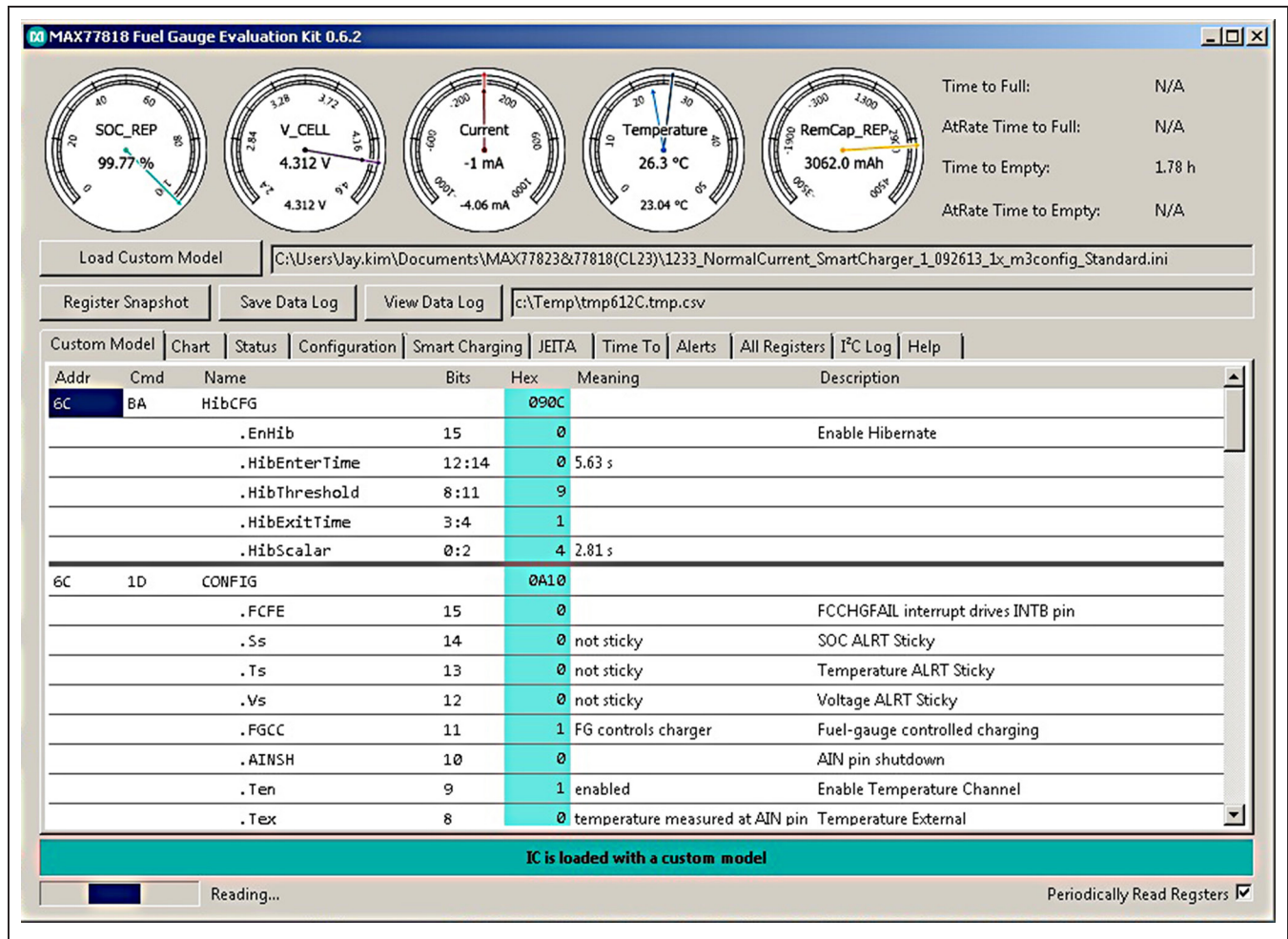


Figure 2. MAX77818 EV Kit Fuel Gauge GUI Screen

## Detailed Description of Hardware

### Battery Charger Test Setup

- 1) When using the DC power supply, adjust its voltage and current limit to 5.0V with 3.0A current limited.
- 2) Connect a single cell Li-Ion battery between BATT+ and BATT-.
- 3) Connect the 5.0V/3A current limited DC power supply between VBUS and GND.
- 4) Monitor the DC power supply current meter if the current reading is the same as the fast charge current that is set.

- 5) Open software screen and program the charger settings adequate to your system.
- 6) Use data log equipment to log charge current and VBATT profile while charging a fully discharged single cell Li+ battery.

Table 1. Jumper Settings

JUMPER NO.	DEFAULT POSITION	FUNCTION	PCB SILKSCREEN
JU8	Open between JU2: 1-2	VIO from external or VSYS	VIO

Fuel Gauge Test Setup

- 1) Close MAX77818 EV kit GUI. Fuel gauge uses a separate GUI.
- 2) Open FG section software screen and see if FG reads proper OCV and SOC while charging.
- 3) Open FG section software screen and see if FG reads proper OCV and SOC while discharging.

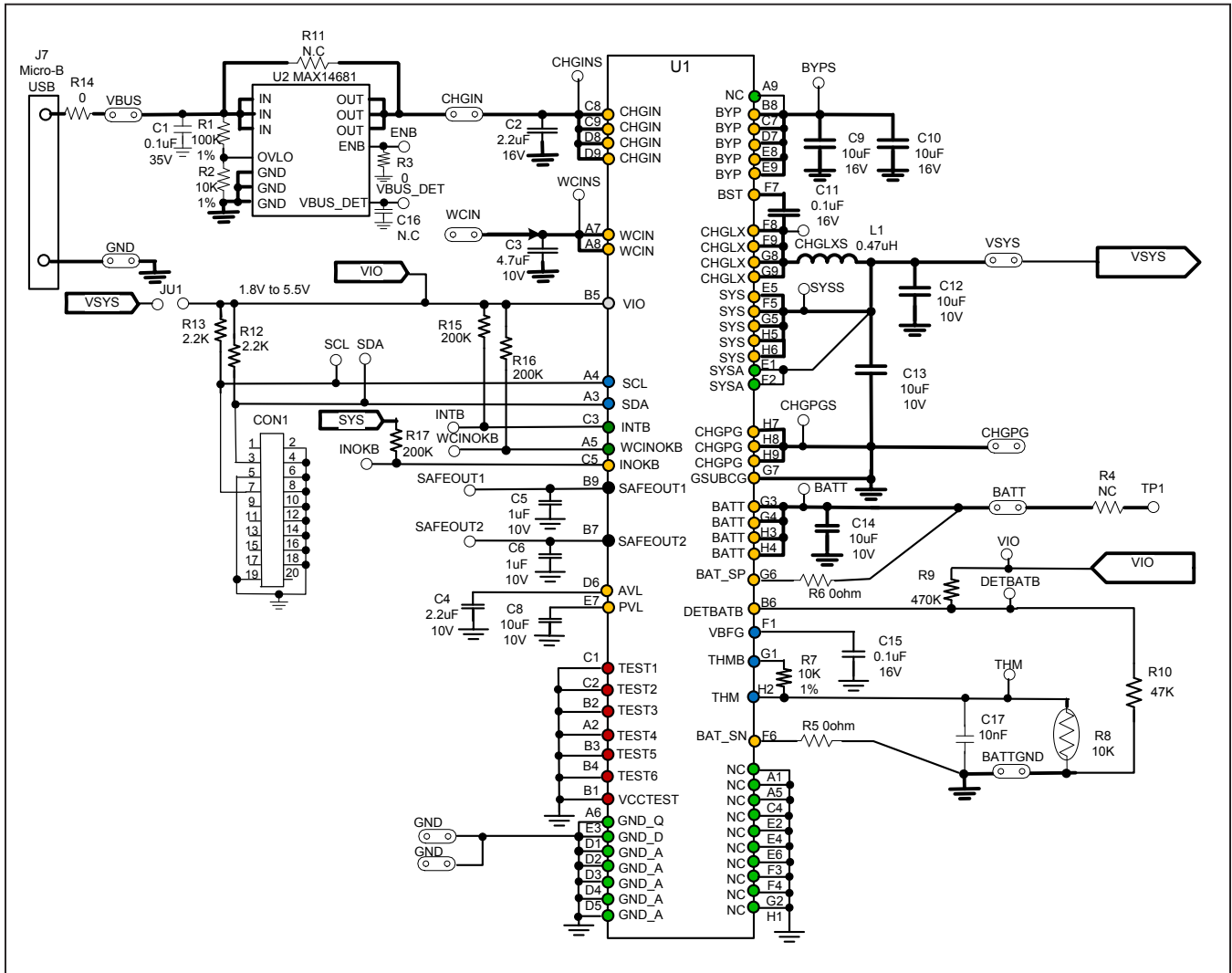


Figure 3. Schematic Diagram

## MAX77818 EV System Component List

PART	QTY	DESCRIPTION
MAX77818EVKIT	1	MAX77818 evaluation kit
MAXIM MINIQUSB	1	MINIQUSB interface board

## MAX77818 EV Kit Component List

DESIGNATION	QTY	DESCRIPTION
C1	1	0.1 $\mu$ F, 35V or 50V, 0402 ceramic capacitor Taiyo Yuden GMK105BJ104MV
C2, C4	2	2.2 $\mu$ F, 16V, 0603, ceramic capacitor Taiyo Yuden EMK107BJ225MA
C3	1	4.7 $\mu$ F, 10V, 0603, ceramic capacitor Taiyo Yuden LMK107BJ475MA
C5, C6	2	1 $\mu$ F, 10V, X5R, 0402, ceramic capacitor Taiyo Yuden LMK105BJ105MV
C8, C12–C14	4	10 $\mu$ F, 10V, X5R, 0603, ceramic capacitor Taiyo Yuden LMK107BBJ106MAL
C9, C10	2	10 $\mu$ F, 16V, X5R, 0603, ceramic capacitor Taiyo Yuden EMK107BBJ106MAL
C11, C15	2	0.1 $\mu$ F, 16V or higher, X5R, 0402, ceramic capacitor Taiyo Yuden EMK105BJ104MP
C16	1	N.C.
C17	1	10nF, 6.3V or higher, X5R, 0402 Taiyo Yuden TMK105BJ103MP
L1	1	0.47 $\mu$ H, 2016, TOKO DFE201610P-H-R47M 1 $\mu$ H, 2520, TOKO, DFE252012C 1239AS-H-1R0M
CON1	1	2x 10 right-angle female receptacle
VBUS, CHGIN, WCIN, VSYS, BATT, BATTGND, CHGPG, GND	11	MAXIM LOOP

DESIGNATION	QTY	DESCRIPTION
BYPS, ENB, VBUS_DET, SYSS, BATTs, SCL, SDA, INOKB, INTB, WCINOKB, SAFEOUT1, SAFEOUT2, TP1, CHGINS, WCINS, CHGPGS, CHGLXS, DETBATB, THM, VIO	20	Test point, small
R1	1	100k $\Omega$ , 1%, resistor, 0402
R2, R7	2	10k $\Omega$ , 1%, resistor, 0402
R3, R5, R6, R14	4	0 $\Omega$ , 0402
R12, R13	2	2.2k $\Omega$ , 5%, resistor, 0402
R15–R17	3	200k $\Omega$ , 5%, resistor, 0402
R9	1	470k $\Omega$ , 5%, resistor, 0402
R10	1	47k $\Omega$ , 5%, resistor, 0402
R4, R11	2	N.C.
U1	1	MAX77818EWZ+ 72-bump WLP, 0.4mm pitch
U2	1	MAX14681
THM	1	10 $\Omega$ , 1%, NTC, 0402
JU1	1	Two-pin header
JU2–JU11 (socket board only)	10	Two-pin header
J7	1	Micro B receptacle SMD type Panasonic, AXJ53312G

**Note:** All resistors are 0402 size.

PCB Layout Guide

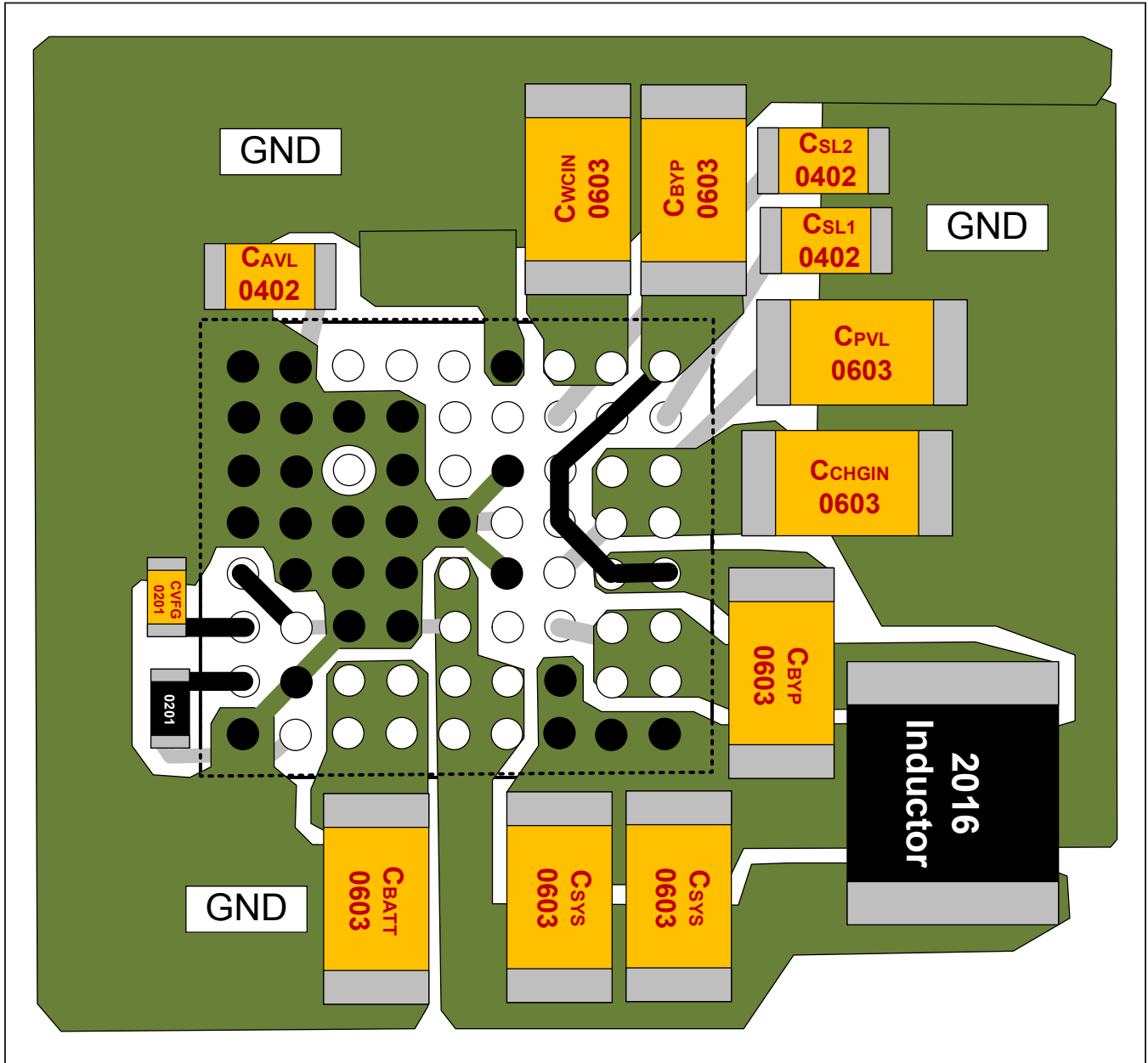


Figure 4. PCB Layout

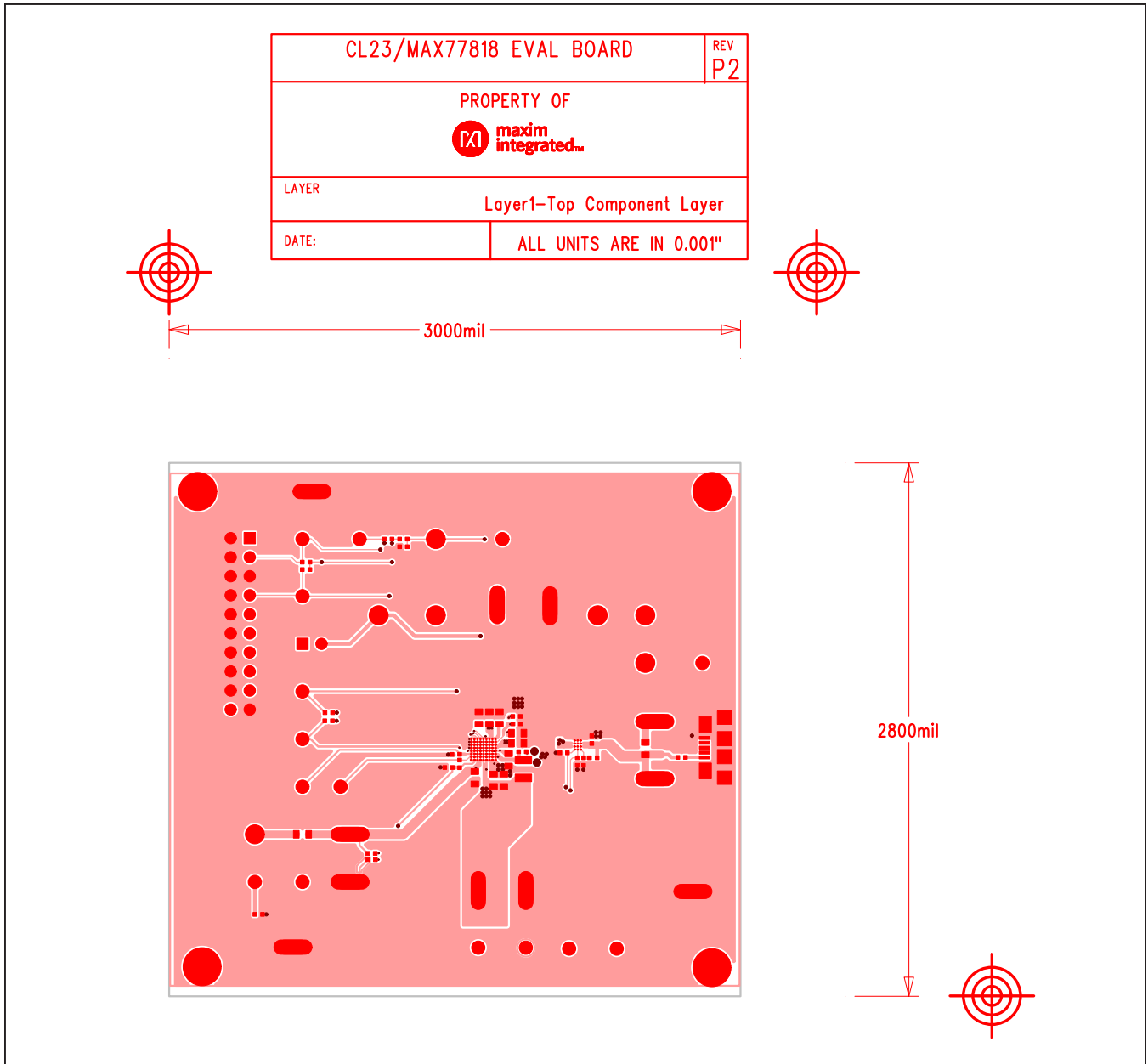


Figure 5. PCB Layout—Top Layer

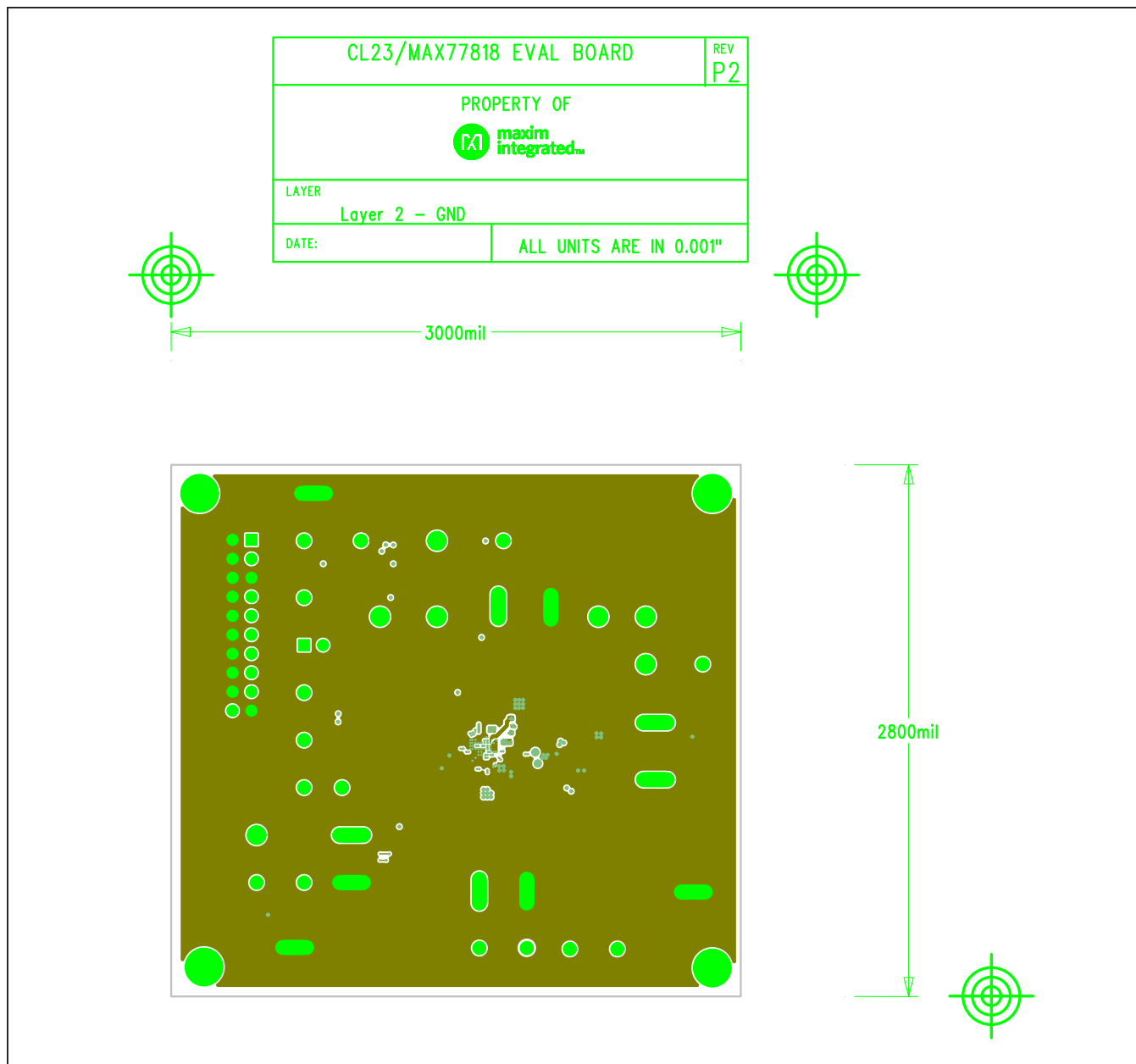


Figure 6. PCB Layout—Inner Layer 2



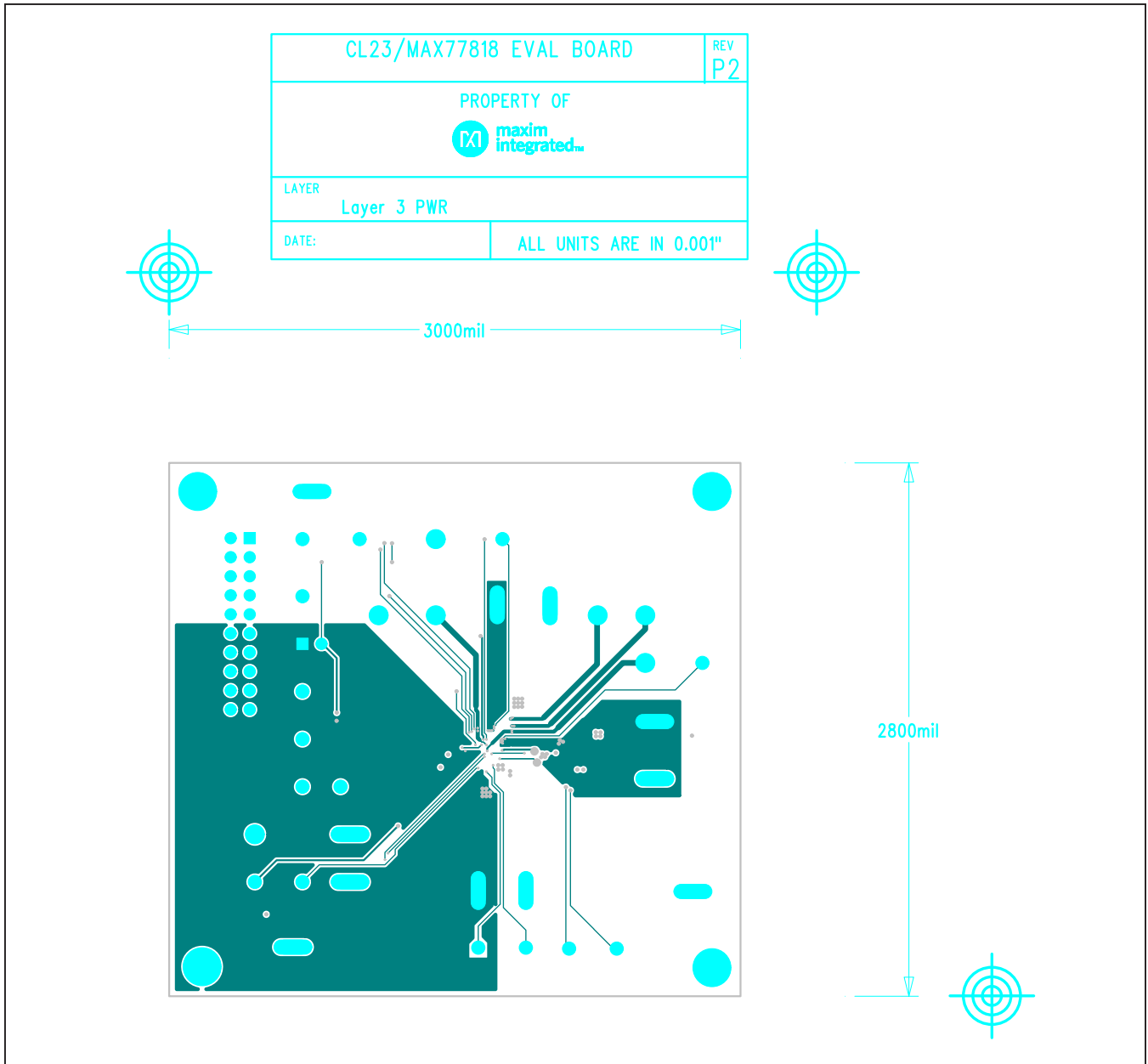


Figure 7. PCB Layout—Inner Layer 3

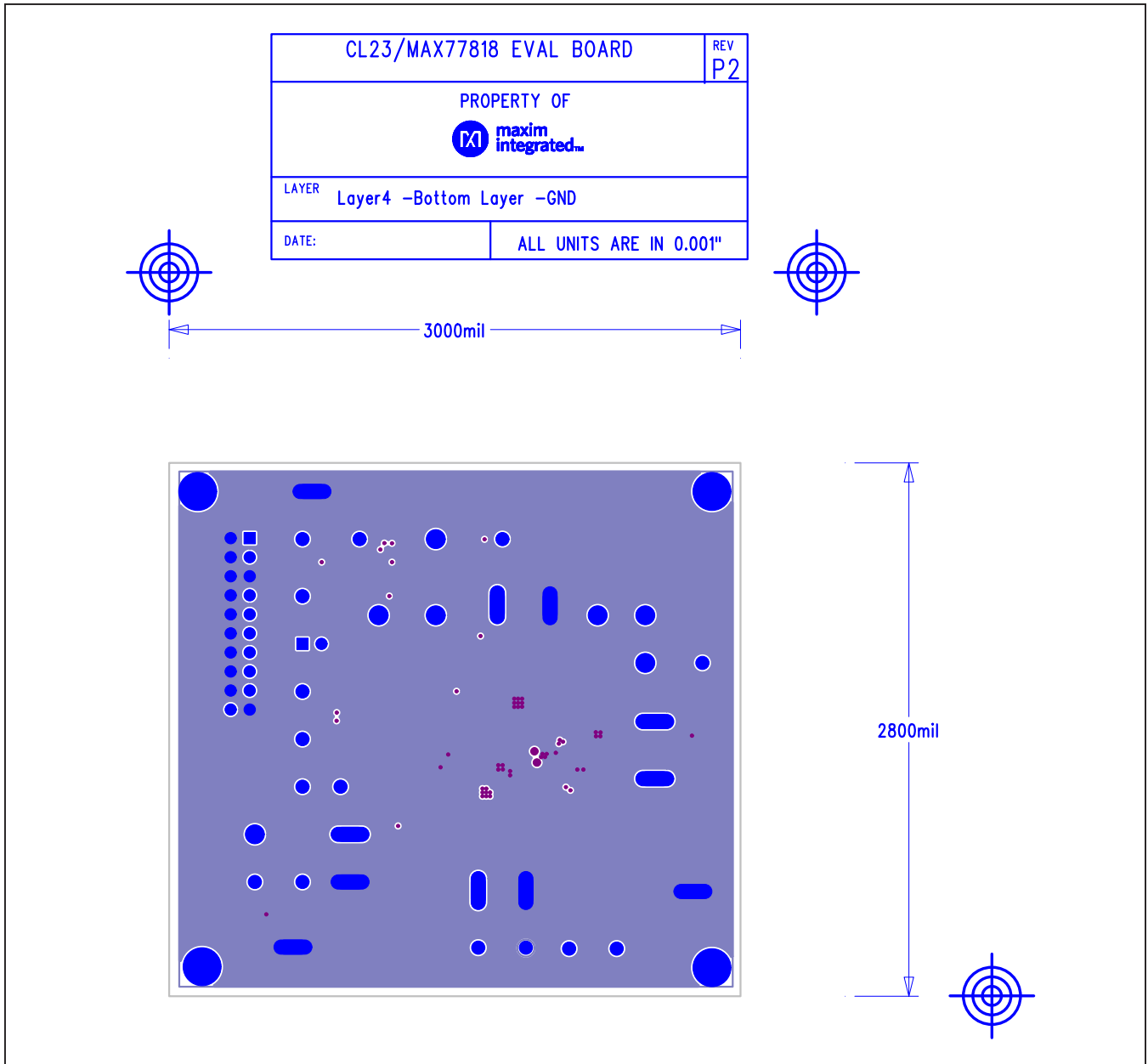


Figure 8. PCB Layout—Bottom Layer

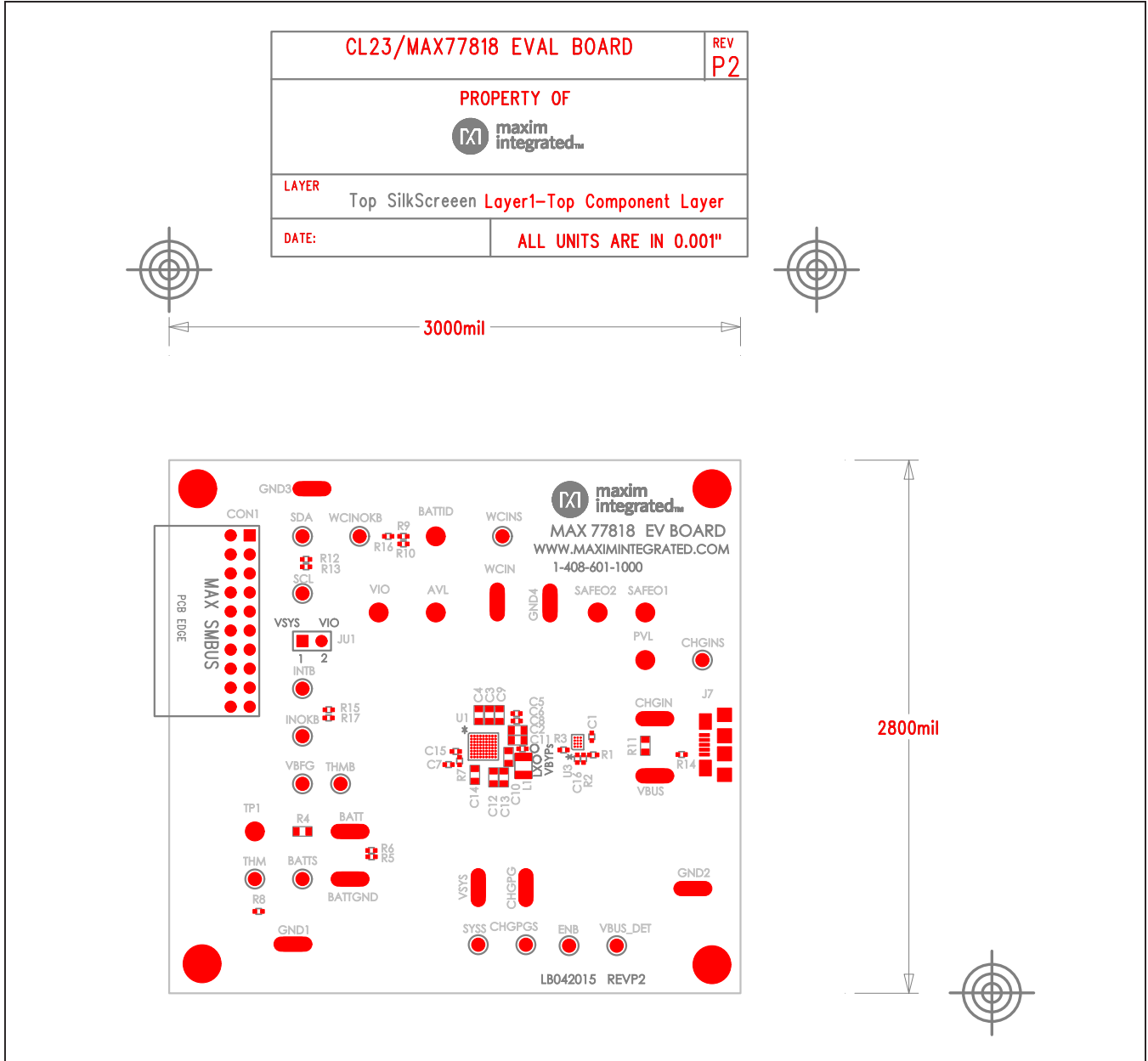


Figure 9. PCB Layout—Assembly Top

## Ordering Information

PART	MINIUSB INTERFACE TYPE
MAX77818EVKIT#	Not included
MAX77818EVSYS#	MINIUSB board

#Denotes RoHS compliant.

**Note:** The MAX77818 EV kit software is provided with the MAX77818 EV kit. However, the MAXIM MINIUSB board is required to interface the MAX77818 EV kit to the computer when using the software.

## Revision History

REVISION NUMBER	REVISION DATE	DESCRIPTION	PAGES CHANGED
0	6/15	Initial release	—

For pricing, delivery, and ordering information, please contact Maxim Direct at 1-888-629-4642, or visit Maxim Integrated's website at [www.maximintegrated.com](http://www.maximintegrated.com).

*Maxim Integrated cannot assume responsibility for use of any circuitry other than circuitry entirely embodied in a Maxim Integrated product. No circuit patent licenses are implied. Maxim Integrated reserves the right to change the circuitry and specifications without notice at any time.*

Компания «Океан Электроники» предлагает заключение долгосрочных отношений при поставках импортных электронных компонентов на взаимовыгодных условиях!

Наши преимущества:

- Поставка оригинальных импортных электронных компонентов напрямую с производств Америки, Европы и Азии, а так же с крупнейших складов мира;
- Широкая линейка поставок активных и пассивных импортных электронных компонентов (более 30 млн. наименований);
- Поставка сложных, дефицитных, либо снятых с производства позиций;
- Оперативные сроки поставки под заказ (от 5 рабочих дней);
- Экспресс доставка в любую точку России;
- Помощь Конструкторского Отдела и консультации квалифицированных инженеров;
- Техническая поддержка проекта, помощь в подборе аналогов, поставка прототипов;
- Поставка электронных компонентов под контролем ВП;
- Система менеджмента качества сертифицирована по Международному стандарту ISO 9001;
- При необходимости вся продукция военного и аэрокосмического назначения проходит испытания и сертификацию в лаборатории (по согласованию с заказчиком);
- Поставка специализированных компонентов военного и аэрокосмического уровня качества (Xilinx, Altera, Analog Devices, Intersil, Interpoint, Microsemi, Actel, Aeroflex, Peregrine, VPT, Syfer, Eurofarad, Texas Instruments, MS Kennedy, Miteq, Cobham, E2V, MA-COM, Hittite, Mini-Circuits, General Dynamics и др.);

Компания «Океан Электроники» является официальным дистрибьютором и эксклюзивным представителем в России одного из крупнейших производителей разъемов военного и аэрокосмического назначения «JONHON», а так же официальным дистрибьютором и эксклюзивным представителем в России производителя высокотехнологичных и надежных решений для передачи СВЧ сигналов «FORSTAR».



## JONHON

«JONHON» (основан в 1970 г.)

Разъемы специального, военного и аэрокосмического назначения:

(Применяются в военной, авиационной, аэрокосмической, морской, железнодорожной, горно- и нефтедобывающей отраслях промышленности)

«FORSTAR» (основан в 1998 г.)

ВЧ соединители, коаксиальные кабели, кабельные сборки и микроволновые компоненты:

(Применяются в телекоммуникациях гражданского и специального назначения, в средствах связи, РЛС, а так же военной, авиационной и аэрокосмической отраслях промышленности).



Телефон: 8 (812) 309-75-97 (многоканальный)

Факс: 8 (812) 320-03-32

Электронная почта: [ocean@oceanchips.ru](mailto:ocean@oceanchips.ru)

Web: <http://oceanchips.ru/>

Адрес: 198099, г. Санкт-Петербург, ул. Калинина, д. 2, корп. 4, лит. А