

High Efficiency, Dual-Output Synchronous Buck Converter with Very Low DCR Inductor

DESCRIPTION

Demonstration circuit 2000A is a high efficiency, high density, synchronous buck converter with a 4.5V to 14V input range. It can supply 30A maximum load current at a 1.0V output and at a 1.5V output separately. The demo board includes a LTC®3875EUJ controller. The LTC3875 is a feature-rich dual phase synchronous buck controller with very low DCR current sensing capability, on-chip drivers and remote output voltage sensing. This board is set up with a 0.32mΩ DCR inductor. The temperature compensation function can guarantee accurate current limit over a wide temperature range with DCR sensing.

The LTC3875 is suitable for inputs from 4.5V to 38V and outputs up to 3.5V. It can provide a high efficiency, high power density and versatile power solution for telecom and datacom systems, industrial and medical instruments, DC

power distribution systems and computer systems. The LTC3875 is available in a 40-pin 6mm × 6mm QFN package.

To shut down the converter, set the RUN1/RUN2 pin voltage below 1.2V (SW1: OFF; SW2: OFF). Use the JP1 jumper to select burst mode, pulse-skipping mode or forced continuous mode operation at light load. Switching frequency is pre-set at about 400kHz, and it can be easily modified from 250kHz to 770kHz. An on-board dynamic circuit is also available for the transient test. Please see the LTC3875 data sheet for more detailed information.

Design files for this circuit board are available at <http://www.linear.com/demo/DC2000A>

LT, LT, LTC, LTM, Linear Technology and the Linear logo are registered trademarks of Linear Technology Corporation. All other trademarks are the property of their respective owners.

PERFORMANCE SUMMARY Specifications are at T_A = 25°C

PARAMETER	CONDITIONS	VALUE
Input Voltage Range		4.5V to 14V
Output Voltage, V _{OUT1}	V _{IN} = 4.5V to 14V, I _{OUT1} = 0A to 30A	1.0V ±2%
Maximum Output Current, I _{OUT1}	V _{IN} = 4.5V to 14V, V _{OUT1} = 1.0V	30A
Typical Efficiency, V _{OUT1}	V _{IN} = 12V, V _{OUT1} = 1.0V, I _{OUT1} = 30A	86.9%
Output Voltage, V _{OUT2}	V _{IN} = 4.5V to 14V, I _{OUT2} = 0A to 30A	1.5V ±2%
Maximum Output Current, I _{OUT2}	V _{IN} = 4.5V to 14V, V _{OUT2} = 1.5V	30A
Typical Efficiency, V _{OUT2}	V _{IN} = 12V, V _{OUT2} = 1.5V, I _{OUT2} = 30A	89.6%
Typical Switching Frequency		400kHz

QUICK START PROCEDURE

Demonstration circuit 2000A is easy to set up to evaluate the performance of the LTC3875EUJ. Refer to Figure 1 for the proper measurement equipment setup and follow the procedure below:

1. With power off, connect the input power supply to V_{IN} (4.5V to 14V) and GND (input return).
2. Connect the 1.0V output load between V_{OUT1} and GND (Initial load: no load).
3. Connect the 1.5V output load between V_{OUT2} and GND (Initial load: no load).
4. Connect the DVMs to the input and outputs. Set default jumper position: JP1: CCM; SW1: ON; SW2: ON.
5. Turn on the input power supply and check for the proper output voltages. V_{OUT1} should be $1.0V \pm 2\%$. And V_{OUT2} should be $1.5V \pm 2\%$
6. Once the proper output voltages are established, adjust the loads within the operating range and observe the output voltage regulation, ripple voltage and other parameters.

Note: When measuring the output or input voltage ripple, do not use the long ground lead on the oscilloscope probe. See Figure 2 for the proper scope probe technique. Short, stiff leads need to be soldered to the (+) and (-) terminals of an output capacitor. The probe's ground ring needs to touch the (-) lead and the probe tip needs to touch the (+) lead.

QUICK START PROCEDURE

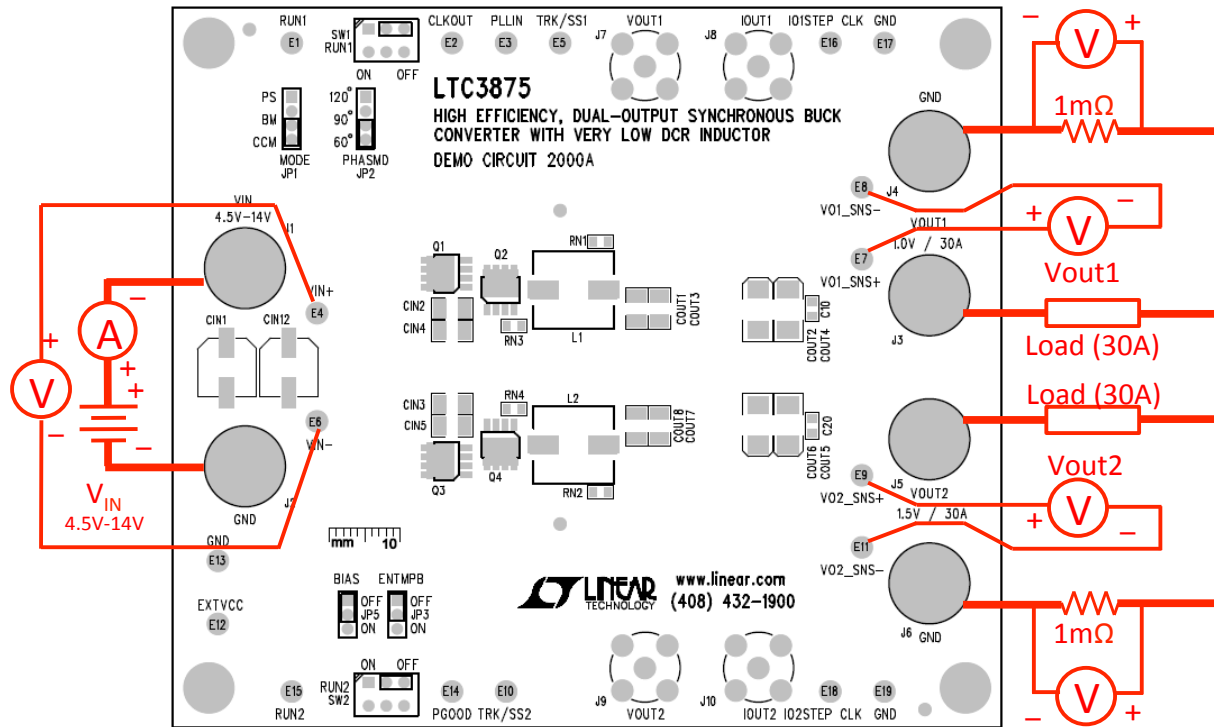


Figure 1. Proper Measurement Equipment Setup

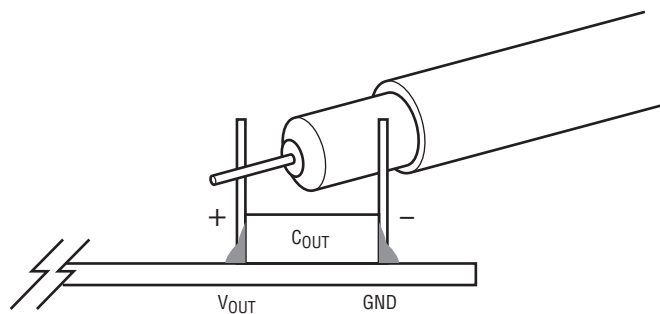


Figure 2. Measuring Output Voltage Ripple

QUICK START PROCEDURE

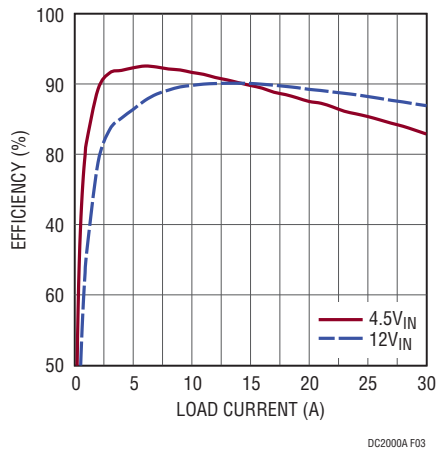


Figure 3. Efficiency vs Load Current at $V_{OUT1} = 1V$

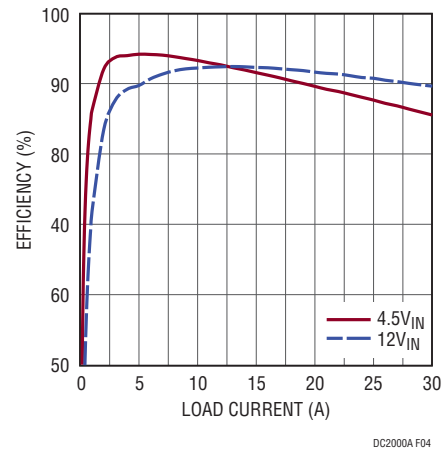


Figure 4. Efficiency vs Load Current at $V_{OUT2} = 1.5V$

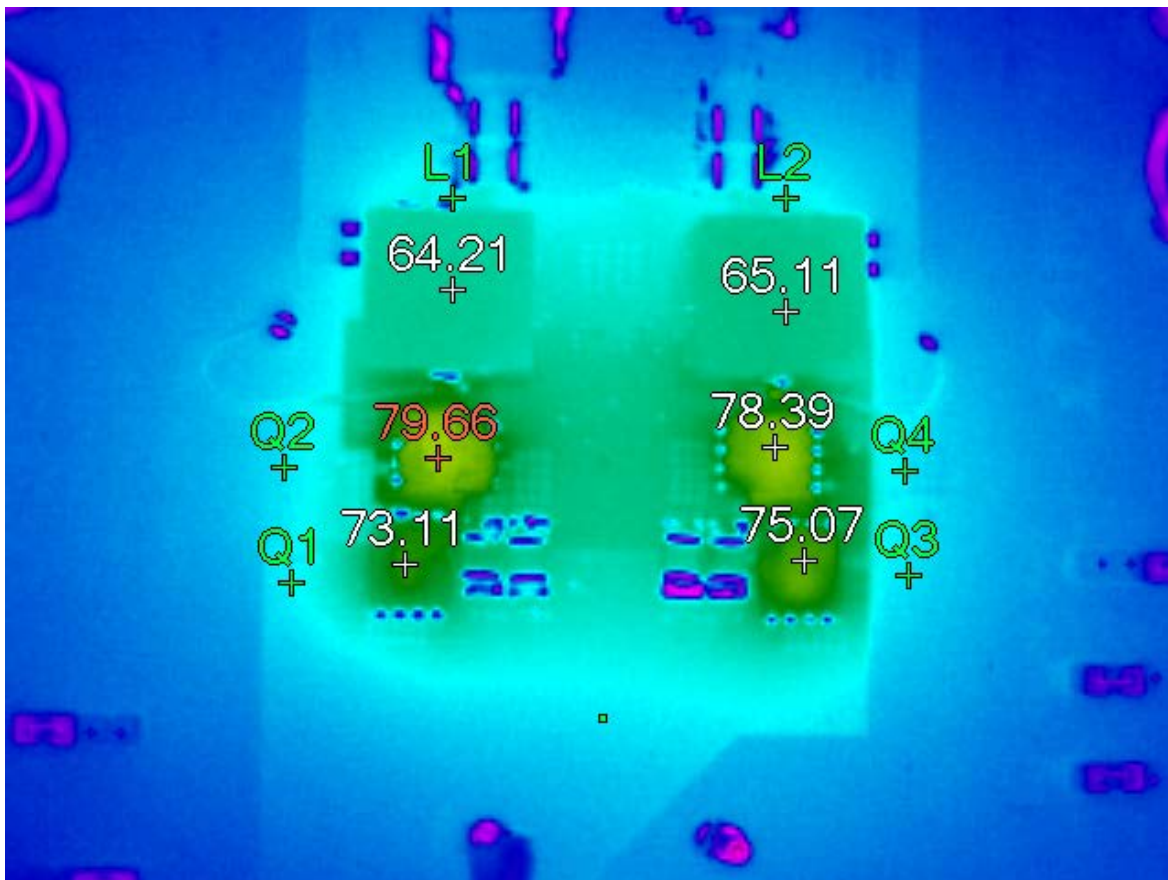


Figure 5. Thermal Performance at $V_{IN} = 12V$, $V_{OUT1} = 1V$, $I_{OUT1} = 30A$, $V_{OUT2} = 1.5V$, $I_{OUT2} = 30A$, No Forced Air

QUICK START PROCEDURE

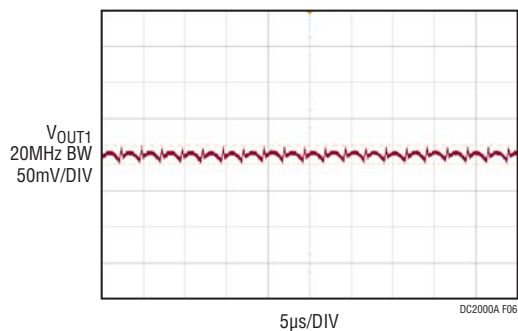


Figure 6. Output Voltage Ripple at $V_{IN} = 12V$, $V_{OUT1} = 1V$, $I_{OUT1} = 30A$

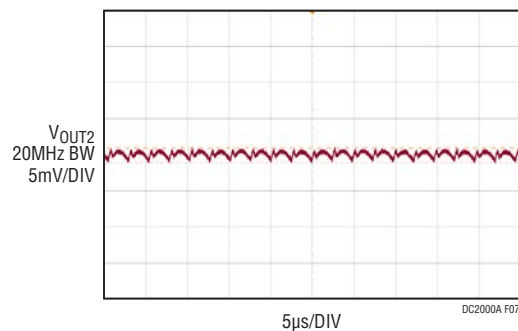


Figure 7. Output Voltage Ripple at $V_{IN} = 12V$, $V_{OUT2} = 1.5V$, $I_{OUT2} = 30A$

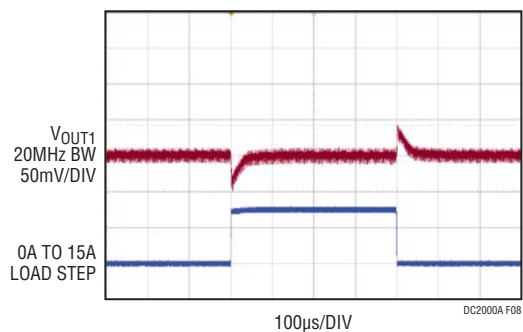


Figure 8. Transient Performance at $V_{IN} = 12V$, $V_{OUT1} = 1V$, $I_{OUT1} = 0A$ to $15A$

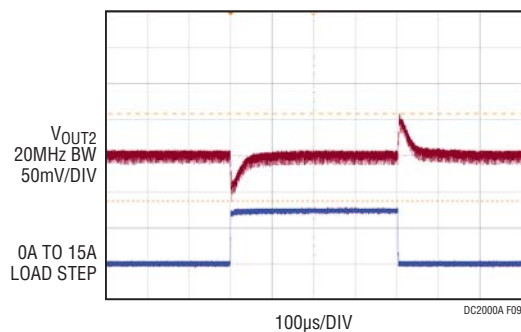


Figure 9. Transient Performance at $V_{IN} = 12V$, $V_{OUT2} = 1V$, $I_{OUT2} = 0A$ to $15A$

DEMO MANUAL DC2000A

PARTS LIST

ITEM	QTY	REFERENCE	PART DESCRIPTION	MANUFACTURER/PART NUMBER
Required Circuit Components				
1	1	CIN1	CAP., OS-CON, 270µF, 16V, 20%, E12	SANYO, 16SVPC270M
2	6	CIN2, CIN3, CIN4, CIN5, C27, C28	CAP., X5R, 10µF, 16V, 10%, 1210	
3	2	C10, C20	CAP., X5R, 10µF, 16V, 10%, 0805	
4	6	COUT1, COUT3, COUT7, COUT8, C29, C33	CAP., X5R, 100µF, 6.3V, 20%, 1210	
5	7	COUT2, COUT4, COUT5, COUT6, COUT9, COUT10, COUT11	CAP., OS-CON, 330µF, 16V, 20%, 7343	SANYO, 2R5TPE330M9
6	4	C2, C7, C18, C21	CAP., X5R, 0.1µF, 16V, 10%, 0603	
7	4	C3, C4, C16, C19	CAP., X5R, 220nF, 25V, 10%, 0603	
8	2	C8, C12	CAP., X5R, 1.5nF, 25V, 10%, 0603	
9	1	C9	CAP., X5R, 220pF, 25V, 10%, 0603	
10	1	C11	CAP., X5R, 150pF, 25V, 10%, 0603	
11	2	C13, C22	CAP., X5R, 1µF, 16V, 10%, 0603	
12	1	C14	CAP., X5R, 4.7µF, 16V, 10%, 0805	
13	4	C31, C32, C35, C36	CAP., X5R, 0.22µF, 16V, 10%, 0805	
14	2	D1, D2	DIODE, SCHOTTKY, SOD-323	CENTRAL CMDSH-3TR
15	1	L1	0.25µH	WÜRTH ELECT., 744301025
16	1	L2	0.33µH	WÜRTH ELECT., 744301033
17	2	Q1, Q3	OPTIMOS POWER-TRANSISTOR, PG-TDSON-8 25V	INFINEON, BSC050NE2LS
18	2	Q2, Q4	OPTIMOS POWER-TRANSISTOR, PG-TDSON-8 25V	INFINEON, BSC010NE2LSI
19	2	Q7, Q8	MOSFET SPEED SRS 30V 30A LPAK	RENESAS RJK0305DPB
20	3	R1, R14, R25	RES., CHIP, 20k, 1%, 0603	
21	4	R4, R17, R23, R26	RES., CHIP, 0Ω, 0603	
22	1	R9	RES., CHIP, 3.01k, 1%, 0603	
23	1	R10	RES., CHIP, 1k, 1%, 0603	
24	1	R11	RES., CHIP, 3.57k, 1%, 0603	
25	1	R12	RES., CHIP, 715Ω, 1%, 0603	
26	1	R13	RES., CHIP, 13.3k, 1%, 0603	
27	7	R19, R37, R40, R49, R52, R55, R57	RES., CHIP, 10k, 1%, 0603	
28	1	R15	RES., CHIP, 10.7k, 1%, 0603	
29	4	R16, R20, R24, R36	RES., CHIP, 10Ω, 1%, 0603	
30	1	R18	RES., CHIP, 2.2Ω, 1%, 0603	
31	1	R21	RES., CHIP, 30.1k, 1%, 0603	
32	1	R50	RES., CHIP, 34.8k, 1%, 0603	
33	2	R28, R32	RES., CHIP, 100k, 1%, 0603	
34	1	R34	RES., CHIP, 4.64k, 1%, 0603	
35	1	R35	RES., CHIP, 931Ω, 1%, 0603	
36	1	R43	RES., CHIP, 4.99k, 1%, 0603	
37	2	R56, R58	RES., CHIP, 0.005Ω, 1%, 2512	IRC., LRF2512-01-R005-F

PARTS LIST

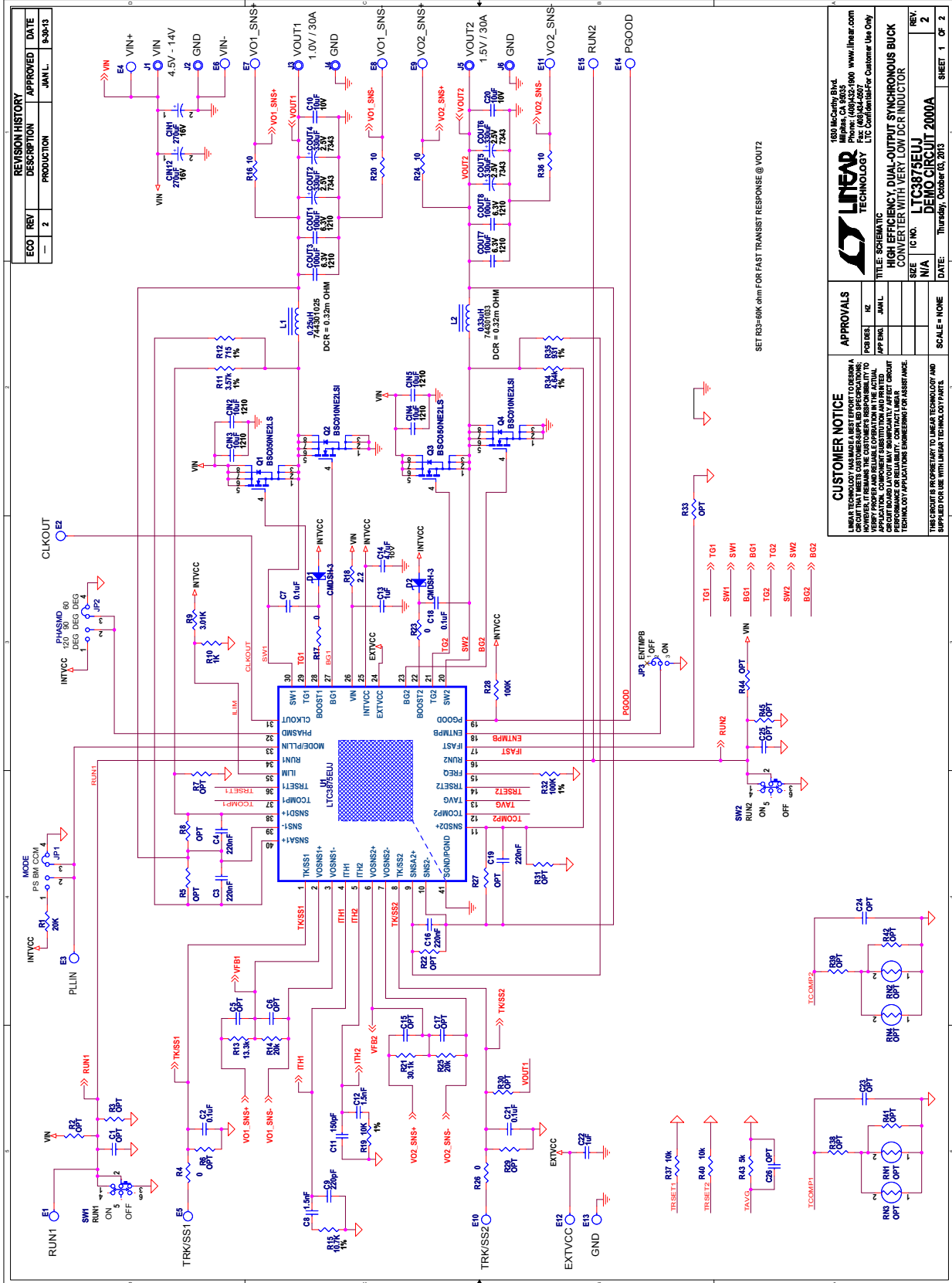
ITEM	QTY	REFERENCE	PART DESCRIPTION	MANUFACTURER/PART NUMBER
38	1	U1	IC, LTC3875EUJ, QFN 6mm × 6mm	LINEAR TECH., LTC3875EUJ#010J-1PBF
39	1	U2	IC, LT1761ES5-SD, TSOT-23	LINEAR TECH., LT1761ES5-SD

Additional Demo Board Circuit Components

1	0	C1, C5, CIN6, C6, CIN7, C30, C34, CIN8, CIN9, CIN10, CIN11, C15, C17, C23, C24, C25, C26, COUT12	CAP., OPTIONAL	
2	0	RN1-RN4, R2, R3, R5, R6, R7, R8, R22, R27, R29, R33, R30, R31, R38, R39, R41, R42, R44, R45, R46, R47, R48, R51, R53, R54	RES., OPTIONAL	
3	0	Q5, Q6, Q11, Q12	DUAL N-CHANNEL MOSFET 25V	FAIRCHILD FDMS3620S
4	0	Q9, Q10	DUAL N-CHANNEL MOSFET 25V	FAIRCHILD FDPC8011S

DEMO MANUAL DC2000A

SCHEMATIC DIAGRAM



SET R29=60k ohm FOR FAST TRANSIENT RESPONSE @ VOUT2

CUSTOMER NOTICE
 LINEAR TECHNOLOGY HAS MADE A BEST EFFORT TO DESIGN A BOARD THAT MEETS THE SPECIFICATIONS AND PERFORMANCE OF THE PARTS LISTED IN THE ACTUAL DEMO BOARD. THE BOARD IS NOT INTENDED FOR PRODUCTION OR RELIABLE USE. CONTACT YOUR LOCAL SALES REPRESENTATIVE FOR FURTHER INFORMATION.

APPROVALS

DESIGN	DATE
TEST	
APP	
DATE	

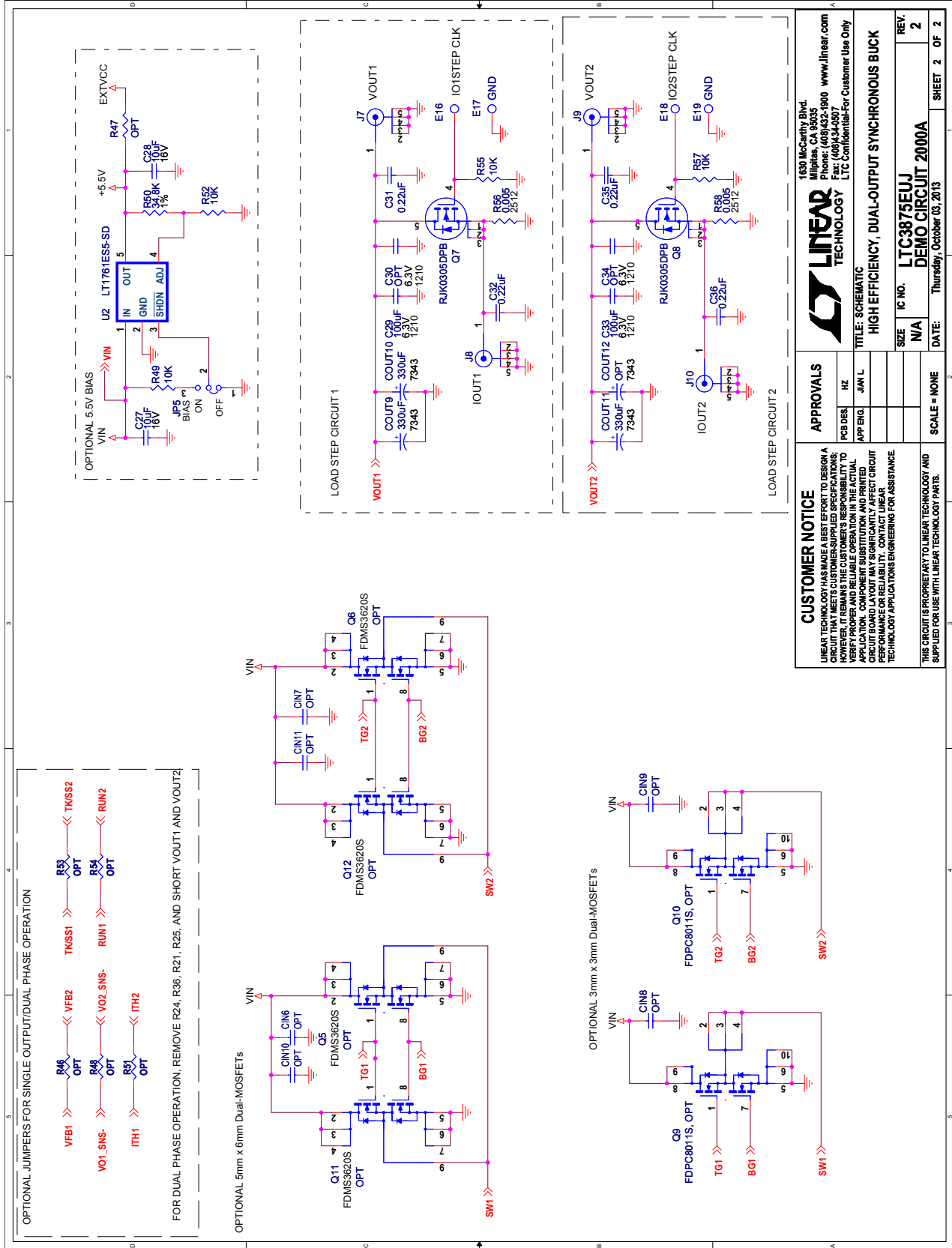
LINEAR TECHNOLOGY
 100 McCarty Blvd
 Phone: (408)432-1900 www.linear.com
 Fax: (408)432-6907
 LTC Confidential - For Customer Use Only

TITLE: SCHEMATIC
HIGH EFFICIENCY DUAL-OUTPUT SYNCHRONOUS BUCK CONVERTER WITH VERY LOW DCR INDUCTOR

SIZE: N/A
 IC NO.: LTC3875EU
 DEMO CIRCUIT 2000A

DATE: Thursday, October 10, 2013
 SHEET 1 OF 2

SCHEMATIC DIAGRAM



APPROVALS		CUSTOMER NOTICE	
Pcb Des:	RZ	LINEAR TECHNOLOGY HAS MADE A BEST EFFORT TO DESIGN A CIRCUIT THAT MEETS CUSTOMER-SUPPLIED SPECIFICATIONS; HOWEVER, IT REMAINS THE CUSTOMER'S RESPONSIBILITY TO DESIGN, BUILD, TEST, AND VALIDATE THE CIRCUIT FOR THE INTENDED APPLICATION. COMPONENT SUBSTITUTION AND PRINTED CIRCUIT BOARD LAYOUT MAY SIGNIFICANTLY AFFECT CIRCUIT PERFORMANCE OR RELIABILITY. CONTACT LINEAR TECHNOLOGY APPLICATIONS ENGINEERING FOR ASSISTANCE.	
App Eng:	JAM/L	SIZE:	IC NO. N/A
SCALE = NONE		DATE:	Thursday, October 03, 2013
SHEET 2 OF 2		REV. 2	

LINEAR TECHNOLOGY
 1630 McCarthy Blvd.
 Milpitas, CA 95035
 Phone: (408)432-1900 www.linear.com
 Fax: (408)434-0907
 LTC Confidential-For Customer Use Only

TITLE: SCHEMATIC
HIGH EFFICIENCY, DUAL-OUTPUT SYNCHRONOUS BUCK
DEMO CIRCUIT 2000A

DEMO MANUAL DC2000A

DEMONSTRATION BOARD IMPORTANT NOTICE

Linear Technology Corporation (LTC) provides the enclosed product(s) under the following **AS IS** conditions:

This demonstration board (DEMO BOARD) kit being sold or provided by Linear Technology is intended for use for **ENGINEERING DEVELOPMENT OR EVALUATION PURPOSES ONLY** and is not provided by LTC for commercial use. As such, the DEMO BOARD herein may not be complete in terms of required design-, marketing-, and/or manufacturing-related protective considerations, including but not limited to product safety measures typically found in finished commercial goods. As a prototype, this product does not fall within the scope of the European Union directive on electromagnetic compatibility and therefore may or may not meet the technical requirements of the directive, or other regulations.

If this evaluation kit does not meet the specifications recited in the DEMO BOARD manual the kit may be returned within 30 days from the date of delivery for a full refund. **THE FOREGOING WARRANTY IS THE EXCLUSIVE WARRANTY MADE BY THE SELLER TO BUYER AND IS IN LIEU OF ALL OTHER WARRANTIES, EXPRESSED, IMPLIED, OR STATUTORY, INCLUDING ANY WARRANTY OF MERCHANTABILITY OR FITNESS FOR ANY PARTICULAR PURPOSE. EXCEPT TO THE EXTENT OF THIS INDEMNITY, NEITHER PARTY SHALL BE LIABLE TO THE OTHER FOR ANY INDIRECT, SPECIAL, INCIDENTAL, OR CONSEQUENTIAL DAMAGES.**

The user assumes all responsibility and liability for proper and safe handling of the goods. Further, the user releases LTC from all claims arising from the handling or use of the goods. Due to the open construction of the product, it is the user's responsibility to take any and all appropriate precautions with regard to electrostatic discharge. Also be aware that the products herein may not be regulatory compliant or agency certified (FCC, UL, CE, etc.).

No License is granted under any patent right or other intellectual property whatsoever. **LTC assumes no liability for applications assistance, customer product design, software performance, or infringement of patents or any other intellectual property rights of any kind.**

LTC currently services a variety of customers for products around the world, and therefore this transaction **is not exclusive**.

Please read the DEMO BOARD manual prior to handling the product. Persons handling this product must have electronics training and observe good laboratory practice standards. **Common sense is encouraged.**

This notice contains important safety information about temperatures and voltages. For further safety concerns, please contact a LTC application engineer.

Mailing Address:

Linear Technology
1630 McCarthy Blvd.
Milpitas, CA 95035

Copyright © 2004, Linear Technology Corporation

Компания «Океан Электроники» предлагает заключение долгосрочных отношений при поставках импортных электронных компонентов на взаимовыгодных условиях!

Наши преимущества:

- Поставка оригинальных импортных электронных компонентов напрямую с производств Америки, Европы и Азии, а так же с крупнейших складов мира;
- Широкая линейка поставок активных и пассивных импортных электронных компонентов (более 30 млн. наименований);
- Поставка сложных, дефицитных, либо снятых с производства позиций;
- Оперативные сроки поставки под заказ (от 5 рабочих дней);
- Экспресс доставка в любую точку России;
- Помощь Конструкторского Отдела и консультации квалифицированных инженеров;
- Техническая поддержка проекта, помощь в подборе аналогов, поставка прототипов;
- Поставка электронных компонентов под контролем ВП;
- Система менеджмента качества сертифицирована по Международному стандарту ISO 9001;
- При необходимости вся продукция военного и аэрокосмического назначения проходит испытания и сертификацию в лаборатории (по согласованию с заказчиком);
- Поставка специализированных компонентов военного и аэрокосмического уровня качества (Xilinx, Altera, Analog Devices, Intersil, Interpoint, Microsemi, Actel, Aeroflex, Peregrine, VPT, Syfer, Eurofarad, Texas Instruments, MS Kennedy, Miteq, Cobham, E2V, MA-COM, Hittite, Mini-Circuits, General Dynamics и др.);

Компания «Океан Электроники» является официальным дистрибьютором и эксклюзивным представителем в России одного из крупнейших производителей разъемов военного и аэрокосмического назначения «**JONHON**», а так же официальным дистрибьютором и эксклюзивным представителем в России производителя высокотехнологичных и надежных решений для передачи СВЧ сигналов «**FORSTAR**».



JONHON

«**JONHON**» (основан в 1970 г.)

Разъемы специального, военного и аэрокосмического назначения:

(Применяются в военной, авиационной, аэрокосмической, морской, железнодорожной, горно- и нефтедобывающей отраслях промышленности)

«**FORSTAR**» (основан в 1998 г.)

ВЧ соединители, коаксиальные кабели, кабельные сборки и микроволновые компоненты:

(Применяются в телекоммуникациях гражданского и специального назначения, в средствах связи, РЛС, а так же военной, авиационной и аэрокосмической отраслях промышленности).



Телефон: 8 (812) 309-75-97 (многоканальный)

Факс: 8 (812) 320-03-32

Электронная почта: ocean@oceanchips.ru

Web: <http://oceanchips.ru/>

Адрес: 198099, г. Санкт-Петербург, ул. Калинина, д. 2, корп. 4, лит. А