

HEDS-8949 & HEDS-8969

Alignment Kit for AEAT-9000 Encoders



User Manual



1. Introduction

Overview

This user manual describes the Avago HEDS-8949 and HEDS-8969 alignment kit. The kit features real-time IC monitoring the IC output during user alignment. The alignment kit consists of the IC interface hardware and Windows software. The IC interface hardware is a microcontroller system that connects the HEDS-8949 / HEDS-8969 encoder to the PC through a USB cable. This user manual includes hardware setup, software setup and software operating illustrations.

Features

- Bus-powered USB device
- Real-time monitoring of LocTest and TiltOut output
- Real-time monitoring A/B Incremental signal pairs or Sine/Cosine signal pairs.
- Real-time monitoring of SSI data.
- Data capturing rate at 4000 samples per second

Ordering Information

HEDS-8949 for AEAT-9000-1GSH0

HEDS-8969 for AEAT-9000-1GSH1 and AEAT-9035

2. Hardware Components

Unpacking the Unit

Figure 1 illustrates the typical packing of the HEDS-8949/ HEDS-8969 alignment kit.

The package includes:-

1. USB cable
2. Alignment module (HEDS-8949/8969)
3. Encoder cable (HEDS-8949/8969)
(24/30 pin for HEDS-8949, AEAT-9000-1GSH0)
or
(24/16 pin for HEDS-8969, AEAT-9000-1GSH1/AEAT-9035)
4. Installation CD



Figure 1. Inside the alignment kit box

Figures 2 and 3 show the various components provided in the alignment kits.

The USB cable (1) connects to the USB port of the alignment kit (2).



Figure 2. Alignment kit components for HEDS-8949



Figure 3. Alignment kit components for HEDS-8969

Figures 4 and 5 show the HEDS-8949/ HEDS-8969 alignment modules.



Figure 4. Alignment module top cover for HEDS-8949



Figure 5. Alignment module top cover for HEDS-8969

Connect the alignment kit to your PC using the provided USB cable. When the alignment module is powered-up the red LED will illuminate. The green LED will blink when there is communication between the PC and encoder.

The kit's current consumption is less than 200 mA. The kit includes a 100 mA current limiting circuit for the encoder. If the current consumption for the alignment kit exceeds 100 mA, the programmer will cut off the supply to the encoder.

On the left side of the programmer is the programming connector, which is a 24-pin (2 x 12) rectangular header. This connector is used to connect a cable harness to the encoder. Figure 6 shows the encoder cable and connectors.

The programming connector pin names and function are described in Table 1 (shown on next page).

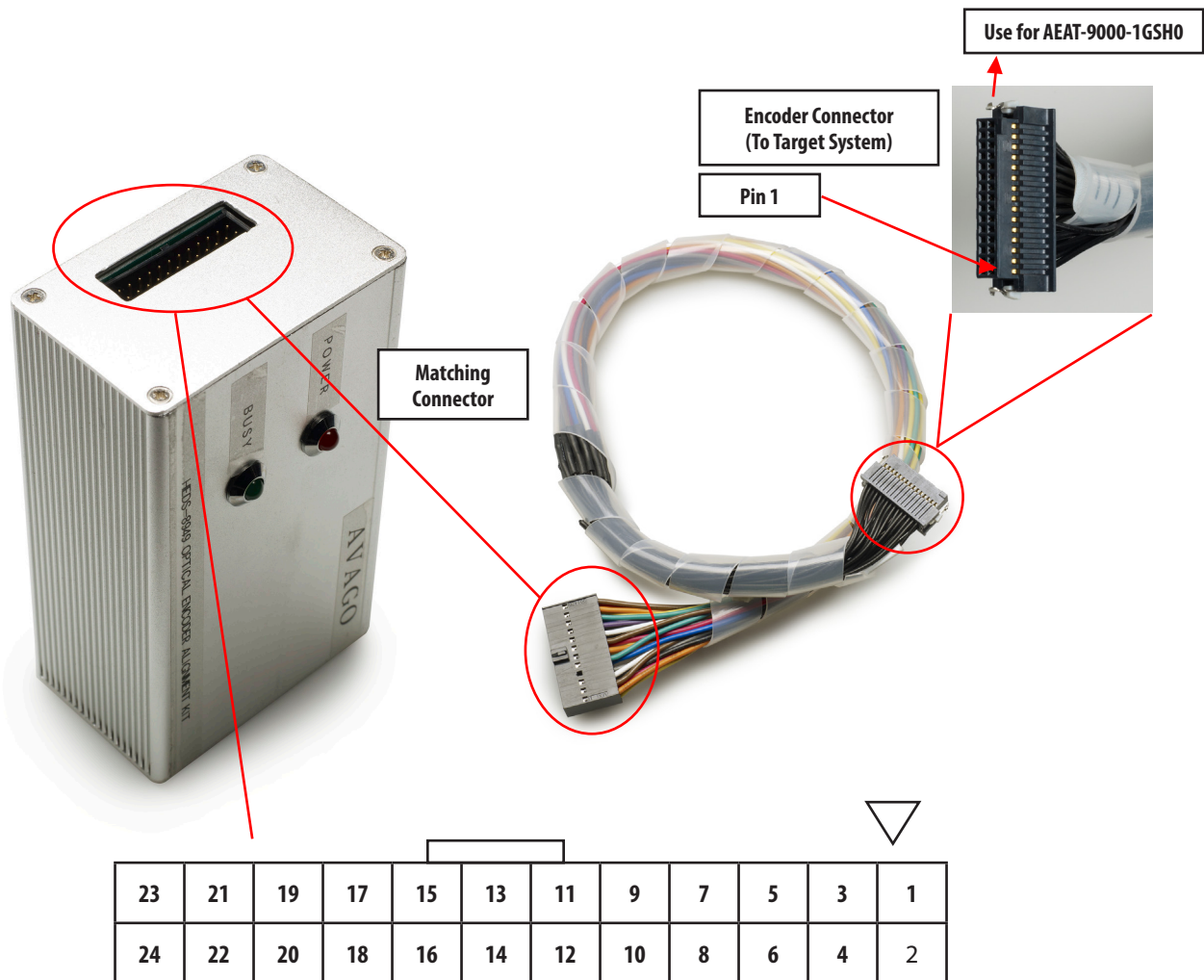


Figure 6. Encoder cable and connectors: 24-way cable for connecting the encoder IC of the target system

The encoder cables are shown below in figures 7a and 7b.

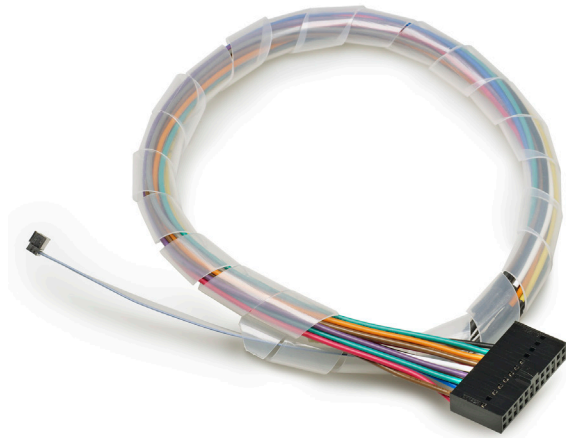


Figure 7a. Encoder cable, HEDS-8969 (for AEAT-9000-1GSH1/AEAT-9035)

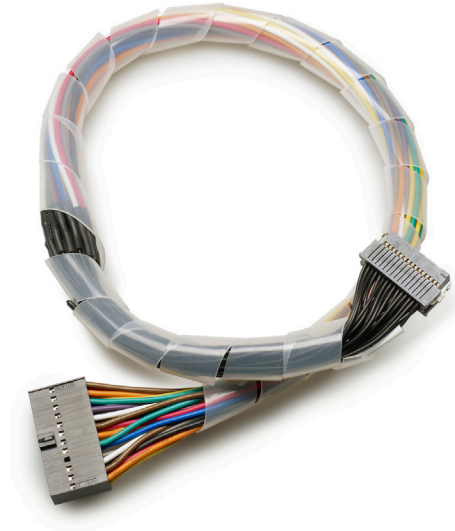


Figure 7b. Encoder cable, HEDS-8949 (for AEAT-9000-1GSH0)

Table 1. Programming connector pin descriptions

PIN	Name	Function
PIN 1	INCA	Incremental A Input
PIN 2	INCB	Incremental B Input
PIN 3		
PIN 4		
PIN 5	SCL+	SSI Shift Register Clock
PIN 6	SPI_SI	SPI Data Input
PIN 7	SPI_CLK	SPI Clock
PIN 8	NSL+	SSI Enable
PIN 9	LERR	Error pin
PIN 10	GND	IC Ground
PIN 11	Zero_RST	Zero Reset Input
PIN 12	DOUT	SSI Data Output
PIN 13	Vdd	IC supply
PIN 14	LocTest	Alignment Locate Signal
PIN 15	MSBINV	Inverted Counting Input
PIN 16		
PIN 17		
PIN 18	TiltOut	Tilt Alignment Output
PIN 19	DIN+	SSI Data Input
PIN 20	SPI_SO	SPI Data Output
PIN 21	Cosine+	Cosine+ Input
PIN 22	Sine+	Sine+ Input
PIN 23	Cosine-	Cosine- Input3
PIN 24	Sine-	Sine- Input4

3. Software Installation

The user manual and the programmer application software are on the installation CD. To install the application software, browse the installation CD using Explorer and double-click the 'Avago AEAT-9000 Alignment Kit' icon. The installation will run automatically. Figures 8, 9 and 10 illustrate the software installation process. Figure 5: Software installation start up screen. Click Next to start installation.

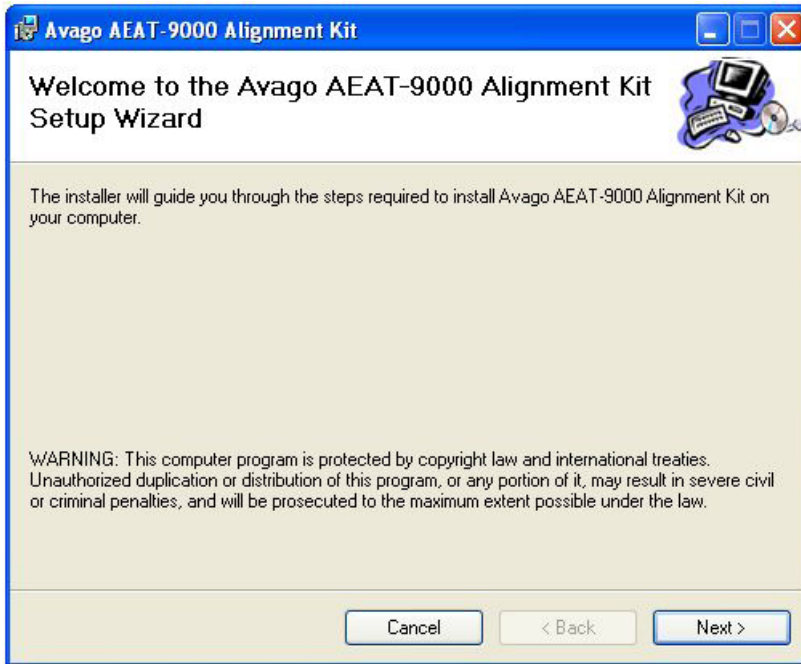


Figure 8. Software installation start up screen. Click Next to start installation.

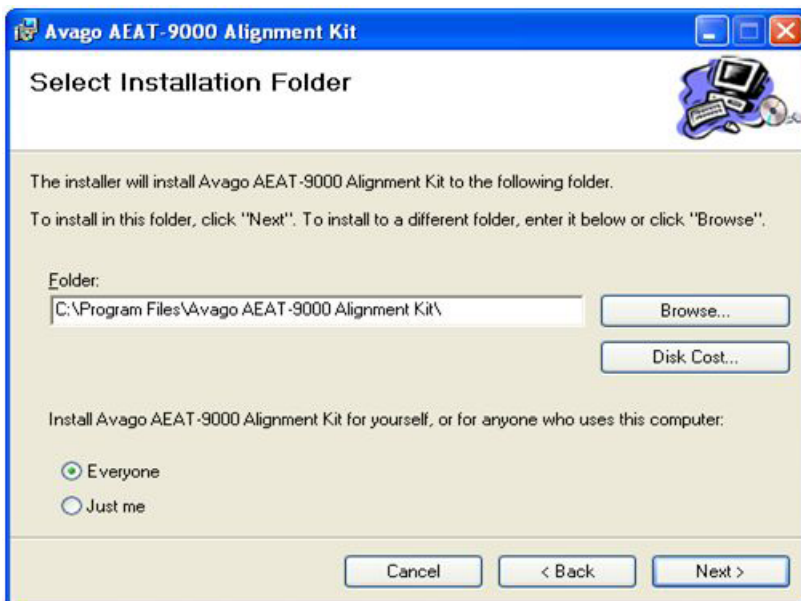


Figure 9. Installation folder selection screen. Specify the installation folder to change the default path. Click Next to continue.

The installation process will continue after the step shown in Figure 10, and finally, an "Installation Complete" screen will be shown.

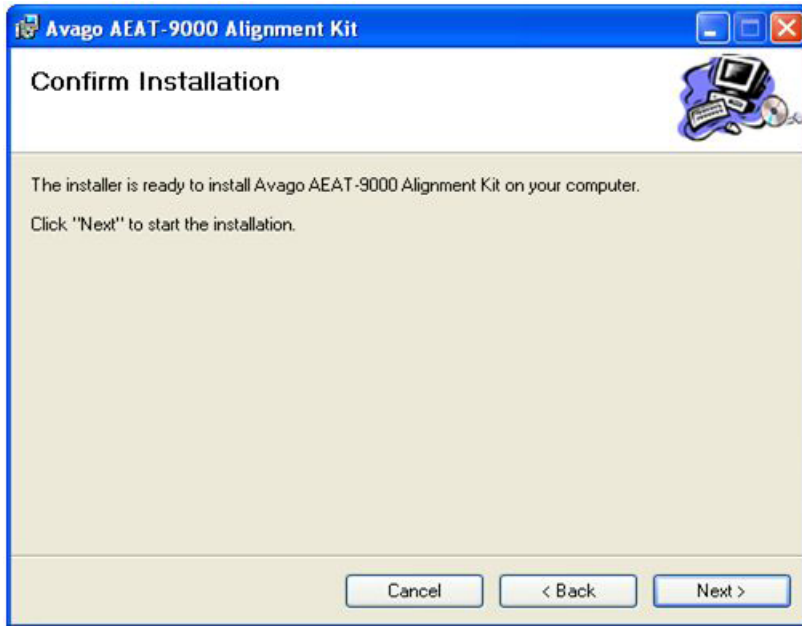


Figure 10. Click Next to confirm and start the installation.

Locate the software by selecting Start > All Program > Avago AEAT-9000 Alignment Kit > AEAT-9000 Alignment Kit to run the software.

To uninstall the software, open the Windows' Control Panel, run the "Add or Remove Program", and locate "Avago AEAT-9000 Alignment Kit". Click "Change/Remove" and follow the screen instructions to remove the software.

4. Software Application

4.1 Device Monitoring

To run the application software, click Start > All Program > Avago AEAT-9000 Alignment Kit > AEAT-9000 Alignment Kit. After selecting the software, the screen in Figure 11 will appear.

The software has two tabs: Device Monitoring and Alignment. Device Monitoring provides real-time display of encoder data, and Alignment provides the interface for aligning the code disc.

Figure 11 shows the main screen of the software. When the "Connect" button is clicked, the software will locate and connect to the alignment kit. Once connected, real-time SSI angular data will be streamed to the software and displayed as raw 17-bit SSI data as well as the converted mechanical degree position. This is illustrated in Figure 12.

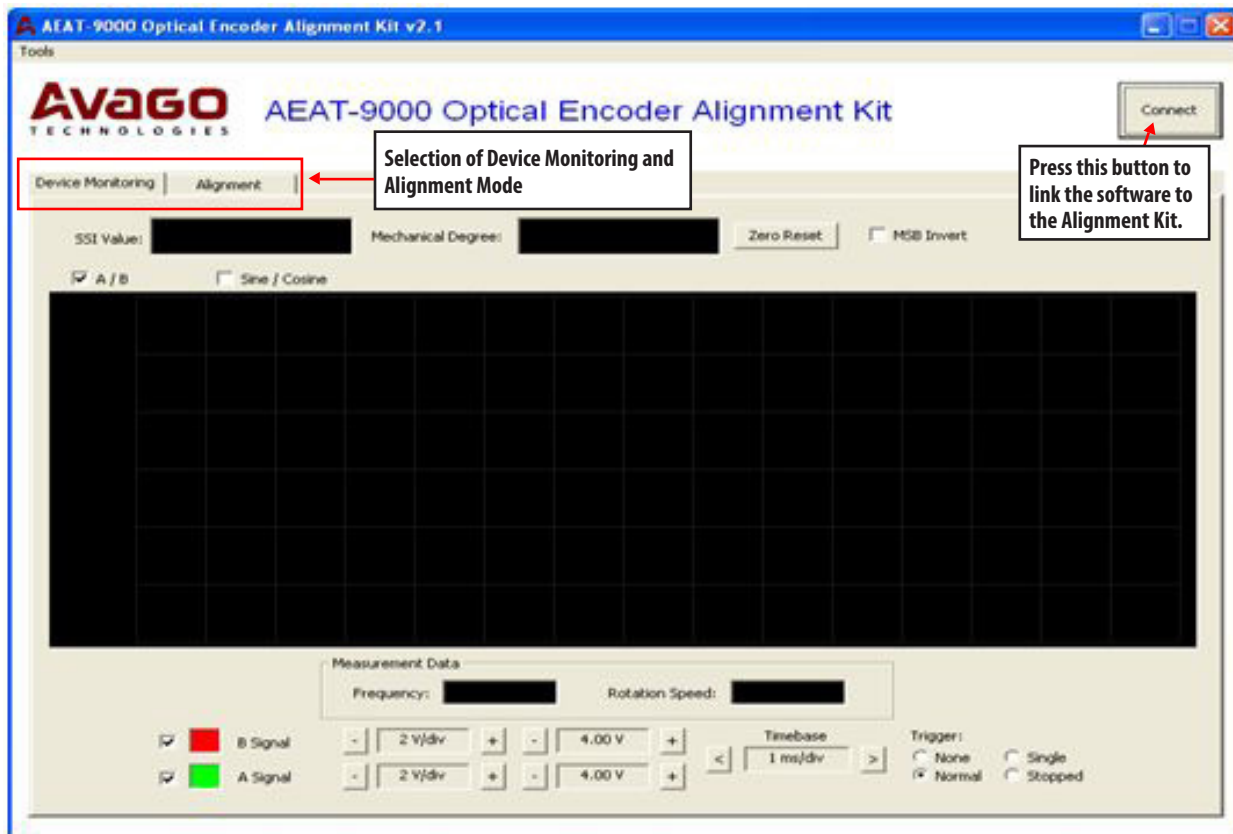


Figure 11. Optical encoder alignment main screen

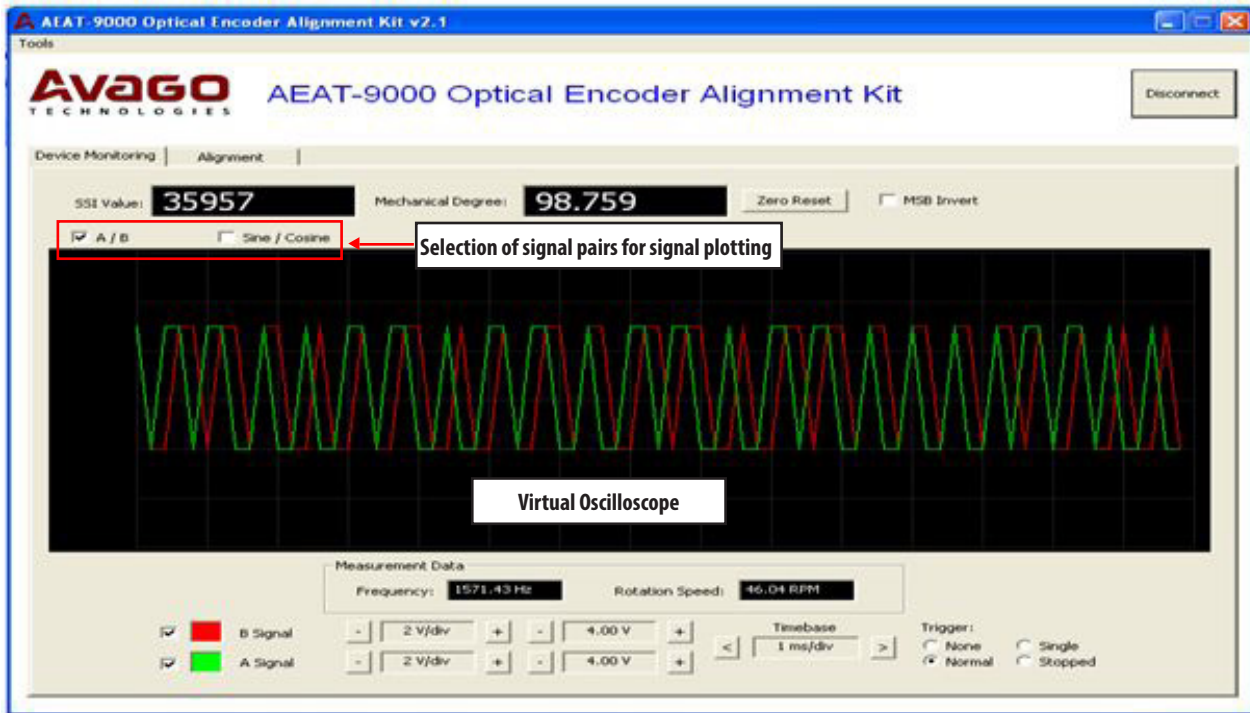


Figure 12. Device monitoring tab

The Zero Reset button allows the user to zero offset the encoder's position data. When clicked, the alignment kit will be commanded to send a short HIGH pulse of 10 ms to the Zero_RST pin of the encoder.

Check the 'MSB Invert' check box if inverted counting is required. When 'MSB Invert' is checked, the alignment kit will output a HIGH level on the "MSBINV" pin and vice versa.

The software contains a virtual oscilloscope for plotting real-time data. For display, the user can select between two signal pairs: incremental A/B signal pairs and Sine/Cosine signal pairs. Signals are sampled at a 4000 Hz rate and transferred to the software via the USB bus. The software calculates the frequency of the signal, and derives the encoder disc rotation speed in RPM (Rotation per Minute).

The timebase, volts per division and offset are set by the controls at the bottom of the screen shown in Figure 12. Four trigger modes are supported: None, Single, Normal and Stopped. The trigger source is fixed to the A signal for A/B incremental signal pairs and the sine signal for Sine/Cosine signal pairs.

4.2 Alignment Mode

The alignment mode provides an interface for monitoring the LocTest and TiltOut signals for aligning the code disc. Figure 13 shows the alignment mode screen.

The alignment mode measures and analyzes the LocTest and TiltOut signals and provides necessary alignment data to the user. The description of each alignment parameter is given in Table 2.

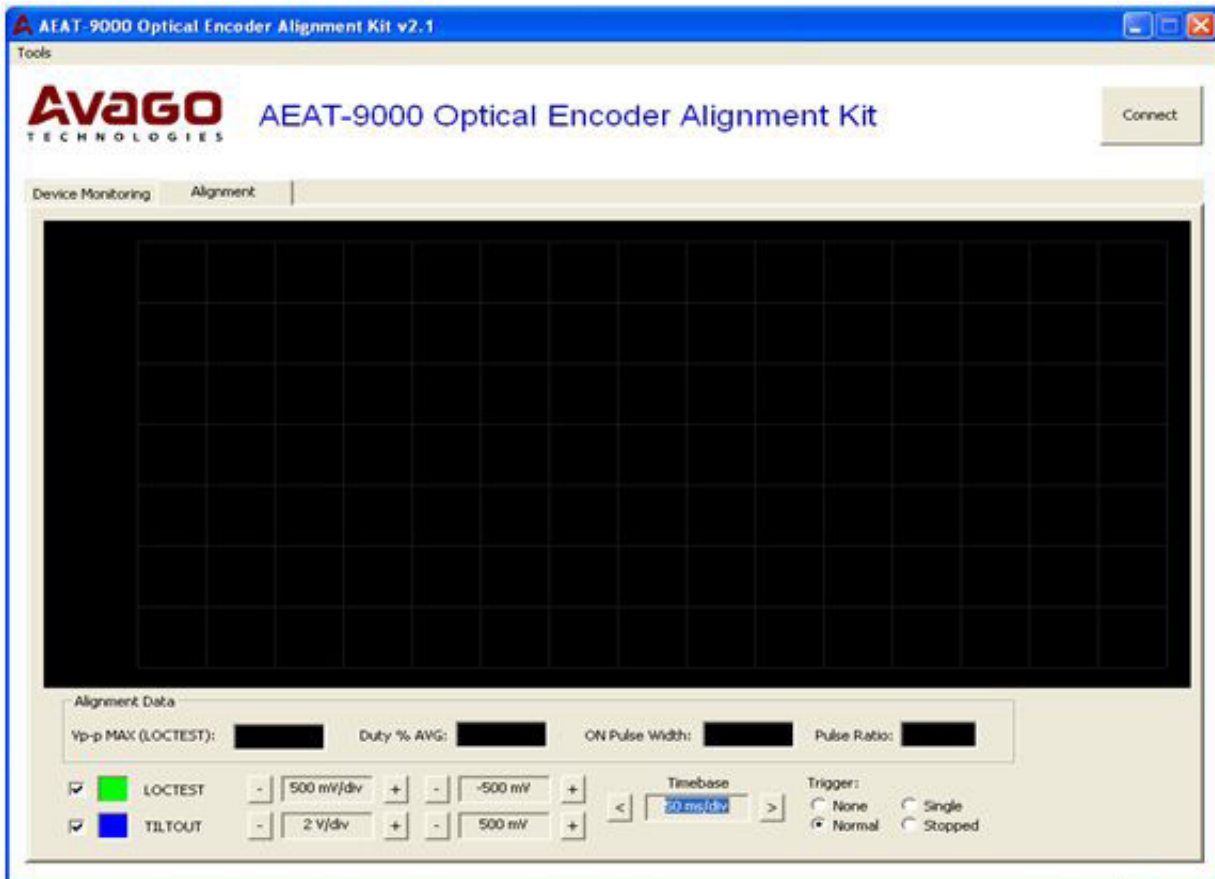
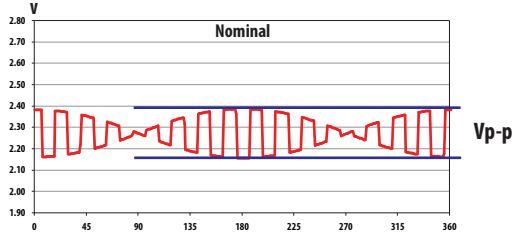
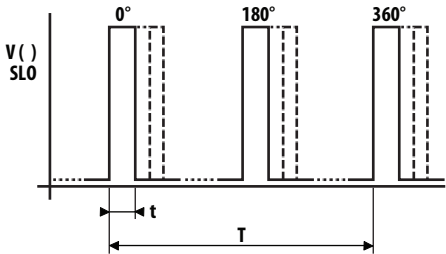
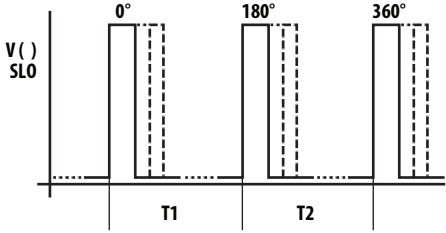


Figure 13. Alignment mode

Table 2. Alignment data

<p>Vp-p MAX (LOCTEST)</p>	<p>The maximum peak-to-peak voltage for the LOCTEST signal. The amplitude of the signal will depend on the total stack-up TIR of the code wheel.</p> 
<p>Duty % AVG</p>	<p>Duty % is calculated on the TiltOut signal with the following formula:</p>  $\text{Duty \%} = \frac{t}{T} \times 100\%$ <p>The average value of Duty % is then calculated based on the number of valid TILTOUT pulses captured.</p>
<p>ON Pulse Width</p>	<p>The ON pulse width of the TiltOut signal, t.</p>
<p>Pulse Ratio</p>	 $\text{Pulse Ratio} = \frac{T1}{T2}$
<p>Results</p>	<p>Provides a PASS / FAIL indicator based on the specification limit provided by the user.</p>

Software will analyze the alignment data and provide a PASS/FAIL indicator based on a set of specification limits provided by the user. To enter the specification limit setting menu, select Tools > Specification as shown in Figure 14. A specification settings dialog will then pop-up as shown in Figure 15. The purpose of each parameter is described in Table 3.

Table 3. Specification settings

Vp-p High Limit Vp-p Low Limit	The maximum / minimum allowable peak-to-peak voltage for the LocTest signal.
Duty % AVG Upper Limit Duty % AVG Lower Limit	The maximum / minimum allowable PWM Duty % for the TiltOut signal. Please refer to Table 2 for the PWM Duty % calculation.
Pulse Ratio High Pulse Ratio Low	The maximum / minimum allowable pulse ratio for the TiltOut signal. The purpose of these parameters is to ensure the periods of the TiltOut pulses are consistent.

Software will output a PASS indicator if all the specification limits in Table 2 are met. Please refer to the product datasheet for details on aligning the code disc.

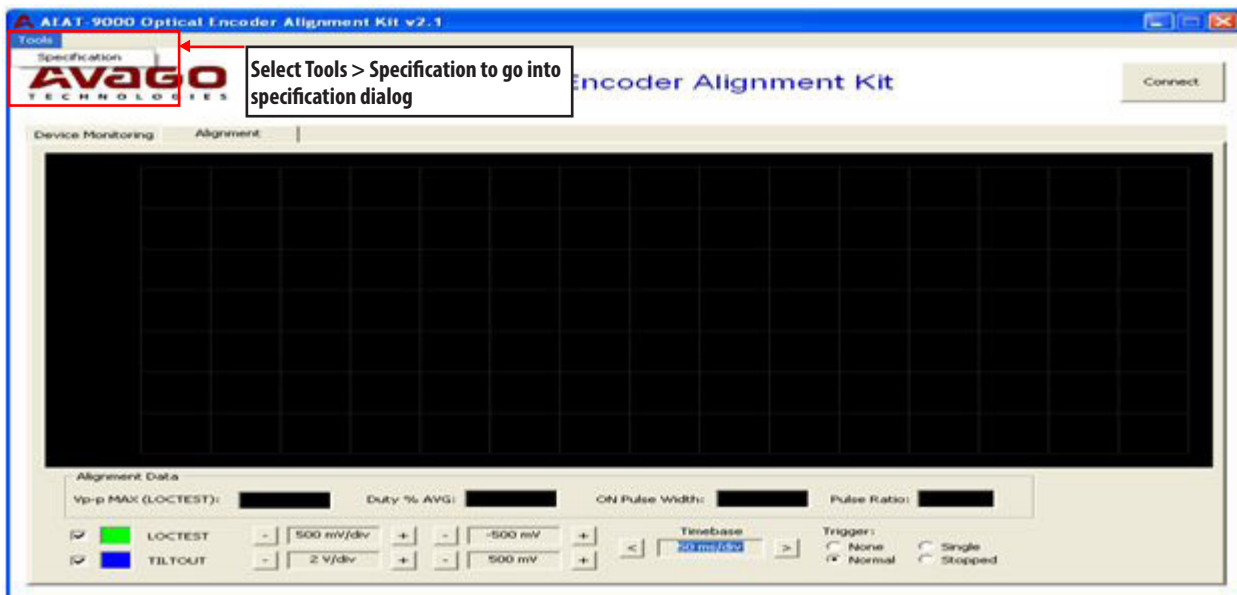


Figure 14. Menu for the alignment specification

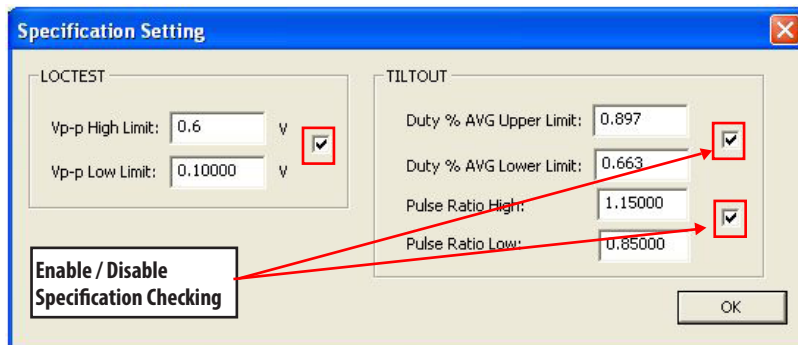


Figure 15. Specification dialog

5 Firmware Update

This section describes the step-by-step procedures for updating the firmware of the HEDS-8949/8969 alignment box.

5.1 System Requirement

The following items are required for updating the firmware of the alignment box

- PC running Microsoft Windows XP operating system or later, and a free USB port
- iBootloader Downloader PC software executable
- Avago HEDS-8949/8969 firmware Hex file (*.hex)

5.2 Procedure

Start the iBootloader Downloader software executable. The startup screen is shown in Figure 16.

Connect the HEDS-8949/8969 alignment box to the PC using the USB port. When first connected, Windows will install the driver automatically. The downloader software will detect the alignment box and prompt if the connected device is connected in bootloader mode or application mode. Figure 16 shows the screen shot of downloader software when the alignment box is in application mode.

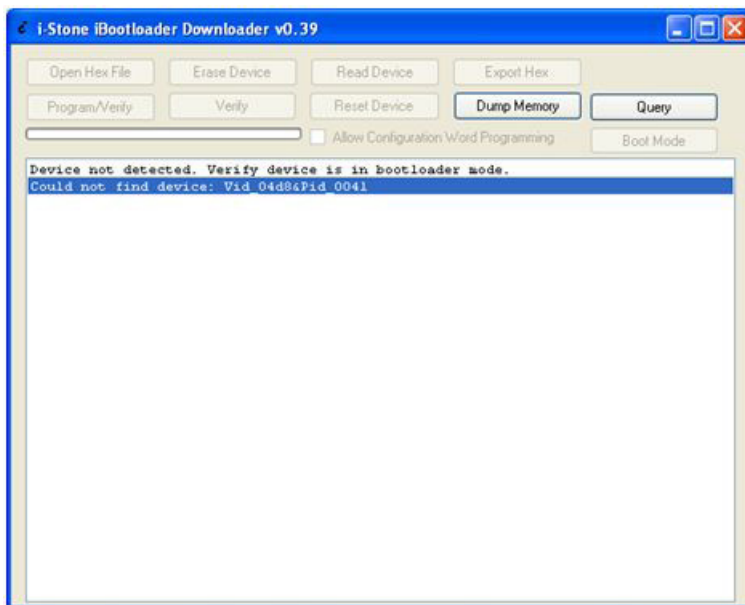


Figure 16. Startup screen of the iBootloader downloader

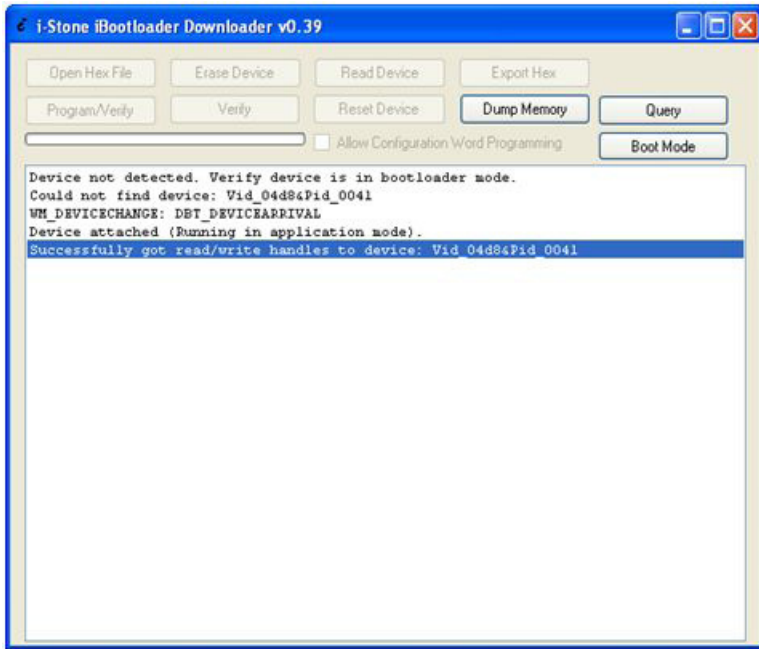


Figure 17. Alignment box detected running in application mode

To update the firmware, the user must switch the alignment box into bootloader mode by clicking the “Boot Mode” button shown in Figure 17. Once completed, the software will prompt a “Device attached” message and more button options are enabled, as shown in Figure 18.

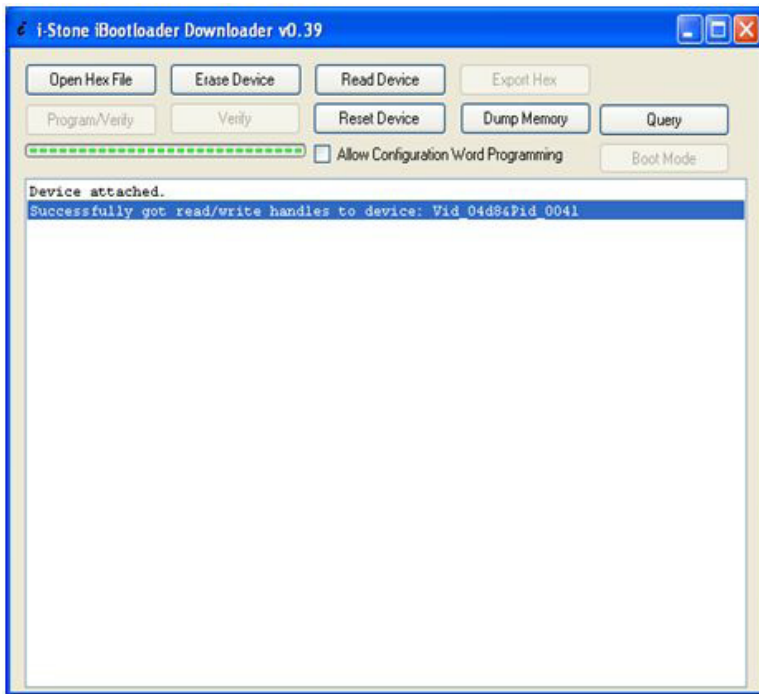


Figure 18. Alignment box detected and running in bootloader mode

Click the “Open Hex File” button and an open file dialog will be prompted. Locate and select the firmware Hex file as shown in Figure 19.

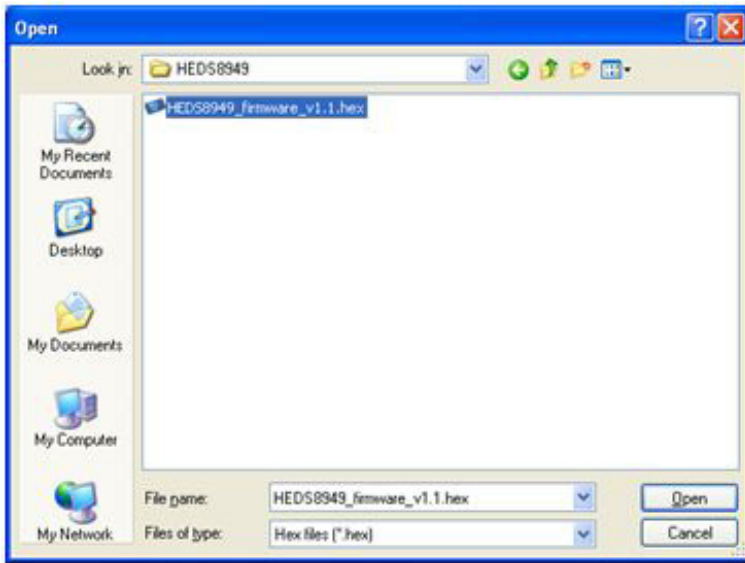


Figure 19. Selecting the firmware Hex file

Proceed with the firmware update by clicking the “Program/Verify” button as shown in Figure 20.

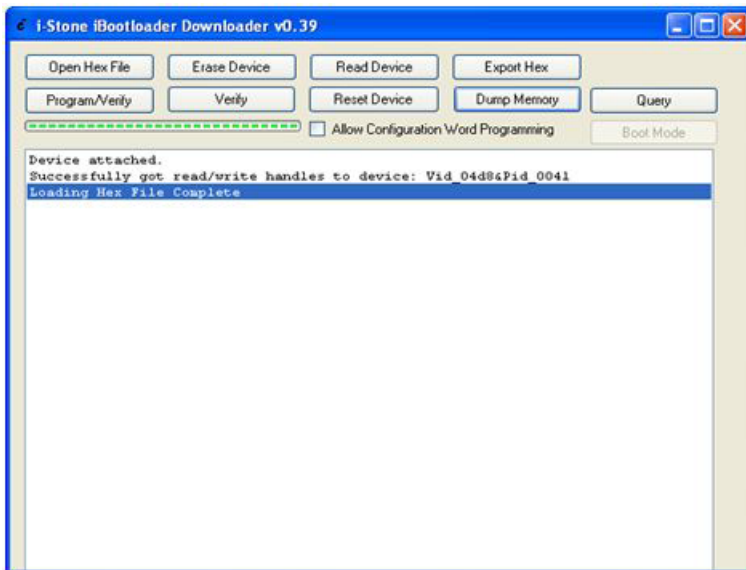


Figure 20. Program verify process and upon completion of Hex file.

The firmware update will start and the progress status of the update will be shown in a message prompt. The firmware update process consists of an erase, program and verify cycle. Once completed, the downloader software will prompt an erase/program/verify completed successfully message as shown in Figure 21.

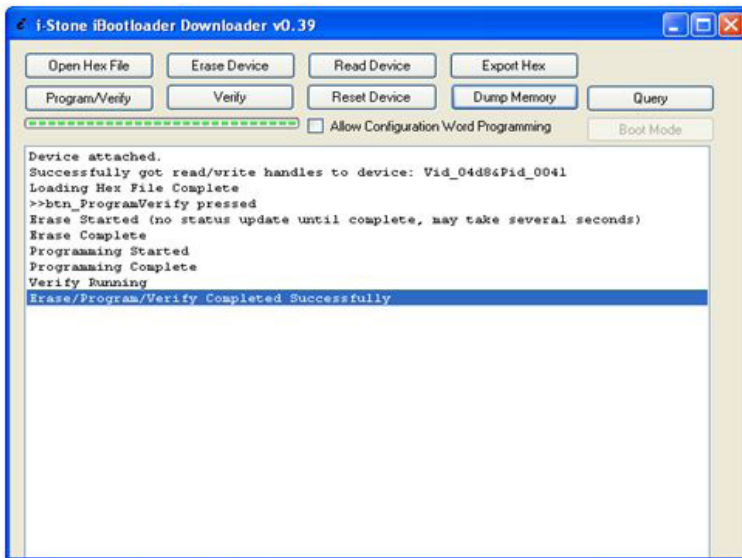


Figure 21. Erase/Program/Verify process

Finally, reset the alignment box by pressing the "Reset Device" button as shown in Figure 22. The alignment module will be running the updated firmware.

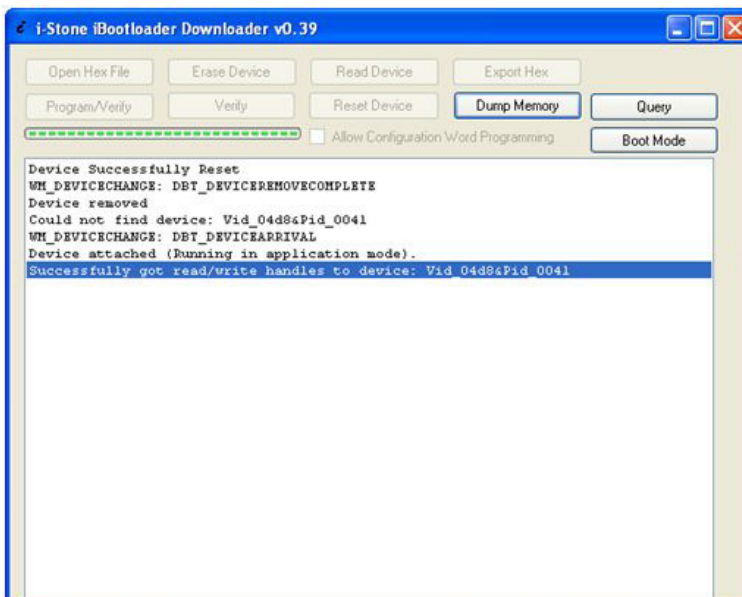


Figure 22. Reset Device process.

For product information and a complete list of distributors, please go to our web site: www.avagotech.com

Avago, Avago Technologies, and the A logo are trademarks of Avago Technologies in the United States and other countries. Data subject to change. Copyright © 2005-2013 Avago Technologies. All rights reserved. AV02-3143EN - September 24, 2013



Компания «Океан Электроники» предлагает заключение долгосрочных отношений при поставках импортных электронных компонентов на взаимовыгодных условиях!

Наши преимущества:

- Поставка оригинальных импортных электронных компонентов напрямую с производств Америки, Европы и Азии, а так же с крупнейших складов мира;
- Широкая линейка поставок активных и пассивных импортных электронных компонентов (более 30 млн. наименований);
- Поставка сложных, дефицитных, либо снятых с производства позиций;
- Оперативные сроки поставки под заказ (от 5 рабочих дней);
- Экспресс доставка в любую точку России;
- Помощь Конструкторского Отдела и консультации квалифицированных инженеров;
- Техническая поддержка проекта, помощь в подборе аналогов, поставка прототипов;
- Поставка электронных компонентов под контролем ВП;
- Система менеджмента качества сертифицирована по Международному стандарту ISO 9001;
- При необходимости вся продукция военного и аэрокосмического назначения проходит испытания и сертификацию в лаборатории (по согласованию с заказчиком);
- Поставка специализированных компонентов военного и аэрокосмического уровня качества (Xilinx, Altera, Analog Devices, Intersil, Interpoint, Microsemi, Actel, Aeroflex, Peregrine, VPT, Syfer, Eurofarad, Texas Instruments, MS Kennedy, Miteq, Cobham, E2V, MA-COM, Hittite, Mini-Circuits, General Dynamics и др.);

Компания «Океан Электроники» является официальным дистрибьютором и эксклюзивным представителем в России одного из крупнейших производителей разъемов военного и аэрокосмического назначения «JONHON», а так же официальным дистрибьютором и эксклюзивным представителем в России производителя высокотехнологичных и надежных решений для передачи СВЧ сигналов «FORSTAR».



JONHON

«JONHON» (основан в 1970 г.)

Разъемы специального, военного и аэрокосмического назначения:

(Применяются в военной, авиационной, аэрокосмической, морской, железнодорожной, горно- и нефтедобывающей отраслях промышленности)

«FORSTAR» (основан в 1998 г.)

ВЧ соединители, коаксиальные кабели, кабельные сборки и микроволновые компоненты:

(Применяются в телекоммуникациях гражданского и специального назначения, в средствах связи, РЛС, а так же военной, авиационной и аэрокосмической отраслях промышленности).



Телефон: 8 (812) 309-75-97 (многоканальный)

Факс: 8 (812) 320-03-32

Электронная почта: ocean@oceanchips.ru

Web: <http://oceanchips.ru/>

Адрес: 198099, г. Санкт-Петербург, ул. Калинина, д. 2, корп. 4, лит. А