

MAX17761 3.3V Output Evaluation Kit

Evaluates: MAX17761 3.3V Output-Voltage Application

General Description

The MAX17761 3.3V output EV kit is a proven design to evaluate the MAX17761 high-efficiency, high-voltage, synchronous step-down DC-DC converter in a TDFN package. The EV kit generates 3.3V at load currents up to 1A from a 4.5V to 76V input supply. The EV kit features a 400kHz switching frequency for optimum efficiency and component size. The EV kit features adjustable input undervoltage lockout, adjustable soft-start, adjustable switching frequency, adjustable current limit, open-drain RESET signal and external frequency synchronization.

Features

- Operates from a 4.5V to 76V Input Supply
- 3.3V Output Voltage
- Up to 1A Output Current
- 400kHz Switching Frequency
- Enable/UVLO Input, Resistor-Programmable UVLO Threshold
- Adjustable Soft-Start Time
- MODE/ILIM Pin to Select Among PWM or PFM Modes and 1.6A or 1.14A current limits
- Auxiliary Bootstrap LDO to improve efficiency
- Open-Drain RESET Output
- External Frequency Synchronization
- Overcurrent and Overtemperature Protection
- Proven PCB Layout
- Fully Assembled and Tested

Quick Start

Recommended Equipment

- MAX17761 3.3V output EV kit
- 4.5V to 76V, 2A DC input power supply
- Load capable of sinking 1A
- Digital voltmeter (DVM)

Procedure

The EV kit is fully assembled and tested. Follow the steps below to verify board operation. **Caution: Do not turn on power supply until all connections are completed.**

- 1) Set the power supply at a voltage between 4.5V and 76V. Disable the power supply.
- 2) Connect the positive terminal of the power supply to the VIN PCB pad and the negative terminal to the nearest PGND PCB pad. Connect the positive terminal of the 1A load to the VOUT PCB pad and the negative terminal to the nearest PGND PCB pad.
- 3) Connect the DVM across the VOUT PCB pad and the nearest PGND PCB pad.
- 4) Verify that shunts are installed across pins 1-2 on jumper JU1, JU2, and JU3 (see [Table 3](#) for details).
- 5) Turn on the DC power supply.
- 6) Enable the load.
- 7) Verify that the DVM displays 3.3

Ordering Information appears at end of data sheet.

MAX17761 3.3V Output Evaluation Kit

Evaluates: MAX17761 3.3V Output-Voltage Application

Detailed Description

The MAX17761 3.3V Output EV kit provides a proven design to evaluate the MAX17761 high-efficiency, high-voltage, synchronous step-down DC-DC converter. The EV kit generates 3.3V at load currents up to 1A from a 4.5V to 76V input supply. The EV kit features a 400kHz switching frequency for optimum efficiency and component size.

The EV kit includes an EN/UVLO PCB pad and JU1 to enable the output at a desired input voltage. The RT/SYNC PCB pad and JU3 allow an external clock to synchronize the device. An additional RESET PCB pad is available for monitoring when the converter output is in regulation.

Soft-Start Input (SS)

The device implements adjustable soft-start operation to reduce inrush current. A capacitor connected from the SS pin to SGND programs the soft-start time for the corresponding output voltage. The selected output capacitance (C_{SEL}) and the output voltage (V_{OUT}) determine the minimum required soft-start capacitor as follows:

$$C_{SS} \geq 30 \times 10^{-6} \times C_{SEL} \times V_{OUT}$$

The soft-start time (t_{SS}) is related to the capacitor connected at SS (C_{SS}) by the following equation:

$$t_{SS} = \frac{C_{SS}}{6.25 \times 10^{-6}}$$

For example, to program a 5.3ms soft-start time, a 33nF capacitor should be connected from the SS pin to SGND. The minimum possible soft-start time is 5ms.

Regulator Enable/Undervoltage-Lockout Level (EN/UVLO)

The device offers an adjustable input undervoltage-lockout level. For always on operation, no shunt should be installed across JU1. To disable the output, install a shunt across pins 2-3 on JU1 and the EN/UVLO pin is pulled to GND. See [Table 3](#) for JU1 settings.

Set the voltage at which each converter turns on with a resistive voltage-divider connected from VIN to SGND. Connect the center node of the divider to EN/UVLO pin.

Choose R1 as follows:

$$R1 \leq (110000 \times V_{INU})$$

Where V_{INU} is the input voltage at which the MAX17761 is required to turn ON and R1 is in Ω . Calculate the value of R2 as follows:

$$R2 = \frac{1.215 \times R1}{(V_{INU} - 1.215 + (2.5\mu A \times R1))}$$

Current Limit and Mode of Operation Selection

The following table lists the values of the resistor R5 to program PWM or PFM modes of operation and 1.6A or 1.14A peak current limits.

Table 1. R_{ILIM} Resistor vs. Modes of Operation and Peak Current Limit

R5 (k Ω)	MODE OF OPERATION	PEAK CURRENT LIMIT (A)
OPEN	PFM	1.6
422	PFM	1.14
243	PWM	1.6
121	PWM	1.14

The mode of operation cannot be changed on-the-fly after power-up.

Switching Frequency Selection and External Frequency synchronization

The RT/SYNC pin programs the switching frequency of the converter. The resistor R7 sets the switching frequency of the part at any one of four discrete frequencies—200kHz, 300kHz, 400kHz, and 600kHz. The following table gives the resistor values.

Table 2. Switching Frequency vs. RT Resistor

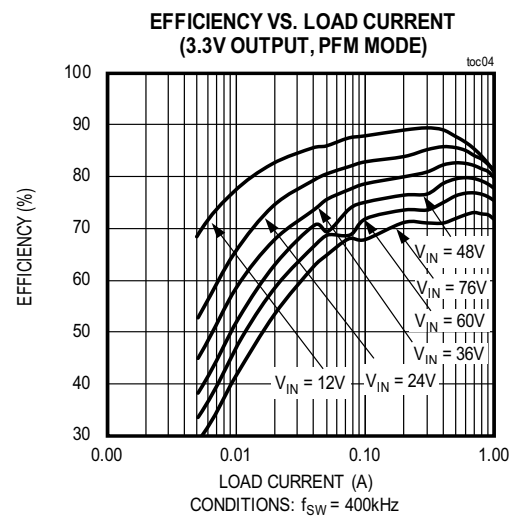
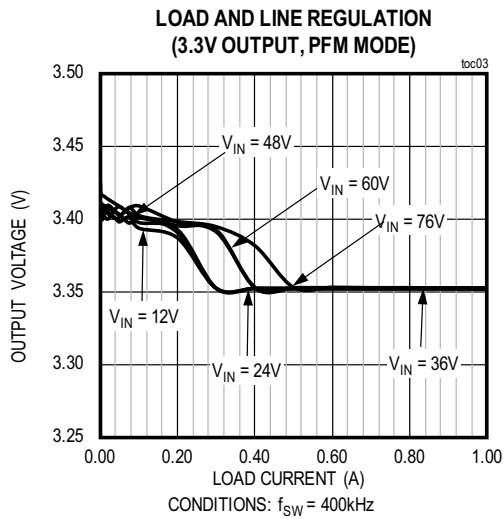
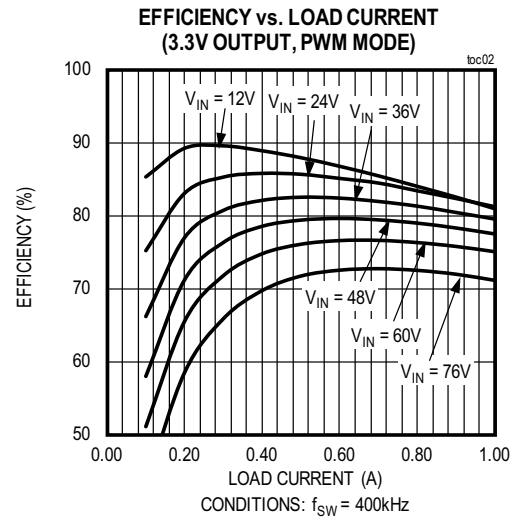
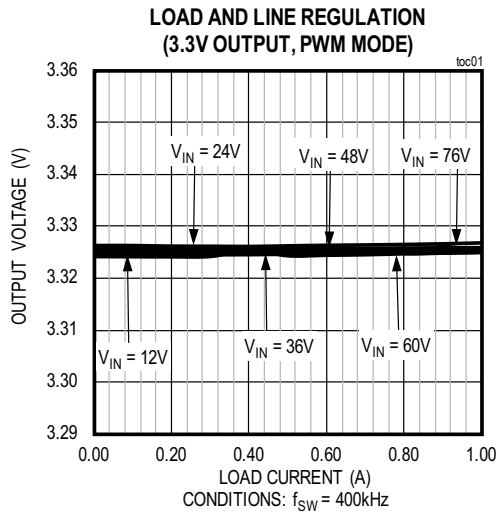
SWITCHING FREQUENCY (kHz)	R7 (k Ω)
200	210
300	140
400	105
600	69.8

The internal oscillator of the MAX17761 can be synchronized to an external clock signal on the RT/SYNC pin. A shunt should be placed across the jumper JU3 for this purpose. The external synchronization clock frequency must be between $1.15 \times f_{SW}$ and $1.4 \times f_{SW}$, where f_{SW} is the frequency programmed by R7.

Table 3. Regulator Enable (EN/UVLO) Description (JU1)

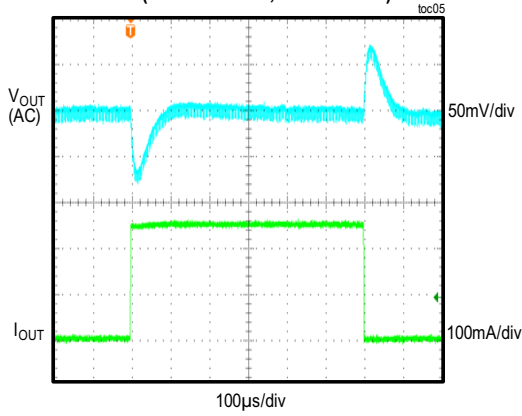
SHUNT POSITION	EN/UVLO PIN	MAX17761 OUTPUT
Not Installed	Floating	Always ON
1-2	Connected to the center node of resistor-divider R1 and R2	Enabled, UVLO level set through the R1 and R2 resistors
2-3	Connected to SGND	Disabled

MAX17761 EV Kit Performance Report

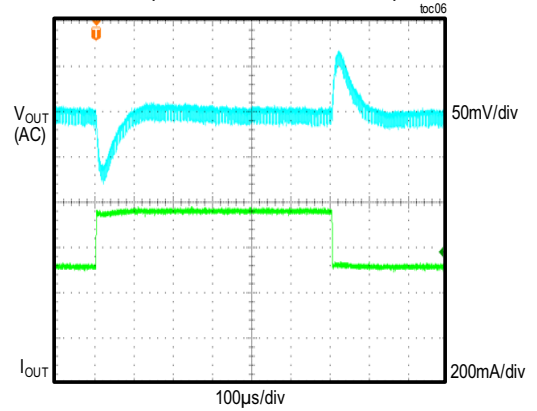


MAX17761 EV Kit Performance Report (continued)

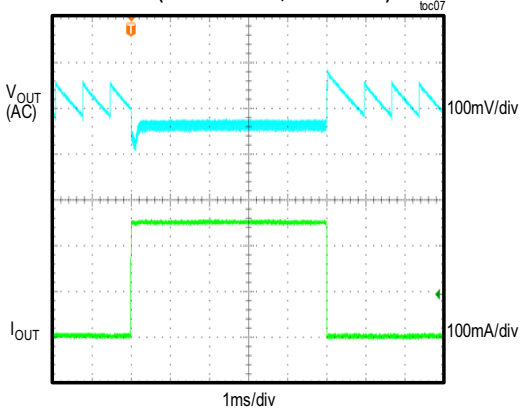
LOAD CURRENT STEPPED FROM 0A TO 0.25A
(3.3V OUTPUT, PWM MODE)



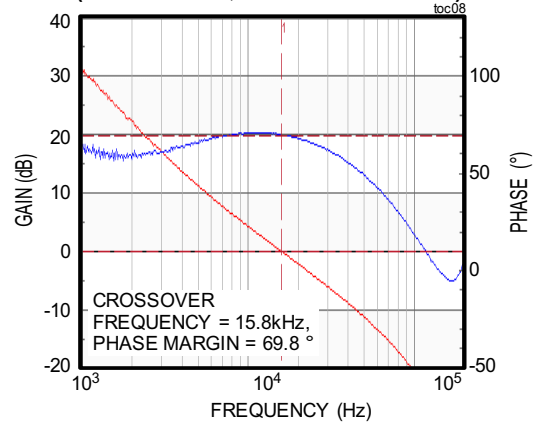
LOAD CURRENT STEPPED FROM 0.5A TO 0.75A
(3.3V OUTPUT, PWM MODE)



LOAD CURRENT STEPPED FROM 0A TO 0.25A
(3.3V OUTPUT, PFM MODE)



BODE PLOT
(3.3V OUTPUT, 1A LOAD CURRENT)



CONDITIONS: $f_{SW} = 400\text{kHz}$, 24V INPUT

MAX17761 3.3V Output Evaluation Kit

Evaluates: MAX17761 3.3V Output-Voltage Application

MAX17761 EV Kit Bill of Materials

No.	Description	Quantity	Designator	Part Number
1	0.1uF 10%, 100V ,X7R,Ceramic capacitor (0603)	1	C1	MURATA GRM188R72A104KA35, TDK CC0603KRX7R0BB104
2	2.2uF 10%, 100V ,X7R,Ceramic capacitor (1210)	1	C2	MURATA GRM32ER72A225KA35, TDK CGA6N3X7R2A225K230
3	22uF 20%,100V, Electrolytic capacitor	1	C3	PANASONIC EEE-TG2A220UP
4	1uF 10%, 6.3V ,X7R,Ceramic capacitor (0603)	1	C4	MURATA GRM188R70J105KA01, SAMSUNG ELECTRONICS CL10B105KQ8NNNC
5	47pF, 5%, 25V, COG, Ceramic capacitor(0402)	1	C5	MURATA GRM1555C1E470JA01
6	33nF, 10%, 25V, X7R, Ceramic capacitor(0402)	1	C6	MURATA GRM155R71E333KA88
7	47uF,10%,10V, X7R,Ceramic capacitor (1210)	1	C7	MURATA GRM32ER71A476KE15
8	6800pF,10%,50V,X7R,Ceramic capacitor(0402)	1	C8	MURATA GRM155R71H682KA88
9	3-pin header (36-pin header 0.1" centers)	1	JU1	Sullins: PEC03SAAN
10	2-pin header (36-pin header 0.1" centers)	2	JU2,JU3	Sullins: PEC02SAAN
11	INDUCTOR, 22 uH,3.6A	1	L1	Coilcraft XAL5050-223ME
12	430k ohm ±1%,1/10W, resistor (0603)	1	R1	Any
13	137k ohm ±1%,1/10W, resistor (0603)	1	R2	Any
14	57.6k ohm ±1%,1/10W, resistor (0402)	1	R3	Any
15	18.2k ohm ±1%, 1/16W,resistor (0402)	1	R4	Any
16	Not installed, OPEN (0402)	0	R5	Any
17	10k ohm ±1%,1/10W, resistor (0402)	1	R6	Any
18	105k ohm ±1%,1/16W, resistor (0402)	1	R7	Any
19	15.4k ohm ±1%, 1/10W, resistor (0402)	1	R8	Any
20	Buck Converter MAX17761ATC+	1	U1	MAX17761ATC+
21	Shunts (JU1, JU2, JU3)	3	-	Sullins: STC02SYAN

Component Suppliers

SUPPLIER	WEBSITE
Murata Americas	www.murata.com
Panasonic Corp.	www.panasonic.com
Coilcraft	www.coilcraft.com
TDK Corp.	www.tdk.com
Samsung Electronics	www.samsung.com
SullinsCorp	www.sullinscorp.com

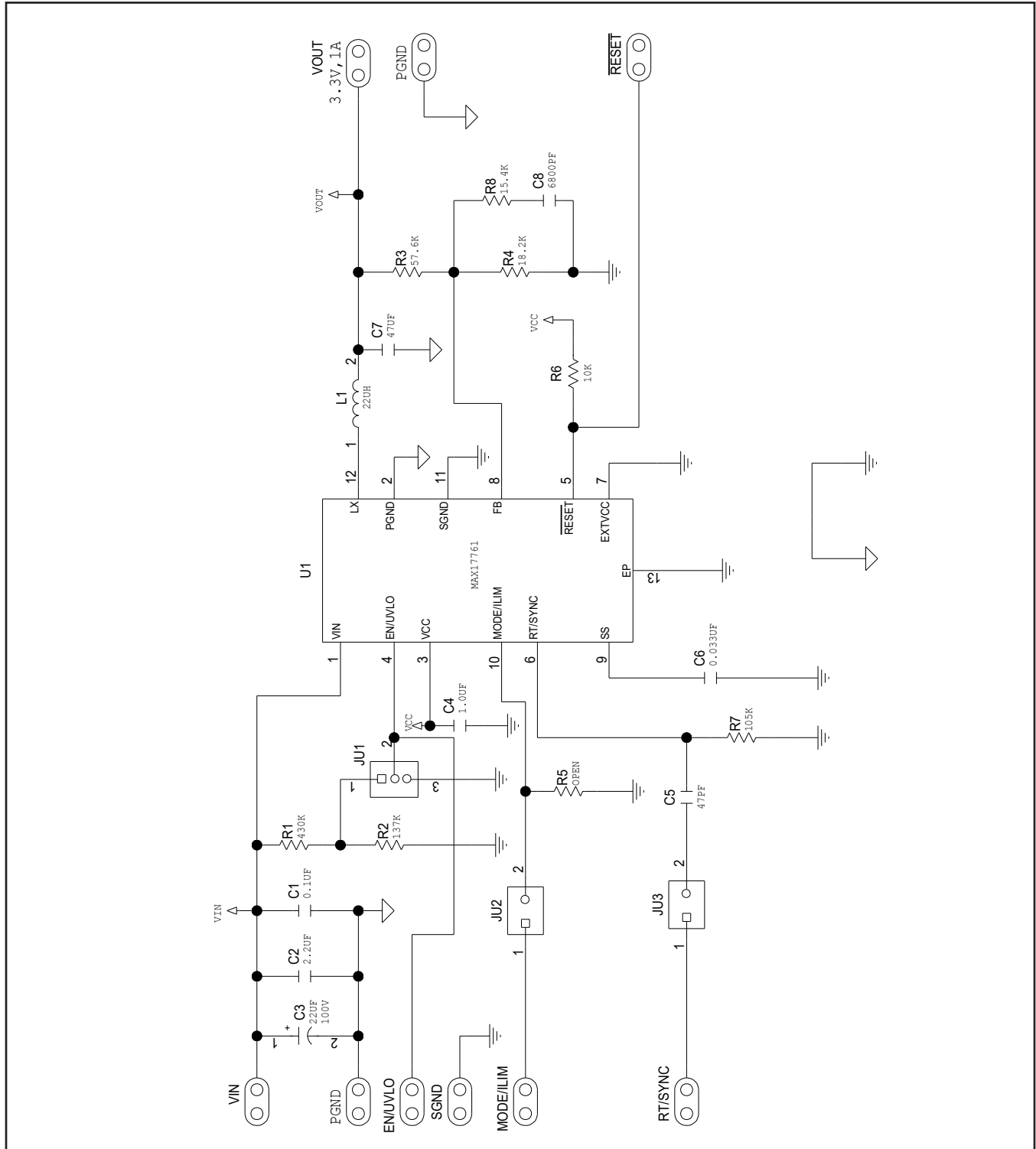
Note: Indicate that you are using the MAX17761 when contacting these component suppliers.

Ordering Information

PART	TYPE
MAX17761EVKITA#	EV Kit

#Denotes RoHS compliant.

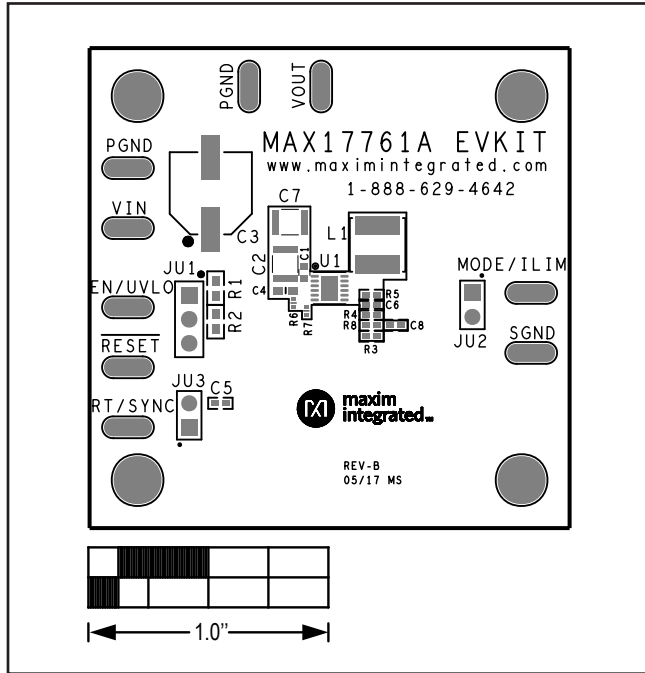
MAX17761 EV Kit Schematic



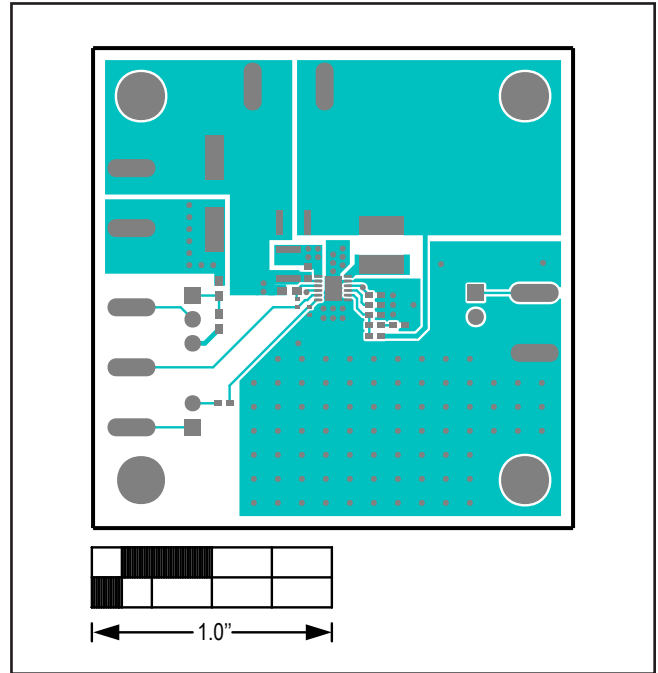
MAX17761 3.3V Output Evaluation Kit

Evaluates: MAX17761 3.3V Output-Voltage Application

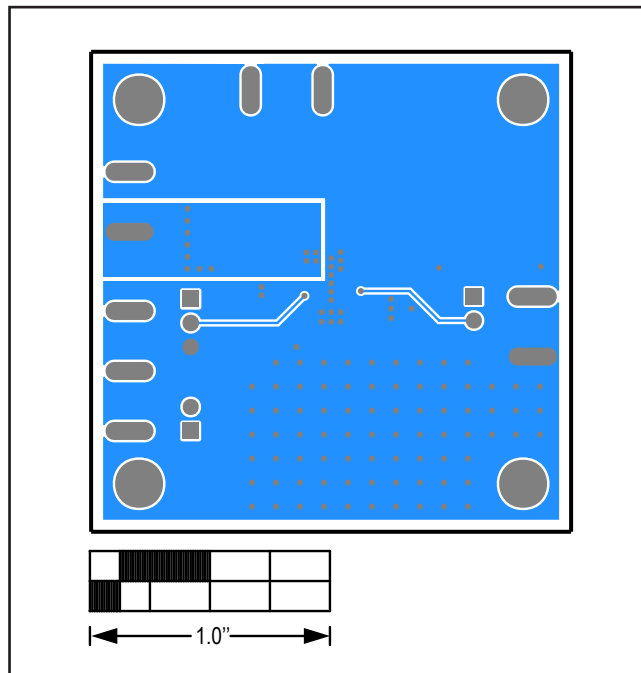
MAX17761 EV Kit PCB Layout



MAX17761 EV Kit PCB 3.3V Output Top Silkscreen



MAX17761 EV Kit PCB 3.3V Output Top Layer



MAX17761 EV Kit PCB 3.3V Output Bottom Layer

Revision History

REVISION NUMBER	REVISION DATE	DESCRIPTION	PAGES CHANGED
0	9/17	Initial release	—
1	2/18	Updated <i>Soft-Start Input (SS)</i> section, TOC08, <i>Component Supplier</i> table, and replaced <i>Bill of Materials</i> and <i>Schematic</i> diagram.	

For pricing, delivery, and ordering information, please contact Maxim Direct at 1-888-629-4642, or visit Maxim Integrated's website at www.maximintegrated.com.

Maxim Integrated cannot assume responsibility for use of any circuitry other than circuitry entirely embodied in a Maxim Integrated product. No circuit patent licenses are implied. Maxim Integrated reserves the right to change the circuitry and specifications without notice at any time.

Компания «Океан Электроники» предлагает заключение долгосрочных отношений при поставках импортных электронных компонентов на взаимовыгодных условиях!

Наши преимущества:

- Поставка оригинальных импортных электронных компонентов напрямую с производств Америки, Европы и Азии, а так же с крупнейших складов мира;
- Широкая линейка поставок активных и пассивных импортных электронных компонентов (более 30 млн. наименований);
- Поставка сложных, дефицитных, либо снятых с производства позиций;
- Оперативные сроки поставки под заказ (от 5 рабочих дней);
- Экспресс доставка в любую точку России;
- Помощь Конструкторского Отдела и консультации квалифицированных инженеров;
- Техническая поддержка проекта, помощь в подборе аналогов, поставка прототипов;
- Поставка электронных компонентов под контролем ВП;
- Система менеджмента качества сертифицирована по Международному стандарту ISO 9001;
- При необходимости вся продукция военного и аэрокосмического назначения проходит испытания и сертификацию в лаборатории (по согласованию с заказчиком);
- Поставка специализированных компонентов военного и аэрокосмического уровня качества (Xilinx, Altera, Analog Devices, Intersil, Interpoint, Microsemi, Actel, Aeroflex, Peregrine, VPT, Syfer, Eurofarad, Texas Instruments, MS Kennedy, Miteq, Cobham, E2V, MA-COM, Hittite, Mini-Circuits, General Dynamics и др.);

Компания «Океан Электроники» является официальным дистрибьютором и эксклюзивным представителем в России одного из крупнейших производителей разъемов военного и аэрокосмического назначения «JONHON», а так же официальным дистрибьютором и эксклюзивным представителем в России производителя высокотехнологичных и надежных решений для передачи СВЧ сигналов «FORSTAR».



JONHON

«JONHON» (основан в 1970 г.)

Разъемы специального, военного и аэрокосмического назначения:

(Применяются в военной, авиационной, аэрокосмической, морской, железнодорожной, горно- и нефтедобывающей отраслях промышленности)

«FORSTAR» (основан в 1998 г.)

ВЧ соединители, коаксиальные кабели,
кабельные сборки и микроволновые компоненты:

(Применяются в телекоммуникациях гражданского и специального назначения, в средствах связи, РЛС, а так же военной, авиационной и аэрокосмической отраслях промышленности).



Телефон: 8 (812) 309-75-97 (многоканальный)

Факс: 8 (812) 320-03-32

Электронная почта: ocean@oceanchips.ru

Web: <http://oceanchips.ru/>

Адрес: 198099, г. Санкт-Петербург, ул. Калинина, д. 2, корп. 4, лит. А