

CONTROL KNOBS

MACHINED ALUMINUM..... L2 - L7

MOLDED ABS..... L8

MOLDED PHENOLIC..... L9 - L11

SPECIFICATIONS SUBJECT TO CHANGE WITHOUT NOTICE.



CONTROL KNOBS, MACHINED ALUMINUM

FEATURES

- Anodized natural or black gloss finish.
- Anti-static plastic insert. (on many models)
- Positive retention #6-32 set screws.
- Fits 1/8" dia. & 1/4" dia. shafts.
- Functionally rugged.
- Special designs available.

MATERIALS

Knob:

Machined aluminium (with plastic insert, where indicated).
Brass.

Threaded Insert:

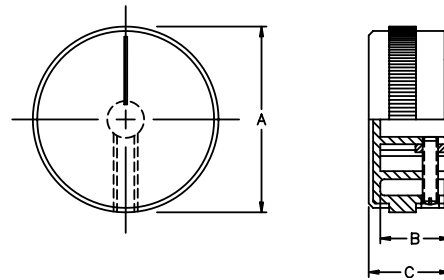
Heat treated high alloy steel with cup point and hex head,
or slotted head. Note: 1 or 2 supplied, depending on model.

Setscrew:

Notes: Dims. in inches & (millimeters). Shaft size is last 3 digits of Model No.

41005 SERIES

Smooth finish with knurled black plastic insert and black indicator line on top

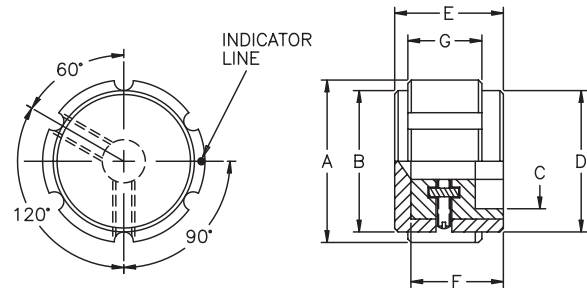
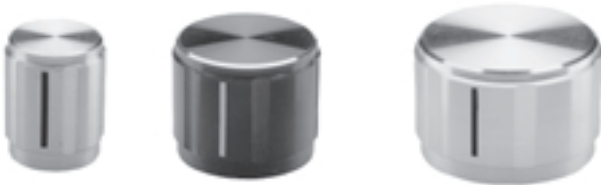


Note: Knob color is natural only for this Series.

MODEL (Color natural)	A	B	C
410051A1/8	.630 (16.0)	.512 (13.0)	.590 (15.0)
410051A1/4	.630 (16.0)	.512 (13.0)	.590 (15.0)
410053A1/8	.874 (22.2)	.472 (12.0)	.531 (13.5)
410053A1/4	.874 (22.2)	.646 (16.4)	.690 (17.5)
410055A1/4	1.260 (32.0)	.472 (12.0)	.551 (14.0)

42001 SERIES

Fluted with plastic insert and line indicator on side

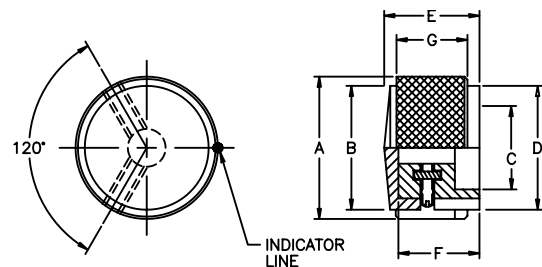


MODEL (Color-natural)	MODEL (Color-black)	A	B	C	D	E	F	G
420011A1/8*	420011B1/8*	.500 (12.7)	.430 (10.9)	.380 (9.7)	.430 (10.9)	.630 (16.0)	.512 (13.0)	.430 (10.9)
420011A1/4*	420011B1/4*	.500 (12.7)	.430 (10.9)	.380 (9.7)	.430 (10.9)	.630 (16.0)	.512 (13.0)	.430 (10.9)
420013A1/4	420013B1/4	.748 (19.0)	.638 (16.2)	.591 (15.0)	.661 (16.8)	.630 (16.0)	.512 (13.0)	.429 (10.9)
420015A1/4	420015B1/4	.941 (23.9)	.819 (20.8)	.709 (18.0)	.819 (20.8)	.630 (16.0)	.512 (13.0)	.429 (10.9)

* indicates solid aluminum knob

42003 SERIES

Diamond knurl plastic insert and line indicator on side



Note: 420031A1/8 & 420031A1/4 have only one set screw.

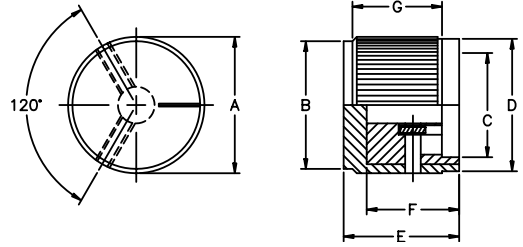
MODEL (Color-natural)	MODEL (Color-black)	A	B	C	D	E	F	G
420031A1/8*	420031B1/8*	.500 (12.7)	.402 (10.2)	.380 (9.7)	.402 (10.2)	.634 (16.1)	.516 (13.1)	.469 (11.9)
420031A1/4*	420031B1/4*	.500 (12.7)	.402 (10.2)	.380 (9.7)	.402 (10.2)	.634 (16.1)	.516 (13.1)	.469 (11.9)
420033A1/4*	420033B1/4*	.748 (19.0)	.681 (17.3)	.591 (15.0)	.681 (17.3)	.634 (16.1)	.516 (13.1)	.469 (11.9)
420035A1/4*	420035B1/4*	.940 (23.9)	.870 (22.1)	.709 (18.0)	.870 (22.1)	.634 (16.1)	.516 (13.1)	.469 (11.9)
420037A1/4*	420037B1/4*	1.252 (31.8)	1.170 (29.6)	.980 (24.9)	1.170 (29.6)	.748 (19.0)	.630 (16.0)	.591 (15.0)

* indicates solid aluminum knob

SPECIFICATIONS SUBJECT TO CHANGE WITHOUT NOTICE.

Notes: Dims. in inches & (millimeters). Shaft size is last 3 digits of Model No.

42004 SERIES Straight knurl with plastic insert and line indicator on top

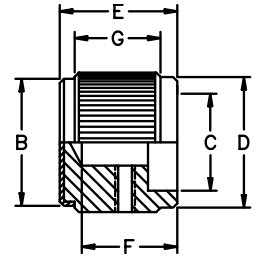
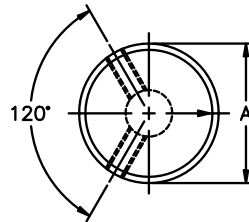


Note: 420041A1/8 & 420041A1/4 have only one set screw.

MODEL (Color-natural)	MODEL (Color-black)	A	B	C	D	E	F	G
420041A1/8*	420041B1/8*	.500 (12.7)	.480 (12.2)	.378 (9.6)	.480 (12.2)	.788 (20)	.520 (13.2)	.453 (11.5)
420041A1/4*	420041B1/4*	.500 (12.7)	.480 (12.2)	.378 (9.6)	.480 (12.2)	.788 (20)	.520 (13.2)	.453 (11.5)
420043A1/4	420043B1/4	.748 (19.0)	.728 (18.5)	.524 (13.3)	.728 (18.5)	.788 (20)	.520 (13.2)	.453 (11.5)
420045A1/4	420045B1/4	.929 (23.6)	.870 (22.1)	.720 (18.3)	.870 (22.1)	.788 (20)	.520 (13.2)	.453 (11.5)

* indicates solid aluminum knob

42005 SERIES Solid aluminum with straight knurl and arrowhead indicator on top

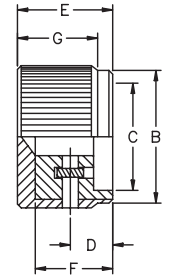
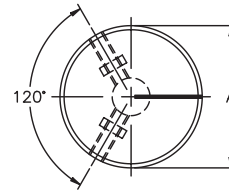


Note: 420051A1/8 & 420051A1/4 have only one set screw.

MODEL (Color-natural)	MODEL (Color-black)	A	B	C	D	E	F	G
420051A1/8*	420051B1/8*	.500 (12.7)	.480 (12.2)	.378 (9.6)	.480 (12.2)	.638 (16.2)	.520 (13.2)	.453 (11.5)
420051A1/4*	420051B1/4*	.500 (12.7)	.480 (12.2)	.378 (9.6)	.480 (12.2)	.638 (16.2)	.520 (13.2)	.453 (11.5)
420053A1/4	420053B1/4	.748 (19.0)	.728 (18.5)	.524 (13.3)	.728 (18.5)	.638 (16.2)	.520 (13.2)	.453 (11.5)
420055A1/4	420055B1/4	.929 (23.6)	.870 (23.2)	.720 (18.3)	.870 (23.2)	.638 (16.2)	.520 (13.2)	.453 (11.5)

* indicates solid aluminum knob

42006 SERIES Straight knurl with plastic insert and line indicator on top and side

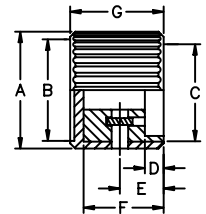
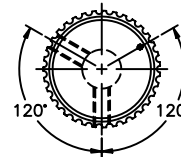


Note: 420061A1/8 & 420061A1/4 have only one set screw.

MODEL (Color-natural)	MODEL (Color-black)	A	B	C	D	E	F	G
420061A1/8*	420061B1/8*	.500 (12.7)	.480 (12.2)	.378 (9.6)	.280 (7.1)	.638 (16.2)	.520 (13.2)	.524 (13.3)
420061A1/4*	420061B1/4*	.500 (12.7)	.480 (12.2)	.378 (9.6)	.280 (7.1)	.638 (16.2)	.520 (13.2)	.524 (13.3)
420063A1/4	420063B1/4	.748 (19.0)	.728 (18.5)	.524 (13.3)	.280 (7.1)	.638 (16.2)	.520 (13.2)	.524 (13.3)
420065A1/4	420065B1/4	.940 (23.9)	.870 (23.2)	.720 (18.3)	.280 (7.1)	.638 (16.2)	.520 (13.2)	.524 (13.3)
420067A1/4	420067B1/4	1.248 (31.7)	1.220 (31.0)	1.030 (26.2)	.280 (7.1)	.638 (16.2)	.512 (13.0)	.531 (13.5)

* indicates solid aluminum knob

42007 SERIES Serrated diamond trim with plastic insert and dot indicator on top



Note: 420071A1/8 & 420072A1/8 have only one set screw. * indicates solid aluminum knob

MODEL (Color-natural)	MODEL (Color-black)	A	B	C	D	E	F	G
420071A1/8*	420071B1/8*	.370 (9.4)	.268 (6.8)	.276 (7.0)	.091 (2.3)	.200 (5.1)	.240 (6.1)	.300 (7.6)
420072A1/8*	420072B1/8*	.370 (9.4)	.268 (6.8)	.276 (7.0)	.091 (2.3)	.200 (5.1)	.358 (9.1)	.449 (11.4)
420072A1/4*	420072B1/4*	.370 (9.4)	.268 (6.8)	.276 (7.0)	.091 (2.3)	.200 (5.1)	.358 (9.1)	.449 (11.4)
420073A1/8*	420073B1/8*	.492 (12.5)	.386 (9.8)	.380 (9.7)	.120 (3.1)	.280 (7.1)	.512 (13.0)	.598 (15.2)
420073A1/4*	420073B1/4*	.492 (12.5)	.386 (9.8)	.380 (9.7)	.120 (3.1)	.280 (7.1)	.512 (13.0)	.598 (15.2)
420074A1/4	420074B1/4	.748 (19.0)	.650 (16.5)	.587 (14.9)	.120 (3.1)	.280 (7.1)	.512 (13.0)	.598 (15.2)

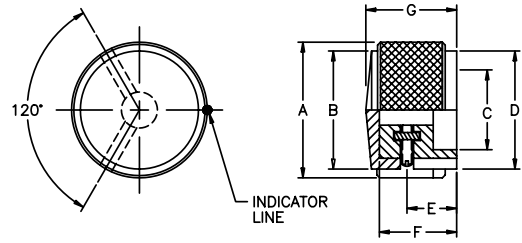
* indicates solid aluminum knob

SPECIFICATIONS SUBJECT TO CHANGE WITHOUT NOTICE.

L

Notes: Dims. in inches & (millimeters). Shaft size is last 3 digits of Model No.

42008 SERIES Square serrations with plastic insert and line indicator on side

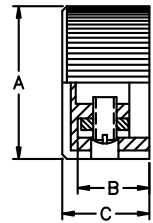
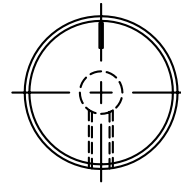
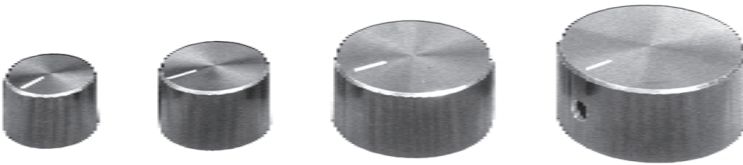


Note: 420081A1/8 & 420081A1/4 have only one set screw.

MODEL (Color-natural)	MODEL (Color-black)	A	B	C	D	E	F	G
420081A1/8*	420081B1/8*	.500 (12.7)	.402 (10.2)	.380 (9.7)	.402 (10.2)	.280 (7.1)	.512 (13.0)	.630 (16.0)
420081A1/4*	420081B1/4*	.500 (12.7)	.402 (10.2)	.380 (9.7)	.402 (10.2)	.280 (7.1)	.512 (13.0)	.630 (16.0)
420083A1/4	420083B1/4	.748 (19.0)	.681 (17.3)	.587 (14.9)	.681 (17.3)	.280 (7.1)	.512 (13.0)	.630 (16.0)
420085A1/4	420085B1/4	.940 (23.9)	.870 (22.1)	.709 (18.0)	.870 (22.1)	.280 (7.1)	.512 (13.0)	.630 (16.0)
420087A1/4	420087B1/4	1.248 (31.7)	1.165 (29.6)	.985 (25)	1.165 (29.6)	.280 (7.1)	.630 (16.0)	.630 (16.0)

* indicates solid aluminum knob

42009 SERIES Straight knurl with plastic insert and line indicator on top and chamfer around top

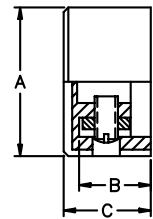
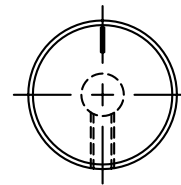


Note: Knob color is black only for this Series.

MODEL (Color black)	A	B	C
420091B1/8	.732 (18.6)	.374 (9.5)	.472 (12.0)
420091B1/4	.732 (18.6)	.374 (9.5)	.472 (12.0)
420092B1/4	.898 (22.8)	.433 (11.0)	.512 (13.0)
420093B1/4	1.280 (32.5)	.492 (12.5)	.551 (14.0)
420094B1/4	1.512 (38.4)	.531 (13.5)	.630 (16.0)

* indicates solid aluminum knob

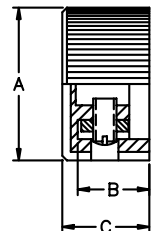
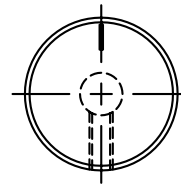
42011 SERIES Smooth finish with plastic insert and line indicator on top



MODEL (Color-natural)	MODEL (Color-black)	A	B	C
420111A1/8	420111B1/8	.709 (18.0)	.374 (9.5)	.472 (12.0)
420111A1/4	420111B1/4	.709 (18.0)	.374 (9.5)	.472 (12.0)
420112A1/4	420112B1/4	.874 (22.2)	.433 (11.0)	.512 (13.0)
420113A1/4	420113B1/4	1.255 (31.9)	.492 (12.5)	.551 (14.0)
420114A1/4	420114B1/4	1.488 (37.8)	.531 (13.5)	.630 (16.0)

* indicates solid aluminum knob

42012 SERIES Straight knurl with plastic insert and line indicator on top



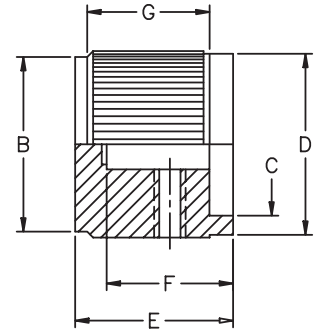
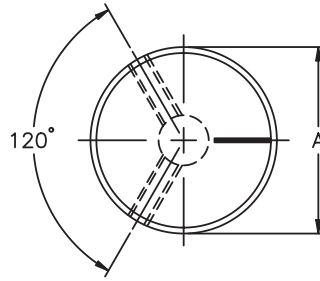
MODEL (Color-natural)	A	B	C
420121A1/8	.732 (18.6)	.374 (9.5)	.472 (12.0)
420121A1/4	.732 (18.6)	.374 (9.5)	.472 (12.0)
420122A1/4	.898 (22.8)	.433 (11.0)	.512 (13.0)
420123A1/4	1.280 (32.5)	.492 (12.5)	.551 (14.0)
420124A1/4	1.512 (38.4)	.531 (13.5)	.630 (16.0)

* indicates solid aluminum knob

SPECIFICATIONS SUBJECT TO CHANGE WITHOUT NOTICE.

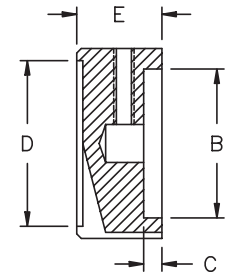
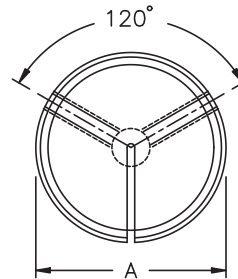
Notes: Dims. in inches & (millimeters). Shaft size is last 3 digits of Model No.

KB SERIES Solid aluminum with straight knurl and line indicator on top



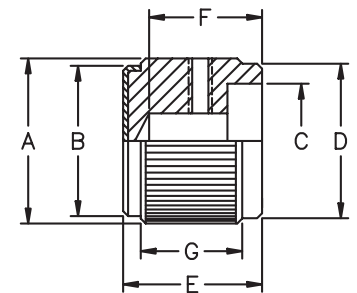
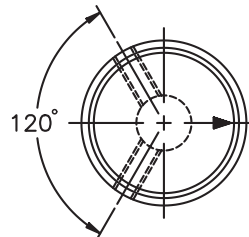
MODEL	COLOR	A	B	C	D	E	F	G
KB500A1/8AL	Natural	.500 (12.7)	.430 (10.9)	.390 (9.90)	.470 (11.9)	.790 (20.0)	.630 (16.0)	.610 (15.5)
KB500A1/4AL	Natural	.500 (12.7)	.430 (10.9)	.390 (9.90)	.470 (11.9)	.790 (20.0)	.630 (16.0)	.610 (15.5)
KB500B1/8AL	Black	.500 (12.7)	.430 (10.9)	.390 (9.90)	.470 (11.9)	.790 (20.0)	.630 (16.0)	.610 (15.5)
KB500B1/4AL	Black	.500 (12.7)	.430 (10.9)	.390 (9.90)	.470 (11.9)	.790 (20.0)	.630 (16.0)	.610 (15.5)
KB700A1/4AL	Natural	.750 (19.0)	.680 (17.3)	.590 (15.0)	.710 (18.0)	.790 (20.0)	.630 (16.0)	.610 (15.5)
KB700B1/4AL	Black	.750 (19.0)	.680 (17.3)	.590 (15.0)	.710 (18.0)	.790 (20.0)	.630 (16.0)	.610 (15.5)
KB900A1/4AL	Natural	.930 (23.6)	.870 (22.1)	.710 (18.0)	.900 (22.9)	.790 (20.0)	.630 (16.0)	.610 (15.5)
KB900B1/4AL	Black	.930 (23.6)	.870 (22.1)	.710 (18.0)	.900 (22.9)	.790 (20.0)	.630 (16.0)	.610 (15.5)
TWO-TONED BODY-TOP								
KB500AB1/8AL	NTL. & BLK.	.500 (12.7)	.430 (10.9)	.390 (9.90)	.470 (11.9)	.790 (20.0)	.630 (16.0)	.610 (15.5)
KB500AB1/4AL	NTL. & BLK.	.500 (12.7)	.430 (10.9)	.390 (9.90)	.470 (11.9)	.790 (20.0)	.630 (16.0)	.610 (15.5)
KB500BA1/8AL	BLK. & NTL.	.500 (12.7)	.430 (10.9)	.390 (9.90)	.470 (11.9)	.790 (20.0)	.630 (16.0)	.610 (15.5)
KB500BA1/4AL	BLK. & NTL.	.500 (12.7)	.430 (10.9)	.390 (9.90)	.470 (11.9)	.790 (20.0)	.630 (16.0)	.610 (15.5)
KB700AB1/4AL	NTL. & BLK.	.750 (19.0)	.680 (17.3)	.590 (15.0)	.710 (18.0)	.790 (20.0)	.630 (16.0)	.610 (15.5)
KB700BA1/4AL	BLK. & NTL.	.750 (19.0)	.680 (17.3)	.590 (15.0)	.710 (18.0)	.790 (20.0)	.630 (16.0)	.610 (15.5)
KB900AB1/4AL	NTL. & BLK.	.930 (23.6)	.870 (22.1)	.710 (18.0)	.900 (22.9)	.790 (20.0)	.630 (16.0)	.610 (15.5)
KB900BA1/4AL	BLK. & NTL.	.930 (23.6)	.870 (22.1)	.710 (18.0)	.900 (22.9)	.790 (20.0)	.630 (16.0)	.610 (15.5)

KHF SERIES Solid aluminum with smooth finish and sawcut indicator on top and side



MODEL (Color-natural)	A	B	C	D	E
KHF500A1/4	.500 (12.7)	.380 (9.65)	.120 (3.05)	.340 (8.64)	.560 (14.2)
KHF700A1/4	.750 (19.0)	.590 (14.90)	.120 (3.05)	.580 (14.7)	.560 (14.2)
KHF900A1/4	.940 (23.9)	.710 (18.0)	.120 (3.05)	.780 (19.8)	.560 (14.2)
KHF1250A1/4	1.25 (31.8)	.980 (24.9)	.120 (3.05)	1.09 (27.7)	.560 (14.2)

KN SERIES Solid aluminum with straight knurl and arrowhead indicator on top



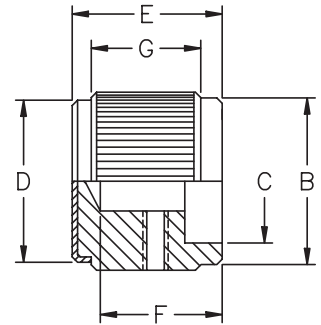
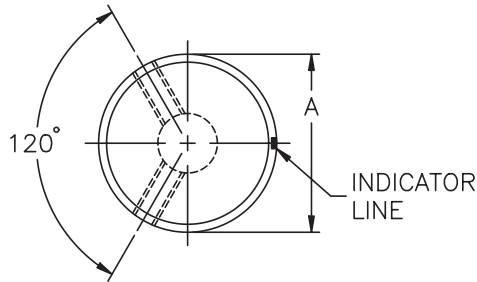
MODEL (Two-toned)	COLOR (Body-top)	A	B	C	D	E	F	G
KN501BA1/8	Blk. & Natural	.500 (12.7)	.450 (11.4)	.380 (9.65)	.450 (11.4)	.630 (16.0)	.510 (13.0)	.460 (11.7)
KN501BA1/4	Blk. & Natural	.500 (12.7)	.450 (11.4)	.380 (9.65)	.450 (11.4)	.630 (16.0)	.510 (13.0)	.460 (11.7)
KN701BA1/8	Blk. & Natural	.750 (19.0)	.680 (17.3)	.590 (15.0)	.700 (17.8)	.630 (16.0)	.510 (13.0)	.460 (11.7)
KN701BA1/4	Blk. & Natural	.750 (19.0)	.680 (17.3)	.590 (15.0)	.700 (17.8)	.630 (16.0)	.510 (13.0)	.460 (11.7)

SPECIFICATIONS SUBJECT TO CHANGE WITHOUT NOTICE.

L

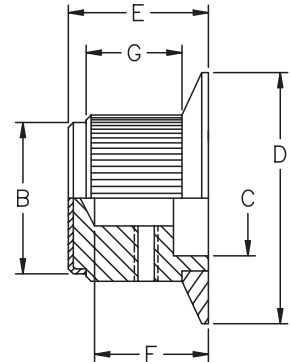
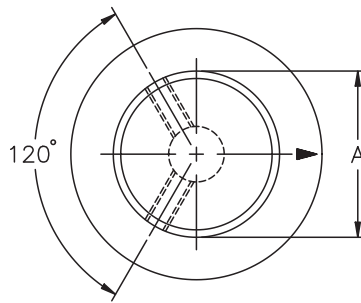
Notes: Dims. in inches & (millimeters). Shaft size is last 3 digits of Model No.

KN SERIES Solid aluminum with straight knurl and line indicator on side



MODEL (Two-toned)	COLOR (Body-top)	A	B	C	D	E	F	G
KN500AB1/8	Natural & Blk.	.500 (12.7)	.450 (11.4)	.380 (9.65)	.450 (11.4)	.630 (16.0)	.510 (13.0)	.460 (11.7)
KN500AB1/4	Natural & Blk.	.500 (12.7)	.450 (11.4)	.380 (9.65)	.450 (11.4)	.630 (16.0)	.510 (13.0)	.460 (11.7)
KN500BA1/8	Blk. & Natural	.500 (12.7)	.450 (11.4)	.380 (9.65)	.450 (11.4)	.630 (16.0)	.510 (13.0)	.460 (11.7)
KN500BA1/4	Blk. & Natural	.500 (12.7)	.450 (11.4)	.380 (9.65)	.450 (11.4)	.630 (16.0)	.510 (13.0)	.460 (11.7)
KN700AB1/4	Natural & Blk.	.750 (19.0)	.700 (17.8)	.590 (14.9)	.700 (17.8)	.630 (16.0)	.510 (13.0)	.460 (11.7)
KN700BA1/4	Blk. & Natural	.750 (19.0)	.700 (17.8)	.590 (14.9)	.700 (17.8)	.630 (16.0)	.510 (13.0)	.460 (11.7)
KN900AB1/4	Natural & Blk.	.940 (23.9)	.880 (22.3)	.710 (18.0)	.800 (22.3)	.630 (16.0)	.510 (13.0)	.460 (11.7)
KN900BA1/4	Blk. & Natural	.940 (23.9)	.880 (22.3)	.710 (18.0)	.800 (22.3)	.630 (16.0)	.510 (13.0)	.460 (11.7)
KN1250AB1/4	Natural & Blk.	1.25 (31.7)	1.20 (30.5)	.980 (24.9)	1.20 (30.5)	.630 (16.0)	.510 (13.0)	.460 (11.7)
KN1250BA1/4	Blk. & Natural	1.25 (31.7)	1.20 (30.5)	.980 (24.9)	1.20 (30.5)	.630 (16.0)	.510 (13.0)	.460 (11.7)

KNS SERIES Solid aluminum with straight knurl and arrowhead indicator on skirt

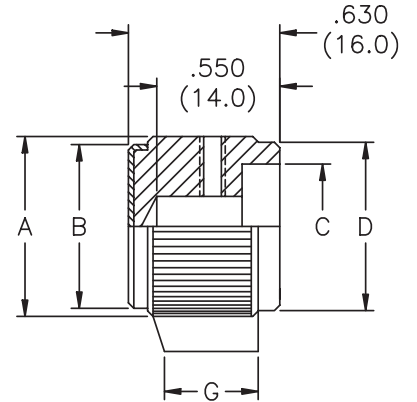
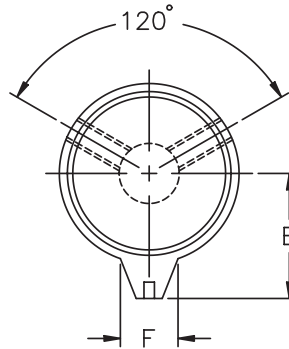


MODEL	COLOR	A	B	C	D	E	F	G
KNS501A1/8	Natural	.500 (12.7)	.450 (11.4)	.380 (9.65)	.750 (19.0)	.630 (16.0)	.510 (13.0)	.430 (10.9)
KNS501A1/4	Natural	.500 (12.7)	.450 (11.4)	.380 (9.65)	.750 (19.0)	.630 (16.0)	.510 (13.0)	.430 (10.9)
KNS501B1/8	Black	.500 (12.7)	.450 (11.4)	.380 (9.65)	.750 (19.0)	.630 (16.0)	.510 (13.0)	.430 (10.9)
KNS501B1/4	Black	.500 (12.7)	.450 (11.4)	.380 (9.65)	.750 (19.0)	.630 (16.0)	.510 (13.0)	.430 (10.9)
KNS701A1/4	Natural	.750 (19.0)	.700 (17.8)	.590 (14.9)	1.13 (28.3)	.630 (16.0)	.510 (13.0)	.430 (10.9)
KNS701B1/4	Black	.750 (19.0)	.700 (17.8)	.590 (14.9)	1.13 (28.3)	.630 (16.0)	.510 (13.0)	.430 (10.9)
TWO-TONED	BODY-TOP-SKIRT							
KNS501BA1/8	Blk. & Natural	.500 (12.7)	.450 (11.4)	.380 (9.65)	.750 (19.0)	.630 (16.0)	.510 (13.0)	.430 (10.9)
KNS501BA1/4	Blk. & Natural	.500 (12.7)	.450 (11.4)	.380 (9.65)	.750 (19.0)	.630 (16.0)	.510 (13.0)	.430 (10.9)
KNS701BA1/8	Blk. & Natural	.750 (19.0)	.700 (17.8)	.590 (14.9)	1.13 (28.3)	.630 (16.0)	.510 (13.0)	.430 (10.9)
KNS701BA1/4	Blk. & Natural	.750 (19.0)	.700 (17.8)	.590 (14.9)	1.13 (28.3)	.630 (16.0)	.510 (13.0)	.430 (10.9)

SPECIFICATIONS SUBJECT TO CHANGE WITHOUT NOTICE.

Notes: Dims. in inches & (millimeters). Shaft size is last 3 digits of Model No.

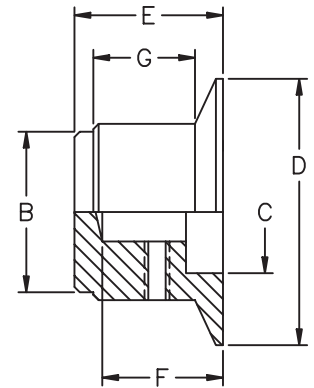
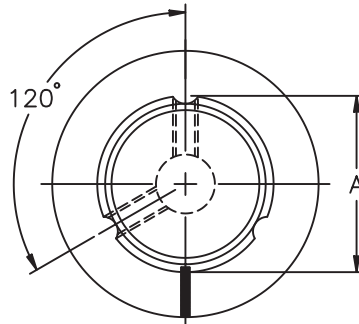
KPN SERIES Solid aluminum with straight knurl and pointer with indicator line on side



SPECIFICATIONS SUBJECT TO CHANGE WITHOUT NOTICE.

MODEL	COLOR (body-top)	A	B	C	D	E	F	G
KPN500A1/8	Natural	.500 (12.7)	.450 (11.4)	.380 (9.65)	.450 (11.4)	.370 (9.40)	.200 (5.08)	.350 (8.89)
KPN500A1/4	Natural	.500 (12.7)	.450 (11.4)	.380 (9.65)	.450 (11.4)	.370 (9.40)	.200 (5.08)	.350 (8.89)
KPN500B1/8	Black	.500 (12.7)	.450 (11.4)	.380 (9.65)	.450 (11.4)	.370 (9.40)	.200 (5.08)	.350 (8.89)
KPN500B1/4	Black	.500 (12.7)	.450 (11.4)	.380 (9.65)	.450 (11.4)	.370 (9.40)	.200 (5.08)	.350 (8.89)
KPN700A1/4	Natural	.750 (19.0)	.700 (17.8)	.590 (15.0)	.700 (17.8)	.520 (13.2)	.240 (6.09)	.390 (9.90)
KPN700B1/4	Black	.750 (19.0)	.700 (17.8)	.590 (15.0)	.700 (17.8)	.520 (13.2)	.240 (6.09)	.390 (9.90)
KPN900A1/4	Natural	.940 (23.9)	.880 (22.3)	.710 (18.0)	.880 (22.3)	.630 (16.0)	.280 (7.11)	.350 (8.89)
KPN900B1/4	Black	.940 (23.9)	.880 (22.3)	.710 (18.0)	.880 (22.3)	.630 (16.0)	.280 (7.11)	.350 (8.89)
KPN500BA1/8	Blk. & Natural	.500 (12.7)	.450 (11.4)	.380 (9.65)	.450 (11.4)	.370 (9.40)	.200 (5.08)	.350 (8.89)
KPN500BA1/4	Blk. & Natural	.500 (12.7)	.450 (11.4)	.380 (9.65)	.450 (11.4)	.370 (9.40)	.200 (5.08)	.350 (8.89)
KPN700AB1/4	Natural & Blk.	.750 (19.0)	.700 (17.8)	.590 (15.0)	.700 (17.8)	.520 (13.2)	.240 (6.09)	.390 (9.90)
KPN700BA1/4	Blk. & Natural	.750 (19.0)	.700 (17.8)	.590 (15.0)	.700 (17.8)	.520 (13.2)	.240 (6.09)	.390 (9.90)
KPN900AB1/4	Natural & Blk.	.940 (23.9)	.880 (22.3)	.710 (18.0)	.880 (22.3)	.630 (16.0)	.280 (7.11)	.350 (8.89)
KPN900BA1/4	Blk. & Natural	.940 (23.9)	.880 (22.3)	.710 (18.0)	.880 (22.3)	.630 (16.0)	.280 (7.11)	.350 (8.89)

KS SERIES Solid aluminum with 3 flute design and line indicator on side and skirt



MODEL	COLOR	A	B	C	D	E	F	G
KS500A1/8	Natural	.500 (12.7)	.430 (10.9)	.380 (9.65)	.750 (19.0)	.630 (16.0)	.510 (12.9)	.430 (10.9)
KS500A1/4	Natural	.500 (12.7)	.430 (10.9)	.380 (9.65)	.750 (19.0)	.630 (16.0)	.510 (12.9)	.430 (10.9)
KS500B1/8	Black	.500 (12.7)	.430 (10.9)	.380 (9.65)	.750 (19.0)	.630 (16.0)	.510 (12.9)	.430 (10.9)
KS500B1/4	Black	.500 (12.7)	.430 (10.9)	.380 (9.65)	.750 (19.0)	.630 (16.0)	.510 (12.9)	.430 (10.9)
KS700A1/4	Natural	.750 (19.0)	.650 (16.5)	.590 (14.9)	1.12 (28.4)	.630 (16.0)	.510 (12.9)	.430 (10.9)
KS700B1/4	Black	.750 (19.0)	.650 (16.5)	.590 (14.9)	1.12 (28.4)	.630 (16.0)	.510 (12.9)	.430 (10.9)
KS900A1/4	Natural	.940 (23.9)	.820 (20.8)	.710 (18.0)	1.40 (35.6)	.630 (16.0)	.510 (12.9)	.430 (10.9)
KS900B1/4	Black	.940 (23.9)	.820 (20.8)	.710 (18.0)	1.40 (35.6)	.630 (16.0)	.510 (12.9)	.430 (10.9)

L

CONTROL KNOBS, MOLDED ABS

FEATURES

- Cosmetic black gloss finish.
- Anti-static plastic.
- Positive retention #6-32 set screws.
- Fits 1/8" dia. & 1/4" dia. shafts.
- Functionally rugged.
- Special designs available.

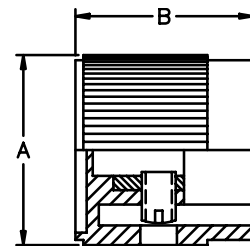
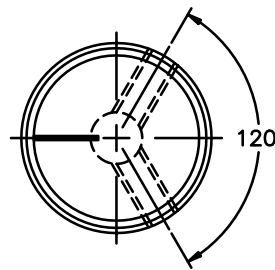
MATERIALS

Knob:
Inlay:
Threaded Insert:
Setscrew:

Custom molded ABS, color black.
Spun aluminum
Brass.
Heat treated high alloy steel with cup point and hex head,
or slotted head. Note: 1 or 2 supplied, depending on model.

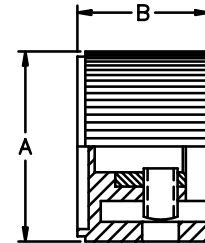
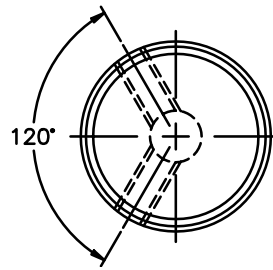
Notes: Dimensions in inches & (millimeters). Shaft size is last 3 digits of Model No.

41012 SERIES Straight knurl with line indicator on top (Top inlay & line or dot indicators available in color - consult factory.)



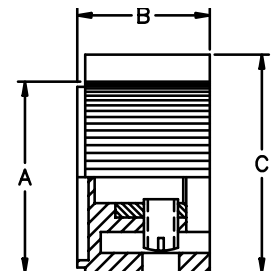
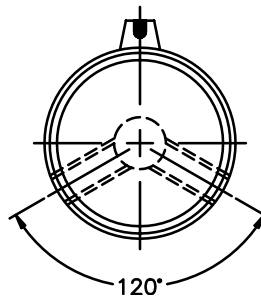
MODEL	A	B
410121B1/8	.520 (13.2)	.640 (16.3)
410121B1/4	.520 (13.2)	.640 (16.3)
410122B1/8	.720 (18.3)	.740 (18.8)
410122B1/4	.720 (18.3)	.740 (18.8)
410123B1/8	.920 (23.4)	.860 (21.8)
410123B1/4	.920 (23.4)	.860 (21.8)

41013 SERIES Straight knurl with no indicator marking (Indicator lines and dots available - consult factory.)



MODEL	A	B
410131B1/8	.520 (13.2)	.480 (12.2)
410131B1/4	.520 (13.2)	.480 (12.2)
410132B1/4	.720 (18.3)	.580 (14.7)
410133B1/4	.920 (23.4)	.640 (16.3)

43021 SERIES Straight knurl pointer with line indicator on pointer side



MODEL	A	B	C
430211B1/8	.504 (12.8)	.480 (12.2)	.610 (15.5)
430211B1/4	.504 (12.8)	.480 (12.2)	.610 (15.5)
430212B1/4	.712 (18.1)	.579 (14.7)	.750 (19.1)
430213B1/4	.906 (23.0)	.642 (16.3)	1.050 (26.7)

SPECIFICATIONS SUBJECT TO CHANGE WITHOUT NOTICE.

CONTROL KNOBS, MOLDED PHENOLIC

FEATURES

- Cosmetic black gloss finish.
- Anti-static plastic.
- Positive retention #6-32 set screws.
- Fits 1/8" dia. & 1/4" dia. shafts.
- Functionally rugged.
- Special designs available.

MATERIALS

Knob:

Custom molded phenolic, color black.

Inlay:

Spun aluminum

Threaded Insert:

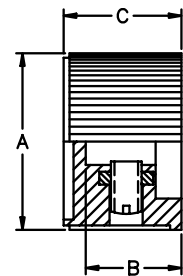
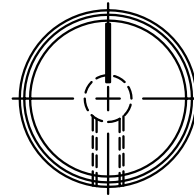
Brass.

Setscrew:

Heat treated high alloy steel with cup point and hex head, or slotted head. Note: 1 or 2 supplied, depending on model.

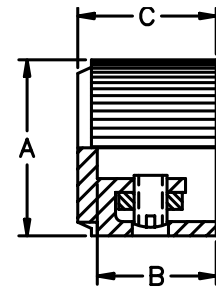
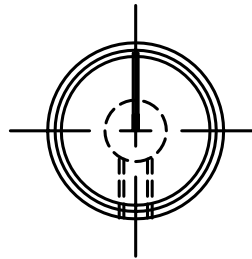
Notes: Dimensions in inches & (millimeters). Shaft size is last 3 digits of Model No.

41001 SERIES Straight knurl line indicator on top



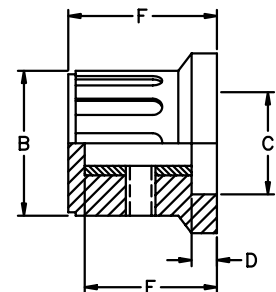
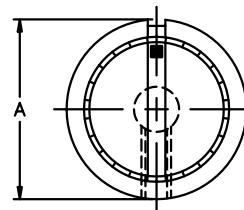
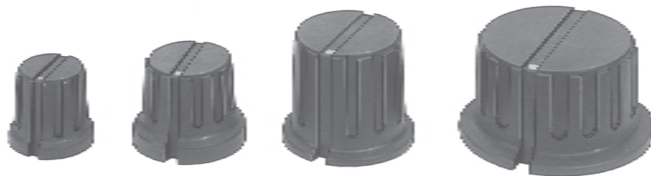
MODEL	A	B	C
410011B1/8	.787 (20.0)	.512 (13.0)	.630 (16.0)
410011B1/4	.787 (20.0)	.512 (13.0)	.630 (16.0)
410012B1/4	.945 (24.0)	.512 (13.0)	.630 (16.0)

41003 SERIES Straight knurl with aluminum cap & line indicator on top



MODEL	A	B	C
410031B1/8	.551 (14.0)	.472 (12.0)	.551 (14.0)
410032B1/4	.716 (18.2)	.496 (12.6)	.555 (14.1)

41004 SERIES Ribbed without inlay with square indicator on top



Note: This series has matte black finish

MODEL	A	B	C	D	E	F
*410041B1/8	.610 (15.5)	.500 (12.7)	.374 (9.5)	.122 (3.1)	.472 (12)	.583 (14.8)
410041B1/4	.610 (15.5)	.500 (12.7)	.374 (9.5)	.122 (3.1)	.472 (12)	.583 (14.8)
410042B1/4	.799 (20.3)	.646 (16.4)	.443 (11.2)	.130 (3.2)	.575 (14.6)	.618 (15.7)
410043B1/4	.953 (24.2)	.772 (19.6)	.551 (14)	.209 (5.3)	.705 (17.9)	.784 (19.9)
**410044B1/4	1.402 (35.6)	1.106 (28.1)	.898 (22.8)	.078 (2.0)	.574 (14.6)	.722 (18.3)

* - This model has one #4-40 set screw.

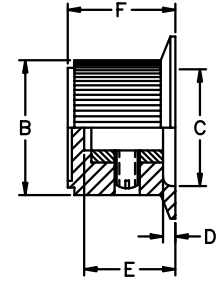
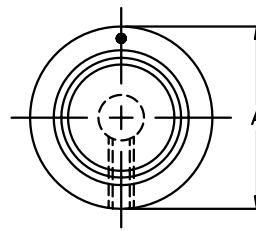
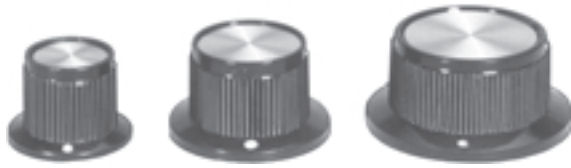
** - This model has two #6-32 set screws 90° apart.

SPECIFICATIONS SUBJECT TO CHANGE WITHOUT NOTICE.

L

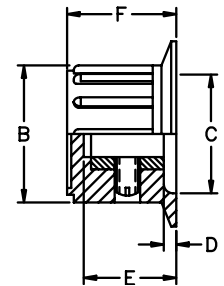
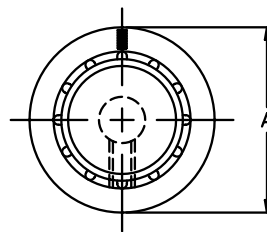
Notes: Dimensions in inches & (millimeters). Shaft size is last 3 digits of Model No.

MPK SERIES Straight knurl with white dot indicator on skirt



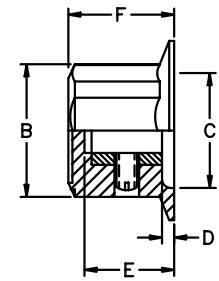
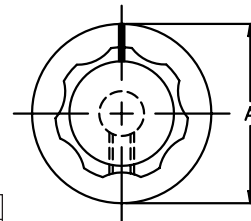
MODEL	A	B	C	D	E	F
MPK50B1/8	.750 (19.0)	.571 (14.5)	.580 (14.7)	.055 (1.4)	.461 (11.7)	.550 (14.0)
MPK50B1/4	.750 (19.0)	.571 (14.5)	.580 (14.7)	.055 (1.4)	.461 (11.7)	.550 (14.0)
MPK70B1/4	1.000 (25.4)	.740 (18.7)	.710 (18.0)	.080 (2.0)	.500 (12.7)	.580 (15.0)
MPK90B1/4	1.250 (31.7)	.988 (25.1)	.870 (22.1)	.090 (2.3)	.460 (11.7)	.590 (15.0)

MPKA SERIES Ribbed with white line indicator on skirt



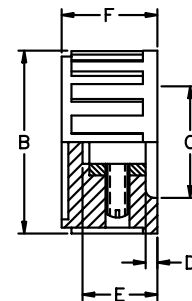
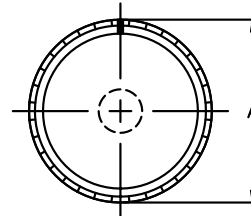
MODEL	A	B	C	D	E	F
MPKA50B1/8	.790 (20.0)	.580 (14.7)	.540 (13.7)	.080 (2.0)	.450 (11.4)	.590 (15.0)
MPKA50B1/4	.790 (20.0)	.580 (14.7)	.540 (13.7)	.080 (2.0)	.450 (11.4)	.590 (15.0)
MPKA70B1/4	.980 (24.9)	.580 (14.7)	.472 (12.0)	.160 (4.0)	.580 (14.7)	.677 (17.2)
MPKA90B1/4	1.360 (34.5)	.960 (24.3)	.680 (17.2)	.200 (5.0)	.740 (18.8)	.850 (21.5)

MPKES SERIES Fluted with white line indicator on side and skirt



MODEL	A	B	C	D	E	F
MPKES60B1/8	.750 (19.0)	.620 (15.7)	.460 (11.6)	.090 (2.3)	.370 (9.4)	.470 (11.9)
MPKES60B1/4	.750 (19.0)	.620 (15.7)	.460 (11.6)	.090 (2.3)	.370 (9.4)	.470 (11.9)
MPKES70B1/4	.850 (21.5)	.750 (19.0)	.710 (18.1)	.080 (2.0)	.420 (10.6)	.540 (13.7)
MPKES90B1/4	1.000 (25.4)	.890 (22.6)	.870 (22.1)	.080 (2.0)	.470 (11.9)	.570 (14.4)
MPKES120B1/4	1.300 (33.0)	1.160 (29.4)	1.000 (25.4)	.120 (3.0)	.500 (12.7)	.630 (16.0)
MPKES140B1/4	1.48 (37.6)	1.35 (34.3)	.120 (3.0)	.120 (3.0)	.550 (13.9)	.690 (17.5)

MPKG SERIES Ribbed with white line indicator on side



MODEL	A	B	C	D	E	F
MPKG40B1/8	.440 (11.1)	.410 (10.4)	.320 (8.1)	.080 (2.0)	.380 (9.7)	.470 (11.9)
MPKG50B1/8	.550 (14.0)	.500 (12.7)	.440 (11.1)	.056 (1.4)	.395 (10.0)	.520 (13.2)
MPKG50B1/4	.550 (14.0)	.500 (12.7)	.440 (11.1)	.056 (1.4)	.395 (10.0)	.520 (13.2)
MPKG60B1/4	.660 (16.7)	.610 (15.5)	.550 (14.0)	.080 (2.0)	.430 (10.9)	.550 (14.0)
MPKG70B1/4	.740 (18.8)	.700 (17.8)	.590 (15.0)	.080 (2.0)	.450 (11.4)	.550 (14.0)
MPKG90B1/4	.860 (21.8)	.810 (20.6)	.720 (18.3)	.080 (2.0)	.410 (10.4)	.550 (14.0)
MPKG100B1/4	1.050 (26.6)	1.000 (25.4)	.920 (23.3)	.080 (2.0)	.430 (10.9)	.550 (14.7)
MPKG125B1/4	1.250 (31.8)	1.200 (30.4)	.690 (17.5)	.080 (2.0)	.430 (10.9)	.580 (14.7)

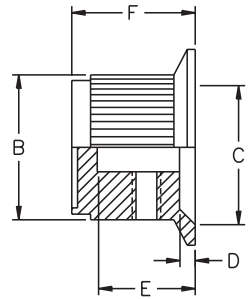
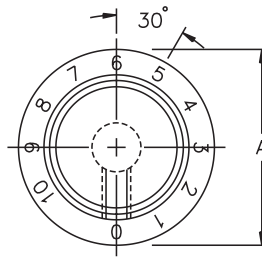
MPKG 90 THRU 125
TWO SET SCREWS

MPKG 40 THRU 70
ONE SET SCREW

SPECIFICATIONS SUBJECT TO CHANGE WITHOUT NOTICE.

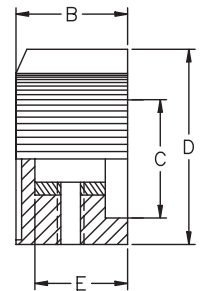
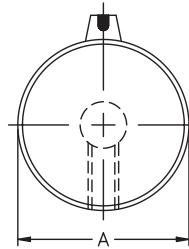
Notes: Dimensions in inches & (millimeters). Shaft size is last 3 digits of Model No.

PKD SERIES Straight knurl with skirt with 0 to 10 numerals



MODEL	A	B	C	D	E	F
PKD60B101/8	.780 (19.8)	.600 (15.2)	.490 (12.4)	.060 (1.53)	.390 (9.91)	.510 (12.9)
PKD60B101/4	.780 (19.8)	.600 (15.2)	.490 (12.4)	.060 (1.53)	.390 (9.91)	.510 (12.9)
PKD70B101/4	1.00 (25.4)	.740 (18.8)	.730 (18.5)	.090 (2.29)	.500 (12.7)	.590 (15.0)
PKD100B101/4	1.29 (32.7)	1.00 (25.4)	.730 (18.5)	.040 (1.01)	.500 (12.7)	.590 (15.0)

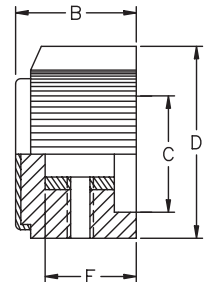
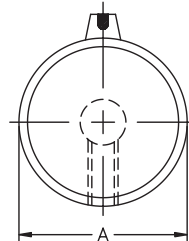
PKJ SERIES Straight knurl with pointer and indicator line on side



MODEL	A	B	C	D	E
PKJ50B1/8	.510 (12.9)	.510 (12.9)	.350 (8.89)	.590 (15.0)	.430 (10.9)
*PKJ50B1/4	.510 (12.9)	.510 (12.9)	.350 (8.89)	.590 (15.0)	.430 (10.9)
PKJ60B1/4	.640 (16.2)	.550 (14.0)	.470 (11.9)	.760 (19.3)	.450 (11.4)
PKJ70B1/4	.760 (19.3)	.550 (14.0)	.550 (14.0)	.910 (23.1)	.450 (11.4)

*- Knob has #4-40 set screw.

PKJT SERIES Straight knurl with pointer and indicator line on side



MODEL	A	B	C	D	E
PKJT50B1/8	.510 (12.9)	.590 (15.0)	.350 (8.89)	.590 (15.0)	.430 (10.9)
*PKJT50B1/4	.510 (12.9)	.590 (15.0)	.350 (8.89)	.590 (15.0)	.430 (10.9)
PKJT60B1/4	.640 (16.2)	.620 (15.7)	.470 (11.9)	.760 (19.3)	.450 (11.4)
PKJT70B1/4	.760 (19.3)	.620 (15.7)	.550 (14.0)	.910 (23.1)	.450 (11.4)

*- Knob has #4-40 set screw.

SPECIFICATIONS SUBJECT TO CHANGE WITHOUT NOTICE.



Компания «Океан Электроники» предлагает заключение долгосрочных отношений при поставках импортных электронных компонентов на взаимовыгодных условиях!

Наши преимущества:

- Поставка оригинальных импортных электронных компонентов напрямую с производств Америки, Европы и Азии, а так же с крупнейших складов мира;
- Широкая линейка поставок активных и пассивных импортных электронных компонентов (более 30 млн. наименований);
- Поставка сложных, дефицитных, либо снятых с производства позиций;
- Оперативные сроки поставки под заказ (от 5 рабочих дней);
- Экспресс доставка в любую точку России;
- Помощь Конструкторского Отдела и консультации квалифицированных инженеров;
- Техническая поддержка проекта, помощь в подборе аналогов, поставка прототипов;
- Поставка электронных компонентов под контролем ВП;
- Система менеджмента качества сертифицирована по Международному стандарту ISO 9001;
- При необходимости вся продукция военного и аэрокосмического назначения проходит испытания и сертификацию в лаборатории (по согласованию с заказчиком);
- Поставка специализированных компонентов военного и аэрокосмического уровня качества (Xilinx, Altera, Analog Devices, Intersil, Interpoint, Microsemi, Actel, Aeroflex, Peregrine, VPT, Syfer, Eurofarad, Texas Instruments, MS Kennedy, Miteq, Cobham, E2V, MA-COM, Hittite, Mini-Circuits, General Dynamics и др.);

Компания «Океан Электроники» является официальным дистрибьютором и эксклюзивным представителем в России одного из крупнейших производителей разъемов военного и аэрокосмического назначения «JONHON», а так же официальным дистрибьютором и эксклюзивным представителем в России производителя высокотехнологичных и надежных решений для передачи СВЧ сигналов «FORSTAR».



JONHON

«JONHON» (основан в 1970 г.)

Разъемы специального, военного и аэрокосмического назначения:

(Применяются в военной, авиационной, аэрокосмической, морской, железнодорожной, горно- и нефтедобывающей отраслях промышленности)

«FORSTAR» (основан в 1998 г.)

ВЧ соединители, коаксиальные кабели, кабельные сборки и микроволновые компоненты:

(Применяются в телекоммуникациях гражданского и специального назначения, в средствах связи, РЛС, а так же военной, авиационной и аэрокосмической отраслях промышленности).



Телефон: 8 (812) 309-75-97 (многоканальный)

Факс: 8 (812) 320-03-32

Электронная почта: ocean@oceanchips.ru

Web: <http://oceanchips.ru/>

Адрес: 198099, г. Санкт-Петербург, ул. Калинина, д. 2, корп. 4, лит. А