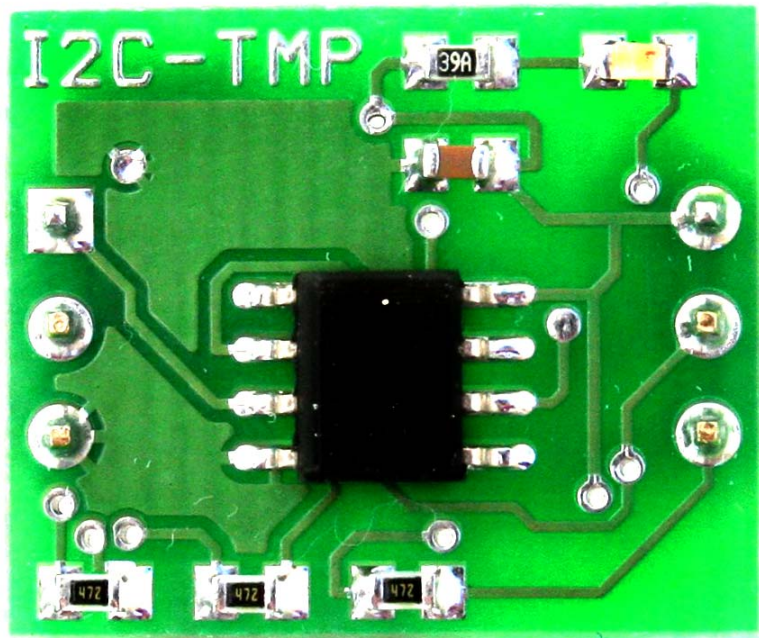


I2C-TMP™ I<sup>2</sup>C 12-Bit Digital Temperature Sensor  
User Manual

# GRAVITECH.US



# *uResearch*

## GRAVITECH GROUP

Copyright © 2007 MicroResearch  
GRAVITECH GROUP    [WWW.GRAVITECH.US](http://WWW.GRAVITECH.US)

# I2C-TMP™ I<sup>2</sup>C 12-Bit Digital Temperature Sensor User Manual

## Description

The I2C-TMP board is a 6-pin CMOS 12-bit digital temperature sensor device using I<sup>2</sup>C bus. There are no external components required. Only two signal lines SDA and SCL plus supply voltage and ground are required to be connected. This makes it perfect for embedded systems that require temperature measurement.

This board features innovations that set it apart from other temperature sensor module. Innovations feature like on-board I<sup>2</sup>C address jumpers, pull-up resistors, and power LED. The module can be quickly connected directly on to the breadboard. The board is small and compact in size 0.70 x 0.60 inches.

The I2C-TMP is designed base on TMP175 IC. It is digital temperature sensors that are optimal for thermal management and thermal protection applications. The device is specified over a temperature range of -40°C to +125°C.

The sensing device is the chip itself. Thermal paths run through the package leads as well as the plastic package. The lower thermal resistance of metal causes the leads to provide the primary thermal path.

A jumper pins vary the fixed I<sup>2</sup>C address and allow up to 27 devices to share the same I<sup>2</sup>C bus.

## Features

- 27 addresses
- Resolution: 9- to 12-bit, user-selectable
- Accuracy:  
+/- 1.5°C (max) from -25°C to +85°C  
+/- 2.0°C (max) from -40°C to +125°C
- Stand alone module, no external components required
- On-board I<sup>2</sup>C address jumpers, pull-up resistors and power LED
- Decoupling supply voltage
- Design easy for breadboard
- High quality double sided PCB
- All SMT components
- Small and compact in size 1.50 x 2.05 inches
- Dual row 0.6" width, 0.1" pitch header pins
- Flexible operating power supply voltage range of 2.7V to 5.5V
- Suitable for 3.3V or 5.0V microcontroller

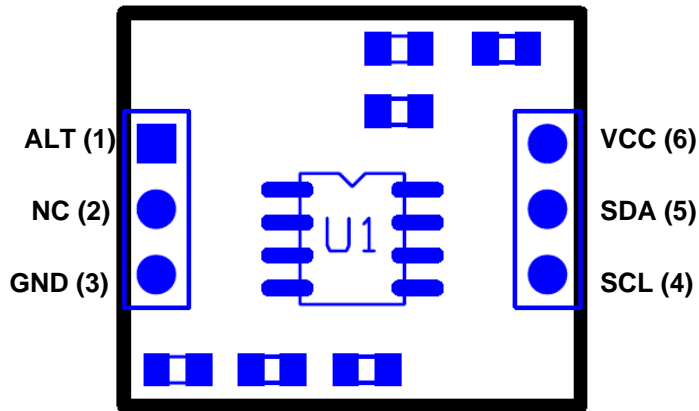
## Applications

- Power supply temperature monitoring
- Thermal management
- Thermal protection
- Thermostat controls
- Environmental monitoring
- Electromechanical device temperature
- And much more...

\* I<sup>2</sup>C is a trademark of Philips Semiconductors Corporation.

# I2C-TMP™ I<sup>2</sup>C 12-Bit Digital Temperature Sensor User Manual

## Pin Configuration



Pin No.	Name	Type	Description
1	ALT	Output	Alert output
2	NC	NC	No connect
3	GND	PWR	Supply ground
4	SCL	Input	Serial clock line
5	SDA	I/O	Serial data line
6	VCC	PWR	Supply voltage

## Interfaces

### Power:

The I2C-TMP board needs an external 2.7VDC – 5.5VDC supply.

- **VCC:** is an input power 2.7VDC – 5.5VDC to I2C-TMP board.
- **GND:** is a common ground for every pin. This pin **MUST** be connected to ground of the external power supply.

### I<sup>2</sup>C pins:

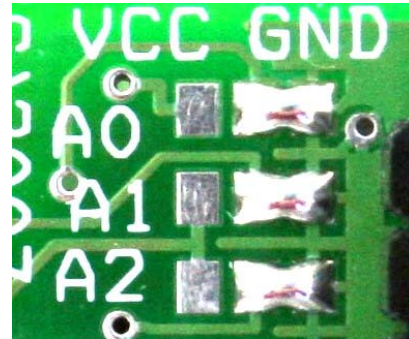
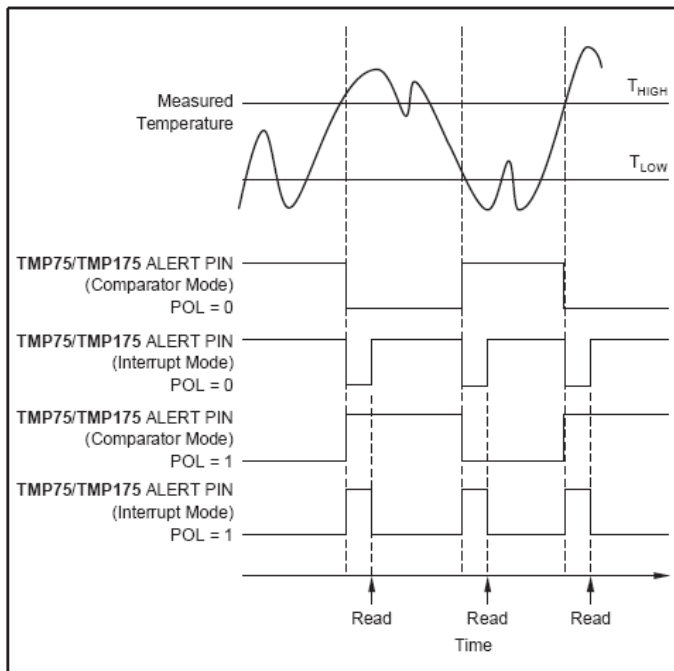
The I2C-TMP operates as a slave on the I<sup>2</sup>C bus. Only two signal lines SDA and SCL are required for I<sup>2</sup>C bus. Please refer to I<sup>2</sup>C specification for more information.

### ALT pin:

In Interrupt Mode: alert pin is active when the temperature is above or below user settable trip points ( $T_{HIGH}$  and  $T_{LOW}$ ). It is software selectable for active HIGH or LOW.

# I2C-TMP™ I<sup>2</sup>C 12-Bit Digital Temperature Sensor User Manual

In Comparator Mode: the ALERT pin becomes active when the temperature equals or exceeds the value in  $T_{HIGH}$  and generates a consecutive number of faults according to fault bits F1 and F0. The ALERT pin will remain active until the temperature falls below the indicated  $T_{LOW}$  value for the same number of faults.



The I2C-TMP features three address pins to allow up to 27 devices to be addressed on a single bus interface. Table below describes the pin logic levels used to properly connect up to 27 devices.

**'1'** indicates solder a bridge from the middle pad to VCC.

**'0'** indicates solder a bridge from middle pad to GND.

**'Float'** indicates no solder bridge to any pads.

## Module Configuration

### I<sup>2</sup>C address:

Default address shipped from the manufacture is 0x90.

A0 = GND  
A1 = GND  
A2 = GND

# I2C-TMP™ I<sup>2</sup>C 12-Bit Digital Temperature Sensor User Manual

A2	A1	A0	SLAVE ADDRESS
0	0	0	1001000
0	0	1	1001001
0	1	0	1001010
0	1	1	1001011
1	0	0	1001100
1	0	1	1001101
1	1	0	1001110
1	1	1	1001111
Float	0	0	1110000
Float	0	Float	1110001
Float	0	1	1110010
Float	1	0	1110011
Float	1	Float	1110100
Float	1	1	1110101
Float	Float	0	1110110
Float	Float	1	1110111
0	Float	0	0101000
0	Float	1	0101001
1	Float	0	0101010
1	Float	1	0101001
0	0	Float	0101100
0	1	Float	0101101
1	0	Float	0101110
1	1	Float	0101111
0	Float	Float	0110101
1	Float	Float	0110110
Float	Float	Float	0110111

## Power-on LED:

The green LED on the module is illuminating when the power applied. The power-on LED is enabled from the manufacture. It can be disabling for light sensitive or low current requirement application by remove the solder bridge on "LD" at the bottom of the module.



## I<sup>2</sup>C pull-up resistors:

I<sup>2</sup>C bus specification required to have pull-up resistors on SDA and SCL pin. I2C-TMP come with these two pull-up resistors enabled from the manufacture. It can be disabling when connect to I<sup>2</sup>C bus that already have pull-up resistors by remove the solder bridge on the "SPU" at the bottom of the module.



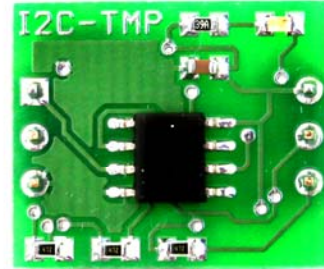
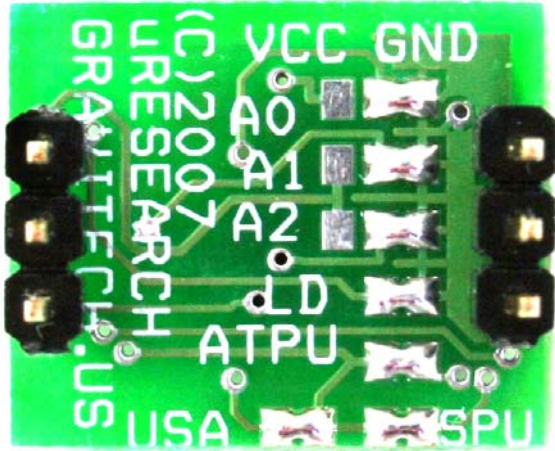
## Alert pull-up resistors:

ALT pin is required to have a pull-up resistor. I2C-TMP come with this pull-up resistor enabled from the manufacture. It can be disabling by remove the solder bridge on the "ATPU" at the bottom of the module.



# I2C-TMP™ I<sup>2</sup>C 12-Bit Digital Temperature Sensor User Manual

Below are the default settings from the manufacture.



**uResearch**

© 2007 Copyright, All Rights Reserved



**uResearch**

© 2007 Copyright, All Rights Reserved



**uResearch**

© 2007 Copyright, All Rights Reserved

**Copyright © 2007 MicroResearch**  
GRAVITECH GROUP WWW.GRAVITECH.US

# I2C-TMP™ I<sup>2</sup>C 12-Bit Digital Temperature Sensor User Manual

## Notes

## Contact Us

We maintain a website where you can get information on our products, obtain literature and download support files. Visit us online at:

**[WWW.GRAVITECH.US](http://WWW.GRAVITECH.US)**

Use our online Forum or e-mail your technical support questions to [support@gravitech.us](mailto:support@gravitech.us). We try to respond to your questions the same day.

For sales questions or to place and order, direct your e-mails to [sales@gravitech.us](mailto:sales@gravitech.us). Refer to our website for product pricing, shipping rates, payment instructions, and for other info we need to complete your order.

**Disclaimer: MicroResearch reserves the right to modify its products or literature, or to discontinue any product at any time without prior notice. The customer is responsible for determining the suitability of any device for any application developed using MicroResearch components.**

**Copyright © 2007 MicroResearch**  
GRAVITECH GROUP      WWW.GRAVITECH.US

Компания «Океан Электроники» предлагает заключение долгосрочных отношений при поставках импортных электронных компонентов на взаимовыгодных условиях!

Наши преимущества:

- Поставка оригинальных импортных электронных компонентов напрямую с производств Америки, Европы и Азии, а так же с крупнейших складов мира;
- Широкая линейка поставок активных и пассивных импортных электронных компонентов (более 30 млн. наименований);
- Поставка сложных, дефицитных, либо снятых с производства позиций;
- Оперативные сроки поставки под заказ (от 5 рабочих дней);
- Экспресс доставка в любую точку России;
- Помощь Конструкторского Отдела и консультации квалифицированных инженеров;
- Техническая поддержка проекта, помощь в подборе аналогов, поставка прототипов;
- Поставка электронных компонентов под контролем ВП;
- Система менеджмента качества сертифицирована по Международному стандарту ISO 9001;
- При необходимости вся продукция военного и аэрокосмического назначения проходит испытания и сертификацию в лаборатории (по согласованию с заказчиком);
- Поставка специализированных компонентов военного и аэрокосмического уровня качества (Xilinx, Altera, Analog Devices, Intersil, Interpoint, Microsemi, Actel, Aeroflex, Peregrine, VPT, Syfer, Eurofarad, Texas Instruments, MS Kennedy, Miteq, Cobham, E2V, MA-COM, Hittite, Mini-Circuits, General Dynamics и др.);

Компания «Океан Электроники» является официальным дистрибьютором и эксклюзивным представителем в России одного из крупнейших производителей разъемов военного и аэрокосмического назначения «JONHON», а так же официальным дистрибьютором и эксклюзивным представителем в России производителя высокотехнологичных и надежных решений для передачи СВЧ сигналов «FORSTAR».



## JONHON

«JONHON» (основан в 1970 г.)

Разъемы специального, военного и аэрокосмического назначения:

(Применяются в военной, авиационной, аэрокосмической, морской, железнодорожной, горно- и нефтедобывающей отраслях промышленности)

«FORSTAR» (основан в 1998 г.)

ВЧ соединители, коаксиальные кабели, кабельные сборки и микроволновые компоненты:

(Применяются в телекоммуникациях гражданского и специального назначения, в средствах связи, РЛС, а так же военной, авиационной и аэрокосмической отраслях промышленности).



Телефон: 8 (812) 309-75-97 (многоканальный)

Факс: 8 (812) 320-03-32

Электронная почта: [ocean@oceanchips.ru](mailto:ocean@oceanchips.ru)

Web: <http://oceanchips.ru/>

Адрес: 198099, г. Санкт-Петербург, ул. Калинина, д. 2, корп. 4, лит. А