

DS650/DS850

650 / 850 Watts

Distributed Power System

Distributed Power Bulk Front-End

Total Input Power: 650/850 Watts
+3.3 Vdc Stand-by Output

Wide Range Output Voltage: 90 - 264Vac
12, 24 and 48V



Electrical Specifications

| Input | |
|-----------------------|--|
| Input range | 90 - 264 Vac (wide range) |
| Frequency | 47 - 63 Hz, single phase AC |
| Inrush current | 55 A maximum inrush current |
| Efficiency | > 82% typical at full load, high line |
| Conducted EMI | FCC Subpart J EN55022 Class B |
| Radiated EMI | FCC Subpart J EN55022 Class B |
| Power factor | 0.99 typical |
| Leakage current | 1.40 mA @ 240 Vac |
| Hold up time | 20ms minimum |
| Output | |
| Main DC voltage | +12 V @ 52.5 A/70.0 A +24 V @ 26.3 A / 35.0 A +48 V @ 13.1 A / 17.5 A |
| Stand-By | +3.3 vsb @ 6 A (5 V @ 4 A available) |
| Adjustment range | Factory Set, no pot adjustments |
| Regulation | Main output; +5%/-5% +3.3 vsb; +5%/-5% |
| Over current | 110% - 150% of nominal Latches off if overcurrent lasts over 1 second, otherwise it is auto recovery. +3.3 vsb, 9 A max (hiccup mode) |
| Over voltage | 110% - 120% of nominal +3.3 vsb; 3.76 - 4.30 Vdc |
| Under voltage | 75% - 90% of nominal |
| Turn-on delay | 2 Second max, 5 - 50 mS, Monotonic Rise |
| Main output rise time | 5 - 50 mS, Monotonic Rise |

Special Features

- Active power factor correction
- EN61000-3-2 harmonic compliance
- Active AC inrush control
- 1U X 2U form factor
- 15.4 W/ in³
- 12 Vdc, 24 Vdc and 48 Vdc output
- +3.3 Vdc stand-by (5V standby - consult factory)
- No minimum load required
- Hot plug operation
- N + 1 redundant
- Internal OR'ing fets
- Active current sharing (10 - 100% load)
- Built-in cooling fans (40mm x 28mm)
- I²C communication interface bus
- EERPOM for FRU data
- Red/Green bi-color LED status
- Internal fan speed control
- Fan Fail Tach output signal
- INTEL, SSI Std. logic timing
- INTEL, SSI Std. FRU data format
- One year warranty

Safety

UL/cUL 60950 (UL Recognized)
NEMKO+ CB Report EN60950
EN60950
CE Mark
China CCC



| Logic Control | |
|--------------------|---|
| PS_SEATED | TTL logic LOW if power supply is seated into system connector. This is a short pin. A logic HIGH if the PSU is removed. |
| PWR GOOD | Active TTL HIGH when output is within regulation limits. |
| AC OK | A LOW logic level if the input voltage is within allowable limits. A TTL logic HIGH level, and a 5mS early warning signal before main output loss of regulation. |
| Temp OK | A TTL logic HIGH, when operating within allowable temperature range. |
| PS_INHIBIT/PS_KILL | This signal is connected to a short pin on the PSU When left open power supply operation will be inhibited. When the power supply is inserted into the system, this pin will be pull low by the system and turn the power supply on only after all other power supply pins have seated. |

Environmental Specifications

| | |
|--|---|
| Operating temperature: | -10° to 50°C ; 50% power derating at 70°C |
| Storage temperature: | -40°C to +85°C |
| Altitude, operating 10,000ft. | |
| Electromagnetic susceptibility / Input transients: | -EN61000-3-2, -3-3 -EN61000-4-2, 4.3, 4-4, -4-5, 4-11 Level -EN55024:1998 |
| RoHS & lead-free compliant (no tantalum caps.) | |
| Humidity: | 20 to 90% RH, non-condensing |
| Shock and vibration specifications | complies with Astec Std. Specifications, Q3205 |
| MTBF (Demonstrated) | 500K Hrs at full load, 40°C |

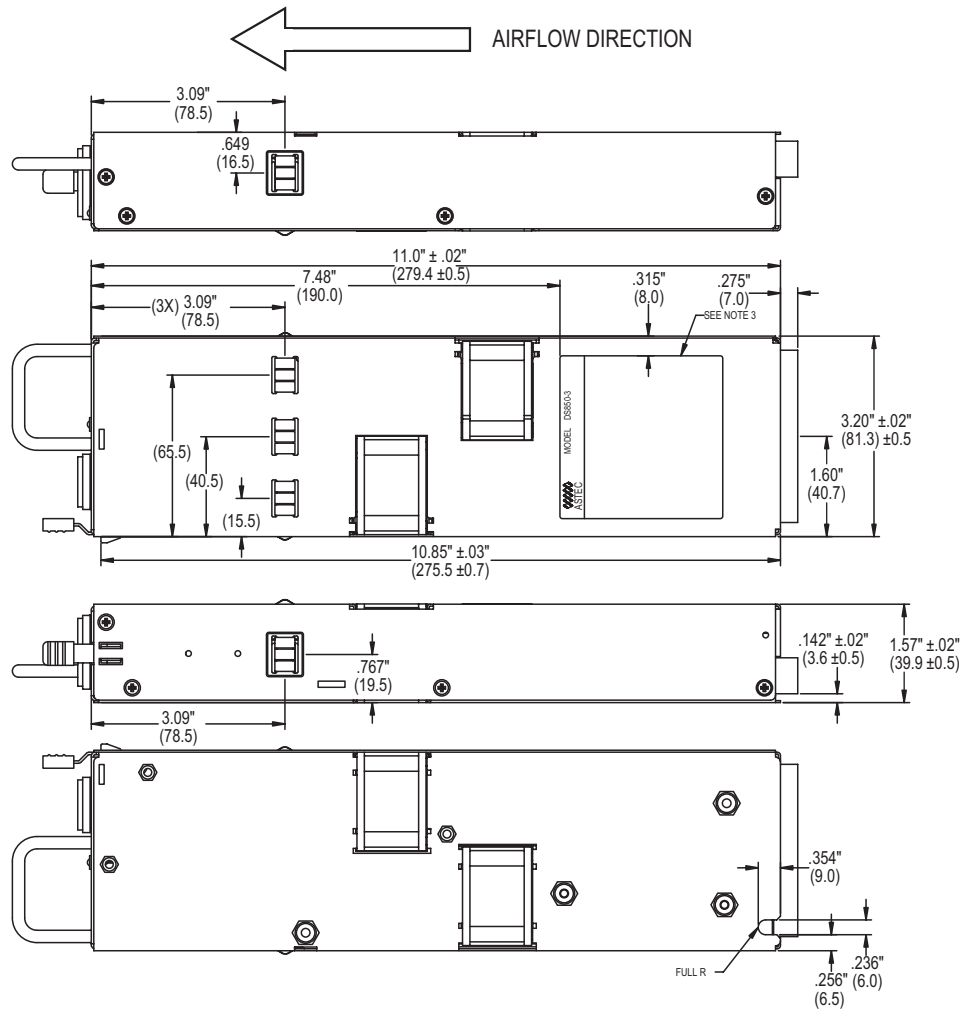
Ordering Information

| Output | Nominal Output Voltage Set Point | Set Point Tolerance | Total Regulation | Minimum Current | Maximum Current | Output Ripple P/P |
|---------|----------------------------------|---------------------|------------------|-----------------|-----------------|-------------------|
| DS650-3 | 12.0 Vdc 3.3 vsb* | ±0.2% ±1% | ±5% ±5% | 0A 0A | 52.5 A 6.0 A | 120 mV 50 mV |
| DS650-5 | 24.0 Vdc 3.3 vsb* | ±0.2% ±1% | ±5% ±5% | 0A 0A | 26.3 A 6.0 A | 240 mV 50 mV |
| DS650-9 | 48.0 Vdc 3.3 vsb* | ±0.2% ±1% | ±5% ±5% | 0A 0A | 13.1 A 6.0 A | 480 mV 50 mV |
| DS850-3 | 12.0 Vdc 3.3 vsb* | ±0.2% ±1% | ±5% ±5% | 0A 0A | 70.0 A 6.0 A | 120 mV 50 mV |
| DS850-5 | 24.0 Vdc 3.3 vsb* | ±0.2% ±1% | ±5% ±5% | 0A 0A | 35.0 A 6.0 A | 240 mV 50 mV |
| DS850-9 | 48.0 Vdc 3.3 vsb* | ±0.2% ±1% | ±5% ±5% | 0A 0A | 17.5 A 6.0 A | 480 mV 50 mV |

*For 5 vsb, consult marketing.

Mechanical Drawing

| Power Supply Condition | LED Green/Amber |
|---|-----------------|
| No AC power to all PSU | OFF |
| AC present/Standby output ON, Main output OFF | Blinking Green |
| Power supply DC outputs ON and OK | Solid Green |
| Main output failure (OCP, OVP, UVP) | Blinking Amber |
| Fan Fail, OTP, Standby output OCP/UVP | Solid Amber |



DC Output Connector Pinout Assignment

Male connector as viewed from the rear of the supply:

| | | | | | | | | | | | |
|----|----|----|----|----|----|-----|-----|-----|-----|-----|-----|
| D1 | D2 | D3 | D4 | D5 | D6 | | | | | | |
| C1 | C2 | C3 | C4 | C5 | C6 | PB1 | PB2 | PB3 | PB4 | PB5 | PB6 |
| B1 | B2 | B3 | B4 | B5 | B6 | | | | | | |
| A1 | A2 | A3 | A4 | A5 | A6 | | | | | | |

P1 - Power Supply Side

1. FCI Power Blade 51721 series
51721-10002406AA

2. Molex Power Connector
SD-87667 series
87667-7002

Mating Connector (System side)

1. FCI Power Blade
51741-10002406CC
Strait Pins

2. FCI Power Blade
51761-10002406AA
Right Angle

| Pin | Signal Name |
|------|----------------------------------|
| PB 1 | MAIN O/P RETURN |
| PB 2 | MAIN O/P RETURN |
| PB 3 | MAIN O/P RETURN |
| PB 4 | + MAIN O/P |
| PB 5 | + MAIN O/P |
| PB 6 | + MAIN O/P |
| A1 | PS_ON |
| A2 | MAIN O/P V RMT SENSE RETURN |
| A3 | TEMP_OK |
| A4 | PS_SEATED (Power Supply Seated) |
| A5 | +3V3 STAND-BY |
| A6 | +3V3SB RETURN |
| B1 | AC_OK (AC Input Present) |
| B2 | MAIN O/P RMT SENSE |
| B3 | MAIN O/P CURRENT SHARE |
| B4 | PS_INHIBIT |
| B5 | +3V3 STAND-BY |
| B6 | +3V3SB RETURN |
| C1 | SDA (I2C Data Signal) |
| C2 | SCL (I2C Clock Signal)* |
| C3 | POWER GOOD |
| C4 | FAN FAIL (Fan Fail Signal) |
| C5 | +3V3 STAND-BY |
| C6 | +3V3SB RETURN |
| D1 | A0 (I2C Address BIT 0 Signal) |
| D2 | A1 (I2C Address BIT 1 Signal) |
| D3 | S_INT (Alarm) |
| D4 | +3V3 STAND-BY RMT SENSE |
| D5 | +3V3 STAND-BY |
| D6 | +3V3SB RETURN |

*Supports I²C standard mode (100 kHz) only

Americas

5810 Van Allen Way
Carlsbad, CA 92008
USA
Telephone: +1 760 930 4600
Facsimile: +1 760 930 0698

Europe (UK)

Waterfront Business Park
Merry Hill, Dudley
West Midlands, DY5 1LX
United Kingdom
Telephone: +44 (0) 1384 842 211
Facsimile: +44 (0) 1384 843 355

Asia (HK)

14/F, Lu Plaza
2 Wing Yip Street
Kwun Tong, Kowloon
Hong Kong
Telephone: +852 2176 3333
Facsimile: +852 2176 3888

For global contact, visit:

www.Emerson.com/EmbeddedPower
techsupport.embeddedpower@emerson.com

While every precaution has been taken to ensure accuracy and completeness in this literature, Emerson Network Power assumes no responsibility, and disclaims all liability for damages resulting from use of this information or for any errors or omissions.

Emerson Network Power.
The global leader in enabling
business-critical continuity.

- AC Power
- Connectivity
- DC Power
- Embedded Computing
- **Embedded Power**
- Monitoring
- Outside Plant
- Power Switching & Controls
- Precision Cooling
- Racks & Integrated Cabinets
- Services
- Surge Protection

EmersonNetworkPower.com

Emerson Network Power and the Emerson Network Power logo are trademarks and service marks of Emerson Electric Co.
©2011 Emerson Electric Co.

Компания «Океан Электроники» предлагает заключение долгосрочных отношений при поставках импортных электронных компонентов на взаимовыгодных условиях!

Наши преимущества:

- Поставка оригинальных импортных электронных компонентов напрямую с производств Америки, Европы и Азии, а так же с крупнейших складов мира;
- Широкая линейка поставок активных и пассивных импортных электронных компонентов (более 30 млн. наименований);
- Поставка сложных, дефицитных, либо снятых с производства позиций;
- Оперативные сроки поставки под заказ (от 5 рабочих дней);
- Экспресс доставка в любую точку России;
- Помощь Конструкторского Отдела и консультации квалифицированных инженеров;
- Техническая поддержка проекта, помощь в подборе аналогов, поставка прототипов;
- Поставка электронных компонентов под контролем ВП;
- Система менеджмента качества сертифицирована по Международному стандарту ISO 9001;
- При необходимости вся продукция военного и аэрокосмического назначения проходит испытания и сертификацию в лаборатории (по согласованию с заказчиком);
- Поставка специализированных компонентов военного и аэрокосмического уровня качества (Xilinx, Altera, Analog Devices, Intersil, Interpoint, Microsemi, Actel, Aeroflex, Peregrine, VPT, Syfer, Eurofarad, Texas Instruments, MS Kennedy, Miteq, Cobham, E2V, MA-COM, Hittite, Mini-Circuits, General Dynamics и др.);

Компания «Океан Электроники» является официальным дистрибьютором и эксклюзивным представителем в России одного из крупнейших производителей разъемов военного и аэрокосмического назначения «JONHON», а так же официальным дистрибьютором и эксклюзивным представителем в России производителя высокотехнологичных и надежных решений для передачи СВЧ сигналов «FORSTAR».



JONHON

«JONHON» (основан в 1970 г.)

Разъемы специального, военного и аэрокосмического назначения:

(Применяются в военной, авиационной, аэрокосмической, морской, железнодорожной, горно- и нефтедобывающей отраслях промышленности)

«FORSTAR» (основан в 1998 г.)

ВЧ соединители, коаксиальные кабели,
кабельные сборки и микроволновые компоненты:

(Применяются в телекоммуникациях гражданского и специального назначения, в средствах связи, РЛС, а так же военной, авиационной и аэрокосмической отраслях промышленности).



Телефон: 8 (812) 309-75-97 (многоканальный)

Факс: 8 (812) 320-03-32

Электронная почта: ocean@oceanchips.ru

Web: <http://oceanchips.ru/>

Адрес: 198099, г. Санкт-Петербург, ул. Калинина, д. 2, корп. 4, лит. А