

STAMPED AND FORMED CONTACTS, PG 1 of 2

Click on [blue underlined part numbers](#) to be taken to their spec sheets.

OPTIONS

PART NUMBER: [AT62-14-01XX](#)
DESCRIPTION: CONTACT, SOCKET, STAMPED, SIZE 16

MATERIAL:
 CONTACT BODY: COPPER ALLOY
 HOOD: STAINLESS STEEL
PLATING SUFFIX CODE:
 XX=22 NICKEL PLATING
 XX=44 GOLD PLATING
CONTACT GENERAL DATA SPECIFICATION: S2-15217
AVAILABLE CRIMPERS: ATT-16-00, MFX-3950 & MFX-3953
CRIMPER SPECIFICATIONS: S2-15223 & S2-15224
CRIMP INFORMATION DRAWING: S2-15221 & S2-15222
CONTACTS PER REEL: APPROX. 4000 (PARTIAL REELS AVAILABLE)



PART NUMBER: [AT62-16-01XX](#)
DESCRIPTION: CONTACT, SOCKET, STAMPED, SIZE 16

MATERIAL:
 CONTACT BODY: COPPER ALLOY
 HOOD: STAINLESS STEEL
PLATING SUFFIX CODE:
 XX=22 NICKEL PLATING
 XX=44 GOLD PLATING
CONTACT GENERAL DATA SPECIFICATION: S2-15217
AVAILABLE CRIMPERS: ATT-16-00, ATT-16-01, MFX-3950 & MFX-3953
CRIMPER SPECIFICATIONS: S2-15223 & S2-15224
CRIMP INFORMATION DRAWING: S2-15221 & S2-15222
CONTACTS PER REEL: APPROX. 4000 (PARTIAL REELS AVAILABLE)



PART NUMBER: [AT62-16-06XX](#)
DESCRIPTION: CONTACT, SOCKET, STAMPED, SIZE 16

MATERIAL:
 CONTACT BODY: COPPER ALLOY
 HOOD: STAINLESS STEEL
PLATING SUFFIX CODE:
 XX=22 NICKEL PLATING
 XX=44 GOLD PLATING
CONTACT GENERAL DATA SPECIFICATION: S2-15217
AVAILABLE CRIMPERS: ATT-16-01, MFX-3950 & MFX-3953
CRIMPER SPECIFICATIONS: S2-15223 & S2-15224
CRIMP INFORMATION DRAWING: S2-15221 & S2-15222
CONTACTS PER REEL: APPROX. 4000 (PARTIAL REELS AVAILABLE)



PART NUMBER: [AT60-14-01XX](#)
DESCRIPTION: CONTACT, PIN, STAMPED, SIZE 16

MATERIAL: COPPER ALLOY
PLATING SUFFIX CODE:
 XX=22 NICKEL PLATING
 XX=44 GOLD PLATING
CONTACT GENERAL DATA SPECIFICATION: S2-15217
AVAILABLE CRIMPERS: ATT-16-00, MFX-3950 & MFX-3953
CRIMPER SPECIFICATIONS: S2-15223 & S2-15224
CRIMP INFORMATION DRAWING: S2-15221 & S2-15222
CONTACTS PER REEL: APPROX. 4000 (PARTIAL REELS AVAILABLE)

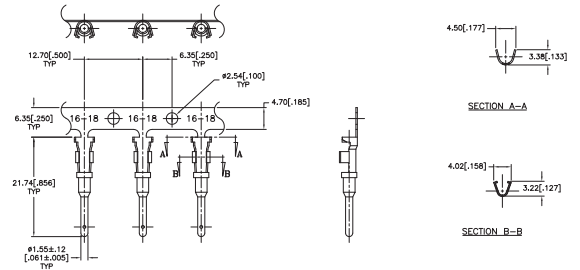


STAMPED AND FORMED CONTACTS, PG 2 of 2

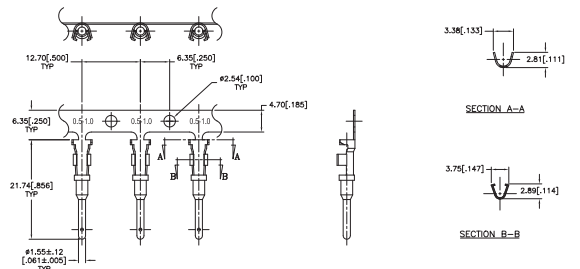
Click on [blue underlined part numbers](#) to be taken to their spec sheets.

OPTIONS

PART NUMBER: [AT60-16-01XX](#)
DESCRIPTION: CONTACT, PIN, STAMPED, SIZE 16
MATERIAL: COPPER ALLOY
PLATING SUFFIX CODE:
 XX=22 NICKEL PLATING
 XX=44 GOLD PLATING
CONTACT GENERAL DATA SPECIFICATION: S2-15217
AVAILABLE CRIMPERS: ATT-16-00, ATT-16-01, MFX-3950 & MFX-3953
CRIMPER SPECIFICATIONS: S2-15223 & S2-15224
CRIMP INFORMATION DRAWING: S2-15221 & S2-15222
CONTACTS PER REEL: APPROX. 4000 (PARTIAL REELS AVAILABLE)



PART NUMBER: [AT60-16-06XX](#)
DESCRIPTION: CONTACT, PIN, STAMPED, SIZE 16
MATERIAL: COPPER ALLOY
PLATING SUFFIX CODE:
 XX=22 NICKEL PLATING
 XX=44 GOLD PLATING
CONTACT GENERAL DATA SPECIFICATION: S2-15217
AVAILABLE CRIMPERS: ATT-16-01, MFX-3950 & MFX-3953
CRIMPER SPECIFICATIONS: S2-15223 & S2-15224
CRIMP INFORMATION DRAWING: S2-15221 & S2-15222
CONTACTS PER REEL: APPROX. 4000 (PARTIAL REELS AVAILABLE)



SOLID/MACHINED CONTACTS

Click on [blue underlined part numbers](#) to be taken to their spec sheets.

OPTIONS

MILITARY-STYLE

PART NUMBER: [AT60-202-16XX](#)
DESCRIPTION: CONTACT, PIN, SOLID MACHINED, SIZE 16
MATERIAL: COPPER ALLOY
PLATING SUFFIX CODE:
 XX=141 NICKEL PLATING
 XX=31 GOLD PLATING
CONTACT GENERAL DATA SPECIFICATION: S2-15217
AVAILABLE CRIMPERS: CA-5D12 & CA-5E12
CRIMPER SPECIFICATIONS: S2-15219 & S2-15220
CRIMP INFORMATION DRAWING: S2-15218

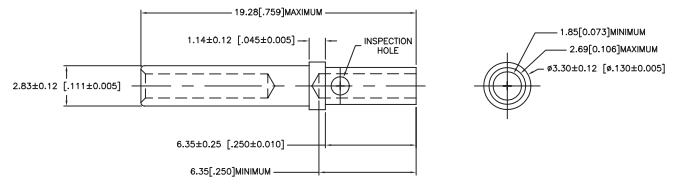


PART NUMBER: [AT62-201-16XX](#)
DESCRIPTION: CONTACT, SOCKET, SOLID MACHINED, SIZE 16
MATERIAL:
 CONTACT BODY: COPPER ALLOY
 HOOD: STAINLESS STEEL
PLATING SUFFIX CODE:
 XX=141 NICKEL PLATING
 XX=31 GOLD PLATING
CONTACT GENERAL DATA SPECIFICATION: S2-15217
AVAILABLE CRIMPERS: CA-5D12 & CA-5E12
CRIMPER SPECIFICATIONS: S2-15219 & S2-15220
CRIMP INFORMATION DRAWING: S2-15218



ROCKSOLID™ CONTACTS

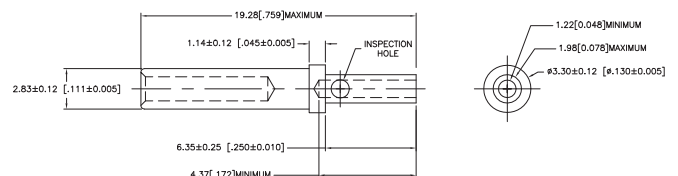
PART NUMBER: [65-54942-14](#)
DESCRIPTION: CONTACT, SOCKET, ROCKSOLID, SIZE 16
AWG RANGE: 14AWG
MATERIAL: COPPER ALLOY
PLATING: GOLD
CONTACT GENERAL DATA SPECIFICATION: S2-15217
AVAILABLE CRIMPERS: CA-5D12 & CA-5E12
CRIMPER SPECIFICATIONS: S2-15219 & S2-15220
CRIMP INFORMATION DRAWING: S2-15218



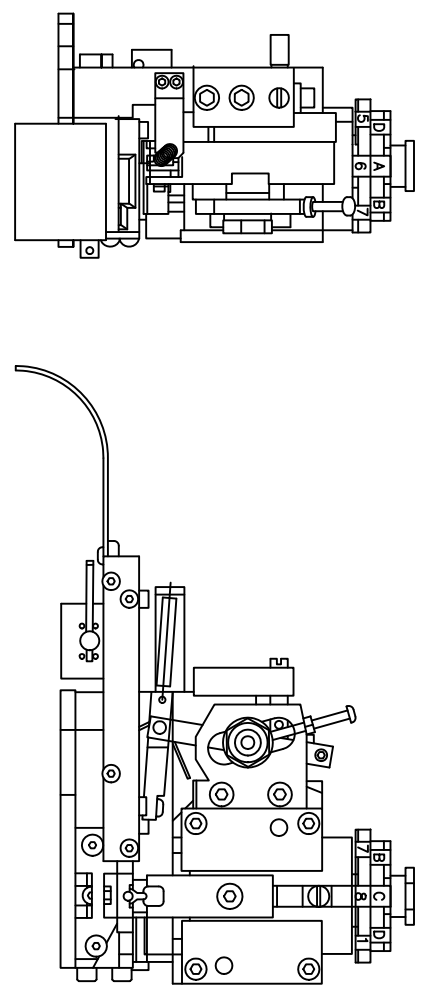
PART NUMBER: [65-54942-16](#)
DESCRIPTION: CONTACT, SOCKET, ROCKSOLID, SIZE 16
AWG RANGE: 16AWG
MATERIAL: COPPER ALLOY
PLATING: GOLD
CONTACT GENERAL DATA SPECIFICATION: S2-15217
AVAILABLE CRIMPERS: CA-5D12 & CA-5E12
CRIMPER SPECIFICATIONS: S2-15219 & S2-15220
CRIMP INFORMATION DRAWING: S2-15218



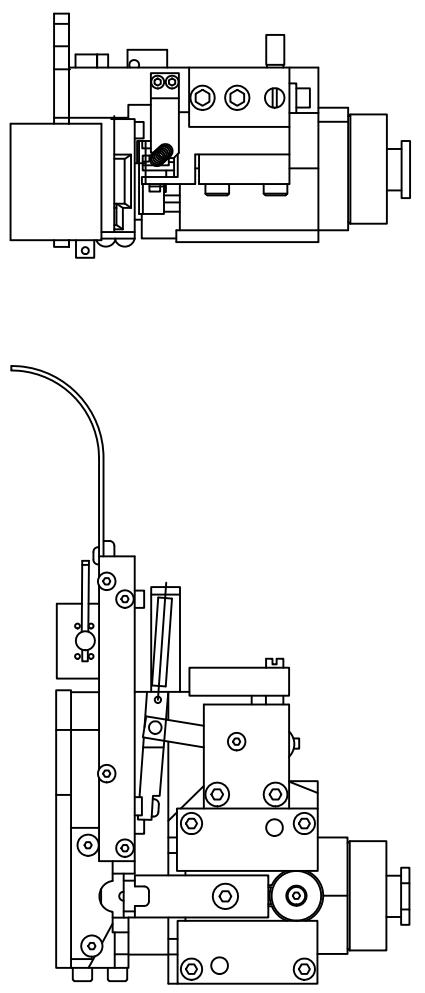
PART NUMBER: [65-54942-20](#)
DESCRIPTION: CONTACT, SOCKET, ROCKSOLID, SIZE 16
AWG RANGE: 20AWG
MATERIAL: COPPER ALLOY
PLATING: GOLD
CONTACT GENERAL DATA SPECIFICATION: S2-15217
AVAILABLE CRIMPERS: CA-5D12 & CA-5E12
CRIMPER SPECIFICATIONS: S2-15219 & S2-15220
CRIMP INFORMATION DRAWING: S2-15218



REVISIONS						
REV	ZONE	ECO	DESCRIPTION	DATE	BY	APPR
A1	-	-	RELEASE NUMBER 016571	6/12/09	B.D.B.	M.R.F.



SINE PART NUMBER	MFX-3950
DEUTSCH PART NUMBER	DCT16-02-00
TYCO PART NUMBER	1-3-1385344-1, 2, 3, 4, 5 & 7

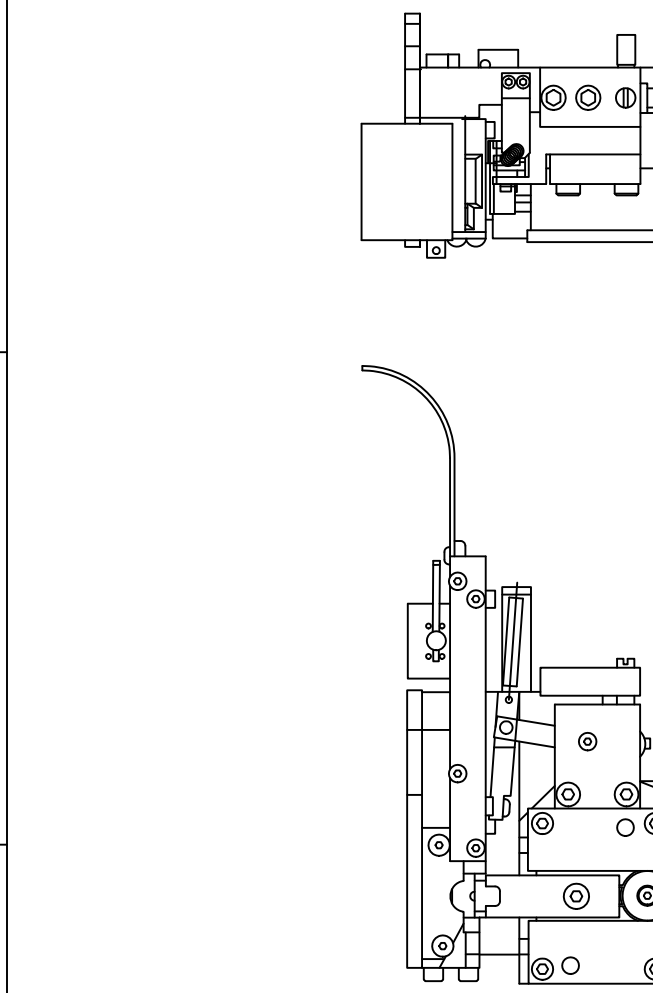


SINE PART NUMBER	MFX-3953
DEUTSCH PART NUMBER	DCT1620-02-00

ALL REFERENCES TO DEUTSCH PRODUCTS OR SPECIFICATIONS ARE FOR COMPARISON PURPOSES ONLY, AND REFER TO DEUTSCH INDUSTRIAL PRODUCTS.

ALL REFERENCES TO TYCO PRODUCTS OR SPECIFICATIONS ARE FOR COMPARISON PURPOSES ONLY, AND REFER TO TYCO ELECTRONICS.

QUANTITY	PART NUMBER	DESCRIPTION	ITEM
MATERIALS LIST			
UNLESS OTHERWISE SPECIFIED			
1) All dimensions are in inches.			
2) All tolerances are in inches.			
3) Pl. DEC 30.00			
4) Pl. DEC 30.00			
5) Pl. DEC 30.00			
6) Pl. DEC 30.00			
7) Pl. DEC 30.00			
8) Pl. DEC 30.00			
9) Pl. DEC 30.00			
10) Pl. DEC 30.00			
11) Pl. DEC 30.00			
12) Pl. DEC 30.00			
13) Pl. DEC 30.00			
14) Pl. DEC 30.00			
15) Pl. DEC 30.00			
16) Pl. DEC 30.00			
17) Pl. DEC 30.00			
18) Pl. DEC 30.00			
19) Pl. DEC 30.00			
20) Pl. DEC 30.00			
21) Pl. DEC 30.00			
22) Pl. DEC 30.00			
23) Pl. DEC 30.00			
24) Pl. DEC 30.00			
25) Pl. DEC 30.00			
26) Pl. DEC 30.00			
27) Pl. DEC 30.00			
28) Pl. DEC 30.00			
29) Pl. DEC 30.00			
30) Pl. DEC 30.00			
31) Pl. DEC 30.00			
32) Pl. DEC 30.00			
33) Pl. DEC 30.00			
34) Pl. DEC 30.00			
35) Pl. DEC 30.00			
36) Pl. DEC 30.00			
37) Pl. DEC 30.00			
38) Pl. DEC 30.00			
39) Pl. DEC 30.00			
40) Pl. DEC 30.00			
41) Pl. DEC 30.00			
42) Pl. DEC 30.00			
43) Pl. DEC 30.00			
44) Pl. DEC 30.00			
45) Pl. DEC 30.00			
46) Pl. DEC 30.00			
47) Pl. DEC 30.00			
48) Pl. DEC 30.00			
49) Pl. DEC 30.00			
50) Pl. DEC 30.00			
51) Pl. DEC 30.00			
52) Pl. DEC 30.00			
53) Pl. DEC 30.00			
54) Pl. DEC 30.00			
55) Pl. DEC 30.00			
56) Pl. DEC 30.00			
57) Pl. DEC 30.00			
58) Pl. DEC 30.00			
59) Pl. DEC 30.00			
60) Pl. DEC 30.00			
61) Pl. DEC 30.00			
62) Pl. DEC 30.00			
63) Pl. DEC 30.00			
64) Pl. DEC 30.00			
65) Pl. DEC 30.00			
66) Pl. DEC 30.00			
67) Pl. DEC 30.00			
68) Pl. DEC 30.00			
69) Pl. DEC 30.00			
70) Pl. DEC 30.00			
71) Pl. DEC 30.00			
72) Pl. DEC 30.00			
73) Pl. DEC 30.00			
74) Pl. DEC 30.00			
75) Pl. DEC 30.00			
76) Pl. DEC 30.00			
77) Pl. DEC 30.00			
78) Pl. DEC 30.00			
79) Pl. DEC 30.00			
80) Pl. DEC 30.00			
81) Pl. DEC 30.00			
82) Pl. DEC 30.00			
83) Pl. DEC 30.00			
84) Pl. DEC 30.00			
85) Pl. DEC 30.00			
86) Pl. DEC 30.00			
87) Pl. DEC 30.00			
88) Pl. DEC 30.00			
89) Pl. DEC 30.00			
90) Pl. DEC 30.00			
91) Pl. DEC 30.00			
92) Pl. DEC 30.00			
93) Pl. DEC 30.00			
94) Pl. DEC 30.00			
95) Pl. DEC 30.00			
96) Pl. DEC 30.00			
97) Pl. DEC 30.00			
98) Pl. DEC 30.00			
99) Pl. DEC 30.00			
100) Pl. DEC 30.00			



REV ZONE		ECO	DESCRIPTION	DATE	BY	APP
AT	-	-	RELEASE NUMBER 016871	6/12/09	B.D.B.	M.F.F.

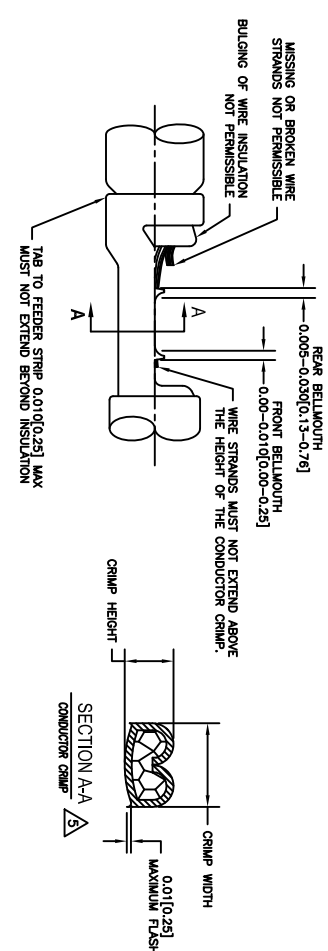
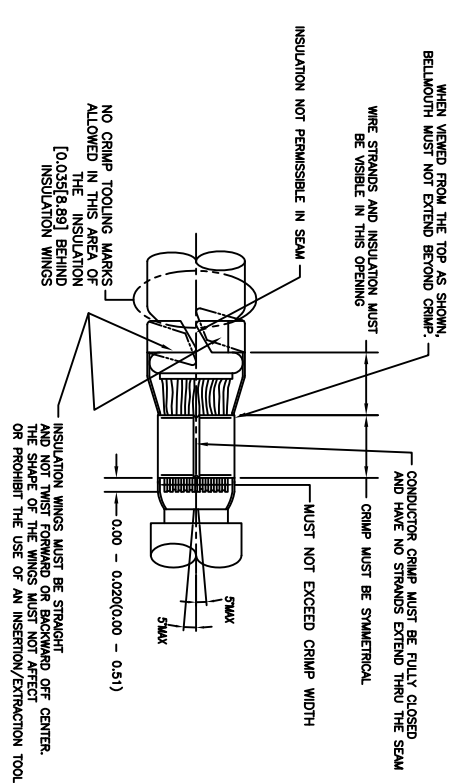
STAMPED CONTACT PART NUMBER 1068=PIN 1068=SOCKET	SIZE	CONDUCTOR WIRE SIZE	CRIMP HEIGHT	CRIMP WIDTH	CONDUCTOR PUNCH NUMBER	CONDUCTOR ANVIL NUMBER	CRIMP TENSILE REFERENCE
AT80-14-011x AT82-14-011x INSULATION RANGE 0.095-0.150(2.41-3.81)	16	14 AWG 2.00mm ² 1.50mm ² 16 AWG 1.00mm ² 18 AWG 0.75mm ²	0.055(1.40) 0.055(1.40) 0.055(1.39) 0.050(1.27) 0.049(1.24) 0.048(1.22)	±0.003 INCH [±0.08 mm]	AT17-002-0200	AT17-101-0200	28(111)
AT60-16-011x AT62-16-011x INSULATION RANGE 0.075-0.140(1.91-3.56)	16	14 AWG 2.00mm ² 1.50mm ² 16 AWG 1.00mm ² 18 AWG 0.75mm ²	0.051(1.29) 0.051(1.40) 0.051(1.35) 0.050(1.27) 0.049(1.24) 0.048(1.22)	±0.003 INCH [±0.08 mm]	AT17-003-0200	AT17-103-0200	28(111)
AT60-16-066x INSULATION RANGE 0.055-0.100(1.40-2.54)	16	16 AWG 1.00mm ² 0.75mm ² 20 AWG 0.50mm ²	0.050(1.27) 0.049(1.24) 0.048(1.22) 0.045(1.14)	±0.003 INCH [±0.08 mm]	AT17-003-0200	AT17-103-0200	28(111)

CROSS REFERENCE

SINE PART NUMBER	DEUTSCH PART NUMBER
MX-3950	DC116-02-00
AT17-002-0200	1017-002-0200
AT17-003-0200	1017-003-0200
AT17-101-0200	1017-101-0200
AT17-103-0200	1017-103-0200
AT17-210-0200	1017-210-0200
AT17-211-0200	1017-211-0200
AT17-213-0200	1017-213-0200
AT17-214-0200	1017-214-0200
AT17-217-0200	1017-217-0200
AT17-218-0200	1017-218-0200
AT17-310-0200	1017-310-0200
AT17-311-0200	1017-311-0200
AT17-313-0200	1017-313-0200
AT17-304-0200	1017-304-0200
AT17-317-0200	1017-317-0200

NOTES: UNLESS OTHERWISE SPECIFIED

1. ALL DIMENSIONS ARE IN INCHES(mm).
2. FORCES ARE IN POUNDS(LBS) AND NEWTONS(N).
3. "X"= PLATING SUFFIX. SEE INDIVIDUAL CONTACT DRAWING.
4. WIRE STRIP LENGTH: 0.175±0.029(4.43±0.74). BROKEN OR MISSING CONDUCTOR STRANDS ARE NOT ACCEPTABLE.
5. USE A BLADE MICROMEETER (0.100(2.54) MIN SPACING AND 0.060(0.010(1.50)(0.040) ANVIL) TO MEASURE THE CONDUCTOR CRIMP. SEE SECTION AA.
6. CRIMP TENSILE STRENGTH IS DETERMINED AT A PULL RATE SPEED OF 1.00 INCH(25.4) PER MINUTE. INSULATION WINGS ARE REMOVED FOR TEST. ACTUAL CRIMP TENSILE STRENGTH DEPENDS ON WIRE/CONDUCTOR SIZE. VALUES ON THIS SPECIFICATION ARE FOR REFERENCE ONLY.
7. INSULATION DIAMETER RANGE IS DETERMINED BY CONNECTOR AND ITS WIRE SEAL SIZE. SEE CONNECTOR DRAWING FOR INSULATION RANGE.
8. INSULATION CRIMP DIAMETER SHOULD BE THE EQUAL OR LESS THAN THE DIAMETER OF THE WIRE INSULATION (HARD OR TEFION INSULATION MAY BE AN EXCEPTION). INSULATION CRIMP SHALL NOT AFFECT REMOVAL TOOL PERFORMANCE AND SHALL NOT DAMAGE CONNECTOR GROMMET SEAL.
9. CONDUCTOR TYPE ARE PER SAE J1128(AWG) AND ISO 6722(METRIC)
10. FOR CONTACT MATERIAL AND PERFORMANCE DATA, SEE DRAWING S2-15217.
11. REFER TO S2-15223 AND S2-15224 AND CROSS REFERENCE CHARTS FOR CRIMP TOOL DATA.



ALL REFERENCES TO DEUTSCH PRODUCTS OR SPECIFICATIONS ARE FOR COMPARISON PURPOSES ONLY, AND REFER TO DEUTSCH INDUSTRIAL PRODUCTS.

QUANTITY	PART NUMBER	MATERIALS LIST	DESCRIPTION	ITEM
UNLESS OTHERWISE SPECIFIED	SIGNATURES	DATE		
1) All dimensions are in inches.	DRAWN: POTER	4/7/09	SINE Systems Corporation	
2) All tolerances are per ASME Y14.5.	CHECKED: RONE	6/8/09	A Subsidiary of Amphenol Corporation	
3) Production Standards Per: 4) Rev. SS-20020	ENGINEER: BERLIN	6/8/09	44724 Moley Drive	
5) Material Specifications: APPROVAL: BERLIN	CUSTOMER: BERLIN	6/8/09	Clinton Township, MI 48036	
6) Process Specifications: WA			CRIMP DATA, STAMPED CONTACTS FOR CRIMPER MFX-3950	
7) The use of this drawing is restricted to the production of parts for the project identified on this drawing. All dimensions are subject to removal without notice. All documents reference HERON MW DRAWING UNLESS OTHERWISE NOTED.			SIZE: (PUNCH NUMBER) S2-15222	REVISION: A1
			SCALE: NONE	SHEET: 1 OF 1

REVISIONS			
REV	ZONE	ECO	DESCRIPTION
A1	-	-	RELEASE NUMBER 016971
			DATE 6/12/09
			BY B.O.B.
			APP M.F.F.

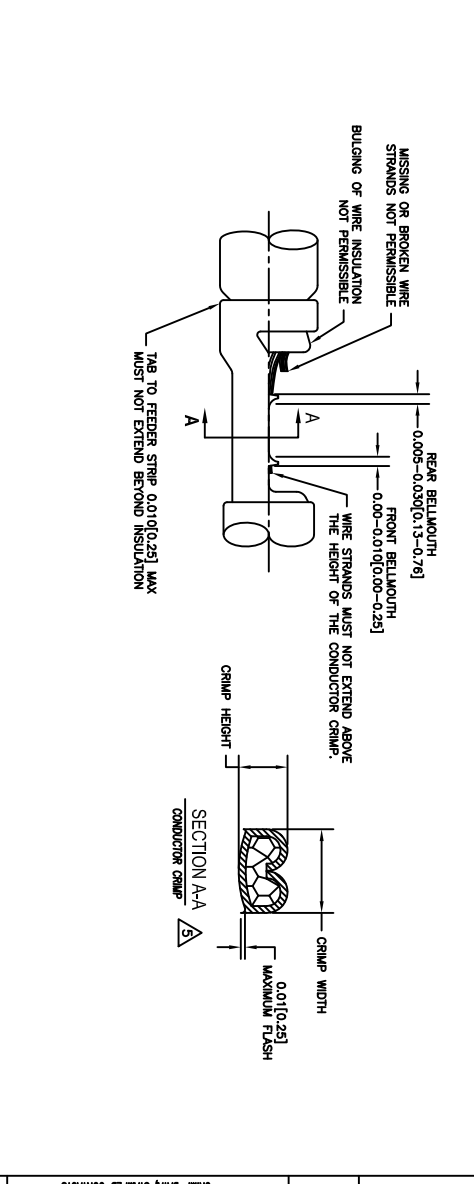
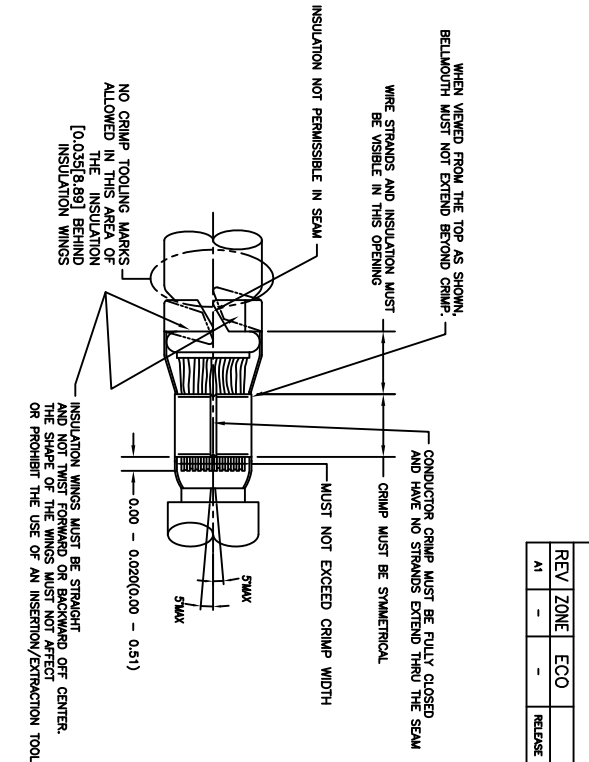
STAMPED CONTACT PART NUMBER 1009-FIN 1009-SOCKET	SIZE	CONDUCTOR WIRE SIZE	CRIMP HEIGHT +0.001/-0.002 INCH (+0.025/-0.05 mm)	CRIMP WIDTH ±0.003 INCH (±0.08 mm)	CONDUCTOR PUNCH NUMBER	CONDUCTOR ANVIL NUMBER	CRIMP TENSILE REFERENCE (LBS/IN)
A160-14-011x	16	14 AWG 2.00mm ²	0.0591(1.40)	0.0942(2.39)			
A162-14-011x	16	1.50mm ²	0.0591(1.40)	0.0942(2.39)			
INSULATION RANGE 0.0950-1.50(2.41-3.81)		16 AWG 1.00mm ²	0.0501(1.27)	0.0842(2.39)	A117-4083-0200	A117-183-0200	291(11)
		18 AWG	0.0491(1.24)	0.0842(2.39)			
		0.75mm ²	0.0491(1.24)	0.0942(2.39)			
		14 AWG	0.0591(1.40)	0.0942(2.39)			
		2.00mm ²	0.0591(1.40)	0.0942(2.39)			
		1.50mm ²	0.0591(1.40)	0.0942(2.39)			
A160-16-011x	16	16 AWG 0.0750-1.40(1.91-3.59)	0.0501(1.27)	0.0942(2.39)	A117-4083-0200	A117-183-0200	291(11)
		18 AWG	0.0491(1.24)	0.0942(2.39)			
		0.75mm ²	0.0491(1.24)	0.0842(2.39)			
		16 AWG	0.0501(1.27)	0.092(2.01)			
		1.00mm ²	0.0501(1.27)	0.0792(2.01)			
A162-16-066x	16	18 AWG 0.75mm ² 20 AWG 0.50mm ²	0.0501(1.27) 0.0491(1.24) 0.0491(1.24)	0.0792(2.01) 0.0792(2.01) 0.0792(2.01)	A117-4082-0200 A117-182-0200		291(11) 19(67)

CROSS REFERENCE

INSULATION DIAMETER RANGE	INSULATION PUNCH NUMBER	INSULATION ANVIL NUMBER	SINE PART NUMBER	DEUTSCH PART NUMBER
0.120-0.150	A117-225-0200	A117-326-0200	MFX-3953	DCT1620-02-00
0.105-0.125	A117-226-0200	A117-326-0200	A117-083-0200	1017-083-0200
0.085-0.111	A117-227-0200	A117-327-0200	A117-082-0200	1017-082-0200
0.075-0.105	A117-228-0200	A117-328-0200	A117-183-0200	1017-183-0200
0.063-0.094	A117-229-0200	A117-329-0200	A117-182-0200	1017-182-0200
0.050-0.075	A117-230-0200	A117-330-0200	A117-225-0200	1017-225-0200
			A117-226-0200	1017-226-0200
			A117-227-0200	1017-227-0200
			A117-228-0200	1017-228-0200
			A117-229-0200	1017-229-0200
			A117-230-0200	1017-230-0200
			A117-325-0200	1017-325-0200
			A117-326-0200	1017-326-0200
			A117-327-0200	1017-327-0200
			A117-328-0200	1017-328-0200
			A117-329-0200	1017-329-0200
			A117-330-0200	1017-330-0200

NOTES: UNLESS OTHERWISE SPECIFIED

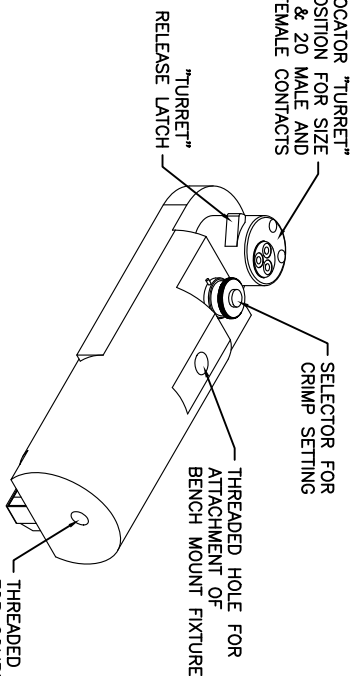
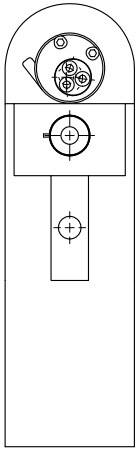
1. ALL DIMENSIONS ARE IN INCHES(mm).
2. FORCES ARE IN POUNDS(LBS) AND NEWTONS(N).
3. "X" = PLATING SUFFIX. SEE INDIVIDUAL CONTACT DRAWING.
4. WIRE STRIP LENGTH: 0.175±0.0294(4.5±0.54). BROKEN OR MISSING CONDUCTOR STRANDS ARE NOT ACCEPTABLE. USE A BLADE MICROMETER (0.100[2.54] MIN SPINDLE AND 0.060[0.0101] 1.50[0.040] ANVIL) TO MEASURE THE CONDUCTOR CRIMP. SEE SECTION AA.
5. CRIMP TENSILE STRENGTH IS DETERMINED AT A PULL RATE SPEED OF 1.00 INCH(2.54) PER MINUTE. INSULATION WINGS ARE REMOVED FOR TEST. ACTUAL CRIMP TENSILE STRENGTH DEPENDS ON WIRE/CONDUCTOR SIZE. VALUES ON THIS SPECIFICATION ARE FOR REFERENCE ONLY.
6. INSULATION DIAMETER RANGE IS DETERMINED BY CONNECTOR AND ITS WIRE SEAL SIZE. SEE CONNECTOR DRAWING FOR INSULATION RANGE.
7. INSULATION CRIMP DIAMETER SHOULD BE THE EQUAL OR LESS THAN THE DIAMETER OF THE WIRE INSULATION (HARD OR TEFION INSULATION MAY BE AN EXCEPTION). INSULATION CRIMP SHALL NOT AFFECT REMOVAL TOOL PERFORMANCE AND SHALL NOT DAMAGE CONNECTOR GROMMET SEAL.
8. CONDUCTOR TYPE ARE PER SAE J1128(AWG) AND ISO 6122(METRIC)
9. FOR CONTACT MATERIAL AND PERFORMANCE DATA. SEE DRAWING S2-15217.
10. REFER TO S2-15223 AND S2-15224 AND CROSS REFERENCE CHARTS FOR CRIMP TOOL DATA.



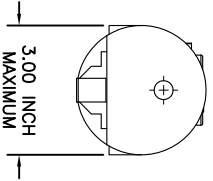
QUANTITY	PART NUMBER	MATERIALS LIST	DESCRIPTION	ITEM
UNLESS OTHERWISE SPECIFIED	SIGNATURES	DATE		
1) All dimensions are in inches.	DATE	4/7/09		
2) All dimensions are in millimeters.	DATE	6/8/09		
3) Production Standard Per: Alpha S1*	ENGINEER	BERNIM		
4) Form: S2-20020	APPROVAL	BERNIM	6/8/09	
MATERIAL SPECIFICATIONS:	CUSTOMER			
NA				
PROCESS SPECIFICATIONS:				
THE USE OF THIS DRAWING IS SPECIFIC TO THE PART AND PERFORMANCE OF THE PART. ANY CHANGE TO THE PART OR PERFORMANCE OF THE PART MUST BE APPROVED BY THE ORIGINAL DESIGNER. ALL DIMENSIONS ARE SUBJECT TO NORMAL DIMENSIONAL VARIATION UNLESS OTHERWISE SPECIFIED. ALL DIMENSIONS REFERENCED HEREON UNLESS OTHERWISE SPECIFIED.				
SIZE	SCALE	SIZE	SCALE	SIZE
10K/44	C	10K/44	C	10K/44
S2-15221	S2-15221	S2-15221	S2-15221	S2-15221
SHEET 1	SHEET 1	SHEET 1	SHEET 1	SHEET 1

REVOLUTIONS		DESCRIPTION	DATE	BY	APPR
REV	ZONE	ECO	RELEASE NUMBER 016571	B.D.B.	M.R.F.
A1	-	-	6/12/09		

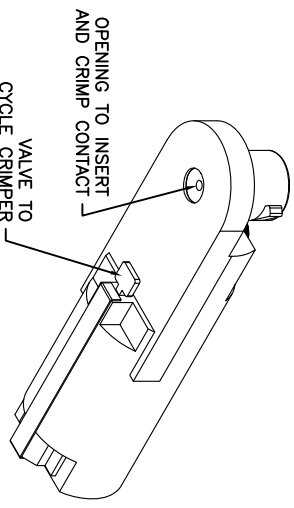
CONTACT LOCATOR "TURRET"
THREE POSITION FOR SIZE
12, 16 & 20 MALE AND
FEMALE CONTACTS



THREADED OPENING
FOR COMPRESSED
AIR FITTING



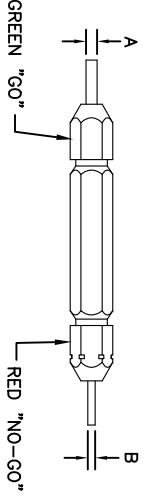
- NOTES:
1. THE CA-5E12 IS A COMPRESSED AIR OPERATED HAND CRIMPER FOR ELECTRICAL CONTACTS. IT IS ADJUSTABLE TO 3 CONTACT SIZES (12, 16 & 20) AND 8 INDENTER CRIMP POSITIONS FOR DIFFERENT WIRE SIZES (12AWG THRU 26 AWG).
 2. 80-120 PSI COMPRESSED AIR.
 3. WEIGHT: 3.1 LBS
 4. SELECTING CONTACT SIZE: PRESS THE RELEASE LATCH ON SIDE OF THE CONTACT LOCATOR "TURRET". ROTATE TO THE DESIRED CONTACT SIZE. THE TOP OF THE "TURRET" IS EMBOSSED WITH THE CONTACT SIZES.
 5. SELECTING WIRE SIZE: GRASP THE SELECTOR AND ROTATE TO THE DESIRED NUMBER.



GAGE PART NO.	A GO DIA.	B NO-GO DIA.	SELECTOR NUMBER
G125	.0390	.0440	4

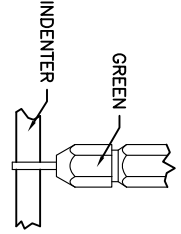
GAGING INSTRUCTIONS

CAUTION!
DO NOT CRIMP GAGE!

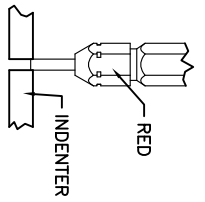


"GO" GAGING: OPERATE TOOL TO FULLY CLOSED POSITION. INSERT "GO" GAGE END AS SHOWN. GAGE MUST PASS FREELY BETWEEN INDENTER TIPS.

"NO-GO" GAGING: OPERATE TOOL TO FULLY CLOSED POSITION. INSERT "NO-GO" GAGE END AS SHOWN. THE "NO-GO" MAY PARTIALLY ENTER THE INDENTER OPENING, BUT MUST NOT PASS COMPLETELY THROUGH THE OPENING.



SELECTOR NUMBER	A GO DIA.	B NO-GO DIA.
1	.0280	.0330
2	.0320	.0370
3	.0360	.0410
4	.0390	.0440
5	.0450	.0500
6	.0520	.0570
7	.0590	.0640
8	.0680	.0730



CONTACT SIZE	LOCATOR "TURRET" POSITION	WIRE COLOR	SELECTOR NUMBER
20-20	RED	1	2
16-22	BLUE	4	5
16-20	BLUE	1	2
16-16	BLUE	4	5
12-16	YELLOW	4	5
12-12	YELLOW		7
			8

QUANTITY PART NUMBER MATERIALS LIST DESCRIPTION ITEM

UNLESS OTHERWISE SPECIFIED	SIGNATURES	DATE
1) All dimensions are in inches.	DESIGNER: BERNIM	6/2/09
2) Pl. DEC 2000 1 Position 31/4"	CHECKER: TONCE	6/3/09
3) Pl. DEC 2000 1 Position 31/4"	ENGINEER: BERNIM	6/3/09
4) Pl. DEC 2000 1 Position 31/4"	APPROVAL: BERNIM	6/3/09
5) Revision Standard Per: A	CUSTOMER:	
6) Title: SS-20020		
7) Material Specification:		
8) Material Specification:		
9) Material Specification:		
10) Material Specification:		
11) Material Specification:		
12) Material Specification:		
13) Material Specification:		
14) Material Specification:		
15) Material Specification:		
16) Material Specification:		
17) Material Specification:		
18) Material Specification:		
19) Material Specification:		
20) Material Specification:		
21) Material Specification:		
22) Material Specification:		
23) Material Specification:		
24) Material Specification:		
25) Material Specification:		
26) Material Specification:		
27) Material Specification:		
28) Material Specification:		
29) Material Specification:		
30) Material Specification:		
31) Material Specification:		
32) Material Specification:		
33) Material Specification:		
34) Material Specification:		
35) Material Specification:		
36) Material Specification:		
37) Material Specification:		
38) Material Specification:		
39) Material Specification:		
40) Material Specification:		
41) Material Specification:		
42) Material Specification:		
43) Material Specification:		
44) Material Specification:		
45) Material Specification:		
46) Material Specification:		
47) Material Specification:		
48) Material Specification:		
49) Material Specification:		
50) Material Specification:		
51) Material Specification:		
52) Material Specification:		
53) Material Specification:		
54) Material Specification:		
55) Material Specification:		
56) Material Specification:		
57) Material Specification:		
58) Material Specification:		
59) Material Specification:		
60) Material Specification:		
61) Material Specification:		
62) Material Specification:		
63) Material Specification:		
64) Material Specification:		
65) Material Specification:		
66) Material Specification:		
67) Material Specification:		
68) Material Specification:		
69) Material Specification:		
70) Material Specification:		
71) Material Specification:		
72) Material Specification:		
73) Material Specification:		
74) Material Specification:		
75) Material Specification:		
76) Material Specification:		
77) Material Specification:		
78) Material Specification:		
79) Material Specification:		
80) Material Specification:		
81) Material Specification:		
82) Material Specification:		
83) Material Specification:		
84) Material Specification:		
85) Material Specification:		
86) Material Specification:		
87) Material Specification:		
88) Material Specification:		
89) Material Specification:		
90) Material Specification:		
91) Material Specification:		
92) Material Specification:		
93) Material Specification:		
94) Material Specification:		
95) Material Specification:		
96) Material Specification:		
97) Material Specification:		
98) Material Specification:		
99) Material Specification:		
100) Material Specification:		

SINE Systems Corporation

A Subsidiary of Amphenol Corporation
44724 Mowley Drive
Carlton Township, MI 48036

INSTRUCTIONS FOR CA-5E12
CRIMPER, PNEUMATIC

SIZE: 10K44
SCALE: NONE
S2-15220

PROCESS SPECIFICATIONS	THE USE OF THIS DRAWING IS SPECIFIC TO THE PART AND SPECIFICATIONS AND REQUIREMENTS INDICATED THEREON. ANY DEVIATION FROM THESE SPECIFICATIONS OR REQUIREMENTS WITHOUT THE WRITTEN APPROVAL OF SINE SYSTEMS CORPORATION IS PROHIBITED. ALL DIMENSIONS ARE IN INCHES UNLESS OTHERWISE SPECIFIED.	SIZE: 10K44	SCALE: NONE	S2-15220	SHEET: 1 OF 1
NEXT ASSY:					

A

B

C

D

4

3

2

1

4

3

2

1

REV ZONE		ECO		REVISIONS		DESCRIPTION	DATE	BY	APPR
AI	-	-	-	RELEASE NUMBER	016571		6/12/09	B.D.B.	M.R.F.

CONTACT LOCATOR
"TURRET"
THREE POSITIONS FOR
SIZE 12, 16 & 20 MALE
AND FEMALE CONTACTS

"TURRET" RELEASE LATCH

6.25 INCH
MAXIMUM
OPEN

2.30 INCH
MAXIMUM
CLOSED

SELECTOR FOR CRIMP
SETTING

1.125 INCH MAX.

9.75 INCH MAXIMUM

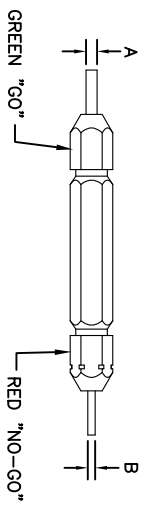
1.00 INCH MAX.

- NOTES:
- THE CA-5D12 IS A HAND OPERATED CRIMPER FOR ELECTRICAL CONTACTS. IT IS ADJUSTABLE TO 3 CONTACT SIZES (12, 16 & 20) AND 8 INDENTER CRIMP POSITIONS FOR DIFFERENT WIRE SIZES (12AWG THRU 26 AWG).
 - WEIGHT: 1.64 LBS
 - SELECTING CONTACT SIZE: PRESS THE RELEASE LATCH ON SIDE OF THE CONTACT LOCATOR "TURRET". ROTATE TO THE DESIRED CONTACT SIZE. THE TOP OF THE "TURRET" IS EMBOSSED WITH THE CONTACT SIZES.
 - SELECTING WIRE SIZE: REMOVE THE LOCKING CLIP. GRASP THE SELECTOR AND ROTATE TO THE DESIRED NUMBER.

GAGE PART NO.	A GO DIA.	B NO-GO DIA.	SELECTOR NUMBER
G125	.0390	.0440	4

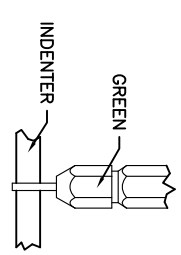
GAGING INSTRUCTIONS

CAUTION!
DO NOT CRIMP GAGE!



"GO" GAGING: OPERATE TOOL TO FULLY CLOSED POSITION. INSERT "GO" GAGE END AS SHOWN. GAGE MUST PASS FREELY BETWEEN INDENTER TIPS.

"NO-GO" GAGING: OPERATE TOOL TO FULLY CLOSED POSITION. INSERT "NO-GO" GAGE END AS SHOWN. THE "NO-GO" MAY PARTIALLY ENTER THE INDENTER OPENING, BUT MUST NOT PASS COMPLETELY THROUGH THE OPENING.



SELECTOR NUMBER	A GO DIA.	B NO-GO DIA.
1	.0280	.0330
2	.0320	.0370
3	.0360	.0410
4	.0390	.0440
5	.0450	.0500
6	.0520	.0570
7	.0590	.0640
8	.0880	.0730

CONTACT SIZE	LOCATOR "TURRET" POSITION	WIRE COLOR	1	2	3	4	5	6	7	8
20-20	RED	1	2	3	4					
16-22	BLUE	4	5	6						
16-20	BLUE	1	2	3	4					
16-16	BLUE	4	5	6						
12-16	YELLOW	4	5	6						
12-12	YELLOW									8

QUANTITY PART NUMBER MATERIALS LIST DESCRIPTION ITEM

UNLESS OTHERWISE SPECIFIED:
 1) All dimensions are in inches.
 2) Pl. DEC 2000
 3) Pl. DEC 2000
 4) Pl. DEC 2000
 5) Pl. DEC 2000
 6) Pl. DEC 2000
 7) Pl. DEC 2000
 8) Pl. DEC 2000
 9) Pl. DEC 2000
 10) Pl. DEC 2000
 11) Pl. DEC 2000
 12) Pl. DEC 2000
 13) Pl. DEC 2000
 14) Pl. DEC 2000
 15) Pl. DEC 2000
 16) Pl. DEC 2000
 17) Pl. DEC 2000
 18) Pl. DEC 2000
 19) Pl. DEC 2000
 20) Pl. DEC 2000
 21) Pl. DEC 2000
 22) Pl. DEC 2000
 23) Pl. DEC 2000
 24) Pl. DEC 2000
 25) Pl. DEC 2000
 26) Pl. DEC 2000
 27) Pl. DEC 2000
 28) Pl. DEC 2000
 29) Pl. DEC 2000
 30) Pl. DEC 2000
 31) Pl. DEC 2000
 32) Pl. DEC 2000
 33) Pl. DEC 2000
 34) Pl. DEC 2000
 35) Pl. DEC 2000
 36) Pl. DEC 2000
 37) Pl. DEC 2000
 38) Pl. DEC 2000
 39) Pl. DEC 2000
 40) Pl. DEC 2000
 41) Pl. DEC 2000
 42) Pl. DEC 2000
 43) Pl. DEC 2000
 44) Pl. DEC 2000
 45) Pl. DEC 2000
 46) Pl. DEC 2000
 47) Pl. DEC 2000
 48) Pl. DEC 2000
 49) Pl. DEC 2000
 50) Pl. DEC 2000
 51) Pl. DEC 2000
 52) Pl. DEC 2000
 53) Pl. DEC 2000
 54) Pl. DEC 2000
 55) Pl. DEC 2000
 56) Pl. DEC 2000
 57) Pl. DEC 2000
 58) Pl. DEC 2000
 59) Pl. DEC 2000
 60) Pl. DEC 2000
 61) Pl. DEC 2000
 62) Pl. DEC 2000
 63) Pl. DEC 2000
 64) Pl. DEC 2000
 65) Pl. DEC 2000
 66) Pl. DEC 2000
 67) Pl. DEC 2000
 68) Pl. DEC 2000
 69) Pl. DEC 2000
 70) Pl. DEC 2000
 71) Pl. DEC 2000
 72) Pl. DEC 2000
 73) Pl. DEC 2000
 74) Pl. DEC 2000
 75) Pl. DEC 2000
 76) Pl. DEC 2000
 77) Pl. DEC 2000
 78) Pl. DEC 2000
 79) Pl. DEC 2000
 80) Pl. DEC 2000
 81) Pl. DEC 2000
 82) Pl. DEC 2000
 83) Pl. DEC 2000
 84) Pl. DEC 2000
 85) Pl. DEC 2000
 86) Pl. DEC 2000
 87) Pl. DEC 2000
 88) Pl. DEC 2000
 89) Pl. DEC 2000
 90) Pl. DEC 2000
 91) Pl. DEC 2000
 92) Pl. DEC 2000
 93) Pl. DEC 2000
 94) Pl. DEC 2000
 95) Pl. DEC 2000
 96) Pl. DEC 2000
 97) Pl. DEC 2000
 98) Pl. DEC 2000
 99) Pl. DEC 2000
 100) Pl. DEC 2000

PROCESS SPECIFICATIONS:
 NONE
 APPROVAL: BERNUM 6/3/09
 CUSTOMER: BERNUM 6/3/09
 THE USE OF THIS DRAWING IS LIMITED TO THE SPECIFICATIONS AND REQUIREMENTS OF THE ORIGINAL DRAWING. ANY REVISIONS OR MODIFICATIONS ARE SUBJECT TO APPROVAL BY THE ORIGINAL DRAWING AUTHOR. ALL DIMENSIONS ARE IN UNLESS OTHERWISE SPECIFIED.
 SIZE: 10K/44
 SCALE: NONE
 INSTRUCTIONS FOR CA-5D12 CRIMPER, HAND, MACHINED CONTACTS
 S2-15219
 SHEET 1 OF 1

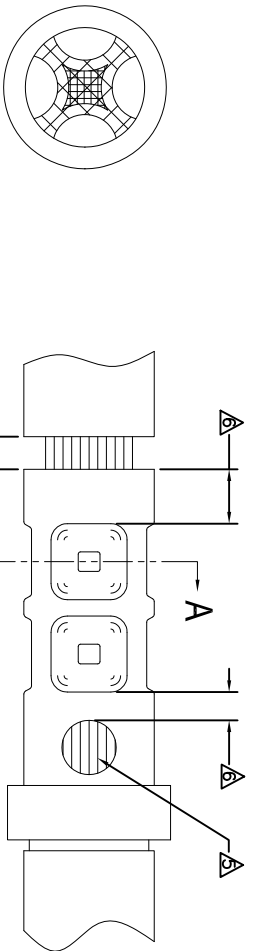
REVOLUTIONS		DESCRIPTION	DATE	BY	APPR
REV	ZONE	ECO	RELEASE NUMBER 016571	B.D.B.	M.R.F.
A1	-	-			

CONTACT P/N	SIZE TYPE	WIRE SIZE	REF. ONLY TENSILE LBS[<u>N</u>]
AT60-202-16XX	16PIN	1.5mm ² 16AWG	35[156]
AT62-201-16XX	16SOC	1.0mm ² 18AWG 0.75mm ² 20AWG	25[111] 20[89]

RECOMMENDED STRIP LENGTH	
CONTACT SIZE	STRIP LENGTH INCH[MM]
16	0.250-0.312[6.35-7.92]

CRIMP TOOLING						
CONTACT SIZE	CRIMP TOOL PART NUMBER	CONTACT LOCATOR "TURRET" POSITION	WIRE SELECTOR NUMBER	GO GAGE INCH[MM]	"NOGO" GAGE INCH[MM]	REMARKS
16	CA-5D12 CA-5E12	BLUE	6	0.052[1.32]	0.057[1.45]	
16	CA-5D12 CA-5E12	BLUE	4	0.039[.991]	0.044[1.12]	SIZE 16 WITH 20 AWG WIRE

- NOTES: UNLESS OTHERWISE SPECIFIED
- 1. MINIMUM +/-0.0005 [0.013] TOLERANCE STEEL GAGE PINS. DO NOT CRIMP GAGE PINS. CLOSE DIE, THEN USE GAGE PINS.
 - 2. WHEN XX=31, CONTACT PLATING IS GOLD WHEN XX=141, CONTACT PLATING IS NICKEL
 - 3. PULL RATE OF 1.0 IN [25.4] PER MINUTE. ACTUAL STRENGTH DEPENDS ON WIRE SIZE.
 - 4. FOR CONTACT PERFORMANCE, MATERIAL SPECIFICATIONS AND APPLICATION DETAILS, SEE DRAWING S2-15217. CONDUCTOR STRANDS MUST BE VISIBLE THRU THE INSPECTION HOLE PRIOR TO CRIMP.
 - 5. PROPER CRIMP TOOLING WILL PRODUCE A CRIMP CENTERED BETWEEN THE INSPECTION HOLE AND CRIMP BARREL END.
 - 6. WIRE SIZES PER SAE J1128 AND J1560 [DIN 72551-6]
 - 7. REFERENCE INSTRUCTION MANUALS S2-15219 AND S2-15220 FOR CA-5D12 AND CA-5E12 HAND AND PNEUMATIC CRIMPER.
 - 8. THE CRIMP HEIGHT DIMENSION AFTER CRIMPING MAY VARY FROM THE VALUES LISTED FOR THE "GO-NOGO" PINS.



QUANTITY	PART NUMBER	DESCRIPTION	ITEM
UNLESS OTHERWISE SPECIFIED			
1) All dimensions are in inches.			
2) For tolerances see ASME Y14.5-2009			
3) Pl. SEE 30.00 [Precision 31/64]			
4) Pl. SEE 30.01 [Angles 31/4]			
5) Fabrication Standards Per: <input type="checkbox"/> U <input type="checkbox"/> B <input type="checkbox"/> M			
6) Pl. SEE 30.02 [Angles 31/4]			
7) Pl. SEE 30.03 [Angles 31/4]			
8) Pl. SEE 30.04 [Angles 31/4]			
9) Pl. SEE 30.05 [Angles 31/4]			
10) Pl. SEE 30.06 [Angles 31/4]			
11) Pl. SEE 30.07 [Angles 31/4]			
12) Pl. SEE 30.08 [Angles 31/4]			
13) Pl. SEE 30.09 [Angles 31/4]			
14) Pl. SEE 30.10 [Angles 31/4]			
15) Pl. SEE 30.11 [Angles 31/4]			
16) Pl. SEE 30.12 [Angles 31/4]			
17) Pl. SEE 30.13 [Angles 31/4]			
18) Pl. SEE 30.14 [Angles 31/4]			
19) Pl. SEE 30.15 [Angles 31/4]			
20) Pl. SEE 30.16 [Angles 31/4]			
21) Pl. SEE 30.17 [Angles 31/4]			
22) Pl. SEE 30.18 [Angles 31/4]			
23) Pl. SEE 30.19 [Angles 31/4]			
24) Pl. SEE 30.20 [Angles 31/4]			
25) Pl. SEE 30.21 [Angles 31/4]			
26) Pl. SEE 30.22 [Angles 31/4]			
27) Pl. SEE 30.23 [Angles 31/4]			
28) Pl. SEE 30.24 [Angles 31/4]			
29) Pl. SEE 30.25 [Angles 31/4]			
30) Pl. SEE 30.26 [Angles 31/4]			
31) Pl. SEE 30.27 [Angles 31/4]			
32) Pl. SEE 30.28 [Angles 31/4]			
33) Pl. SEE 30.29 [Angles 31/4]			
34) Pl. SEE 30.30 [Angles 31/4]			
35) Pl. SEE 30.31 [Angles 31/4]			
36) Pl. SEE 30.32 [Angles 31/4]			
37) Pl. SEE 30.33 [Angles 31/4]			
38) Pl. SEE 30.34 [Angles 31/4]			
39) Pl. SEE 30.35 [Angles 31/4]			
40) Pl. SEE 30.36 [Angles 31/4]			
41) Pl. SEE 30.37 [Angles 31/4]			
42) Pl. SEE 30.38 [Angles 31/4]			
43) Pl. SEE 30.39 [Angles 31/4]			
44) Pl. SEE 30.40 [Angles 31/4]			
45) Pl. SEE 30.41 [Angles 31/4]			
46) Pl. SEE 30.42 [Angles 31/4]			
47) Pl. SEE 30.43 [Angles 31/4]			
48) Pl. SEE 30.44 [Angles 31/4]			
49) Pl. SEE 30.45 [Angles 31/4]			
50) Pl. SEE 30.46 [Angles 31/4]			
51) Pl. SEE 30.47 [Angles 31/4]			
52) Pl. SEE 30.48 [Angles 31/4]			
53) Pl. SEE 30.49 [Angles 31/4]			
54) Pl. SEE 30.50 [Angles 31/4]			
55) Pl. SEE 30.51 [Angles 31/4]			
56) Pl. SEE 30.52 [Angles 31/4]			
57) Pl. SEE 30.53 [Angles 31/4]			
58) Pl. SEE 30.54 [Angles 31/4]			
59) Pl. SEE 30.55 [Angles 31/4]			
60) Pl. SEE 30.56 [Angles 31/4]			
61) Pl. SEE 30.57 [Angles 31/4]			
62) Pl. SEE 30.58 [Angles 31/4]			
63) Pl. SEE 30.59 [Angles 31/4]			
64) Pl. SEE 30.60 [Angles 31/4]			
65) Pl. SEE 30.61 [Angles 31/4]			
66) Pl. SEE 30.62 [Angles 31/4]			
67) Pl. SEE 30.63 [Angles 31/4]			
68) Pl. SEE 30.64 [Angles 31/4]			
69) Pl. SEE 30.65 [Angles 31/4]			
70) Pl. SEE 30.66 [Angles 31/4]			
71) Pl. SEE 30.67 [Angles 31/4]			
72) Pl. SEE 30.68 [Angles 31/4]			
73) Pl. SEE 30.69 [Angles 31/4]			
74) Pl. SEE 30.70 [Angles 31/4]			
75) Pl. SEE 30.71 [Angles 31/4]			
76) Pl. SEE 30.72 [Angles 31/4]			
77) Pl. SEE 30.73 [Angles 31/4]			
78) Pl. SEE 30.74 [Angles 31/4]			
79) Pl. SEE 30.75 [Angles 31/4]			
80) Pl. SEE 30.76 [Angles 31/4]			
81) Pl. SEE 30.77 [Angles 31/4]			
82) Pl. SEE 30.78 [Angles 31/4]			
83) Pl. SEE 30.79 [Angles 31/4]			
84) Pl. SEE 30.80 [Angles 31/4]			
85) Pl. SEE 30.81 [Angles 31/4]			
86) Pl. SEE 30.82 [Angles 31/4]			
87) Pl. SEE 30.83 [Angles 31/4]			
88) Pl. SEE 30.84 [Angles 31/4]			
89) Pl. SEE 30.85 [Angles 31/4]			
90) Pl. SEE 30.86 [Angles 31/4]			
91) Pl. SEE 30.87 [Angles 31/4]			
92) Pl. SEE 30.88 [Angles 31/4]			
93) Pl. SEE 30.89 [Angles 31/4]			
94) Pl. SEE 30.90 [Angles 31/4]			
95) Pl. SEE 30.91 [Angles 31/4]			
96) Pl. SEE 30.92 [Angles 31/4]			
97) Pl. SEE 30.93 [Angles 31/4]			
98) Pl. SEE 30.94 [Angles 31/4]			
99) Pl. SEE 30.95 [Angles 31/4]			
100) Pl. SEE 30.96 [Angles 31/4]			
101) Pl. SEE 30.97 [Angles 31/4]			
102) Pl. SEE 30.98 [Angles 31/4]			
103) Pl. SEE 30.99 [Angles 31/4]			
104) Pl. SEE 30.100 [Angles 31/4]			

REVOLUTIONS		DESCRIPTION	DATE	BY	APPR
REV	ZONE	ECO	6/12/08	B.D.B.	M.R.F.
AT	-	-	RELEASE NUMBER 016871		

SOLID CONTACT SIZE	SOLID CONTACT PART NUMBERS		WIRE SIZE AVG (mm ²)	RECOMMENDED STRIP LENGTH INCH (mm)	MIN CONTACT RETENTION LBS (N)	REF CRIMP TENSILE LBS (N)	MAX RATED AMPS @ 125°C CONTINUOUS
	PN	SOCKET					
16	AT60-202-16**	AT62-201-16**	16-20 [1.5-0.5]	0.25-0.31 [6.35-7.92]	25 [1111]	35-20 [156-89]	13

S&P CONTACT SIZE	STAMPED CONTACT PART NUMBERS		WIRE SIZE AVG (mm ²)	WIRE INSULATION O.D. RANGE	RECOMMENDED STRIP LENGTH INCH (mm)	MIN CONTACT RETENTION LBS (N)	REF CRIMP TENSILE LBS (N)	MAX RATED AMPS @ 125°C CONTINUOUS
	PN	SOCKET						
16	AT60-14-01**	AT62-14-01**	14-16 [2.0-1.0]	.100 - .150 [2.54 - 3.81]	0.150-0.200 [3.81-5.08]	25 [1111]	25 [1111]	13
16	AT60-16-01**	AT62-16-01**	16-18 [1.0-0.75]	.075 - .100 [1.90 - 2.54]	0.150-0.200 [3.81-5.08]	25 [1111]	25 [1111]	13
16	AT60-16-06**	AT62-16-06**	18-20 [0.75-0.50]	.055 - .095 [1.40 - 2.41]	0.150-0.200 [3.81-5.08]	25 [1111]	25-15 [111+67]	13

CONTACT RESISTANCE STRENGTH (LESS DROP THROUGH WIRE)			
WIRE AWG	TEST CURRENT	MILLIVOLT DROP SOLID	MILLIVOLT DROP S&P
14	18	60	100
16	13	60	100
18	10	60	100
20	7.5	60	100

MATERIAL SPECIFICATION AND PLATING ** CODES	
PN: COPPER ALLOY	
SOCKET: COPPER ALLOY WITH STAINLESS STEEL SLEEVE	
SOLID MACHINED CONTACT PLATING OPTIONS: Δ	31= GOLD*
	141= NICKEL
STAMPED CONTACT PLATING OPTIONS: Δ	22= NICKEL
	44= GOLD*
	89= SELECTIVE GOLD*
GOLD* = PLATING IS AVAILABLE (RECOMMENDED) FOR ONLY (<5V) CIRCUIT APPLICATIONS	
MATERIALS AND PLATINGS ARE ROHS COMPLIANT	

NOTES: UNLESS OTHERWISE SPECIFIED

1. ALL DIMENSIONS ARE INCHES(MM).
2. ALL FORCES ARE IN LBS(POUNDS) AND "N" (NEWTONS).
- Δ CONTACT RETENTION TEST PULL RATE SHALL BE 1.0 INCH/2S. 4) PER MINUTE MAXIMUM. WIRE SIZE WILL AFFECT THE TRUE STRENGTH OF THE CRIMP.
- Δ WIRE SIZES AND INSULATION RANGES ARE FOR REFERENCE ONLY. THE ACTUAL INSULATION RANGE DEPENDS ON CONNECTOR GROMMET SEALING SIZE.

SEE SPECIFICATIONS LISTED BELOW FOR INDIVIDUAL CRIMP INFORMATION:

"SOLID" CONTACTS	SIZE	"STAMPED" CONTACTS	SIZE
	S2-15218		S2-15222
	16		16
			S2-15221
			16/20

- Δ MAXIMUM RATED CURRENT IN CHART DEPENDS ON CONTACT SIZE. ACTUAL RATED CURRENT DEPENDS ON WIRE SIZE.
- Δ CONTACT FACTORY FOR ALL AVAILABLE PLATING ON SPECIFIC CONTACTS.
- Δ AMPHENOL SINE PERFORMANCE SPECIFICATIONS REQUIRE THE USE OF AMPHENOL SINE APPROVED TOOLING.

QUANTITY		PART NUMBER		DESCRIPTION		ITEM
UNLESS OTHERWISE SPECIFIED						
1) All dimensions are in inches.	SIGNATURES	DATE	MATERIALS LIST			
2) Pl. SEE 30.00	DATE	4/5/09	SINE Systems Corporation			
3) Pl. SEE 30.00	ORDERED	6/3/09	A Subsidiary of Amphenol Corporation			
4) Fabrication Standards Per:	ENGINEER	BERNIE	44724 Moley Drive			
5) Pl. SEE 30.00	APPROVAL	6/3/09	Carlton Township, MI 48036			
6) Pl. SEE 30.00	CUSTOMER		GENERAL DATA, CONTACTS			
7) Pl. SEE 30.00	APPROVAL		STAMPED AND FORMED / MACHINED			
8) Pl. SEE 30.00	DATE		SIZE (PICK NUMBER) S2-15217			
9) Pl. SEE 30.00	SCALE		NONE			
10) Pl. SEE 30.00	REVISION		SHEET 1 OF 1			

Компания «Океан Электроники» предлагает заключение долгосрочных отношений при поставках импортных электронных компонентов на взаимовыгодных условиях!

Наши преимущества:

- Поставка оригинальных импортных электронных компонентов напрямую с производств Америки, Европы и Азии, а так же с крупнейших складов мира;
- Широкая линейка поставок активных и пассивных импортных электронных компонентов (более 30 млн. наименований);
- Поставка сложных, дефицитных, либо снятых с производства позиций;
- Оперативные сроки поставки под заказ (от 5 рабочих дней);
- Экспресс доставка в любую точку России;
- Помощь Конструкторского Отдела и консультации квалифицированных инженеров;
- Техническая поддержка проекта, помощь в подборе аналогов, поставка прототипов;
- Поставка электронных компонентов под контролем ВП;
- Система менеджмента качества сертифицирована по Международному стандарту ISO 9001;
- При необходимости вся продукция военного и аэрокосмического назначения проходит испытания и сертификацию в лаборатории (по согласованию с заказчиком);
- Поставка специализированных компонентов военного и аэрокосмического уровня качества (Xilinx, Altera, Analog Devices, Intersil, Interpoint, Microsemi, Actel, Aeroflex, Peregrine, VPT, Syfer, Eurofarad, Texas Instruments, MS Kennedy, Miteq, Cobham, E2V, MA-COM, Hittite, Mini-Circuits, General Dynamics и др.);

Компания «Океан Электроники» является официальным дистрибьютором и эксклюзивным представителем в России одного из крупнейших производителей разъемов военного и аэрокосмического назначения «JONHON», а так же официальным дистрибьютором и эксклюзивным представителем в России производителя высокотехнологичных и надежных решений для передачи СВЧ сигналов «FORSTAR».



JONHON

«JONHON» (основан в 1970 г.)

Разъемы специального, военного и аэрокосмического назначения:

(Применяются в военной, авиационной, аэрокосмической, морской, железнодорожной, горно- и нефтедобывающей отраслях промышленности)

«FORSTAR» (основан в 1998 г.)

ВЧ соединители, коаксиальные кабели, кабельные сборки и микроволновые компоненты:

(Применяются в телекоммуникациях гражданского и специального назначения, в средствах связи, РЛС, а так же военной, авиационной и аэрокосмической отраслях промышленности).



Телефон: 8 (812) 309-75-97 (многоканальный)

Факс: 8 (812) 320-03-32

Электронная почта: ocean@oceanchips.ru

Web: <http://oceanchips.ru/>

Адрес: 198099, г. Санкт-Петербург, ул. Калинина, д. 2, корп. 4, лит. А