

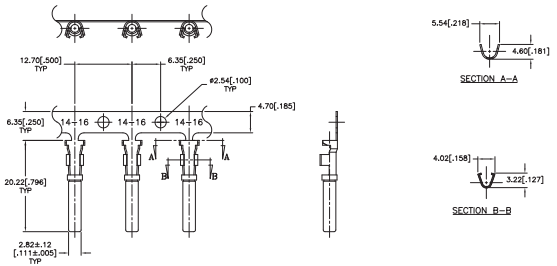
STAMPED AND FORMED CONTACTS, PG 1 of 2

Click on [blue underlined](#) part numbers to be taken to their spec sheets.

OPTIONS

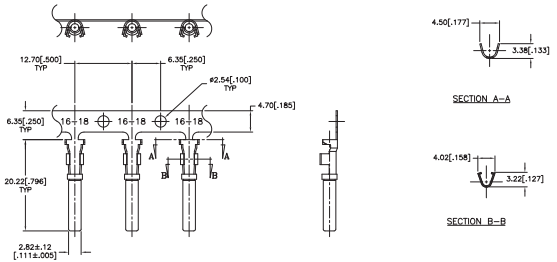
PART NUMBER: [AT62-14-01XX](#)
DESCRIPTION: CONTACT, SOCKET, STAMPED, SIZE 16

MATERIAL:
 CONTACT BODY: COPPER ALLOY
 HOOD: STAINLESS STEEL
PLATING SUFFIX CODE:
 XX=22 NICKEL PLATING
 XX=44 GOLD PLATING
CONTACT GENERAL DATA SPECIFICATION: S2-15217
AVAILABLE CRIMPERS: ATT-16-00, MFX-3950 & MFX-3953
CRIMPER SPECIFICATIONS: S2-15223 & S2-15224
CRIMP INFORMATION DRAWING: S2-15221 & S2-15222
CONTACTS PER REEL: APPROX. 4000 (PARTIAL REELS AVAILABLE)



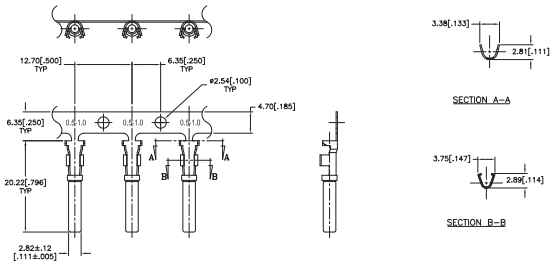
PART NUMBER: [AT62-16-01XX](#)
DESCRIPTION: CONTACT, SOCKET, STAMPED, SIZE 16

MATERIAL:
 CONTACT BODY: COPPER ALLOY
 HOOD: STAINLESS STEEL
PLATING SUFFIX CODE:
 XX=22 NICKEL PLATING
 XX=44 GOLD PLATING
CONTACT GENERAL DATA SPECIFICATION: S2-15217
AVAILABLE CRIMPERS: ATT-16-00, ATT-16-01, MFX-3950 & MFX-3953
CRIMPER SPECIFICATIONS: S2-15223 & S2-15224
CRIMP INFORMATION DRAWING: S2-15221 & S2-15222
CONTACTS PER REEL: APPROX. 4000 (PARTIAL REELS AVAILABLE)



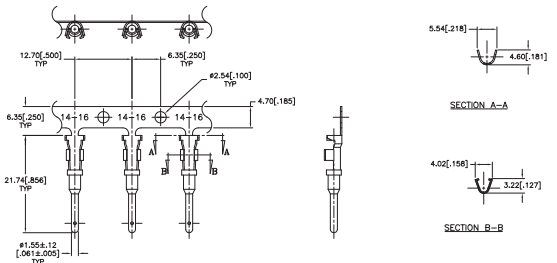
PART NUMBER: [AT62-16-06XX](#)
DESCRIPTION: CONTACT, SOCKET, STAMPED, SIZE 16

MATERIAL:
 CONTACT BODY: COPPER ALLOY
 HOOD: STAINLESS STEEL
PLATING SUFFIX CODE:
 XX=22 NICKEL PLATING
 XX=44 GOLD PLATING
CONTACT GENERAL DATA SPECIFICATION: S2-15217
AVAILABLE CRIMPERS: ATT-16-01, MFX-3950 & MFX-3953
CRIMPER SPECIFICATIONS: S2-15223 & S2-15224
CRIMP INFORMATION DRAWING: S2-15221 & S2-15222
CONTACTS PER REEL: APPROX. 4000 (PARTIAL REELS AVAILABLE)



PART NUMBER: [AT60-14-01XX](#)
DESCRIPTION: CONTACT, PIN, STAMPED, SIZE 16

MATERIAL: COPPER ALLOY
PLATING SUFFIX CODE:
 XX=22 NICKEL PLATING
 XX=44 GOLD PLATING
CONTACT GENERAL DATA SPECIFICATION: S2-15217
AVAILABLE CRIMPERS: ATT-16-00, MFX-3950 & MFX-3953
CRIMPER SPECIFICATIONS: S2-15223 & S2-15224
CRIMP INFORMATION DRAWING: S2-15221 & S2-15222
CONTACTS PER REEL: APPROX. 4000 (PARTIAL REELS AVAILABLE)

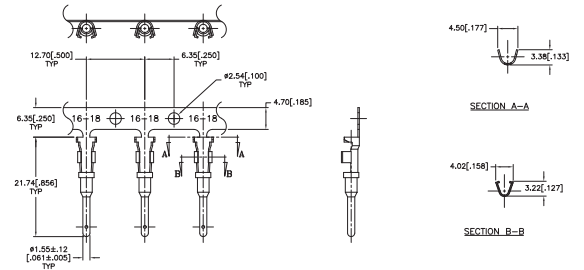


STAMPED AND FORMED CONTACTS, PG 2 of 2

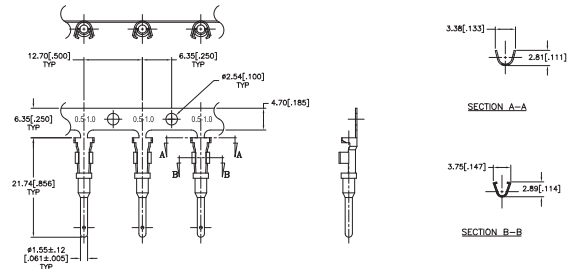
Click on [blue underlined part numbers](#) to be taken to their spec sheets.

OPTIONS

PART NUMBER: [AT60-16-01XX](#)
DESCRIPTION: CONTACT, PIN, STAMPED, SIZE 16
MATERIAL: COPPER ALLOY
PLATING SUFFIX CODE:
 XX=22 NICKEL PLATING
 XX=44 GOLD PLATING
CONTACT GENERAL DATA SPECIFICATION: S2-15217
AVAILABLE CRIMPERS: ATT-16-00, ATT-16-01, MFX-3950 & MFX-3953
CRIMPER SPECIFICATIONS: S2-15223 & S2-15224
CRIMP INFORMATION DRAWING: S2-15221 & S2-15222
CONTACTS PER REEL: APPROX. 4000 (PARTIAL REELS AVAILABLE)



PART NUMBER: [AT60-16-06XX](#)
DESCRIPTION: CONTACT, PIN, STAMPED, SIZE 16
MATERIAL: COPPER ALLOY
PLATING SUFFIX CODE:
 XX=22 NICKEL PLATING
 XX=44 GOLD PLATING
CONTACT GENERAL DATA SPECIFICATION: S2-15217
AVAILABLE CRIMPERS: ATT-16-01, MFX-3950 & MFX-3953
CRIMPER SPECIFICATIONS: S2-15223 & S2-15224
CRIMP INFORMATION DRAWING: S2-15221 & S2-15222
CONTACTS PER REEL: APPROX. 4000 (PARTIAL REELS AVAILABLE)



SOLID/MACHINED CONTACTS

Click on [blue underlined part numbers](#) to be taken to their spec sheets.

OPTIONS

MILITARY-STYLE

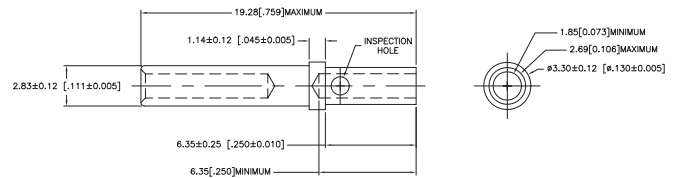
PART NUMBER: [AT60-202-16XX](#)
DESCRIPTION: CONTACT, PIN, SOLID MACHINED, SIZE 16
MATERIAL: COPPER ALLOY
PLATING SUFFIX CODE:
 XX=141 NICKEL PLATING
 XX=31 GOLD PLATING
CONTACT GENERAL DATA SPECIFICATION: S2-15217
AVAILABLE CRIMPERS: CA-5D12 & CA-5E12
CRIMPER SPECIFICATIONS: S2-15219 & S2-15220
CRIMP INFORMATION DRAWING: S2-15218



PART NUMBER: [AT62-201-16XX](#)
DESCRIPTION: CONTACT, SOCKET, SOLID MACHINED, SIZE 16
MATERIAL:
 CONTACT BODY: COPPER ALLOY
 HOOD: STAINLESS STEEL
PLATING SUFFIX CODE:
 XX=141 NICKEL PLATING
 XX=31 GOLD PLATING
CONTACT GENERAL DATA SPECIFICATION: S2-15217
AVAILABLE CRIMPERS: CA-5D12 & CA-5E12
CRIMPER SPECIFICATIONS: S2-15219 & S2-15220
CRIMP INFORMATION DRAWING: S2-15218



PART NUMBER: [65-54942-14](#)
DESCRIPTION: CONTACT, SOCKET, ROCKSOLID, SIZE 16
AWG RANGE: 14AWG
MATERIAL: COPPER ALLOY
PLATING: GOLD
CONTACT GENERAL DATA SPECIFICATION: S2-15217
AVAILABLE CRIMPERS: CA-5D12 & CA-5E12
CRIMPER SPECIFICATIONS: S2-15219 & S2-15220
CRIMP INFORMATION DRAWING: S2-15218

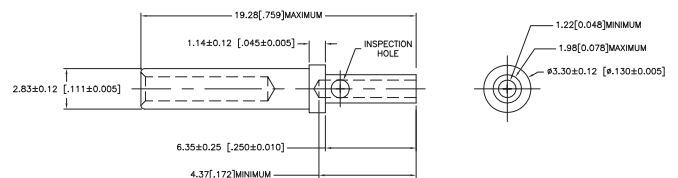


ROCKSOLID™ CONTACTS

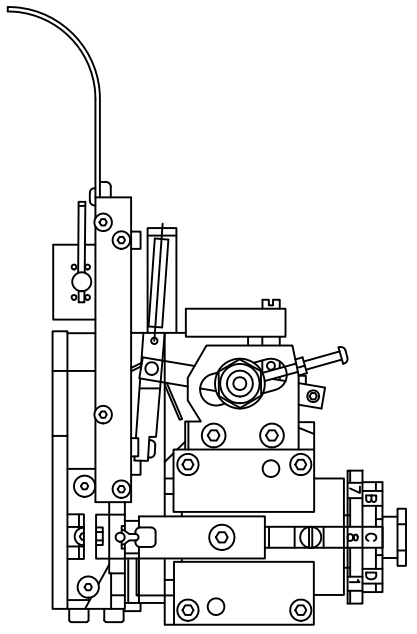
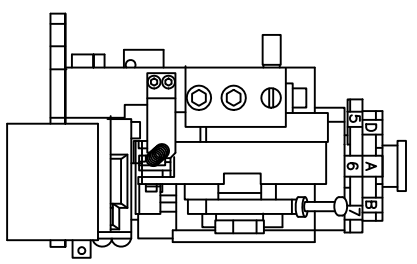
PART NUMBER: [65-54942-16](#)
DESCRIPTION: CONTACT, SOCKET, ROCKSOLID, SIZE 16
AWG RANGE: 16AWG
MATERIAL: COPPER ALLOY
PLATING: GOLD
CONTACT GENERAL DATA SPECIFICATION: S2-15217
AVAILABLE CRIMPERS: CA-5D12 & CA-5E12
CRIMPER SPECIFICATIONS: S2-15219 & S2-15220
CRIMP INFORMATION DRAWING: S2-15218



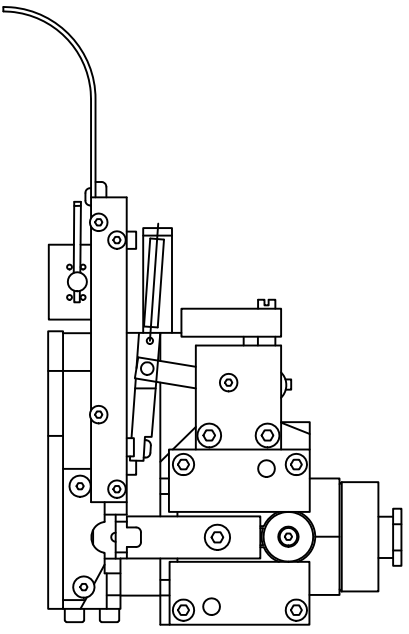
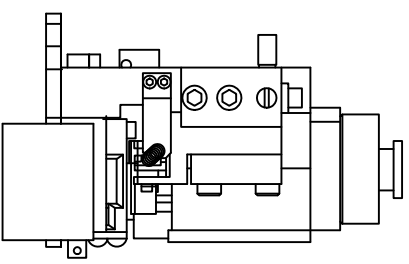
PART NUMBER: [65-54942-20](#)
DESCRIPTION: CONTACT, SOCKET, ROCKSOLID, SIZE 16
AWG RANGE: 20AWG
MATERIAL: COPPER ALLOY
PLATING: GOLD
CONTACT GENERAL DATA SPECIFICATION: S2-15217
AVAILABLE CRIMPERS: CA-5D12 & CA-5E12
CRIMPER SPECIFICATIONS: S2-15219 & S2-15220
CRIMP INFORMATION DRAWING: S2-15218



REVOLUTIONS		DESCRIPTION	DATE	BY	APPR
REV	ZONE	ECO	RELEASE NUMBER	B.D.B.	M.R.F.
A1	-	-	016571	6/12/08	



SINE PART NUMBER	MFX-3950
DEUTSCH PART NUMBER	DCT16-02-00
TYCO PART NUMBER	1-3-1385344-1, 2, 3, 4, 5 & 7



SINE PART NUMBER	MFX-3953
DEUTSCH PART NUMBER	DCT1620-02-00

ALL REFERENCES TO DEUTSCH PRODUCTS OR SPECIFICATIONS ARE FOR COMPARISON PURPOSES ONLY, AND REFER TO DEUTSCH INDUSTRIAL PRODUCTS.
 ALL REFERENCES TO TYCO PRODUCTS OR SPECIFICATIONS ARE FOR COMPARISON PURPOSES ONLY, AND REFER TO TYCO ELECTRONICS.

QUANTITY	PART NUMBER	DESCRIPTION	ITEM
MATERIALS LIST			
UNLESS OTHERWISE SPECIFIED			
1) All dimensions are in inches.			
2) Pl. DEC 30.00			
3) Pl. DEC 30.00			
4) Pl. DEC 30.00			
5) Production Standard Per:			
a) MIL-STD-20020			
b) MIL-STD-20020			
c) MIL-STD-20020			
d) MIL-STD-20020			
e) MIL-STD-20020			
f) MIL-STD-20020			
g) MIL-STD-20020			
h) MIL-STD-20020			
i) MIL-STD-20020			
j) MIL-STD-20020			
k) MIL-STD-20020			
l) MIL-STD-20020			
m) MIL-STD-20020			
n) MIL-STD-20020			
o) MIL-STD-20020			
p) MIL-STD-20020			
q) MIL-STD-20020			
r) MIL-STD-20020			
s) MIL-STD-20020			
t) MIL-STD-20020			
u) MIL-STD-20020			
v) MIL-STD-20020			
w) MIL-STD-20020			
x) MIL-STD-20020			
y) MIL-STD-20020			
z) MIL-STD-20020			
A1			

REVISIONS					
REV	ECO	DESCRIPTION	DATE	BY	APPR
A1	-	RELEASE NUMBER 016571	6/12/09	B.D.B.	M.R.F.

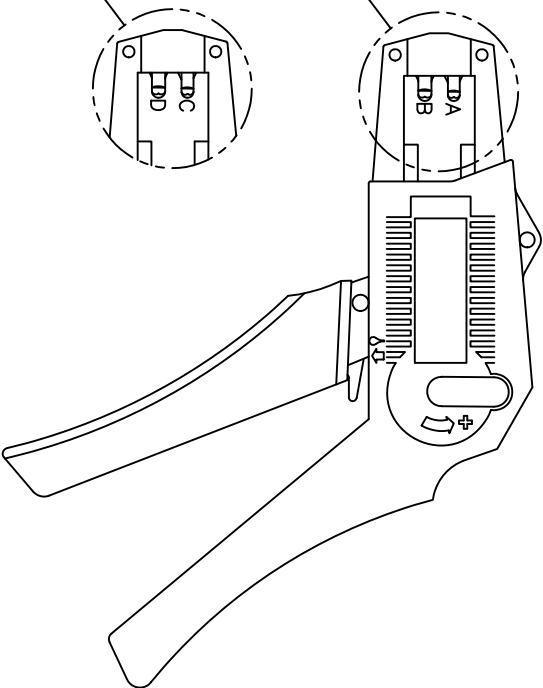
USE CRIMPER NUMBER:
ATT-16-00 WITH CAVITY A & B

CONTACT P/N:	INSULATION ϕ	CAVITY	WIRE SIZE
AT60-16-01**	.075 - .140	B	1.5mm ²
AT62-16-01**	[1.91 - 3.56]	A	16AWG
		A	1.0mm ²
AT60-14-01**	.095 - .150	B	14AWG
AT62-14-01**	[2.41 - 3.81]	B	2.0mm ²
		B	1.5mm ²
		A	1.5mm ²
		A	16AWG
		A	1.0mm ²
AT60-16-06**	.055 - .100	A	16AWG
AT62-16-06**	[1.40 - 2.54]	A	1.0mm ²

USE CRIMPER NUMBER:
ATT-16-01 WITH CAVITY C & D

CONTACT P/N:	INSULATION ϕ	CAVITY	WIRE SIZE
AT60-16-01**	.075 - .140	D	18AWG
AT62-16-01**	[1.91 - 3.56]	D	.75mm ²
AT60-16-06**	.055 - .100	D	18AWG
AT62-16-06**	[1.40 - 2.54]	D	.75mm ²
		C	.50mm ²

CAVITY VIEW OF
CRIMPER NUMBER
ATT-16-01



CAVITY VIEW OF
CRIMPER NUMBER
ATT-16-00

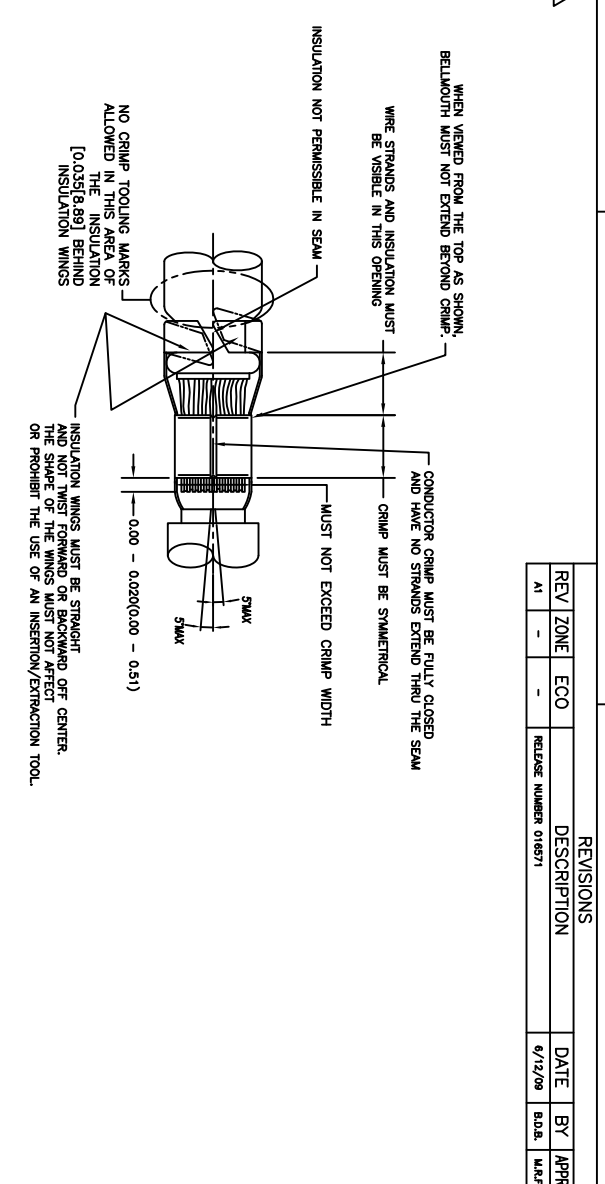
ALL REFERENCES TO DEUTSCH PRODUCTS OR SPECIFICATIONS ARE FOR COMPARISON PURPOSES ONLY, AND REFER TO DEUTSCH INDUSTRIAL PRODUCTS.

- NOTES (UNLESS OTHERWISE SPECIFIED):
- ALL DIMENSIONS IN INCHES [MILLIMETERS]
 - FOR PLATING CODES ** SEE CONTACT DATA DRAWINGS.
 - THIS TOOL IS FOR CRIMPING SIZE 16 CONTACTS ONLY TO WIRES LISTED IN THE CHARTS.
 - DEUTSCH IPD CROSS REFERENCE PART NUMBERS ARE DTT-16-00 AND DTT-16-01.

QUANTITY	PART NUMBER	DESCRIPTION	ITER#
	MATERIALS LIST		
SINE Systems Corporation A Subsidiary of Amphenol Corporation 44724 Morley Drive Clifton Township, NJ 08036 INSTRUCTIONS: ATT-16-00 & 01 CRIMPER, HAND, STAMPED CONTACTS			
UNLESS OTHERWISE SPECIFIED	SIGNATURES	DATE	
1) All dimensions are in inches.	ENGINEER: BERNIM	6/8/09	
2) Tolerances are as follows: 3) Finish: DEC 3000	DESIGNER: FORCE	6/8/09	
4) Hole Reference = A	APPROVAL: BERNIM	6/8/09	
PROCESS SPECIFICATIONS	CUSTOMER:		
N/A			
THE USE OF THIS DOCUMENT IS UNLIMITED DESIGN FEATURES, SPECIFIC DATA SHOWN HEREON ARE THE PROPERTY OF AMPHENOL CORP. ALL DIMENSIONS AND TOLERANCES ARE TO UNLESS NOTED OTHERWISE. DOCUMENTS REFERENCED HEREON MAY CONTAIN UNLIMITED VARIATIONS.			
SCALE: NONE	SIZE: FSCM NO/DWG NO:	S2-15223	REVISION
			A1
		S2-15223	1
			1

REVIEWS		DESCRIPTION	DATE	BY	APP
REV	ZONE	ECO	RELEASE NUMBER	B.D.B.	M.F.F.
1	-	-	016871	6/12/08	

STAMPED CONTACT PART NUMBER 106=PIN 106=SOCKET	SIZE	CONDUCTOR WIRE SIZE	CRIMP HEIGHT	CRIMP WIDTH	CONDUCTOR PUNCH NUMBER	CONDUCTOR ANVIL NUMBER	CRIMP TENSILE REFERENCE
A780-14-011x A782-14-011x INSULATION RANGE 0.095-0.150(2.41-3.81)	16	14 AWG 2.00mm ² 1.50mm ² 16 AWG 1.00mm ² 18 AWG 0.75mm ²	0.055(1.40) 0.055(1.40) 0.055(1.39) 0.050(1.27) 0.049(1.24) 0.048(1.22)	±0.003 INCH [±0.08 mm]	AT17-002-0200 AT17-101-0200	AT17-101-0200	28(111) 28(111)
A780-16-011x A782-16-011x INSULATION RANGE 0.075-0.140(1.91-3.56)	16	16 AWG 1.00mm ² 18 AWG 0.75mm ²	0.050(1.27) 0.051(1.30) 0.050(1.27) 0.049(1.24)	±0.003 INCH [±0.08 mm]	AT17-002-0200 AT17-101-0200	AT17-101-0200	28(111) 28(111)
A780-18-011x A782-18-011x INSULATION RANGE 0.055-0.100(1.40-2.54)	16	18 AWG 1.00mm ² 20 AWG 0.50mm ²	0.050(1.27) 0.049(1.24) 0.048(1.22) 0.045(1.14)	±0.003 INCH [±0.08 mm]	AT17-003-0200 AT17-103-0200	AT17-103-0200	28(111) 15(67)



CROSS REFERENCE

SINE PART NUMBER	DEUTSCH PART NUMBER
MX-3950	DC116-02-00
AT17-002-0200	1017-002-0200
AT17-003-0200	1017-003-0200
AT17-101-0200	1017-101-0200
AT17-103-0200	1017-103-0200
AT17-210-0200	1017-210-0200
AT17-211-0200	1017-211-0200
AT17-213-0200	1017-213-0200
AT17-214-0200	1017-214-0200
AT17-217-0200	1017-217-0200
AT17-218-0200	1017-218-0200
AT17-310-0200	1017-310-0200
AT17-311-0200	1017-311-0200
AT17-313-0200	1017-313-0200
AT17-304-0200	1017-304-0200
AT17-317-0200	1017-317-0200
AT17-318-0200	1017-318-0200

INSULATION DIAMETER RANGE	INSULATION PUNCH NUMBER	INSULATION ANVIL NUMBER
0.120-0.150 [3.05-3.81]	AT17-210-0200	AT17-310-0200
0.105-0.125 [2.67-3.18]	AT17-211-0200	AT17-311-0200
0.085-0.111 [2.16-2.82]	AT17-213-0200	AT17-313-0200
0.075-0.105 [1.91-2.67]	AT17-214-0200	AT17-304-0200
0.065-0.094 [1.62-2.39]	AT17-217-0200	AT17-317-0200
0.050-0.075 [1.27-1.91]	AT17-218-0200	AT17-318-0200

NOTES: UNLESS OTHERWISE SPECIFIED

1. ALL DIMENSIONS ARE IN INCHES(mm).
2. FORCES ARE IN POUNDS(LBS) AND NEWTONS(N).
3. "X"= PLATING SUFFIX. SEE INDIVIDUAL CONTACT DRAWING.
4. WIRE STRIP LENGTH: 0.775±0.029(4.45±0.54). BROKEN OR MISSING CONDUCTOR STRANDS ARE NOT ACCEPTABLE.
5. USE A BLADE MICROMETER (0.100(2.54) MIN SPACING AND 0.060(0.010(1.50)(0.040) ANVIL) TO MEASURE THE CONDUCTOR CRIMP. SEE SECTION AA.
6. CRIMP TENSILE STRENGTH IS DETERMINED AT A PULL RATE SPEED OF 1.00 INCH(25.4) PER MINUTE. INSULATION WINGS ARE REMOVED FOR TEST. ACTUAL CRIMP TENSILE STRENGTH DEPENDS ON WIRE/CONDUCTOR SIZE. VALUES ON THIS SPECIFICATION ARE FOR REFERENCE ONLY.
7. INSULATION DIAMETER RANGE IS DETERMINED BY CONNECTOR AND ITS WIRE SEAL SIZE. SEE CONNECTOR DRAWING FOR INSULATION RANGE.
8. INSULATION CRIMP DIAMETER SHOULD BE THE EQUAL OR LESS THAN THE DIAMETER OF THE WIRE INSULATION (HARD OR TEFION INSULATION MAY BE AN EXCEPTION). INSULATION CRIMP SHALL NOT AFFECT REMOVAL TOOL PERFORMANCE AND SHALL NOT DAMAGE CONNECTOR BROWNIE SEAL.
9. CONDUCTOR TYPE ARE PER SAE J1128(AWG) AND ISO 6722(METRIC)
10. FOR CONTACT MATERIAL AND PERFORMANCE DATA, SEE DRAWING S2-15217.
11. REFER TO S2-15223 AND S2-15224 AND CROSS REFERENCE CHARTS FOR CRIMP TOOL DATA.

ALL REFERENCES TO DEUTSCH PRODUCTS OR SPECIFICATIONS ARE FOR COMPARISON PURPOSES ONLY, AND REFER TO DEUTSCH INDUSTRIAL PRODUCTS.

QUANTITY	PART NUMBER	MATERIALS LIST	DESCRIPTION	ITEM
UNLESS OTHERWISE SPECIFIED		SIGNATURES	DATE	
1) All dimensions are in inches.		DRAWN: POTER	4/7/09	
2) All tolerances are per ASME Y14.5.		CHECKED: RONE	6/8/09	
3) Plating standards per ASME Y14.5.		ENGINEER: BERLIN	6/8/09	
4) Plating standards per ASME Y14.5.		APPROVAL: BERLIN	6/8/09	
5) Plating standards per ASME Y14.5.		CUSTOMER:		
6) Plating standards per ASME Y14.5.		PROCESS SPECIFICATIONS:		
7) Plating standards per ASME Y14.5.		THE USE OF THIS DRAWING IS SPECIFIC TO THE PART AND PERFORMANCE DATA. ANY CHANGES TO THIS DRAWING MUST BE APPROVED BY THE ORIGINAL DESIGNER AND THE CUSTOMER. ALL DIMENSIONS ARE IN UNLESS OTHERWISE SPECIFIED.		
8) Plating standards per ASME Y14.5.		SIZE: (PUNCH NUMBER) S2-15222		
9) Plating standards per ASME Y14.5.		SCALE: NONE		
10) Plating standards per ASME Y14.5.		CRIMP DATA, STAMPED CONTACTS FOR CRIMPER MFX-3950		
11) Plating standards per ASME Y14.5.		REVISION: A1		
12) Plating standards per ASME Y14.5.		SHEET: 1 OF 1		

CRIMP DATA, STAMPED CONTACTS
DWG NO: S2-15222
REV: A1
DATE: 6/8/09

A Subsidiary of Amphenol Corporation
44724 Moley Drive
Clinton Township, MI 48036

CRIMP DATA, STAMPED CONTACTS FOR CRIMPER MFX-3950

REVISION: A1

SHEET: 1 OF 1

DATE: 6/8/09

SCALE: NONE

SIZE: (PUNCH NUMBER) S2-15222

PROCESS SPECIFICATIONS:

THE USE OF THIS DRAWING IS SPECIFIC TO THE PART AND PERFORMANCE DATA. ANY CHANGES TO THIS DRAWING MUST BE APPROVED BY THE ORIGINAL DESIGNER AND THE CUSTOMER. ALL DIMENSIONS ARE IN UNLESS OTHERWISE SPECIFIED.

CUSTOMER:

APPROVAL: BERLIN 6/8/09

ENGINEER: BERLIN

CHECKED: RONE 6/8/09

DRAWN: POTER 4/7/09

SIGNATURES

DATE

DESCRIPTION

MATERIALS LIST

PART NUMBER

QUANTITY

UNLESS OTHERWISE SPECIFIED

1) All dimensions are in inches.

2) All tolerances are per ASME Y14.5.

3) Plating standards per ASME Y14.5.

4) Plating standards per ASME Y14.5.

5) Plating standards per ASME Y14.5.

6) Plating standards per ASME Y14.5.

7) Plating standards per ASME Y14.5.

8) Plating standards per ASME Y14.5.

9) Plating standards per ASME Y14.5.

10) Plating standards per ASME Y14.5.

11) Plating standards per ASME Y14.5.

12) Plating standards per ASME Y14.5.

REV	ZONE	ECO	DESCRIPTION	DATE	BY	APP
A1	-	-	RELEASE NUMBER 016971	6/12/09	B.D.B.	M.F.F.

STAMPED CONTACT PART NUMBER 1009-FIN 1009-SOCKET	SIZE	CONDUCTOR WIRE SIZE	CRIMP HEIGHT +0.001/+0.002 INCH (+0.025/+0.05 mm)	CRIMP WIDTH ±0.003 INCH (±0.08 mm)	CONDUCTOR PUNCH NUMBER	CONDUCTOR ANVIL NUMBER	CRIMP TENSILE REFERENCE (LBS/IN)
A160-14-011x A162-14-011x INSULATION RANGE 0.095-0.150(2.41-3.81)	16	14 AWG	0.055(1.40)	0.094(2.39)			
		2.00mm ²	0.051(1.40)	0.094(2.39)			
		1.50mm ²	0.051(1.29)	0.094(2.39)	A117-408-0200	A117-183-0200	29(111)
		1.00mm ²	0.050(1.27)	0.094(2.39)			
A160-16-011x A162-16-011x INSULATION RANGE 0.075-0.140(1.91-3.59)	16	14 AWG	0.051(1.40)	0.094(2.39)			
		2.00mm ²	0.051(1.40)	0.094(2.39)			
		1.50mm ²	0.051(1.29)	0.094(2.39)	A117-408-0200	A117-183-0200	29(111)
		1.00mm ²	0.050(1.27)	0.094(2.39)			
A160-18-069x A162-18-069x INSULATION RANGE 0.055-0.100(1.40-2.54)	16	16 AWG	0.050(1.27)	0.079(2.01)			
		1.00mm ²	0.049(1.24)	0.079(2.01)	A117-408-0200	A117-182-0200	29(111)
		0.75mm ²	0.048(1.22)	0.079(2.01)			
		0.50mm ²	0.046(1.14)	0.079(2.01)			19(67)

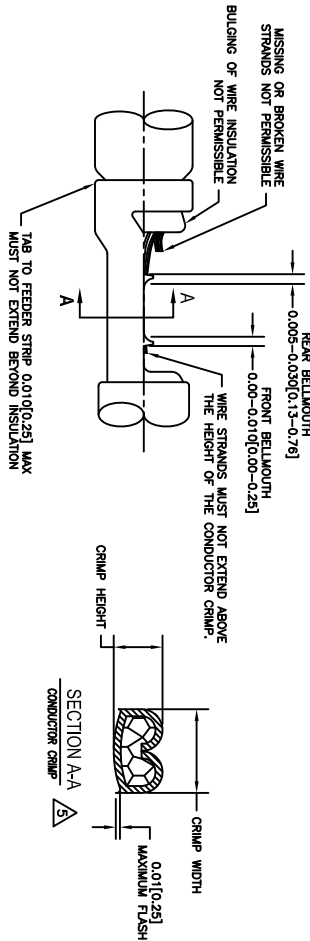
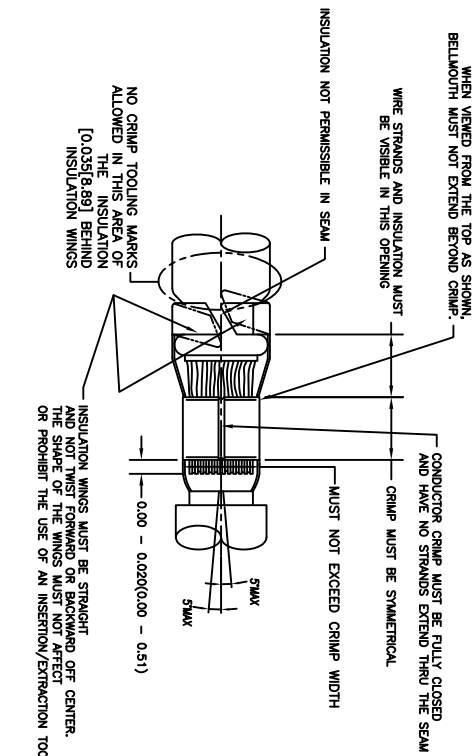
CROSS REFERENCE

INSULATION DIAMETER RANGE	INSULATION PUNCH NUMBER	INSULATION ANVIL NUMBER
0.120-0.150 [3.05-3.81]	A117-225-0200	A117-326-0200
0.105-0.125 [2.67-3.18]	A117-226-0200	A117-326-0200
0.085-0.111 [2.16-2.82]	A117-227-0200	A117-327-0200
0.075-0.105 [1.91-2.67]	A117-228-0200	A117-328-0200
0.063-0.094 [1.62-2.39]	A117-229-0200	A117-328-0200
0.050-0.075 [1.27-1.91]	A117-230-0200	A117-330-0200

SINE PART NUMBER	DEUTSCH PART NUMBER
MFX-3953	DCT1620-02-00
A117-083-0200	1017-083-0200
A117-082-0200	1017-082-0200
A117-183-0200	1017-183-0200
A117-182-0200	1017-182-0200
A117-225-0200	1017-225-0200
A117-226-0200	1017-226-0200
A117-227-0200	1017-227-0200
A117-228-0200	1017-228-0200
A117-229-0200	1017-229-0200
A117-230-0200	1017-230-0200
A117-325-0200	1017-325-0200
A117-326-0200	1017-326-0200
A117-327-0200	1017-327-0200
A117-328-0200	1017-328-0200
A117-329-0200	1017-329-0200
A117-330-0200	1017-330-0200

NOTES: UNLESS OTHERWISE SPECIFIED

1. ALL DIMENSIONS ARE IN INCHES(mm).
2. FORCES ARE IN POUNDS(LBS) AND NEWTONS(N).
3. "X"= PLATING SUFFIX. SEE INDIVIDUAL CONTACT DRAWING.
4. WIRE STRIP LENGTH: 0.175±0.02(4.45±0.54). BROKEN OR MISSING CONDUCTOR STRANDS ARE NOT ACCEPTABLE. USE A BLADE MICROMETER (0.100(2.54) MIN SPINDLE AND 0.060(0.010(1.50)(0.040) ANVIL) TO MEASURE THE CONDUCTOR CRIMP. SEE SECTION AA.
5. CRIMP TENSILE STRENGTH IS DETERMINED AT A PULL RATE SPEED OF 1.00 INCH(25.4) PER MINUTE. INSULATION WINGS ARE REMOVED FOR TEST. ACTUAL CRIMP TENSILE STRENGTH DEPENDS ON WIRE/CONDUCTOR SIZE. VALUES ON THIS SPECIFICATION ARE FOR REFERENCE ONLY.
6. INSULATION DIAMETER RANGE IS DETERMINED BY CONNECTOR AND ITS WIRE SEAL SIZE. SEE CONNECTOR DRAWING FOR INSULATION RANGE.
7. INSULATION CRIMP DIAMETER SHOULD BE THE EQUAL OR LESS THAN THE DIAMETER OF THE WIRE INSULATION (HARD OR TEFLON INSULATION MAY BE AN EXCEPTION). INSULATION CRIMP SHALL NOT AFFECT REMOVAL TOOL PERFORMANCE AND SHALL NOT DAMAGE CONNECTOR GROMMET SEAL.
8. CONDUCTOR TYPE ARE PER SAEU1128(AWG) AND ISO 6122(METRIC)
9. FOR CONTACT MATERIAL AND PERFORMANCE DATA. SEE DRAWING S2-15217.
10. REFER TO S2-15223 AND S2-15224 AND CROSS REFERENCE CHARTS FOR CRIMP TOOL DATA.

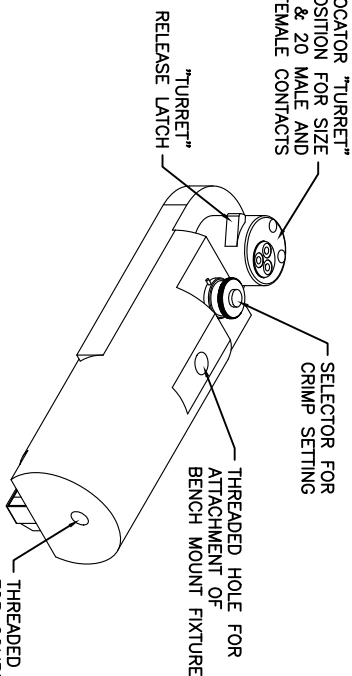
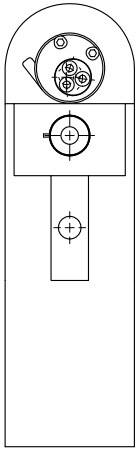


ALL REFERENCES TO DEUTSCH PRODUCTS OR SPECIFICATIONS ARE FOR COMPARISON PURPOSES ONLY, AND REFER TO DEUTSCH INDUSTRIAL PRODUCTS.

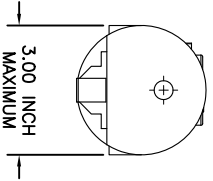
QUANTITY	PART NUMBER	DESCRIPTION	ITEM
UNLESS OTHERWISE SPECIFIED			
1) All dimensions are in inches.			
2) Reference Standard: Per: Mils. Alpha S1*			
3) Production Standard: Per: Mils. Alpha S1*			
4) Mark: S2-20020			
MATERIAL SPECIFICATIONS:			
MATERIAL SPECIFICATIONS: NA			
PROCESS SPECIFICATIONS:			
THE USE OF THIS DRAWING IS SPECIFIC TO THE DESIGN AND PERFORMANCE OF THE PART. ALL DIMENSIONS ARE SUBJECT TO NORMAL DOCUMENTS REFERENCED HEREON UNLESS OTHERWISE NOTED.			
CUSTOMER: APPROVAL: BERNUM 6/8/09			
ENGINEER: BERNUM			
DATE: 4/7/09			
DRAWN: POTT			
CHECKED: POTT 6/8/09			
SINE SYSTEMS CORPORATION A Subsidiary of Amphenol Corporation 44724 Moley Drive Clinton Township, MI 48036			
CRIMP DATA, STAMPED CONTACTS FOR CRIMPER MFX-3953			
SIZE: 16 AWG			
SCALE: NONE			
S2-15221			
SHEET 1 OF 1			

REVOLUTIONS		DESCRIPTION	DATE	BY	APPR
REV	ZONE	ECO	RELEASE NUMBER 016571	B.D.B.	M.R.F.
1	-	-	6/12/09		

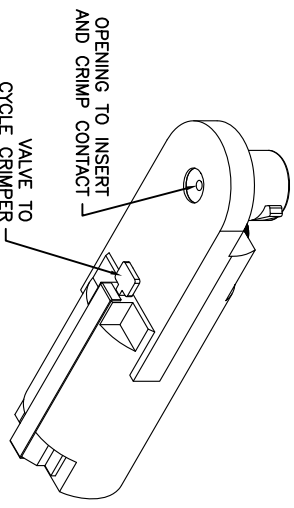
CONTACT LOCATOR "TURRET"
THREE POSITION FOR SIZE
12, 16 & 20 MALE AND
FEMALE CONTACTS



THREADED OPENING
FOR COMPRESSED
AIR FITTING



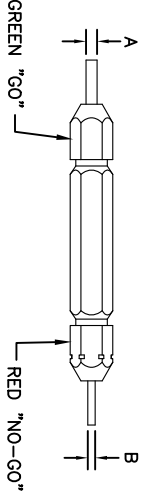
- NOTES:
1. THE CA-5E12 IS A COMPRESSED AIR OPERATED HAND CRIMPER FOR ELECTRICAL CONTACTS. IT IS ADJUSTABLE TO 3 CONTACT SIZES (12, 16 & 20) AND 8 INDENTER CRIMP POSITIONS FOR DIFFERENT WIRE SIZES (12AWG THRU 26 AWG).
 2. 80-120 PSI COMPRESSED AIR.
 3. WEIGHT: 3.1 LBS
 4. SELECTING CONTACT SIZE: PRESS THE RELEASE LATCH ON SIDE OF THE CONTACT LOCATOR "TURRET". ROTATE TO THE DESIRED CONTACT SIZE. THE TOP OF THE "TURRET" IS EMBOSSED WITH THE CONTACT SIZES.
 5. SELECTING WIRE SIZE: GRASP THE SELECTOR AND ROTATE TO THE DESIRED NUMBER.



GAGE PART NO.	A GO DIA.	B NO-GO DIA.	SELECTOR NUMBER
G125	.0390	.0440	4

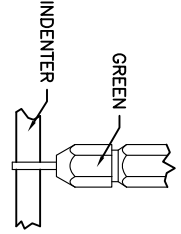
GAGING INSTRUCTIONS

CAUTION!
DO NOT CRIMP GAGE!

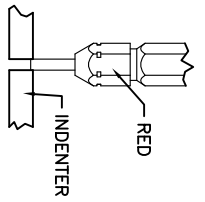


"GO" GAGING: OPERATE TOOL TO FULLY CLOSED POSITION. INSERT "GO" GAGE END AS SHOWN. GAGE MUST PASS FREELY BETWEEN INDENTER TIPS.

"NO-GO" GAGING: OPERATE TOOL TO FULLY CLOSED POSITION. INSERT "NO-GO" GAGE END AS SHOWN. THE "NO-GO" MAY PARTIALLY ENTER THE INDENTER OPENING, BUT MUST NOT PASS COMPLETELY THROUGH THE OPENING.



SELECTOR NUMBER	A GO DIA.	B NO-GO DIA.
1	.0280	.0330
2	.0320	.0370
3	.0360	.0410
4	.0390	.0440
5	.0450	.0500
6	.0520	.0570
7	.0590	.0640
8	.0880	.0730



CONTACT SIZE	LOCATOR "TURRET" POSITION	WIRE COLOR	SELECTOR NUMBER
20-20	RED	1	2
16-22	BLUE	4	5
16-20	BLUE	1	2
16-16	BLUE	4	5
12-16	YELLOW	4	5
12-12	YELLOW		7
			8

MATERIALS LIST

QUANTITY	PART NUMBER	DESCRIPTION	ITEM

UNLESS OTHERWISE SPECIFIED:
 1) All dimensions are in inches.
 2) Pl. DEC 2000
 3) Pl. DEC 2000
 4) Pl. DEC 2000
 5) Revision Standard Per: A
 6) Rev. SS-20020
 7) Material Specification:
 8) Material Specification:
 9) Material Specification:
 10) Material Specification:
 11) Material Specification:
 12) Material Specification:
 13) Material Specification:
 14) Material Specification:
 15) Material Specification:
 16) Material Specification:
 17) Material Specification:
 18) Material Specification:
 19) Material Specification:
 20) Material Specification:
 21) Material Specification:
 22) Material Specification:
 23) Material Specification:
 24) Material Specification:
 25) Material Specification:
 26) Material Specification:
 27) Material Specification:
 28) Material Specification:
 29) Material Specification:
 30) Material Specification:
 31) Material Specification:
 32) Material Specification:
 33) Material Specification:
 34) Material Specification:
 35) Material Specification:
 36) Material Specification:
 37) Material Specification:
 38) Material Specification:
 39) Material Specification:
 40) Material Specification:
 41) Material Specification:
 42) Material Specification:
 43) Material Specification:
 44) Material Specification:
 45) Material Specification:
 46) Material Specification:
 47) Material Specification:
 48) Material Specification:
 49) Material Specification:
 50) Material Specification:
 51) Material Specification:
 52) Material Specification:
 53) Material Specification:
 54) Material Specification:
 55) Material Specification:
 56) Material Specification:
 57) Material Specification:
 58) Material Specification:
 59) Material Specification:
 60) Material Specification:
 61) Material Specification:
 62) Material Specification:
 63) Material Specification:
 64) Material Specification:
 65) Material Specification:
 66) Material Specification:
 67) Material Specification:
 68) Material Specification:
 69) Material Specification:
 70) Material Specification:
 71) Material Specification:
 72) Material Specification:
 73) Material Specification:
 74) Material Specification:
 75) Material Specification:
 76) Material Specification:
 77) Material Specification:
 78) Material Specification:
 79) Material Specification:
 80) Material Specification:
 81) Material Specification:
 82) Material Specification:
 83) Material Specification:
 84) Material Specification:
 85) Material Specification:
 86) Material Specification:
 87) Material Specification:
 88) Material Specification:
 89) Material Specification:
 90) Material Specification:
 91) Material Specification:
 92) Material Specification:
 93) Material Specification:
 94) Material Specification:
 95) Material Specification:
 96) Material Specification:
 97) Material Specification:
 98) Material Specification:
 99) Material Specification:
 100) Material Specification:

PROCESS SPECIFICATIONS:
 1) All dimensions are in inches.
 2) Pl. DEC 2000
 3) Pl. DEC 2000
 4) Pl. DEC 2000
 5) Revision Standard Per: A
 6) Rev. SS-20020
 7) Material Specification:
 8) Material Specification:
 9) Material Specification:
 10) Material Specification:
 11) Material Specification:
 12) Material Specification:
 13) Material Specification:
 14) Material Specification:
 15) Material Specification:
 16) Material Specification:
 17) Material Specification:
 18) Material Specification:
 19) Material Specification:
 20) Material Specification:
 21) Material Specification:
 22) Material Specification:
 23) Material Specification:
 24) Material Specification:
 25) Material Specification:
 26) Material Specification:
 27) Material Specification:
 28) Material Specification:
 29) Material Specification:
 30) Material Specification:
 31) Material Specification:
 32) Material Specification:
 33) Material Specification:
 34) Material Specification:
 35) Material Specification:
 36) Material Specification:
 37) Material Specification:
 38) Material Specification:
 39) Material Specification:
 40) Material Specification:
 41) Material Specification:
 42) Material Specification:
 43) Material Specification:
 44) Material Specification:
 45) Material Specification:
 46) Material Specification:
 47) Material Specification:
 48) Material Specification:
 49) Material Specification:
 50) Material Specification:
 51) Material Specification:
 52) Material Specification:
 53) Material Specification:
 54) Material Specification:
 55) Material Specification:
 56) Material Specification:
 57) Material Specification:
 58) Material Specification:
 59) Material Specification:
 60) Material Specification:
 61) Material Specification:
 62) Material Specification:
 63) Material Specification:
 64) Material Specification:
 65) Material Specification:
 66) Material Specification:
 67) Material Specification:
 68) Material Specification:
 69) Material Specification:
 70) Material Specification:
 71) Material Specification:
 72) Material Specification:
 73) Material Specification:
 74) Material Specification:
 75) Material Specification:
 76) Material Specification:
 77) Material Specification:
 78) Material Specification:
 79) Material Specification:
 80) Material Specification:
 81) Material Specification:
 82) Material Specification:
 83) Material Specification:
 84) Material Specification:
 85) Material Specification:
 86) Material Specification:
 87) Material Specification:
 88) Material Specification:
 89) Material Specification:
 90) Material Specification:
 91) Material Specification:
 92) Material Specification:
 93) Material Specification:
 94) Material Specification:
 95) Material Specification:
 96) Material Specification:
 97) Material Specification:
 98) Material Specification:
 99) Material Specification:
 100) Material Specification:

INSTRUCTIONS FOR CA-5E12
 CRIMPER, PNEUMATIC

REV ZONE		ECO		REVISIONS		DESCRIPTION	DATE	BY	APPR
AI	-	-	-	RELEASE NUMBER	016571		6/12/09	B.D.B.	M.R.F.

CONTACT LOCATOR
"TURRET"
THREE POSITIONS FOR
SIZE 12, 16 & 20 MALE
AND FEMALE CONTACTS

"TURRET" RELEASE LATCH

6.25 INCH
MAXIMUM
OPEN

2.30 INCH
MAXIMUM
CLOSED

SELECTOR FOR CRIMP
SETTING

1.125 INCH MAX.

9.75 INCH MAXIMUM

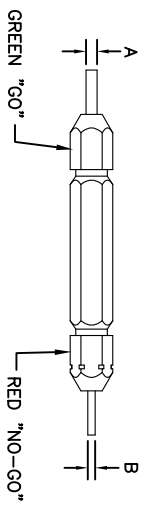
1.00 INCH MAX.

- NOTES:
- THE CA-5D12 IS A HAND OPERATED CRIMPER FOR ELECTRICAL CONTACTS. IT IS ADJUSTABLE TO 3 CONTACT SIZES (12, 16 & 20) AND 8 INDENTER CRIMP POSITIONS FOR DIFFERENT WIRE SIZES (12AWG THRU 26 AWG).
 - WEIGHT: 1.64 LBS
 - SELECTING CONTACT SIZE: PRESS THE RELEASE LATCH ON SIDE OF THE CONTACT LOCATOR "TURRET". ROTATE TO THE DESIRED CONTACT SIZE. THE TOP OF THE "TURRET" IS EMBOSSED WITH THE CONTACT SIZES.
 - SELECTING WIRE SIZE: REMOVE THE LOCKING CLIP. GRASP THE SELECTOR AND ROTATE TO THE DESIRED NUMBER.

GAGE PART NO.	A GO DIA.	B NO-GO DIA.	SELECTOR NUMBER
G125	.0390	.0440	4

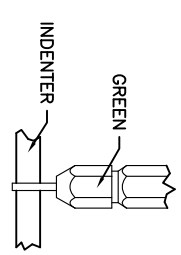
GAGING INSTRUCTIONS

CAUTION!
DO NOT CRIMP GAGE!



"GO" GAGING: OPERATE TOOL TO FULLY CLOSED POSITION. INSERT "GO" GAGE END AS SHOWN. GAGE MUST PASS FREELY BETWEEN INDENTER TIPS.

"NO-GO" GAGING: OPERATE TOOL TO FULLY CLOSED POSITION. INSERT "NO-GO" GAGE END AS SHOWN. THE "NO-GO" MAY PARTIALLY ENTER THE INDENTER OPENING, BUT MUST NOT PASS COMPLETELY THROUGH THE OPENING.



SELECTOR NUMBER	A GO DIA.	B NO-GO DIA.
1	.0280	.0330
2	.0320	.0370
3	.0360	.0410
4	.0390	.0440
5	.0450	.0500
6	.0520	.0570
7	.0590	.0640
8	.0880	.0730

CONTACT SIZE	LOCATOR "TURRET" POSITION	WIRE COLOR	1	2	3	4	5	6	7	8
20-20	RED	1	2	3	4					
16-22	BLUE	4	5	6						
16-20	BLUE	1	2	3	4					
16-16	BLUE	4	5	6						
12-16	YELLOW	4	5	6						
12-12	YELLOW									8

QUANTITY PART NUMBER MATERIALS LIST DESCRIPTION ITEM

UNLESS OTHERWISE SPECIFIED:
 1) All dimensions are in inches.
 2) Pl. DEC 2000
 3) Pl. DEC 2000
 4) Pl. DEC 2000
 5) Pl. DEC 2000
 6) Pl. DEC 2000
 7) Pl. DEC 2000
 8) Pl. DEC 2000
 9) Pl. DEC 2000
 10) Pl. DEC 2000
 11) Pl. DEC 2000
 12) Pl. DEC 2000
 13) Pl. DEC 2000
 14) Pl. DEC 2000
 15) Pl. DEC 2000
 16) Pl. DEC 2000
 17) Pl. DEC 2000
 18) Pl. DEC 2000
 19) Pl. DEC 2000
 20) Pl. DEC 2000
 21) Pl. DEC 2000
 22) Pl. DEC 2000
 23) Pl. DEC 2000
 24) Pl. DEC 2000
 25) Pl. DEC 2000
 26) Pl. DEC 2000
 27) Pl. DEC 2000
 28) Pl. DEC 2000
 29) Pl. DEC 2000
 30) Pl. DEC 2000
 31) Pl. DEC 2000
 32) Pl. DEC 2000
 33) Pl. DEC 2000
 34) Pl. DEC 2000
 35) Pl. DEC 2000
 36) Pl. DEC 2000
 37) Pl. DEC 2000
 38) Pl. DEC 2000
 39) Pl. DEC 2000
 40) Pl. DEC 2000
 41) Pl. DEC 2000
 42) Pl. DEC 2000
 43) Pl. DEC 2000
 44) Pl. DEC 2000
 45) Pl. DEC 2000
 46) Pl. DEC 2000
 47) Pl. DEC 2000
 48) Pl. DEC 2000
 49) Pl. DEC 2000
 50) Pl. DEC 2000
 51) Pl. DEC 2000
 52) Pl. DEC 2000
 53) Pl. DEC 2000
 54) Pl. DEC 2000
 55) Pl. DEC 2000
 56) Pl. DEC 2000
 57) Pl. DEC 2000
 58) Pl. DEC 2000
 59) Pl. DEC 2000
 60) Pl. DEC 2000
 61) Pl. DEC 2000
 62) Pl. DEC 2000
 63) Pl. DEC 2000
 64) Pl. DEC 2000
 65) Pl. DEC 2000
 66) Pl. DEC 2000
 67) Pl. DEC 2000
 68) Pl. DEC 2000
 69) Pl. DEC 2000
 70) Pl. DEC 2000
 71) Pl. DEC 2000
 72) Pl. DEC 2000
 73) Pl. DEC 2000
 74) Pl. DEC 2000
 75) Pl. DEC 2000
 76) Pl. DEC 2000
 77) Pl. DEC 2000
 78) Pl. DEC 2000
 79) Pl. DEC 2000
 80) Pl. DEC 2000
 81) Pl. DEC 2000
 82) Pl. DEC 2000
 83) Pl. DEC 2000
 84) Pl. DEC 2000
 85) Pl. DEC 2000
 86) Pl. DEC 2000
 87) Pl. DEC 2000
 88) Pl. DEC 2000
 89) Pl. DEC 2000
 90) Pl. DEC 2000
 91) Pl. DEC 2000
 92) Pl. DEC 2000
 93) Pl. DEC 2000
 94) Pl. DEC 2000
 95) Pl. DEC 2000
 96) Pl. DEC 2000
 97) Pl. DEC 2000
 98) Pl. DEC 2000
 99) Pl. DEC 2000
 100) Pl. DEC 2000

PROCESS SPECIFICATIONS:
 NONE
 APPROVAL: 6/3/09
 CUSTOMER: BERNUM
 THE USE OF THIS DRAWING IS LIMITED TO THE SPECIFICATIONS AND REQUIREMENTS OF THE ORIGINAL DRAWING. ANY REVISIONS OR MODIFICATIONS ARE SUBJECT TO ORIGINAL DRAWING. REVISED HEREON. ALL DIMENSIONS REFERENCED HEREON ARE IN UNITS OF INCHES UNLESS OTHERWISE SPECIFIED.
 SIZE: 10K44
 SCALE: NONE
 INSTRUCTIONS FOR CA-5D12 CRIMPER, HAND, MACHINED CONTACTS
 S2-15219
 SHEET 1 OF 1

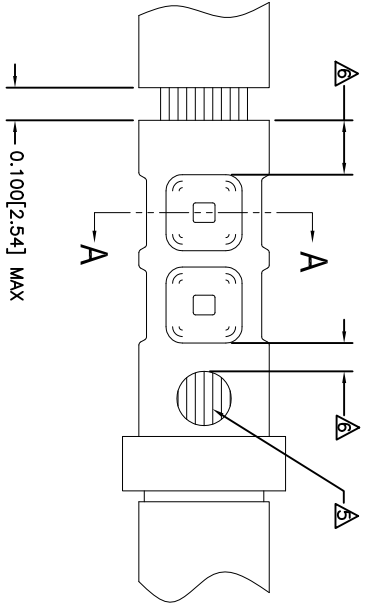
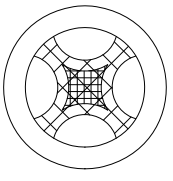
REVOLUTIONS		DESCRIPTION	DATE	BY	APPR
REV	ZONE	ECO	RELEASE NUMBER 016571	B.D.B.	M.R.F.
A1	-	-			

CONTACT P/N	SIZE TYPE	WIRE SIZE	REF. ONLY TENSILE LBS[N]
AT60-202-16XX	16PIN	1.5mm ² 16AWG	35[156]
AT62-201-16XX	16SOC	1.0mm ² 18AWG 0.75mm ² 20AWG	25[111] 20[89]

RECOMMENDED STRIP LENGTH	
CONTACT SIZE	STRIP LENGTH INCH[MM]
16	0.250-0.312[6.35-7.92]

CRIMP TOOLING						
CONTACT SIZE	CRIMP TOOL PART NUMBER	CONTACT LOCATOR "TURRET" POSITION	WIRE SELECTOR NUMBER	GO GAGE INCH[MM]	"NOGO" GAGE INCH[MM]	REMARKS
16	CA-5D12 CA-5E12	BLUE	6	0.052[1.32]	0.057[1.45]	
16	CA-5D12 CA-5E12	BLUE	4	0.039[.991]	0.044[1.12]	SIZE 16 WITH 20 AWG WIRE

- NOTES: UNLESS OTHERWISE SPECIFIED
- 1. MINIMUM +/-0.0005 [0.013] TOLERANCE STEEL GAGE PINS. DO NOT CRIMP GAGE PINS. CLOSE DIE, THEN USE GAGE PINS.
 - 2. WHEN XX=31, CONTACT PLATING IS GOLD.
 - 3. WHEN XX=141, CONTACT PLATING IS NICKEL.
 - 4. PULL RATE OF 1.0 IN [25.4] PER MINUTE. ACTUAL STRENGTH DEPENDS ON WIRE SIZE.
 - 5. FOR CONTACT PERFORMANCE, MATERIAL SPECIFICATIONS AND APPLICATION DETAILS, SEE DRAWING S2-15217.
 - 6. CONDUCTOR STRANDS MUST BE VISIBLE THRU THE INSPECTION HOLE PRIOR TO CRIMP.
 - 7. PROPER CRIMP TOOLING WILL PRODUCE A CRIMP CENTERED BETWEEN THE INSPECTION HOLE AND CRIMP BARREL END.
 - 8. WIRE SIZES PER SAE J1128 AND J1560 [DIN 72551-6] REFERENCE INSTRUCTION MANUALS S2-15219 AND S2-15220 FOR CA-5D12 AND CA-5E12 HAND AND PNEUMATIC CRIMPER.
 - 9. THE CRIMP HEIGHT DIMENSION AFTER CRIMPING MAY VARY FROM THE VALUES LISTED FOR THE "GO-NOGO" PINS.



SECTION A-A
CRIMP CROSS-SECTION

QUANTITY	PART NUMBER	DESCRIPTION	ITEM
UNLESS OTHERWISE SPECIFIED			
1) All dimensions are in inches.			
2) For tolerances see ASME Y14.5-2009.			
3) Pl. SEE 30.011 Provisions 31/14			
4) Pl. SEE 30.011 Provisions 31/14			
5) Fabrication Standards Per:			
a) MIL-STD-20020			
b) MIL-STD-20020			
MATERIAL SPECIFICATIONS:			
MA			
PROCESS SPECIFICATIONS:			
NEXT ASSY:			

QTY	REV	DATE	BY	APPR
4	A1	6/3/09		

MATERIALS LIST		DESCRIPTION		ITEM
DATE	SIGNATURES	DATE	SIGNATURES	ITEM
6/3/09	BERNIM	6/3/09	BERNIM	
6/3/09	ROUC	6/3/09	BERNIM	
6/3/09	BERNIM	6/3/09	BERNIM	
6/3/09	BERNIM	6/3/09	BERNIM	

SINE Systems Corporation	
A Subsidiary of Amphenol Corporation	
44724 Moley Drive	
Clinton Township, MI 48036	
CRIMP INFORMATION	SOLID MACHINED CONTACTS
SIZE [P/N]	S2-15218
SCALE	1:1
REVISION	A1

REVOLUTIONS		DESCRIPTION	DATE	BY	APPR
REV	ZONE	ECO	6/12/08	B.D.B.	M.R.F.
AT	-	-	RELEASE NUMBER 016871		

SOLID CONTACT SIZE	SOLID CONTACT PART NUMBERS		WIRE SIZE AVG (mm ²)	RECOMMENDED STRIP LENGTH INCH (mm)	MIN CONTACT RETENTION LBS (N)	REF CRIMP TENSILE LBS (N)	MAX RATED AMPS @ 125°C CONTINUOUS
	PN	SOCKET					
16	AT60-202-16**	AT62-201-16**	16-20 [1.5-0.5]	0.25-0.31 [6.35-7.92]	25 [1111]	35-20 [156-89]	13

S&P CONTACT SIZE	STAMPED CONTACT PART NUMBERS		WIRE SIZE AVG (mm ²)	WIRE INSULATION O.D. RANGE	RECOMMENDED STRIP LENGTH INCH (mm)	MIN CONTACT RETENTION LBS (N)	REF CRIMP TENSILE LBS (N)	MAX RATED AMPS @ 125°C CONTINUOUS
	PN	SOCKET						
16	AT60-14-01**	AT62-14-01**	14-16 [2.0-1.0]	.100 - .150 [2.54 - 3.81]	0.150-0.200 [3.81-5.08]	25 [1111]	25 [1111]	13
16	AT60-16-01**	AT62-16-01**	16-18 [1.0-0.75]	.075 - .100 [1.90 - 2.54]	0.150-0.200 [3.81-5.08]	25 [1111]	25 [1111]	13
16	AT60-16-06**	AT62-16-06**	18-20 [0.75-0.50]	.055 - .095 [1.40 - 2.41]	0.150-0.200 [3.81-5.08]	25 [1111]	25-15 [111+67]	13

CONTACT RESISTANCE STRENGTH (LESS DROP THROUGH WIRE)			
WIRE AWG	TEST CURRENT	MILLIVOLT DROP SOLID	MILLIVOLT DROP S&P
14	18	60	100
16	13	60	100
18	10	60	100
20	7.5	60	100

MATERIAL SPECIFICATION AND PLATING ** CODES	
PN: COPPER ALLOY	
SOCKET: COPPER ALLOY WITH STAINLESS STEEL SLEEVE	
SOLID MACHINED CONTACT PLATING OPTIONS: Δ	31= GOLD*
	141= NICKEL
STAMPED CONTACT PLATING OPTIONS: Δ	22= NICKEL
	44= GOLD*
	89= SELECTIVE GOLD*
GOLD* = PLATING IS AVAILABLE (RECOMMENDED) FOR ONLY (<5V) CIRCUIT APPLICATIONS	
MATERIALS AND PLATINGS ARE ROHS COMPLIANT	

NOTES: UNLESS OTHERWISE SPECIFIED

1. ALL DIMENSIONS ARE INCHES(MM).
2. ALL FORCES ARE IN LBS(POUNDS) AND "N" (NEWTONS).
3. CONTACT RETENTION TEST PULL RATE SHALL BE 1.0 INCH/2S. 4) PER MINUTE MAXIMUM. WIRE SIZE WILL AFFECT THE TRUE STRENGTH OF THE CRIMP.
4. WIRE SIZES AND INSULATION RANGES ARE FOR REFERENCE ONLY. THE ACTUAL INSULATION RANGE DEPENDS ON CONNECTOR GROMMET SEALING SIZE.

SEE SPECIFICATIONS LISTED BELOW FOR INDIVIDUAL CRIMP INFORMATION:

"SOLID" CONTACTS	SIZE	"STAMPED" CONTACTS	SIZE
	S2-15218	S2-15222	16
		S2-15221	16/20

1. MAXIMUM RATED CURRENT IN CHART DEPENDS ON CONTACT SIZE. ACTUAL RATED CURRENT DEPENDS ON WIRE SIZE.
2. CONTACT FACTORY FOR ALL AVAILABLE PLATING ON SPECIFIC CONTACTS.
3. AMPHENOL SINE PERFORMANCE SPECIFICATIONS REQUIRE THE USE OF AMPHENOL SINE APPROVED TOOLING.

QUANTITY	PART NUMBER	DESCRIPTION	ITEM
MATERIALS LIST			
UNLESS OTHERWISE SPECIFIED			
1) All dimensions are in inches.	SIGNATURES	DATE	
2) Pl. SEE 30.00	DATE	4/5/09	
3) Pl. SEE 30.00	ORDERED BY	6/3/09	
4) Pl. SEE 30.00	ENGINEER	BERNIM	
5) Fabrication Standards Per:	APPROVAL	BERNIM	6/3/09
6) Pl. SEE 30.00	CUSTOMER		
7) Pl. SEE 30.00	APPROVAL		
8) Pl. SEE 30.00			
9) Pl. SEE 30.00			
10) Pl. SEE 30.00			
11) Pl. SEE 30.00			
12) Pl. SEE 30.00			
13) Pl. SEE 30.00			
14) Pl. SEE 30.00			
15) Pl. SEE 30.00			
16) Pl. SEE 30.00			
17) Pl. SEE 30.00			
18) Pl. SEE 30.00			
19) Pl. SEE 30.00			
20) Pl. SEE 30.00			
21) Pl. SEE 30.00			
22) Pl. SEE 30.00			
23) Pl. SEE 30.00			
24) Pl. SEE 30.00			
25) Pl. SEE 30.00			
26) Pl. SEE 30.00			
27) Pl. SEE 30.00			
28) Pl. SEE 30.00			
29) Pl. SEE 30.00			
30) Pl. SEE 30.00			
31) Pl. SEE 30.00			
32) Pl. SEE 30.00			
33) Pl. SEE 30.00			
34) Pl. SEE 30.00			
35) Pl. SEE 30.00			
36) Pl. SEE 30.00			
37) Pl. SEE 30.00			
38) Pl. SEE 30.00			
39) Pl. SEE 30.00			
40) Pl. SEE 30.00			
41) Pl. SEE 30.00			
42) Pl. SEE 30.00			
43) Pl. SEE 30.00			
44) Pl. SEE 30.00			
45) Pl. SEE 30.00			
46) Pl. SEE 30.00			
47) Pl. SEE 30.00			
48) Pl. SEE 30.00			
49) Pl. SEE 30.00			
50) Pl. SEE 30.00			
51) Pl. SEE 30.00			
52) Pl. SEE 30.00			
53) Pl. SEE 30.00			
54) Pl. SEE 30.00			
55) Pl. SEE 30.00			
56) Pl. SEE 30.00			
57) Pl. SEE 30.00			
58) Pl. SEE 30.00			
59) Pl. SEE 30.00			
60) Pl. SEE 30.00			
61) Pl. SEE 30.00			
62) Pl. SEE 30.00			
63) Pl. SEE 30.00			
64) Pl. SEE 30.00			
65) Pl. SEE 30.00			
66) Pl. SEE 30.00			
67) Pl. SEE 30.00			
68) Pl. SEE 30.00			
69) Pl. SEE 30.00			
70) Pl. SEE 30.00			
71) Pl. SEE 30.00			
72) Pl. SEE 30.00			
73) Pl. SEE 30.00			
74) Pl. SEE 30.00			
75) Pl. SEE 30.00			
76) Pl. SEE 30.00			
77) Pl. SEE 30.00			
78) Pl. SEE 30.00			
79) Pl. SEE 30.00			
80) Pl. SEE 30.00			
81) Pl. SEE 30.00			
82) Pl. SEE 30.00			
83) Pl. SEE 30.00			
84) Pl. SEE 30.00			
85) Pl. SEE 30.00			
86) Pl. SEE 30.00			
87) Pl. SEE 30.00			
88) Pl. SEE 30.00			
89) Pl. SEE 30.00			
90) Pl. SEE 30.00			
91) Pl. SEE 30.00			
92) Pl. SEE 30.00			
93) Pl. SEE 30.00			
94) Pl. SEE 30.00			
95) Pl. SEE 30.00			
96) Pl. SEE 30.00			
97) Pl. SEE 30.00			
98) Pl. SEE 30.00			
99) Pl. SEE 30.00			
100) Pl. SEE 30.00			

GENERAL DATA, CONTACTS STAMPED AND FORMED / MACHINED

SIZE: 16/20

SCALE: NONE

REV: A1

DATE: 6/12/08

BY: B.D.B.

APPR: M.R.F.

Компания «Океан Электроники» предлагает заключение долгосрочных отношений при поставках импортных электронных компонентов на взаимовыгодных условиях!

Наши преимущества:

- Поставка оригинальных импортных электронных компонентов напрямую с производств Америки, Европы и Азии, а так же с крупнейших складов мира;
- Широкая линейка поставок активных и пассивных импортных электронных компонентов (более 30 млн. наименований);
- Поставка сложных, дефицитных, либо снятых с производства позиций;
- Оперативные сроки поставки под заказ (от 5 рабочих дней);
- Экспресс доставка в любую точку России;
- Помощь Конструкторского Отдела и консультации квалифицированных инженеров;
- Техническая поддержка проекта, помощь в подборе аналогов, поставка прототипов;
- Поставка электронных компонентов под контролем ВП;
- Система менеджмента качества сертифицирована по Международному стандарту ISO 9001;
- При необходимости вся продукция военного и аэрокосмического назначения проходит испытания и сертификацию в лаборатории (по согласованию с заказчиком);
- Поставка специализированных компонентов военного и аэрокосмического уровня качества (Xilinx, Altera, Analog Devices, Intersil, Interpoint, Microsemi, Actel, Aeroflex, Peregrine, VPT, Syfer, Eurofarad, Texas Instruments, MS Kennedy, Miteq, Cobham, E2V, MA-COM, Hittite, Mini-Circuits, General Dynamics и др.);

Компания «Океан Электроники» является официальным дистрибьютором и эксклюзивным представителем в России одного из крупнейших производителей разъемов военного и аэрокосмического назначения «JONHON», а так же официальным дистрибьютором и эксклюзивным представителем в России производителя высокотехнологичных и надежных решений для передачи СВЧ сигналов «FORSTAR».



JONHON

«JONHON» (основан в 1970 г.)

Разъемы специального, военного и аэрокосмического назначения:

(Применяются в военной, авиационной, аэрокосмической, морской, железнодорожной, горно- и нефтедобывающей отраслях промышленности)

«FORSTAR» (основан в 1998 г.)

ВЧ соединители, коаксиальные кабели, кабельные сборки и микроволновые компоненты:

(Применяются в телекоммуникациях гражданского и специального назначения, в средствах связи, РЛС, а так же военной, авиационной и аэрокосмической отраслях промышленности).



Телефон: 8 (812) 309-75-97 (многоканальный)

Факс: 8 (812) 320-03-32

Электронная почта: ocean@oceanchips.ru

Web: <http://oceanchips.ru/>

Адрес: 198099, г. Санкт-Петербург, ул. Калинина, д. 2, корп. 4, лит. А