

## STAMPED AND FORMED CONTACTS, PG 1 of 2

Click on [blue underlined part numbers](#) to be taken to their spec sheets.

### OPTIONS

**PART NUMBER:** [AT62-14-01XX](#)  
**DESCRIPTION:** CONTACT, SOCKET, STAMPED, SIZE 16

**MATERIAL:**  
 CONTACT BODY: COPPER ALLOY  
 HOOD: STAINLESS STEEL  
**PLATING SUFFIX CODE:**  
 XX=22 NICKEL PLATING  
 XX=44 GOLD PLATING  
**CONTACT GENERAL DATA SPECIFICATION:** S2-15217  
**AVAILABLE CRIMPERS:** ATT-16-00, MFX-3950 & MFX-3953  
**CRIMPER SPECIFICATIONS:** S2-15223 & S2-15224  
**CRIMP INFORMATION DRAWING:** S2-15221 & S2-15222  
**CONTACTS PER REEL:** APPROX. 4000 (PARTIAL REELS AVAILABLE)



**PART NUMBER:** [AT62-16-01XX](#)  
**DESCRIPTION:** CONTACT, SOCKET, STAMPED, SIZE 16

**MATERIAL:**  
 CONTACT BODY: COPPER ALLOY  
 HOOD: STAINLESS STEEL  
**PLATING SUFFIX CODE:**  
 XX=22 NICKEL PLATING  
 XX=44 GOLD PLATING  
**CONTACT GENERAL DATA SPECIFICATION:** S2-15217  
**AVAILABLE CRIMPERS:** ATT-16-00, ATT-16-01, MFX-3950 & MFX-3953  
**CRIMPER SPECIFICATIONS:** S2-15223 & S2-15224  
**CRIMP INFORMATION DRAWING:** S2-15221 & S2-15222  
**CONTACTS PER REEL:** APPROX. 4000 (PARTIAL REELS AVAILABLE)



**PART NUMBER:** [AT62-16-06XX](#)  
**DESCRIPTION:** CONTACT, SOCKET, STAMPED, SIZE 16

**MATERIAL:**  
 CONTACT BODY: COPPER ALLOY  
 HOOD: STAINLESS STEEL  
**PLATING SUFFIX CODE:**  
 XX=22 NICKEL PLATING  
 XX=44 GOLD PLATING  
**CONTACT GENERAL DATA SPECIFICATION:** S2-15217  
**AVAILABLE CRIMPERS:** ATT-16-01, MFX-3950 & MFX-3953  
**CRIMPER SPECIFICATIONS:** S2-15223 & S2-15224  
**CRIMP INFORMATION DRAWING:** S2-15221 & S2-15222  
**CONTACTS PER REEL:** APPROX. 4000 (PARTIAL REELS AVAILABLE)



**PART NUMBER:** [AT60-14-01XX](#)  
**DESCRIPTION:** CONTACT, PIN, STAMPED, SIZE 16

**MATERIAL:** COPPER ALLOY  
**PLATING SUFFIX CODE:**  
 XX=22 NICKEL PLATING  
 XX=44 GOLD PLATING  
**CONTACT GENERAL DATA SPECIFICATION:** S2-15217  
**AVAILABLE CRIMPERS:** ATT-16-00, MFX-3950 & MFX-3953  
**CRIMPER SPECIFICATIONS:** S2-15223 & S2-15224  
**CRIMP INFORMATION DRAWING:** S2-15221 & S2-15222  
**CONTACTS PER REEL:** APPROX. 4000 (PARTIAL REELS AVAILABLE)

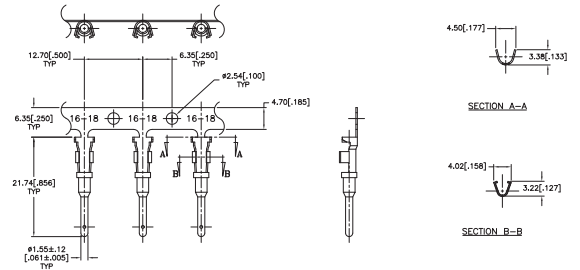


## STAMPED AND FORMED CONTACTS, PG 2 of 2

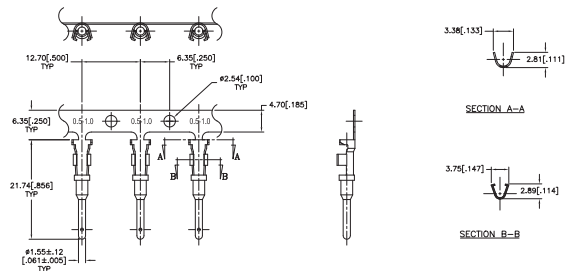
Click on [blue underlined part numbers](#) to be taken to their spec sheets.

### OPTIONS

**PART NUMBER:** [AT60-16-01XX](#)  
**DESCRIPTION:** CONTACT, PIN, STAMPED, SIZE 16  
**MATERIAL:** COPPER ALLOY  
**PLATING SUFFIX CODE:**  
 XX=22 NICKEL PLATING  
 XX=44 GOLD PLATING  
**CONTACT GENERAL DATA SPECIFICATION:** S2-15217  
**AVAILABLE CRIMPERS:** ATT-16-00, ATT-16-01, MFX-3950 & MFX-3953  
**CRIMPER SPECIFICATIONS:** S2-15223 & S2-15224  
**CRIMP INFORMATION DRAWING:** S2-15221 & S2-15222  
**CONTACTS PER REEL:** APPROX. 4000 (PARTIAL REELS AVAILABLE)



**PART NUMBER:** [AT60-16-06XX](#)  
**DESCRIPTION:** CONTACT, PIN, STAMPED, SIZE 16  
**MATERIAL:** COPPER ALLOY  
**PLATING SUFFIX CODE:**  
 XX=22 NICKEL PLATING  
 XX=44 GOLD PLATING  
**CONTACT GENERAL DATA SPECIFICATION:** S2-15217  
**AVAILABLE CRIMPERS:** ATT-16-01, MFX-3950 & MFX-3953  
**CRIMPER SPECIFICATIONS:** S2-15223 & S2-15224  
**CRIMP INFORMATION DRAWING:** S2-15221 & S2-15222  
**CONTACTS PER REEL:** APPROX. 4000 (PARTIAL REELS AVAILABLE)



## SOLID/MACHINED CONTACTS

Click on [blue underlined part numbers](#) to be taken to their spec sheets.

### OPTIONS

MILITARY-STYLE

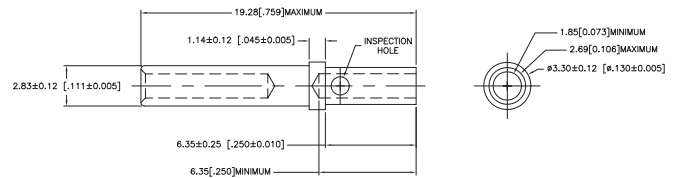
**PART NUMBER:** [AT60-202-16XX](#)  
**DESCRIPTION:** CONTACT, PIN, SOLID MACHINED, SIZE 16  
**MATERIAL:** COPPER ALLOY  
**PLATING SUFFIX CODE:**  
 XX=141 NICKEL PLATING  
 XX=31 GOLD PLATING  
**CONTACT GENERAL DATA SPECIFICATION:** S2-15217  
**AVAILABLE CRIMPERS:** CA-5D12 & CA-5E12  
**CRIMPER SPECIFICATIONS:** S2-15219 & S2-15220  
**CRIMP INFORMATION DRAWING:** S2-15218



**PART NUMBER:** [AT62-201-16XX](#)  
**DESCRIPTION:** CONTACT, SOCKET, SOLID MACHINED, SIZE 16  
**MATERIAL:**  
 CONTACT BODY: COPPER ALLOY  
 HOOD: STAINLESS STEEL  
**PLATING SUFFIX CODE:**  
 XX=141 NICKEL PLATING  
 XX=31 GOLD PLATING  
**CONTACT GENERAL DATA SPECIFICATION:** S2-15217  
**AVAILABLE CRIMPERS:** CA-5D12 & CA-5E12  
**CRIMPER SPECIFICATIONS:** S2-15219 & S2-15220  
**CRIMP INFORMATION DRAWING:** S2-15218



**PART NUMBER:** [65-54942-14](#)  
**DESCRIPTION:** CONTACT, SOCKET, ROCKSOLID, SIZE 16  
**AWG RANGE:** 14AWG  
**MATERIAL:** COPPER ALLOY  
**PLATING:** GOLD  
**CONTACT GENERAL DATA SPECIFICATION:** S2-15217  
**AVAILABLE CRIMPERS:** CA-5D12 & CA-5E12  
**CRIMPER SPECIFICATIONS:** S2-15219 & S2-15220  
**CRIMP INFORMATION DRAWING:** S2-15218

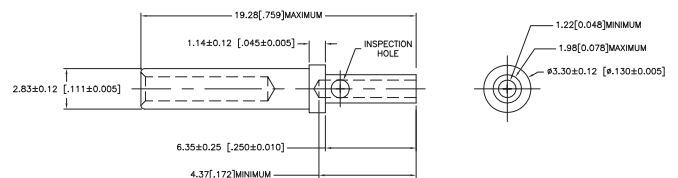


ROCKSOLID™ CONTACTS

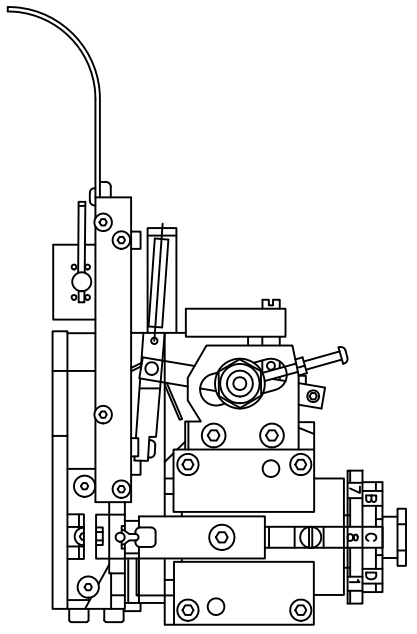
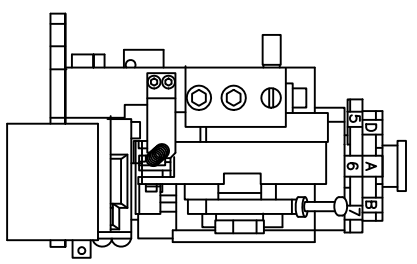
**PART NUMBER:** [65-54942-16](#)  
**DESCRIPTION:** CONTACT, SOCKET, ROCKSOLID, SIZE 16  
**AWG RANGE:** 16AWG  
**MATERIAL:** COPPER ALLOY  
**PLATING:** GOLD  
**CONTACT GENERAL DATA SPECIFICATION:** S2-15217  
**AVAILABLE CRIMPERS:** CA-5D12 & CA-5E12  
**CRIMPER SPECIFICATIONS:** S2-15219 & S2-15220  
**CRIMP INFORMATION DRAWING:** S2-15218



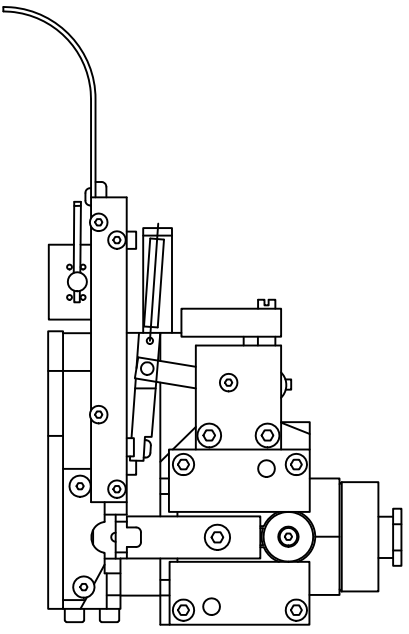
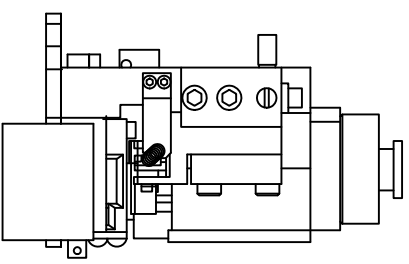
**PART NUMBER:** [65-54942-20](#)  
**DESCRIPTION:** CONTACT, SOCKET, ROCKSOLID, SIZE 16  
**AWG RANGE:** 20AWG  
**MATERIAL:** COPPER ALLOY  
**PLATING:** GOLD  
**CONTACT GENERAL DATA SPECIFICATION:** S2-15217  
**AVAILABLE CRIMPERS:** CA-5D12 & CA-5E12  
**CRIMPER SPECIFICATIONS:** S2-15219 & S2-15220  
**CRIMP INFORMATION DRAWING:** S2-15218



REVOLUTIONS		DESCRIPTION	DATE	BY	APPR
REV	ZONE	ECO	RELEASE NUMBER	B.D.B.	M.R.F.
A1	-	-	016571	6/12/08	



SINE PART NUMBER	MFX-3950
DEUTSCH PART NUMBER	DCT16-02-00
TYCO PART NUMBER	1-3-1385344-1, 2, 3, 4, 5 & 7



SINE PART NUMBER	MFX-3953
DEUTSCH PART NUMBER	DCT1620-02-00

ALL REFERENCES TO DEUTSCH PRODUCTS OR SPECIFICATIONS ARE FOR COMPARISON PURPOSES ONLY, AND REFER TO DEUTSCH INDUSTRIAL PRODUCTS.  
 ALL REFERENCES TO TYCO PRODUCTS OR SPECIFICATIONS ARE FOR COMPARISON PURPOSES ONLY, AND REFER TO TYCO ELECTRONICS.

QUANTITY	PART NUMBER	DESCRIPTION	ITEM
MATERIALS LIST			
UNLESS OTHERWISE SPECIFIED			
1) All dimensions are in inches.			
2) Pl. DEC 30.00			
3) Pl. DEC 30.00			
4) Pl. DEC 30.00			
5) Production Standard Per:			
a) MIL-STD-20020			
b) MIL-STD-20020			
c) MIL-STD-20020			
d) MIL-STD-20020			
e) MIL-STD-20020			
f) MIL-STD-20020			
g) MIL-STD-20020			
h) MIL-STD-20020			
i) MIL-STD-20020			
j) MIL-STD-20020			
k) MIL-STD-20020			
l) MIL-STD-20020			
m) MIL-STD-20020			
n) MIL-STD-20020			
o) MIL-STD-20020			
p) MIL-STD-20020			
q) MIL-STD-20020			
r) MIL-STD-20020			
s) MIL-STD-20020			
t) MIL-STD-20020			
u) MIL-STD-20020			
v) MIL-STD-20020			
w) MIL-STD-20020			
x) MIL-STD-20020			
y) MIL-STD-20020			
z) MIL-STD-20020			
A1			

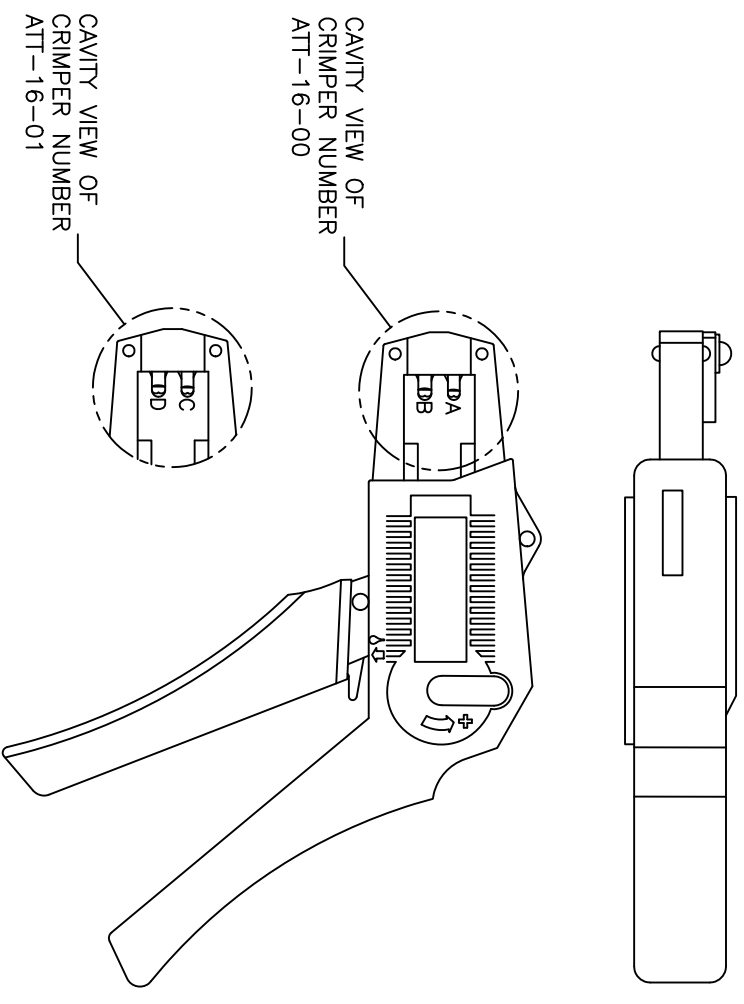
REVISIONS					
REV	ECO	DESCRIPTION	DATE	BY	APPR
A1	-	RELEASE NUMBER 016571	6/12/09	B.D.B.	M.R.F.

USE CRIMPER NUMBER:  
ATT-16-00 WITH CAVITY A & B

CONTACT P/N:	INSULATION $\phi$	CAVITY	WIRE SIZE
AT60-16-01**	.075 - .140	B	1.5mm <sup>2</sup>
AT62-16-01**	[1.91 - 3.56]	A	16AWG
		A	1.0mm <sup>2</sup>
AT60-14-01**	.095 - .150	B	14AWG
AT62-14-01**	[2.41 - 3.81]	B	2.0mm <sup>2</sup>
		B	1.5mm <sup>2</sup>
		A	1.5mm <sup>2</sup>
		A	16AWG
		A	1.0mm <sup>2</sup>
AT60-16-06**	.055 - .100	A	16AWG
AT62-16-06**	[1.40 - 2.54]	A	1.0mm <sup>2</sup>

USE CRIMPER NUMBER:  
ATT-16-01 WITH CAVITY C & D

CONTACT P/N:	INSULATION $\phi$	CAVITY	WIRE SIZE
AT60-16-01**	.075 - .140	D	18AWG
AT62-16-01**	[1.91 - 3.56]	D	.75mm <sup>2</sup>
AT60-16-06**	.055 - .100	D	18AWG
AT62-16-06**	[1.40 - 2.54]	D	.75mm <sup>2</sup>
		C	.50mm <sup>2</sup>



ALL REFERENCES TO DEUTSCH PRODUCTS OR SPECIFICATIONS ARE FOR COMPARISON PURPOSES ONLY, AND REFER TO DEUTSCH INDUSTRIAL PRODUCTS.

- NOTES (UNLESS OTHERWISE SPECIFIED):
- ALL DIMENSIONS IN INCHES [MILLIMETERS]
  - FOR PLATING CODES \*\* SEE CONTACT DATA DRAWINGS.
  - THIS TOOL IS FOR CRIMPING SIZE 16 CONTACTS ONLY TO WIRES LISTED IN THE CHARTS.
  - DEUTSCH IPD CROSS REFERENCE PART NUMBERS ARE DTT-16-00 AND DTT-16-01.

QUANTITY	PART NUMBER	DESCRIPTION	ITER#
MATERIALS LIST			
<p><b>SINE</b> Systems Corporation            A Subsidiary of Amphenol Corporation            44724 Morley Drive            Clinton Township, MI 48036</p>			
<p>UNLESS OTHERWISE SPECIFIED            1) All dimensions are in inches.            2) Tolerances are as follows:            3) Pl. DEC 3000            4) Hole Reference = A</p>		<p>SIGNATURES DATE            DRAWN: BERNUW 6/8/09            CHECKED: FORCE 6/8/09            ENGINEER: BERNUW            APPROVAL: BERNUW 6/8/09</p>	
<p>PROCESS SPECIFICATIONS            N/A</p>		<p>THE USE OF THIS DOCUMENT IS UNLIMITED DESIGN FEATURES, SPECIAL DATA, SECTION ARE THE PROPERTY OF AMPHENOL CORP. ALL RIGHTS RESERVED. NO PARTS OR DOCUMENTS REFERENCED HEREON MAY BE REPRODUCED OR TRANSMITTED IN ANY FORM OR BY ANY MEANS WITHOUT THE WRITTEN PERMISSION OF AMPHENOL CORPORATION.</p>	
SIZE	FCSD NO/DWG NO	SCALE	REVISION
B	16K44	S2-15223	A1
S2-15223		SHEET	1 OF 1

REVISIONS						
REV	ZONE	ECO	DESCRIPTION	DATE	BY	APP
A1	-	-	RELEASE NUMBER 016871	6/12/09	B.D.B.	M.F.F.

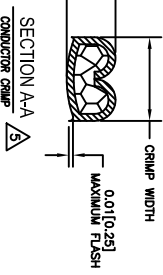
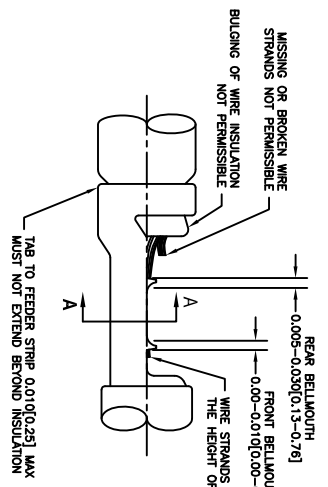
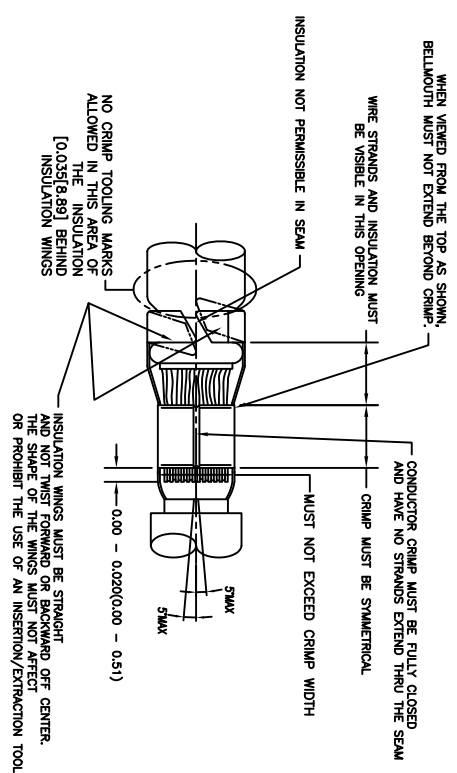
STAMPED CONTACT PART NUMBER 1068-PIN 1068=SOCKET	SIZE	CONDUCTOR WIRE SIZE	CRIMP HEIGHT	CRIMP WIDTH	CONDUCTOR PUNCH NUMBER	CONDUCTOR ANVIL NUMBER	CRIMP TENSILE REFERENCE
A780-14-011x A782-14-011x INSULATION RANGE 0.095-0.150(2.41-3.81)	16	14 AWG 2.00mm <sup>2</sup> 1.50mm <sup>2</sup> 16 AWG 1.00mm <sup>2</sup> 18 AWG 0.75mm <sup>2</sup>	0.055(1.40) 0.055(1.40) 0.055(1.39) 0.050(1.27) 0.049(1.24) 0.048(1.22)	±0.003 INCH [±0.08 mm]	ATT17-002-0200	ATT17-101-0200	28(111)
A780-16-011x A782-16-011x INSULATION RANGE 0.075-0.140(1.91-3.56)	16	16 AWG 1.00mm <sup>2</sup> 18 AWG 0.75mm <sup>2</sup>	0.050(1.27) 0.051(1.30) 0.050(1.27) 0.049(1.24)	±0.003 INCH [±0.08 mm]	ATT17-002-0200	ATT17-101-0200	28(111)
A780-16-066x A782-16-066x INSULATION RANGE 0.055-0.100(1.40-2.54)	16	16 AWG 1.00mm <sup>2</sup> 18 AWG 0.75mm <sup>2</sup> 20 AWG 0.50mm <sup>2</sup>	0.050(1.27) 0.051(1.27) 0.049(1.24) 0.048(1.22) 0.045(1.14)	±0.003 INCH [±0.08 mm]	ATT17-003-0200	ATT17-103-0200	28(111) 15(67)

**CROSS REFERENCE**

SINE PART NUMBER	DEUTSCH PART NUMBER
MFX-3950	DC116-02-00
ATT17-002-0200	1017-002-0200
ATT17-003-0200	1017-003-0200
ATT17-101-0200	1017-101-0200
ATT17-103-0200	1017-103-0200
ATT17-210-0200	1017-210-0200
ATT17-211-0200	1017-211-0200
ATT17-213-0200	1017-213-0200
ATT17-214-0200	1017-214-0200
ATT17-217-0200	1017-217-0200
ATT17-218-0200	1017-218-0200
ATT17-310-0200	1017-310-0200
ATT17-311-0200	1017-311-0200
ATT17-313-0200	1017-313-0200
ATT17-304-0200	1017-304-0200
ATT17-317-0200	1017-317-0200
ATT17-318-0200	1017-318-0200

**NOTES: UNLESS OTHERWISE SPECIFIED**

1. ALL DIMENSIONS ARE IN INCHES(mm).
2. FORCES ARE IN POUNDS(LBS) AND NEWTONS(N).
3. "X"= PLATING SUFFIX. SEE INDIVIDUAL CONTACT DRAWING.
4. WIRE STRIP LENGTH: 0.175±0.029(4.45±0.74). BROKEN OR MISSING CONDUCTOR STRANDS ARE NOT ACCEPTABLE.
5. USE A BLADE MICROMETER (0.100(2.54) MIN SPACING AND 0.060(0.010)(1.50(0.040) ANVIL) TO MEASURE THE CONDUCTOR CRIMP. SEE SECTION AA.
6. CRIMP TENSILE STRENGTH IS DETERMINED AT A PULL RATE SPEED OF 1.00 INCH(25.4) PER MINUTE. INSULATION WINGS ARE REMOVED FOR TEST. ACTUAL CRIMP TENSILE STRENGTH DEPENDS ON WIRE/CONDUCTOR SIZE. VALUES ON THIS SPECIFICATION ARE FOR REFERENCE ONLY.
7. INSULATION DIAMETER RANGE IS DETERMINED BY CONNECTOR AND ITS WIRE SEAL SIZE. SEE CONNECTOR DRAWING FOR INSULATION RANGE.
8. INSULATION CRIMP DIAMETER SHOULD BE THE EQUAL OR LESS THAN THE DIAMETER OF THE WIRE INSULATION (HARD OR TEFION INSULATION MAY BE AN EXCEPTION). INSULATION CRIMP SHALL NOT AFFECT REMOVAL TOOL PERFORMANCE AND SHALL NOT DAMAGE CONNECTOR GROMMET SEAL.
9. CONDUCTOR TYPE ARE PER SAE J1128(AWG) AND ISO 6722(METRIC)
10. FOR CONTACT MATERIAL AND PERFORMANCE DATA, SEE DRAWING S2-15217.
11. REFER TO S2-15223 AND S2-15224 AND CROSS REFERENCE CHARTS FOR CRIMP TOOL DATA.



ALL REFERENCES TO DEUTSCH PRODUCTS OR SPECIFICATIONS ARE FOR COMPARISON PURPOSES ONLY, AND REFER TO DEUTSCH INDUSTRIAL PRODUCTS.

QUANTITY	PART NUMBER	MATERIALS LIST	DESCRIPTION	ITEM
UNLESS OTHERWISE SPECIFIED	SIGNATURES	DATE		
1) All dimensions are in inches.	DRAWN: POTER	4/7/09		
2) For use with SAE J1128 and ISO 6722.	CHECKED: RONE	6/8/09		
3) For use with SAE J1128 and ISO 6722.	ENGINEER: BERNIM	6/8/09		
4) Mark S2-20020	APPROVAL: BERNIM	6/8/09		
5) Reduction Standard Per: ASME Y14.5	CUSTOMER:			
6) Mark S2-20020				
7) Mark S2-20020				
8) Mark S2-20020				
9) Mark S2-20020				
10) Mark S2-20020				
11) Mark S2-20020				
12) Mark S2-20020				
13) Mark S2-20020				
14) Mark S2-20020				
15) Mark S2-20020				
16) Mark S2-20020				
17) Mark S2-20020				
18) Mark S2-20020				
19) Mark S2-20020				
20) Mark S2-20020				
21) Mark S2-20020				
22) Mark S2-20020				
23) Mark S2-20020				
24) Mark S2-20020				
25) Mark S2-20020				
26) Mark S2-20020				
27) Mark S2-20020				
28) Mark S2-20020				
29) Mark S2-20020				
30) Mark S2-20020				
31) Mark S2-20020				
32) Mark S2-20020				
33) Mark S2-20020				
34) Mark S2-20020				
35) Mark S2-20020				
36) Mark S2-20020				
37) Mark S2-20020				
38) Mark S2-20020				
39) Mark S2-20020				
40) Mark S2-20020				
41) Mark S2-20020				
42) Mark S2-20020				
43) Mark S2-20020				
44) Mark S2-20020				
45) Mark S2-20020				
46) Mark S2-20020				
47) Mark S2-20020				
48) Mark S2-20020				
49) Mark S2-20020				
50) Mark S2-20020				
51) Mark S2-20020				
52) Mark S2-20020				
53) Mark S2-20020				
54) Mark S2-20020				
55) Mark S2-20020				
56) Mark S2-20020				
57) Mark S2-20020				
58) Mark S2-20020				
59) Mark S2-20020				
60) Mark S2-20020				
61) Mark S2-20020				
62) Mark S2-20020				
63) Mark S2-20020				
64) Mark S2-20020				
65) Mark S2-20020				
66) Mark S2-20020				
67) Mark S2-20020				
68) Mark S2-20020				
69) Mark S2-20020				
70) Mark S2-20020				
71) Mark S2-20020				
72) Mark S2-20020				
73) Mark S2-20020				
74) Mark S2-20020				
75) Mark S2-20020				
76) Mark S2-20020				
77) Mark S2-20020				
78) Mark S2-20020				
79) Mark S2-20020				
80) Mark S2-20020				
81) Mark S2-20020				
82) Mark S2-20020				
83) Mark S2-20020				
84) Mark S2-20020				
85) Mark S2-20020				
86) Mark S2-20020				
87) Mark S2-20020				
88) Mark S2-20020				
89) Mark S2-20020				
90) Mark S2-20020				
91) Mark S2-20020				
92) Mark S2-20020				
93) Mark S2-20020				
94) Mark S2-20020				
95) Mark S2-20020				
96) Mark S2-20020				
97) Mark S2-20020				
98) Mark S2-20020				
99) Mark S2-20020				
100) Mark S2-20020				

SIZE	SCALE	SCALE	SCALE	SCALE
10K44	S2-15222	S2-15222	S2-15222	S2-15222

REV	BY	DATE	APP
A1	B.D.B.	6/12/09	M.F.F.

REVOLUTIONS		DESCRIPTION	DATE	BY	APP
REV	ZONE	ECO	RELEASE NUMBER 016971	B.O.B.	M.F.F.
A1	-	-	6/12/09		

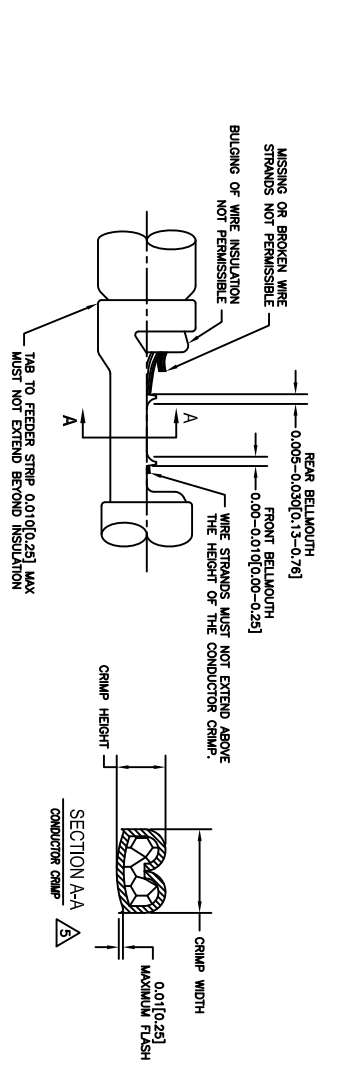
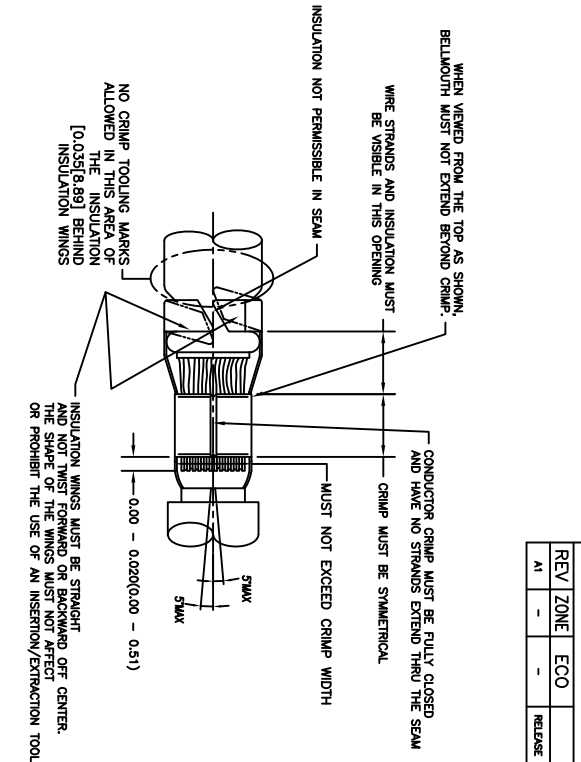
STAMPED CONTACT PART NUMBER (1009=PIN 1009=SOCKET)	SIZE	CONDUCTOR WIRE SIZE	CRIMP HEIGHT		CRIMP WIDTH		CONDUCTOR PUNCH NUMBER	CONDUCTOR ANVIL NUMBER	CRIMP TENSILE REFERENCE (LBS/IN)
			+0.001/-0.002 INCH (-0.025/-0.05 mm)	±0.003 INCH (±0.08 mm)	±0.003 INCH (±0.08 mm)	±0.003 INCH (±0.08 mm)			
A160-14-01xx		14 AWG	0.0591(4.0)	0.094(2.39)					
A162-14-01xx		2.00mm <sup>2</sup>	0.0591(4.0)	0.094(2.39)					
A162-14-01xx		1.50mm <sup>2</sup>	0.0591(4.0)	0.094(2.39)					
INSULATION RANGE 0.095-0.150(2.41-3.81)	16	16 AWG	0.0501(2.27)	0.094(2.39)			A117-4083-0200	A117-183-0200	291(11)
		1.00mm <sup>2</sup>	0.0501(2.27)	0.094(2.39)					
		18 AWG	0.0491(2.24)	0.094(2.39)					
		0.75mm <sup>2</sup>	0.0491(2.24)	0.094(2.39)					
		14 AWG	0.0591(4.0)	0.094(2.39)					
		2.00mm <sup>2</sup>	0.0591(4.0)	0.094(2.39)					
		1.50mm <sup>2</sup>	0.0591(4.0)	0.094(2.39)					
A162-16-01xx		16 AWG	0.0501(2.27)	0.094(2.39)			A117-4083-0200	A117-183-0200	291(11)
INSULATION RANGE 0.075-0.140(1.91-3.59)	16	16 AWG	0.0501(2.27)	0.094(2.39)					
		1.00mm <sup>2</sup>	0.0501(2.27)	0.094(2.39)					
		18 AWG	0.0491(2.24)	0.094(2.39)					
		0.75mm <sup>2</sup>	0.0491(2.24)	0.094(2.39)					
A160-16-06xx		16 AWG	0.0501(2.27)	0.094(2.39)					
A162-16-06xx		1.00mm <sup>2</sup>	0.0501(2.27)	0.094(2.39)					
INSULATION RANGE 0.055-0.100(1.40-2.54)	16	18 AWG	0.0491(2.24)	0.079(2.01)			A117-4082-0200	A117-182-0200	291(11)
		0.75mm <sup>2</sup>	0.0491(2.24)	0.079(2.01)					
		20 AWG	0.0481(2.22)	0.079(2.01)					
		0.50mm <sup>2</sup>	0.0481(2.22)	0.079(2.01)					19(67)

CROSS REFERENCE

INSULATION DIAMETER RANGE	INSULATION PUNCH NUMBER	INSULATION ANVIL NUMBER	SINE PART NUMBER	DEUTSCH PART NUMBER
0.120-0.150	[3.05-3.81]	A117-229-0200	MPX-3953	DCH1620-02-00
0.105-0.125	[2.67-3.18]	A117-229-0200	A117-083-0200	1017-083-0200
0.085-0.111	[2.16-2.82]	A117-229-0200	A117-082-0200	1017-082-0200
0.075-0.105	[1.91-2.67]	A117-229-0200	A117-183-0200	1017-183-0200
0.063-0.094	[1.62-2.39]	A117-229-0200	A117-182-0200	1017-182-0200
0.050-0.075	[1.27-1.91]	A117-230-0200	A117-225-0200	1017-225-0200
		A117-230-0200	A117-226-0200	1017-226-0200
		A117-230-0200	A117-227-0200	1017-227-0200
		A117-230-0200	A117-228-0200	1017-228-0200
		A117-230-0200	A117-229-0200	1017-229-0200
		A117-230-0200	A117-325-0200	1017-325-0200
		A117-230-0200	A117-326-0200	1017-326-0200
		A117-230-0200	A117-327-0200	1017-327-0200
		A117-230-0200	A117-328-0200	1017-328-0200
		A117-230-0200	A117-329-0200	1017-329-0200
		A117-230-0200	A117-330-0200	1017-330-0200

NOTES: UNLESS OTHERWISE SPECIFIED

- ALL DIMENSIONS ARE IN INCHES(mm).
- FORCES ARE IN POUNDS(LBS) AND NEWTONS(N).
- "X"= PLATING SUFFIX. SEE INDIVIDUAL CONTACT DRAWING.
- WIRE STRIP LENGTH: 0.175±0.0294, 45±0.64. BROKEN OR MISSING CONDUCTOR STRANDS ARE NOT ACCEPTABLE.
- USE A BLADE MICROMETER (0.100[2.54] MIN SPINDLE AND 0.060[0.0101, 500[0.040] ANVIL) TO MEASURE THE CONDUCTOR CRIMP. SEE SECTION AA.
- CRIMP TENSILE STRENGTH IS DETERMINED AT A PULL RATE SPEED OF 1.00 INCH(25.4) PER MINUTE. INSULATION WINGS ARE REMOVED FOR TEST. ACTUAL CRIMP TENSILE STRENGTH DEPENDS ON WIRE/CONDUCTOR SIZE. VALUES ON THIS SPECIFICATION ARE FOR REFERENCE ONLY.
- INSULATION DIAMETER RANGE IS DETERMINED BY CONNECTOR AND ITS WIRE SEAL SIZE. SEE CONNECTOR DRAWING FOR INSULATION RANGE.
- INSULATION CRIMP DIAMETER SHOULD BE THE EQUAL OR LESS THAN THE DIAMETER OF THE WIRE INSULATION (HARD OR TEFION INSULATION MAY BE AN EXCEPTION). INSULATION CRIMP SHALL NOT AFFECT REMOVAL TOOL PERFORMANCE AND SHALL NOT DAMAGE CONNECTOR GROMMET SEAL.
- CONDUCTOR TYPE ARE PER SAE J1128(AWG) AND ISO 6122(METRIC)
- FOR CONTACT MATERIAL AND PERFORMANCE DATA, SEE DRAWING S2-15217.
- REFER TO S2-15223 AND S2-15224 AND CROSS REFERENCE CHARTS FOR CRIMP TOOL DATA.

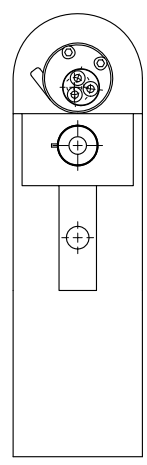


ALL REFERENCES TO DEUTSCH PRODUCTS OR SPECIFICATIONS ARE FOR COMPARISON PURPOSES ONLY, AND REFER TO DEUTSCH INDUSTRIAL PRODUCTS.

QUANTITY	PART NUMBER	MATERIALS LIST	DESCRIPTION	ITEM
UNLESS OTHERWISE SPECIFIED				
1	MPX-3953	ROTOR	SINE Systems Corporation	
1	MPX-3953	ROTOR	A Subsidiary of Amphenol Corporation	
1	MPX-3953	ROTOR	44724 Moley Drive	
1	MPX-3953	ROTOR	Clinton Township, MI 48036	
1	MPX-3953	ROTOR	CRIMP DATA, STAMPED CONTACTS FOR CRIMPER MPX-3953	
1	MPX-3953	ROTOR	CRIMP DATA, STAMPED CONTACTS FOR CRIMPER MPX-3953	
1	MPX-3953	ROTOR	CRIMP DATA, STAMPED CONTACTS FOR CRIMPER MPX-3953	

REVOLUTIONS		DESCRIPTION	DATE	BY	APPR
REV	ZONE	ECO	RELEASE NUMBER 016571	B.D.B.	M.R.F.
1	-	-	6/12/09		

CONTACT LOCATOR "TURRET"  
THREE POSITION FOR SIZE  
12, 16 & 20 MALE AND  
FEMALE CONTACTS

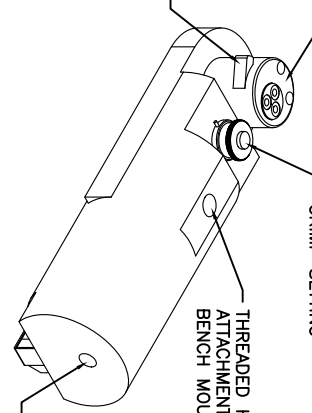


"TURRET"  
RELEASE LATCH

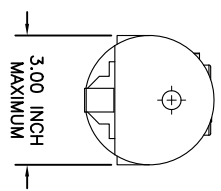
SELECTOR FOR  
CRIMP SETTING

THREADED HOLE FOR  
ATTACHMENT OF  
BENCH MOUNT FIXTURE

THREADED OPENING  
FOR COMPRESSED  
AIR FITTING

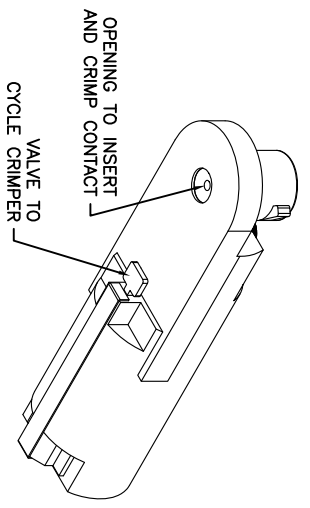


10.00 INCH  
MAXIMUM



3.00 INCH  
MAXIMUM

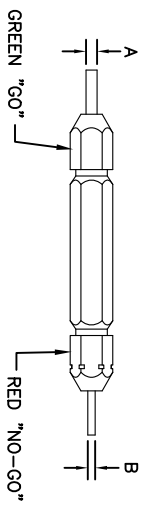
- NOTES:
1. THE CA-5E12 IS A COMPRESSED AIR OPERATED HAND CRIMPER FOR ELECTRICAL CONTACTS. IT IS ADJUSTABLE TO 3 CONTACT SIZES (12, 16 & 20) AND 8 INDENTER CRIMP POSITIONS FOR DIFFERENT WIRE SIZES (12AWG THRU 26 AWG).
  2. 80-120 PSI COMPRESSED AIR.
  3. WEIGHT: 3.1 LBS
  4. SELECTING CONTACT SIZE: PRESS THE RELEASE LATCH ON SIDE OF THE CONTACT LOCATOR "TURRET". ROTATE TO THE DESIRED CONTACT SIZE. THE TOP OF THE "TURRET" IS EMBOSSED WITH THE CONTACT SIZES.
  5. SELECTING WIRE SIZE: GRASP THE SELECTOR AND ROTATE TO THE DESIRED NUMBER.



VALVE TO  
CYCLE CRIMP

OPENING TO INSERT  
AND CRIMP CONTACT

GAGE PART NO.	A GO DIA.	B NO-GO DIA.	SELECTOR NUMBER
G125	.0390	.0440	4



A

GREEN "GO"

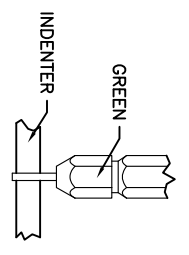
RED "NO-GO"

GAGING INSTRUCTIONS

CAUTION!  
DO NOT CRIMP GAGE!

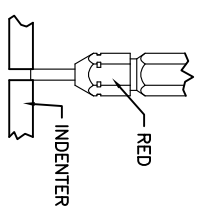
"GO" GAGING: OPERATE TOOL TO FULLY CLOSED POSITION. INSERT "GO" GAGE END AS SHOWN. GAGE MUST PASS FREELY BETWEEN INDENTER TIPS.

"NO-GO" GAGING: OPERATE TOOL TO FULLY CLOSED POSITION. INSERT "NO-GO" GAGE END AS SHOWN. THE "NO-GO" MAY PARTIALLY ENTER THE INDENTER OPENING, BUT MUST NOT PASS COMPLETELY THROUGH THE OPENING.



GREEN

SELECTOR NUMBER	A GO DIA.	B NO-GO DIA.
1	.0280	.0330
2	.0320	.0370
3	.0360	.0410
4	.0390	.0440
5	.0450	.0500
6	.0520	.0570
7	.0590	.0640
8	.0680	.0730



RED

CONTACT SIZE	LOCATOR "TURRET" POSITION	WIRE COLOR	SELECTOR NUMBER
20-20	RED	1	2
16-22	BLUE	4	5
16-20	BLUE	1	2
16-16	BLUE	4	5
12-16	YELLOW	4	5
12-12	YELLOW		7
			8

QUANTITY	PART NUMBER	DESCRIPTION	ITEM
		MATERIALS LIST	

SINE Systems Corporation

A Subsidiary of Amphenol Corporation  
44724 Mowley Drive  
Carlton Township, MI 48036

INSTRUCTIONS FOR CA-5E12  
CRIMPER, PNEUMATIC

UNLESS OTHERWISE SPECIFIED	SIGNATURES	DATE	SIZE	SCALE	SHEET	OF
1) All dimensions are in inches.	DESIGN: BERNIM	6/2/09	C	10K/4	1	1
2) Pl. DEC 2000 1 Position 3.1/4"	CHECKER: NONE	6/3/09				
3) Pl. DEC 2000 1 Position 3.1/4"	ENGINEER: BERNIM					
4) Pl. DEC 2000 1 Position 3.1/4"	APPROVAL: BERNIM	6/3/09				
5) Revision Standard Per: A	CUSTOMER:					
6) Part: SS-20020						
7) Material Specification:						
8) Material Specification:						
9) Material Specification:						
10) Material Specification:						
11) Material Specification:						
12) Material Specification:						
13) Material Specification:						
14) Material Specification:						
15) Material Specification:						
16) Material Specification:						
17) Material Specification:						
18) Material Specification:						
19) Material Specification:						
20) Material Specification:						
21) Material Specification:						
22) Material Specification:						
23) Material Specification:						
24) Material Specification:						
25) Material Specification:						
26) Material Specification:						
27) Material Specification:						
28) Material Specification:						
29) Material Specification:						
30) Material Specification:						
31) Material Specification:						
32) Material Specification:						
33) Material Specification:						
34) Material Specification:						
35) Material Specification:						
36) Material Specification:						
37) Material Specification:						
38) Material Specification:						
39) Material Specification:						
40) Material Specification:						
41) Material Specification:						
42) Material Specification:						
43) Material Specification:						
44) Material Specification:						
45) Material Specification:						
46) Material Specification:						
47) Material Specification:						
48) Material Specification:						
49) Material Specification:						
50) Material Specification:						
51) Material Specification:						
52) Material Specification:						
53) Material Specification:						
54) Material Specification:						
55) Material Specification:						
56) Material Specification:						
57) Material Specification:						
58) Material Specification:						
59) Material Specification:						
60) Material Specification:						
61) Material Specification:						
62) Material Specification:						
63) Material Specification:						
64) Material Specification:						
65) Material Specification:						
66) Material Specification:						
67) Material Specification:						
68) Material Specification:						
69) Material Specification:						
70) Material Specification:						
71) Material Specification:						
72) Material Specification:						
73) Material Specification:						
74) Material Specification:						
75) Material Specification:						
76) Material Specification:						
77) Material Specification:						
78) Material Specification:						
79) Material Specification:						
80) Material Specification:						
81) Material Specification:						
82) Material Specification:						
83) Material Specification:						
84) Material Specification:						
85) Material Specification:						
86) Material Specification:						
87) Material Specification:						
88) Material Specification:						
89) Material Specification:						
90) Material Specification:						
91) Material Specification:						
92) Material Specification:						
93) Material Specification:						
94) Material Specification:						
95) Material Specification:						
96) Material Specification:						
97) Material Specification:						
98) Material Specification:						
99) Material Specification:						
100) Material Specification:						

4

3

2

1

4

3

2

1



REV ZONE		ECO		REVISIONS		DESCRIPTION	DATE	BY	APPR
AI	-	-	-	RELEASE NUMBER	016571		6/12/09	B.D.B.	M.R.F.

CONTACT LOCATOR  
"TURRET"  
THREE POSITIONS FOR  
SIZE 12, 16 & 20 MALE  
AND FEMALE CONTACTS

"TURRET" RELEASE LATCH

6.25 INCH  
MAXIMUM  
OPEN

2.30 INCH  
MAXIMUM  
CLOSED

SELECTOR FOR CRIMP  
SETTING

1.125 INCH MAX.

9.75 INCH MAXIMUM

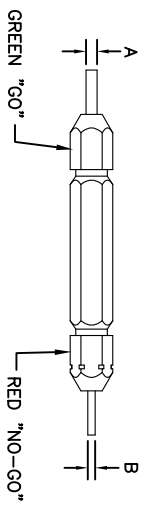
1.00 INCH MAX.

- NOTES:
- THE CA-5D12 IS A HAND OPERATED CRIMPER FOR ELECTRICAL CONTACTS. IT IS ADJUSTABLE TO 3 CONTACT SIZES (12, 16 & 20) AND 8 INDENTER CRIMP POSITIONS FOR DIFFERENT WIRE SIZES (12AWG THRU 26 AWG).
  - WEIGHT: 1.64 LBS
  - SELECTING CONTACT SIZE: PRESS THE RELEASE LATCH ON SIDE OF THE CONTACT LOCATOR "TURRET". ROTATE TO THE DESIRED CONTACT SIZE. THE TOP OF THE "TURRET" IS EMBOSSED WITH THE CONTACT SIZES.
  - SELECTING WIRE SIZE: REMOVE THE LOCKING CLIP. GRASP THE SELECTOR AND ROTATE TO THE DESIRED NUMBER.

GAGE PART NO.	A GO DIA.	B NO-GO DIA.	SELECTOR NUMBER
G125	.0390	.0440	4

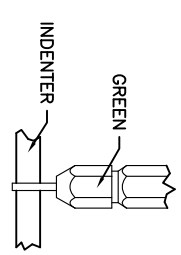
GAGING INSTRUCTIONS

CAUTION!  
DO NOT CRIMP GAGE!

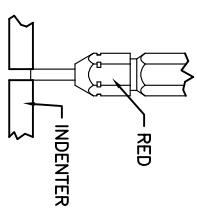


"GO" GAGING: OPERATE TOOL TO FULLY CLOSED POSITION. INSERT "GO" GAGE END AS SHOWN. GAGE MUST PASS FREELY BETWEEN INDENTER TIPS.

"NO-GO" GAGING: OPERATE TOOL TO FULLY CLOSED POSITION. INSERT "NO-GO" GAGE END AS SHOWN. THE "NO-GO" MAY PARTIALLY ENTER THE INDENTER OPENING, BUT MUST NOT PASS COMPLETELY THROUGH THE OPENING.



SELECTOR NUMBER	A GO DIA.	B NO-GO DIA.
1	.0280	.0330
2	.0320	.0370
3	.0360	.0410
4	.0390	.0440
5	.0450	.0500
6	.0520	.0570
7	.0590	.0640
8	.0880	.0730



CONTACT SIZE	LOCATOR "TURRET" POSITION	WIRE COLOR	1	2	3	4	5	6	7	8
20-20	RED	1	2	3	4					
16-22	BLUE	4	5	6						
16-20	BLUE	1	2	3	4					
16-16	BLUE	4	5	6						
12-16	YELLOW	4	5	6						
12-12	YELLOW									8

QUANTITY PART NUMBER MATERIALS LIST DESCRIPTION ITEM

UNLESS OTHERWISE SPECIFIED:  
 1) All dimensions are in inches.  
 2) Pl. Sec. 34.00  
 3) Pl. Sec. 34.00  
 4) Pl. Sec. 34.00  
 5) Pl. Sec. 34.00  
 6) Pl. Sec. 34.00  
 7) Pl. Sec. 34.00  
 8) Pl. Sec. 34.00  
 9) Pl. Sec. 34.00  
 10) Pl. Sec. 34.00  
 11) Pl. Sec. 34.00  
 12) Pl. Sec. 34.00  
 13) Pl. Sec. 34.00  
 14) Pl. Sec. 34.00  
 15) Pl. Sec. 34.00  
 16) Pl. Sec. 34.00  
 17) Pl. Sec. 34.00  
 18) Pl. Sec. 34.00  
 19) Pl. Sec. 34.00  
 20) Pl. Sec. 34.00  
 21) Pl. Sec. 34.00  
 22) Pl. Sec. 34.00  
 23) Pl. Sec. 34.00  
 24) Pl. Sec. 34.00  
 25) Pl. Sec. 34.00  
 26) Pl. Sec. 34.00  
 27) Pl. Sec. 34.00  
 28) Pl. Sec. 34.00  
 29) Pl. Sec. 34.00  
 30) Pl. Sec. 34.00  
 31) Pl. Sec. 34.00  
 32) Pl. Sec. 34.00  
 33) Pl. Sec. 34.00  
 34) Pl. Sec. 34.00  
 35) Pl. Sec. 34.00  
 36) Pl. Sec. 34.00  
 37) Pl. Sec. 34.00  
 38) Pl. Sec. 34.00  
 39) Pl. Sec. 34.00  
 40) Pl. Sec. 34.00  
 41) Pl. Sec. 34.00  
 42) Pl. Sec. 34.00  
 43) Pl. Sec. 34.00  
 44) Pl. Sec. 34.00  
 45) Pl. Sec. 34.00  
 46) Pl. Sec. 34.00  
 47) Pl. Sec. 34.00  
 48) Pl. Sec. 34.00  
 49) Pl. Sec. 34.00  
 50) Pl. Sec. 34.00  
 51) Pl. Sec. 34.00  
 52) Pl. Sec. 34.00  
 53) Pl. Sec. 34.00  
 54) Pl. Sec. 34.00  
 55) Pl. Sec. 34.00  
 56) Pl. Sec. 34.00  
 57) Pl. Sec. 34.00  
 58) Pl. Sec. 34.00  
 59) Pl. Sec. 34.00  
 60) Pl. Sec. 34.00  
 61) Pl. Sec. 34.00  
 62) Pl. Sec. 34.00  
 63) Pl. Sec. 34.00  
 64) Pl. Sec. 34.00  
 65) Pl. Sec. 34.00  
 66) Pl. Sec. 34.00  
 67) Pl. Sec. 34.00  
 68) Pl. Sec. 34.00  
 69) Pl. Sec. 34.00  
 70) Pl. Sec. 34.00  
 71) Pl. Sec. 34.00  
 72) Pl. Sec. 34.00  
 73) Pl. Sec. 34.00  
 74) Pl. Sec. 34.00  
 75) Pl. Sec. 34.00  
 76) Pl. Sec. 34.00  
 77) Pl. Sec. 34.00  
 78) Pl. Sec. 34.00  
 79) Pl. Sec. 34.00  
 80) Pl. Sec. 34.00  
 81) Pl. Sec. 34.00  
 82) Pl. Sec. 34.00  
 83) Pl. Sec. 34.00  
 84) Pl. Sec. 34.00  
 85) Pl. Sec. 34.00  
 86) Pl. Sec. 34.00  
 87) Pl. Sec. 34.00  
 88) Pl. Sec. 34.00  
 89) Pl. Sec. 34.00  
 90) Pl. Sec. 34.00  
 91) Pl. Sec. 34.00  
 92) Pl. Sec. 34.00  
 93) Pl. Sec. 34.00  
 94) Pl. Sec. 34.00  
 95) Pl. Sec. 34.00  
 96) Pl. Sec. 34.00  
 97) Pl. Sec. 34.00  
 98) Pl. Sec. 34.00  
 99) Pl. Sec. 34.00  
 100) Pl. Sec. 34.00

PROCESS SPECIFICATIONS:  
 NONE  
 MATERIAL SPECIFICATIONS:  
 NONE  
 THE USE OF THIS DRAWING IS LIMITED TO THE SPECIFICATIONS AND REQUIREMENTS OF THE ORIGINAL DRAWING. ANY REVISIONS OR MODIFICATIONS ARE SUBJECT TO APPROVAL BY THE ORIGINAL DRAWING ENGINEER.  
 DRAWING ENGINEER: BERNIM  
 DATE: 6/3/09  
 CHECKED: NONE  
 DATE: 6/3/09  
 DESIGNED: NONE  
 DATE: 6/3/09  
 APPROVAL: BERNIM  
 DATE: 6/3/09  
 CUSTOMER: BERNIM  
 DATE: 6/3/09  
 INSTRUCTIONS FOR CA-5D12 CRIMPER, HAND, MACHINED CONTACTS  
 SIZE: 10K44  
 SCALE: NONE  
 SHEET: 1 OF 1

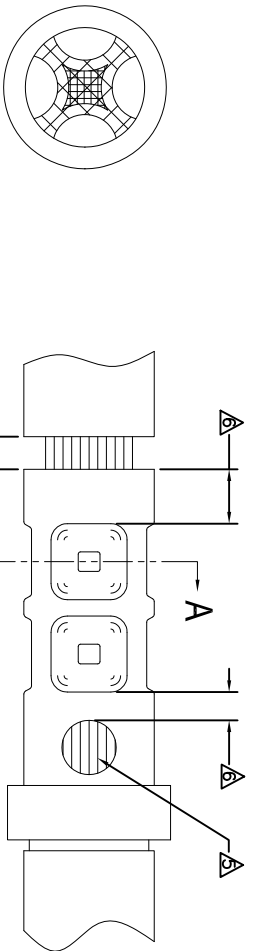
REVOLUTIONS		DESCRIPTION	DATE	BY	APPR
REV	ZONE	ECO	RELEASE NUMBER 016571	B.D.B.	M.R.F.
A1	-	-			

CONTACT P/N	SIZE TYPE	WIRE SIZE	REF. ONLY TENSILE LBS[N]
AT60-202-16XX	16PIN	1.5mm <sup>2</sup> 16AWG	35[156]
AT62-201-16XX	16SOC	1.0mm <sup>2</sup> 18AWG 0.75mm <sup>2</sup> 20AWG	25[111]
		0.50mm <sup>2</sup>	20[89]

RECOMMENDED STRIP LENGTH	
CONTACT SIZE	STRIP LENGTH INCH[MM]
16	0.250-0.312[6.35-7.92]

CRIMP TOOLING						
CONTACT SIZE	CRIMP TOOL PART NUMBER	CONTACT LOCATOR "TURRET" POSITION	WIRE SELECTOR NUMBER	GO GAGE INCH[MM]	"NOGO" GAGE INCH[MM]	REMARKS
16	CA-5D12 CA-5E12	BLUE	6	0.052[1.32]	0.057[1.45]	
16	CA-5D12 CA-5E12	BLUE	4	0.039[.991]	0.044[1.12]	SIZE 16 WITH 20 AWG WIRE

- NOTES: UNLESS OTHERWISE SPECIFIED
- 1. MINIMUM +/-0.0005 [0.013] TOLERANCE STEEL GAGE PINS. DO NOT CRIMP GAGE PINS. CLOSE DIE, THEN USE GAGE PINS.
  - 2. WHEN XX=31, CONTACT PLATING IS GOLD WHEN XX=141, CONTACT PLATING IS NICKEL
  - 3. PULL RATE OF 1.0 IN [25.4] PER MINUTE. ACTUAL STRENGTH DEPENDS ON WIRE SIZE.
  - 4. FOR CONTACT PERFORMANCE, MATERIAL SPECIFICATIONS AND APPLICATION DETAILS, SEE DRAWING S2-15217. CONDUCTOR STRANDS MUST BE VISIBLE THRU THE INSPECTION HOLE PRIOR TO CRIMP.
  - 5. PROPER CRIMP TOOLING WILL PRODUCE A CRIMP CENTERED BETWEEN THE INSPECTION HOLE AND CRIMP BARREL END.
  - 6. WIRE SIZES PER SAE J1128 AND J1560 [DIN 72551-6] REFERENCE INSTRUCTION MANUALS S2-15219 AND S2-15220 FOR CA-5D12 AND CA-5E12 HAND AND PNEUMATIC CRIMPER.
  - 7. THE CRIMP HEIGHT DIMENSION AFTER CRIMPING MAY VARY FROM THE VALUES LISTED FOR THE "GO-NOGO" PINS.



QUANTITY	PART NUMBER	DESCRIPTION	ITEM
	MATERIALS LIST		

UNLESS OTHERWISE SPECIFIED		SIGNATURES		DATE	
1) All dimensions are in inches.	2) All dimensions are in millimeters.	DRAWN: BERNUIM	6/3/09	ENGINEER: RONE	6/3/09
3) Pl. SEE 44.00 [1.117] Precision 31/64	4) Pl. SEE 44.01 [1.117] Precision 31/64	APPROVAL: BERNUIM	6/3/09	APPROVAL: BERNUIM	6/3/09
5) Fabrication Standards Per: SS-20020	6) Pl. SEE 44.02 [1.117] Precision 31/64	CUSTOMER: MA			

PROCESS SPECIFICATIONS		THE USE OF THIS DRAWING IS LIMITED TO THE SPECIFIC APPLICATIONS AND PERFORMANCE INDICATED THEREON. ANY OTHER USE IS WITHOUT THE WRITTEN PERMISSION OF AMPHENOL CORP. ALL DIMENSIONS ARE SUBJECT TO NORMAL DOCUMENT REVISION HEREON UNLESS OTHERWISE INDICATED.	
SCALE: NONE	SIZE: F (SEE NOTE 6)	CRIMP INFORMATION	SOLID MACHINED CONTACTS
		S2-15218	
		SHEET 1	OF 1

REVOLUTIONS		DESCRIPTION	DATE	BY	APPR
REV	ZONE	ECO	6/12/08	B.D.B.	M.R.F.
AT	-	-	RELEASE NUMBER 016871		

SOLID CONTACT SIZE	SOLID CONTACT PART NUMBERS		WIRE SIZE AVG (mm <sup>2</sup> )	RECOMMENDED STRIP LENGTH INCH (mm)	MIN CONTACT RETENTION LBS (N)	REF CRIMP TENSILE LBS (N)	MAX RATED AMPS @ 125°C CONTINUOUS
	PN	SOCKET					
16	AT60-202-16**	AT62-201-16**	16-20 [1.5-0.5]	0.25-0.31 [6.35-7.92]	25 [1111]	35-20 [156-89]	13

S&P CONTACT SIZE	STAMPED CONTACT PART NUMBERS		WIRE SIZE AVG (mm <sup>2</sup> )	WIRE INSULATION O.D. RANGE	RECOMMENDED STRIP LENGTH INCH (mm)	MIN CONTACT RETENTION LBS (N)	REF CRIMP TENSILE LBS (N)	MAX RATED AMPS @ 125°C CONTINUOUS
	PN	SOCKET						
16	AT60-14-01**	AT62-14-01**	14-16 [2.0-1.0]	.100 - .150 [2.54 - 3.81]	0.150-0.200 [3.81-5.08]	25 [1111]	25 [1111]	13
16	AT60-16-01**	AT62-16-01**	16-18 [1.0-0.75]	.075 - .100 [1.90 - 2.54]	0.150-0.200 [3.81-5.08]	25 [1111]	25 [1111]	13
16	AT60-16-06**	AT62-16-06**	18-20 [0.75-0.50]	.055 - .095 [1.40 - 2.41]	0.150-0.200 [3.81-5.08]	25 [1111]	25-15 [111+67]	13

CONTACT RESISTANCE STRENGTH (LESS DROP THROUGH WIRE)			
WIRE AWG	TEST CURRENT	MILLIVOLT DROP SOLID	MILLIVOLT DROP S&P
14	18	60	100
16	13	60	100
18	10	60	100
20	7.5	60	100

MATERIAL SPECIFICATION AND PLATING ** CODES	
PN: COPPER ALLOY	SOLID MACHINED CONTACT PLATING OPTIONS: $\Delta$
SOCKET: COPPER ALLOY WITH STAINLESS STEEL SLEEVE	31= GOLD*
	141= NICKEL
	STAMPED CONTACT PLATING OPTIONS: $\Delta$
	22= NICKEL
	44= GOLD*
	89= SELECTIVE GOLD*
GOLD* = PLATING IS AVAILABLE (RECOMMENDED) FOR ONLY (<5V) CIRCUIT APPLICATIONS	
MATERIALS AND PLATINGS ARE ROHS COMPLIANT	

**NOTES: UNLESS OTHERWISE SPECIFIED**

- ALL DIMENSIONS ARE INCHES(MM).
  - ALL FORCES ARE IN LBS(POUNDS) AND "N" (NEWTONS).
  - CONTACT RETENTION TEST PULL RATE SHALL BE 1.0 INCH/25.4 PER MINUTE MAXIMUM. WIRE SIZE WILL AFFECT THE TRUE STRENGTH OF THE CRIMP.
  - WIRE SIZES AND INSULATION RANGES ARE FOR REFERENCE ONLY. THE ACTUAL INSULATION RANGE DEPENDS ON CONNECTOR GROMMET SEALING SIZE.
- SEE SPECIFICATIONS LISTED BELOW FOR INDIVIDUAL CRIMP INFORMATION:
- |                  |          |                    |       |
|------------------|----------|--------------------|-------|
| *SOLID* CONTACTS | SIZE     | *STAMPED* CONTACTS | SIZE  |
|                  | S2-15218 | S2-15222           | 16    |
|                  |          | S2-15221           | 16/20 |
- MAXIMUM RATED CURRENT IN CHART DEPENDS ON CONTACT SIZE. ACTUAL RATED CURRENT DEPENDS ON WIRE SIZE.  
 CONTACT FACTORY FOR ALL AVAILABLE PLATING ON SPECIFIC CONTACTS.  
 AMPHENOL SINE PERFORMANCE SPECIFICATIONS REQUIRE THE USE OF AMPHENOL SINE APPROVED TOOLING.

QUANTITY	PART NUMBER	DESCRIPTION	ITEM
MATERIALS LIST			
UNLESS OTHERWISE SPECIFIED		SIGNATURES	
1) All dimensions are in inches.		DATE	DATE
2) Pl. SEE 30.00		ORDERED	6/3/09
3) Pl. SEE 30.00		ORDERED	6/3/09
4) Pl. SEE 30.00		ORDERED	6/3/09
5) Pl. SEE 30.00		ORDERED	6/3/09
6) Pl. SEE 30.00		ORDERED	6/3/09
7) Pl. SEE 30.00		ORDERED	6/3/09
8) Pl. SEE 30.00		ORDERED	6/3/09
9) Pl. SEE 30.00		ORDERED	6/3/09
10) Pl. SEE 30.00		ORDERED	6/3/09
11) Pl. SEE 30.00		ORDERED	6/3/09
12) Pl. SEE 30.00		ORDERED	6/3/09
13) Pl. SEE 30.00		ORDERED	6/3/09
14) Pl. SEE 30.00		ORDERED	6/3/09
15) Pl. SEE 30.00		ORDERED	6/3/09
16) Pl. SEE 30.00		ORDERED	6/3/09
17) Pl. SEE 30.00		ORDERED	6/3/09
18) Pl. SEE 30.00		ORDERED	6/3/09
19) Pl. SEE 30.00		ORDERED	6/3/09
20) Pl. SEE 30.00		ORDERED	6/3/09
21) Pl. SEE 30.00		ORDERED	6/3/09
22) Pl. SEE 30.00		ORDERED	6/3/09
23) Pl. SEE 30.00		ORDERED	6/3/09
24) Pl. SEE 30.00		ORDERED	6/3/09
25) Pl. SEE 30.00		ORDERED	6/3/09
26) Pl. SEE 30.00		ORDERED	6/3/09
27) Pl. SEE 30.00		ORDERED	6/3/09
28) Pl. SEE 30.00		ORDERED	6/3/09
29) Pl. SEE 30.00		ORDERED	6/3/09
30) Pl. SEE 30.00		ORDERED	6/3/09
31) Pl. SEE 30.00		ORDERED	6/3/09
32) Pl. SEE 30.00		ORDERED	6/3/09
33) Pl. SEE 30.00		ORDERED	6/3/09
34) Pl. SEE 30.00		ORDERED	6/3/09
35) Pl. SEE 30.00		ORDERED	6/3/09
36) Pl. SEE 30.00		ORDERED	6/3/09
37) Pl. SEE 30.00		ORDERED	6/3/09
38) Pl. SEE 30.00		ORDERED	6/3/09
39) Pl. SEE 30.00		ORDERED	6/3/09
40) Pl. SEE 30.00		ORDERED	6/3/09
41) Pl. SEE 30.00		ORDERED	6/3/09
42) Pl. SEE 30.00		ORDERED	6/3/09
43) Pl. SEE 30.00		ORDERED	6/3/09
44) Pl. SEE 30.00		ORDERED	6/3/09
45) Pl. SEE 30.00		ORDERED	6/3/09
46) Pl. SEE 30.00		ORDERED	6/3/09
47) Pl. SEE 30.00		ORDERED	6/3/09
48) Pl. SEE 30.00		ORDERED	6/3/09
49) Pl. SEE 30.00		ORDERED	6/3/09
50) Pl. SEE 30.00		ORDERED	6/3/09
51) Pl. SEE 30.00		ORDERED	6/3/09
52) Pl. SEE 30.00		ORDERED	6/3/09
53) Pl. SEE 30.00		ORDERED	6/3/09
54) Pl. SEE 30.00		ORDERED	6/3/09
55) Pl. SEE 30.00		ORDERED	6/3/09
56) Pl. SEE 30.00		ORDERED	6/3/09
57) Pl. SEE 30.00		ORDERED	6/3/09
58) Pl. SEE 30.00		ORDERED	6/3/09
59) Pl. SEE 30.00		ORDERED	6/3/09
60) Pl. SEE 30.00		ORDERED	6/3/09
61) Pl. SEE 30.00		ORDERED	6/3/09
62) Pl. SEE 30.00		ORDERED	6/3/09
63) Pl. SEE 30.00		ORDERED	6/3/09
64) Pl. SEE 30.00		ORDERED	6/3/09
65) Pl. SEE 30.00		ORDERED	6/3/09
66) Pl. SEE 30.00		ORDERED	6/3/09
67) Pl. SEE 30.00		ORDERED	6/3/09
68) Pl. SEE 30.00		ORDERED	6/3/09
69) Pl. SEE 30.00		ORDERED	6/3/09
70) Pl. SEE 30.00		ORDERED	6/3/09
71) Pl. SEE 30.00		ORDERED	6/3/09
72) Pl. SEE 30.00		ORDERED	6/3/09
73) Pl. SEE 30.00		ORDERED	6/3/09
74) Pl. SEE 30.00		ORDERED	6/3/09
75) Pl. SEE 30.00		ORDERED	6/3/09
76) Pl. SEE 30.00		ORDERED	6/3/09
77) Pl. SEE 30.00		ORDERED	6/3/09
78) Pl. SEE 30.00		ORDERED	6/3/09
79) Pl. SEE 30.00		ORDERED	6/3/09
80) Pl. SEE 30.00		ORDERED	6/3/09
81) Pl. SEE 30.00		ORDERED	6/3/09
82) Pl. SEE 30.00		ORDERED	6/3/09
83) Pl. SEE 30.00		ORDERED	6/3/09
84) Pl. SEE 30.00		ORDERED	6/3/09
85) Pl. SEE 30.00		ORDERED	6/3/09
86) Pl. SEE 30.00		ORDERED	6/3/09
87) Pl. SEE 30.00		ORDERED	6/3/09
88) Pl. SEE 30.00		ORDERED	6/3/09
89) Pl. SEE 30.00		ORDERED	6/3/09
90) Pl. SEE 30.00		ORDERED	6/3/09
91) Pl. SEE 30.00		ORDERED	6/3/09
92) Pl. SEE 30.00		ORDERED	6/3/09
93) Pl. SEE 30.00		ORDERED	6/3/09
94) Pl. SEE 30.00		ORDERED	6/3/09
95) Pl. SEE 30.00		ORDERED	6/3/09
96) Pl. SEE 30.00		ORDERED	6/3/09
97) Pl. SEE 30.00		ORDERED	6/3/09
98) Pl. SEE 30.00		ORDERED	6/3/09
99) Pl. SEE 30.00		ORDERED	6/3/09
100) Pl. SEE 30.00		ORDERED	6/3/09

4 3 2 1

Компания «Океан Электроники» предлагает заключение долгосрочных отношений при поставках импортных электронных компонентов на взаимовыгодных условиях!

Наши преимущества:

- Поставка оригинальных импортных электронных компонентов напрямую с производств Америки, Европы и Азии, а так же с крупнейших складов мира;
- Широкая линейка поставок активных и пассивных импортных электронных компонентов (более 30 млн. наименований);
- Поставка сложных, дефицитных, либо снятых с производства позиций;
- Оперативные сроки поставки под заказ (от 5 рабочих дней);
- Экспресс доставка в любую точку России;
- Помощь Конструкторского Отдела и консультации квалифицированных инженеров;
- Техническая поддержка проекта, помощь в подборе аналогов, поставка прототипов;
- Поставка электронных компонентов под контролем ВП;
- Система менеджмента качества сертифицирована по Международному стандарту ISO 9001;
- При необходимости вся продукция военного и аэрокосмического назначения проходит испытания и сертификацию в лаборатории (по согласованию с заказчиком);
- Поставка специализированных компонентов военного и аэрокосмического уровня качества (Xilinx, Altera, Analog Devices, Intersil, Interpoint, Microsemi, Actel, Aeroflex, Peregrine, VPT, Syfer, Eurofarad, Texas Instruments, MS Kennedy, Miteq, Cobham, E2V, MA-COM, Hittite, Mini-Circuits, General Dynamics и др.);

Компания «Океан Электроники» является официальным дистрибьютором и эксклюзивным представителем в России одного из крупнейших производителей разъемов военного и аэрокосмического назначения «JONHON», а так же официальным дистрибьютором и эксклюзивным представителем в России производителя высокотехнологичных и надежных решений для передачи СВЧ сигналов «FORSTAR».



## JONHON

«JONHON» (основан в 1970 г.)

Разъемы специального, военного и аэрокосмического назначения:

(Применяются в военной, авиационной, аэрокосмической, морской, железнодорожной, горно- и нефтедобывающей отраслях промышленности)

«FORSTAR» (основан в 1998 г.)

ВЧ соединители, коаксиальные кабели,  
кабельные сборки и микроволновые компоненты:

(Применяются в телекоммуникациях гражданского и специального назначения, в средствах связи, РЛС, а так же военной, авиационной и аэрокосмической отраслях промышленности).



Телефон: 8 (812) 309-75-97 (многоканальный)

Факс: 8 (812) 320-03-32

Электронная почта: [ocean@oceanchips.ru](mailto:ocean@oceanchips.ru)

Web: <http://oceanchips.ru/>

Адрес: 198099, г. Санкт-Петербург, ул. Калинина, д. 2, корп. 4, лит. А