

# LTM2884

## Isolated USB Transceiver with Isolated Power

### DESCRIPTION

Demonstration circuit 1789A is an isolated USB transceiver with isolated power featuring the LTM<sup>®</sup>2884. The demo circuit features an EMI optimized circuit configuration and printed circuit board layout. All components are integrated into the  $\mu$ Module<sup>®</sup> isolator. The demo circuit operates from a supply on  $V_{CC}$  and/or  $V_{BUS}$ . The part generates an isolated output voltage on  $V_{CC2}$  and communicates all

necessary signaling across the isolation barrier through LTC's isolator  $\mu$ Module technology.

**Design files for this circuit board are available at <http://www.linear.com/demo>**

LT, LT, LTC, LTM, Linear Technology, the Linear logo and  $\mu$ Module are registered trademarks of Linear Technology Corporation. All other trademarks are the property of their respective owners.

### PERFORMANCE SUMMARY ( $T_A = 25^\circ\text{C}$ )

SYMBOL	PARAMETER	CONDITIONS	MIN	TYP	MAX	UNITS
$V_{CC}$	Operating Supply Range (Isolated Power Input)		4.4	12	16.5	V
$V_{BUS}$	Operating Supply Range (USB Bus Power Input)		4.4	5	16.5	V
$V_{CC2}$	Regulated Output Voltage	$V_{CC} = V_{BUS} = 4.4\text{V}, I_{CC2} = 200\text{mA}$	4.75	5	5.25	V
		$V_{CC} = 8.1\text{V}, I_{CC2} = 500\text{mA}$	4.75	5	5.25	V
$t_{LDR}$	Low Speed Data Rate			1.5		Mbps
$t_{FDR}$	Full Speed Data Rate			12		Mbps
$V_{IORM}$	Maximum Working Insulation Voltage	GND to GND2	560			$V_{DC}$
			400			$V_{RMS}$
	Common Mode Transient Immunity		30			kV/ $\mu$ s

### OPERATING PRINCIPLES

The LTM2884 contains an isolated DC/DC converter delivering power to  $V_{CC2}$  at 5V from the input supply  $V_{CC}$  and/or  $V_{BUS}$ . Isolation is maintained by the separation of GND and GND2 where significant operating voltages and transients can exist without affecting the operation of the LTM2884. The logic side ON pin enables or shuts down the LTM2884. All logic side signals are referenced to the logic supply pin  $V_{LO}$ . The LTM2884 has two power supply inputs,  $V_{CC}$  and  $V_{BUS}$ . For applications requiring more than 200mA from  $V_{CC2}$ ,  $V_{CC}$  must be connected to an external supply of 8.1V to 16.5V.  $V_{BUS}$  may be connected

to USB bus power or to the external supply. For applications requiring 200mA or less connect  $V_{CC}$  and  $V_{BUS}$  to USB bus power.

Upstream USB signaling is controlled by the bidirectional pins  $D1^+$  and  $D1^-$ . A 1.5k pull-up resistor is automatically configured dependent upon the connected downstream peripheral device. For full speed and low speed devices the pull-up is asserted on  $D1^+$  and  $D1^-$ , respectively. The downstream USB data pins,  $D2^+$  and  $D2^-$ , each have integrated 15k pull-down resistors.

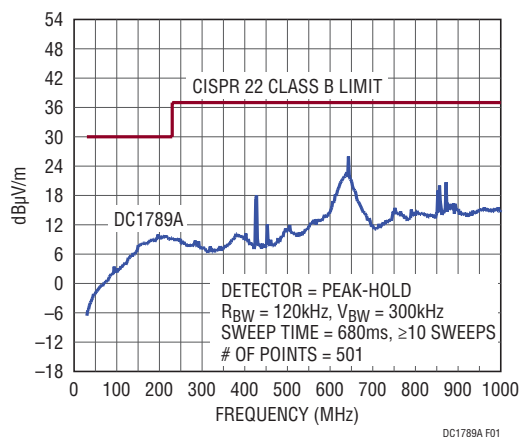
## OPERATING PRINCIPLES

The LTM2884 includes a suspend power feature that when enabled (high) reduces the supply current on  $V_{CC}$  and  $V_{BUS}$  when the upstream USB bus is idle. However, in this mode, if a downstream device is connected or disconnected from the bus or remote wake-up functionality is configured, it will not be recognized by the LTM2884 and relayed to the host. A resume command at the upstream side will wake up the LTM2884 and a re-numeration by the host will be required. If suspend power is configured low the LTM2884 operates in a low power mode but will respond to disconnects, reconnects, downstream wake-up commands, or host resume commands.

The demo circuit has been designed and optimized for low RF emissions. EMI mitigation techniques used include the following:

1. Board/ground plane size has been minimized. This reduces the dipole antenna formed between the logic side and isolated side ground planes.
2. Top signal routing and ground floods have been optimized to reduce signal loops, minimizing differential mode radiation.

EMI performance is shown in Figure 1, measured using a gigahertz transverse electromagnetic (GTEM) cell and method detailed in IEC 61000-4-20, "Testing and Measurement Techniques – Emission and Immunity Testing in Transverse Electromagnetic Waveguides."



**Figure 1. DC1789A Radiated Emissions, Normalized to 10m per IEC 61000-4-20**

## QUICK START PROCEDURE

Demonstration circuit 1789A makes it easy to set up and evaluate the performance of the LTM2884. Refer to Figure 2 for proper measurement equipment setup and follow the procedure below.

NOTE: When measuring the input or output voltage ripple or high speed signals, care must be taken to avoid a long ground lead on the oscilloscope probe.

1. Place jumpers in their default positions:

**JP1** V<sub>CC</sub> supply in the V<sub>BUS</sub> position

**JP2** V<sub>BUS</sub> supply in the V<sub>BUS</sub> position

**JP3** SUSPEND POWER in the OFF position

**JP4** C2 in the OUT position

NOTE: To simulate a hub/splitter output, C2 can be jumpered IN. The additional capacitance reduces V<sub>BUS</sub> droop on downstream device plug-in.

2. Connect USB cable from computer to input side (J1) of the demo board.
3. Connect computer mouse, low speed device, or USB memory stick, typically high speed device, to output side (J2) of demo board.
4. Verify proper operation of mouse or memory stick.

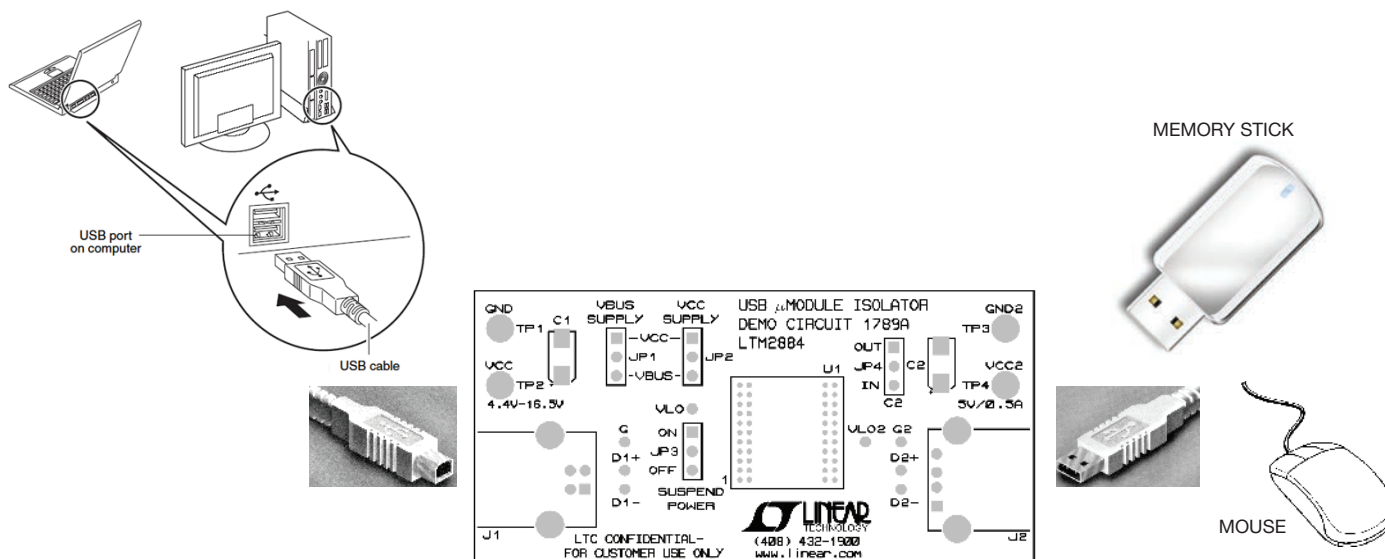
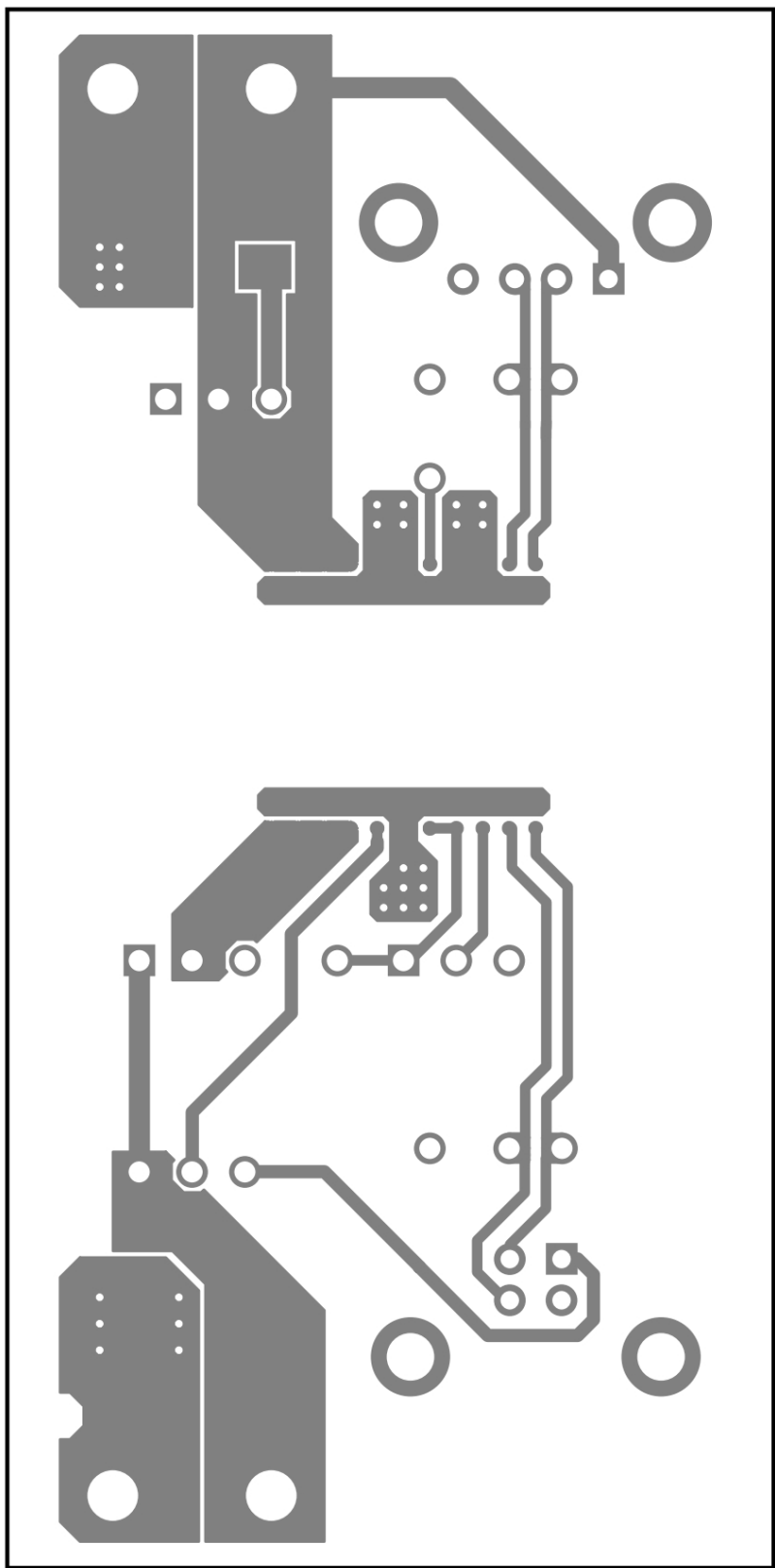


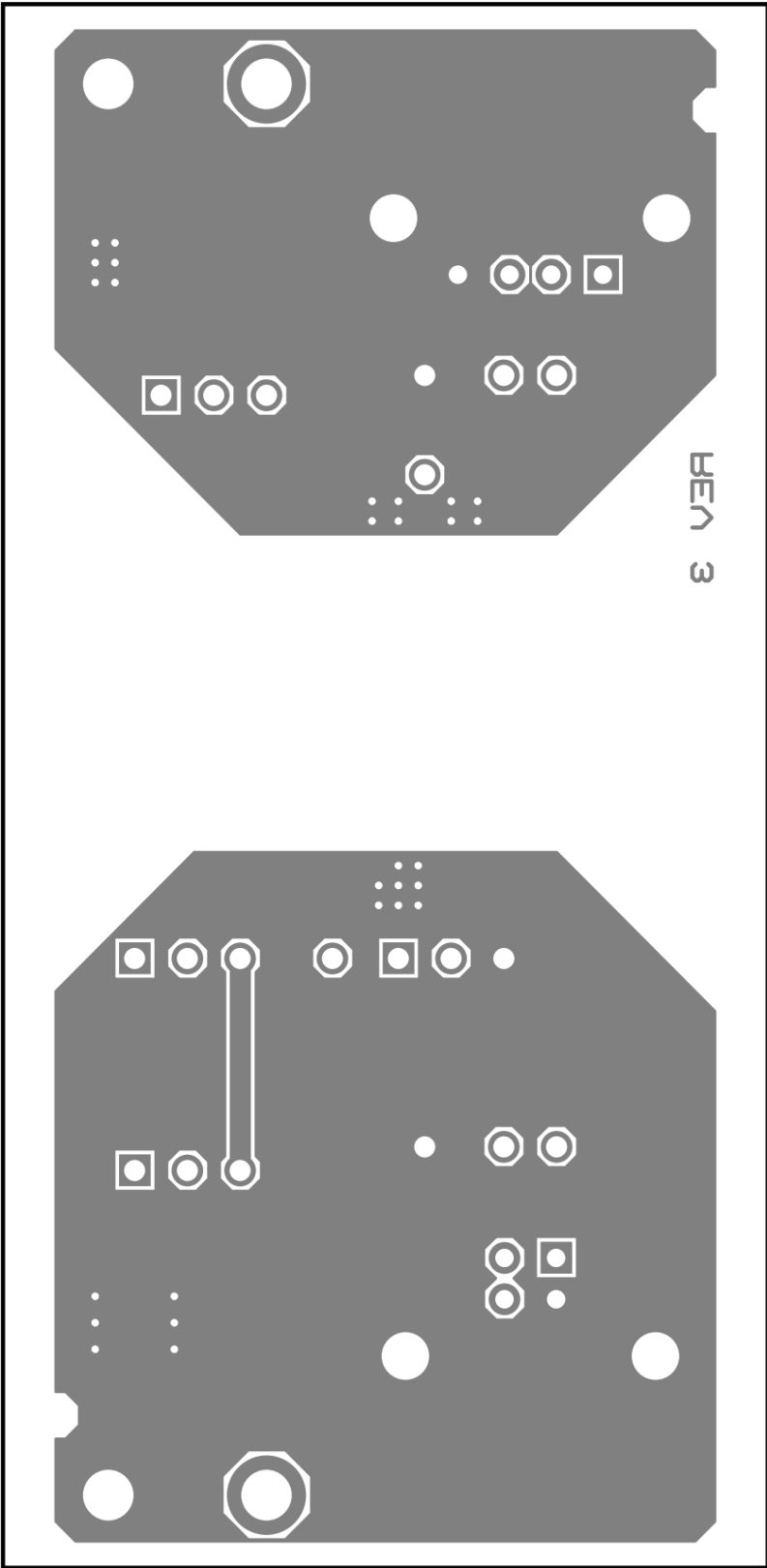
Figure 2. Demo Board Setup

**PCB LAYOUT**



Layer 1. Top Layer

PCB LAYOUT



Layer 2. Bottom Layer

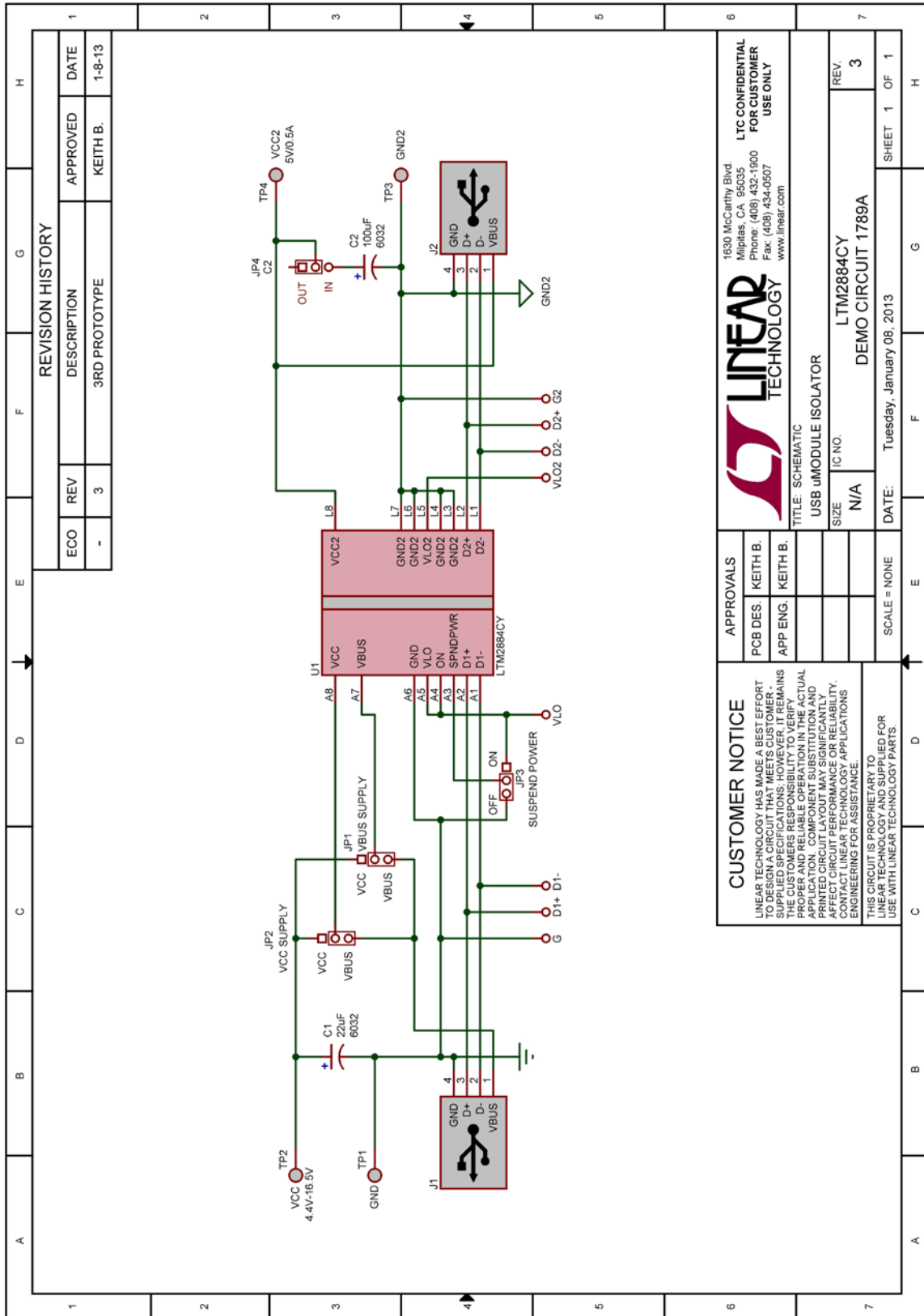
# DEMO MANUAL DC1789A

---

## PARTS LIST

ITEM	QTY	REFERENCE	PART DESCRIPTION	MANUFACTURER/PART NUMBER
<b>Required Circuit Components</b>				
1	1	U1	I.C., LTM2884CY	LINEAR LTM2884CY#PBF
<b>Hardware/Components (For Demo Board Only)</b>				
2	1	C1	CAP., TANT 22F 25V 20% 'C'	AVX TAJC226M025R
3	1	C2	CAP., TANT 100F 10V 20% 'C'	AVX TPSC107M010R0150
4	1	J1	USB RECEPTACLE TYPE B	MILL-MAX 897-43-004-90-00000
5	1	J2	USB RECEPTACLE TYPE A	MILL-MAX 896-43-004-90-00000
6	3	JP1-4	0.1" SINGLE ROW HEADER, 3-PIN	SAMTEC TSW-103-26-L-S
7	3	JP1-4	SHUNT	SAMTEC SNT-100-BK-G
8	4	TP1-4	TESTPOINT, TURRET, 0.095	MILL-MAX 2501-2-00-80-00-00-07-0

**SCHEMATIC DIAGRAM**



REVISION HISTORY			
ECO	REV	DESCRIPTION	APPROVED
-	3	3RD PROTOTYPE	KEITH B.
			DATE
			1-8-13

**LINTECH**  
TECHNOLOGY

1530 McCarthy Blvd.  
Milpitas, CA 95035  
Phone: (408) 432-1900  
Fax: (408) 434-0607  
www.linear.com

**LTC CONFIDENTIAL**  
FOR CUSTOMER  
USE ONLY

---

TITLE: SCHEMATIC  
USB uMODULE ISOLATOR

APPROVALS	KEITH B.
PCB DES.	KEITH B.
APP ENG.	KEITH B.
SIZE	N/A
IC NO.	LTM2884CY
REV.	3

SCALE = NONE DATE: Tuesday, January 08, 2013 SHEET 1 OF 1

**CUSTOMER NOTICE**

LINTECH TECHNOLOGY HAS MADE A BEST EFFORT TO VERIFY THE ACCURACY OF THIS SCHEMATIC. HOWEVER, IT REMAINS THE CUSTOMER'S RESPONSIBILITY TO VERIFY THE PROPER AND RELIABLE OPERATION IN THE ACTUAL APPLICATION. COMPONENT SUBSTITUTION AND APPLIED CIRCUIT LAYOUT MAY SIGNIFICANTLY AFFECT THE PERFORMANCE OF THE SCHEMATIC. CONTACT LINTECH TECHNOLOGY APPLICATIONS ENGINEERING FOR ASSISTANCE.

THIS CIRCUIT IS PROPRIETARY TO LINTECH TECHNOLOGY AND SUPPLIED FOR USE WITH LINTECH TECHNOLOGY PARTS.



# DEMO MANUAL DC1789A

---

## DEMONSTRATION BOARD IMPORTANT NOTICE

Linear Technology Corporation (LTC) provides the enclosed product(s) under the following **AS IS** conditions:

This demonstration board (DEMO BOARD) kit being sold or provided by Linear Technology is intended for use for **ENGINEERING DEVELOPMENT OR EVALUATION PURPOSES ONLY** and is not provided by LTC for commercial use. As such, the DEMO BOARD herein may not be complete in terms of required design-, marketing-, and/or manufacturing-related protective considerations, including but not limited to product safety measures typically found in finished commercial goods. As a prototype, this product does not fall within the scope of the European Union directive on electromagnetic compatibility and therefore may or may not meet the technical requirements of the directive, or other regulations.

If this evaluation kit does not meet the specifications recited in the DEMO BOARD manual the kit may be returned within 30 days from the date of delivery for a full refund. **THE FOREGOING WARRANTY IS THE EXCLUSIVE WARRANTY MADE BY THE SELLER TO BUYER AND IS IN LIEU OF ALL OTHER WARRANTIES, EXPRESSED, IMPLIED, OR STATUTORY, INCLUDING ANY WARRANTY OF MERCHANTABILITY OR FITNESS FOR ANY PARTICULAR PURPOSE. EXCEPT TO THE EXTENT OF THIS INDEMNITY, NEITHER PARTY SHALL BE LIABLE TO THE OTHER FOR ANY INDIRECT, SPECIAL, INCIDENTAL, OR CONSEQUENTIAL DAMAGES.**

The user assumes all responsibility and liability for proper and safe handling of the goods. Further, the user releases LTC from all claims arising from the handling or use of the goods. Due to the open construction of the product, it is the user's responsibility to take any and all appropriate precautions with regard to electrostatic discharge. Also be aware that the products herein may not be regulatory compliant or agency certified (FCC, UL, CE, etc.).

No License is granted under any patent right or other intellectual property whatsoever. **LTC assumes no liability for applications assistance, customer product design, software performance, or infringement of patents or any other intellectual property rights of any kind.**

LTC currently services a variety of customers for products around the world, and therefore this transaction **is not exclusive**.

**Please read the DEMO BOARD manual prior to handling the product.** Persons handling this product must have electronics training and observe good laboratory practice standards. **Common sense is encouraged.**

This notice contains important safety information about temperatures and voltages. For further safety concerns, please contact a LTC application engineer.

Mailing Address:

Linear Technology  
1630 McCarthy Blvd.  
Milpitas, CA 95035

Copyright © 2004, Linear Technology Corporation



Компания «Океан Электроники» предлагает заключение долгосрочных отношений при поставках импортных электронных компонентов на взаимовыгодных условиях!

Наши преимущества:

- Поставка оригинальных импортных электронных компонентов напрямую с производств Америки, Европы и Азии, а так же с крупнейших складов мира;
- Широкая линейка поставок активных и пассивных импортных электронных компонентов (более 30 млн. наименований);
- Поставка сложных, дефицитных, либо снятых с производства позиций;
- Оперативные сроки поставки под заказ (от 5 рабочих дней);
- Экспресс доставка в любую точку России;
- Помощь Конструкторского Отдела и консультации квалифицированных инженеров;
- Техническая поддержка проекта, помощь в подборе аналогов, поставка прототипов;
- Поставка электронных компонентов под контролем ВП;
- Система менеджмента качества сертифицирована по Международному стандарту ISO 9001;
- При необходимости вся продукция военного и аэрокосмического назначения проходит испытания и сертификацию в лаборатории (по согласованию с заказчиком);
- Поставка специализированных компонентов военного и аэрокосмического уровня качества (Xilinx, Altera, Analog Devices, Intersil, Interpoint, Microsemi, Actel, Aeroflex, Peregrine, VPT, Syfer, Eurofarad, Texas Instruments, MS Kennedy, Miteq, Cobham, E2V, MA-COM, Hittite, Mini-Circuits, General Dynamics и др.);

Компания «Океан Электроники» является официальным дистрибьютором и эксклюзивным представителем в России одного из крупнейших производителей разъемов военного и аэрокосмического назначения «**JONHON**», а так же официальным дистрибьютором и эксклюзивным представителем в России производителя высокотехнологичных и надежных решений для передачи СВЧ сигналов «**FORSTAR**».



## JONHON

«**JONHON**» (основан в 1970 г.)

Разъемы специального, военного и аэрокосмического назначения:

(Применяются в военной, авиационной, аэрокосмической, морской, железнодорожной, горно- и нефтедобывающей отраслях промышленности)

«**FORSTAR**» (основан в 1998 г.)

ВЧ соединители, коаксиальные кабели,  
кабельные сборки и микроволновые компоненты:

(Применяются в телекоммуникациях гражданского и специального назначения, в средствах связи, РЛС, а так же военной, авиационной и аэрокосмической отраслях промышленности).



Телефон: 8 (812) 309-75-97 (многоканальный)

Факс: 8 (812) 320-03-32

Электронная почта: [ocean@oceanchips.ru](mailto:ocean@oceanchips.ru)

Web: <http://oceanchips.ru/>

Адрес: 198099, г. Санкт-Петербург, ул. Калинина, д. 2, корп. 4, лит. А