

ADG733/ADG734

FEATURES

- 1.8 V to 5.5 V Single Supply
- ± 2.5 V Dual Supply
- 2.5 Ω On Resistance
- 0.5 Ω On Resistance Flatness
- 100 pA Leakage Currents
- 19 ns Switching Times
- Triple SPDT: ADG733
- Quad SPDT: ADG734
- Small TSSOP and QSOP Packages
- Low Power Consumption
- TTL/CMOS Compatible Inputs

APPLICATIONS

- Data Acquisition Systems
- Communication Systems
- Relay Replacement
- Audio and Video Switching
- Battery Powered Systems

GENERAL DESCRIPTION

The ADG733 and ADG734 are low voltage, CMOS devices comprising three independently selectable SPDT (single pole, double throw) switches and four independently selectable SPDT switches respectively.

Low power consumption and operating supply range of 1.8 V to 5.5 V and dual ± 2.5 V make the ADG733 and ADG734 ideal for battery powered, portable instruments. All channels exhibit break-before-make switching action preventing momentary shorting when switching channels. An $\overline{\text{EN}}$ input on the ADG733 is used to enable or disable the device. When disabled, all channels are switched OFF.

These 2–1 multiplexers/SPDT switches are designed on an enhanced submicron process that provides low power dissipation yet gives high switching speed, very low on resistance, high signal bandwidths, and low leakage currents. On resistance is in the region of a few ohms, is closely matched between switches, and is very flat over the full signal range. These parts can operate equally well in either direction and have an input signal range that extends to the supplies.

The ADG733 is available in small TSSOP and QSOP packages, while the ADG734 is available in a small TSSOP package.

REV. A

Information furnished by Analog Devices is believed to be accurate and reliable. However, no responsibility is assumed by Analog Devices for its use, nor for any infringements of patents or other rights of third parties that may result from its use. No license is granted by implication or otherwise under any patent or patent rights of Analog Devices.

FUNCTIONAL BLOCK DIAGRAMS



SWITCHES SHOWN FOR A "1" INPUT LOGIC

PRODUCT HIGHLIGHTS

1. Single/Dual Supply Operation. The ADG733 and ADG734 are fully specified and guaranteed with 3 V and 5 V single supply rails and ± 2.5 V dual supply rails.
2. Low On Resistance (2.5 Ω typical)
3. Low Power Consumption ($< 0.01 \mu\text{W}$)
4. Guaranteed Break-Before-Make Switching Action

ADG733/ADG734—SPECIFICATIONS¹ ($V_{DD} = 5\text{ V} \pm 10\%$, $V_{SS} = 0\text{ V}$, $GND = 0\text{ V}$, unless otherwise noted.)

| Parameter | B Version | | Unit | Test Conditions/Comments |
|--|------------|-----------------|-------------------|--|
| | +25°C | -40°C to +85°C | | |
| ANALOG SWITCH | | | | |
| Analog Signal Range | | 0 V to V_{DD} | V | |
| On Resistance (R_{ON}) | 2.5 | | Ω typ | $V_S = 0\text{ V}$ to V_{DD} , $I_{DS} = 10\text{ mA}$; Test Circuit 1 |
| | 4.5 | 5.0 | Ω max | |
| On Resistance Match between Channels (ΔR_{ON}) | | 0.1 | Ω typ | $V_S = 0\text{ V}$ to V_{DD} , $I_{DS} = 10\text{ mA}$ |
| | | 0.4 | Ω max | |
| On Resistance Flatness ($R_{FLAT(ON)}$) | 0.5 | | Ω typ | $V_S = 0\text{ V}$ to V_{DD} , $I_{DS} = 10\text{ mA}$ |
| | | 1.2 | Ω max | |
| LEAKAGE CURRENTS | | | | |
| Source OFF Leakage I_S (OFF) | ± 0.01 | | nA typ | $V_{DD} = 5.5\text{ V}$ $V_D = 4.5\text{ V}/1\text{ V}$, $V_S = 1\text{ V}/4.5\text{ V}$; Test Circuit 2 |
| | ± 0.1 | ± 0.3 | nA max | |
| Channel ON Leakage I_D , I_S (ON) | ± 0.01 | | nA typ | $V_D = V_S = 1\text{ V}$, or 4.5 V ; Test Circuit 3 |
| | ± 0.1 | ± 0.5 | nA max | |
| DIGITAL INPUTS | | | | |
| Input High Voltage, V_{INH} | | 2.4 | V min | |
| Input Low Voltage, V_{INL} | | 0.8 | V max | |
| Input Current | | | | |
| I_{INL} or I_{INH} | 0.005 | | μA typ | $V_{IN} = V_{INL}$ or V_{INH} |
| | | ± 0.1 | μA max | |
| C_{IN} , Digital Input Capacitance | 4 | | pF typ | |
| DYNAMIC CHARACTERISTICS² | | | | |
| t_{ON} | 19 | | ns typ | $R_L = 300\ \Omega$, $C_L = 35\text{ pF}$; $V_S = 3\text{ V}$, Test Circuit 4 |
| | | 34 | ns max | |
| t_{OFF} | 7 | | ns typ | $R_L = 300\ \Omega$, $C_L = 35\text{ pF}$; $V_S = 3\text{ V}$, Test Circuit 4 |
| | | 12 | ns max | |
| ADG733 $t_{ON}(\overline{EN})$ | 20 | | ns typ | $R_L = 300\ \Omega$, $C_L = 35\text{ pF}$; $V_S = 3\text{ V}$, Test Circuit 5 |
| | | 40 | ns max | |
| $t_{OFF}(\overline{EN})$ | 7 | | ns typ | $R_L = 300\ \Omega$, $C_L = 35\text{ pF}$; $V_S = 3\text{ V}$, Test Circuit 5 |
| | | 12 | ns max | |
| Break-Before-Make Time Delay, t_D | 13 | | ns typ | $R_L = 300\ \Omega$, $C_L = 35\text{ pF}$; $V_S = 3\text{ V}$, Test Circuit 6 |
| | | 1 | ns min | |
| Charge Injection | ± 3 | | pC typ | $V_S = 2\text{ V}$, $R_S = 0\ \Omega$, $C_L = 1\text{ nF}$; Test Circuit 7 |
| Off Isolation | -72 | | dB typ | $R_L = 50\ \Omega$, $C_L = 5\text{ pF}$, $f = 1\text{ MHz}$; Test Circuit 8 |
| Channel-to-Channel Crosstalk | -67 | | dB typ | $R_L = 50\ \Omega$, $C_L = 5\text{ pF}$, $f = 1\text{ MHz}$; Test Circuit 9 |
| -3 dB Bandwidth | 160 | | MHz typ | $R_L = 50\ \Omega$, $C_L = 5\text{ pF}$, Test Circuit 10 |
| C_S (OFF) | 11 | | pF typ | $f = 1\text{ MHz}$ |
| C_D , C_S (ON) | 34 | | pF typ | $f = 1\text{ MHz}$ |
| POWER REQUIREMENTS | | | | |
| I_{DD} | 0.001 | | μA typ | $V_{DD} = 5.5\text{ V}$ Digital Inputs = 0 V or 5.5 V |
| | | 1.0 | μA max | |

NOTES

¹Temperature range is as follows: B Version: -40°C to +85°C.

²Guaranteed by design, not subject to production test.

Specifications subject to change without notice.

SPECIFICATIONS¹ ($V_{DD} = 3\text{ V} \pm 10\%$, $V_{SS} = 0\text{ V}$, $GND = 0\text{ V}$, unless otherwise noted.)

| Parameter | B Version | | Unit | Test Conditions/Comments |
|--|------------|-----------------|-------------------|--|
| | +25°C | -40°C to +85°C | | |
| ANALOG SWITCH | | | | |
| Analog Signal Range | | 0 V to V_{DD} | V | |
| On Resistance (R_{ON}) | 6 | | Ω typ | $V_S = 0\text{ V}$ to V_{DD} , $I_{DS} = 10\text{ mA}$; Test Circuit 1 |
| | 11 | 12 | Ω max | |
| On Resistance Match between Channels (ΔR_{ON}) | | 0.1 | Ω typ | $V_S = 0\text{ V}$ to V_{DD} , $I_{DS} = 10\text{ mA}$ |
| On Resistance Flatness ($R_{FLAT(ON)}$) | | 0.4 | Ω max | |
| | | 3 | Ω typ | $V_S = 0\text{ V}$ to V_{DD} , $I_{DS} = 10\text{ mA}$ |
| LEAKAGE CURRENTS | | | | |
| Source OFF Leakage I_S (OFF) | ± 0.01 | | nA typ | $V_{DD} = 3.3\text{ V}$ $V_S = 3\text{ V}/1\text{ V}$, $V_D = 1\text{ V}/3\text{ V}$; Test Circuit 2 |
| | ± 0.1 | ± 0.3 | nA max | |
| Channel ON Leakage I_D , I_S (ON) | ± 0.01 | | nA typ | $V_S = V_D = 1\text{ V}$ or 3 V ; Test Circuit 3 |
| | ± 0.1 | ± 0.5 | nA max | |
| DIGITAL INPUTS | | | | |
| Input High Voltage, V_{INH} | | 2.0 | V min | |
| Input Low Voltage, V_{INL} | | 0.8 | V max | |
| Input Current I_{INL} or I_{INH} | 0.005 | | μA typ | $V_{IN} = V_{INL}$ or V_{INH} |
| | | ± 0.1 | μA max | |
| C_{IN} , Digital Input Capacitance | 4 | | pF typ | |
| DYNAMIC CHARACTERISTICS² | | | | |
| t_{ON} | 28 | | ns typ | $R_L = 300\ \Omega$, $C_L = 35\text{ pF}$; $V_S = 2\text{ V}$, Test Circuit 4 |
| | | 55 | ns max | $R_L = 300\ \Omega$, $C_L = 35\text{ pF}$; $V_S = 2\text{ V}$, Test Circuit 4 |
| t_{OFF} | 9 | | ns typ | $R_L = 300\ \Omega$, $C_L = 35\text{ pF}$; $V_S = 2\text{ V}$, Test Circuit 4 |
| | | 16 | ns max | $R_L = 300\ \Omega$, $C_L = 35\text{ pF}$; $V_S = 2\text{ V}$, Test Circuit 5 |
| ADG733 $t_{ON}(\overline{EN})$ | 29 | | ns typ | $R_L = 300\ \Omega$, $C_L = 35\text{ pF}$; $V_S = 2\text{ V}$, Test Circuit 5 |
| | | 60 | ns max | $R_L = 300\ \Omega$, $C_L = 35\text{ pF}$; $V_S = 2\text{ V}$, Test Circuit 5 |
| $t_{OFF}(\overline{EN})$ | 9 | | ns typ | $R_L = 300\ \Omega$, $C_L = 35\text{ pF}$; $V_S = 2\text{ V}$, Test Circuit 5 |
| | | 16 | ns max | $R_L = 300\ \Omega$, $C_L = 35\text{ pF}$; $V_S = 2\text{ V}$, Test Circuit 5 |
| Break-Before-Make Time Delay, t_D | 22 | | ns typ | $R_L = 300\ \Omega$, $C_L = 35\text{ pF}$; $V_S = 2\text{ V}$, Test Circuit 6 |
| | | 1 | ns min | $V_S = 1\text{ V}$, $R_S = 0\ \Omega$, $C_L = 1\text{ nF}$; Test Circuit 7 |
| Charge Injection | ± 3 | | pC typ | $R_L = 50\ \Omega$, $C_L = 5\text{ pF}$, $f = 1\text{ MHz}$; Test Circuit 8 |
| Off Isolation | -72 | | dB typ | $R_L = 50\ \Omega$, $C_L = 5\text{ pF}$, $f = 1\text{ MHz}$; Test Circuit 9 |
| Channel-to-Channel Crosstalk | -67 | | dB typ | $R_L = 50\ \Omega$, $C_L = 5\text{ pF}$, $f = 1\text{ MHz}$; Test Circuit 10 |
| -3 dB Bandwidth | 160 | | MHz typ | $R_L = 50\ \Omega$, $C_L = 5\text{ pF}$, Test Circuit 10 |
| C_S (OFF) | 11 | | pF typ | $f = 1\text{ MHz}$ |
| C_D , C_S (ON) | 34 | | pF typ | $f = 1\text{ MHz}$ |
| POWER REQUIREMENTS | | | | |
| I_{DD} | 0.001 | | μA typ | $V_{DD} = 3.3\text{ V}$ Digital Inputs = 0 V or 3.3 V |
| | | 1.0 | μA max | |

NOTES

¹Temperature ranges are as follows: B Version: -40°C to +85°C.²Guaranteed by design, not subject to production test.

Specifications subject to change without notice.

ADG733/ADG734—SPECIFICATIONS¹

DUAL SUPPLY ($V_{DD} = +2.5\text{ V} \pm 10\%$, $V_{SS} = -2.5\text{ V} \pm 10\%$, $GND = 0\text{ V}$, unless otherwise noted.)

| Parameter | B Version | | Unit | Test Conditions/Comments |
|--|------------|----------------------|-------------------|--|
| | +25°C | -40°C to +85°C | | |
| ANALOG SWITCH | | | | |
| Analog Signal Range | | V_{SS} to V_{DD} | V | |
| On Resistance (R_{ON}) | 2.5 | | Ω typ | $V_S = V_{SS}$ to V_{DD} , $I_{DS} = 10\text{ mA}$; Test Circuit 1 |
| | 4.5 | 5.0 | Ω max | |
| On Resistance Match between Channels (ΔR_{ON}) | | 0.1 | Ω typ | $V_S = V_{SS}$ to V_{DD} , $I_{DS} = 10\text{ mA}$ |
| | | 0.4 | Ω max | |
| On Resistance Flatness ($R_{FLAT(ON)}$) | 0.5 | | Ω typ | $V_S = V_{SS}$ to V_{DD} , $I_{DS} = 10\text{ mA}$ |
| | | 1.2 | Ω max | |
| LEAKAGE CURRENTS | | | | |
| Source OFF Leakage I_S (OFF) | ± 0.01 | | nA typ | $V_{DD} = +2.75\text{ V}$, $V_{SS} = -2.75\text{ V}$ $V_S = +2.25\text{ V}/-1.25\text{ V}$, $V_D = -1.25\text{ V}/+2.25\text{ V}$; Test Circuit 2 |
| | ± 0.1 | ± 0.3 | nA max | |
| Channel ON Leakage I_D , I_S (ON) | ± 0.01 | | nA typ | $V_S = V_D = +2.25\text{ V}/-1.25\text{ V}$, Test Circuit 3 |
| | ± 0.1 | ± 0.5 | nA max | |
| DIGITAL INPUTS | | | | |
| Input High Voltage, V_{INH} | | 1.7 | V min | |
| Input Low Voltage, V_{INL} | | 0.7 | V max | |
| Input Current | | | | |
| I_{INL} or I_{INH} | 0.005 | | μA typ | $V_{IN} = V_{INL}$ or V_{INH} |
| | | ± 0.1 | μA max | |
| C_{IN} , Digital Input Capacitance | 4 | | pF typ | |
| DYNAMIC CHARACTERISTICS² | | | | |
| t_{ON} | 21 | | ns typ | $R_L = 300\ \Omega$, $C_L = 35\text{ pF}$; $V_S = 1.5\text{ V}$, Test Circuit 4 |
| | | 35 | ns max | |
| t_{OFF} | 10 | | ns typ | $R_L = 300\ \Omega$, $C_L = 35\text{ pF}$; $V_S = 1.5\text{ V}$, Test Circuit 4 |
| | | 16 | ns max | |
| ADG733 $t_{ON}(\overline{EN})$ | 21 | | ns typ | $R_L = 300\ \Omega$, $C_L = 35\text{ pF}$; $V_S = 1.5\text{ V}$, Test Circuit 5 |
| | | 40 | ns max | |
| $t_{OFF}(\overline{EN})$ | 10 | | ns typ | $R_L = 300\ \Omega$, $C_L = 35\text{ pF}$; $V_S = 1.5\text{ V}$, Test Circuit 5 |
| | | 16 | ns max | |
| Break-Before-Make Time Delay, t_D | 13 | | ns typ | $R_L = 300\ \Omega$, $C_L = 35\text{ pF}$; $V_S = 1.5\text{ V}$, Test Circuit 6 |
| | | 1 | ns min | |
| Charge Injection | ± 5 | | pC typ | $V_S = 0\text{ V}$, $R_S = 0\ \Omega$, $C_L = 1\text{ nF}$; Test Circuit 7 |
| Off Isolation | -72 | | dB typ | $R_L = 50\ \Omega$, $C_L = 5\text{ pF}$, $f = 1\text{ MHz}$; Test Circuit 8 |
| Channel-to-Channel Crosstalk | -67 | | dB typ | $R_L = 50\ \Omega$, $C_L = 5\text{ pF}$, $f = 1\text{ MHz}$; Test Circuit 9 |
| -3 dB Bandwidth | 200 | | MHz typ | $R_L = 50\ \Omega$, $C_L = 5\text{ pF}$, Test Circuit 10 |
| C_S (OFF) | 11 | | pF typ | $f = 1\text{ MHz}$ |
| C_D , C_S (ON) | 34 | | pF typ | $f = 1\text{ MHz}$ |
| POWER REQUIREMENTS | | | | |
| I_{DD} | 0.001 | | μA typ | $V_{DD} = 2.75\text{ V}$ Digital Inputs = 0 V or 2.75 V |
| | | 1.0 | μA max | |
| I_{SS} | 0.001 | | μA typ | $V_{SS} = -2.75\text{ V}$ Digital Inputs = 0 V or 2.75 V |
| | | 1.0 | μA max | |

NOTES

¹Temperature range is as follows: B Version: -40°C to +85°C.

²Guaranteed by design, not subject to production test.

Specifications subject to change without notice.

ABSOLUTE MAXIMUM RATINGS¹

(T_A = 25°C, unless otherwise noted.)

| | |
|------------------------------------|--|
| V _{DD} to V _{SS} | 7 V |
| V _{DD} to GND | -0.3 V to +7 V |
| V _{SS} to GND | +0.3 V to -3.5 V |
| Analog Inputs ² | V _{SS} - 0.3 V to V _{DD} + 0.3 V or 30 mA, Whichever Occurs First |
| Digital Inputs ² | -0.3 V to V _{DD} + 0.3 V or 30 mA, Whichever Occurs First |
| Peak Current, S or D | 100 mA (Pulsed at 1 ms, 10% Duty Cycle max) |
| Continuous Current, S or D | 30 mA |
| Operating Temperature Range | |
| Industrial (A, B Versions) | -40°C to +85°C |
| Storage Temperature Range | -65°C to +150°C |

| | |
|--|------------|
| Junction Temperature | 150°C |
| 16-Lead TSSOP, θ _{JA} Thermal Impedance | 150.4°C/W |
| 20-Lead TSSOP, θ _{JA} Thermal Impedance | 143°C/W |
| 16-Lead QSOP, θ _{JA} Thermal Impedance | 149.97°C/W |
| Lead Temperature, Soldering (10 sec) | 300°C |
| IR Reflow, Peak Temperature (<20 sec) | 235°C |

NOTES

¹ Stresses above those listed under Absolute Maximum Ratings may cause permanent damage to the device. This is a stress rating only; functional operation of the device at these or any other conditions above those listed in the operational sections of this specification is not implied. Exposure to absolute maximum rating conditions for extended periods may affect device reliability. Only one absolute maximum rating may be applied at any one time.

² Overvoltages at A, EN, IN, S, or D will be clamped by internal diodes. Current should be limited to the maximum ratings given.

ORDERING GUIDE

| Model | Temperature Range | Package Description | Package Option |
|-----------|-------------------|---|----------------|
| ADG733BRU | -40°C to +85°C | Thin Shrink Small Outline Package (TSSOP) | RU-16 |
| ADG733BRQ | -40°C to +85°C | Quarter Size Outline Package (QSOP) | RQ-16 |
| ADG734BRU | -40°C to +85°C | Thin Shrink Small Outline Package (TSSOP) | RU-20 |

CAUTION

ESD (electrostatic discharge) sensitive device. Electrostatic charges as high as 4000 V readily accumulate on the human body and test equipment and can discharge without detection. Although the ADG733/ADG734 feature proprietary ESD protection circuitry, permanent damage may occur on devices subjected to high energy electrostatic discharges. Therefore, proper ESD precautions are recommended to avoid performance degradation or loss of functionality.



PIN CONFIGURATIONS



ADG733/ADG734

Table I. ADG733 Truth Table

| A2 | A1 | A0 | $\overline{\text{EN}}$ | ON Switch |
|----|----|----|------------------------|------------------------|
| X | X | X | 1 | None |
| 0 | 0 | 0 | 0 | D1-S1A, D2-S2A, D3-S3A |
| 0 | 0 | 1 | 0 | D1-S1B, D2-S2A, D3-S3A |
| 0 | 1 | 0 | 0 | D1-S1A, D2-S2B, D3-S3A |
| 0 | 1 | 1 | 0 | D1-S1B, D2-S2B, D3-S3A |
| 1 | 0 | 0 | 0 | D1-S1A, D2-S2A, D3-S3B |
| 1 | 0 | 1 | 0 | D1-S1B, D2-S2A, D3-S3B |
| 1 | 1 | 0 | 0 | D1-S1A, D2-S2B, D3-S3B |
| 1 | 1 | 1 | 0 | D1-S1B, D2-S2B, D3-S3B |

X = Don't Care.

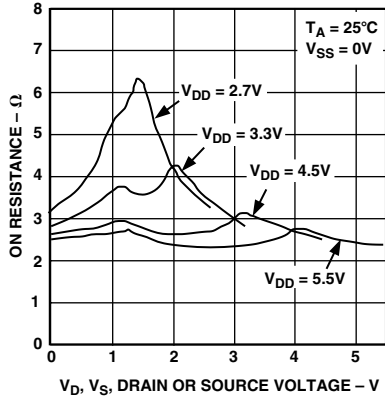
Table II. ADG734 Truth Table

| Logic | Switch A | Switch B |
|-------|----------|----------|
| 0 | OFF | ON |
| 1 | ON | OFF |

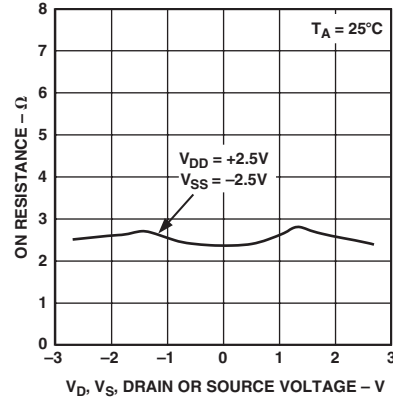
TERMINOLOGY

| | |
|---------------------------------|--|
| V_{DD} | Most Positive Power Supply Potential |
| V_{SS} | Most Negative Power Supply in a Dual Supply Application. In single supply applications, this should be tied to ground close to the device. |
| I_{DD} | Positive Supply Current |
| I_{SS} | Negative Supply Current |
| GND | Ground (0 V) Reference |
| S | Source Terminal. May be an input or output. |
| D | Drain Terminal. May be an input or output. |
| A_X | Logic Control Input |
| $\overline{\text{EN}}$ | Active low device enable |
| $V_D (V_S)$ | Analog Voltage on Terminals D and S |
| R_{ON} | Ohmic Resistance between D and S |
| ΔR_{ON} | On Resistance Match between any Two Channels (i.e., R_{ONmax} and R_{ONmin}) |
| $R_{FLAT(ON)}$ | Flatness is defined as the difference between the maximum and minimum value of on resistance as measured over the specified analog signal range. |
| I_S (OFF) | Source Leakage Current with the Switch "OFF" |
| I_D, I_S (ON) | Channel Leakage Current with the Switch "ON" |
| V_{INL} | Maximum Input Voltage for Logic "0" |
| V_{INH} | Minimum Input Voltage for Logic "1" |
| $I_{INL}(I_{INH})$ | Input Current of the Digital Input |
| C_S (OFF) | "OFF" Switch Source Capacitance. Measured with reference to ground. |
| $C_D, C_S(ON)$ | "ON" Switch Capacitance. Measured with reference to ground. |
| C_{IN} | Digital Input Capacitance |
| t_{ON} | Delay Time Measured between the 50% and 90% Points of the Digital Inputs and the Switch "ON" Condition |
| t_{OFF} | Delay Time Measured between the 50% and 90% Points of the Digital Input and the Switch "OFF" Condition |
| $t_{ON}(\overline{\text{EN}})$ | Delay Time between the 50% and 90% Points of the $\overline{\text{EN}}$ Digital Input and the Switch "ON" Condition |
| $t_{OFF}(\overline{\text{EN}})$ | Delay Time between the 50% and 90% Points of the $\overline{\text{EN}}$ Digital Input and the Switch "OFF" Condition |
| t_{OPEN} | "OFF" Time Measured between the 80% Points of Both Switches when Switching from One Address State to Another |
| Charge | A Measure of the Glitch Impulse Transferred Injection from the Digital Input to the Analog Output during Switching |
| Off Isolation | A Measure of Unwanted Signal Coupling through an "OFF" Switch. |
| Crosstalk | A Measure of Unwanted Signal that Is Coupled through from One Channel to Another as a Result of Parasitic Capacitance |
| On Response | The Frequency Response of the "ON" Switch |
| Insertion Loss | The Loss Due to the On Resistance of the switch |

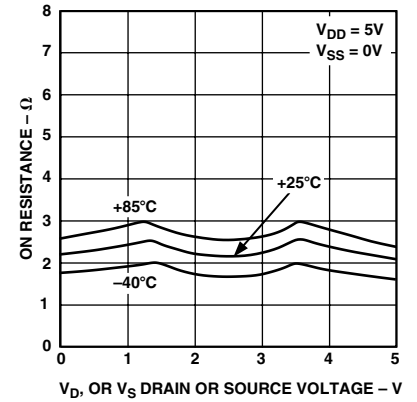
Typical Performance Characteristics—ADG733/ADG734



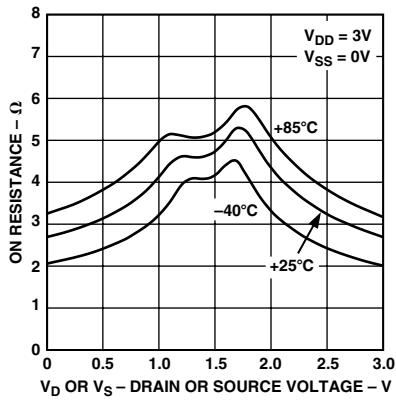
TPC 1. On Resistance as a Function of V_D (V_S) for Single Supply



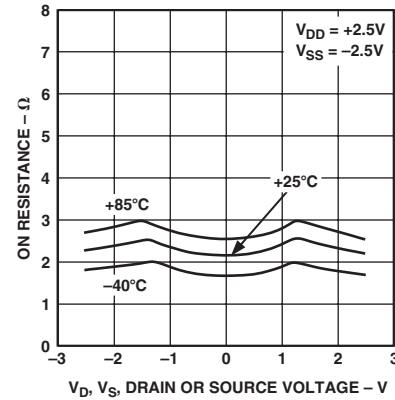
TPC 2. On Resistance as a Function of V_D (V_S) for Dual Supply



TPC 3. On Resistance as a Function of V_D (V_S) for Different Temperatures, Single Supply



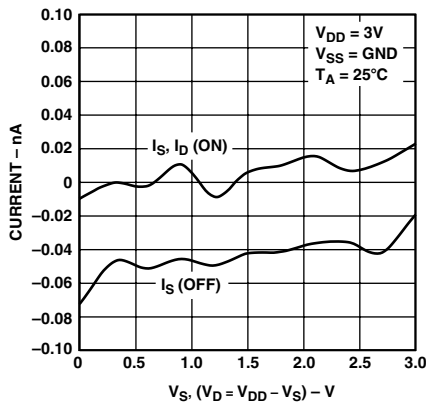
TPC 4. On Resistance as a Function of V_D (V_S) for Different Temperatures, Single Supply



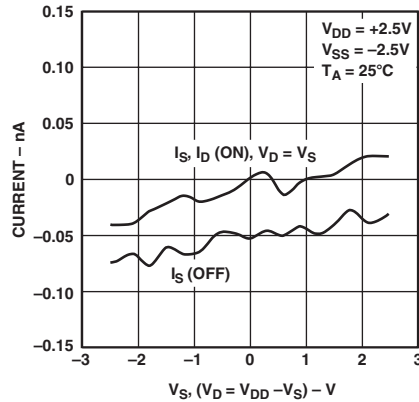
TPC 5. On Resistance as a Function of V_D (V_S) for Different Temperatures, Dual Supply



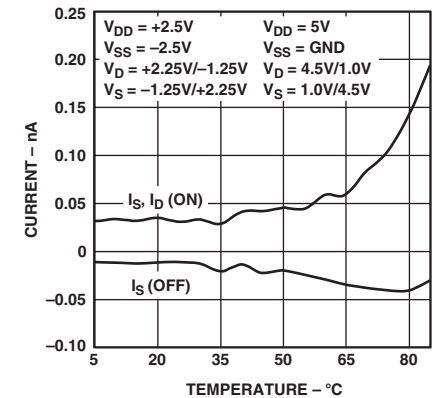
TPC 6. Leakage Currents as a Function of V_D (V_S)



TPC 7. Leakage Currents as a Function of V_D (V_S)



TPC 8. Leakage Currents as a Function of V_D (V_S)



TPC 9. Leakage Currents as a Function of Temperature

ADG733/ADG734



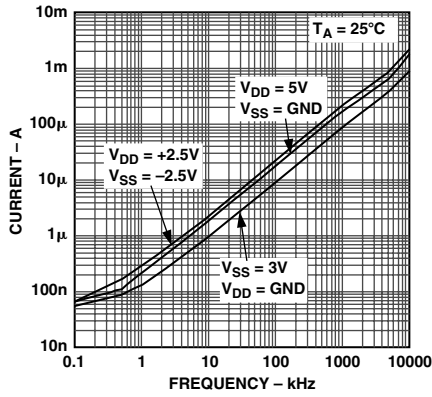
TPC 10. Leakage Currents as a Function of Temperature



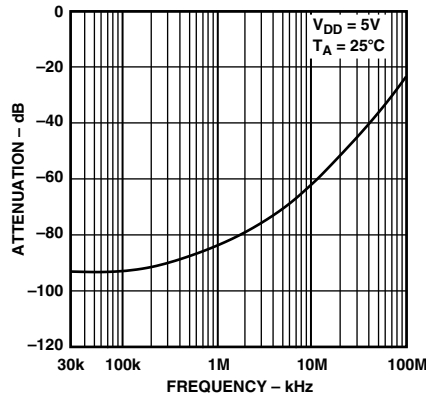
TPC 11. t_{ON}/t_{OFF} Times vs. Temperature



TPC 12. On Response vs. Frequency



TPC 13. Input Current, I_{DD} vs. Switching Frequency



TPC 14. Off Isolation vs. Frequency

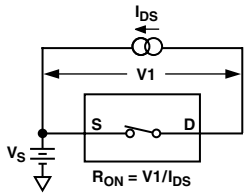


TPC 15. Crosstalk vs. Frequency

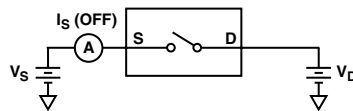


TPC 16. Charge Injection vs. Source Voltage

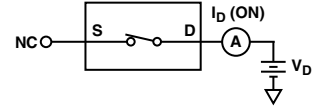
Test Circuits



Test Circuit 1. On Resistance



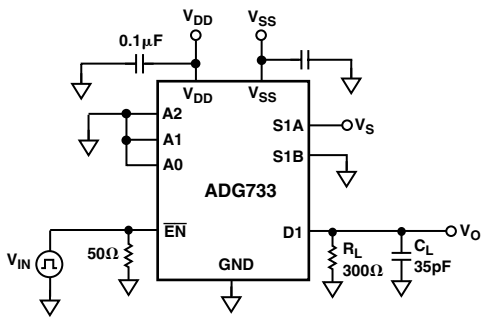
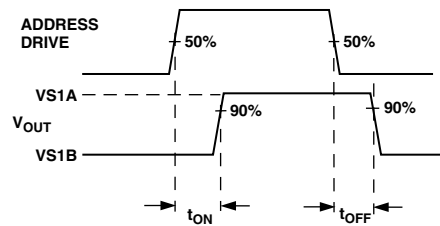
Test Circuit 2. I_S (OFF)



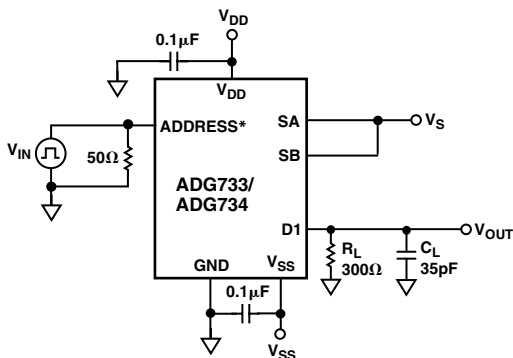
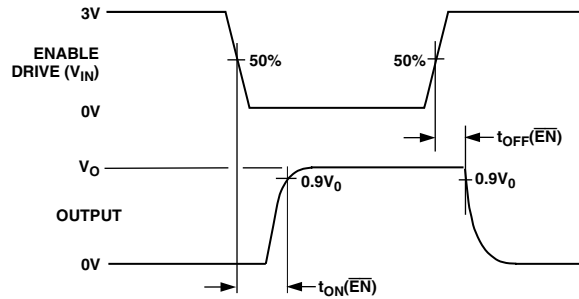
Test Circuit 3. I_D (ON)



Test Circuit 4. Switching Times, t_{ON} , t_{OFF}

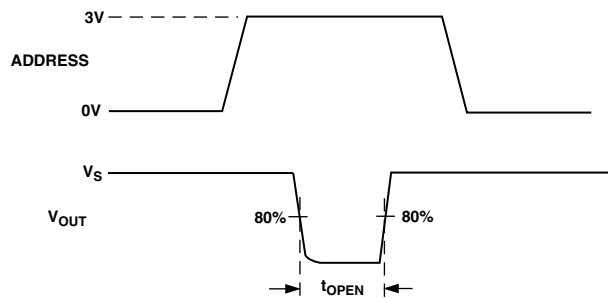


Test Circuit 5. Enable Delay, $t_{ON}(\overline{EN})$, $t_{OFF}(\overline{EN})$



*A0, A1, A2 FOR ADG733, IN1-4 FOR ADG734

Test Circuit 6. Break-Before-Make Delay, t_{OPEN}



ADG733/ADG734



* IN1-4 FOR ADG734

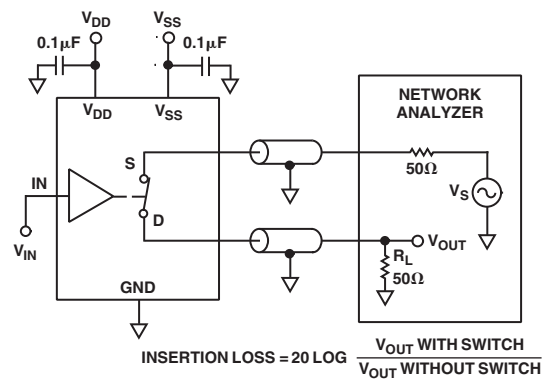


Test Circuit 7. Charge Injection



$$\text{OFF ISOLATION} = 20 \text{ LOG} \frac{V_{OUT}}{V_S}$$

Test Circuit 8. Off Isolation



$$\text{INSERTION LOSS} = 20 \text{ LOG} \frac{V_{OUT} \text{ WITH SWITCH}}{V_{OUT} \text{ WITHOUT SWITCH}}$$

Test Circuit 10. Bandwidth



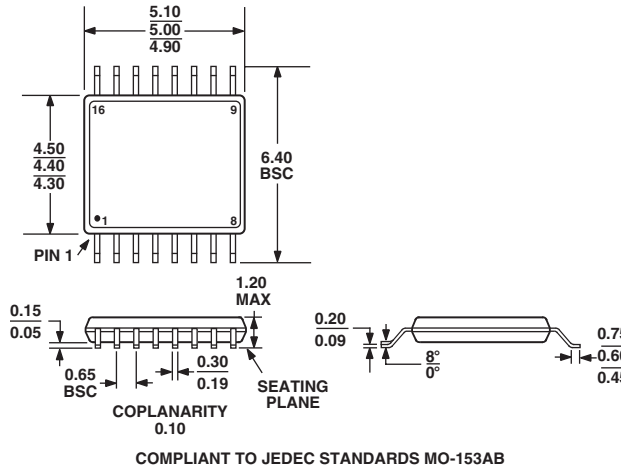
$$\text{CHANNEL-TO-CHANNEL CROSSTALK} = 20 \text{ LOG} \frac{V_{OUT}}{V_S}$$

Test Circuit 9. Channel-to-Channel Crosstalk

OUTLINE DIMENSIONS

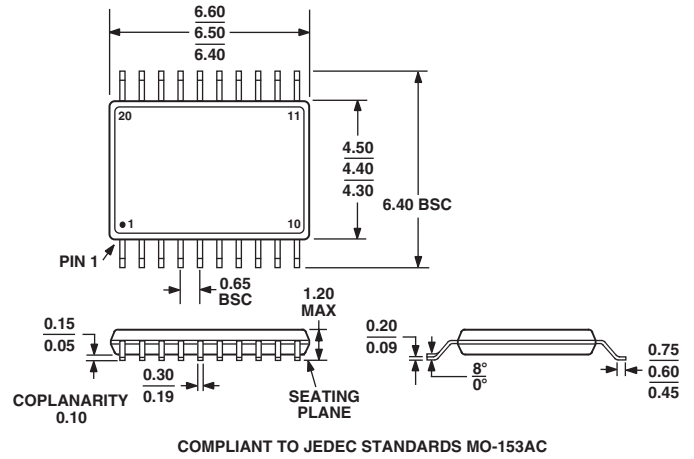
16-Lead Thin Shrink Small Outline Package [TSSOP]
(RU-16)

Dimensions shown in millimeters



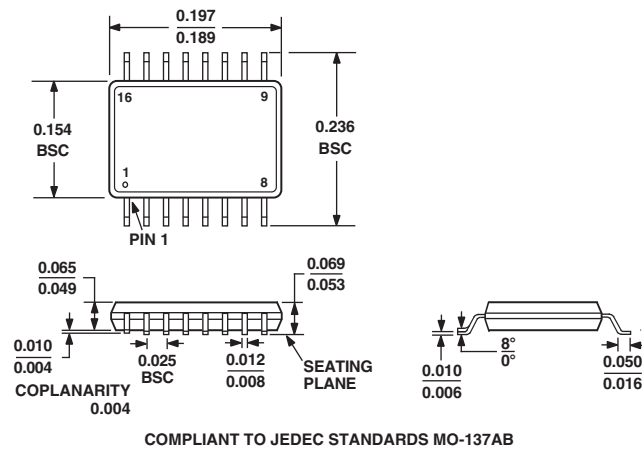
20-Lead Thin Shrink Small Outline Package [TSSOP]
(RU-20)

Dimensions shown in millimeters



16-Lead SOIC, 0.025 Lead Pitch [QSOP]
(RQ-16)

Dimensions shown in inches



ADG733/ADG734

Revision History

| Location | Page |
|--|-------------|
| 11/02—Data Sheet changed from REV. 0 to REV. A. | |
| Changes to FEATURES | 1 |
| Changes to PRODUCT HIGHLIGHTS | 1 |
| Changes to SPECIFICATIONS | 2 |
| Changes to ABSOLUTE MAXIMUM RATINGS Note 2 | 5 |
| Changes to TERMINOLOGY table | 6 |
| Replaced TPCs 2, 5, 8, and 9 | 7 |
| Edits to TPCs 6 and 7 | 7 |
| Replaced TPC 12 | 8 |
| Edits to TPCs 13 and 16 | 8 |
| Replaced Test Circuits 8 and 9 | 10 |
| Added Test Circuit 10 | 10 |
| Updated OUTLINE DIMENSIONS | 11 |

C01602-0-11/02(A)

PRINTED IN U.S.A.

Компания «Океан Электроники» предлагает заключение долгосрочных отношений при поставках импортных электронных компонентов на взаимовыгодных условиях!

Наши преимущества:

- Поставка оригинальных импортных электронных компонентов напрямую с производств Америки, Европы и Азии, а так же с крупнейших складов мира;
- Широкая линейка поставок активных и пассивных импортных электронных компонентов (более 30 млн. наименований);
- Поставка сложных, дефицитных, либо снятых с производства позиций;
- Оперативные сроки поставки под заказ (от 5 рабочих дней);
- Экспресс доставка в любую точку России;
- Помощь Конструкторского Отдела и консультации квалифицированных инженеров;
- Техническая поддержка проекта, помощь в подборе аналогов, поставка прототипов;
- Поставка электронных компонентов под контролем ВП;
- Система менеджмента качества сертифицирована по Международному стандарту ISO 9001;
- При необходимости вся продукция военного и аэрокосмического назначения проходит испытания и сертификацию в лаборатории (по согласованию с заказчиком);
- Поставка специализированных компонентов военного и аэрокосмического уровня качества (Xilinx, Altera, Analog Devices, Intersil, Interpoint, Microsemi, Actel, Aeroflex, Peregrine, VPT, Syfer, Eurofarad, Texas Instruments, MS Kennedy, Miteq, Cobham, E2V, MA-COM, Hittite, Mini-Circuits, General Dynamics и др.);

Компания «Океан Электроники» является официальным дистрибьютором и эксклюзивным представителем в России одного из крупнейших производителей разъемов военного и аэрокосмического назначения «JONHON», а так же официальным дистрибьютором и эксклюзивным представителем в России производителя высокотехнологичных и надежных решений для передачи СВЧ сигналов «FORSTAR».



JONHON

«JONHON» (основан в 1970 г.)

Разъемы специального, военного и аэрокосмического назначения:

(Применяются в военной, авиационной, аэрокосмической, морской, железнодорожной, горно- и нефтедобывающей отраслях промышленности)

«FORSTAR» (основан в 1998 г.)

ВЧ соединители, коаксиальные кабели,
кабельные сборки и микроволновые компоненты:

(Применяются в телекоммуникациях гражданского и специального назначения, в средствах связи, РЛС, а так же военной, авиационной и аэрокосмической отраслях промышленности).



Телефон: 8 (812) 309-75-97 (многоканальный)

Факс: 8 (812) 320-03-32

Электронная почта: ocean@oceanchips.ru

Web: <http://oceanchips.ru/>

Адрес: 198099, г. Санкт-Петербург, ул. Калинина, д. 2, корп. 4, лит. А