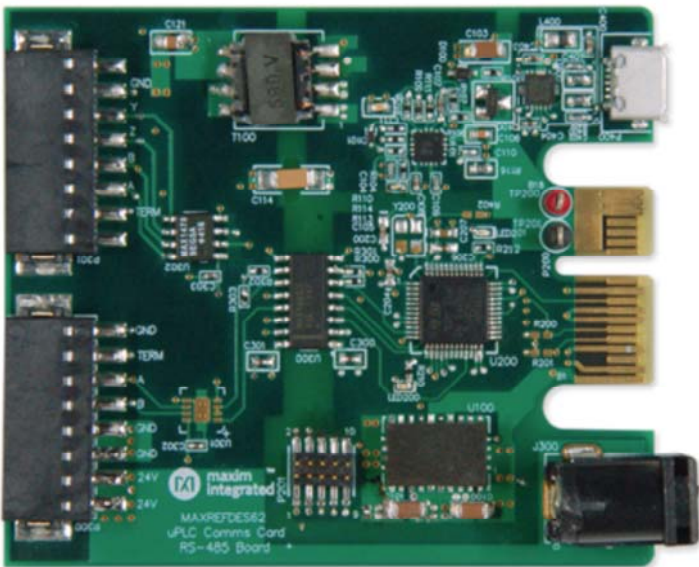


System Board 5984

## MAXREFDES62#: RS-485 COMMUNICATIONS MICRO PLC CARD

### DETAILS

MAXREFDES62# System Board



Enlarge+

### Introduction

Industry 4.0<sup>1</sup> marks the fourth industrial revolution, characterized by distributed, intelligent control systems. Breaking from a past with large, centralized programmable-logic controllers, Industry 4.0 allows for highly configurable, highly modular factories that accept an ever-increasing number of sensor inputs and operate at a higher output than before. The ultra-small PLC, or Micro PLC, lies at the heart of the Industry 4.0 factory, providing high performance with ultra-low power consumption, in an ultra-small package. The MAXREFDES62# is Maxim's micro PLC RS-485 communications card.

The MAXREFDES62# features two RS-485 transceivers (one full duplex and one half duplex) with isolated power and data. Each driver output has a selectable 120Ω termination resistor. The MAXREFDES62# design integrates one half-duplex RS-485 transceiver (MAX14783E); one full-duplex RS-485 transceiver (MAX14789E); 600V<sub>RMS</sub> data isolation (MAX14850); a STM32F1 microcontroller; a FTDI USB-UART bridge; and isolated/regulated +3.3V power rails (MAX17498C/MAX17515). The entire system typically operates at less than 500mW and fits into a space roughly the size of a credit card. While targeted for industrial and micro PLC applications, the MAXREFDES62# can be used in any application that requires high RS-485 data rates and ESD protection. A block diagram is shown in **Figure 1**.

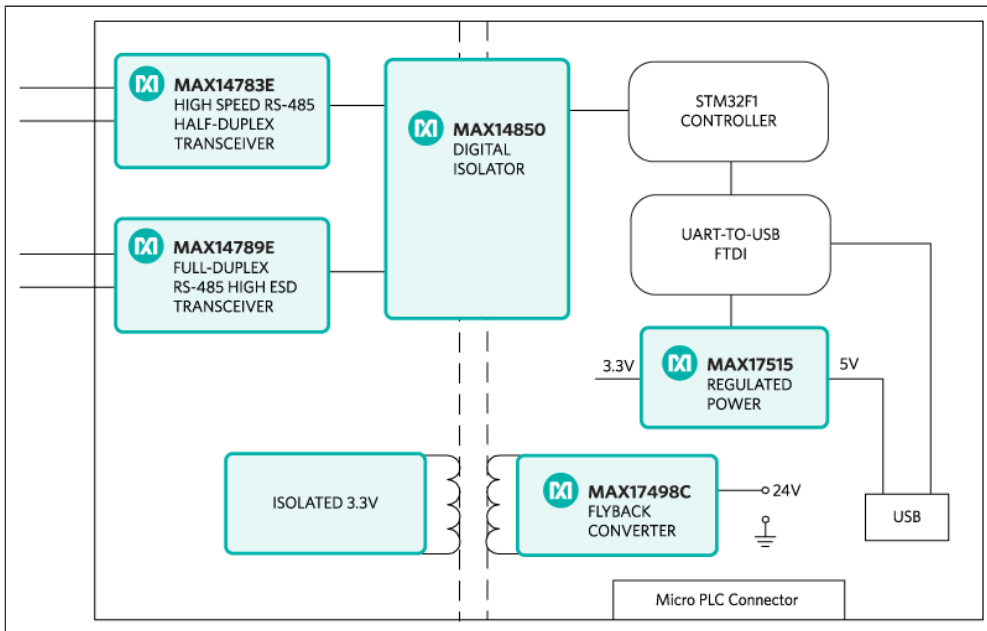


Figure 1. The MAXREFDES62# reference design block diagram.

## Features

- High-speed RS-485 communication
- Isolated power and data
- Micro PLC form factor
- Extended Protection with TVS on RS-485 Lines
- Device drivers
- Example C source code
- Test data

## Applications

- Industrial control and automation
- Process control
- PLC

## Detailed Description of Hardware

The power requirement is shown in **Table 1**.

Table 1. Power Requirement for the MAXREFDES62# Reference Design

Power Type	Input Voltage (V)	Input Current (mA, typ)
On-board isolated power	24	20

**Note:** STM32F1 and FTDI are powered by USB separately.

The MAXREFDES62# uses the ultra-efficient MAX17498C (U101) to generate the isolated +3.3V that powers the RS-485 transceivers from a 24V supply. This circuit is designed to maintain at least 3.0V of isolated power if one of the RS-485 drivers becomes shorted.

The MAX14850 (U300) digital data isolator provides data isolation between the STM32F1 microcontroller and the MAX14783E and MAX14789E transceivers. The combined power and data isolation achieved is 600V<sub>RMS</sub>.

The MAXREFDES62# uses the ultra-efficient MAX17498C (U501) to generate the isolated +17.5V, +7.5V, and -5V rails from a 24V supply. The MAX8719 (U102), MAX1659 (U103), and MAX1735 (U104) provide post-regulated +15V, +5.5V, and -3V rails. The MAX14850 (U301) digital data isolators provide data isolation. The combined power and data isolation achieved is 600V<sub>RMS</sub>.

The MAX17515 (U100) step-down DC-DC converter converts the +5V supply from the USB to +3.3V and powers the STMicroelectronics STM32F1 (U200) microcontroller and FTDI (U400) USB-UART bridge.

### Detailed Description of Firmware

The MAXREFDES62# uses the on-board STM32F103 microcontroller to communicate with the RS-485 transceivers. The user transmits and receives data through the RS-485 transceivers using a terminal program. The simple process flow is shown in **Figure 2**. The firmware is written in C using the Keil®  $\mu$ Vision5® tool.

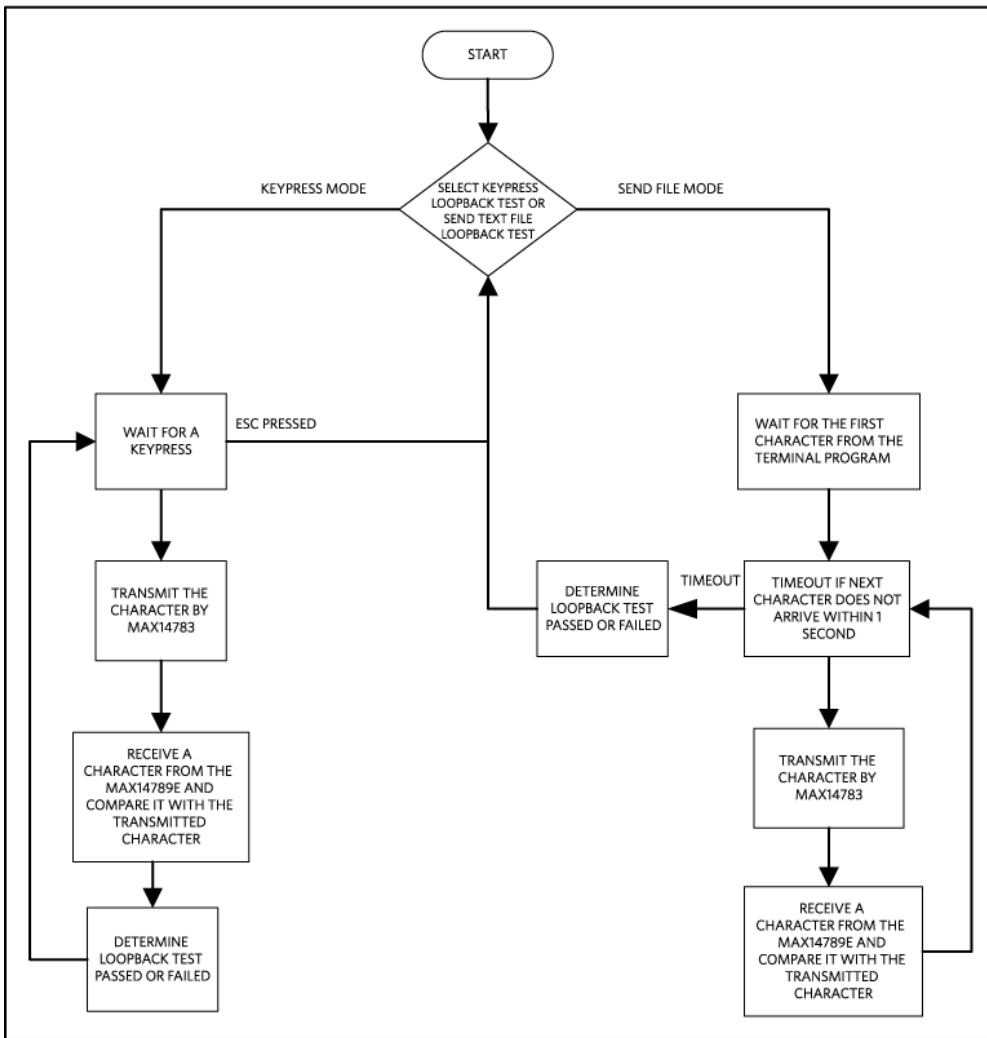


Figure 2. The MAXREFDES62# firmware flowchart.

The firmware accepts commands and transmits characters or text files through the MAX14783E. Connected in loopback, the transmitted data is received through the MAX14789E and compared to the original data that was sent. The complete source code is provided to speed up customer development. Code documentation can be found in the corresponding firmware platform files.

## Quick Start

Required equipment:

- Windows® PC with a USB port
- MAXREFDES62# board
- 24V power supply

## Procedure

The reference design is fully assembled and tested. Verify board operation using the following steps:

Always disconnect and reconnect the USB cable before using the terminal program.

1. Turn or keep off the 24V power supply.
2. The MAXREFDES62# utilizes the FTDI USB-UART bridge IC. If Windows cannot automatically install the driver for the FTDI USB-UART bridge IC, the driver is available for download from [www.ftdichip.com/Drivers/D2XX.htm](http://www.ftdichip.com/Drivers/D2XX.htm).
3. Connect the negative terminal of the 24V power supply to the PGND (TP201) connector on the MAXREFDES62# board. Connect the positive terminal of the 24V power supply to the +24V (TP200) connector on the MAXREFDES62# board.
4. Turn on the 24V power supply.
5. Connect the USB cable from the PC to the MAXREFDES62# board.
6. Open the hyperterminal or a similar terminal program on the PC. Find the appropriate COM port, usually a higher number port, such as COM4 or COM6, and configure the connection for 921600, n, 8, 1, none (flow control). The MAXREFDES62# software displays a menu (Figure 3).
7. For immediate signal testing, configure the RS-485 transceivers in loopback mode as follows: Use a wire to connect the A terminal of the P300 terminal block to the A terminal of the P301 terminal block. Use a wire to connect the B terminal of the P300 block to the B terminal of the P301 terminal block.
8. Press 0 in the terminal program to start the keypress loopback test.
9. Enter a character.
10. Verify that the character received is the same as the character sent.

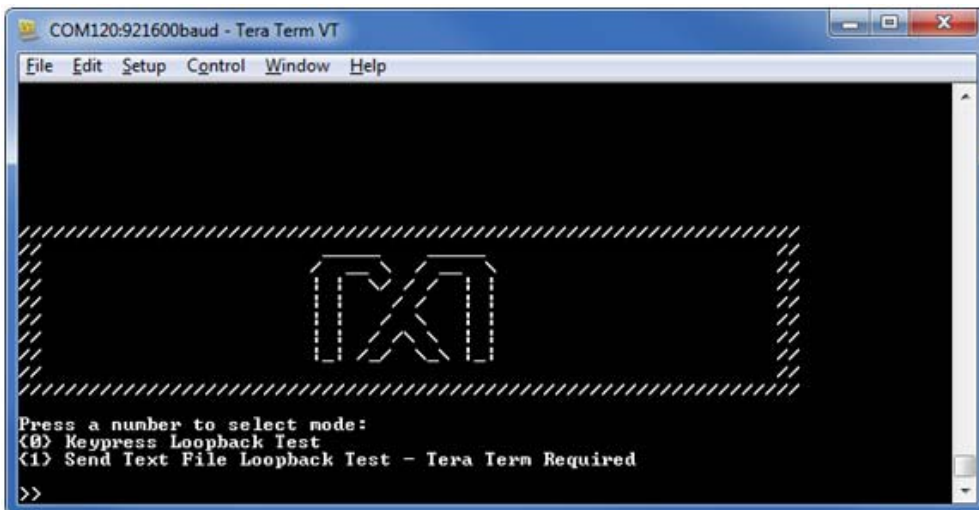


Figure 3. Terminal program main menu.

## Lab Measurements

Equipment used:

- Windows PC

- Oscilloscope
- MAXREFDES62# board
- +24V power supply

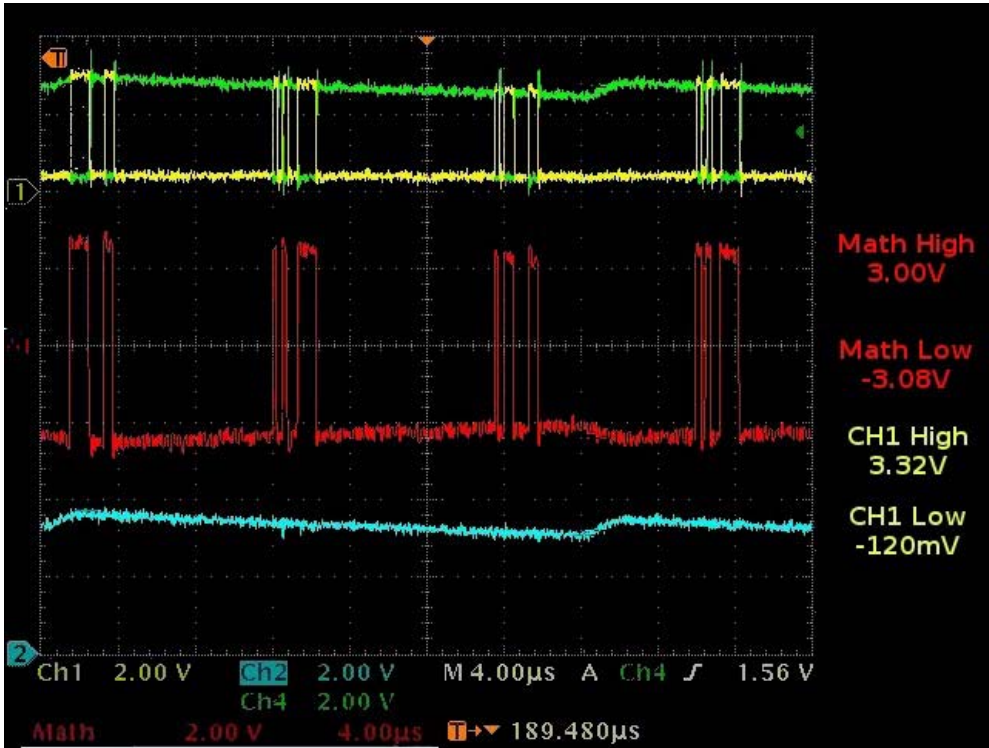


Figure 4. Loopback functionality (text file transfer), cable = 0m, termination enabled on both transceivers (CH1 = A, CH4 = B, MATH = A-B, CH2 =  $V_{ISO}$ ).

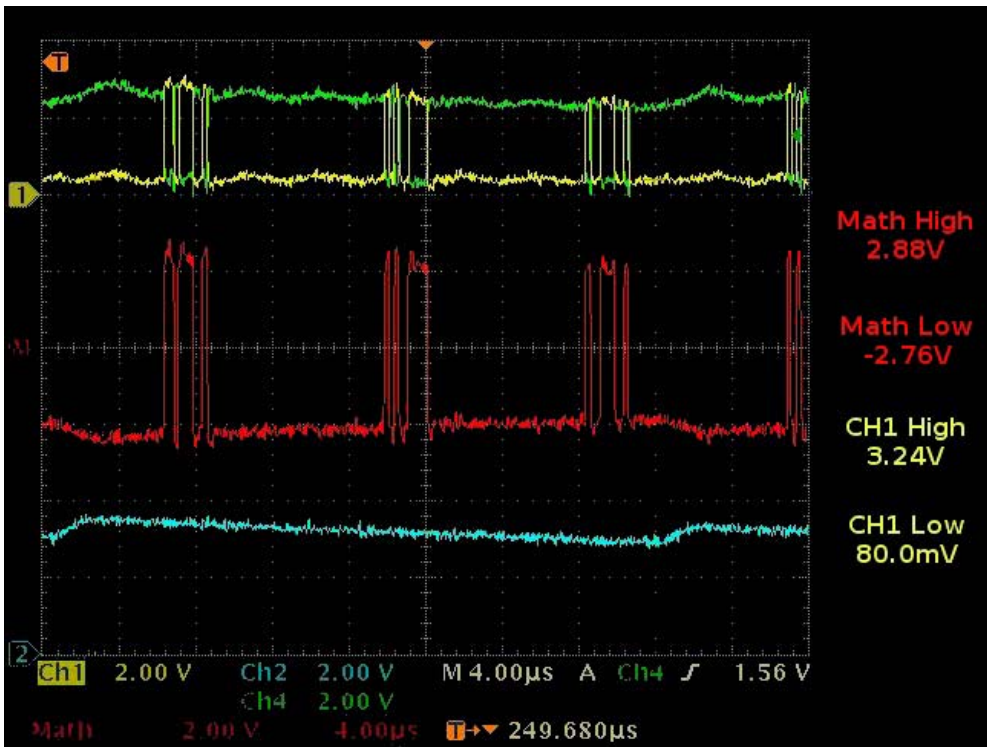


Figure 5. Loopback functionality (text file transfer), cable = 30m, Cat5e, termination enabled on both transceivers (CH1 = A, CH4 = B, MATH = A-B, CH2 =  $V_{ISO}$ ).

## Reference

1. The new generation of manufacturing production is called Industry 4.0 in Germany and Smart Manufacturing System elsewhere. See, **Securing the future of German manufacturing industry, Recommendations for implementing the strategic initiative INDUSTRIE 4.0, Final report of the Industrie 4.0 Working Group**, Industry 4.0 Working Group, Acatech National Academy of Science and Engineering, April 2013, [www.acatech.de/fileadmin/user\\_upload/Baumstruktur\\_nach\\_Website/Acatech/root/de/Material\\_fuer\\_Sonderseiten/Industrie\\_4.0/Final\\_report\\_\\_Industrie\\_4.0\\_accessible.pdf](http://www.acatech.de/fileadmin/user_upload/Baumstruktur_nach_Website/Acatech/root/de/Material_fuer_Sonderseiten/Industrie_4.0/Final_report__Industrie_4.0_accessible.pdf). Henceforth cited as **Industrie 4.0**. Although the Industrie 4.0 report is focused on Germany, the implications of the German research and findings are recognized for industry in other countries. See also Ferber, Stefan, "Industry 4.0 – Germany takes the first steps toward the next industrial revolution," Bosch Software Group, **Blogging the Internet of Things**, October 16, 2013, <http://blog.bosch-si.com/industry-4-0-germany-takes-first-steps-toward-the-next-industrial-revolution/>.

There are many sources for Smart Manufacturing Leadership. An interesting summary report of issues and topics can be found at the **Smart Manufacturing Leadership Coalition Committee Working**

**Meeting**, Minneapolis, MN, U.S., Thursday, October 20, 2011, <https://smart-process-manufacturing.ucla.edu/workshops/2011-workshop/presentations/SMLC%2010-20-11v3.pdf>. Also see, **Implementing 21st Century Smart Manufacturing, Workshop Summary Report**, Smart Manufacturing Leadership Coalition, June 24, 2011, [https://smart-process-manufacturing.ucla.edu/about/news/Smart%20Manufacturing%206\\_24\\_11.pdf](https://smart-process-manufacturing.ucla.edu/about/news/Smart%20Manufacturing%206_24_11.pdf). A simple web search on the topic will reveal considerably more references.

$\mu$ Vision is a registered trademark of ARM, Inc.

Keil is a registered trademark and registered service mark of ARM Limited.

Windows is a registered trademark and registered service mark of Microsoft Corporation.



Компания «Океан Электроники» предлагает заключение долгосрочных отношений при поставках импортных электронных компонентов на взаимовыгодных условиях!

Наши преимущества:

- Поставка оригинальных импортных электронных компонентов напрямую с производств Америки, Европы и Азии, а так же с крупнейших складов мира;
- Широкая линейка поставок активных и пассивных импортных электронных компонентов (более 30 млн. наименований);
- Поставка сложных, дефицитных, либо снятых с производства позиций;
- Оперативные сроки поставки под заказ (от 5 рабочих дней);
- Экспресс доставка в любую точку России;
- Помощь Конструкторского Отдела и консультации квалифицированных инженеров;
- Техническая поддержка проекта, помощь в подборе аналогов, поставка прототипов;
- Поставка электронных компонентов под контролем ВП;
- Система менеджмента качества сертифицирована по Международному стандарту ISO 9001;
- При необходимости вся продукция военного и аэрокосмического назначения проходит испытания и сертификацию в лаборатории (по согласованию с заказчиком);
- Поставка специализированных компонентов военного и аэрокосмического уровня качества (Xilinx, Altera, Analog Devices, Intersil, Interpoint, Microsemi, Actel, Aeroflex, Peregrine, VPT, Syfer, Eurofarad, Texas Instruments, MS Kennedy, Miteq, Cobham, E2V, MA-COM, Hittite, Mini-Circuits, General Dynamics и др.);

Компания «Океан Электроники» является официальным дистрибьютором и эксклюзивным представителем в России одного из крупнейших производителей разъемов военного и аэрокосмического назначения «JONHON», а так же официальным дистрибьютором и эксклюзивным представителем в России производителя высокотехнологичных и надежных решений для передачи СВЧ сигналов «FORSTAR».



## JONHON

«JONHON» (основан в 1970 г.)

Разъемы специального, военного и аэрокосмического назначения:

(Применяются в военной, авиационной, аэрокосмической, морской, железнодорожной, горно- и нефтедобывающей отраслях промышленности)

«FORSTAR» (основан в 1998 г.)

ВЧ соединители, коаксиальные кабели, кабельные сборки и микроволновые компоненты:

(Применяются в телекоммуникациях гражданского и специального назначения, в средствах связи, РЛС, а так же военной, авиационной и аэрокосмической отраслях промышленности).



Телефон: 8 (812) 309-75-97 (многоканальный)

Факс: 8 (812) 320-03-32

Электронная почта: [ocean@oceanchips.ru](mailto:ocean@oceanchips.ru)

Web: <http://oceanchips.ru/>

Адрес: 198099, г. Санкт-Петербург, ул. Калинина, д. 2, корп. 4, лит. А