

**HIGH-SIDE AND LOW-SIDE GATE DRIVERS IN SO-16 (TYPE TH)**
**Description**

The DGD2110 and DGD2113 are high-voltage / high-speed MOSFET and IGBT drivers with independent high-side and low-side outputs. The high-side driver features floating supply for operation at up to 500V/600V. The 10ns (max) / 20ns (max) propagation delay matching between the high and the low side drivers allows high-frequency operation.

The DGD2110 and DGD2113 logic inputs are compatible with standard CMOS levels (as low as 3.3V) while driver outputs feature high-pulse current buffers designed for minimum driver cross conduction.

The DGD2110 and DGD2113 are offered in a 16-pin SO (Type TH) package. They operate over an extended -40°C to +125°C temperature range.

**Features**

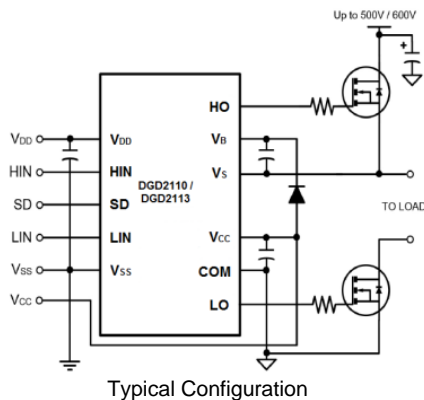
- Drives two N-Channel MOSFETs or IGBTs in high-side/low-side configuration
- Floating high-side operates to 600V
- 2.5A sink / 2.5A source typical output currents
- Outputs tolerant to negative transients
- Wide gate driver supply voltage range: 10V to 20V
- Wide logic input supply voltage range: 3.3V to 20V
- Wide logic supply offset voltage range: -5V to 5V
- 15ns (typ) rise / 13ns (typ) fall times with 1000pF load
- 105ns (typ) turn-on / 94ns (typ) turn-off delay times
- Cycle-by-cycle edge-triggered shutdown circuitry
- Extended temperature range: -40°C to +125°C
- **Totally Lead-Free & Fully RoHS Compliant (Notes 1 & 2)**
- **Halogen and Antimony free. "Green" Device (Note 3)**

**Applications**

- DC-DC Converters
- DC-AC Inverters
- AC-DC Power Supplies
- Motor Controls
- Class D Power Amplifiers

**Mechanical Data**

- Case: SO-16 (Type TH)
- Case Material: Molded Plastic. "Green" Molding Compound.
- UL Flammability Classification Rating 94V-0
- Moisture Sensitivity: Level 3 per J-STD-020
- Terminals: Finish – Matte Tin Plated Leads, Solderable per MIL-STD-202, Method 208 <sup>(E3)</sup>
- Weight: 0.130 grams (Approximate)

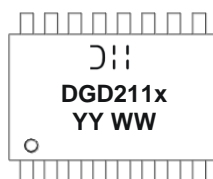


SO-16 (Type TH)  
Top View

**Ordering Information (Note 4)**

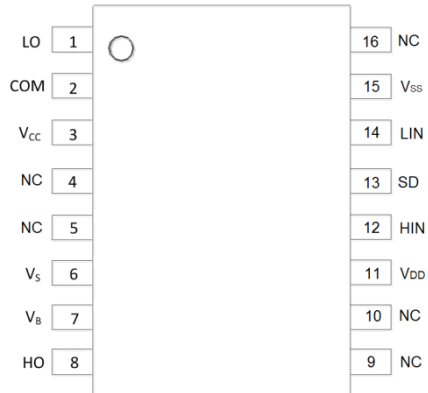
Product	Marking	Reel size (inches)	Tape width (mm)	Quantity per reel
DGD2110S16-13	DGD2110	13	16	1,500
DGD2113S16-13	DGD2113	13	16	1,500

- Notes:
1. No purposely added lead. Fully EU Directive 2002/95/EC (RoHS) & 2011/65/EU (RoHS 2) compliant.
  2. See [http://www.diodes.com/quality/lead\\_free.html](http://www.diodes.com/quality/lead_free.html) for more information about Diodes Incorporated's definitions of Halogen- and Antimony-free, "Green" and Lead-free.
  3. Halogen- and Antimony-free "Green" products are defined as those which contain <900ppm bromine, <900ppm chlorine (<1500ppm total Br + Cl) and <1000ppm antimony compounds.
  4. For packaging details, go to our website at <http://www.diodes.com/products/packages.html>.

**Marking Information**


- ⌋⌋ = Manufacturer's Marking
- DGD211x = Product Type Marking Code (See Table Above)
- YY = Year (ex: 16 = 2016)
- WW = Week (01 - 53)

**Pin Diagrams**

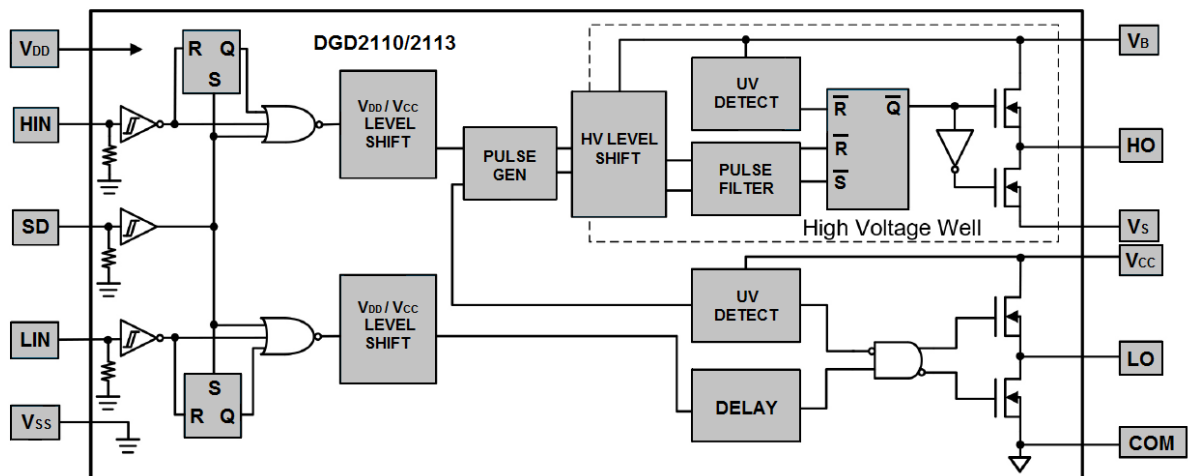


Top view: SO-16 (Type TH)

**Pin Descriptions**

Pin Number	Pin Name	Function
1	LO	Low-side gate driver output pin
2	COM	Low-side gate driver power supply return pin
3	V <sub>CC</sub>	Low-side gate driver power supply pin
4,5,9,10,16	NC	"No connect" pin (No Internal Connection)
6	V <sub>S</sub>	High-side gate driver floating power supply return pin
7	V <sub>B</sub>	High-side gate driver floating power supply pin
8	HO	High-side gate drive output pin
11	V <sub>DD</sub>	Logic power supply pin
12	HIN	Logic input pin for high-side gate driver output. HIN and HO are in phase
13	SD	Logic input shutdown pin
14	LIN	Logic input pin for low-side gate driver output. LIN and LO are in phase
15	V <sub>SS</sub>	Logic ground pin

**Functional Block Diagram**



**Absolute Maximum Ratings** (@T<sub>A</sub> = +25°C, unless otherwise specified.)

Characteristic	Symbol	Value	Unit
High-side floating supply voltage (DGD2110)	V <sub>B</sub>	-0.3 to +524	V
High-side floating supply voltage (DGD2113)	V <sub>B</sub>	-0.3 to +624	V
High-side floating supply offset voltage	V <sub>S</sub>	V <sub>B</sub> -24 to V <sub>B</sub> +0.3	V
High-side floating output voltage	V <sub>HO</sub>	V <sub>S</sub> -0.3 to V <sub>S</sub> +0.3	V
Offset supply voltage transient	dV <sub>S</sub> /dt	50	V/ns
Low-side fixed supply voltage	V <sub>CC</sub>	-0.3 to +24	V
Low-side output voltage	V <sub>LO</sub>	-0.3 to V <sub>CC</sub> +0.3	V
Logic supply voltage	V <sub>DD</sub>	-0.3 to V <sub>SS</sub> +24	V
Logic supply offset voltage	V <sub>SS</sub>	V <sub>CC</sub> -24 to V <sub>CC</sub> +0.3	V
Logic input voltage (HIN, LIN and SD)	V <sub>IN</sub>	V <sub>SS</sub> -0.3 to V <sub>DD</sub> +0.3	V

**Thermal Characteristics** (@T<sub>A</sub> = +25°C, unless otherwise specified.)

Characteristic	Symbol	Value	Unit
Power Dissipation Linear derating factor (Note 5)	P <sub>D</sub>	1.25	W
Thermal Resistance, Junction to Ambient (Note 5)	R <sub>θJA</sub>	90	°C/W
Thermal Resistance, Junction to Case (Note 5)	R <sub>θJC</sub>	45	°C/W
Operating Temperature	T <sub>J</sub>	+150	°C
Lead Temperature (soldering, 10 seconds)	T <sub>L</sub>	+300	
Storage Temperature Range	T <sub>STG</sub>	-55 to +150	

Note: 5. When mounted on a standard JEDEC 2-layer FR-4 board.

**Recommended Operating Conditions**

Parameter	Symbol	Min	Max	Unit
High-side floating supply absolute voltage	V <sub>B</sub>	V <sub>S</sub> + 10	V <sub>S</sub> + 20	V
High-side floating supply offset voltage	DGD2110 V <sub>S</sub>	(Note 6)	500	V
High-side floating supply offset voltage	DGD2113 V <sub>S</sub>	(Note 6)	600	V
High-side floating output voltage	V <sub>HO</sub>	V <sub>S</sub>	V <sub>B</sub>	V
Low-side fixed supply voltage	V <sub>CC</sub>	10	20	V
Low-side output voltage	V <sub>LO</sub>	0	V <sub>CC</sub>	V
Logic supply voltage	V <sub>DD</sub>	V <sub>SS</sub> + 3	V <sub>SS</sub> + 20	V
Logic supply offset voltage	V <sub>SS</sub>	-5 (Note 7)	5	V
Logic input voltage (HIN, LIN and SD)	V <sub>IN</sub>	V <sub>SS</sub>	V <sub>DD</sub>	V
Ambient temperature	T <sub>A</sub>	-40	+125	°C

Notes: 6. Logic operation for V<sub>S</sub> = -4V to +500V. Logic state held for V<sub>S</sub> = -4V to -V<sub>BS</sub>.

7. When V<sub>DD</sub> < 5V, the minimum V<sub>SS</sub> offset is limited to -V<sub>DD</sub>.

**DC Electrical Characteristics** ( $V_{BIAS} (V_{CC}, V_{BS}, V_{DD}) = 15V, V_{SS} = COM, @T_A = +25^\circ C$  unless otherwise specified.) (Note 8)

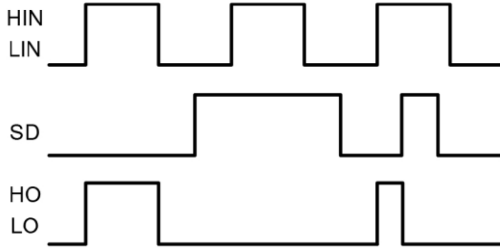
Parameter	Symbol	Min	Typ	Max	Unit	Conditions
Logic "1" input voltage	$V_{IH}$	9.5	–	–	V	–
Logic "0" input voltage	$V_{IL}$	–	–	6.0	V	–
High level output voltage, $V_{BIAS} - V_O$	$V_{OH}$	–	–	1.4	V	$I_O = 0mA$
Low level output voltage, $V_O$	$V_{OL}$	–	–	0.15	V	$I_O = 20mA$
Offset supply leakage current	$I_{LK}$	–	–	50	$\mu A$	$V_B = V_S = 500V/600V$
Quiescent $V_{BS}$ supply current	$I_{BSQ}$	–	55	230	$\mu A$	$V_{IN} = 0V$ or $V_{DD}$
Quiescent $V_{CC}$ supply current	$I_{CCQ}$	–	56	340	$\mu A$	$V_{IN} = 0V$ or $V_{DD}$
Quiescent $V_{DD}$ supply current	$I_{DDQ}$	–	0.6	30	$\mu A$	$V_{IN} = 0V$ or $V_{DD}$
Logic "1" input bias current	$I_{IN+}$	–	20	40	$\mu A$	$V_{IN} = V_{DD}$
Logic "0" input bias current	$I_{IN-}$	–	–	5.0	$\mu A$	$V_{IN} = 0V$
$V_{BS}$ supply undervoltage positive going threshold	$V_{BSUV+}$	7.5	8.6	9.7	V	–
$V_{BS}$ supply undervoltage negative going threshold	$V_{BSUV-}$	7.0	8.2	9.4	V	–
$V_{CC}$ supply undervoltage positive going threshold	$V_{CCUV+}$	7.4	8.5	9.6	V	–
$V_{CC}$ supply undervoltage negative going threshold	$V_{CCUV-}$	7.0	8.2	9.4	V	–
Output high short circuit pulsed current	$I_{O+}$	2.0	2.5	–	A	$V_O = 0V, V_{IN} = V_{DD}, PW \leq 10\mu s$
Output low short circuit pulsed current	$I_{O-}$	2.0	2.5	–	A	$V_O = 15V, V_{IN} = 0V, PW \leq 10\mu s$

Note: 8. The  $V_{IN}$  and  $I_{IN}$  parameters are referenced to  $V_{SS}$  and are applicable to all three logic input pins: HIN, LIN and SD. The  $V_O$  and  $I_O$  parameters are referenced to COM and are applicable to the respective output pins: HO and LO.

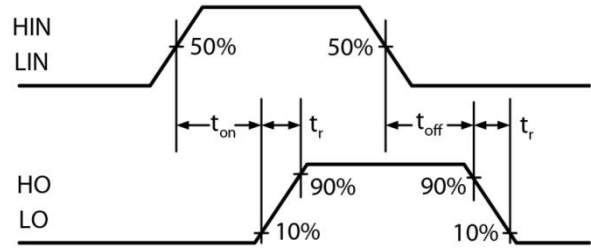
**AC Electrical Characteristics** ( $V_{BIAS} (V_{CC}, V_{BS}, V_{DD}) = 15V, C_L = 1000pF, V_{SS} = COM, @T_A = +25^\circ C$ , unless otherwise specified.)

Parameter	Symbol	Min	Typ	Max	Unit	Conditions	
Turn-on propagation delay	$t_{ON}$	–	105	150	ns	$V_S = 0V$	
Turn-off propagation delay	$t_{OFF}$	–	94	125	ns	$V_S = 500V/600V$	
Shut down propagation delay	$t_{SD}$	–	70	140	ns	$V_S = 500V/600V$	
Turn-on rise time	$t_r$	–	15	35	ns	–	
Turn-off fall time	$t_f$	–	13	25	ns	–	
Delay matching	DGD2110	$t_{DM}$	–	–	10	ns	–
Delay matching	DGD2113	$t_{DM}$	–	–	20	ns	–

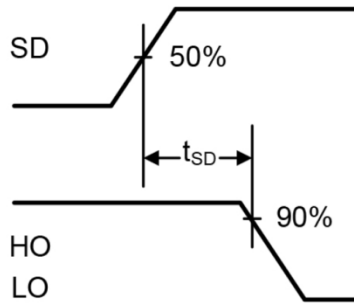
**Timing Waveforms**



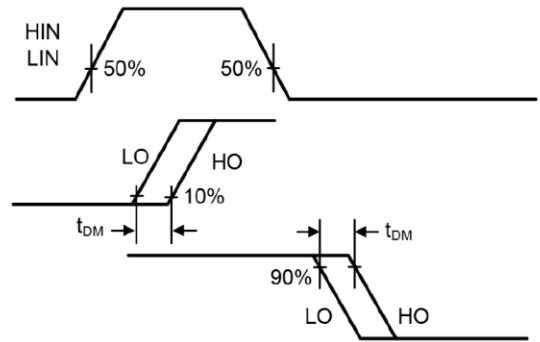
**Figure 1.** Input / Output Timing Diagram



**Figure 2.** Switching Time Waveform Definitions

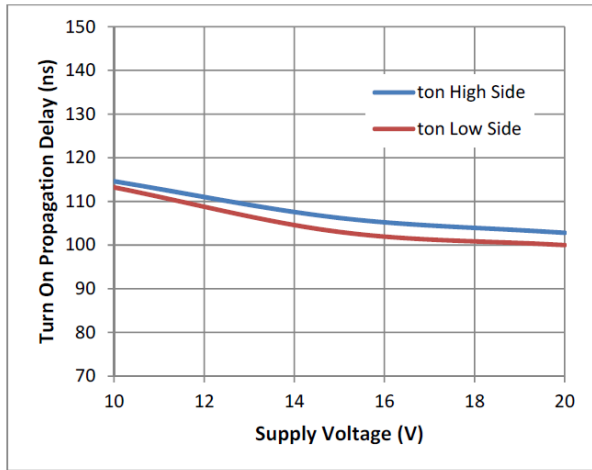


**Figure 3.** Shutdown Waveform Definitions

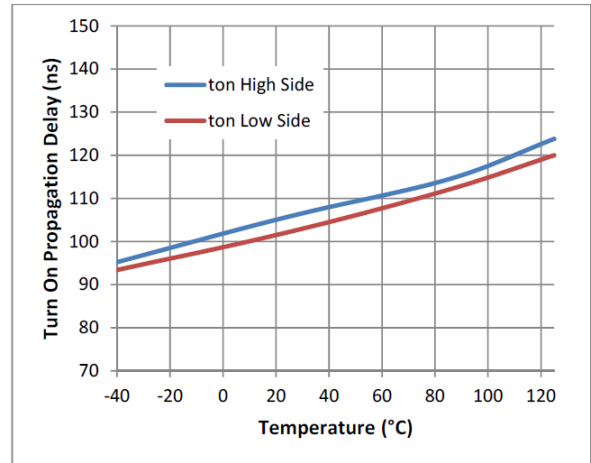


**Figure 4.** Delay Matching Waveform Definitions

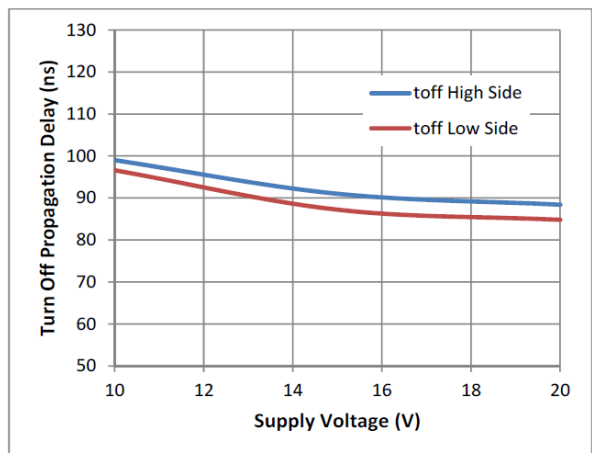
**Typical Performance Characteristics** (@T<sub>A</sub> = +25°C, unless otherwise specified.)



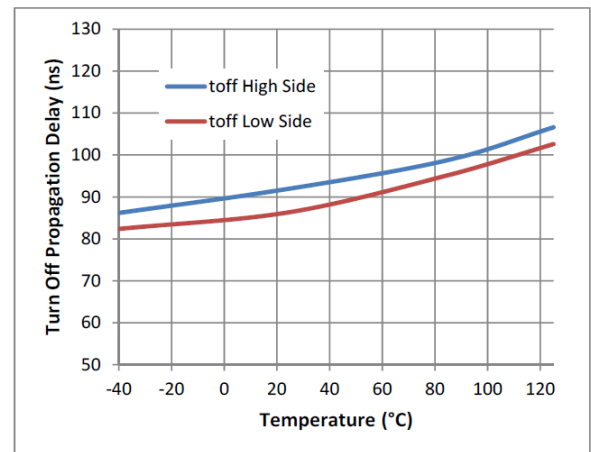
**Figure 5.** Turn-on Propagation Delay vs. Supply Voltage



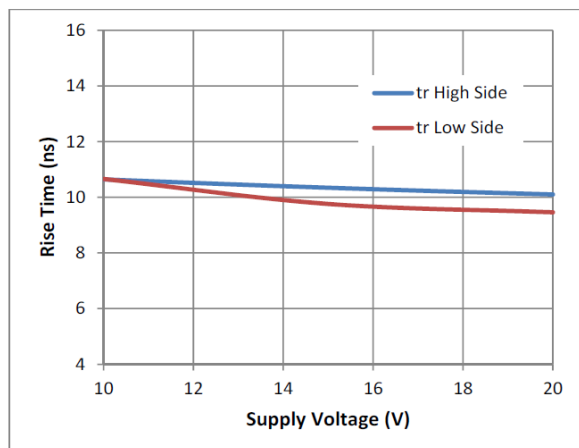
**Figure 6.** Turn-on Propagation Delay vs. Temperature



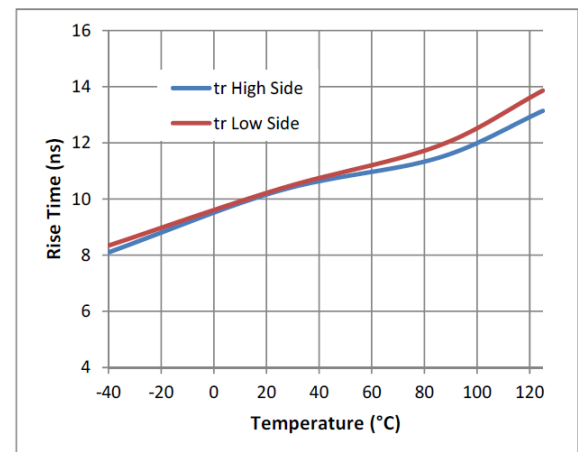
**Figure 7.** Turn-off Propagation Delay vs. Supply Voltage



**Figure 8.** Turn-off Propagation Delay vs. Temperature

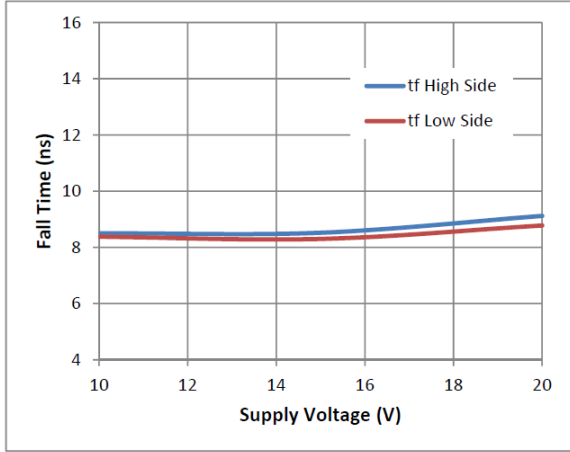


**Figure 9.** Rise Time vs. Supply Voltage

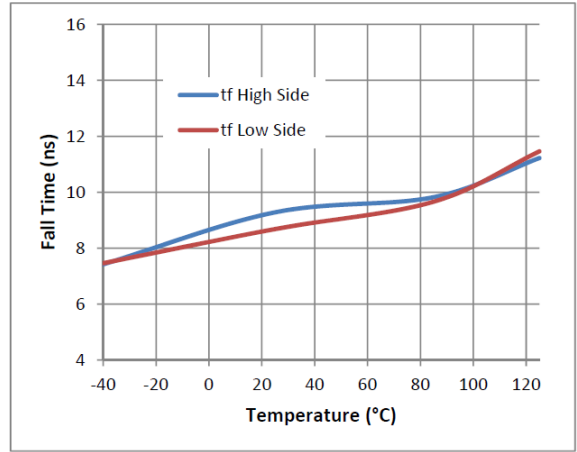


**Figure 10.** Rise Time vs. Temperature

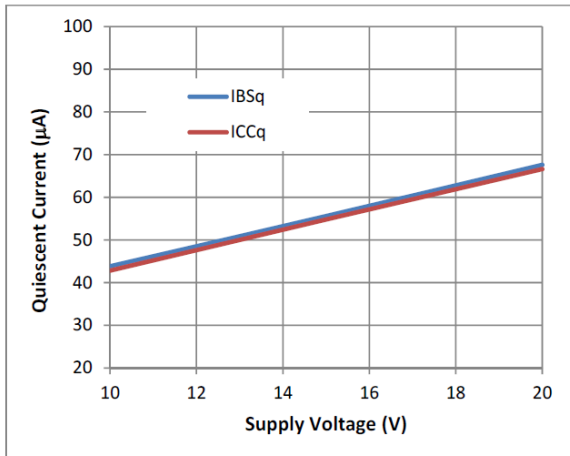
**Typical Performance Characteristics** (continued)



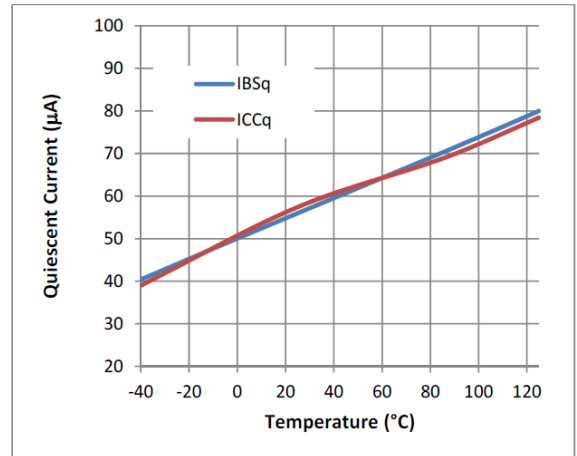
**Figure 11.** Fall Time vs. Supply Voltage



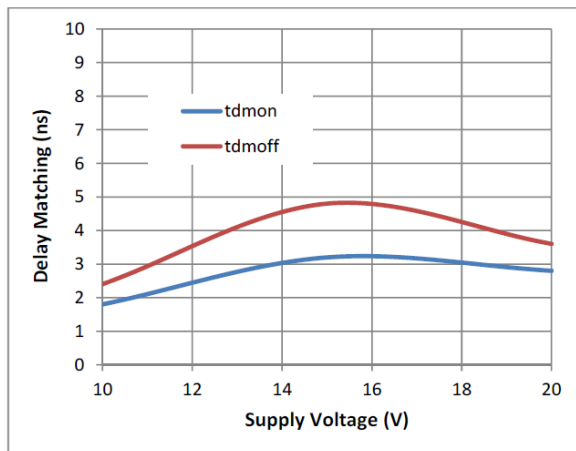
**Figure 12.** Fall Time vs. Temperature



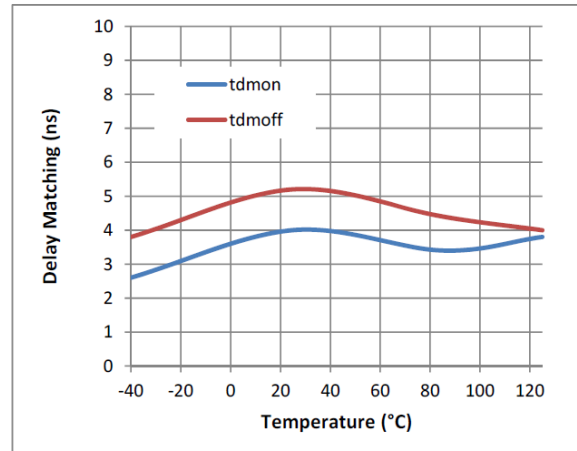
**Figure 13.** Quiescent Current vs. Supply Voltage



**Figure 14.** Quiescent Current vs. Temperature

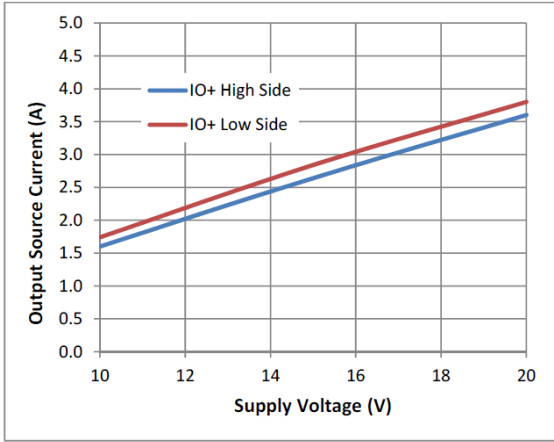


**Figure 15.** Delay Matching vs. Supply Voltage

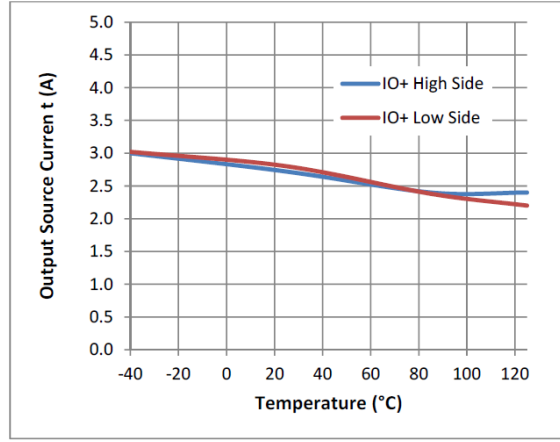


**Figure 16.** Delay Matching vs. Temperature

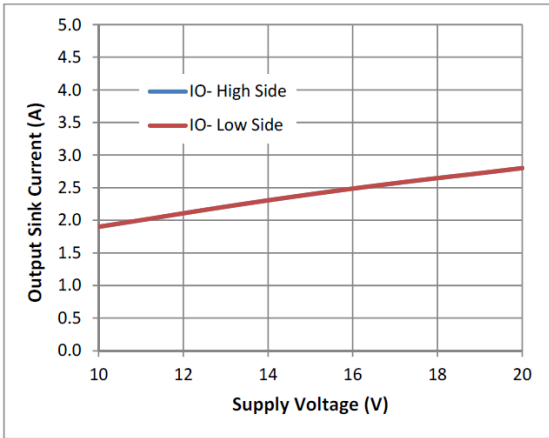
**Typical Performance Characteristics (cont.)**



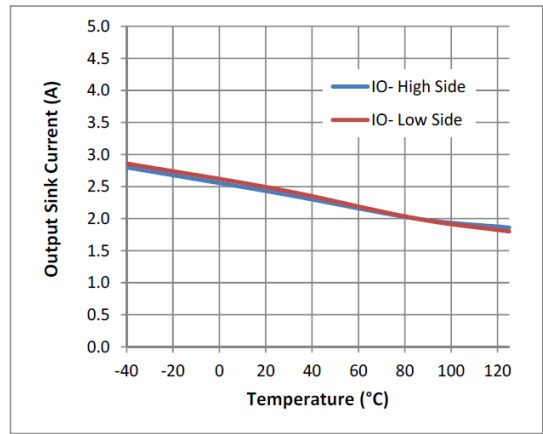
**Figure 17.** Output Source Current vs. Supply Voltage



**Figure 18.** Output Source Current vs. Temperature

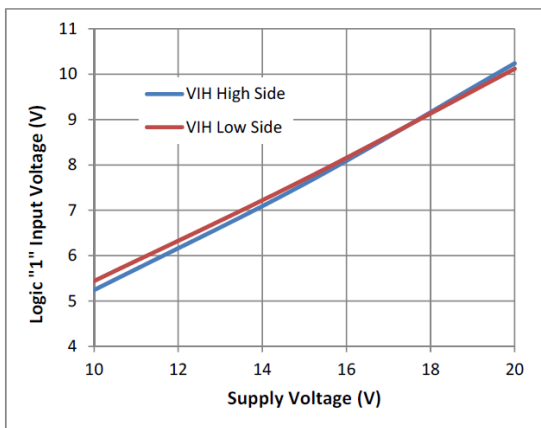


**Figure 19.** Output Sink Current vs. Supply Voltage

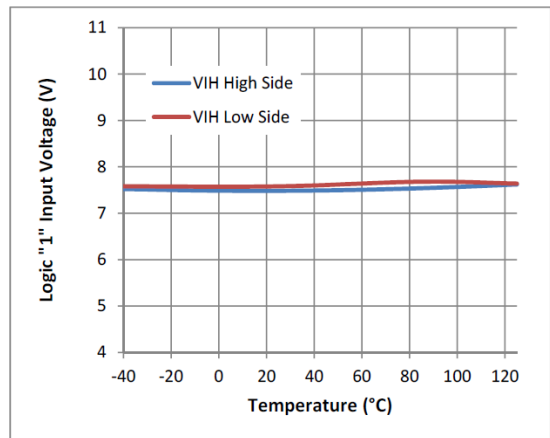


**Figure 20.** Output Sink Current vs. Temperature

Note: graphs overlap one another



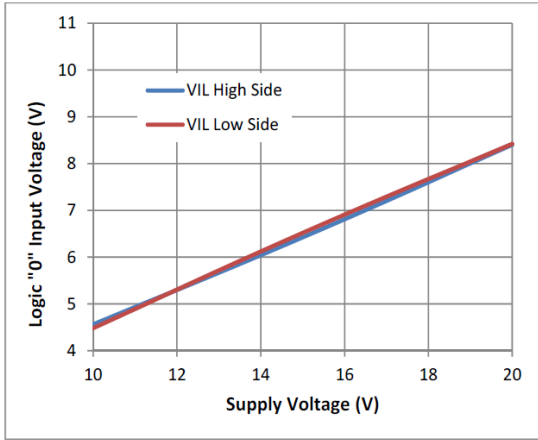
**Figure 21.** Logic 1 Input Voltage vs. Supply Voltage



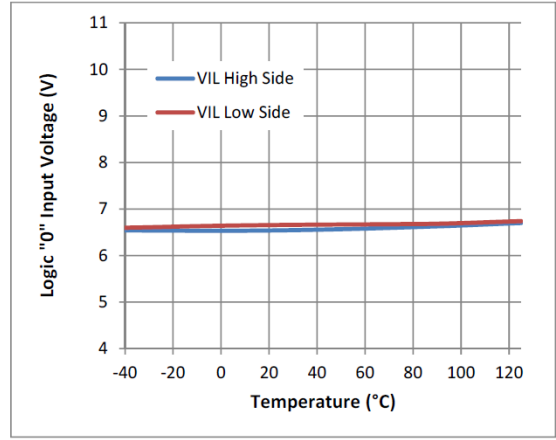
**Figure 22.** Logic 1 Input Voltage vs. Temperature



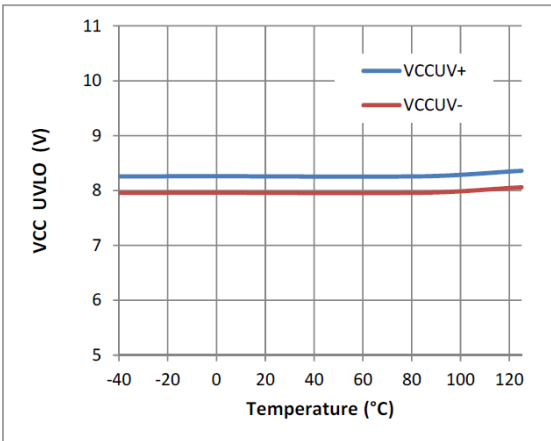
**Typical Performance Characteristics** (cont.)



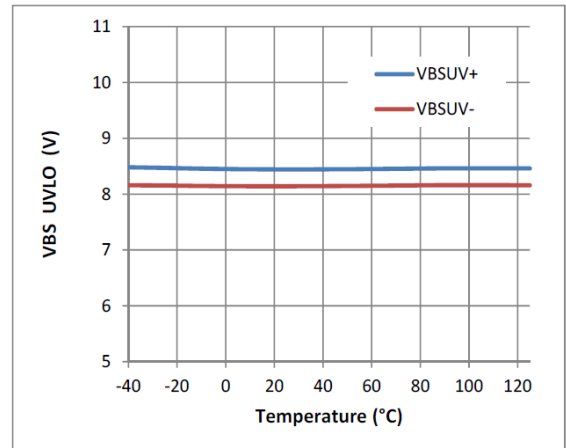
**Figure 23.** Logic 0 Input Voltage vs. Supply Voltage



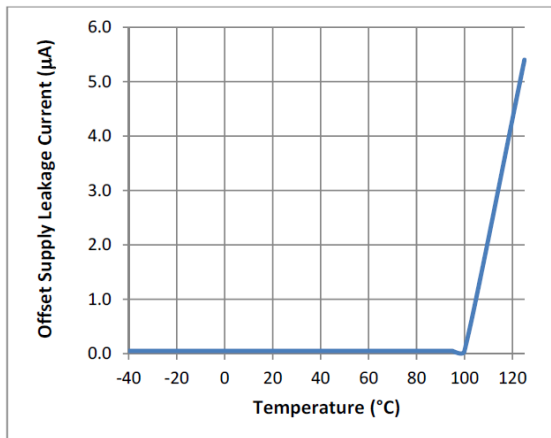
**Figure 24.** Logic 0 Input Voltage vs. Temperature



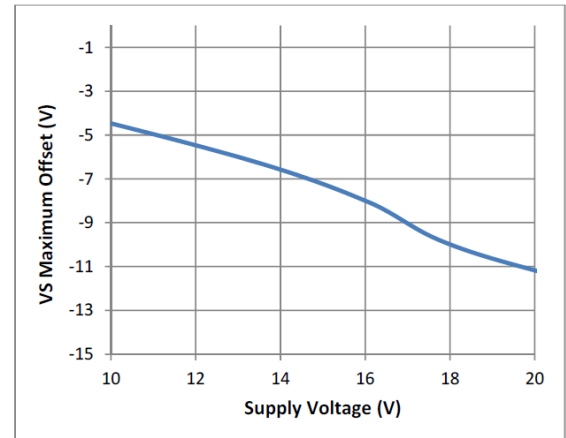
**Figure 25.**  $V_{CC}$  UVLO vs. Temperature



**Figure 26.**  $V_{BS}$  UVLO vs. Temperature

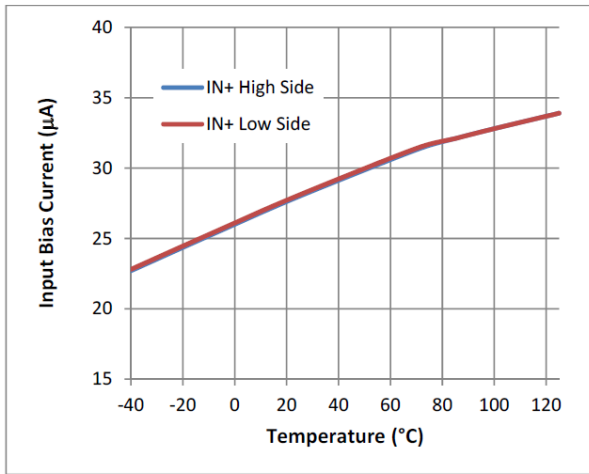


**Figure 27.** Offset Supply Leakage Current vs. Temperature



**Figure 28.**  $V_S$  Maximum Offset vs. Supply Voltage

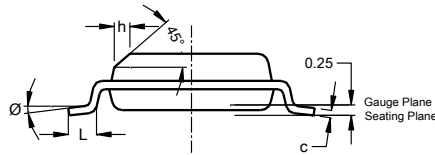
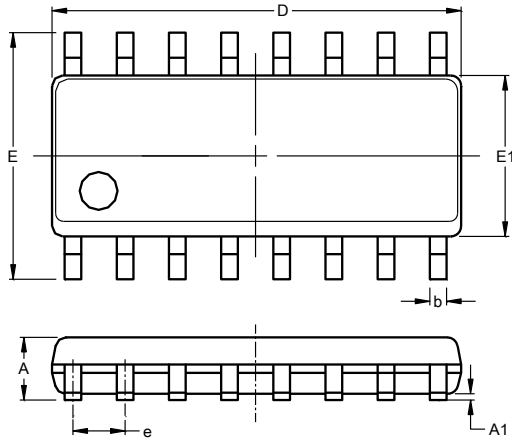
**Typical Performance Characteristics** (cont.)



**Figure 29.** Input Bias Current vs. Temperature

**Package Outline Dimensions**

Please see AP02001 at [http://www.diodes.com/\\_files/datasheets/ap02001.pdf](http://www.diodes.com/_files/datasheets/ap02001.pdf) for the latest version.

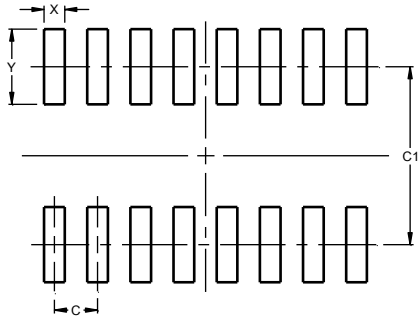


SO-16 (Type TH)			
Dim	Min	Max	Typ
A	2.36	2.64	--
A1	0.10	0.30	--
b	0.33	0.51	--
c	0.229	0.318	--
D	10.11	10.46	10.29
E	10.01	10.64	10.33
E1	7.42	7.59	7.52
e	--	--	1.27
h	--	--	0.48
L	0.41	1.27	--
Ø	0°	8°	--

All Dimensions in mm

**Suggested Pad Layout**

Please see AP02001 at [http://www.diodes.com/\\_files/datasheets/ap02001.pdf](http://www.diodes.com/_files/datasheets/ap02001.pdf) for the latest version.



Dimensions	Value (in mm)
C	1.27
C1	5.20
X	0.60
Y	2.20

Note: For high voltage applications, the appropriate industry sector guidelines should be considered with regards to creepage and clearance distances between device Terminals and PCB tracking.

**IMPORTANT NOTICE**

DIODES INCORPORATED MAKES NO WARRANTY OF ANY KIND, EXPRESS OR IMPLIED, WITH REGARDS TO THIS DOCUMENT, INCLUDING, BUT NOT LIMITED TO, THE IMPLIED WARRANTIES OF MERCHANTABILITY AND FITNESS FOR A PARTICULAR PURPOSE (AND THEIR EQUIVALENTS UNDER THE LAWS OF ANY JURISDICTION).

Diodes Incorporated and its subsidiaries reserve the right to make modifications, enhancements, improvements, corrections or other changes without further notice to this document and any product described herein. Diodes Incorporated does not assume any liability arising out of the application or use of this document or any product described herein; neither does Diodes Incorporated convey any license under its patent or trademark rights, nor the rights of others. Any Customer or user of this document or products described herein in such applications shall assume all risks of such use and will agree to hold Diodes Incorporated and all the companies whose products are represented on Diodes Incorporated website, harmless against all damages.

Diodes Incorporated does not warrant or accept any liability whatsoever in respect of any products purchased through unauthorized sales channel. Should Customers purchase or use Diodes Incorporated products for any unintended or unauthorized application, Customers shall indemnify and hold Diodes Incorporated and its representatives harmless against all claims, damages, expenses, and attorney fees arising out of, directly or indirectly, any claim of personal injury or death associated with such unintended or unauthorized application.

Products described herein may be covered by one or more United States, international or foreign patents pending. Product names and markings noted herein may also be covered by one or more United States, international or foreign trademarks.

This document is written in English but may be translated into multiple languages for reference. Only the English version of this document is the final and determinative format released by Diodes Incorporated.

**LIFE SUPPORT**

Diodes Incorporated products are specifically not authorized for use as critical components in life support devices or systems without the express written approval of the Chief Executive Officer of Diodes Incorporated. As used herein:

A. Life support devices or systems are devices or systems which:

1. are intended to implant into the body, or
2. support or sustain life and whose failure to perform when properly used in accordance with instructions for use provided in the labeling can be reasonably expected to result in significant injury to the user.

B. A critical component is any component in a life support device or system whose failure to perform can be reasonably expected to cause the failure of the life support device or to affect its safety or effectiveness.

Customers represent that they have all necessary expertise in the safety and regulatory ramifications of their life support devices or systems, and acknowledge and agree that they are solely responsible for all legal, regulatory and safety-related requirements concerning their products and any use of Diodes Incorporated products in such safety-critical, life support devices or systems, notwithstanding any devices- or systems-related information or support that may be provided by Diodes Incorporated. Further, Customers must fully indemnify Diodes Incorporated and its representatives against any damages arising out of the use of Diodes Incorporated products in such safety-critical, life support devices or systems.

Copyright © 2016, Diodes Incorporated

[www.diodes.com](http://www.diodes.com)

Компания «Океан Электроники» предлагает заключение долгосрочных отношений при поставках импортных электронных компонентов на взаимовыгодных условиях!

Наши преимущества:

- Поставка оригинальных импортных электронных компонентов напрямую с производств Америки, Европы и Азии, а так же с крупнейших складов мира;
- Широкая линейка поставок активных и пассивных импортных электронных компонентов (более 30 млн. наименований);
- Поставка сложных, дефицитных, либо снятых с производства позиций;
- Оперативные сроки поставки под заказ (от 5 рабочих дней);
- Экспресс доставка в любую точку России;
- Помощь Конструкторского Отдела и консультации квалифицированных инженеров;
- Техническая поддержка проекта, помощь в подборе аналогов, поставка прототипов;
- Поставка электронных компонентов под контролем ВП;
- Система менеджмента качества сертифицирована по Международному стандарту ISO 9001;
- При необходимости вся продукция военного и аэрокосмического назначения проходит испытания и сертификацию в лаборатории (по согласованию с заказчиком);
- Поставка специализированных компонентов военного и аэрокосмического уровня качества (Xilinx, Altera, Analog Devices, Intersil, Interpoint, Microsemi, Actel, Aeroflex, Peregrine, VPT, Syfer, Eurofarad, Texas Instruments, MS Kennedy, Miteq, Cobham, E2V, MA-COM, Hittite, Mini-Circuits, General Dynamics и др.);

Компания «Океан Электроники» является официальным дистрибьютором и эксклюзивным представителем в России одного из крупнейших производителей разъемов военного и аэрокосмического назначения «JONHON», а так же официальным дистрибьютором и эксклюзивным представителем в России производителя высокотехнологичных и надежных решений для передачи СВЧ сигналов «FORSTAR».



## JONHON

«JONHON» (основан в 1970 г.)

Разъемы специального, военного и аэрокосмического назначения:

(Применяются в военной, авиационной, аэрокосмической, морской, железнодорожной, горно- и нефтедобывающей отраслях промышленности)

«FORSTAR» (основан в 1998 г.)

ВЧ соединители, коаксиальные кабели,  
кабельные сборки и микроволновые компоненты:

(Применяются в телекоммуникациях гражданского и специального назначения, в средствах связи, РЛС, а так же военной, авиационной и аэрокосмической отраслях промышленности).



Телефон: 8 (812) 309-75-97 (многоканальный)

Факс: 8 (812) 320-03-32

Электронная почта: [ocean@oceanchips.ru](mailto:ocean@oceanchips.ru)

Web: <http://oceanchips.ru/>

Адрес: 198099, г. Санкт-Петербург, ул. Калинина, д. 2, корп. 4, лит. А