

---

## 36 V, 0.8% Accuracy, 300 mA, Voltage Regulator

---

NO.EA-321-160119

### OUTLINE

The R1513S is a CMOS-based voltage regulator (VR) featuring 300 mA output current and 36 V input voltage. Internally, the R1513S consists of a fold-back protection circuit, a short current protection circuit and a thermal shutdown circuit in addition to the basic regulator circuit.

The performance is specified for 25°C with  $\pm 0.8\%$  output voltage accuracy and for the  $-40^{\circ}\text{C}$  to  $125^{\circ}\text{C}$  temperature range with  $\pm 1.0\%$  output voltage accuracy. The operating temperature range is  $-40^{\circ}\text{C}$  to  $125^{\circ}\text{C}$  and the maximum input voltage is 36 V. All these features allow the R1513S to become an ideal power source of electric home appliances.

The R1513S is available in 1.2 V, 1.5 V, 1.8 V, 3.3 V, 3.4 V and 5.0 V fixed output voltage options. By using external divider resistors, the output voltage can be set over a 1.2 V to 18.0 V range.

The R1513S is offered in a 6-pin HSOP-6J high wattage package.

### FEATURES

- Input Voltage (Maximum Ratings)..... 3.5 V to 36 V (50 V)
- Operating Temperature Range.....  $-40^{\circ}\text{C}$  to  $125^{\circ}\text{C}$
- Supply Current..... Typ. 75  $\mu\text{A}$
- Standby Current..... Typ. 0.1  $\mu\text{A}$
- Dropout Voltage ..... Typ. 0.32 V ( $I_{\text{OUT}} = 300 \text{ mA}$ ,  $V_{\text{OUT}} = 5.0 \text{ V}$ )
- Output Voltage Accuracy .....  $\pm 0.8\%$  ( $T_{\text{a}} = 25^{\circ}\text{C}$ )  
 $\pm 1.0\%$  ( $-40^{\circ}\text{C}$  to  $125^{\circ}\text{C}$ )
- Line Regulation ..... Typ. 0.01%/V ( $V_{\text{DD}} = V_{\text{OUT}} + 1 \text{ V}$  to 36 V)
- Package Type ..... HSOP-6J
- Output Voltage ..... 1.2 V / 1.5 V / 1.8 V / 3.3 V / 3.4 V / 5.0 V
- Short-current Protection Circuit..... Current Limit Typ. 50 mA
- Fold-back Protection Circuit ..... Current Limit Typ. 450 mA
- Thermal Shutdown Circuit..... Shutdown at Typ.  $160^{\circ}\text{C}$
- Ripple Rejection ..... Typ. 70 dB ( $f = 100 \text{ Hz}$ )
- Ceramic Capacitor Compatible ..... C1 = 1.0  $\mu\text{F}$  or more, C2 = 4.7  $\mu\text{F}$  or more

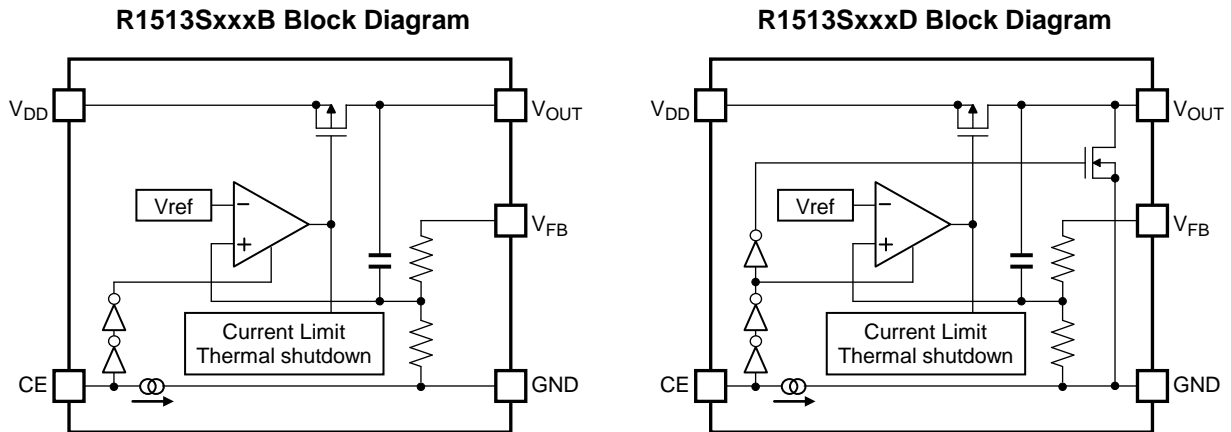
### APPLICATIONS

- Power source for home appliances such as refrigerators, rice cookers, and electric hot-water pot.
- Power source for notebook PCs, digital TVs, cordless phones, and private LAN system.
- Power source for office equipment machines such as copiers, printers, facsimiles, scanners, and projectors.

# R1513S

NO.JA-321-160119

## BLOCK DIAGRAM



## SELECTION GUIDE

The set output voltage and the auto-discharge option\*<sup>1</sup> are user-selectable options.

### Selection Guide

Product Name	Package	Quantity per Reel	Pb Free	Halogen Free
R1513Sxx1*-E2-FE	HSOP-6J	1,000 pcs	Yes	Yes

xx: Specify the set output voltage ( $V_{SET}$ ) from below.

1.2 V (12) / 1.5 V (15) / 1.8 V (18) / 3.3 V (33) / 3.4 V (34) / 5.0 V (50)

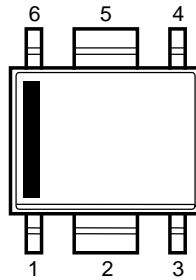
\*: Specify the auto-discharge option.

B: Auto-discharge option not included

D: Auto-discharge option included

<sup>1</sup> Auto-discharge function quickly lowers the output voltage to 0 V, when the chip enable signal is switched from the active mode to the standby mode, by releasing the electrical charge accumulated in the external capacitor.

## PIN DESCRIPTION



HSOP-6J Pin Configuration

### HSOP-6J Pin Description

Pin No.	Symbol	Description
1	$V_{OUT}$	Output Pin
2	GND <sup>*1</sup>	Ground Pin
3	$V_{FB}$	Feedback Pin
4	CE	Chip Enable Pin, Active-high
5	GND <sup>*1</sup>	Ground Pin
6	$V_{DD}$	Input Pin

<sup>\*1</sup> The GND pins must be wired together when they are mounted on board.

## ABSOLUTE MAXIMUM RATINGS

### Absolute Maximum Ratings

Symbol	Item		Rating	Unit
$V_{IN}$	Input Voltage		-0.3 to 50	V
$V_{IN}$	Peak Input Voltage* <sup>1</sup>		60	V
$V_{CE}$	CE Pin Input Voltage		-0.3 to 50	V
$V_{FB}$	$V_{FB}$ Pin Input Voltage		$-0.3 \text{ to } V_{OUT} + 0.3 \leq 50$	V
$V_{OUT}$	Output Voltage		$-0.3 \sim V_{IN} + 0.3 \leq 50$	V
$P_D$	Power Dissipation* <sup>2</sup>	Ultra High Wattage Land Pattern	3400	mW
		Standard Land Pattern	2100	
$T_a$	Operating Temperature Range		-40 to 125	°C
$T_{stg}$	Storage Temperature Range		-55 to 150	°C

\*<sup>1</sup> Duration time = 200 ms

\*<sup>2</sup> Refer to *PACKAGE INFORMATION* for detailed information.

### ABSOLUTE MAXIMUM RATINGS

Electronic and mechanical stress momentarily exceeded absolute maximum ratings may cause the permanent damages and may degrade the life time and safety for both device and system using the device in the field. The functional operation at or over these absolute maximum ratings is not assured.

### RECOMMENDED OPERATING CONDITIONS (ELECTRICAL CHARACTERISTICS)

All of electronic equipment should be designed that the mounted semiconductor devices operate within the recommended operating conditions. The semiconductor devices cannot operate normally over the recommended operating conditions, even if when they are used over such conditions by momentary electronic noise or surge. And the semiconductor devices may receive serious damage when they continue to operate over the recommended operating conditions.

## ELECTRICAL CHARACTERISTICS

$C1 = 1.0 \mu\text{F}$ ,  $C2 = 4.7 \mu\text{F}$ ,  $V_{\text{OUT}} = V_{\text{FB}}$ ,  $V_{\text{SET}} = \text{Set Output Voltage}$ , unless otherwise noted.

The specifications surrounded by  $\square$  are guaranteed by design engineering at  $-40^\circ\text{C} \leq T_a \leq 125^\circ\text{C}$ .

### R1513SxxxB/D Electrical Characteristics

( $T_a = 25^\circ\text{C}$ )

Symbol	Item	Conditions	Min.	Typ.	Max.	Unit
$I_{\text{SS}}$	Supply Current	$V_{\text{IN}} = 14 \text{ V}$ , $I_{\text{OUT}} = 0 \text{ mA}$		75	$\square 110$	$\mu\text{A}$
$I_{\text{standby}}$	Standby Current	$V_{\text{IN}} = 36 \text{ V}$ , $V_{\text{CE}} = 0 \text{ V}$		0.1	$\square 2.0$	$\mu\text{A}$
$V_{\text{OUT}}$	Output Voltage	$3.5 \text{ V} \leq V_{\text{SET}} + 1 \text{ V} \leq V_{\text{IN}} \leq 36 \text{ V}$ , $I_{\text{OUT}} = 1 \text{ mA}$	$V_{\text{SET}} \leq 1.8 \text{ V}$		$\square 18$	mV
			$1.8 \text{ V} < V_{\text{SET}}$	$\times 0.99$	$\square 1.01$	V
		$3.5 \text{ V} \leq V_{\text{SET}} + 1 \text{ V} \leq V_{\text{IN}} \leq 14 \text{ V}$ , $1 \text{ mA} \leq I_{\text{OUT}} \leq 50 \text{ mA}$	$V_{\text{SET}} \leq 1.8 \text{ V}$		$\square 18$	mV
			$1.8 \text{ V} < V_{\text{SET}}$	$\times 0.99$	$\square 1.01$	V
$\frac{\Delta V_{\text{OUT}}}{\Delta V_{\text{IN}}}$	Line Regulation	$3.5 \text{ V} \leq V_{\text{SET}} + 1 \text{ V} \leq V_{\text{IN}} \leq 36 \text{ V}$ $I_{\text{OUT}} = 1 \text{ mA}$	$\square -0.02$	0.01	$\square 0.02$	%/V
$\frac{\Delta V_{\text{OUT}}}{\Delta I_{\text{OUT}}}$	Load Regulation	$3.5 \text{ V} \leq V_{\text{IN}} = V_{\text{SET}} + 1 \text{ V}$ , $1 \text{ mA} \leq I_{\text{OUT}} \leq 300 \text{ mA}$	$V_{\text{SET}} \leq 1.8 \text{ V}$		$\square 5$	mV
			$V_{\text{SET}} = 3.3 \text{ V}$		$\square 8$	
			$V_{\text{SET}} = 5.0 \text{ V}$		$\square 12$	
$V_{\text{DIF}}$	Dropout Voltage	$I_{\text{OUT}} = 300 \text{ mA}$	$V_{\text{SET}} = 1.2 \text{ V}$		$\square 2.30$	V
			$1.5 \text{ V} \leq V_{\text{SET}}$		$\square 2.00$	
			$1.8 \text{ V} \leq V_{\text{SET}}$		$\square 1.70$	
			$3.3 \text{ V} \leq V_{\text{SET}}$	0.39	$\square 0.74$	
			$5.0 \text{ V} \leq V_{\text{SET}}$	0.32	$\square 0.60$	
$I_{\text{LIM}}$	Output Current Limit	$V_{\text{IN}} = V_{\text{SET}} + 1.5 \text{ V}$	$\square 300$	450		mA
$I_{\text{SC}}$	Short Current Limit	$V_{\text{OUT}} = 0 \text{ V}$	$\square 40$	50		mA
$R_{\text{FB}}$	Feedback Resistance		$\square 1.0$	2.4		M $\Omega$
$V_{\text{CEH}}$	CE Input Voltage "H"		$\square 2.2$		$\square 36$	V
$V_{\text{CEL}}$	CE Input Voltage "L"		$\square 0$		$\square 1.0$	V
$I_{\text{PD}}$	CE Pull-down Current	$V_{\text{CE}} = 5.0 \text{ V}$		0.2	$\square 0.6$	$\mu\text{A}$
		$V_{\text{CE}} = 36 \text{ V}$		0.5	$\square 1.3$	
$T_{\text{TSD}}$	Thermal Shutdown Temperature	Junction Temperature	$\square 150$	160		$^\circ\text{C}$
$T_{\text{TSR}}$	Thermal Shutdown Released Temperature	Junction Temperature	$\square 125$	135		$^\circ\text{C}$
$R_{\text{LOW}}$	Low Output Nch Tr. ON Resistance (R1513SxxxD)	$V_{\text{IN}} = 14.0 \text{ V}$ , $V_{\text{CE}} = 0 \text{ V}$	$\square 1.5$	3.2	$\square 6.7$	k $\Omega$

All test items listed under *Electrical Characteristics* are done under the pulse load condition ( $T_j \approx T_a = 25^\circ\text{C}$ ).

---

**R1513S**

---

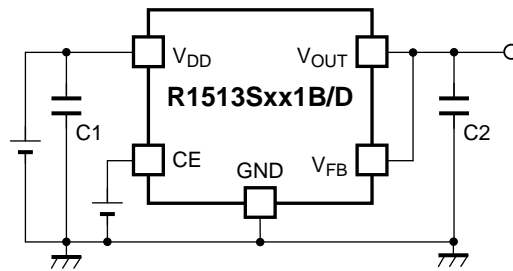
NO.JA-321-160119

The specifications surrounded by  $\square$  are guaranteed by design engineering at  $-40^{\circ}\text{C} \leq T_a \leq 125^{\circ}\text{C}$ .**Product-specific Electrical Characteristics**

(Ta = 25°C)

Product Name	V <sub>OUT</sub> [V]			$\Delta V_{\text{OUT}}/\Delta I_{\text{OUT}}$ [mV]		V <sub>DIF</sub> [V]	
	MIN.	TYP.	MAX.	MIN.	MAX.	TYP.	MAX.
R1513S121x	$\square 1.182$	1.200	$\square 1.218$	$\square -5$	$\square 5$		$\square 2.30$
R1513S151x	$\square 1.482$	1.500	$\square 1.518$	$\square -5$	$\square 5$		$\square 2.00$
R1513S181x	$\square 1.782$	1.800	$\square 1.818$	$\square -5$	$\square 5$		$\square 1.70$
R1513S331x	$\square 3.267$	3.300	$\square 3.333$	$\square -8$	$\square 8$	0.39	$\square 0.74$
R1513S341x	$\square 3.366$	3.400	$\square 3.434$	$\square -8$	$\square 8$	0.39	$\square 0.74$
R1513S501x	$\square 4.950$	5.000	$\square 5.050$	$\square -12$	$\square 12$	0.32	$\square 0.60$

## TYPICAL APPLICATION



R1513S Typical Application

### External Components List

Symbol	Description
C1	1.0 $\mu$ F, Ceramic Capacitor
C2	4.7 $\mu$ F, Ceramic Capacitor

## TECHNICAL NOTES

### Phase Compensation

Phase compensation is provided to secure stable operation even when the load current is varied. For this purpose, use a 4.7  $\mu$ F or more output capacitor (C2) with good frequency characteristics and proper ESR (Equivalent Series Resistance). Connect a 1.0  $\mu$ F or more input capacitor (C1) between the  $V_{DD}$  pin and the GND pin as close as possible to the pins.

In case of using a tantalum type capacitor with a large ESR, the output might become unstable. Evaluate your circuit including consideration of frequency characteristics.

Depending on the capacitor size, manufacturer, and part number, the bias characteristics and the temperature characteristics vary.

### PCB Layout

Ensure the  $V_{DD}$  and GND lines are sufficiently robust. If their impedance is too high, noise pickup or unstable operation may result. No. 2 pin and No.5 pin must be wired together when mounting on board. Connect a capacitor with a suitable value between the  $V_{DD}$  and GND pins, and as close as possible to the pins. The load regulation can be improved by short-circuiting  $V_{OUT}$  and  $V_{FB}$  close to the load device.

---

## R1513S

---

NO.JA-321-160119

### Thermal Shutdown Function

Thermal shutdown function detects overheating of the regulator and stops the regulator operation to protect the device from damage. Thermal shutdown circuit stops the regulator operation if the junction temperature becomes higher than 160°C (Typ.) and restarts the regulator operation if the junction temperature drops below 135°C (Typ.). The regulator repeats turning on and off and creates pulse waveform until the cause of the overheating is removed.

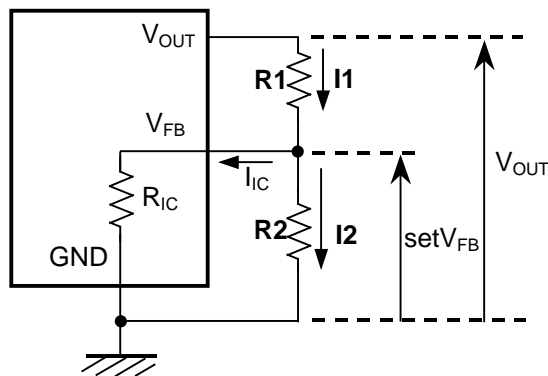
### Adjustable Output Voltage Setting

Output voltage can be adjusted by using the external divider resistors (R1, R2). By using the following equation, the output voltage ( $V_{OUT}$ ) can be determined. The voltage which is fixed inside the IC is described as  $V_{FB}$ .

$$V_{OUT} = V_{FB} \times ((R1 + R2) / R2)$$

Recommended Output Voltage Range:  $1.2 \text{ V} \leq V_{OUT} \leq 18 \text{ V}$

$$V_{FB} = V_{SET}$$



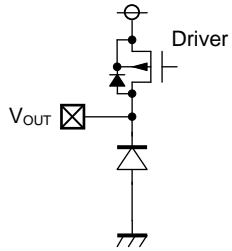
**Output Voltage Adjustment Using External Divider Resistors (R1, R2)**

The minimum resistance value for a resistor ( $R_{IC}$ ) is 1 M $\Omega$  ( $T_a = 25^\circ\text{C}$ , guaranteed by design). For better accuracy, setting  $R1 \ll R_{IC}$  reduces errors. The resistance value for a resistor ( $R2$ ) should be set to 33 k $\Omega$  or lower. If the resistance values set for  $R1$  and  $R2$  are larger, the impedance of the  $V_{FB}$  pin becomes larger.

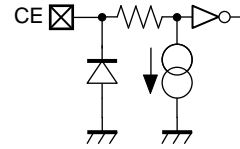
$R_{IC}$  could be affected by temperature; therefore, evaluate the circuit taking the actual conditions of use into account when deciding the resistance values for  $R1$  and  $R2$ .



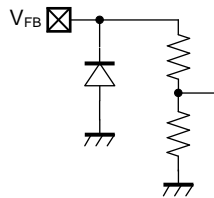
## PIN EQUIVALENT CIRCUIT DIAGRAMS



V<sub>OUT</sub> Pin Equivalent Circuit Diagrams



CE Pin Equivalent Circuit Diagrams



V<sub>FB</sub> Pin Equivalent Circuit Diagrams

# R1513S

NO.JA-321-160119

## PACKAGE INFORMATION

### POWER DISSIPATION (HSOP-6J)

Power Dissipation ( $P_D$ ) of the package is dependent on PCB material, layout, and environmental conditions. The following conditions are used in this measurement.

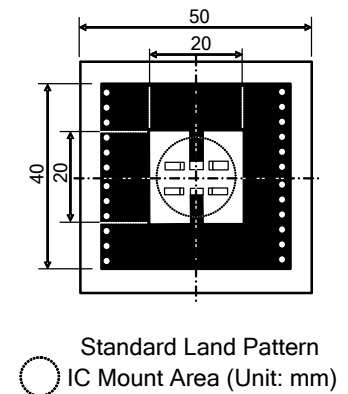
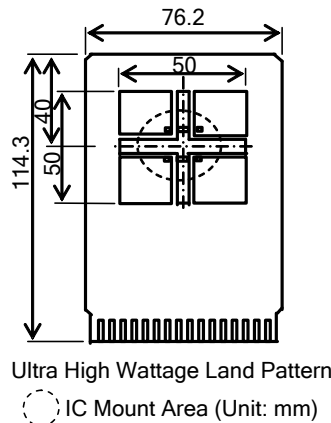
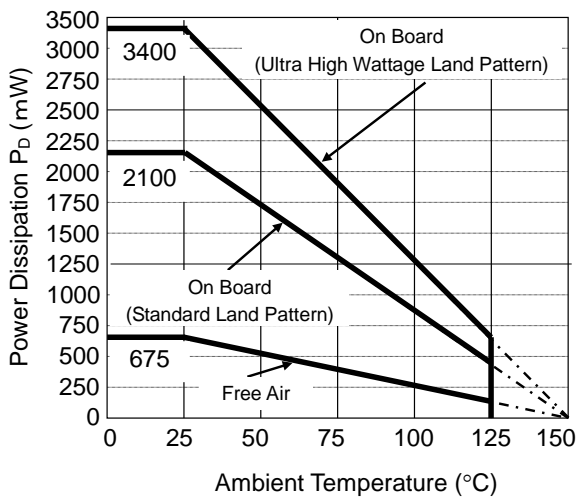
#### Measurement Conditions

	Ultra High Wattage Land Pattern	Standard Land Pattern
Environment	Mounting on Board (Wind Velocity = 0 m/s)	Mounting on Board (Wind Velocity = 0 m/s)
Board Material	Glass Cloth Epoxy Plastic (Four-layers)	Glass Cloth Epoxy Plastic (Double-layers)
Board Dimensions	76.2 mm x 114.3 mm x 0.8 mm	50 mm x 50 mm x 1.6 mm
Copper Ratio	96%	50%
Through-hole	$\phi 0.3$ mm x 28 pcs	$\phi 0.5$ mm x 24 pcs

#### Measurement Result

( $T_a = 25^\circ\text{C}$ ,  $T_{j\text{max}} = 150^\circ\text{C}$ )

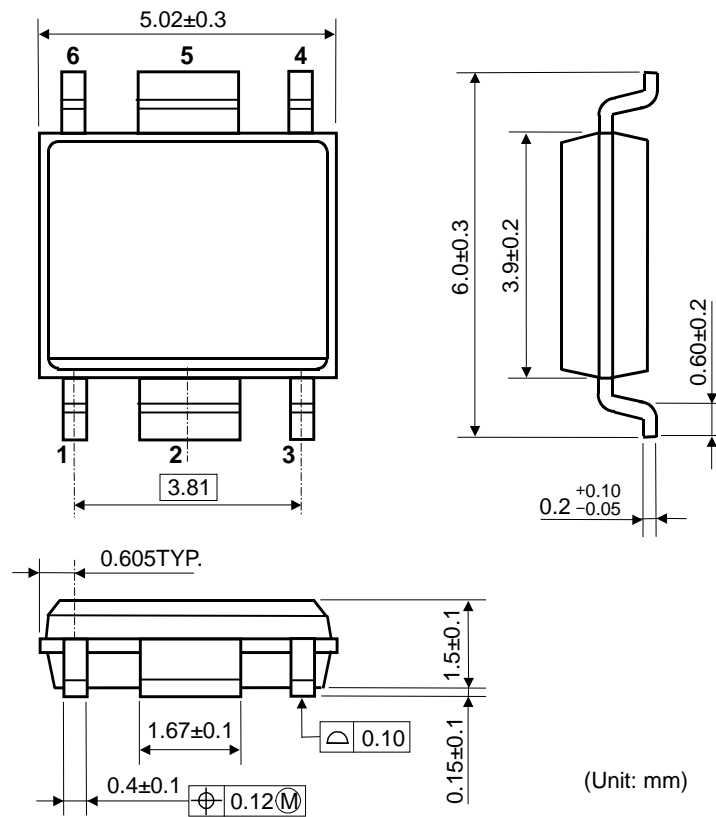
	Ultra High Wattage Land Pattern	Standard Land Pattern	Free Air
Power Dissipation	3400 mW	2100 mW	675 mW
Thermal Resistance	$37^\circ\text{C/W}$	$59^\circ\text{C/W}$	$185^\circ\text{C/W}$



Power Dissipation vs. Ambient Temperature

Measurement Board Pattern

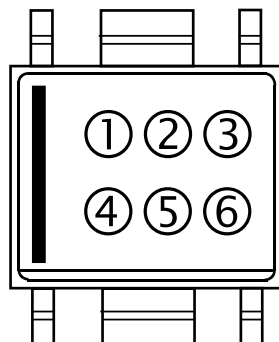
**PACKAGE DIMENSIONS (HSOP-6J)**



**HSOP-6J Package Dimensions**

**MARK SPECIFICATION (HSOP-6J)**

- ①②③④: Product Code ... **Refer to MARK SPECIFICATION TABLE (HSOP-6J).**
- ⑤⑥: Lot Number ... Alphanumeric Serial Number



**HSOP-6J Mark Specification**

---

**R1513S**

---

NO.JA-321-160119

**MARK SPECIFICATION TABLE (HSOP-6J)****Mark Specification Table**

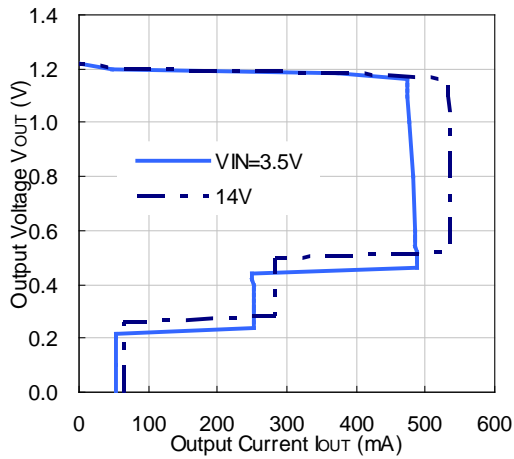
<b>Product Name</b>	<b>①②③④</b>
R1513S121B	Z 1 2 B
R1513S151B	Z 1 5 B
R1513S181B	Z 1 8 B
R1513S331B	Z 3 3 B
R1513S341B	Z 3 4 B
R1513S501B	Z 5 0 B
R1513S121D	Z 1 2 D
R1513S151D	Z 1 5 D
R1513S181D	Z 1 8 D
R1513S331D	Z 3 3 D
R1513S341D	Z 3 4 D
R1513S501D	Z 5 0 D

## TYPICAL CHARACTERISTICS

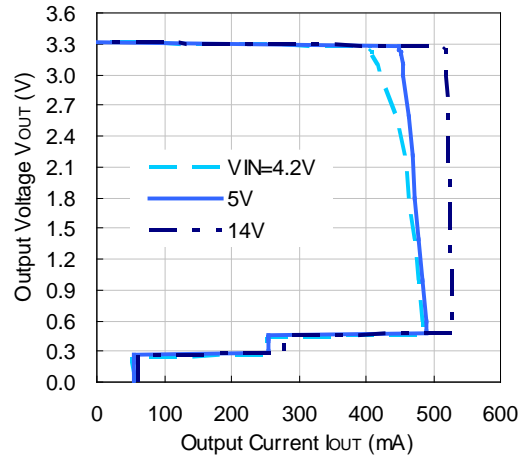
Note: Typical Characteristics are intended to be used as reference data; they are not guaranteed.

### 1) Output Voltage vs. Output Current (Ta = 25°C)

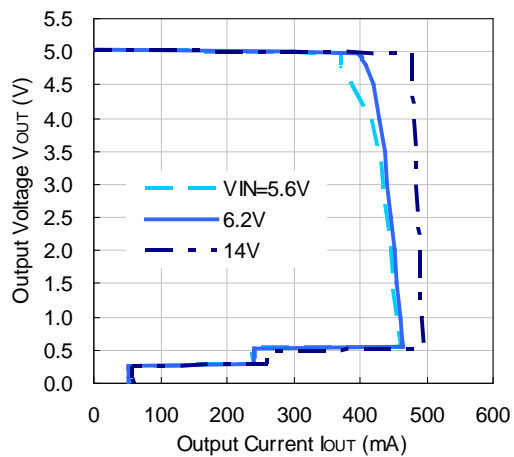
R1513S121B/D



R1513S331B/D

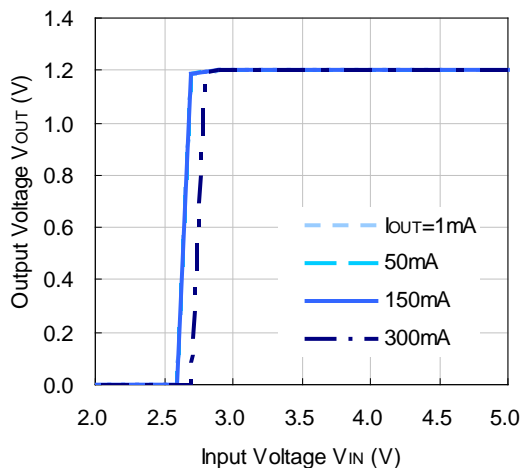


R1513S501B/D

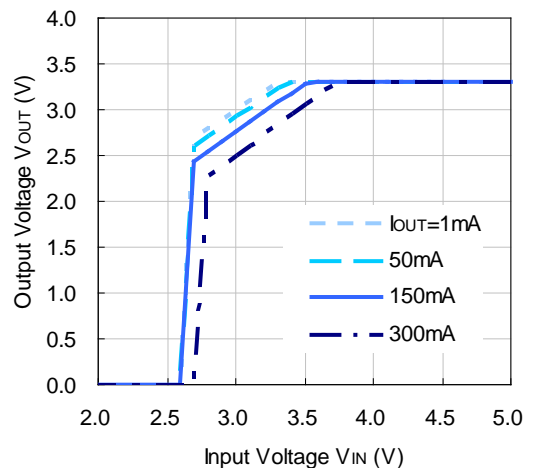


### 2) Output Voltage vs. Input Voltage (Ta = 25°C)

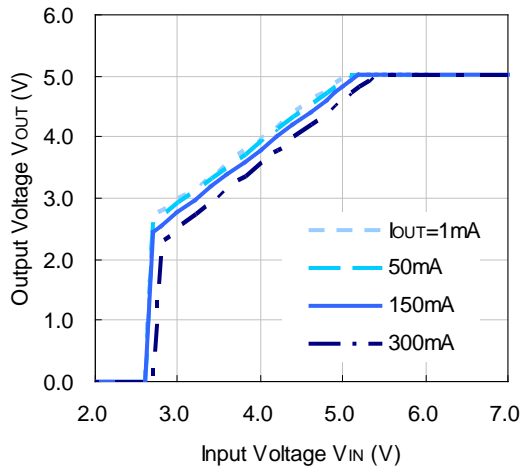
R1513S121B/D



R1513S331B/D

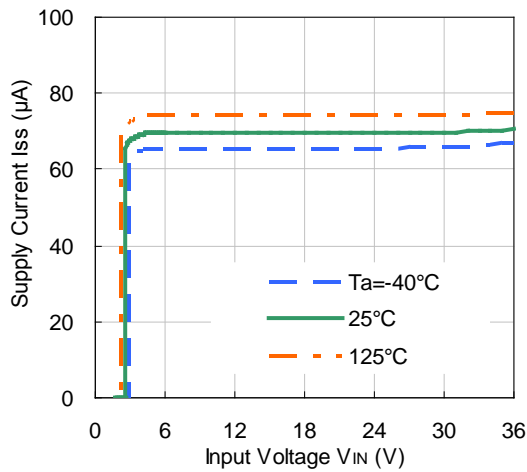


**R1513S501B/D**

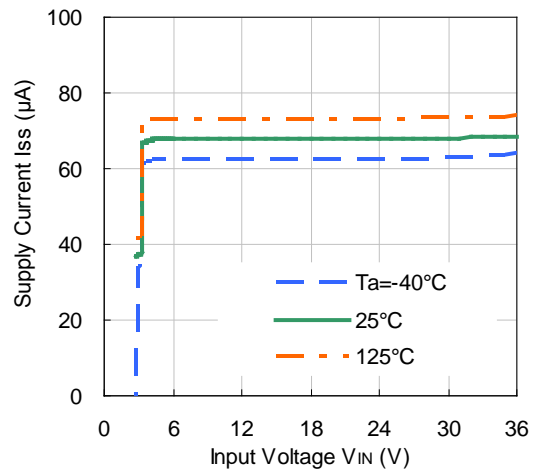


**3) Supply Current vs. Input Voltage (Ta = 25°C)**

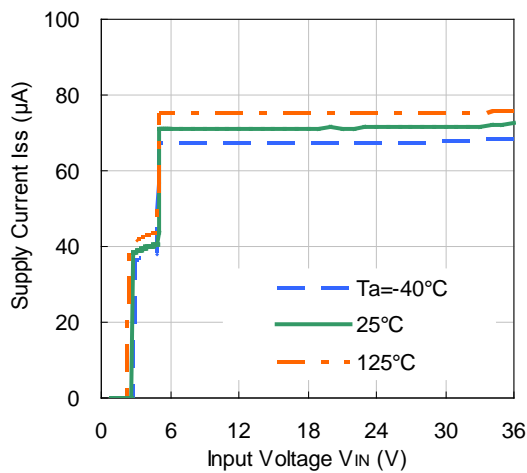
**R1513S121B/D**



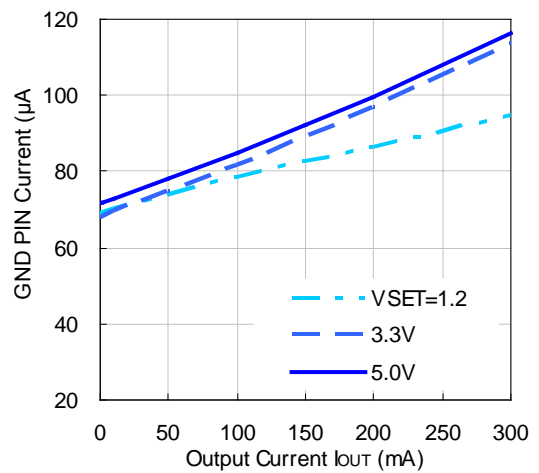
**R1513S331B/D**



**R1513S501B/D**

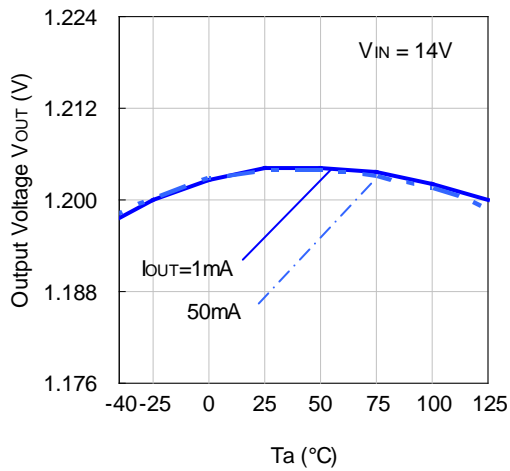


**4) GND Pin Current vs. Output Current (Ta = 25°C)**

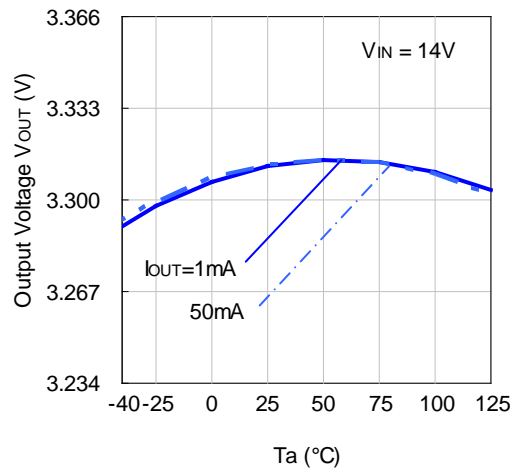


5) Output Voltage vs. Ambient Temperature

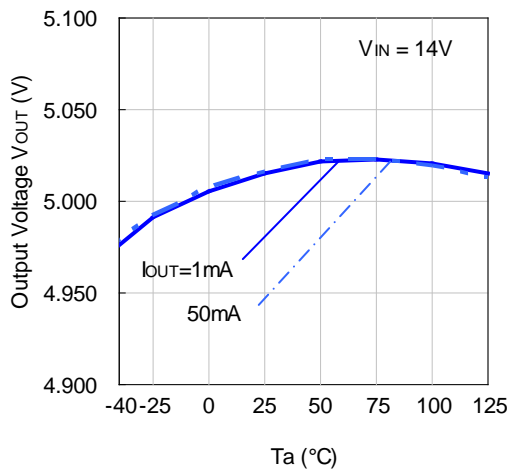
R1513S121B/D



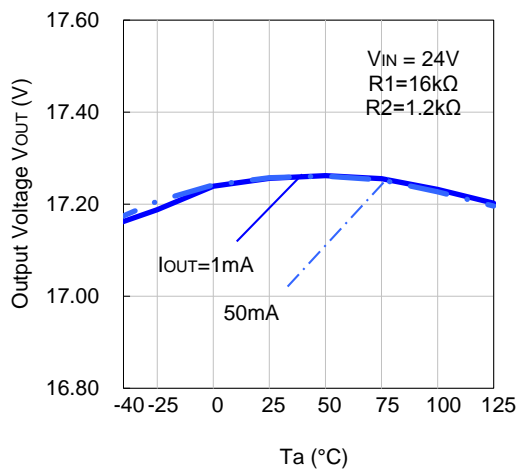
R1513S331B/D



R1513S501B/D

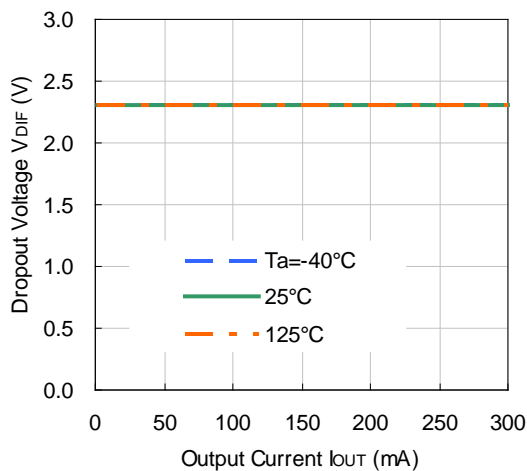


R1513S121B/D  
(Output Voltage Adjusted to 17.2 V)

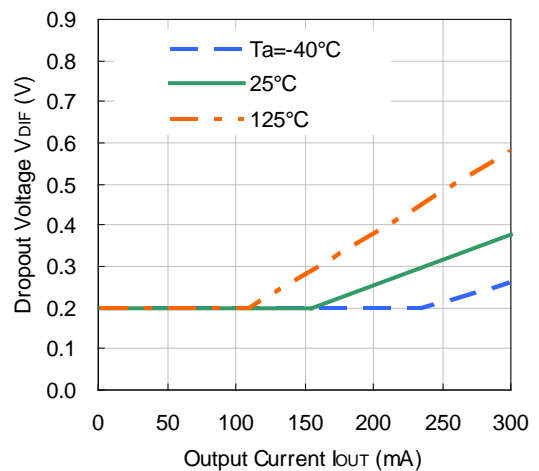


6) Dropout Voltage vs. Output Current

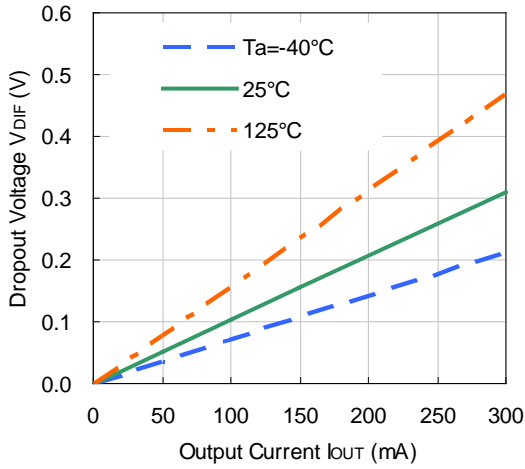
R1513S121B/D



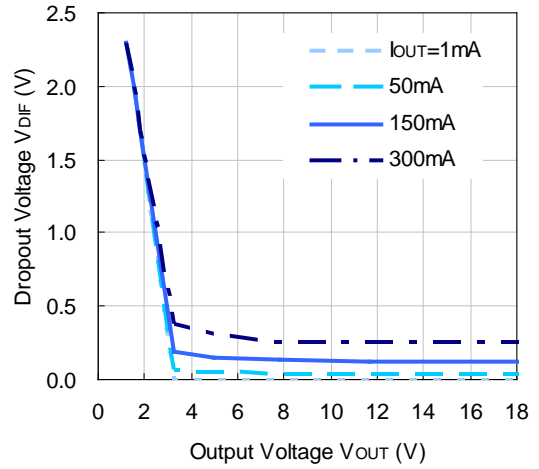
R1513S331B/D



**R1513S501B/D**

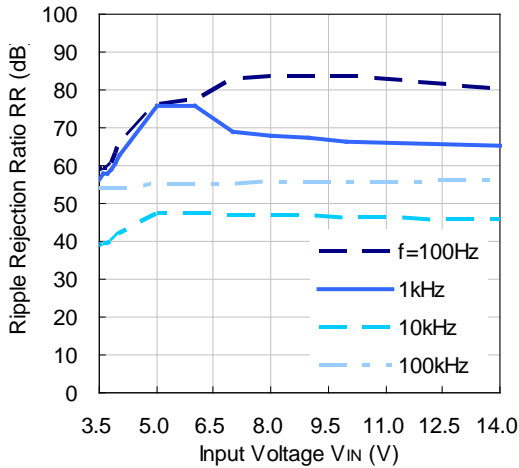


**7) Dropout Voltage vs. Output Voltage ( $T_a = 25^\circ\text{C}$ )**

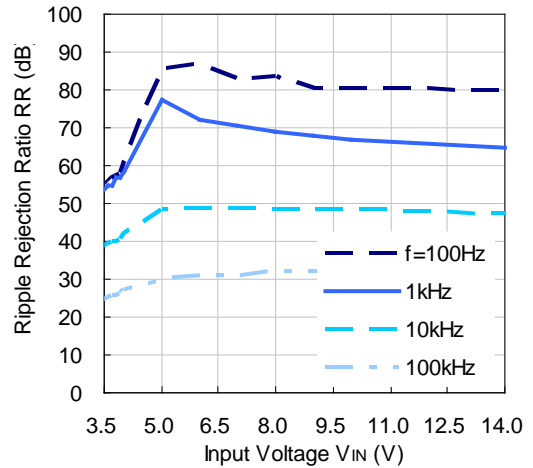


**8) Ripple Rejection vs. Input Voltage ( $T_a = 25^\circ\text{C}$ , Ripple = 0.5 Vpp)**

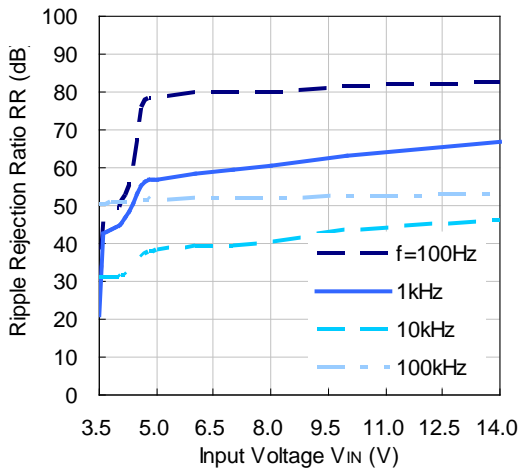
**R1513S121B/D ( $I_{OUT} = 1\text{ mA}$ )**



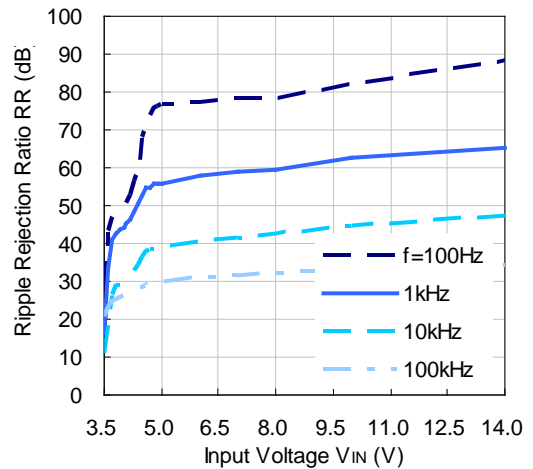
**R1513S121B/D ( $I_{OUT} = 50\text{ mA}$ )**



**R1513S331B/D ( $I_{OUT} = 1\text{ mA}$ )**

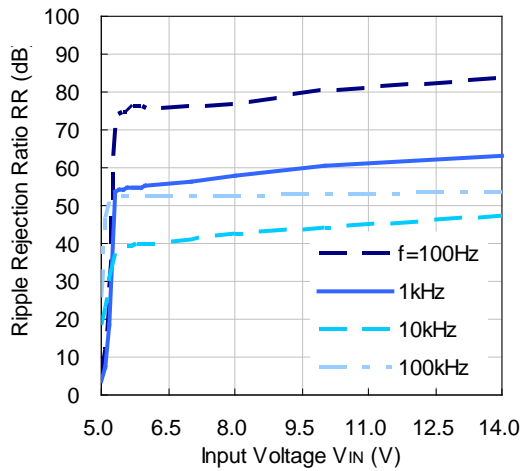


**R1513S331B/D ( $I_{OUT} = 50\text{ mA}$ )**

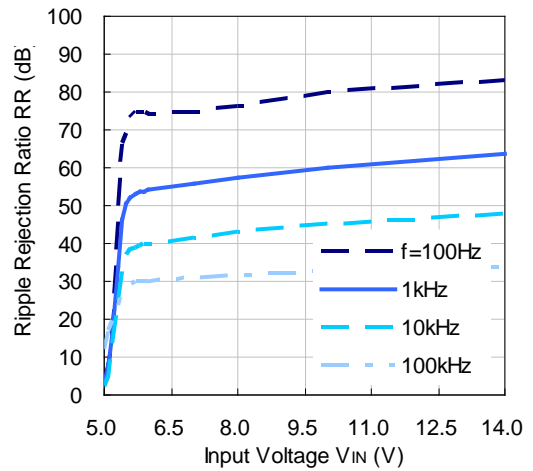




R1513S501B/D ( $I_{OUT} = 1 \text{ mA}$ )

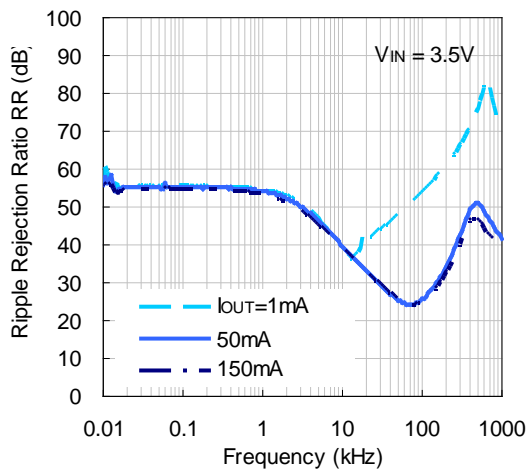


R1513S501B/D ( $I_{OUT} = 50 \text{ mA}$ )

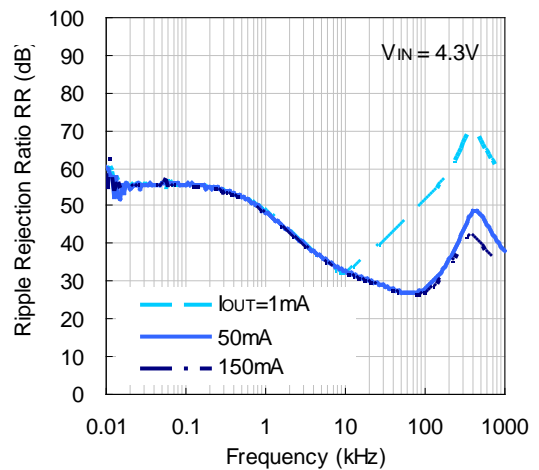


9) Ripple Rejection vs. Frequency ( $T_a = 25^\circ\text{C}$ , Ripple = 0.5 Vpp)

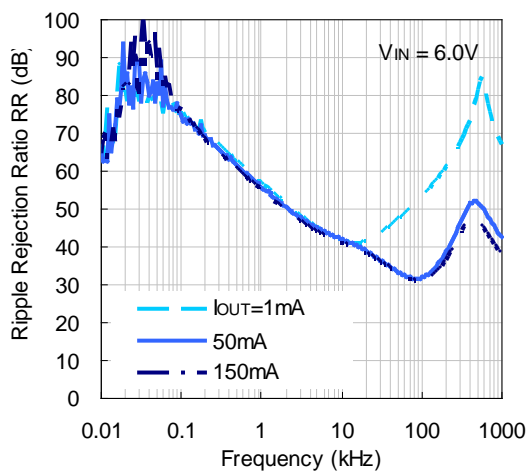
R1513S121B/D



R1513S331B/D



R1513S501B/D

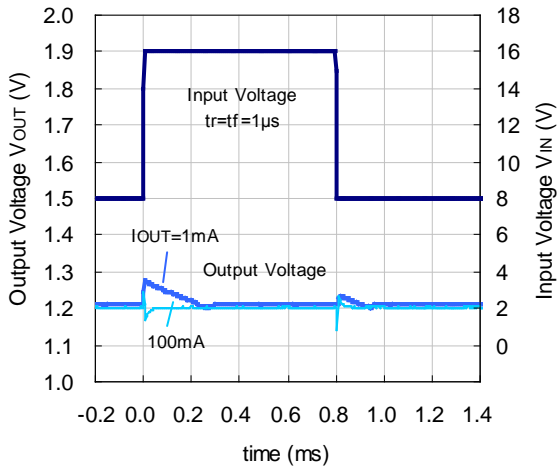


# R1513S

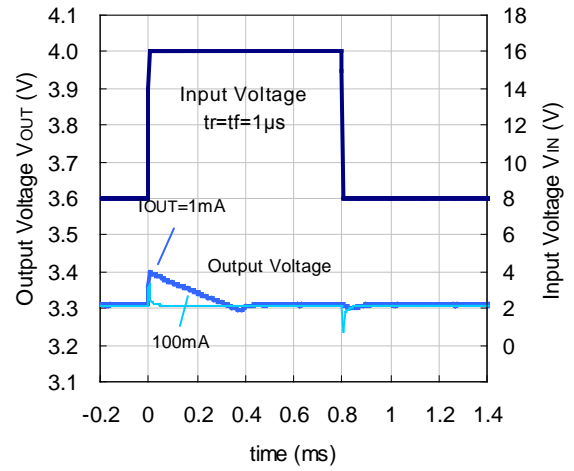
NO.JA-321-160119

## 10) Input Transient Response ( $T_a = 25^\circ\text{C}$ , $C_2 = 4.7\mu\text{F}$ )

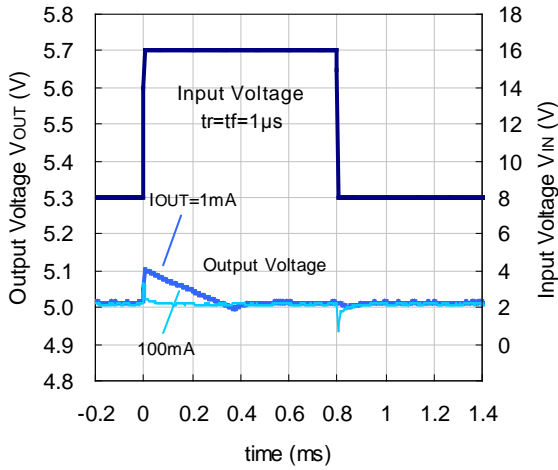
### R1513S121B/D



### R1513S331B/D

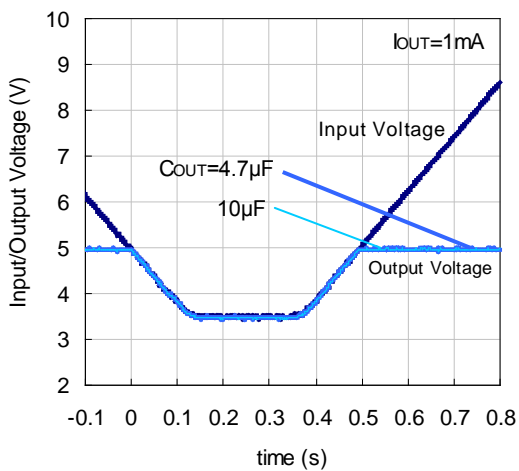


### R1513S501B/D



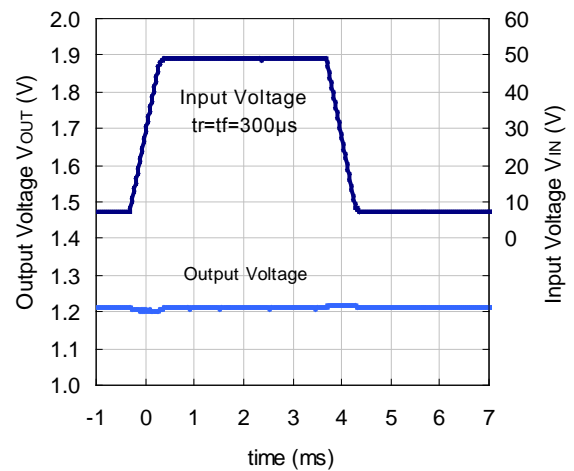
## 11) Cranking ( $T_a = -18^\circ\text{C}$ )

### R1513S501B/D

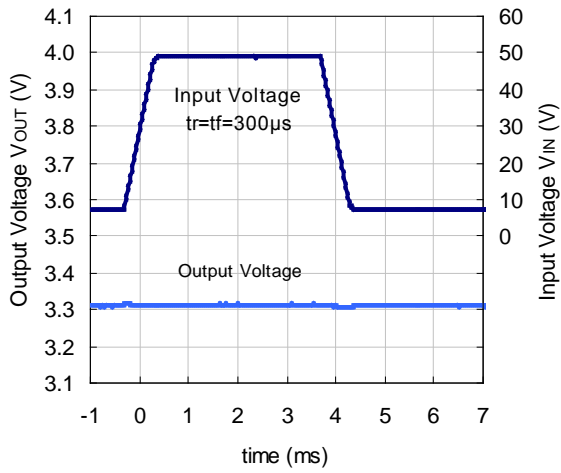


## 12) Load Dumping ( $T_a = 25^\circ\text{C}$ , $C_2 = 4.7\mu\text{F}$ )

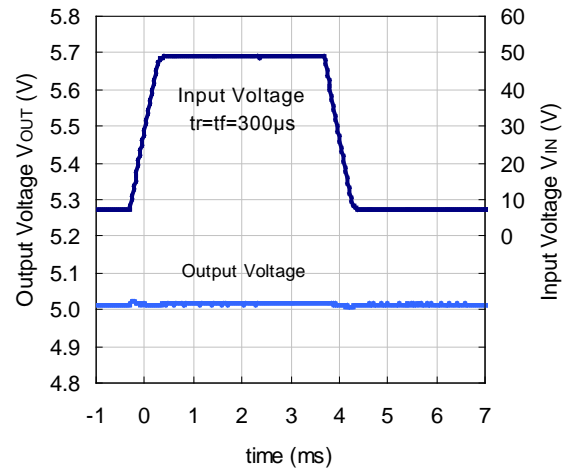
### R1513S121B/D



R1513S331B/D

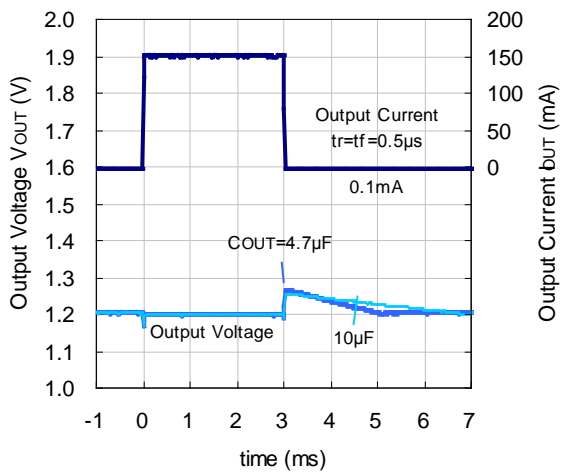


R1513S501B/D

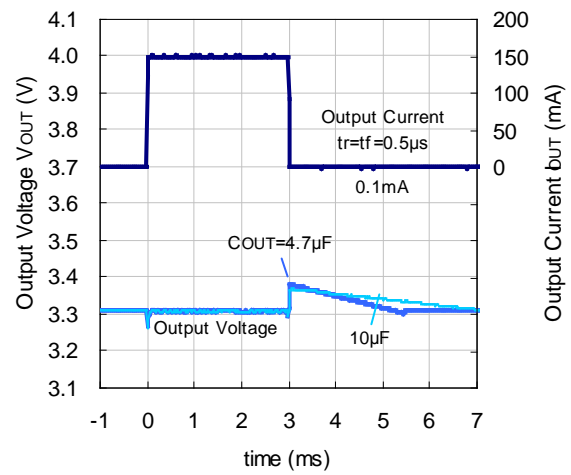


13) Load Transient Response ( $T_a = 25^\circ C$ )

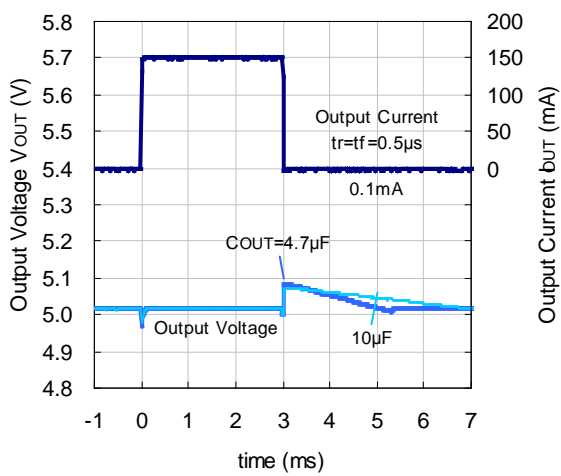
R1513S121B/D



R1513S331B/D



R1513S501B/D

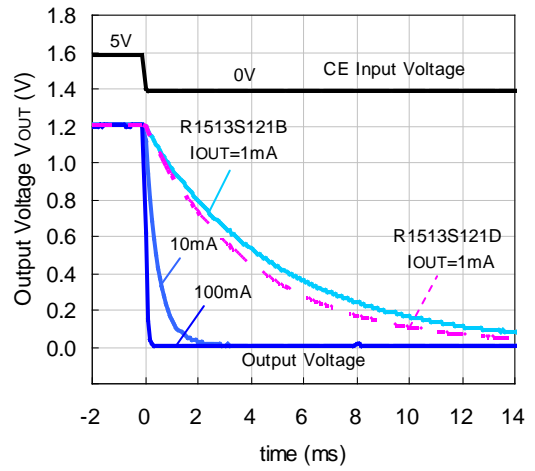
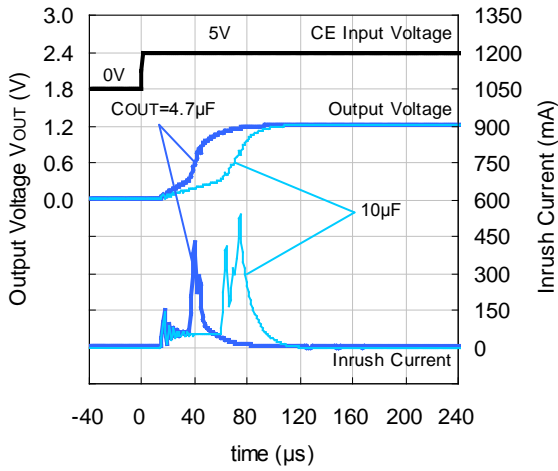


# R1513S

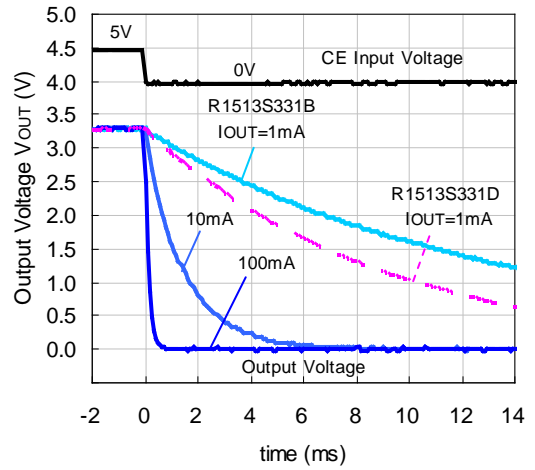
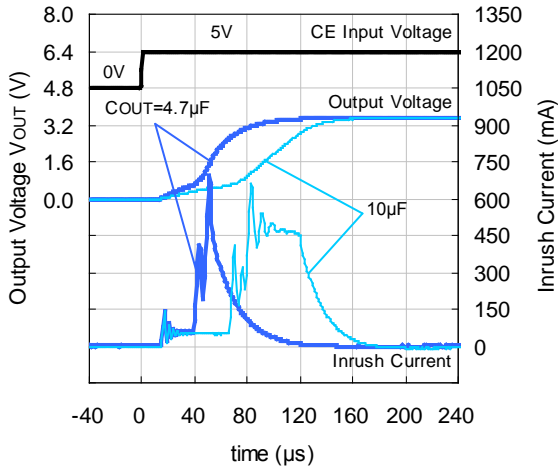
NO.JA-321-160119

## 14) CE Transient Response ( $T_a = 25^\circ\text{C}$ )

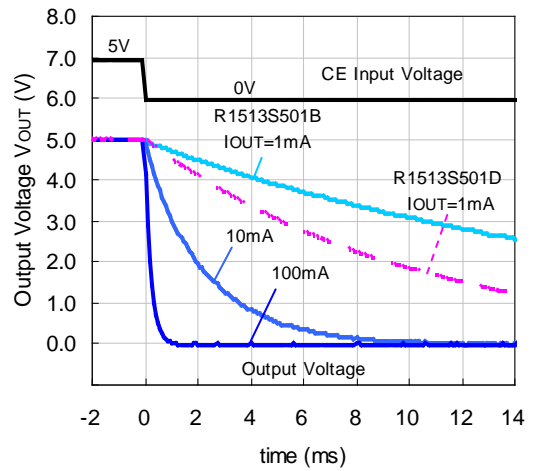
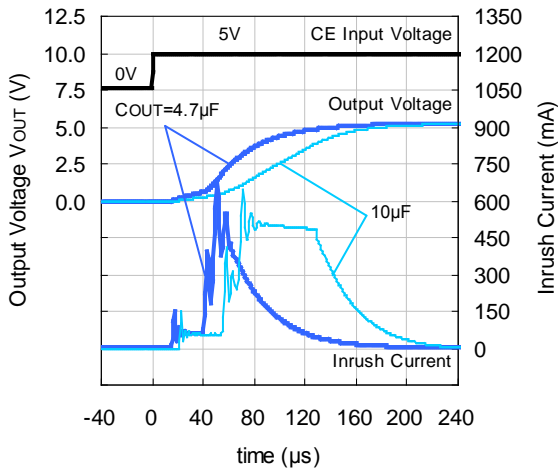
### R1513S121B/D ( $V_{IN} = 3.5\text{ V}$ )



### R1513S331B/D ( $V_{IN} = 4.3\text{ V}$ )

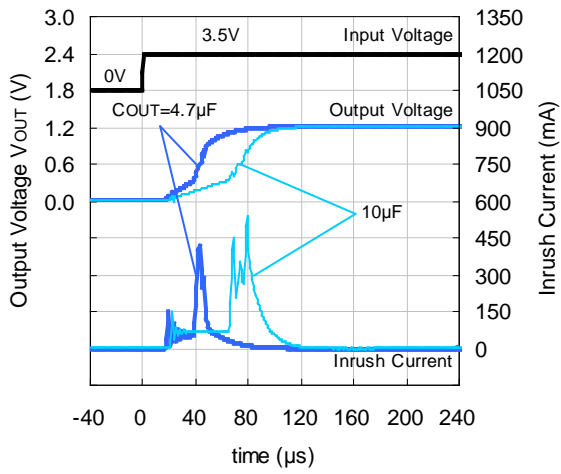


### R1513S501B/D ( $V_{IN} = 6.0\text{ V}$ )

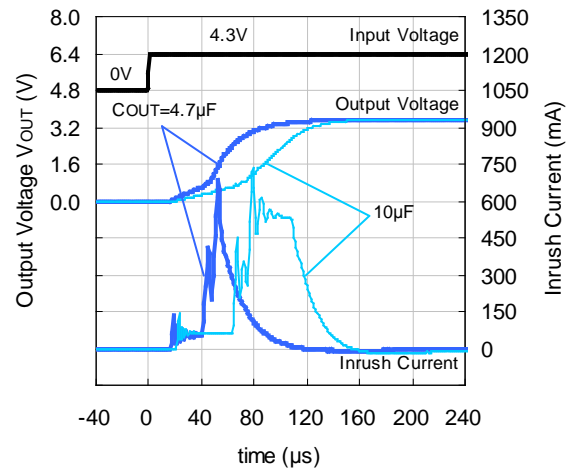


15) Power-on Transient Response ( $T_a = 25^\circ\text{C}$ ,  $V_{CE} = 5\text{ V}$ )

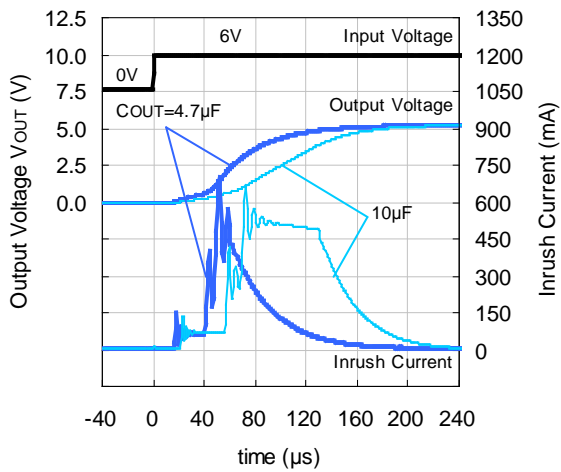
R1513S121B/D



R1513S331B/D

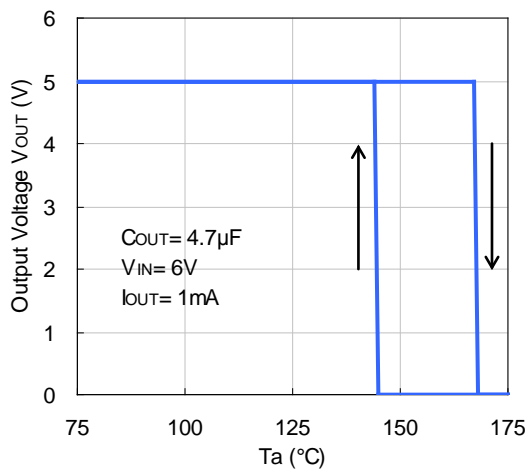


R1513S501B/D



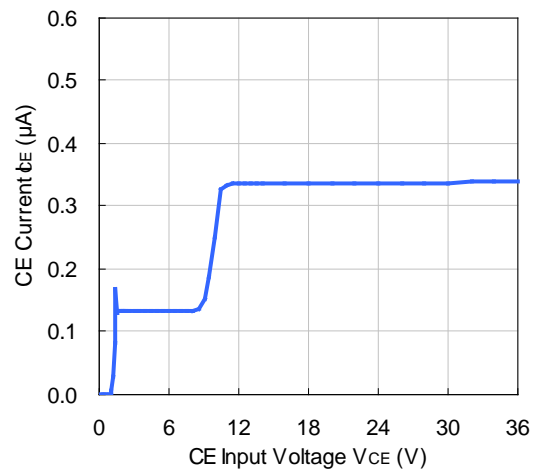
16) Thermal Shutdown

R1513S501B/D



17) CE Pin Current vs. CE Pin Voltage ( $T_a = 25^\circ\text{C}$ )

R1513Sxx1B/D

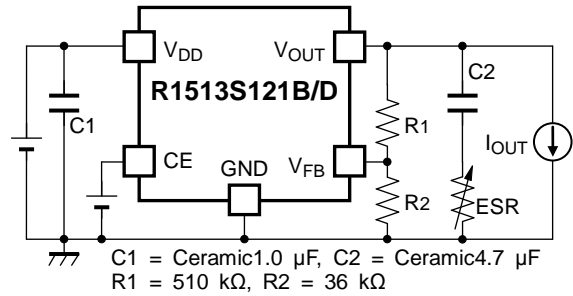
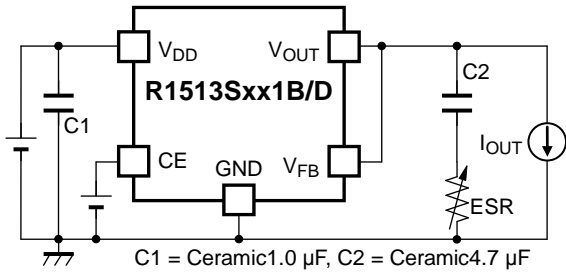


# R1513S

NO.JA-321-160119

## Equivalent Series Resistance (ESR) vs. Output Current

It is recommended that a ceramic type capacitor be used for this device. However, other types of capacitors having lower ESR can also be used. The relation between the output current ( $I_{OUT}$ ) and the ESR of output capacitor is shown below.



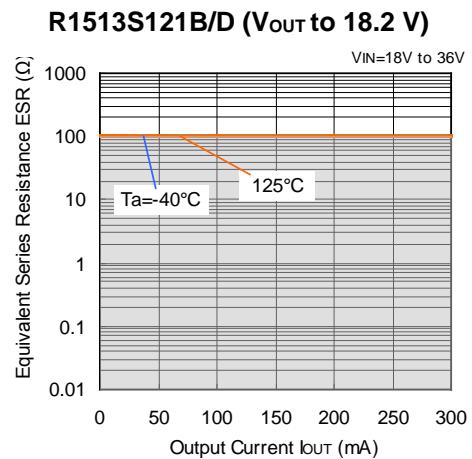
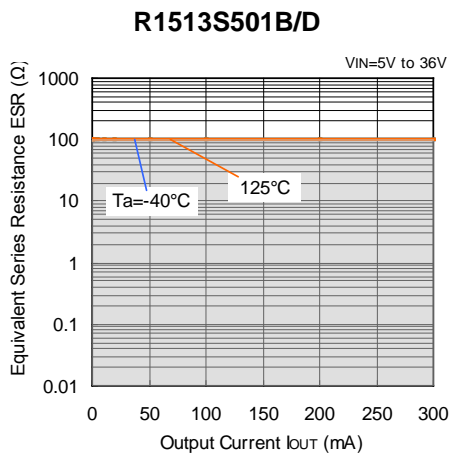
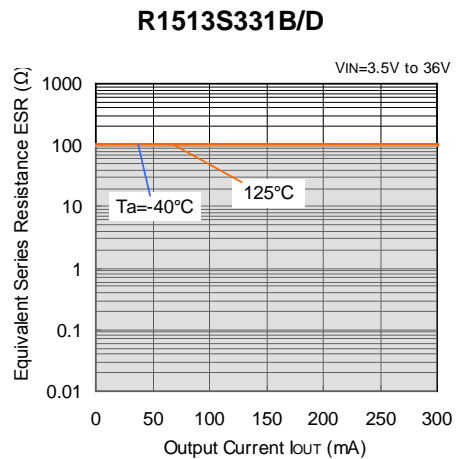
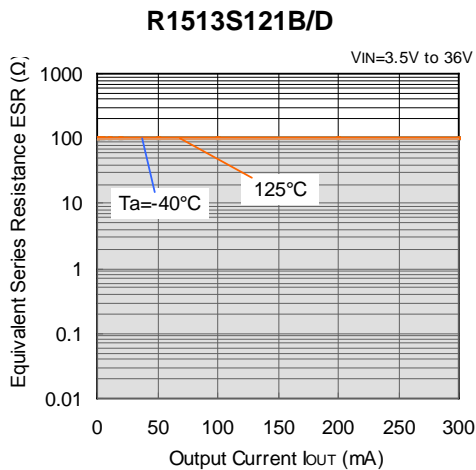
### Measurement Conditions

Frequency Band: 10 Hz to 2 MHz

Ambient Temperature:  $-40^{\circ}\text{C}$  to  $125^{\circ}\text{C}$

Hatched Area: Noise level below 40  $\mu$ V (average)

Capacitor: C1 = 1.0  $\mu$ F Ceramic Capacitor, C2 = 4.7  $\mu$ F Ceramic Capacitor (C4532X7S1H685K)





1. The products and the product specifications described in this document are subject to change or discontinuation of production without notice for reasons such as improvement. Therefore, before deciding to use the products, please refer to Ricoh sales representatives for the latest information thereon.
2. The materials in this document may not be copied or otherwise reproduced in whole or in part without prior written consent of Ricoh.
3. Please be sure to take any necessary formalities under relevant laws or regulations before exporting or otherwise taking out of your country the products or the technical information described herein.
4. The technical information described in this document shows typical characteristics of and example application circuits for the products. The release of such information is not to be construed as a warranty of or a grant of license under Ricoh's or any third party's intellectual property rights or any other rights.
5. The products listed in this document are intended and designed for use as general electronic components in standard applications (office equipment, telecommunication equipment, measuring instruments, consumer electronic products, amusement equipment etc.). Those customers intending to use a product in an application requiring extreme quality and reliability, for example, in a highly specific application where the failure or misoperation of the product could result in human injury or death (aircraft, spacevehicle, nuclear reactor control system, traffic control system, automotive and transportation equipment, combustion equipment, safety devices, life support system etc.) should first contact us.
6. We are making our continuous effort to improve the quality and reliability of our products, but semiconductor products are likely to fail with certain probability. In order to prevent any injury to persons or damages to property resulting from such failure, customers should be careful enough to incorporate safety measures in their design, such as redundancy feature, fire containment feature and fail-safe feature. We do not assume any liability or responsibility for any loss or damage arising from misuse or inappropriate use of the products.
7. Anti-radiation design is not implemented in the products described in this document.
8. Please contact Ricoh sales representatives should you have any questions or comments concerning the products or the technical information.



**Ricoh is committed to reducing the environmental loading materials in electrical devices with a view to contributing to the protection of human health and the environment.**

Ricoh has been providing RoHS compliant products since April 1, 2006 and Halogen-free products since April 1, 2012.

**RICOH** RICOH ELECTRONIC DEVICES CO., LTD.

<http://www.e-devices.ricoh.co.jp/en/>

#### Sales & Support Offices

##### **RICOH ELECTRONIC DEVICES CO., LTD.**

**Higashi-Shinagawa Office (International Sales)**  
3-32-3, Higashi-Shinagawa, Shinagawa-ku, Tokyo 140-8655, Japan  
Phone: +81-3-5479-2857 Fax: +81-3-5479-0502

##### **RICOH EUROPE (NETHERLANDS) B.V.**

**Semiconductor Support Centre**  
Prof. W.H. Keesomlaan 1, 1183 DJ Amstelveen, The Netherlands  
Phone: +31-20-5474-309

##### **RICOH INTERNATIONAL B.V. - German Branch**

**Semiconductor Sales and Support Centre**  
Oberrather Strasse 6, 40472 Düsseldorf, Germany  
Phone: +49-211-6546-0

##### **RICOH ELECTRONIC DEVICES KOREA CO., LTD.**

3F, Haesung Bldg, 504, Teheran-ro, Gangnam-gu, Seoul, 135-725, Korea  
Phone: +82-2-2135-5700 Fax: +82-2-2051-5713

##### **RICOH ELECTRONIC DEVICES SHANGHAI CO., LTD.**

Room 403, No.2 Building, No.690 Bibo Road, Pu Dong New District, Shanghai 201203, People's Republic of China  
Phone: +86-21-5027-3200 Fax: +86-21-5027-3299

##### **RICOH ELECTRONIC DEVICES CO., LTD.**

**Taipei office**  
Room 109, 10F-1, No.51, Hengyang Rd., Taipei City, Taiwan (R.O.C.)  
Phone: +886-2-2313-1621/1622 Fax: +886-2-2313-1623

# Mouser Electronics

Authorized Distributor

Click to View Pricing, Inventory, Delivery & Lifecycle Information:

## Ricoh Electronics:

[R1513S501D-E2-FE](#) [R1513S121B-E2-FE](#) [R1513S181B-E2-FE](#) [R1513S501B-E2-FE](#) [R1513S151B-E2-FE](#)  
[R1513S331B-E2-FE](#) [R1513S181D-E2-FE](#)



Компания «Океан Электроники» предлагает заключение долгосрочных отношений при поставках импортных электронных компонентов на взаимовыгодных условиях!

Наши преимущества:

- Поставка оригинальных импортных электронных компонентов напрямую с производств Америки, Европы и Азии, а так же с крупнейших складов мира;
- Широкая линейка поставок активных и пассивных импортных электронных компонентов (более 30 млн. наименований);
- Поставка сложных, дефицитных, либо снятых с производства позиций;
- Оперативные сроки поставки под заказ (от 5 рабочих дней);
- Экспресс доставка в любую точку России;
- Помощь Конструкторского Отдела и консультации квалифицированных инженеров;
- Техническая поддержка проекта, помощь в подборе аналогов, поставка прототипов;
- Поставка электронных компонентов под контролем ВП;
- Система менеджмента качества сертифицирована по Международному стандарту ISO 9001;
- При необходимости вся продукция военного и аэрокосмического назначения проходит испытания и сертификацию в лаборатории (по согласованию с заказчиком);
- Поставка специализированных компонентов военного и аэрокосмического уровня качества (Xilinx, Altera, Analog Devices, Intersil, Interpoint, Microsemi, Actel, Aeroflex, Peregrine, VPT, Syfer, Eurofarad, Texas Instruments, MS Kennedy, Miteq, Cobham, E2V, MA-COM, Hittite, Mini-Circuits, General Dynamics и др.);

Компания «Океан Электроники» является официальным дистрибьютором и эксклюзивным представителем в России одного из крупнейших производителей разъемов военного и аэрокосмического назначения «JONHON», а так же официальным дистрибьютором и эксклюзивным представителем в России производителя высокотехнологичных и надежных решений для передачи СВЧ сигналов «FORSTAR».



## JONHON

«JONHON» (основан в 1970 г.)

Разъемы специального, военного и аэрокосмического назначения:

(Применяются в военной, авиационной, аэрокосмической, морской, железнодорожной, горно- и нефтедобывающей отраслях промышленности)

«FORSTAR» (основан в 1998 г.)

ВЧ соединители, коаксиальные кабели, кабельные сборки и микроволновые компоненты:

(Применяются в телекоммуникациях гражданского и специального назначения, в средствах связи, РЛС, а так же военной, авиационной и аэрокосмической отраслях промышленности).



Телефон: 8 (812) 309-75-97 (многоканальный)

Факс: 8 (812) 320-03-32

Электронная почта: [ocean@oceanchips.ru](mailto:ocean@oceanchips.ru)

Web: <http://oceanchips.ru/>

Адрес: 198099, г. Санкт-Петербург, ул. Калинина, д. 2, корп. 4, лит. А