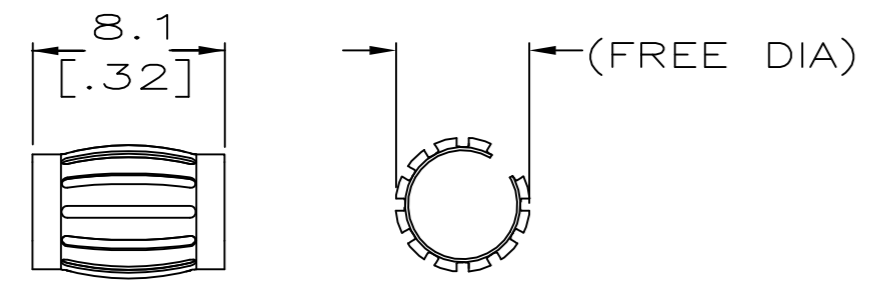
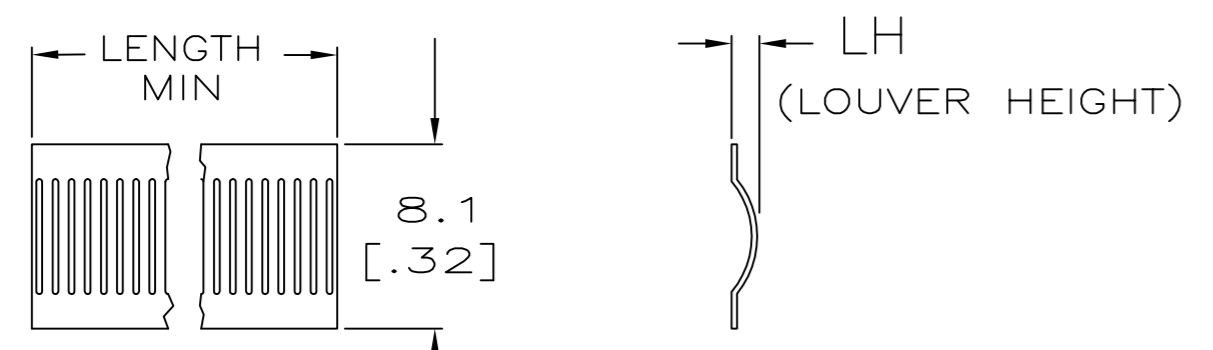


THIS DRAWING IS UNPUBLISHED. RELEASED FOR PUBLICATION  
 © COPYRIGHT - By - ALL RIGHTS RESERVED.

REVISIONS					
P	LTR	DESCRIPTION	DATE	DWN	APVD
S		REVISED PER ECO-15-011608	04NOV2015	NK	MZ
T		REVISED PER ECO-17-013721	16NOV2017	RS	MZ



STYLE B  
(MALE)



STYLE C  
(STRIP)

- 1 FINISH-SILVER PLATE 200 uIN MIN THICK.
- 2 FINISH-NICKEL PLATE 40 uIN MIN THICK.
- 3 FINISH-GOLD PLATE 10 uIN MIN THICK.
- 4 FINISH-GOLD PLATE 50 uIN MIN THICK.
- 5 FINISH-CADMIUM PLATE 300 uIN MIN THICK.
- 6 FINISH-NICKEL PLATE 100 uIN MIN THICK.
- 7 FINISH-TIN PLATE 300 uIN MIN THICK.
- 8
- 9
- 10
- 11 PLATING NOTES ARE TO BE INTERPRETED AS FOLLOWS, 6-8 AS 6 OVER 8.
- 12 PRODUCT IS SOLD BY THE FOOT.
- 13 12 FOOT STRIP WOUND TO A ONE INCH INSIDE DIAMETER.
- 14 MATERIAL-BeCu (CDA172).
- 15 MATERIAL-STAINLESS STEEL.
- 16 CUT LENGTH 508.0 [20.00] APPROXIMATELY 714 LOUVERS.
- 17 BAND WIDTH .310±.005 FOR P/N 6-192042-6.
- 18 FINISH - GOLD PLATE 30uIN MIN THICK.
- 19 OVERLAPPED WITH GAP.
- 20 OBSOLETE PARTS: OBSOLETE CIS STREAMLINING PER D.RENAUD/D.SINISI
- 21 PRILIMINARY PART

QTY	DESCRIPTION	REF	PLATING	MAT'L THK	REF	PART NO.
20	OBSOLETE					
	[.022] -- B [.40] 14 9.5 [.375] 36 3-2 0.20 [.008]	04133				4-192042-7
	[.022] -- B [.40] 14 9.5 [.375] 36 1-2 0.15 [.006]	04054				4-192042-6
	[.022] -- B [.40] 14 9.5 [.375] 36 5 0.15 [.006]	04100				4-192042-5
	[.022] -- UNPL [.40] 14 9.5 [.375] 36 UNPL 0.15 [.006]	04156				4-192042-4
	[.022] -- UNPL [.40] 14 9.5 [.375] 36 UNPL 0.15 [.006]	04101				4-192042-3
	[.024] -- B [.30] 14 7.1 [.280] 26 3-2 0.15 [.006]	04132				4-192042-2
	[.024] -- UNPL [.30] 14 7.1 [.280] 26 UNPL 0.15 [.006]	04131				4-192042-1
	[.024] -- B [.30] 14 7.1 [.280] 26 3-2 0.15 [.006]	04048				4-192042-0
	[.024] -- UNPL [.30] 14 7.1 [.280] 26 UNPL 0.15 [.006]	04173				3-192042-9
	[.026] -- B [.23] 14 5.5 [.216] 19 6 0.20 [.008]	04043				3-192042-8
	[.026] -- B [.23] 14 5.5 [.216] 19 3-2 0.20 [.008]	04135				3-192042-7
	[.026] -- UNPL [.23] 14 5.5 [.216] 19 1-2 0.20 [.008]	04039				3-192042-6
	[.032] -- B [.20] 14 4.7 [.185] 15 3-2 0.15 [.006]	04134				3-192042-5
	[.032] -- UNPL [.20] 14 4.7 [.185] 15 UNPL 0.15 [.006]	04034				3-192042-4
	[.022] -- B [.17] 14 4.0 [.157] 13 4-2 0.15 [.006]	04033				3-192042-3
	[.022] -- B [.17] 14 4.0 [.157] 13 1-2 0.15 [.006]	04032				3-192042-2
	[.022] -- B [.17] 14 4.0 [.157] 13 6 0.15 [.006]	04063				3-192042-1
	[.022] -- B [.17] 14 4.0 [.157] 13 1-2 0.15 [.006]	04155				2-192042-9
	[.022] -- B [.17] 14 4.0 [.157] 13 6 0.15 [.006]	04088				2-192042-8
	[.022] -- B [.17] 14 4.0 [.157] 13 1-2 0.15 [.006]	04087				2-192042-7
	[.022] -- UNPL [.17] 14 4.0 [.157] 13 UNPL 0.15 [.006]	04089				2-192042-6
	[.022] -- B [.15] 14 3.5 [.138] 12 3-2 0.15 [.006]	04088				2-192042-5
	[.022] -- B [.14] 14 3.0 [.118] 10 3-2 0.15 [.006]	04026				2-192042-4
	[.022] -- UNPL [.14] 14 3.0 [.118] 10 UNPL 0.15 [.006]	04022				2-192042-3
	[.022] -- B [.13] 14 2.8 [.110] 10 3-2 0.12 [.005]	04021				2-192042-2
	[.026] -- B [.13] 14 2.5 [.098] 9 3-2 0.15 [.006]	04018				2-192042-1
	[.022] -- B [.13] 14 2.3 [.091] 9 3-2 0.20 [.008]	04016				2-192042-0
	[.022] -- B [.11] 14 2.0 [.080] 6 6 0.15 [.006]	04014				1-192042-9
	[.022] -- UNPL [.11] 14 2.0 [.080] 6 3-2 0.15 [.006]	04012				1-192042-8
	[.026] -- B [.11] 14 2.0 [.080] 6 3-2 0.12 [.005]	04011				192042 -7
	[.026] -- B [.11] 14 2.0 [.080] 6 6 0.12 [.005]	04152				1-192042-6
	[.020] -- B [.10] 14 2.0 [.080] 6 6 0.10 [.004]	04171				1-192042-5
	[.020] -- UNPL [.10] 14 2.0 [.080] 6 UNPL 0.10 [.004]	04219				1-192042-4
	[.026] NOTE 13 C -- 14 -- -- 3-2 0.12 [.005]	04153				1-192042-3
	[.028] NOTE 12 C -- 14 -- -- 3-2 0.20 [.008]	04150				1-192042-2
	[.028] NOTE 12 C -- 14 -- -- UNPL 0.20 [.008]	04151				1-192042-1
	[.028] NOTE 12 C -- 14 -- -- 3-2 0.12 [.005]	04175				1-192042-0
	[.028] NOTE 12 C -- 14 -- -- 1-2 0.20 [.008]	04127				192042-9
	[.026] NOTE 12 C -- 14 -- -- UNPL 0.20 [.008]	04160				192042-8
	[.026] NOTE 12 C -- 14 -- -- 3-2 0.15 [.006]	04161				192042-7
	[.026] NOTE 12 C -- 14 -- -- 1-2 0.15 [.006]	04003				192042-6
	[.026] NOTE 12 C -- 14 -- -- UNPL 0.15 [.006]	04217				192042-5
	[.026] NOTE 12 C -- 14 -- -- UNPL 0.15 [.006]	04085				192042-4
	[.026] NOTE 12 C -- 14 -- -- 1-2 0.12 [.005]	04141				192042-3
	[.026] NOTE 12 C -- 14 -- -- UNPL 0.12 [.005]					192042-2
	[.016] NOTE 12 C -- 15 -- -- UNPL 0.12 [.005]	04181				192042-1

LH	LENGTH	STYLE	(FREE DIA)	MAT'L NOTE	MATING HOLE φ REF	NUM LOUV	PLATING	MAT'L THK	REF	PART NO.

THIS DRAWING IS A CONTROLLED DOCUMENT.

DIMENSIONS: mm

TOLERANCES UNLESS OTHERWISE SPECIFIED:

0 PLC ± -

1 PLC ± -

2 PLC ± 0.5[.02]

3 PLC ± 0.25[.010]

4 PLC ± -

ANGLES ± -

FINISH -

APVD: RA JAYNE 06-12-92

CHK: J.TURNER 07-21-93

APVD: S.SIEGRIST 07-21-93

PRODUCT SPEC

APPLICATION SPEC

WEIGHT -

CUSTOMER DRAWING

**STE** TE Connectivity

NAME: CONTACT BAND, MALE

SIZE: A2 CAGE CODE: 00779 DRAWING NO: C=192042 RESTRICTED TO: -

SCALE: 1:1 SHEET: 1 of 2 REV: T

4

3

2

1

THIS DRAWING IS UNPUBLISHED. RELEASED FOR PUBLICATION -,-.  
© COPYRIGHT - By - ALL RIGHTS RESERVED.

REVISIONS				
P	LTR	DESCRIPTION	DATE	APVD
-	-	SEE SHEET 1	-	-

---	---	---	---	---	---	---	---	---	---	---
---	---	---	---	---	---	---	---	---	---	---
---	---	---	---	---	---	---	---	---	---	---
---	---	---	---	---	---	---	---	---	---	---
---	---	---	---	---	---	---	---	---	---	---
---	---	---	---	---	---	---	---	---	---	---
---	---	---	---	---	---	---	---	---	---	---
---	---	---	---	---	---	---	---	---	---	---
---	---	---	---	---	---	---	---	---	---	---
---	---	---	---	---	---	---	---	---	---	---
---	---	---	---	---	---	---	---	---	---	---
---	---	---	---	---	---	---	---	---	---	---
---	---	---	---	---	---	---	---	---	---	---
---	---	---	---	---	---	---	---	---	---	---
---	---	---	---	---	---	---	---	---	---	---
---	---	---	---	---	---	---	---	---	---	---
---	---	---	---	---	---	---	---	---	---	---
---	---	---	---	---	---	---	---	---	---	---
---	---	---	---	---	---	---	---	---	---	---
---	---	---	---	---	---	---	---	---	---	---
---	---	---	---	---	---	---	---	---	---	---
---	---	---	---	---	---	---	---	---	---	---
---	---	---	---	---	---	---	---	---	---	---
---	---	---	---	---	---	---	---	---	---	---
---	---	---	---	---	---	---	---	---	---	---
---	---	---	---	---	---	---	---	---	---	---
---	---	---	---	---	---	---	---	---	---	---
---	---	---	---	---	---	---	---	---	---	---
---	---	---	---	---	---	---	---	---	---	---
---	---	---	---	---	---	---	---	---	---	---
---	---	---	---	---	---	---	---	---	---	---
---	---	---	---	---	---	---	---	---	---	---

17	OBSOLETE		B	[.17]	14	4.00[.157]	13	7	0.15[.006]	--	6-192042-9
	OBSOLETE		B	19	14	9.53[.375]	35	18	.006	--	6-192042-8
	OBSOLETE		B	19	14	9.53[.375]	35	7	.006	--	6-192042-7
	OBSOLETE		B	[.34]	14	9.34[.368]	30	UNPL	.004	--	6-192042-6
20	OBSOLETE	NOTE 16	B	--	14	6.4[.250]	--	1-2	.006	--	6-192042-5
	OBSOLETE	NOTE 15	C	--	14	--	--	PREPL	.006	--	6-192042-4
			B	[.15]	14	3.5[.138]	12	UNPL	.006	--	6-192042-3
			B	[.13]	14	2.8[.110]	9	UNPL	.005	--	6-192042-2
			B	[.13]	14	2.5[.098]	9	UNPL	.006	--	6-192042-1
			B	[.13]	14	2.0[.091]	9	UNPL	.008	--	6-192042-0
			B	[.11]	14	2.0[.080]	6	UNPL	.006	--	5-192042-9
		NOTE 13	C	--	14	--	--	UNPL	.005	--	5-192042-8
			B	[.23]	14	5.5[.216]	19	UNPL	.008	--	5-192042-7
20	OBSOLETE		B	[.11]	14	--	6	1-2	.005	04231	5-192042-6
											5-192042-5
										04167	5-192042-4
										04214	5-192042-3
										04059	5-192042-2
										04158	5-192042-1
										04057	5-192042-0
										04182	4-192042-9
										04122	4-192042-8

LH	LENGTH	STYLE	(FREE DIA)	MAT'L	MATING HOLE	REF	NUM LOUV	PLATING	MAT'L THK	REF	PART NO.
	[.024]		B	[.49]	14	12.7[.500]	46	UNPL	.006	04122	4-192042-8

THIS DRAWING IS A CONTROLLED DOCUMENT.

DWN RA JAYNE 06-12-92  
CHK J.TURNER 07-21-93  
APVD S.SIEGRIST 07-21-93  
PRODUCT SPEC  
APPLICATION SPEC

0 PLC ± -  
1 PLC ± -  
2 PLC ± 0.5[.02]  
3 PLC ± 0.25[.010]  
4 PLC ± -  
ANGLES ± -  
FINISH -

**TE** TE Connectivity

NAME CONTACT BAND, MALE

SIZE A2 CAGE CODE 00779 DRAWING NO C=192042 RESTRICTED TO -

SCALE 1:1 SHEET 2 OF 2 REV T

CUSTOMER DRAWING

D

D

C

C

B

B

A

A

192042

Компания «Океан Электроники» предлагает заключение долгосрочных отношений при поставках импортных электронных компонентов на взаимовыгодных условиях!

Наши преимущества:

- Поставка оригинальных импортных электронных компонентов напрямую с производств Америки, Европы и Азии, а так же с крупнейших складов мира;
- Широкая линейка поставок активных и пассивных импортных электронных компонентов (более 30 млн. наименований);
- Поставка сложных, дефицитных, либо снятых с производства позиций;
- Оперативные сроки поставки под заказ (от 5 рабочих дней);
- Экспресс доставка в любую точку России;
- Помощь Конструкторского Отдела и консультации квалифицированных инженеров;
- Техническая поддержка проекта, помощь в подборе аналогов, поставка прототипов;
- Поставка электронных компонентов под контролем ВП;
- Система менеджмента качества сертифицирована по Международному стандарту ISO 9001;
- При необходимости вся продукция военного и аэрокосмического назначения проходит испытания и сертификацию в лаборатории (по согласованию с заказчиком);
- Поставка специализированных компонентов военного и аэрокосмического уровня качества (Xilinx, Altera, Analog Devices, Intersil, Interpoint, Microsemi, Actel, Aeroflex, Peregrine, VPT, Syfer, Eurofarad, Texas Instruments, MS Kennedy, Miteq, Cobham, E2V, MA-COM, Hittite, Mini-Circuits, General Dynamics и др.);

Компания «Океан Электроники» является официальным дистрибьютором и эксклюзивным представителем в России одного из крупнейших производителей разъемов военного и аэрокосмического назначения «JONHON», а так же официальным дистрибьютором и эксклюзивным представителем в России производителя высокотехнологичных и надежных решений для передачи СВЧ сигналов «FORSTAR».



## JONHON

«JONHON» (основан в 1970 г.)

Разъемы специального, военного и аэрокосмического назначения:

(Применяются в военной, авиационной, аэрокосмической, морской, железнодорожной, горно- и нефтедобывающей отраслях промышленности)

«FORSTAR» (основан в 1998 г.)

ВЧ соединители, коаксиальные кабели, кабельные сборки и микроволновые компоненты:

(Применяются в телекоммуникациях гражданского и специального назначения, в средствах связи, РЛС, а так же военной, авиационной и аэрокосмической отраслях промышленности).



Телефон: 8 (812) 309-75-97 (многоканальный)

Факс: 8 (812) 320-03-32

Электронная почта: [ocean@oceanchips.ru](mailto:ocean@oceanchips.ru)

Web: <http://oceanchips.ru/>

Адрес: 198099, г. Санкт-Петербург, ул. Калинина, д. 2, корп. 4, лит. А