

The S-818 Series is a positive voltage regulator developed by CMOS technology and featured by low dropout voltage, high output voltage accuracy and low current consumption.

Built-in low on-resistance transistor provides low dropout voltage and large output current. A ceramic capacitor of 2  $\mu\text{F}$  or more can be used as an output capacitor. An ON/OFF circuit ensures long battery life. The SOT-23-5 miniaturized package and the SOT-89-5 package are recommended for configuring portable devices and large output current applications, respectively.

### ■ Features

- Output voltage: 2.0 V to 6.0 V, selectable in 0.1 V step
- Output voltage accuracy:  $\pm 2.0\%$
- Dropout voltage: 170 mV typ. (5.0 V output product,  $I_{\text{OUT}} = 60 \text{ mA}$ )
- Current consumption: During operation: 30  $\mu\text{A}$  typ., 40  $\mu\text{A}$  max.  
During power-off: 100 nA typ., 500 nA max.
- Output current: Possible to output 200 mA (3.0 V output product,  $V_{\text{IN}} = 4 \text{ V}$ )\*<sup>1</sup>  
Possible to output 300 mA (5.0 V output product,  $V_{\text{IN}} = 6 \text{ V}$ )\*<sup>1</sup>
- Output capacitor: A ceramic capacitor of 2  $\mu\text{F}$  or more can be used.
- Built-in ON/OFF circuit: Ensures long battery life.
- Operation temperature range:  $T_a = -40^\circ\text{C}$  to  $+85^\circ\text{C}$
- Lead-free, Sn 100%, halogen-free\*<sup>2</sup>

\*1. Attention should be paid to the power dissipation of the package when the output current is large.

\*2. Refer to "■ Product Name Structure" for details.

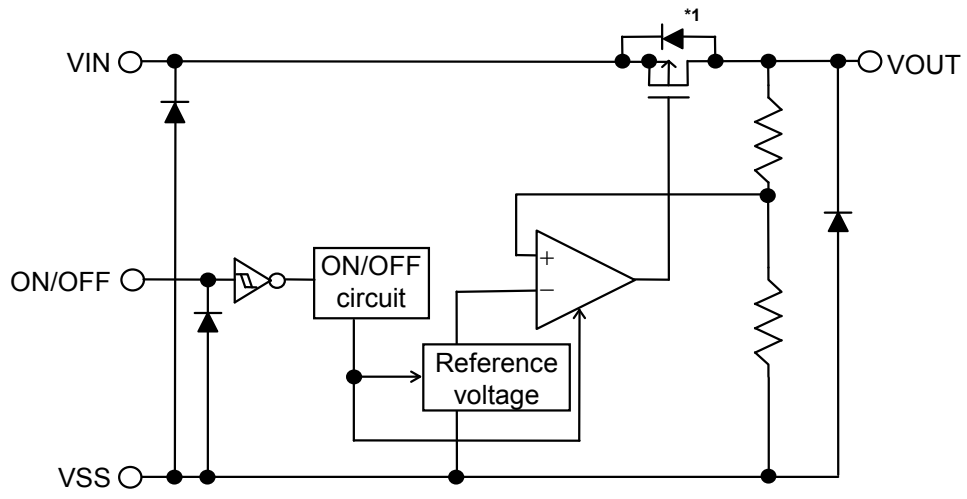
### ■ Applications

- Constant-voltage power supply for battery-powered device, personal communication device and home electric appliance

### ■ Packages

- SOT-23-5
- SOT-89-5

■ Block Diagram

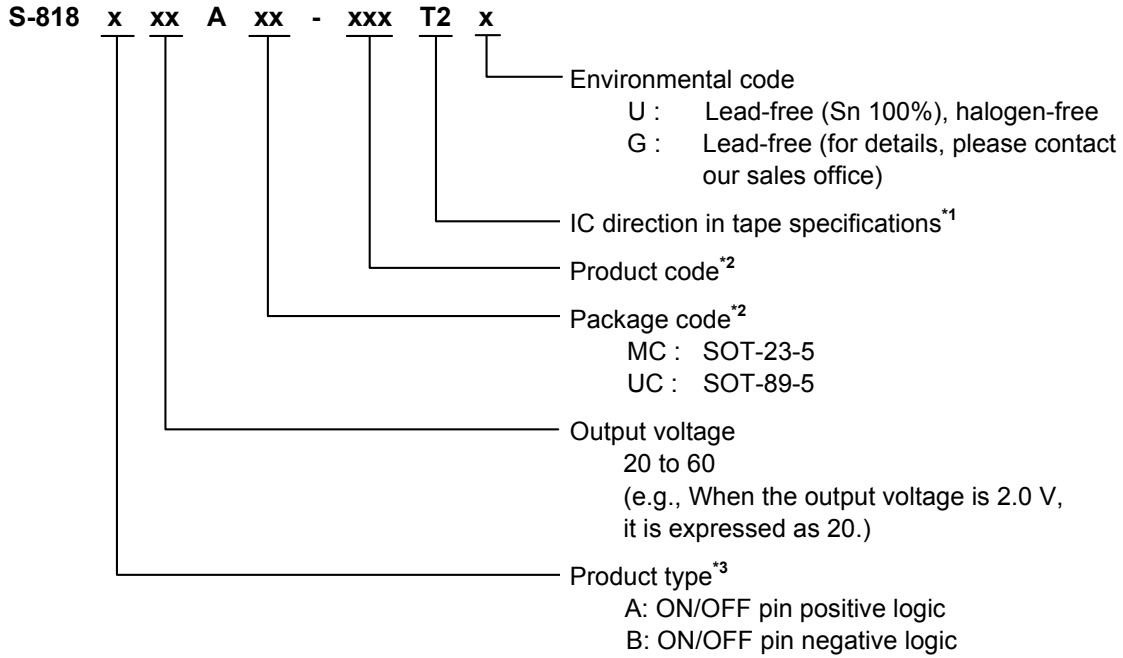


\*1. Parasitic diode

Figure 1

■ Product Name Structure

1. Product name



\*1. Refer to the tape drawing.  
 \*2. Refer to the "Table 1" under the "3. Product name list".  
 \*3. Refer to "3. ON/OFF pin" in the "■ Operation".

2. Package

| Package Name | Drawing Code |              |              |
|--------------|--------------|--------------|--------------|
|              | Package      | Tape         | Reel         |
| SOT-23-5     | MP005-A-P-SD | MP005-A-C-SD | MP005-A-R-SD |
| SOT-89-5     | UP005-A-P-SD | UP005-A-C-SD | UP005-A-R-SD |

**3. Product name list**

**Table 1**

| Output Voltage | SOT-23-5           | SOT-89-5           |
|----------------|--------------------|--------------------|
| 2.0 V±2.0%     | S-818A20AMC-BGAT2x | S-818A20AUC-BGAT2x |
| 2.1 V±2.0%     | S-818A21AMC-BGBT2x | S-818A21AUC-BGBT2x |
| 2.2 V±2.0%     | S-818A22AMC-BGCT2x | S-818A22AUC-BGCT2x |
| 2.3 V±2.0%     | S-818A23AMC-BGDT2x | S-818A23AUC-BGDT2x |
| 2.4 V±2.0%     | S-818A24AMC-BGET2x | S-818A24AUC-BGET2x |
| 2.5 V±2.0%     | S-818A25AMC-BGFT2x | S-818A25AUC-BGFT2x |
| 2.6 V±2.0%     | S-818A26AMC-BGGT2x | S-818A26AUC-BGGT2x |
| 2.7 V±2.0%     | S-818A27AMC-BGHT2x | S-818A27AUC-BGHT2x |
| 2.8 V±2.0%     | S-818A28AMC-BGIT2x | S-818A28AUC-BGIT2x |
| 2.9 V±2.0%     | S-818A29AMC-BGJT2x | S-818A29AUC-BGJT2x |
| 3.0 V±2.0%     | S-818A30AMC-BGKT2x | S-818A30AUC-BGKT2x |
| 3.1 V±2.0%     | S-818A31AMC-BGLT2x | S-818A31AUC-BGLT2x |
| 3.2 V±2.0%     | S-818A32AMC-BGMT2x | S-818A32AUC-BGMT2x |
| 3.3 V±2.0%     | S-818A33AMC-BGNT2x | S-818A33AUC-BGNT2x |
| 3.4 V±2.0%     | S-818A34AMC-BGOT2x | S-818A34AUC-BGOT2x |
| 3.5 V±2.0%     | S-818A35AMC-BGPT2x | S-818A35AUC-BGPT2x |
| 3.6 V±2.0%     | S-818A36AMC-BGQT2x | S-818A36AUC-BGQT2x |
| 3.7 V±2.0%     | S-818A37AMC-BGRT2x | S-818A37AUC-BGRT2x |
| 3.8 V±2.0%     | S-818A38AMC-BGST2x | S-818A38AUC-BGST2x |
| 3.9 V±2.0%     | S-818A39AMC-BGTT2x | S-818A39AUC-BGTT2x |
| 4.0 V±2.0%     | S-818A40AMC-BGUT2x | S-818A40AUC-BGUT2x |
| 4.1 V±2.0%     | S-818A41AMC-BGVT2x | S-818A41AUC-BGVT2x |
| 4.2 V±2.0%     | S-818A42AMC-BGWT2x | S-818A42AUC-BGWT2x |
| 4.3 V±2.0%     | S-818A43AMC-BGXT2x | S-818A43AUC-BGXT2x |
| 4.4 V±2.0%     | S-818A44AMC-BGYT2x | S-818A44AUC-BGYT2x |
| 4.5 V±2.0%     | S-818A45AMC-BGZT2x | S-818A45AUC-BGZT2x |
| 4.6 V±2.0%     | S-818A46AMC-BHAT2x | S-818A46AUC-BHAT2x |
| 4.7 V±2.0%     | S-818A47AMC-BHBT2x | S-818A47AUC-BHBT2x |
| 4.8 V±2.0%     | S-818A48AMC-BHCT2x | S-818A48AUC-BHCT2x |
| 4.9 V±2.0%     | S-818A49AMC-BHDT2x | S-818A49AUC-BHDT2x |
| 5.0 V±2.0%     | S-818A50AMC-BHET2x | S-818A50AUC-BHET2x |
| 5.1 V±2.0%     | S-818A51AMC-BHFT2x | S-818A51AUC-BHFT2x |
| 5.2 V±2.0%     | S-818A52AMC-BHGT2x | S-818A52AUC-BHGT2x |
| 5.3 V±2.0%     | S-818A53AMC-BHHT2x | S-818A53AUC-BHHT2x |
| 5.4 V±2.0%     | S-818A54AMC-BHIT2x | S-818A54AUC-BHIT2x |
| 5.5 V±2.0%     | S-818A55AMC-BHJT2x | S-818A55AUC-BHJT2x |
| 5.6 V±2.0%     | S-818A56AMC-BHKT2x | S-818A56AUC-BHKT2x |
| 5.7 V±2.0%     | S-818A57AMC-BHLT2x | S-818A57AUC-BHLT2x |
| 5.8 V±2.0%     | S-818A58AMC-BHMT2x | S-818A58AUC-BHMT2x |
| 5.9 V±2.0%     | S-818A59AMC-BHNT2x | S-818A59AUC-BHNT2x |
| 6.0 V±2.0%     | S-818A60AMC-BHOT2x | S-818A60AUC-BHOT2x |

**Remark 1.** Please contact our sales office for type B products.

**2.** x: G or U

**3.** Please select products of environmental code = U for Sn 100%, halogen-free products.

■ Pin Configurations

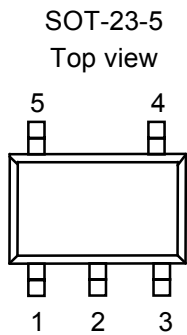


Figure 2

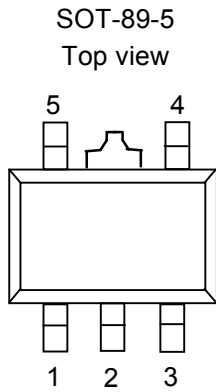


Figure 3

Table 2

| Pin No. | Symbol | Pin description    |
|---------|--------|--------------------|
| 1       | VIN    | Input voltage pin  |
| 2       | VSS    | GND pin            |
| 3       | ON/OFF | ON/OFF pin         |
| 4       | NC*1   | No connection      |
| 5       | VOU    | Output voltage pin |

\*1. The NC pin is electrically open.  
The NC pin can be connected to VIN pin or VSS pin.

Table 3

| Pin No. | Symbol | Pin description    |
|---------|--------|--------------------|
| 1       | VOU    | Output voltage pin |
| 2       | VSS    | GND pin            |
| 3       | NC*1   | No connection      |
| 4       | ON/OFF | ON/OFF pin         |
| 5       | VIN    | Input voltage pin  |

\*1. The NC pin is electrically open.  
The NC pin can be connected to VIN pin or VSS pin.

■ **Absolute Maximum Ratings**

**Table 4**

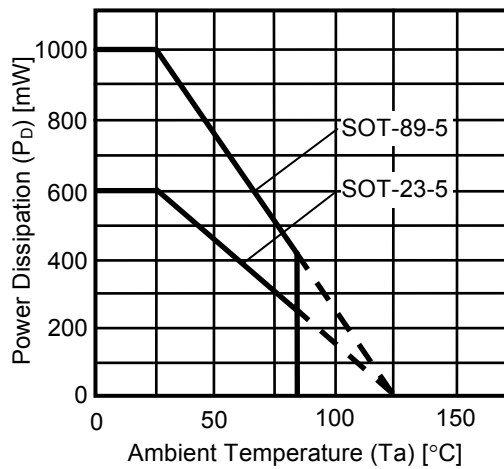
(Ta=25°C unless otherwise specified)

| Item                          | Symbol       | Absolute Maximum Rating         | Unit |
|-------------------------------|--------------|---------------------------------|------|
| Input voltage                 | $V_{IN}$     | $V_{SS}-0.3$ to $V_{SS}+12$     | V    |
|                               | $V_{ON/OFF}$ | $V_{SS}-0.3$ to $V_{SS}+12$     | V    |
| Output voltage                | $V_{OUT}$    | $V_{SS}-0.3$ to $V_{IN}+0.3$    | V    |
| Power dissipation             | $P_D$        | 250 (When not mounted on board) | mW   |
|                               |              | 600 <sup>*1</sup>               | mW   |
|                               |              | 500 (When not mounted on board) | mW   |
|                               |              | 1000 <sup>*1</sup>              | mW   |
| Operation ambient temperature | $T_{opr}$    | -40 to +85                      | °C   |
| Storage temperature           | $T_{stg}$    | -40 to +125                     | °C   |

\*1. When mounted on board  
 [Mounted on board]

- (1) Board size : 114.3 mm × 76.2 mm × t1.6 mm
- (2) Board name : JEDEC STANDARD51-7

**Caution** The absolute maximum ratings are rated values exceeding which the product could suffer physical damage. These values must therefore not be exceeded under any conditions.



**Figure 4 Power dissipation of package (When mounted on board)**

**LOW DROPOUT CMOS VOLTAGE REGULATOR**  
**S-818 Series**

Rev.3.1\_02

■ **Electrical Characteristics**

**Table 5**

(Ta=25°C unless otherwise specified)

| Item                                     | Symbol  | Condition  | Min.   | Typ.         | Max.                     | Unit          | Test circuit |   |
|--|---|--|--|--------------|--------------------------|---------------|--------------|---|
| Output voltage*1                         | $V_{OUT(E)}$  | $V_{IN}=V_{OUT(S)}+1\text{ V}$ , $I_{OUT}=30\text{ mA}$  | $V_{OUT(S)} \times 0.98$                         | $V_{OUT(S)}$ | $V_{OUT(S)} \times 1.02$ | V             | 1            |   |
| Output current*2                         | $I_{OUT}$   | $V_{OUT(S)}+1\text{ V} \leq V_{IN} \leq 10\text{ V}$   | $2.0\text{ V} \leq V_{OUT(S)} \leq 2.4\text{ V}$ | $100^{*5}$   | —                        | —             | mA           | 3 |
|  |   |  | $2.5\text{ V} \leq V_{OUT(S)} \leq 2.9\text{ V}$ | $150^{*5}$   | —                        | —             | mA           | 3 |
|  |   |  | $3.0\text{ V} \leq V_{OUT(S)} \leq 3.9\text{ V}$ | $200^{*5}$   | —                        | —             | mA           | 3 |
|  |   |  | $4.0\text{ V} \leq V_{OUT(S)} \leq 4.9\text{ V}$ | $250^{*5}$   | —                        | —             | mA           | 3 |
|  |   |  | $5.0\text{ V} \leq V_{OUT(S)} \leq 6.0\text{ V}$ | $300^{*5}$   | —                        | —             | mA           | 3 |
| Dropout voltage*3                        | $V_{drop}$  | $I_{OUT}=60\text{ mA}$   | $2.0\text{ V} \leq V_{OUT(S)} \leq 2.4\text{ V}$ | —            | 0.51                     | 0.87          | V            | 1 |
|  |   |  | $2.5\text{ V} \leq V_{OUT(S)} \leq 2.9\text{ V}$ | —            | 0.38                     | 0.61          | V            | 1 |
|  |   |  | $3.0\text{ V} \leq V_{OUT(S)} \leq 3.4\text{ V}$ | —            | 0.30                     | 0.44          | V            | 1 |
|  |   |  | $3.5\text{ V} \leq V_{OUT(S)} \leq 3.9\text{ V}$ | —            | 0.24                     | 0.33          | V            | 1 |
|  |   |  | $4.0\text{ V} \leq V_{OUT(S)} \leq 4.4\text{ V}$ | —            | 0.20                     | 0.26          | V            | 1 |
|  |   |  | $4.5\text{ V} \leq V_{OUT(S)} \leq 4.9\text{ V}$ | —            | 0.18                     | 0.22          | V            | 1 |
|  |   |  | $5.0\text{ V} \leq V_{OUT(S)} \leq 5.4\text{ V}$ | —            | 0.17                     | 0.21          | V            | 1 |
|  |   | $5.5\text{ V} \leq V_{OUT(S)} \leq 6.0\text{ V}$   | —  | 0.17         | 0.20                     | V             | 1            |   |
| Line regulation 1                        | $\frac{\Delta V_{OUT1}}{\Delta V_{IN} \cdot V_{OUT}}$ | $V_{OUT(S)}+0.5\text{ V} \leq V_{IN} \leq 10\text{ V}$ ,<br>$I_{OUT}=30\text{ mA}$                                 | —  | 0.05         | 0.2                      | %/V           | 1            |   |
| Line regulation 2                        | $\frac{\Delta V_{OUT2}}{\Delta V_{IN} \cdot V_{OUT}}$ | $V_{OUT(S)}+0.5\text{ V} \leq V_{IN} \leq 10\text{ V}$ ,<br>$I_{OUT}=10\text{ }\mu\text{A}$                        | —  | 0.05         | 0.2                      | %/V           | 1            |   |
| Load regulation                          | $\Delta V_{OUT3}$                                     | $V_{IN}=V_{OUT(S)}+1\text{ V}$ ,<br>$10\text{ }\mu\text{A} \leq I_{OUT} \leq 80\text{ mA}$                         | —  | 30           | 50                       | mV            | 1            |   |
| Output voltage temperature coefficient*4 | $\frac{\Delta V_{OUT}}{\Delta T_a \cdot V_{OUT}}$     | $V_{IN}=V_{OUT(S)}+1\text{ V}$ , $I_{OUT}=30\text{ mA}$ ,<br>$-40^\circ\text{C} \leq T_a \leq 85^\circ\text{C}$    | —  | $\pm 100$    | —                        | ppm/<br>°C    | 1            |   |
| Current consumption during operation     | $I_{SS1}$   | $V_{IN}=V_{OUT(S)}+1\text{ V}$ ,<br>ON/OFF pin=ON, no load   | —  | 30           | 40                       | $\mu\text{A}$ | 2            |   |
| Current consumption during power-off     | $I_{SS2}$   | $V_{IN}=V_{OUT(S)}+1\text{ V}$ ,<br>ON/OFF pin=OFF, no load  | —  | 0.1          | 0.5                      | $\mu\text{A}$ | 2            |   |
| Input voltage                            | $V_{IN}$  | —  | —  | —            | 10                       | V             | 1            |   |
| ON/OFF pin input voltage "H"             | $V_{SH}$  | $V_{IN}=V_{OUT(S)}+1\text{ V}$ , $R_L=1\text{ k}\Omega$ ,<br>determined by $V_{OUT}$ output level.                 | 1.5  | —            | —                        | V             | 4            |   |
| ON/OFF pin input voltage "L"             | $V_{SL}$  | $V_{IN}=V_{OUT(S)}+1\text{ V}$ , $R_L=1\text{ k}\Omega$ ,<br>determined by $V_{OUT}$ output level.                 | —  | —            | 0.3                      | V             | 4            |   |
| ON/OFF pin input current "H"             | $I_{SH}$  | $V_{IN}=V_{OUT(S)}+1\text{ V}$ , $V_{ON/OFF}=7\text{ V}$   | -0.1   | —            | 0.1                      | $\mu\text{A}$ | 4            |   |
| ON/OFF pin input current "L"             | $I_{SL}$  | $V_{IN}=V_{OUT(S)}+1\text{ V}$ , $V_{ON/OFF}=0\text{ V}$   | -0.1   | —            | 0.1                      | $\mu\text{A}$ | 4            |   |
| Ripple rejection                         | $ RR $  | $V_{IN}=V_{OUT(S)}+1\text{ V}$ , $f=100\text{ Hz}$ ,<br>$\Delta V_{rip}=0.5\text{ V p-p}$ , $I_{OUT}=30\text{ mA}$ | —  | 45           | —                        | dB            | 5            |   |

- \*1.  $V_{OUT(S)}$ : Set output voltage  
 $V_{OUT(E)}$ : Actual output voltage  
Output voltage when fixing  $I_{OUT}$  (=30 mA) and inputting  $V_{OUT(S)}+1.0$  V
- \*2. The output current at which output voltage becomes 95 % of  $V_{OUT(E)}$  after gradually increasing output current.
- \*3.  $V_{drop}=V_{IN1}^{*1}-(V_{OUT(E)}\times 0.98)$ 
  - \*1. The Input voltage at which output voltage becomes 98 % of  $V_{OUT(E)}$  after gradually decreasing input voltage.
- \*4. A change in the temperature of the output voltage [mV/°C] is calculated using the following equation.  
$$\frac{\Delta V_{OUT}}{\Delta Ta} [mV/^{\circ}C]^{*1} = V_{OUT(S)} [V]^{*2} \times \frac{\Delta V_{OUT}}{\Delta Ta \bullet V_{OUT}} [ppm/^{\circ}C]^{*3} \div 1000$$
  - \*1. Change in temperature of output voltage
  - \*2. Set output voltage
  - \*3. Output voltage temperature coefficient
- \*5. The output current can be at least this value.



■ Test Circuits

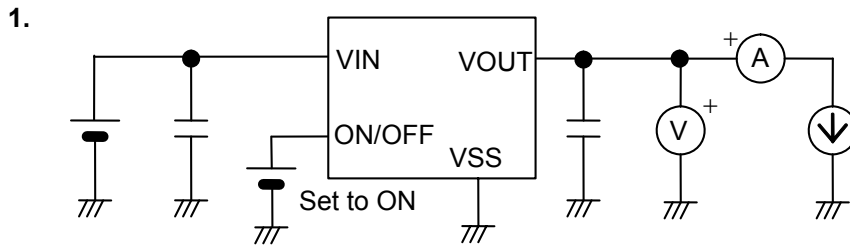


Figure 5

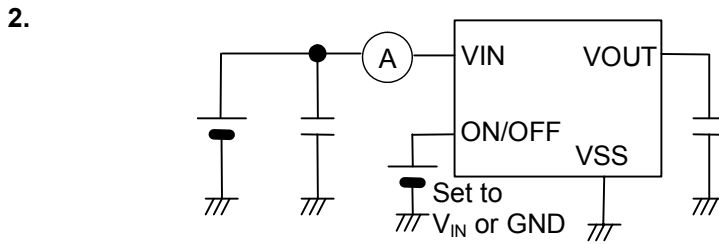


Figure 6

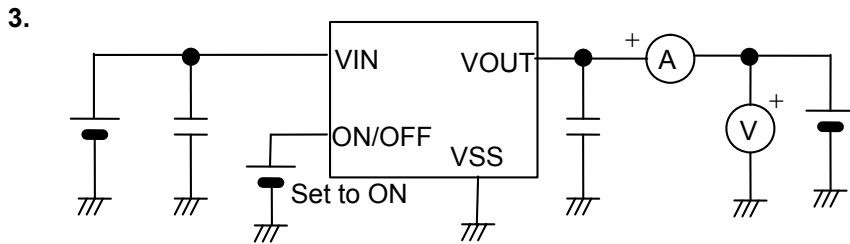


Figure 7

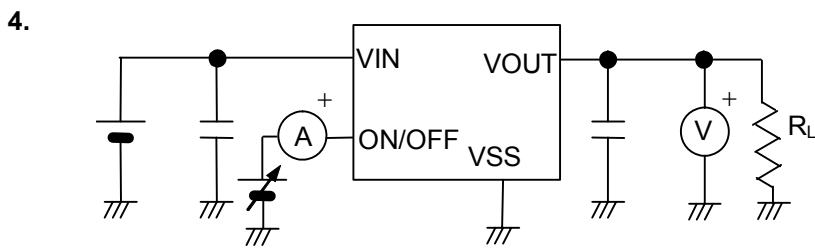


Figure 8

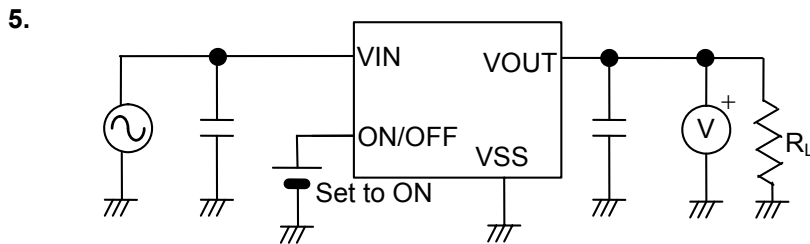


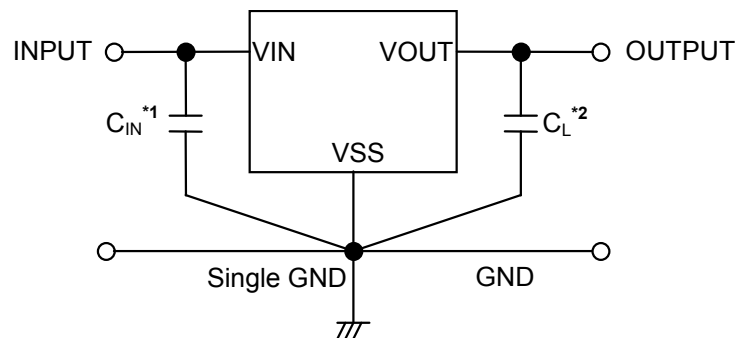
Figure 9

### ■ Condition of Application

|                                     |                      |
|-------------------------------------|----------------------|
| Input capacitor ( $C_{IN}$ ):       | 0.47 $\mu$ F or more |
| Output capacitor ( $C_L$ ):         | 2 $\mu$ F or more    |
| Equivalent series resistor (ESR):   | 10 $\Omega$ or less  |
| Input series resistor ( $R_{IN}$ ): | 10 $\Omega$ or less  |

**Caution** Generally a series regulator may cause oscillation, depending on the selection of external parts. Check that no oscillation occurs with the application using the above capacitor.

### ■ Standard Circuit



\*1.  $C_{IN}$  is a capacitor for stabilizing the input. Use a capacitor of 0.47  $\mu$ F or more.

\*2. In addition to a tantalum capacitor, a ceramic capacitor of 2.0  $\mu$ F or more can be used for  $C_L$ .

Figure 10

**Caution** The above connection diagram and constant will not guarantee successful operation. Perform through evaluation using the actual application to set the constant.

### ■ Explanation of Terms

#### 1. Low dropout voltage regulator

This voltage regulator has the low dropout voltage due to its built-in low on-resistance transistor.

#### 2. Output voltage ( $V_{OUT}$ )

The accuracy of the output voltage is ensured at  $\pm 2.0\%$  under the specified conditions of input voltage, output current, and temperature, which differ product by product.

**Caution** When the above conditions are changed, the output voltage may vary and go out of the accuracy range of the output voltage. Refer to the “■ Electrical Characteristics” and “■ Characteristics (Typical Data)” for details.

#### 3. Line regulation 1 ( $\Delta V_{OUT1}$ ) and Line regulation 2 ( $\Delta V_{OUT2}$ )

Line regulation indicates the input voltage dependence of the output voltage. The value shows how much the output voltage changes due to the change of the input voltage when the output current is kept constant.

**4. Load regulation ( $\Delta V_{OUT3}$ )**

Load regulation indicates the output current dependence of output voltage. The value shows how much the output voltage changes due to the change of the output current when the input voltage is kept constant.

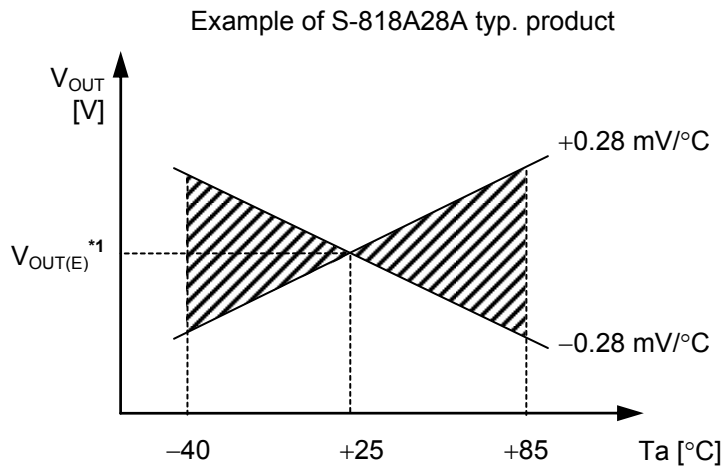
**5. Dropout voltage ( $V_{drop}$ )**

Indicates the difference between input voltage ( $V_{IN1}$ ) and the output voltage when; decreasing input voltage ( $V_{IN}$ ) gradually until the output voltage has dropped out to the value of 98% of the actual output voltage  $V_{OUT(E)}$ .

$$V_{drop} = V_{IN1} - (V_{OUT(E)} \times 0.98)$$

**6. Output voltage temperature coefficient  $\left(\frac{\Delta V_{OUT}}{\Delta T_a \bullet V_{OUT}}\right)$**

The shaded area in **Figure 11** is the range where  $V_{OUT}$  varies in the operation temperature range when the output voltage temperature coefficient is  $\pm 100$  ppm/ $^{\circ}\text{C}$ .



\*1.  $V_{OUT(E)}$  is the value of the output voltage measured at  $T_a = +25^{\circ}\text{C}$ .

**Figure 11 Output voltage temperature coefficient range**

A change in the temperature of the output voltage [mV/ $^{\circ}\text{C}$ ] is calculated using the following equation.

$$\frac{\Delta V_{OUT}}{\Delta T_a} [\text{mV}/^{\circ}\text{C}]^{*1} = V_{OUT(S)} [\text{V}]^{*2} \times \frac{\Delta V_{OUT}}{\Delta T_a \bullet V_{OUT}} [\text{ppm}/^{\circ}\text{C}]^{*3} \div 1000$$

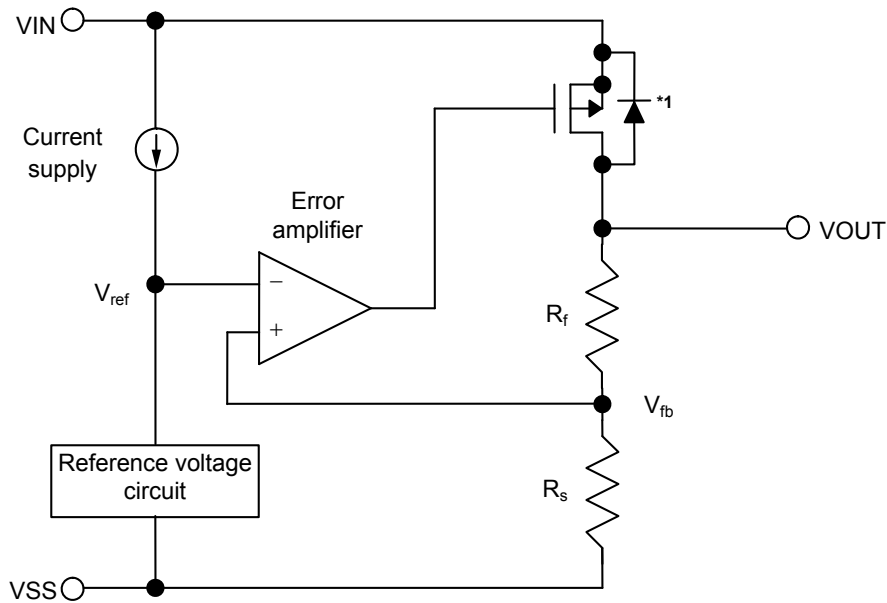
- \*1. Change in temperature of output voltage
- \*2. Set output voltage
- \*3. Output voltage temperature coefficient

■ **Operation**

**1. Basic operation**

Figure 12 shows the block diagram of the S-818 Series.

The error amplifier compares the reference voltage ( $V_{ref}$ ) with feedback voltage ( $V_{fb}$ ), which is the output voltage resistance-divided by feedback resistors ( $R_s$  and  $R_f$ ). It supplies the gate voltage necessary to maintain the constant output voltage which is not influenced by the input voltage and temperature change, to the output transistor.



\*1. Parasitic diode

\*1. Parasitic diode

**Figure 12 Block diagram**

**2. Output transistor**

In the S-818 Series, a low on-resistance P-channel MOS FET is used as the output transistor. Be sure that  $V_{OUT}$  does not exceed  $V_{IN}+0.3$  V to prevent the voltage regulator from being damaged due to reverse current flowing from VOUT pin through a parasitic diode to the VIN pin, when the potential of  $V_{OUT}$  became higher than  $V_{IN}$ .

3. ON/OFF pin

This pin starts and stops the regulator.

When the ON/OFF pin is set to OFF level, the entire internal circuit stops operating, and the built-in P-channel MOS FET output transistor between the VIN pin and the VOUT pin is turned off, reducing current consumption significantly. The VOUT pin becomes the V<sub>SS</sub> level due to the internally divided resistance of several MΩ between the VOUT pin and the VSS pin.

The structure of the ON/OFF pin is shown in **Figure 13**. Since the ON/OFF pin is neither pulled down nor pulled up internally, do not use it in the floating status. In addition, note that the current consumption increases if a voltage of 0.3 V to V<sub>IN</sub> - 0.3 V is applied to the ON/OFF pin. When not using the ON/OFF pin, connect it to the VIN pin in the product A type, and connect it to the VSS pin in B type.

Table 6 ON/OFF pin function by product type

| Product type | ON/OFF pin | Internal circuit | VOUT pin voltage      | Current consumption |
|--------------|------------|------------------|-----------------------|---------------------|
| A            | “H”: ON    | Operate          | Set value             | I <sub>SS1</sub>    |
| A            | “L”: OFF   | Stop             | V <sub>SS</sub> level | I <sub>SS2</sub>    |
| B            | “H”: OFF   | Stop             | V <sub>SS</sub> level | I <sub>SS2</sub>    |
| B            | “L”: ON    | Operate          | Set value             | I <sub>SS1</sub>    |

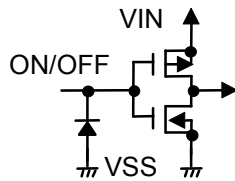


Figure 13 The structure of the ON/OFF Pin

■ Selection of Output Capacitor (C<sub>L</sub>)

The S-818 Series needs an output capacitor between the VOUT pin and the VSS pin for phase compensation. A small ceramic or an OS electrolyte capacitor of 2 μF or more can be used. When a tantalum or an aluminum electrolyte capacitor is used, the capacitance must be 2 μF or more and the ESR must be 10 Ω or less.

Attention should be paid not to cause an oscillation due to increase of ESR at low temperatures when an aluminum electrolyte capacitor is used.

Evaluate the performance including temperature characteristics before prototyping the circuit. Overshoot and undershoot characteristics differ depending upon the type of the output capacitor. Refer to the C<sub>L</sub> dependence data in “■ Transient Response Characteristics (S-818A30A, Typical data, Ta=25°C)”.

■ **Precautions**

- Wiring patterns for the VIN pin, the VOUT pin and GND should be designed so that the impedance is low. When mounting an output capacitor between the VOUT pin and the VSS pin ( $C_L$ ) and a capacitor for stabilizing the input between the VIN pin and the VSS pin ( $C_{IN}$ ), the distance from the capacitors to these pins should be as short as possible.
- Note that generally the output voltage may increase when a series regulator is used at low load current (10 mA or less).
- Generally a series regulator may cause oscillation, depending on the selection of external parts. The following conditions are recommended for the S-818 Series. However, be sure to perform sufficient evaluation under the actual usage conditions for selection, including evaluation of temperature characteristics.

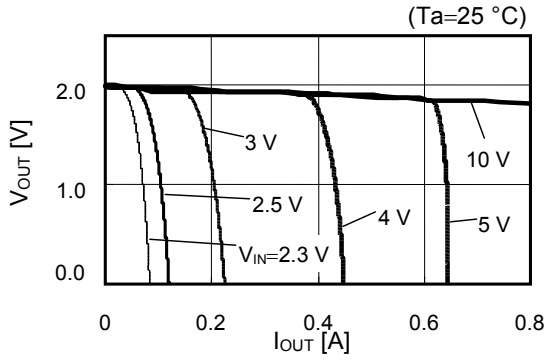
|                                       |                      |
|---------------------------------------|----------------------|
| Input capacitor ( $C_{IN}$ ):         | 0.47 $\mu$ F or more |
| Output capacitor ( $C_L$ ):           | 2 $\mu$ F or more    |
| Equivalent series resistance (ESR):   | 10 $\Omega$ or less  |
| Input series resistance ( $R_{IN}$ ): | 10 $\Omega$ or less  |

- The voltage regulator may oscillate when the impedance of the power supply is high and the input capacitor is small or an input capacitor is not connected.
- Overshoot may occur in the output voltage momentarily if the voltage is rapidly raised at power-on or when the power supply fluctuates. Sufficiently evaluate the output voltage at power-on with the actual device.
- The application conditions for the input voltage, the output voltage, and the load current should not exceed the package power dissipation.
- Do not apply an electrostatic discharge to this IC that exceeds the performance ratings of the built-in electrostatic protection circuit.
- In determining the output current, attention should be paid to the output current value specified in **Table 5** in the “■ **Electrical Characteristics**” and footnote \*5 of the table.
- ABLIC Inc. claims no responsibility for any disputes arising out of or in connection with any infringement by products including this IC of patents owned by a third party.

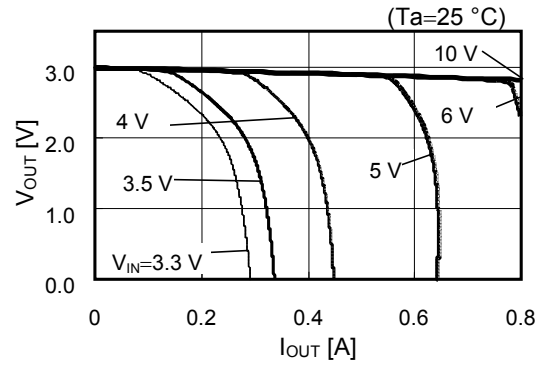
■ Characteristics (Typical data)

1. Output Voltage ( $V_{OUT}$ ) vs. Output Current ( $I_{OUT}$ ) (When load current increases)

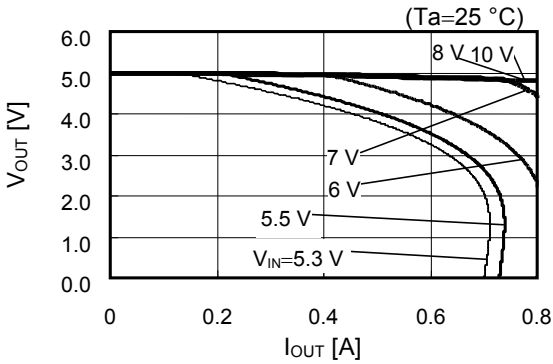
S-818A20A



S-818A30A



S-818A50A

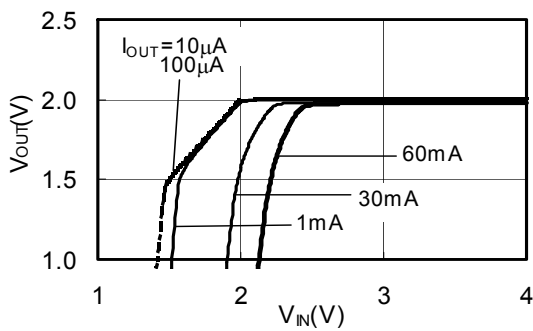


**Remark** In determining necessary output current, consider the following parameters:

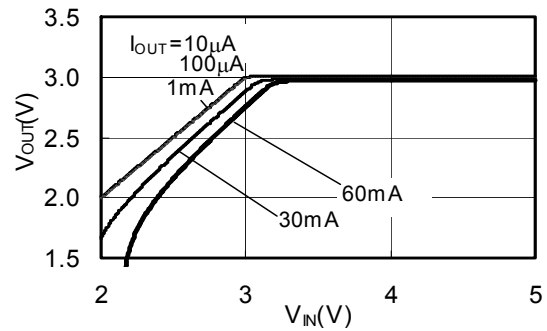
1. Output current value in the “■ Electrical Characteristics” and footnote \*5.
2. Power dissipation of the package

2. Output voltage ( $V_{OUT}$ ) vs. Input voltage ( $V_{IN}$ )

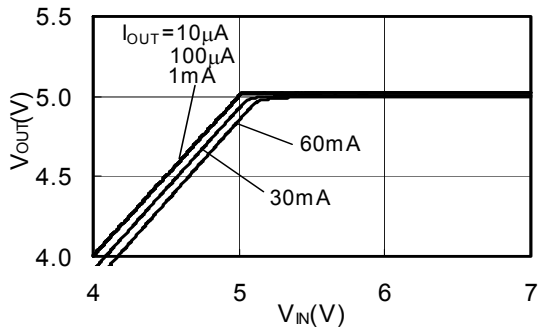
S-818A20A ( $T_a=25^\circ\text{C}$ )



S-818A30A ( $T_a=25^\circ\text{C}$ )

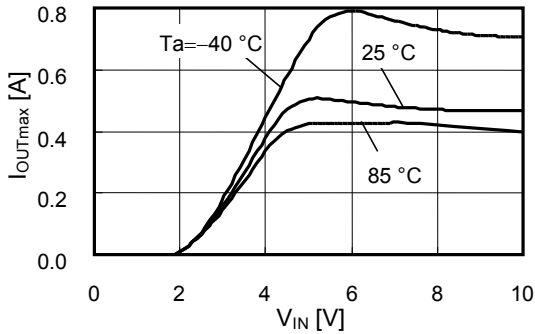


S-818A50A ( $T_a=25^\circ\text{C}$ )

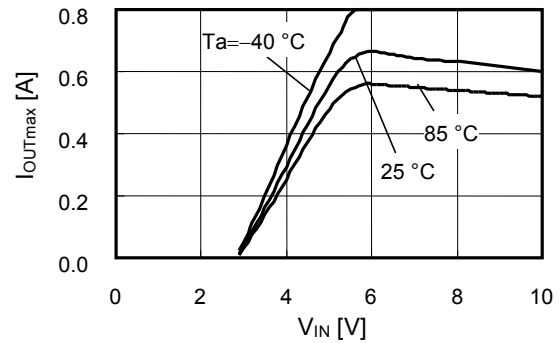


**3. Maximum output current ( $I_{OUTmax}$ ) vs. Input voltage ( $V_{IN}$ )**

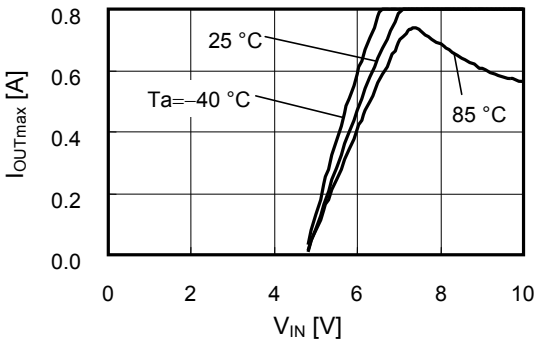
S-818A20A



S-818A30A



S-818A50A

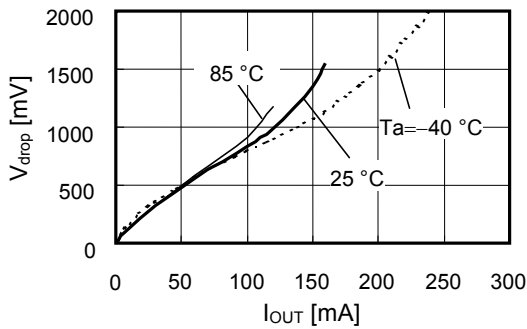


**Remark** In determining necessary output current, consider the following parameters:

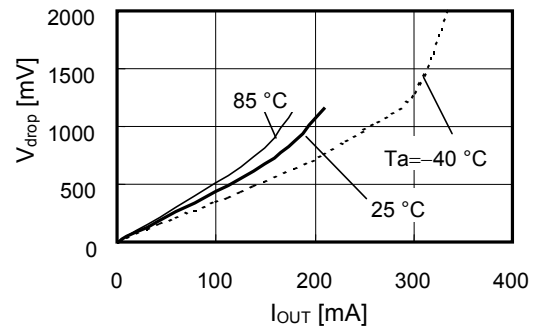
1. Output current value in the “**Electrical Characteristics**” and footnote \*5.
2. Power dissipation of the package

**4. Dropout voltage ( $V_{drop}$ ) vs. Output current ( $I_{OUT}$ )**

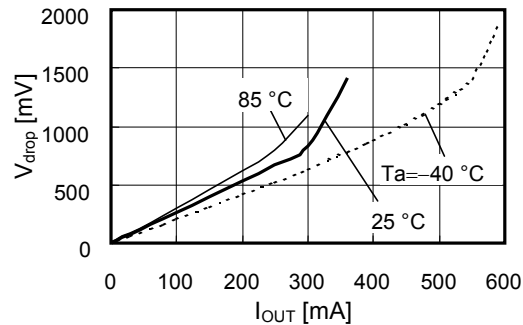
S-818A20A



S-818A30A



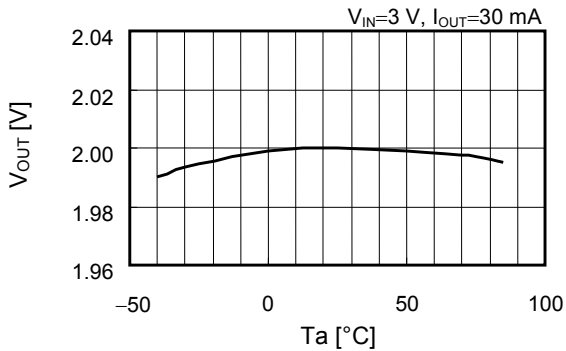
S-818A50A



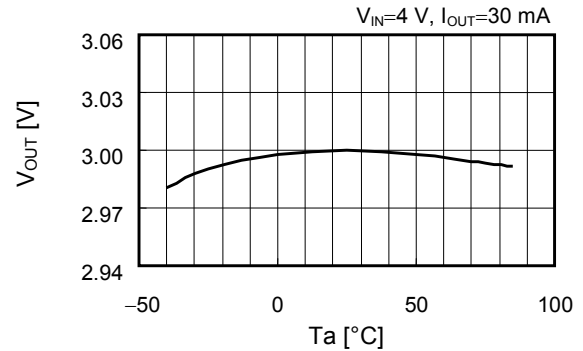


5. Output voltage ( $V_{OUT}$ ) vs. Ambient temperature ( $T_a$ )

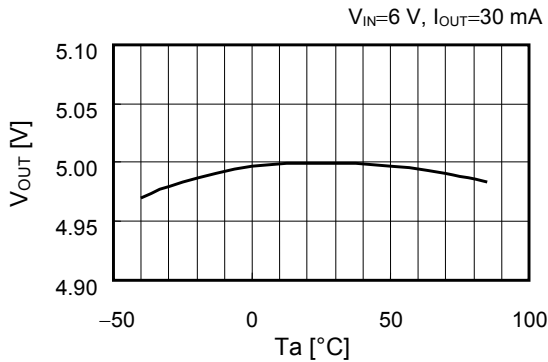
S-818A20A



S-818A30A

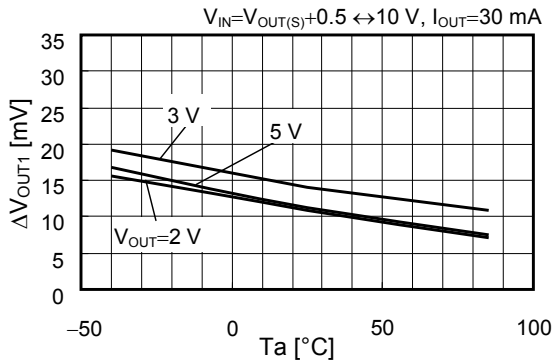


S-818A50A



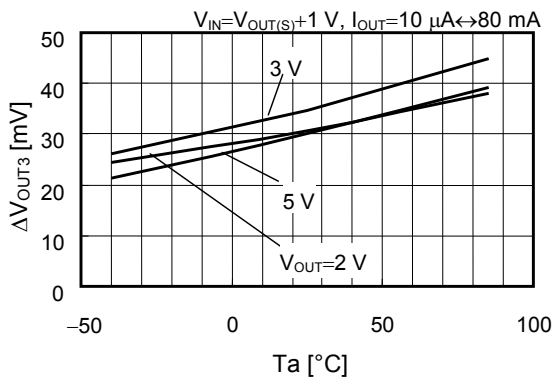
6. Line regulation ( $\Delta V_{OUT1}$ ) vs. Ambient temperature ( $T_a$ )

S-818A20A/S-818A30A/S-818A50A

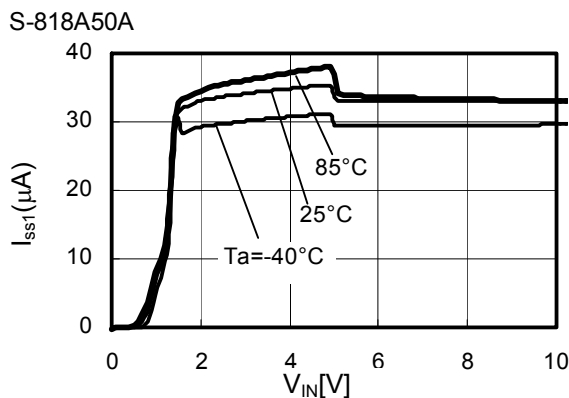
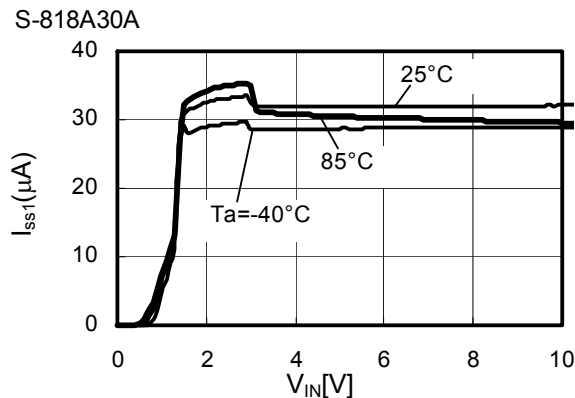
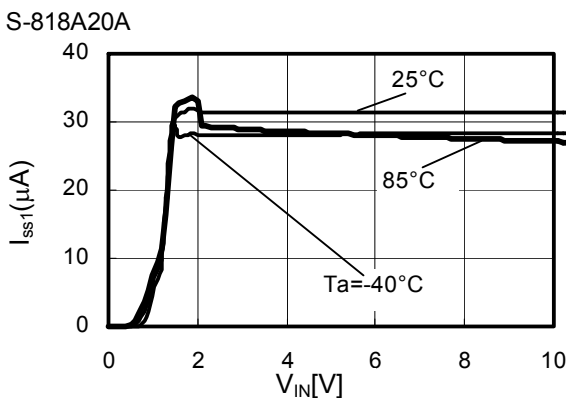


7. Load regulation ( $\Delta V_{OUT3}$ ) vs. Ambient temperature ( $T_a$ )

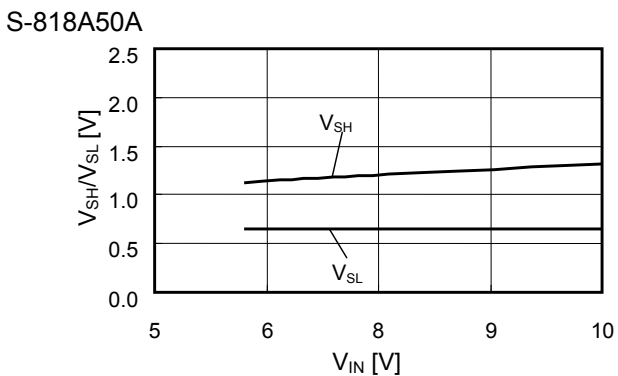
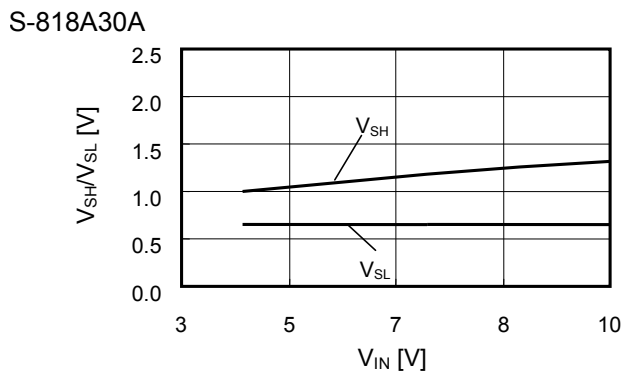
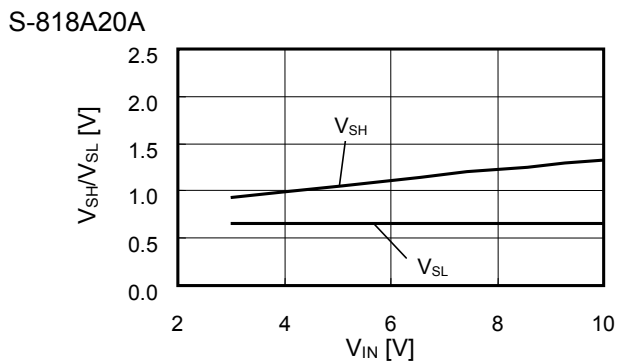
S-818A20A/S-818A30A/S-818A50A



**8. Current consumption ( $I_{SS1}$ ) vs. Input voltage ( $V_{IN}$ )**

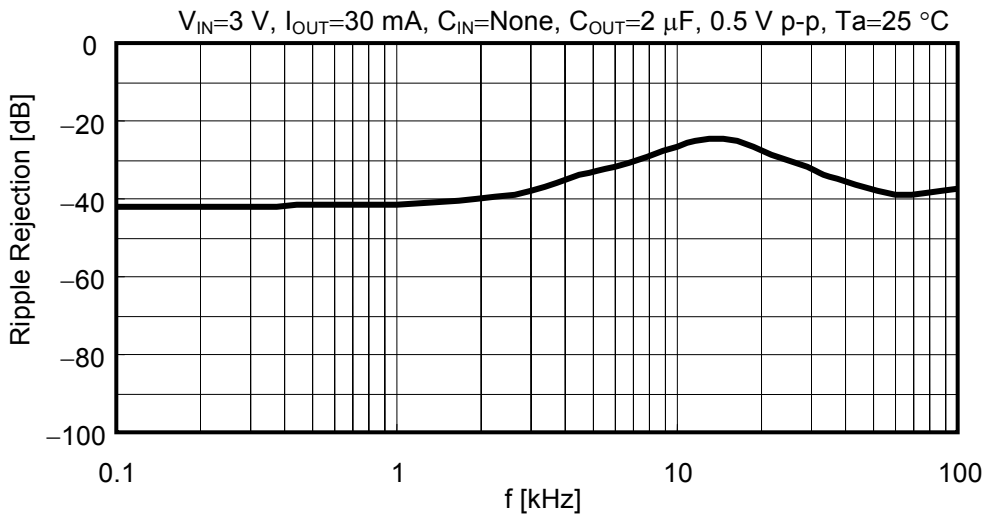


**9. Threshold voltage of ON/OFF pin ( $V_{SH}/V_{SL}$ ) vs. Input voltage ( $V_{IN}$ )**

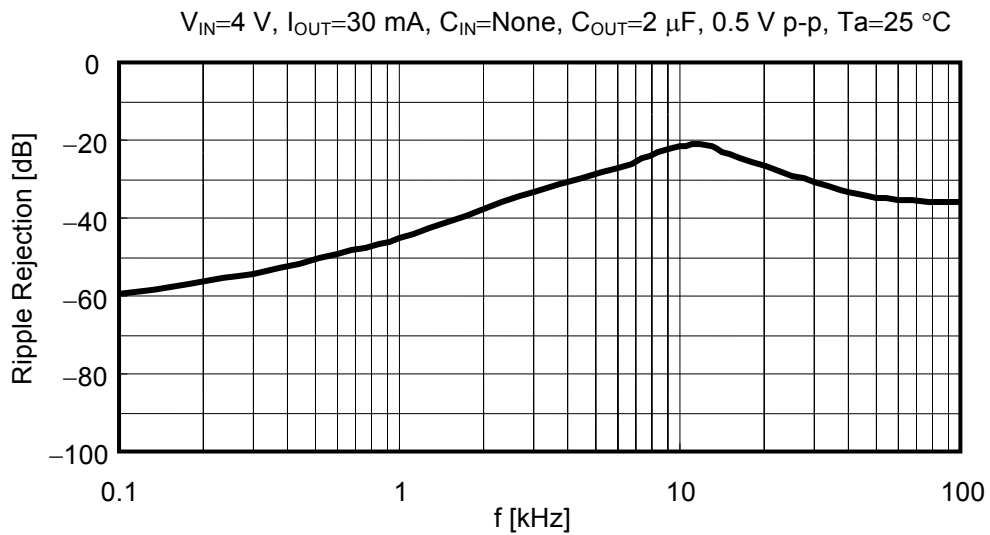


10. Ripple rejection

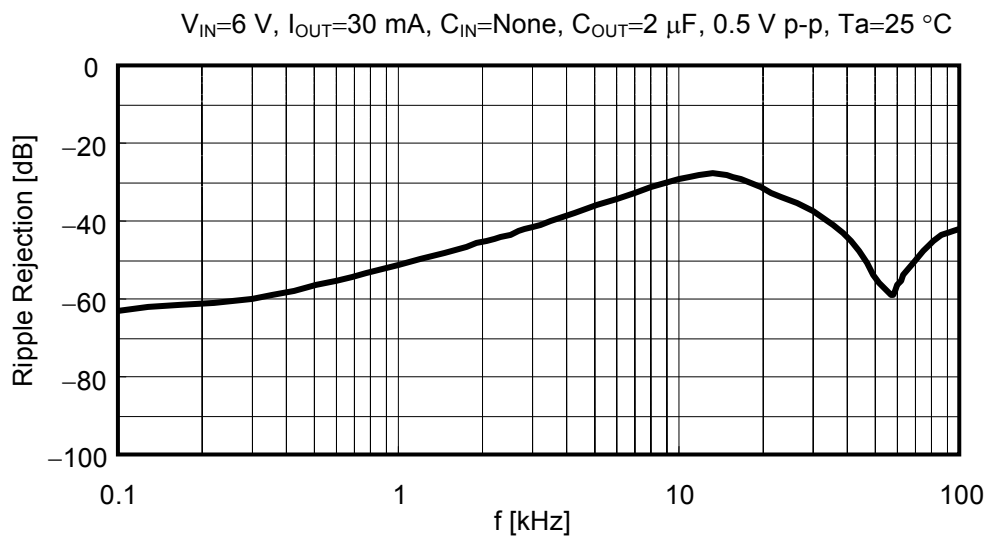
S-818A20A



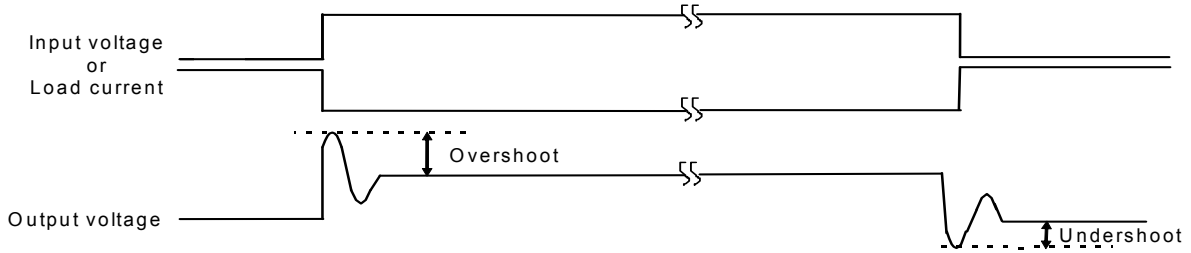
S-818A30A



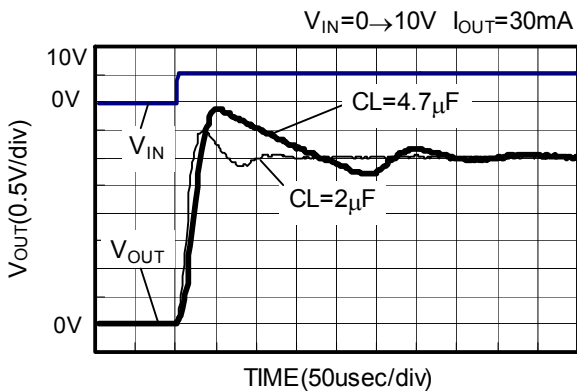
S-818A50A



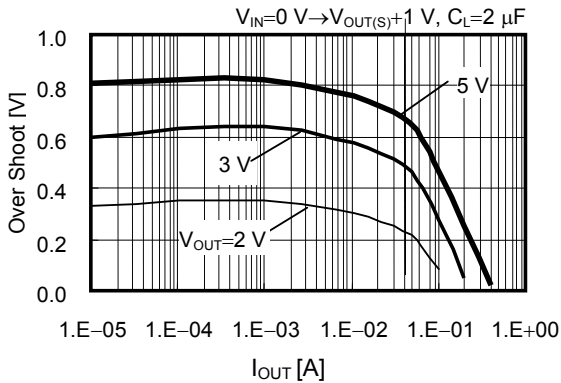
■ **Transient Response Characteristics (S-818A30A, Typical data, Ta=25°C)**



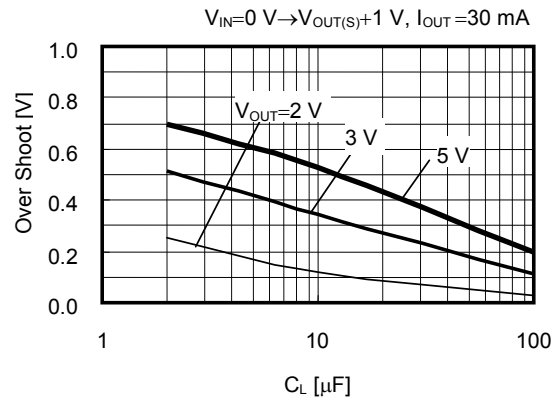
**1. Power on**



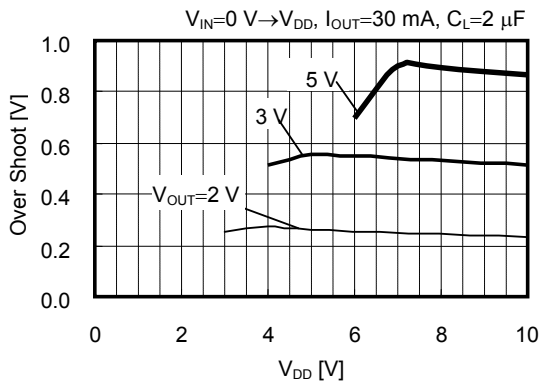
**Load dependence of overshoot**



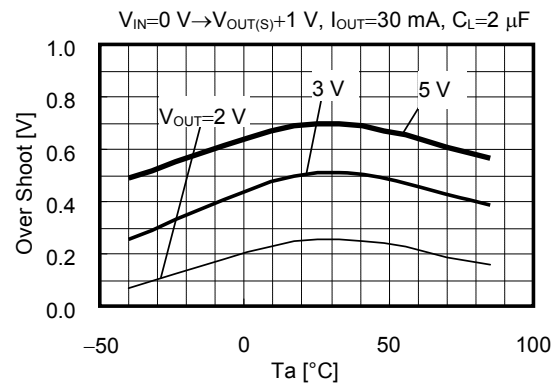
**$C_L$  dependence of overshoot**



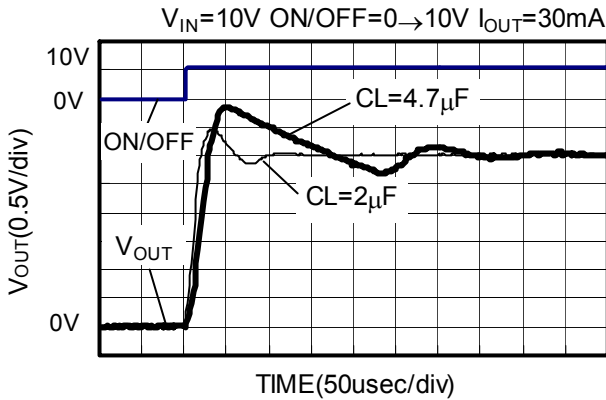
**$V_{DD}$  dependence of overshoot**



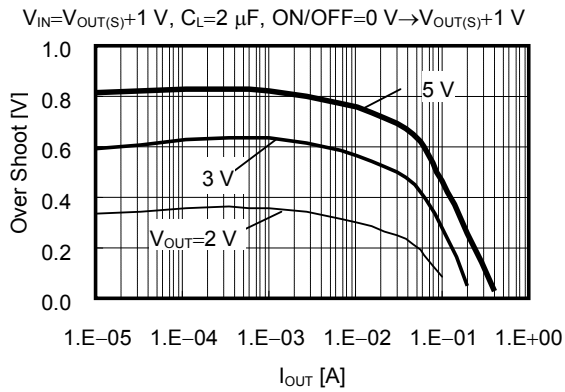
**Temperature dependence of overshoot**



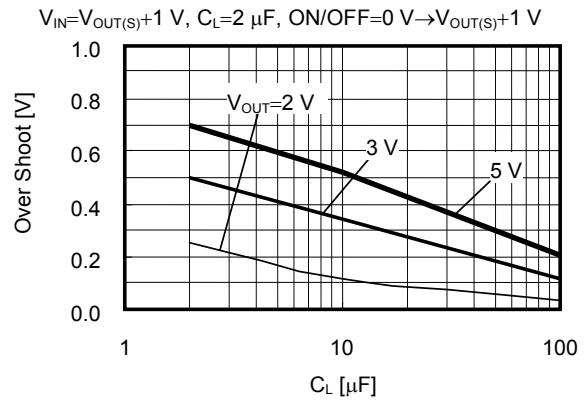
2. ON/OFF control



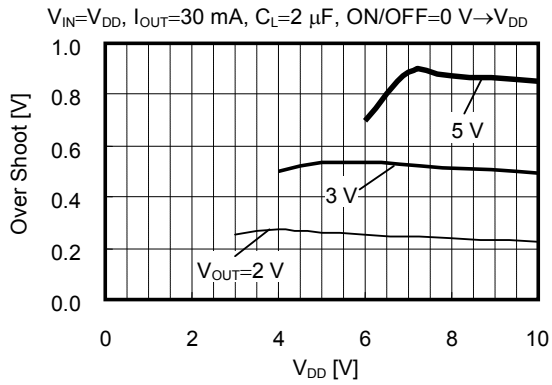
Load dependencies of overshoot



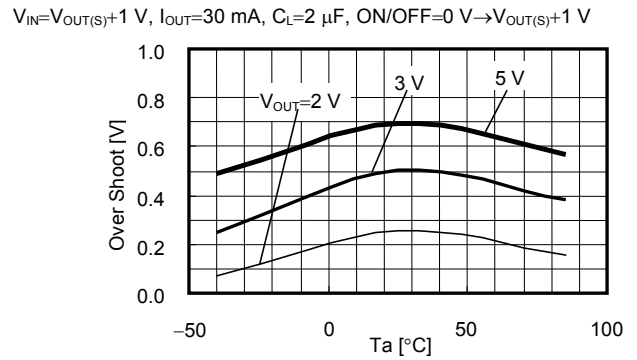
$C_L$  dependence of overshoot



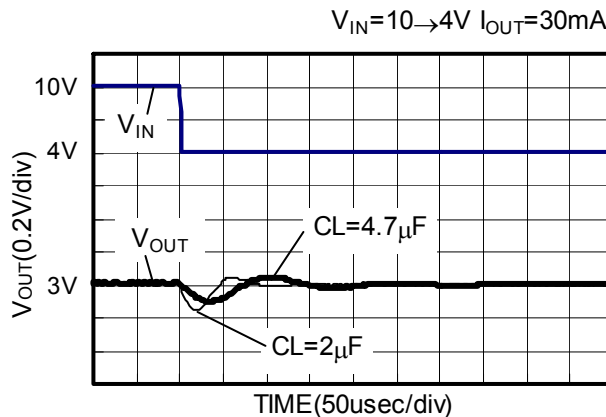
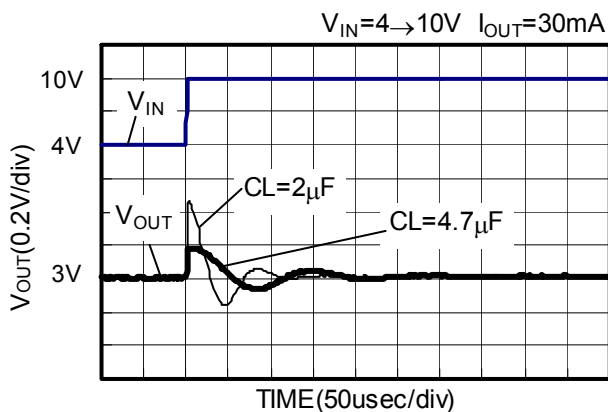
$V_{DD}$  dependencies of overshoot



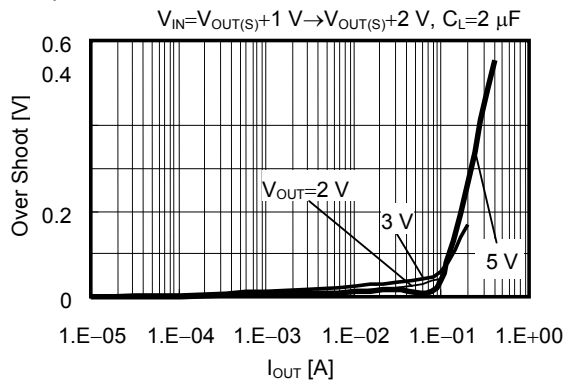
Temperature dependence of overshoot



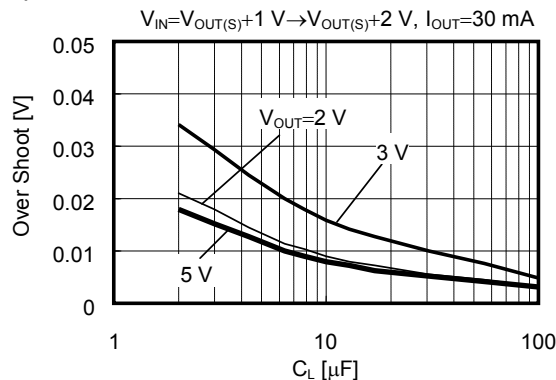
**3. Power fluctuation**



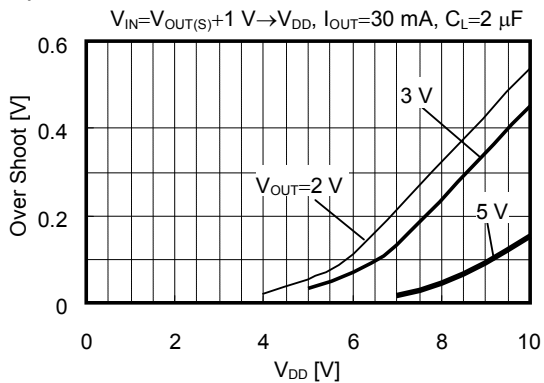
Load dependencies of overshoot



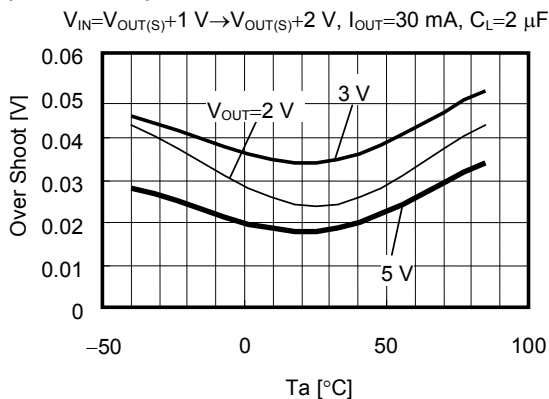
$C_L$  dependence of overshoot



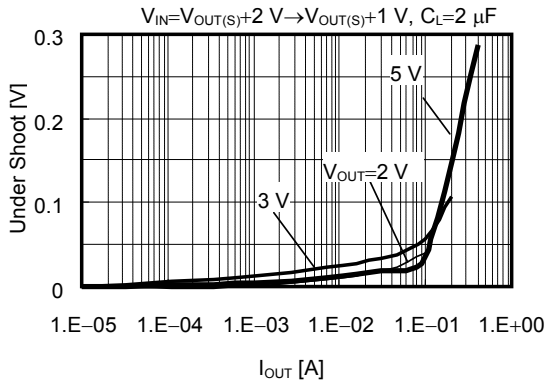
$V_{DD}$  dependencies of overshoot



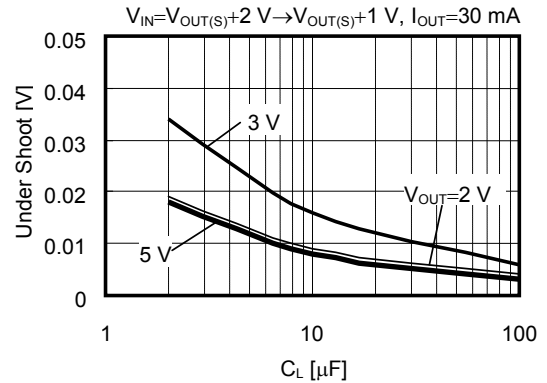
Temperature dependence



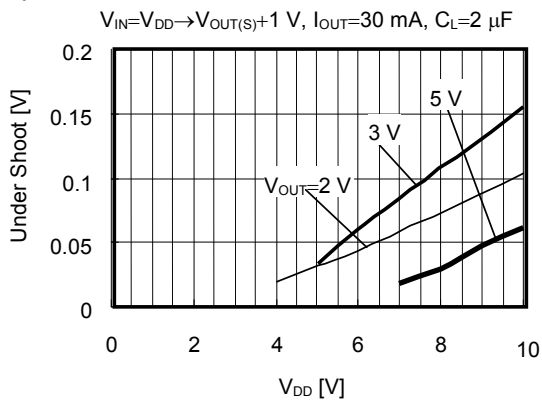
Load dependencies of undershoot



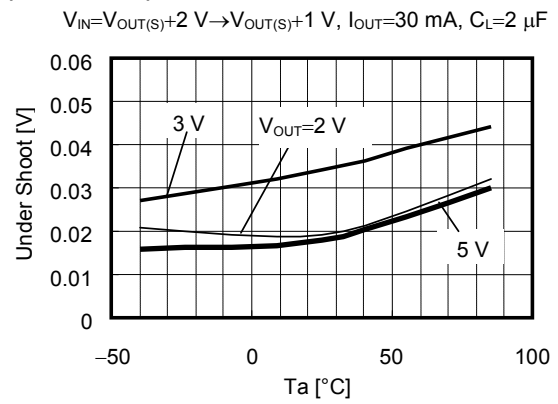
$C_L$  dependence of undershoot



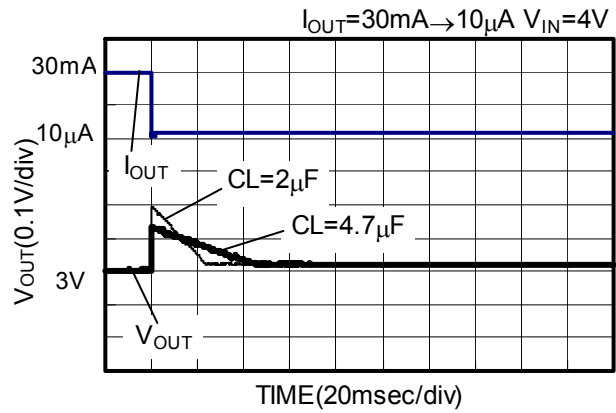
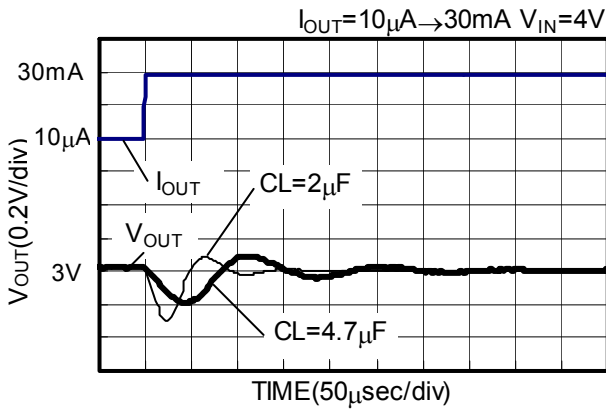
$V_{DD}$  dependencies of undershoot



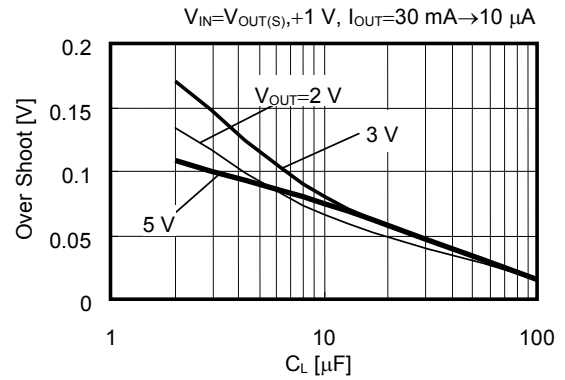
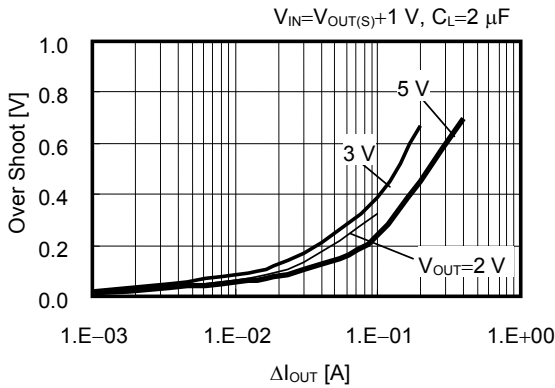
Temperature dependence of undershoot



4. Load fluctuation

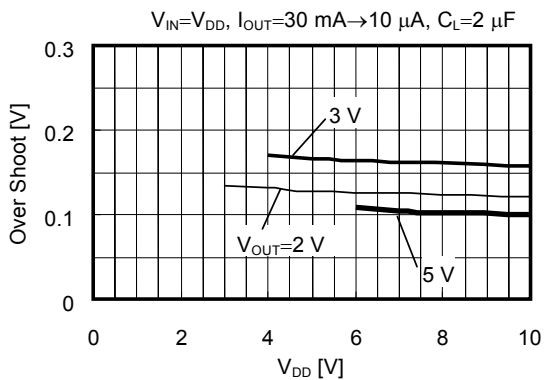


Load current dependence of load fluctuation overshoot  $C_L$  dependence of overshoot

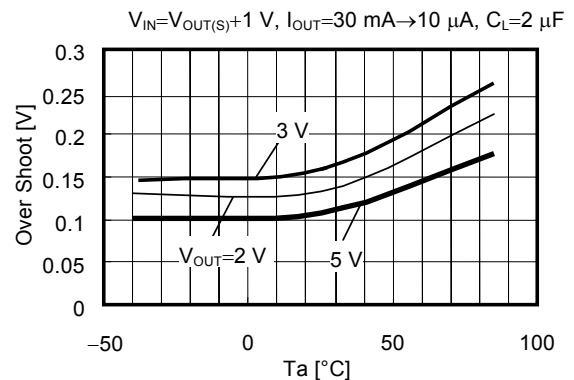


**Remark**  $\Delta I_{OUT}$  shows larger load current at load current fluctuation while smaller current is fixed to 10  $\mu A$ . For example  $\Delta I_{OUT}=1.E-02$  (A) means load current fluctuation from 10 mA to 10  $\mu A$ .

$V_{DD}$  dependencies of overshoot

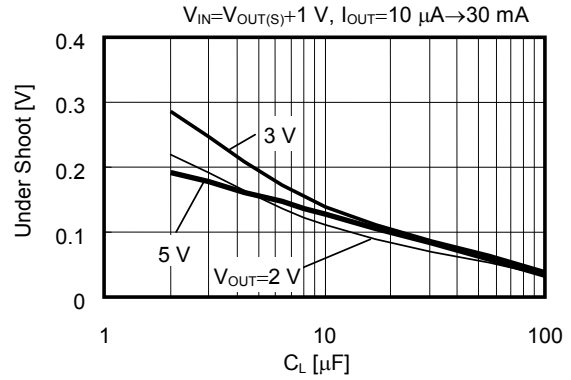
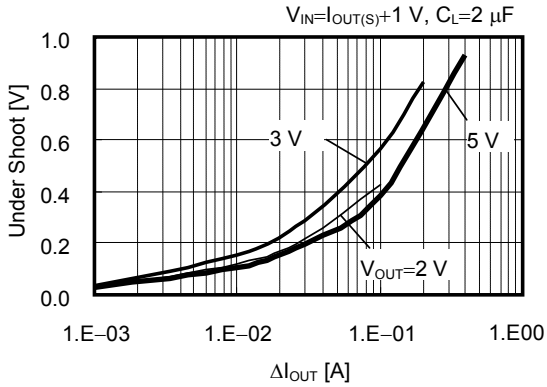


Temperature dependence of overshoot



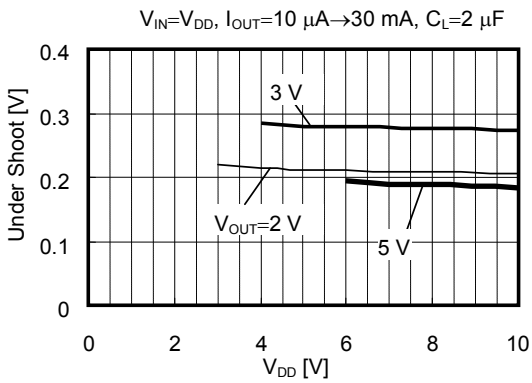


Load current dependence of load fluctuation undershoot  $C_L$  dependence of undershoot

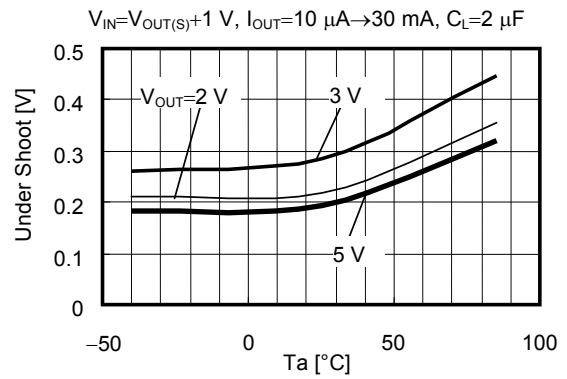


**Remark**  $\Delta I_{OUT}$  shows larger load current at load current fluctuation while smaller current is fixed to  $10\text{ }\mu\text{A}$ . For example  $\Delta I_{OUT}=1.E-02\text{ (A)}$  means load current fluctuation from  $10\text{ }\mu\text{A}$  to  $10\text{ mA}$ .

$V_{DD}$  dependence of undershoot



Temperature dependence of undershoot





No. MP005-A-P-SD-1.3

|                   |                         |
|-------------------|-------------------------|
| TITLE             | SOT235-A-PKG Dimensions |
| No.               | MP005-A-P-SD-1.3        |
| ANGLE             |                         |
| UNIT              | mm                      |
| <b>ABLIC Inc.</b> |                         |



Feed direction →

No. MP005-A-C-SD-2.1

|                   |                       |
|-------------------|-----------------------|
| TITLE             | SOT235-A-Carrier Tape |
| No.               | MP005-A-C-SD-2.1      |
| ANGLE             |                       |
| UNIT              | mm                    |
| <b>ABLIC Inc.</b> |                       |



Enlarged drawing in the central part



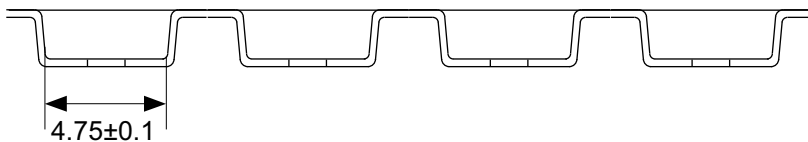
No. MP005-A-R-SD-1.1

|                   |                  |      |       |
|-------------------|------------------|------|-------|
| TITLE             | SOT235-A-Reel    |      |       |
| No.               | MP005-A-R-SD-1.1 |      |       |
| ANGLE             |                  | QTY. | 3,000 |
| UNIT              | mm               |      |       |
|                   |                  |      |       |
| <b>ABLIC Inc.</b> |                  |      |       |



No. UP005-A-P-SD-2.0

|                   |                         |
|-------------------|-------------------------|
| TITLE             | SOT895-A-PKG Dimensions |
| No.               | UP005-A-P-SD-2.0        |
| ANGLE             |                         |
| UNIT              | mm                      |
| <b>ABLIC Inc.</b> |                         |



→  
Feed direction

No. UP005-A-C-SD-2.0

|                   |                       |
|-------------------|-----------------------|
| TITLE             | SOT895-A-Carrier Tape |
| No.               | UP005-A-C-SD-2.0      |
| ANGLE             |                       |
| UNIT              | mm                    |
| <b>ABLIC Inc.</b> |                       |



Enlarged drawing in the central part



No. UP005-A-R-SD-1.1

|                   |                  |      |       |
|-------------------|------------------|------|-------|
| TITLE             | SOT895-A-Reel    |      |       |
| No.               | UP005-A-R-SD-1.1 |      |       |
| ANGLE             |                  | QTY. | 1,000 |
| UNIT              | mm               |      |       |
|                   |                  |      |       |
| <b>ABLIC Inc.</b> |                  |      |       |

## Disclaimers (Handling Precautions)

1. All the information described herein (product data, specifications, figures, tables, programs, algorithms and application circuit examples, etc.) is current as of publishing date of this document and is subject to change without notice.
2. The circuit examples and the usages described herein are for reference only, and do not guarantee the success of any specific mass-production design.  
ABLIC Inc. is not liable for any losses, damages, claims or demands caused by the reasons other than the products described herein (hereinafter "the products") or infringement of third-party intellectual property right and any other right due to the use of the information described herein.
3. ABLIC Inc. is not liable for any losses, damages, claims or demands caused by the incorrect information described herein.
4. Be careful to use the products within their ranges described herein. Pay special attention for use to the absolute maximum ratings, operation voltage range and electrical characteristics, etc.  
ABLIC Inc. is not liable for any losses, damages, claims or demands caused by failures and / or accidents, etc. due to the use of the products outside their specified ranges.
5. Before using the products, confirm their applications, and the laws and regulations of the region or country where they are used and verify suitability, safety and other factors for the intended use.
6. When exporting the products, comply with the Foreign Exchange and Foreign Trade Act and all other export-related laws, and follow the required procedures.
7. The products are strictly prohibited from using, providing or exporting for the purposes of the development of weapons of mass destruction or military use. ABLIC Inc. is not liable for any losses, damages, claims or demands caused by any provision or export to the person or entity who intends to develop, manufacture, use or store nuclear, biological or chemical weapons or missiles, or use any other military purposes.
8. The products are not designed to be used as part of any device or equipment that may affect the human body, human life, or assets (such as medical equipment, disaster prevention systems, security systems, combustion control systems, infrastructure control systems, vehicle equipment, traffic systems, in-vehicle equipment, aviation equipment, aerospace equipment, and nuclear-related equipment), excluding when specified for in-vehicle use or other uses by ABLIC, Inc. Do not apply the products to the above listed devices and equipments.  
ABLIC Inc. is not liable for any losses, damages, claims or demands caused by unauthorized or unspecified use of the products.
9. In general, semiconductor products may fail or malfunction with some probability. The user of the products should therefore take responsibility to give thorough consideration to safety design including redundancy, fire spread prevention measures, and malfunction prevention to prevent accidents causing injury or death, fires and social damage, etc. that may ensue from the products' failure or malfunction.  
The entire system in which the products are used must be sufficiently evaluated and judged whether the products are allowed to apply for the system on customer's own responsibility.
10. The products are not designed to be radiation-proof. The necessary radiation measures should be taken in the product design by the customer depending on the intended use.
11. The products do not affect human health under normal use. However, they contain chemical substances and heavy metals and should therefore not be put in the mouth. The fracture surfaces of wafers and chips may be sharp. Be careful when handling these with the bare hands to prevent injuries, etc.
12. When disposing of the products, comply with the laws and ordinances of the country or region where they are used.
13. The information described herein contains copyright information and know-how of ABLIC Inc. The information described herein does not convey any license under any intellectual property rights or any other rights belonging to ABLIC Inc. or a third party. Reproduction or copying of the information from this document or any part of this document described herein for the purpose of disclosing it to a third-party is strictly prohibited without the express permission of ABLIC Inc.
14. For more details on the information described herein or any other questions, please contact ABLIC Inc.'s sales representative.
15. This Disclaimers have been delivered in a text using the Japanese language, which text, despite any translations into the English language and the Chinese language, shall be controlling.

2.4-2019.07



# Mouser Electronics

Authorized Distributor

Click to View Pricing, Inventory, Delivery & Lifecycle Information:

## ABLIC:

[S-818A33AUC-BGNT2G](#) [S-818A38AUC-BGST2G](#) [S-818A28AUC-BGIT2G](#) [S-818A32AMC-BGMT2G](#) [S-818A36AUC-BGQT2G](#) [S-818A40AUC-BGUT2G](#) [S-818A20AUC-BGAT2G](#) [S-818A50AUC-BHET2G](#) [S-818A30AUC-BGKT2G](#) [S-818A21AMC-BGBT2G](#) [S-818A21AUC-BGBT2G](#) [S-818A22AMC-BGCT2G](#) [S-818A22AUC-BGCT2G](#) [S-818A23AMC-BGDT2G](#) [S-818A23AUC-BGDT2G](#) [S-818A24AMC-BGET2G](#) [S-818A24AUC-BGET2G](#) [S-818A26AMC-BGGT2G](#) [S-818A26AUC-BGGT2G](#) [S-818A27AMC-BGHT2G](#) [S-818A27AUC-BGHT2G](#) [S-818A29AMC-BGJT2G](#) [S-818A29AUC-BGJT2G](#) [S-818A31AUC-BGLT2G](#) [S-818A32AUC-BGMT2G](#) [S-818A34AMC-BGOT2G](#) [S-818A34AUC-BGOT2G](#) [S-818A35AMC-BGPT2G](#) [S-818A36AMC-BGQT2G](#) [S-818A37AMC-BGRT2G](#) [S-818A37AUC-BGRT2G](#) [S-818A39AMC-BGTT2G](#) [S-818A39AUC-BGTT2G](#) [S-818A41AMC-BGVT2G](#) [S-818A41AUC-BGVT2G](#) [S-818A42AMC-BGWT2G](#) [S-818A42AUC-BGWT2G](#) [S-818A43AMC-BGXT2G](#) [S-818A43AUC-BGXT2G](#) [S-818A44AMC-BGYT2G](#) [S-818A44AUC-BGYT2G](#) [S-818A45AMC-BGZT2G](#) [S-818A45AUC-BGZT2G](#) [S-818A46AMC-BHAT2G](#) [S-818A46AUC-BHAT2G](#) [S-818A47AMC-BHBT2G](#) [S-818A47AUC-BHBT2G](#) [S-818A48AMC-BHCT2G](#) [S-818A48AUC-BHCT2G](#) [S-818A49AMC-BHDT2G](#) [S-818A49AUC-BHDT2G](#) [S-818A51AMC-BHFT2G](#) [S-818A51AUC-BHFT2G](#) [S-818A52AMC-BHGT2G](#) [S-818A52AUC-BHGT2G](#) [S-818A53AMC-BHHT2G](#) [S-818A53AUC-BHHT2G](#) [S-818A54AMC-BHIT2G](#) [S-818A54AUC-BHIT2G](#) [S-818A55AMC-BHJT2G](#) [S-818A55AUC-BHJT2G](#) [S-818A56AMC-BHKT2G](#) [S-818A56AUC-BHKT2G](#) [S-818A57AMC-BHLT2G](#) [S-818A57AUC-BHLT2G](#) [S-818A58AMC-BHMT2G](#) [S-818A58AUC-BHMT2G](#) [S-818A59AMC-BHNT2G](#) [S-818A59AUC-BHNT2G](#) [S-818A60AMC-BHOT2G](#) [S-818A60AUC-BHOT2G](#) [S-818A20AMC-BGAT2G](#) [S-818A40AMC-BGUT2G](#) [S-818A30AMC-BGKT2G](#) [S-818A50AMC-BHET2G](#) [S-818A25AUC-BGFT2G](#) [S-818A35AUC-BGPT2G](#) [S-818A25AUC-BGFT2G](#) [S-818A28AMC-BGIT2G](#) [S-818A38AMC-BGST2G](#) [S-818A31AMC-BGLT2G](#) [S-818A33AMC-BGNT2G](#) [S-818A33AUC-BGNT2U](#) [S-818A40AUC-BGUT2U](#)

Компания «Океан Электроники» предлагает заключение долгосрочных отношений при поставках импортных электронных компонентов на взаимовыгодных условиях!

Наши преимущества:

- Поставка оригинальных импортных электронных компонентов напрямую с производств Америки, Европы и Азии, а так же с крупнейших складов мира;
- Широкая линейка поставок активных и пассивных импортных электронных компонентов (более 30 млн. наименований);
- Поставка сложных, дефицитных, либо снятых с производства позиций;
- Оперативные сроки поставки под заказ (от 5 рабочих дней);
- Экспресс доставка в любую точку России;
- Помощь Конструкторского Отдела и консультации квалифицированных инженеров;
- Техническая поддержка проекта, помощь в подборе аналогов, поставка прототипов;
- Поставка электронных компонентов под контролем ВП;
- Система менеджмента качества сертифицирована по Международному стандарту ISO 9001;
- При необходимости вся продукция военного и аэрокосмического назначения проходит испытания и сертификацию в лаборатории (по согласованию с заказчиком);
- Поставка специализированных компонентов военного и аэрокосмического уровня качества (Xilinx, Altera, Analog Devices, Intersil, Interpoint, Microsemi, Actel, Aeroflex, Peregrine, VPT, Syfer, Eurofarad, Texas Instruments, MS Kennedy, Miteq, Cobham, E2V, MA-COM, Hittite, Mini-Circuits, General Dynamics и др.);

Компания «Океан Электроники» является официальным дистрибьютором и эксклюзивным представителем в России одного из крупнейших производителей разъемов военного и аэрокосмического назначения «JONHON», а так же официальным дистрибьютором и эксклюзивным представителем в России производителя высокотехнологичных и надежных решений для передачи СВЧ сигналов «FORSTAR».



## JONHON

«JONHON» (основан в 1970 г.)

Разъемы специального, военного и аэрокосмического назначения:

(Применяются в военной, авиационной, аэрокосмической, морской, железнодорожной, горно- и нефтедобывающей отраслях промышленности)

«FORSTAR» (основан в 1998 г.)

ВЧ соединители, коаксиальные кабели, кабельные сборки и микроволновые компоненты:

(Применяются в телекоммуникациях гражданского и специального назначения, в средствах связи, РЛС, а так же военной, авиационной и аэрокосмической отраслях промышленности).



Телефон: 8 (812) 309-75-97 (многоканальный)

Факс: 8 (812) 320-03-32

Электронная почта: [ocean@oceanchips.ru](mailto:ocean@oceanchips.ru)

Web: <http://oceanchips.ru/>

Адрес: 198099, г. Санкт-Петербург, ул. Калинина, д. 2, корп. 4, лит. А